

Schlumberger

COMPENSATED
FORMATION DENSITY LOG
SCHLUMBERGER OF CANADA Calgary, Alberta

| | | |
|---|---|---|
| PROVINCE YUKON TERRITORY FIELD KILDEAR WELL KARDY ME - PEI - WEST TWE Y1 N-18 COMPANY MURPHY OIL COMPANY LTD. | COMPANY MURPHY OIL COMPANY LTD. WELL KARDY ME - PEI - WEST TWE FIELD KILDEAR PROVINCE YUKON TERRITORY LOCATION KARDY ME - PEI - WEST TWE Permanent Datum Elev. _____ Log Measured from _____ H Above Perm Datum ELEV. KB GI CBF | Other Services G-1 G-2 G-3 G-4 G-5 G-6 G-7 G-8 G-9 G-10 G-11 G-12 G-13 G-14 G-15 G-16 G-17 G-18 G-19 G-20 |
| Date 1 APR 75 Run No. 1 First Reading 20.0 Last Reading 20.0 Feet Measured 100 Depth Reached 100 Bottom Driller S-201 Csg. SOC S-201 Csg. Driller S-201 Mud Nature S-201 Dens. Visc S-201 Mud pH S-201 Water Loss S-201 Res. of S-201 Rmf. of S-201 @ BHT S-201 Rmc. of S-201 Bit Size S-201 Equipment Type S-201 Op. Rig Time S-201 Truck No. S-201 Recorded By S-201 Witness S-201 | COMPANY MURPHY OIL COMPANY LTD. WELL KARDY ME - PEI - WEST TWE FIELD KILDEAR PROVINCE YUKON TERRITORY LOCATION KARDY ME - PEI - WEST TWE Permanent Datum Elev. _____ Log Measured from _____ H Above Perm Datum ELEV. KB GI CBF | Other Services G-1 G-2 G-3 G-4 G-5 G-6 G-7 G-8 G-9 G-10 G-11 G-12 G-13 G-14 G-15 G-16 G-17 G-18 G-19 G-20 |

REMARKS

Drilling Stopped _____ Circulation Stopped _____ Tool on Bottom _____ Ist Run Service Order # _____ BHT _____

Panel No. _____
 Cartridge No. _____
 Sonde No. _____

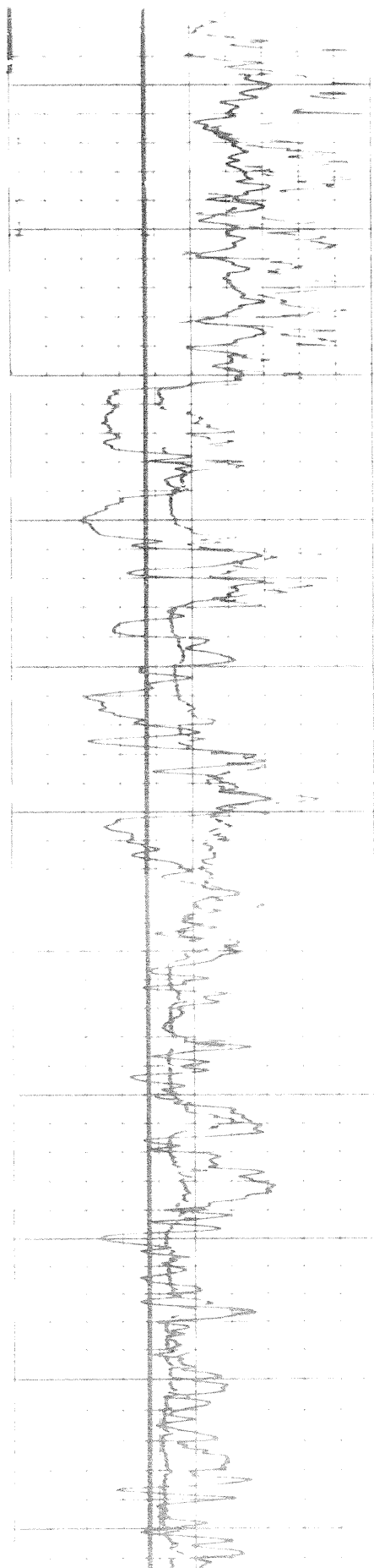
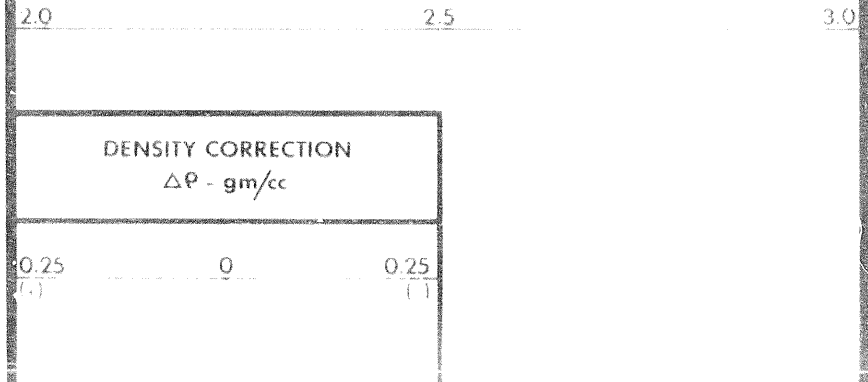
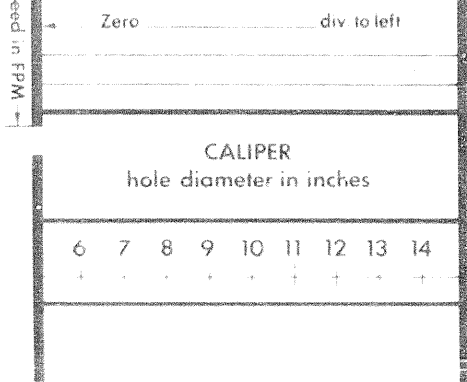
Log No. _____

Weight of Log _____ Background CPS _____ Tool Sp. _____ Galvanometer Deflection Div. _____ Panel Sens. Turn for Cal. _____

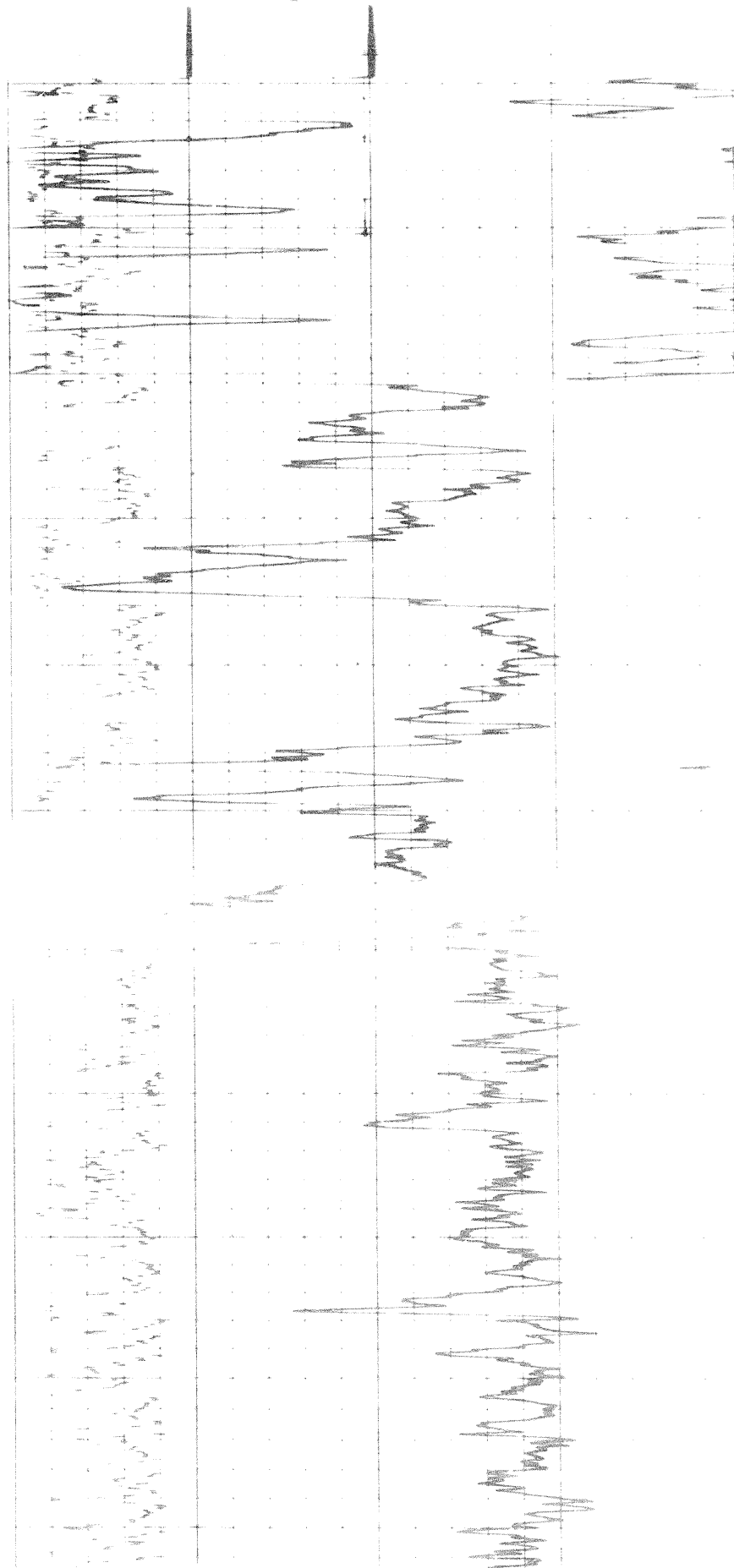
With Block _____ Zero Mud Loss _____
 Long Sp. _____ CPS Direct _____
 Short Sp. _____ CPS
 With Block _____ Zero Mud Loss _____
 Long Sp. _____ CPS Direct _____
 Short Sp. _____ CPS
 With Block _____ Zero Mud Loss _____
 Long Sp. _____ CPS Direct _____
 Short Sp. _____ CPS

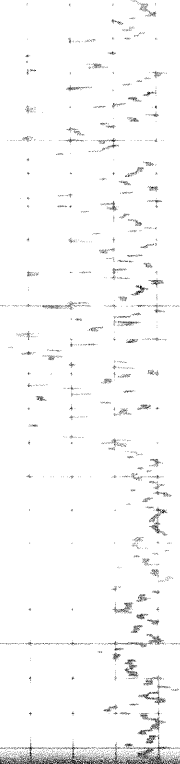
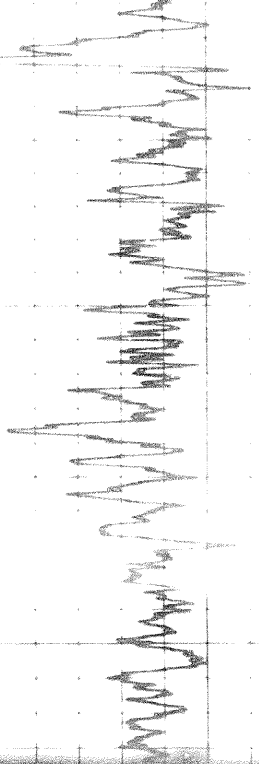
| GAMMA RAY API UNITS | | DEPTHS | BULK DENSITY ρ_b - gm/cc | |
|------------------------------------|----------------------|--|----------------------------------|------|
| Sens | T.C | | 20 | 25 |
| Zero | div to left | | | |
| CALIPER hole diameter in inches | | DENSITY CORRECTION $\Delta\rho$ - gm/cc | | |
| 6 | 7 8 9 10 11 12 13 14 | 0.25 | 0 | 0.25 |

Speed in FPM



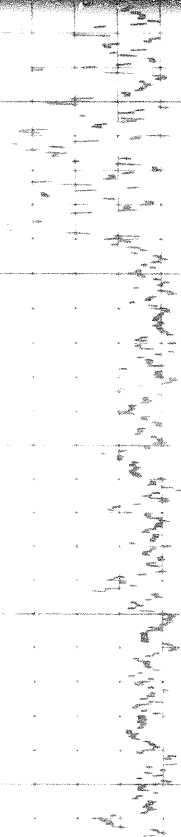
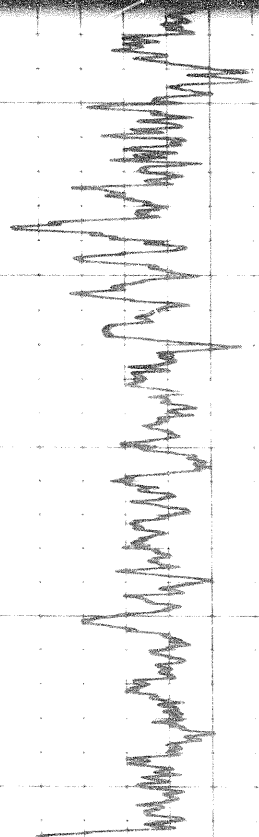
2300
2400
2500
2600
2700





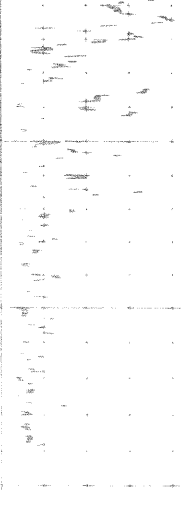
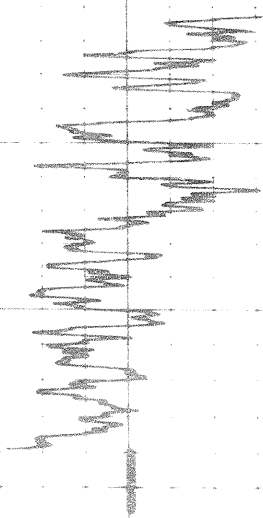
2700

2800



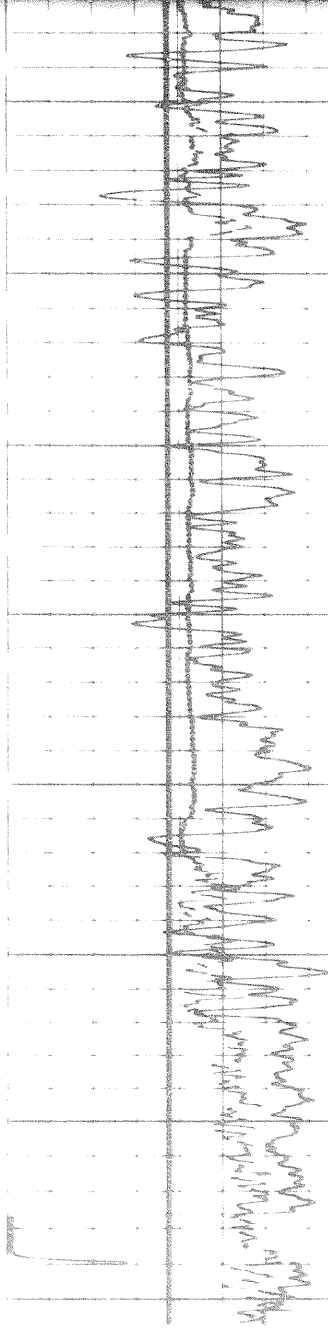
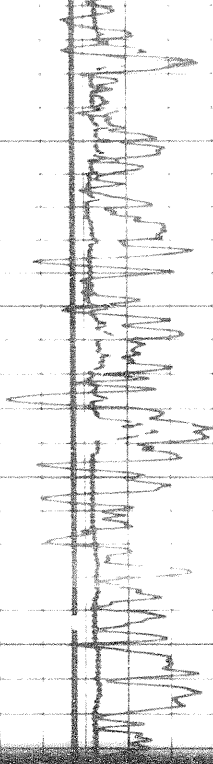
2800

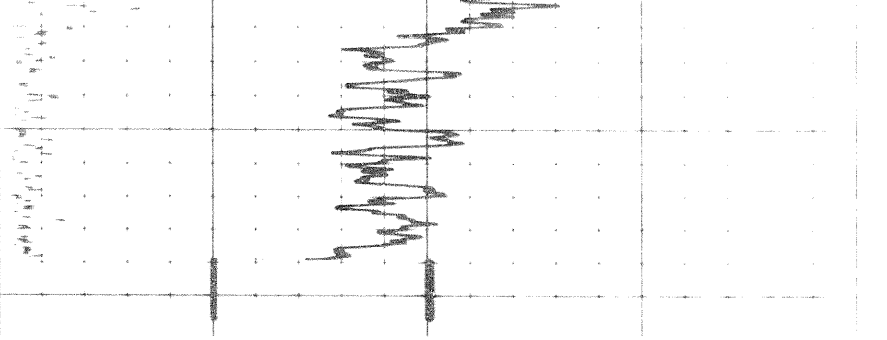
2900



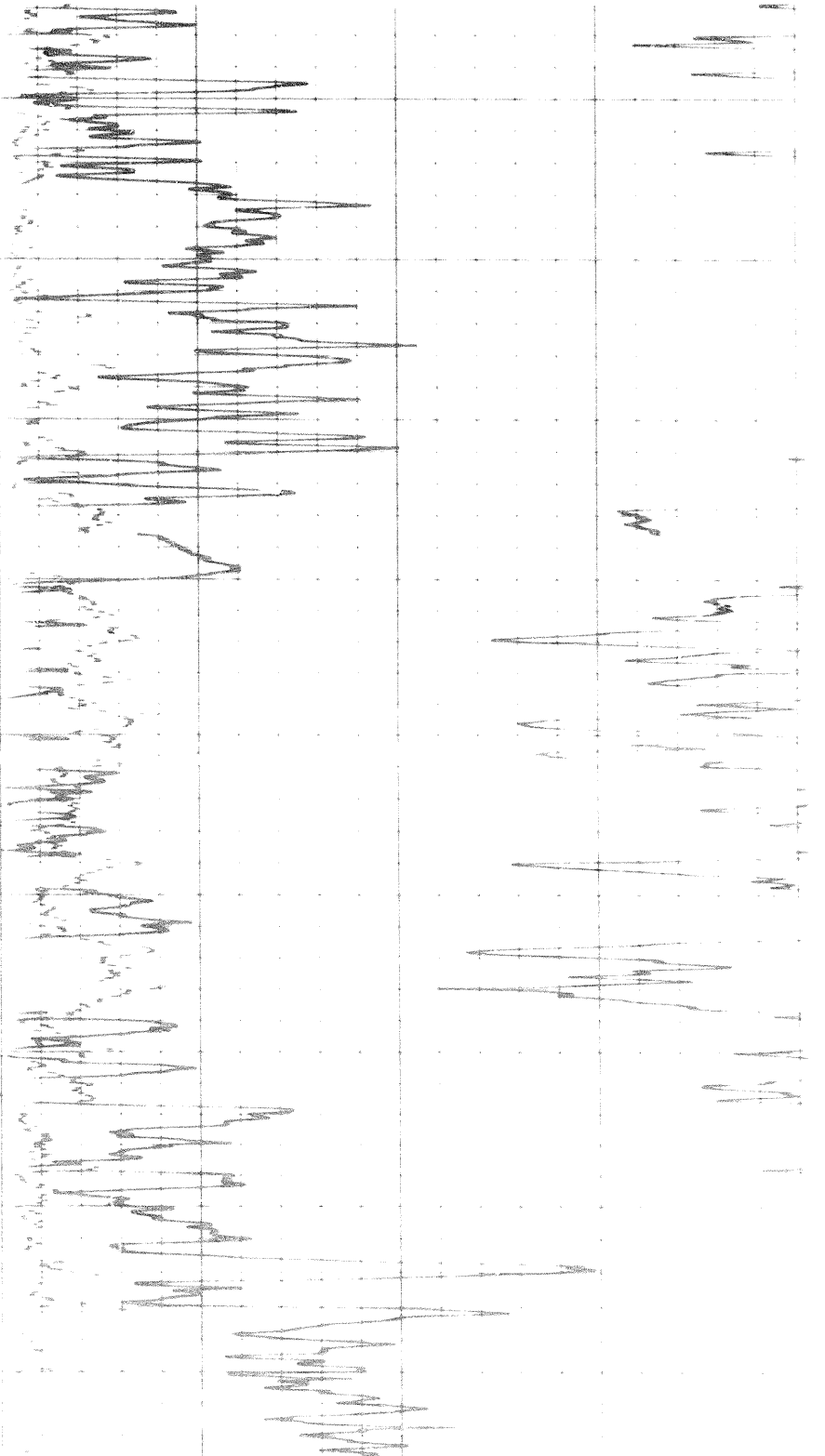
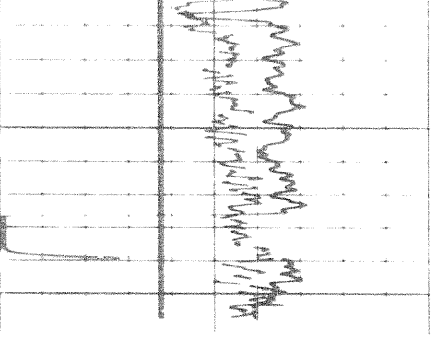
3000

3100





3100



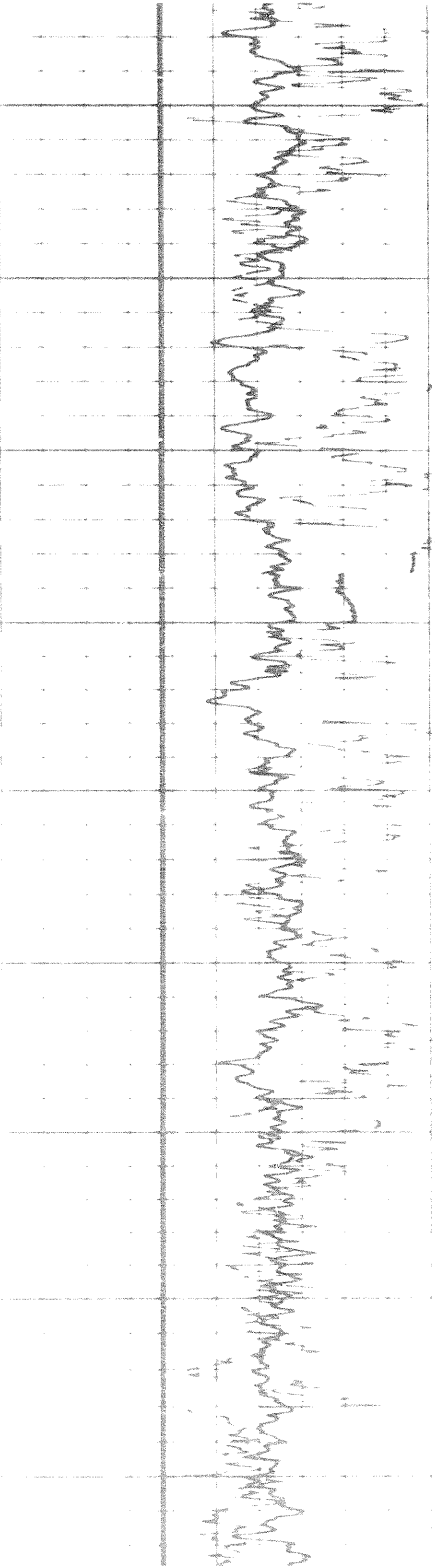
4900

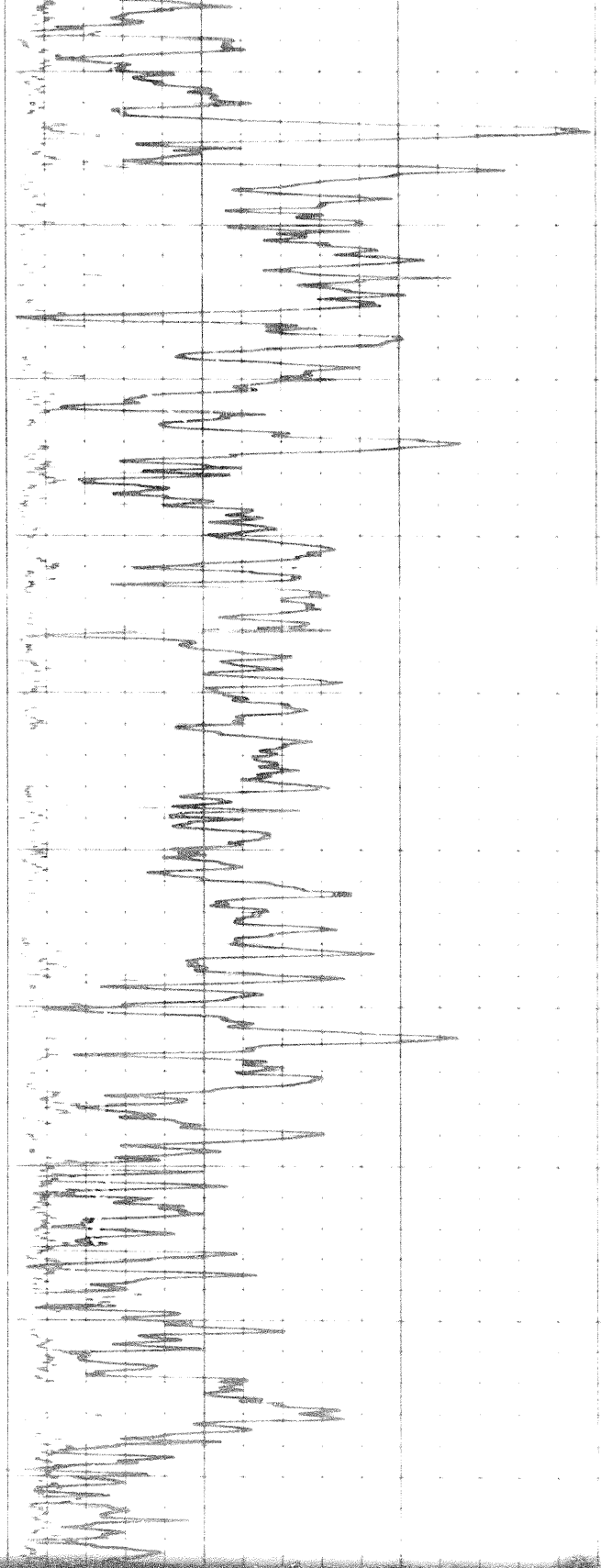
5000

5100

5200

5300





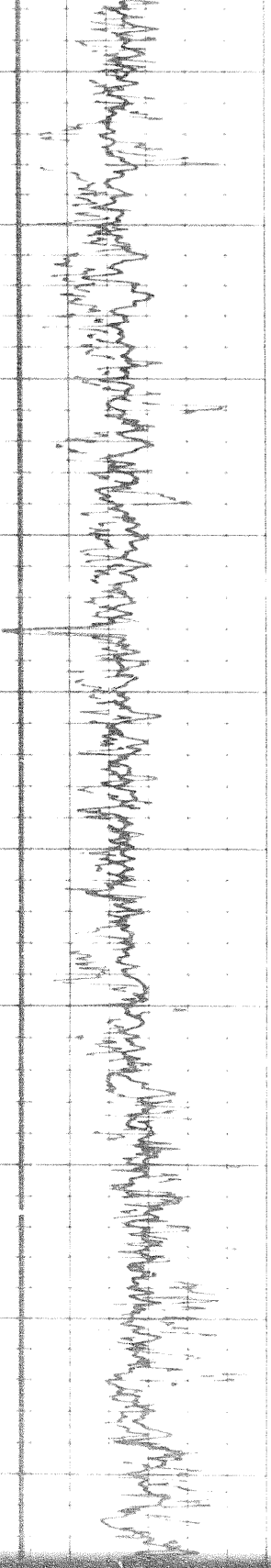
5300

5400

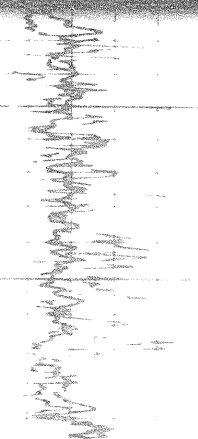
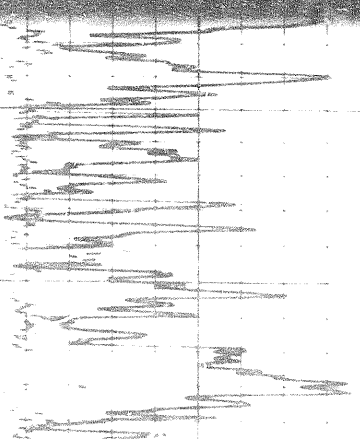
5500

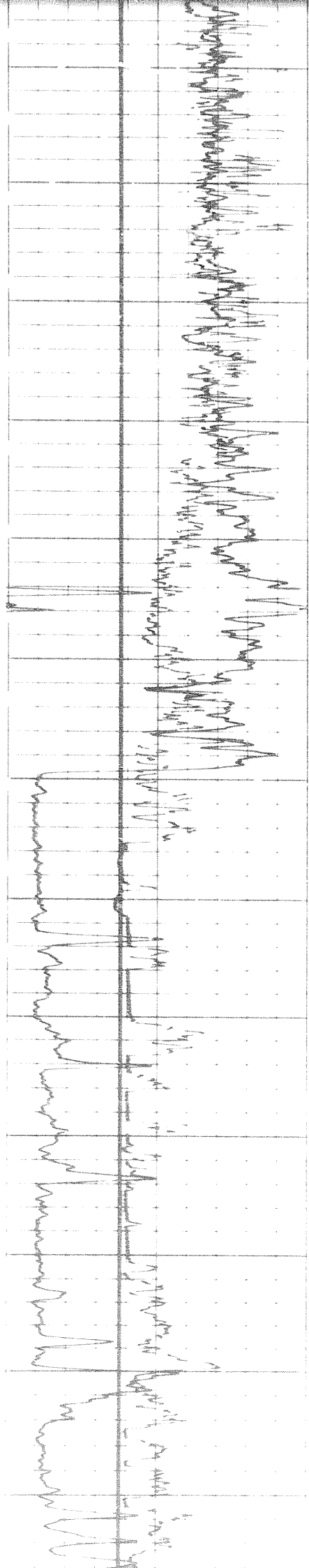
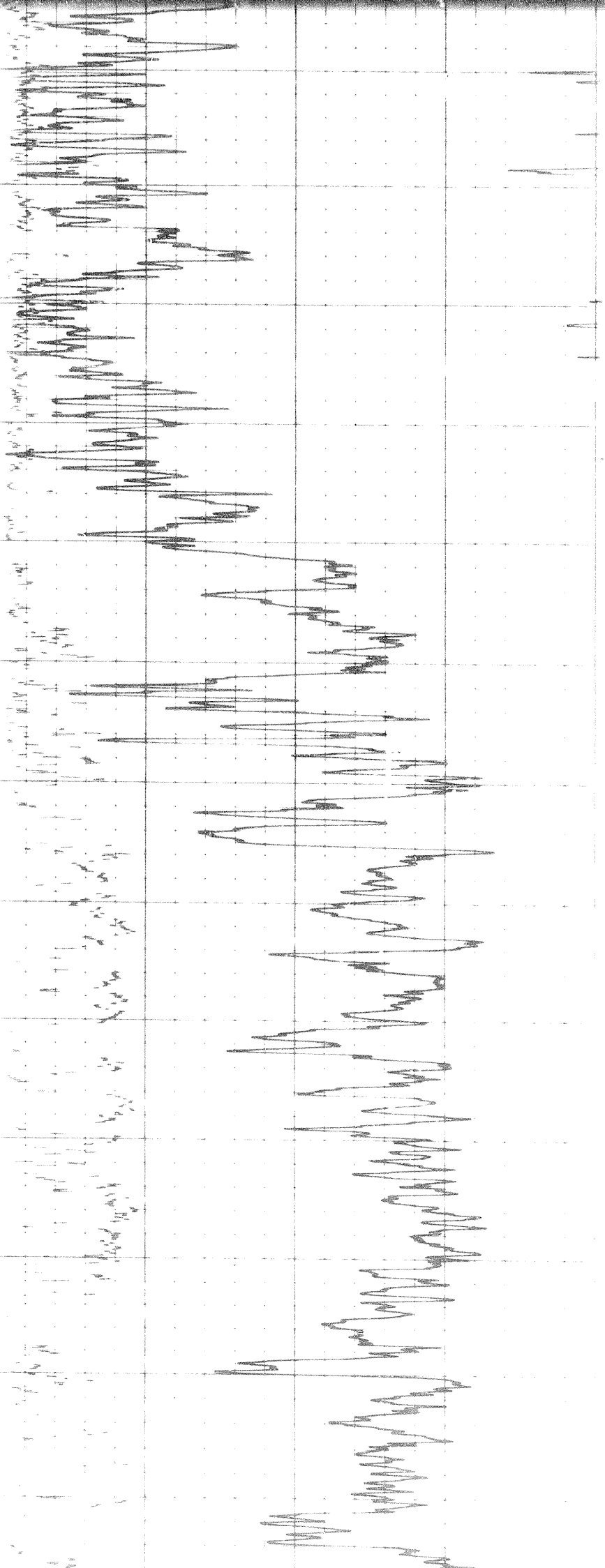
5600

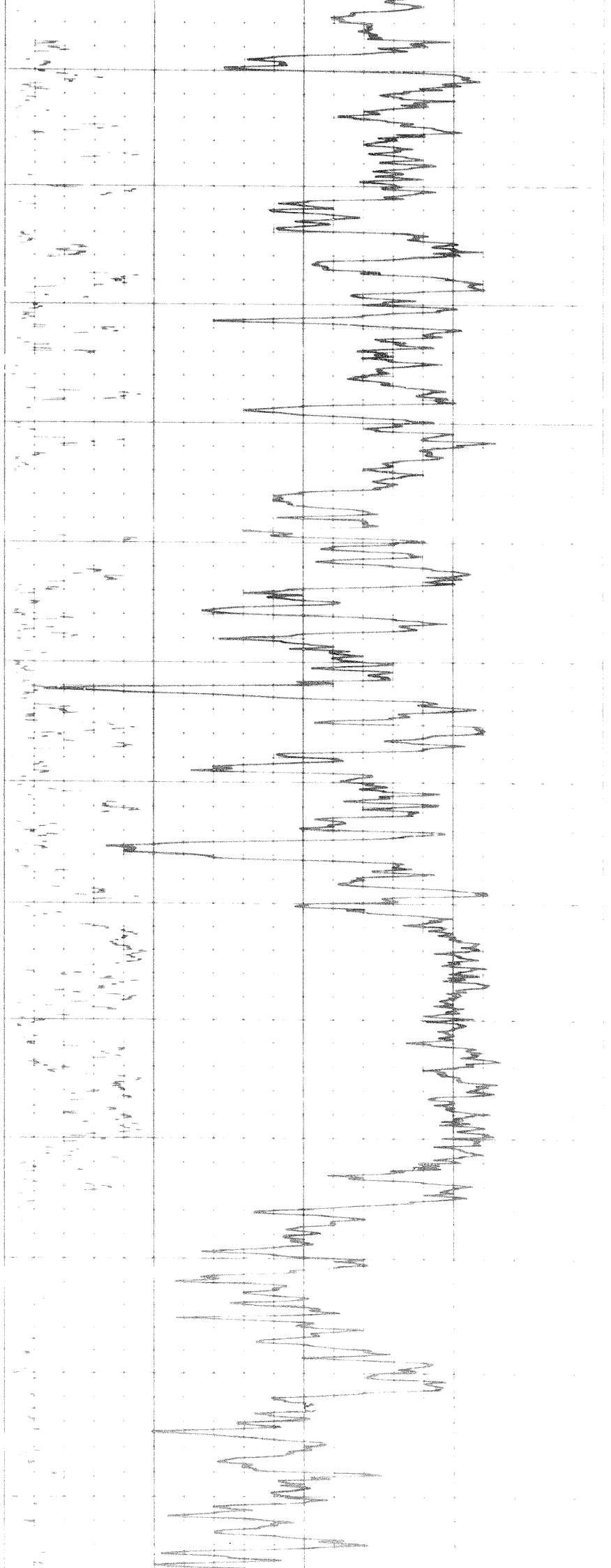
5700



5800







6200

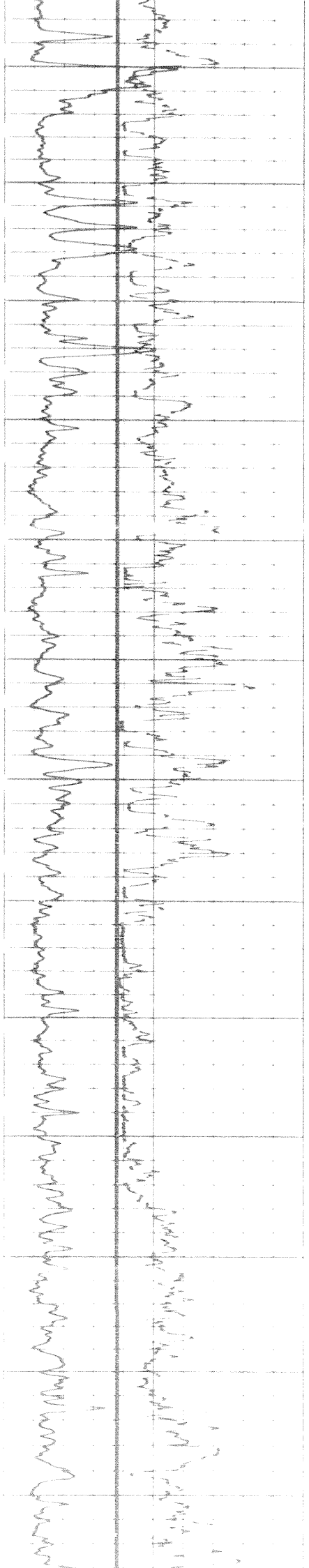
6300

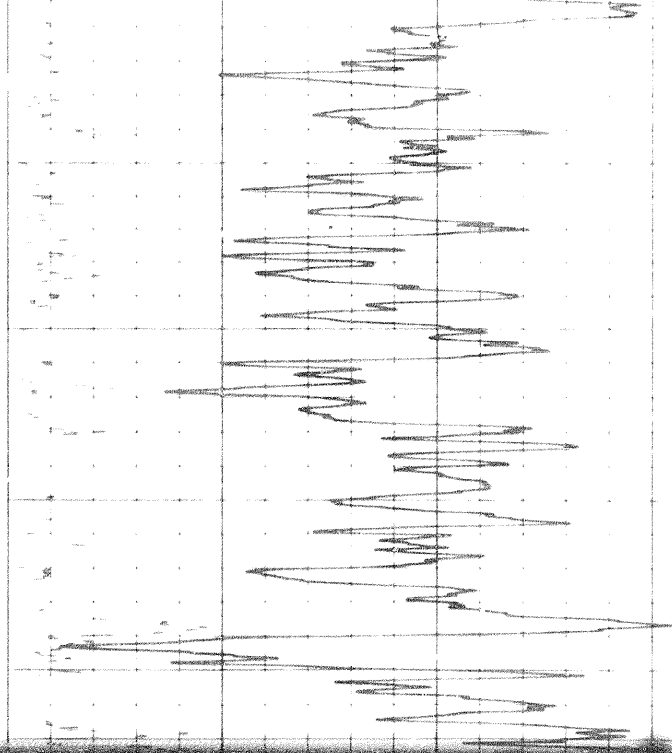
6400

6500

6600

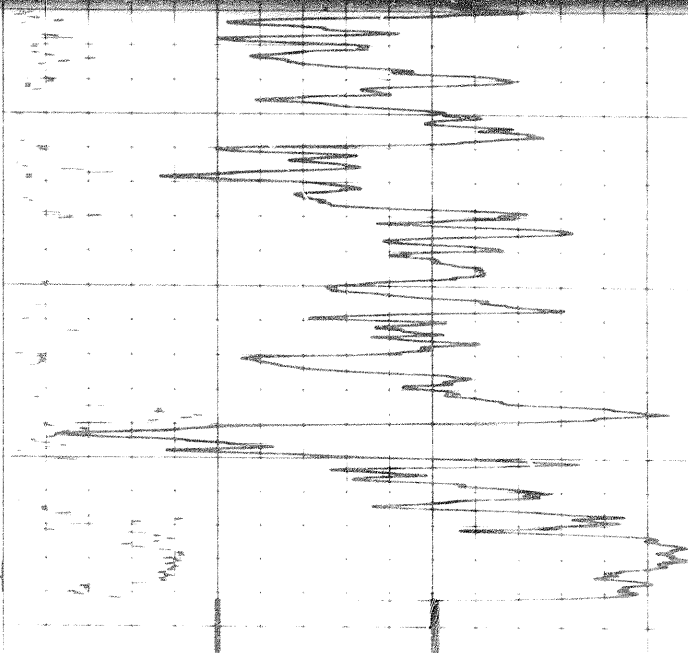
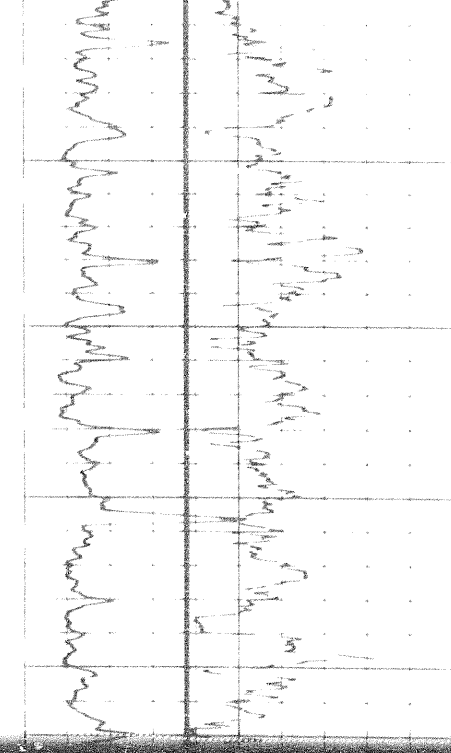
6700





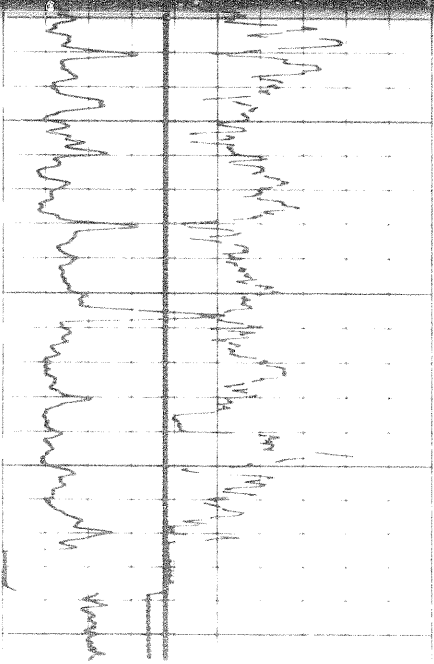
6800

6900

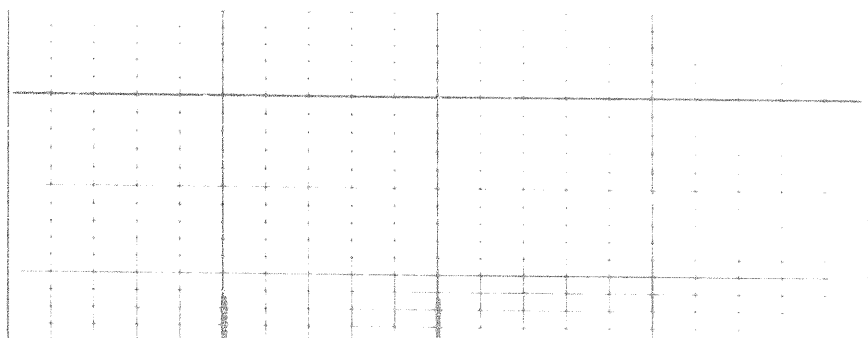


6800

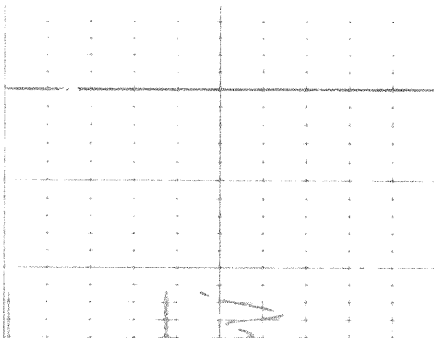
6900

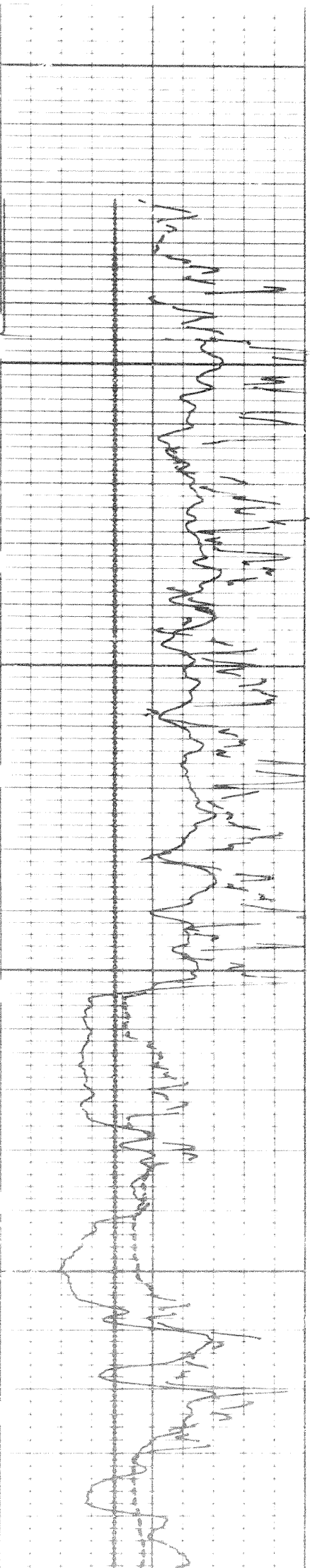


DETAIL LOG
5" = 100



2200

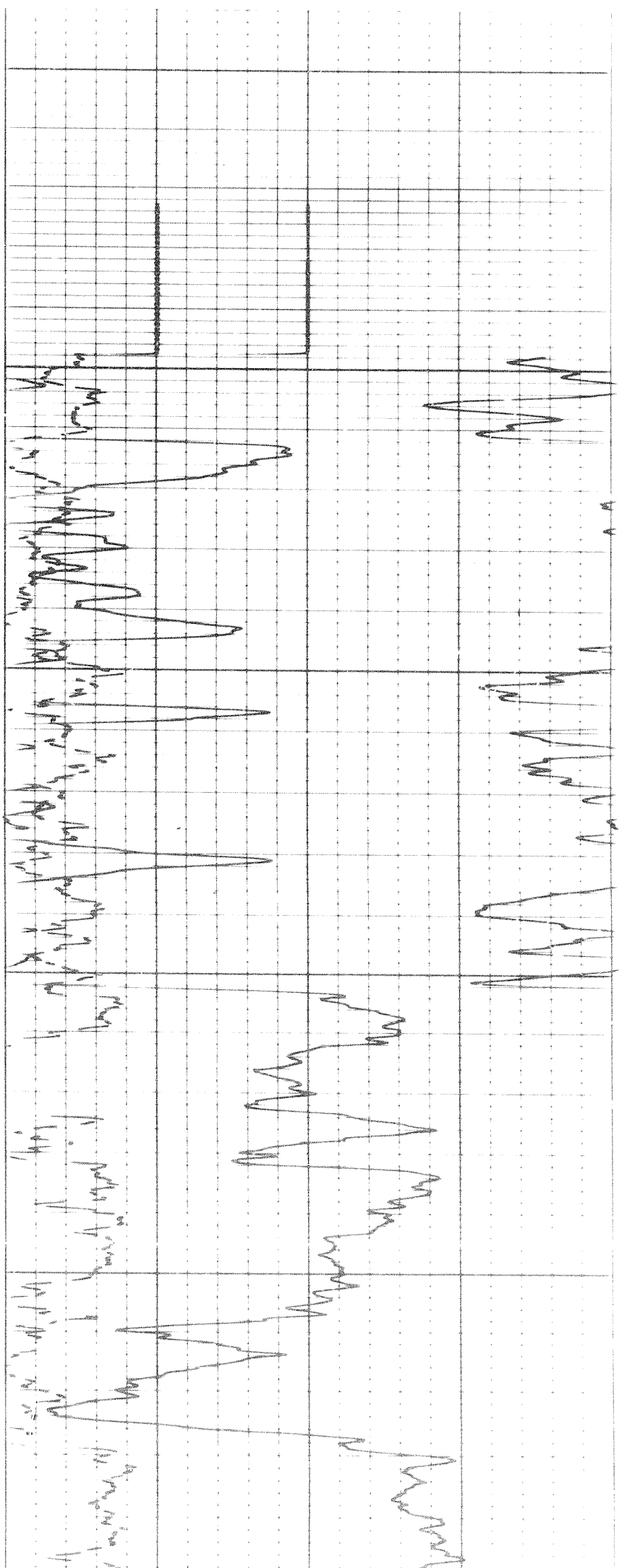


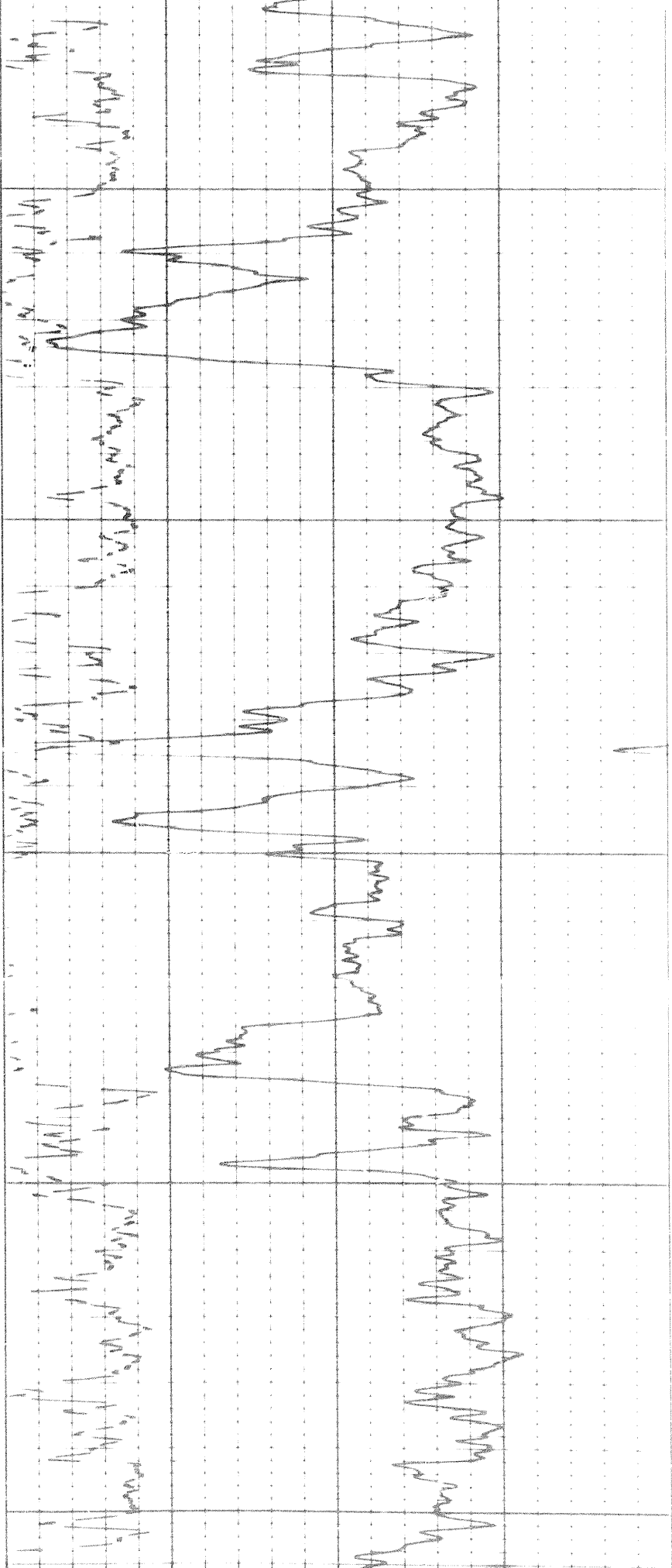


2200

2300

2400

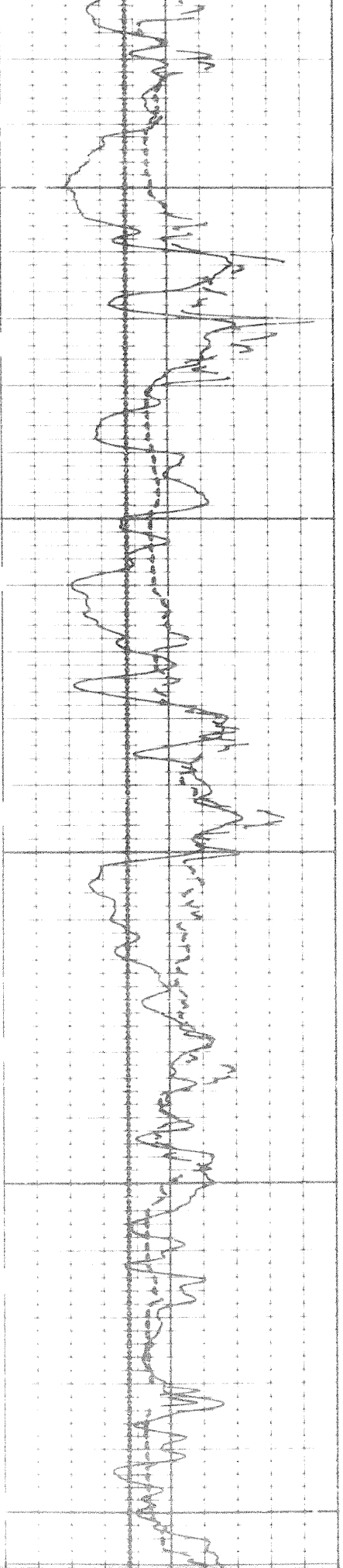


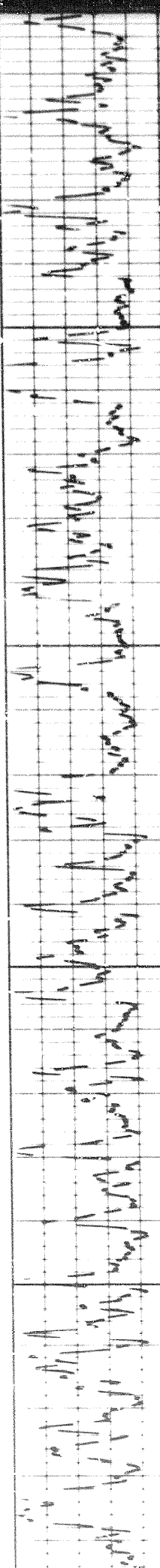
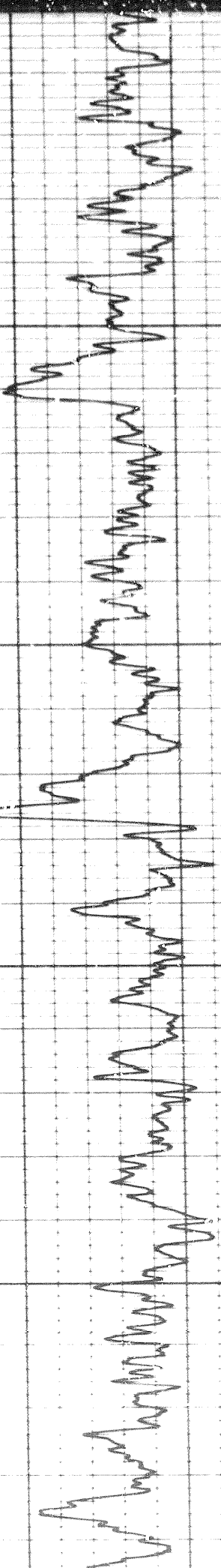


2400

2500

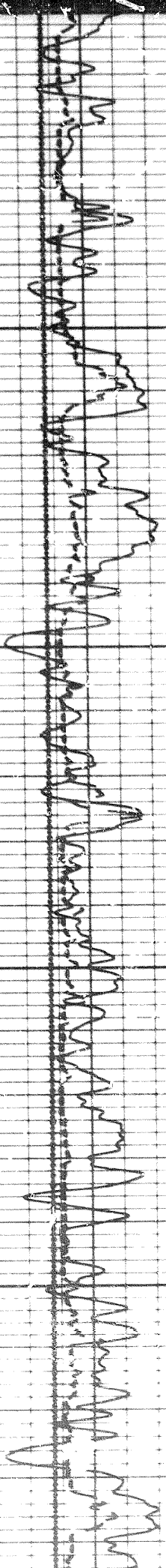
2600

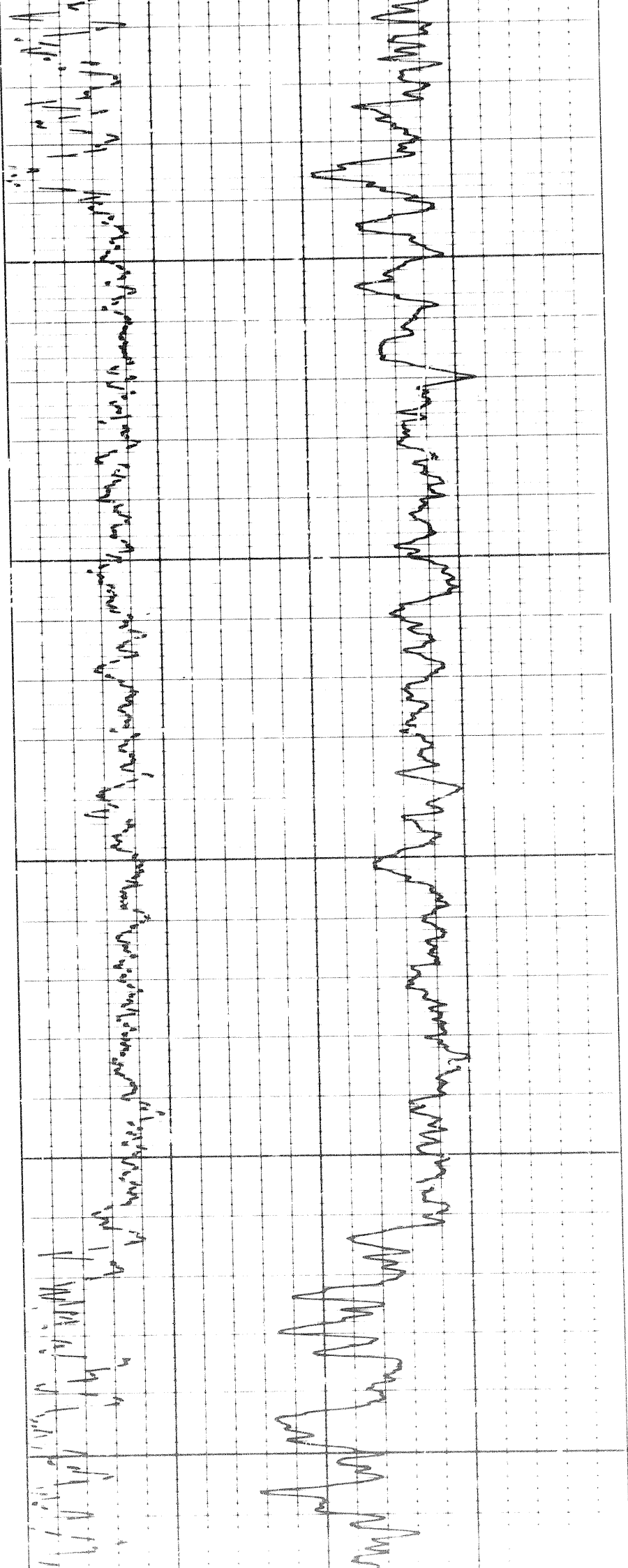




2600

2700

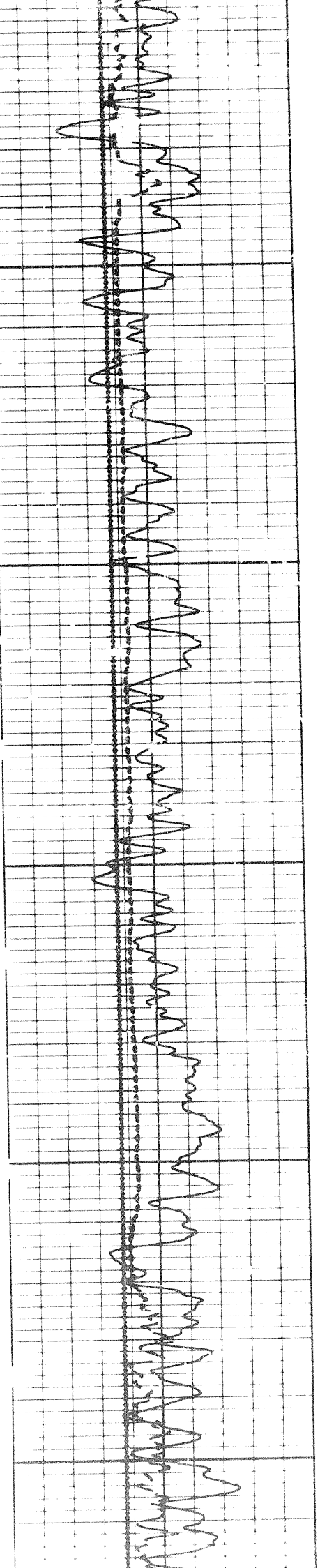


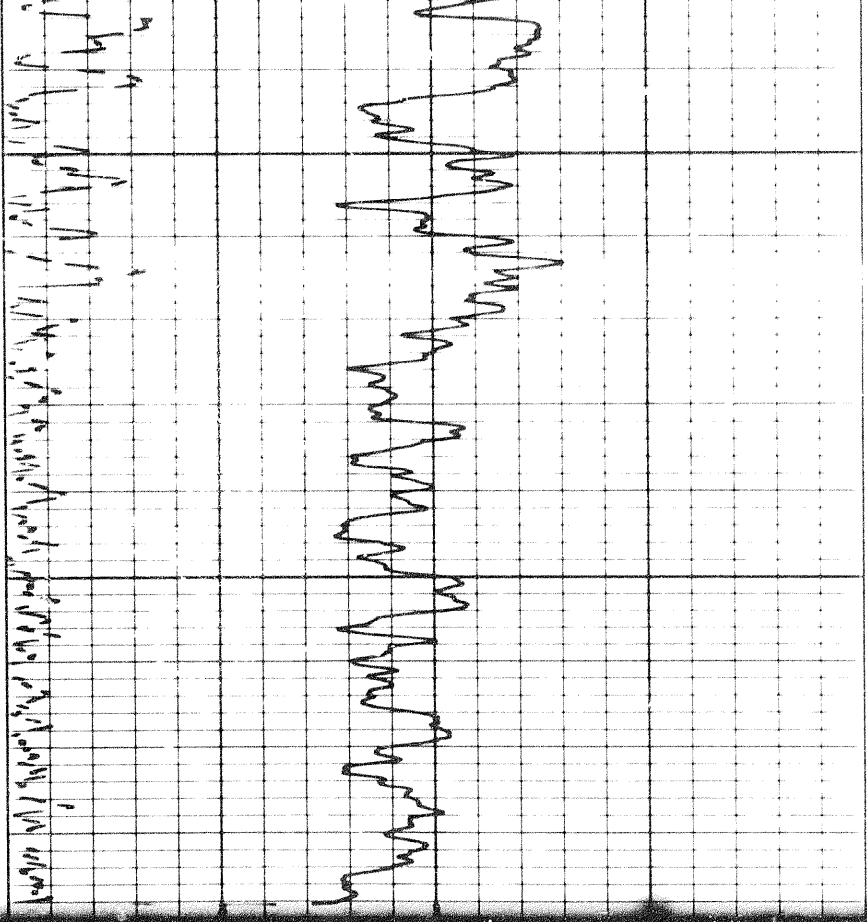


2800

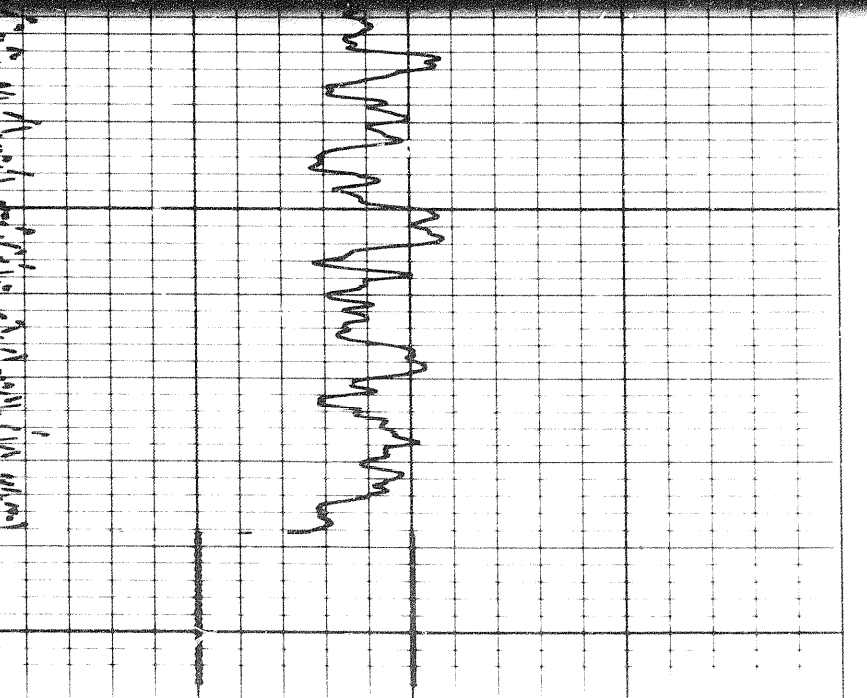
2900

3000

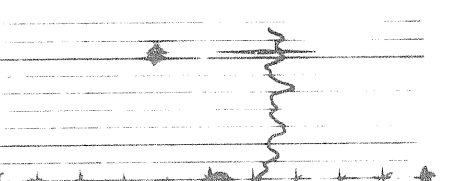
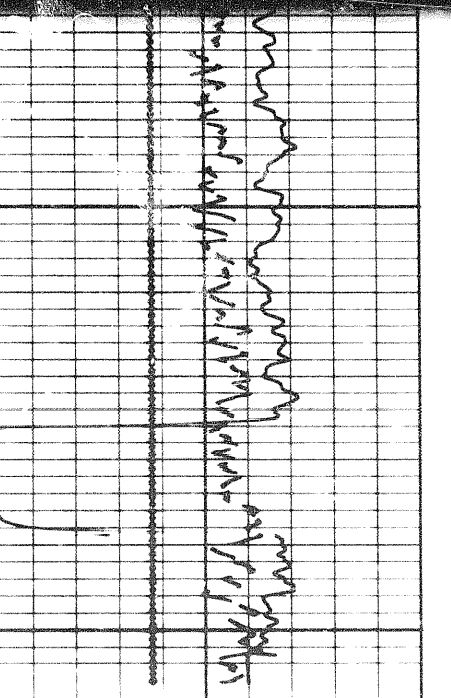
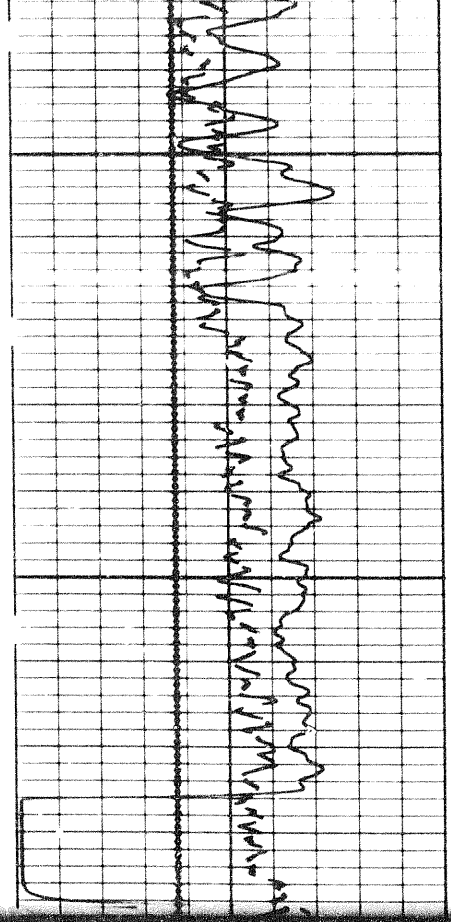


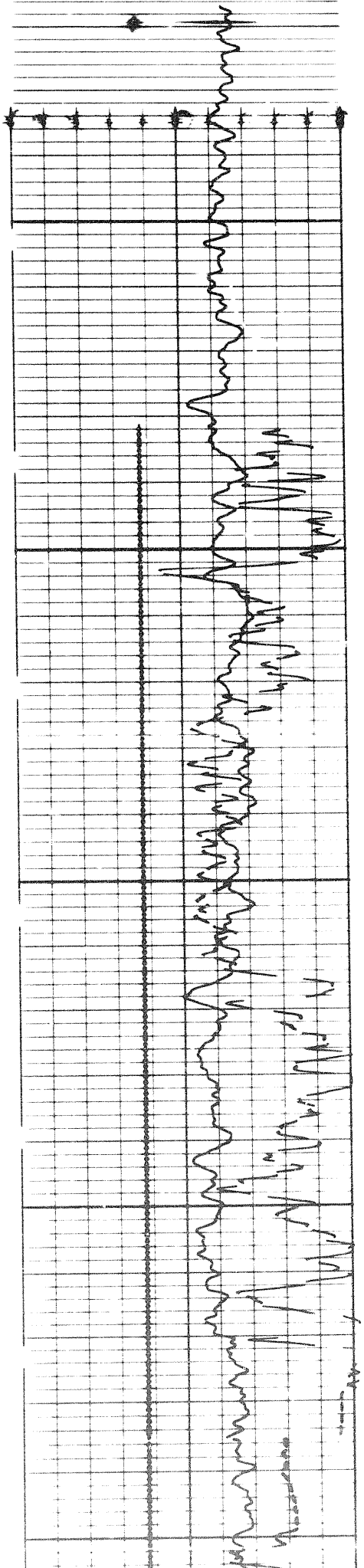


0006



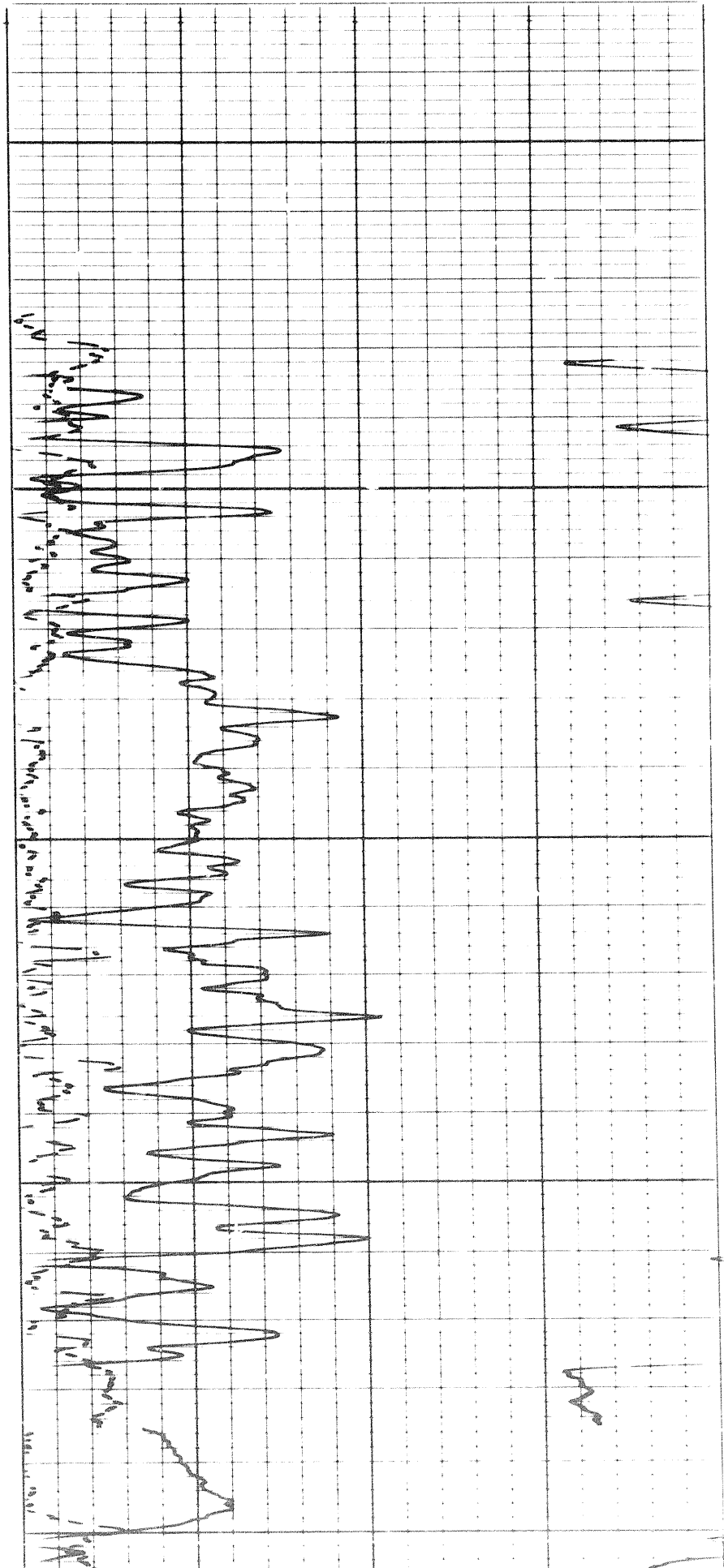
0006

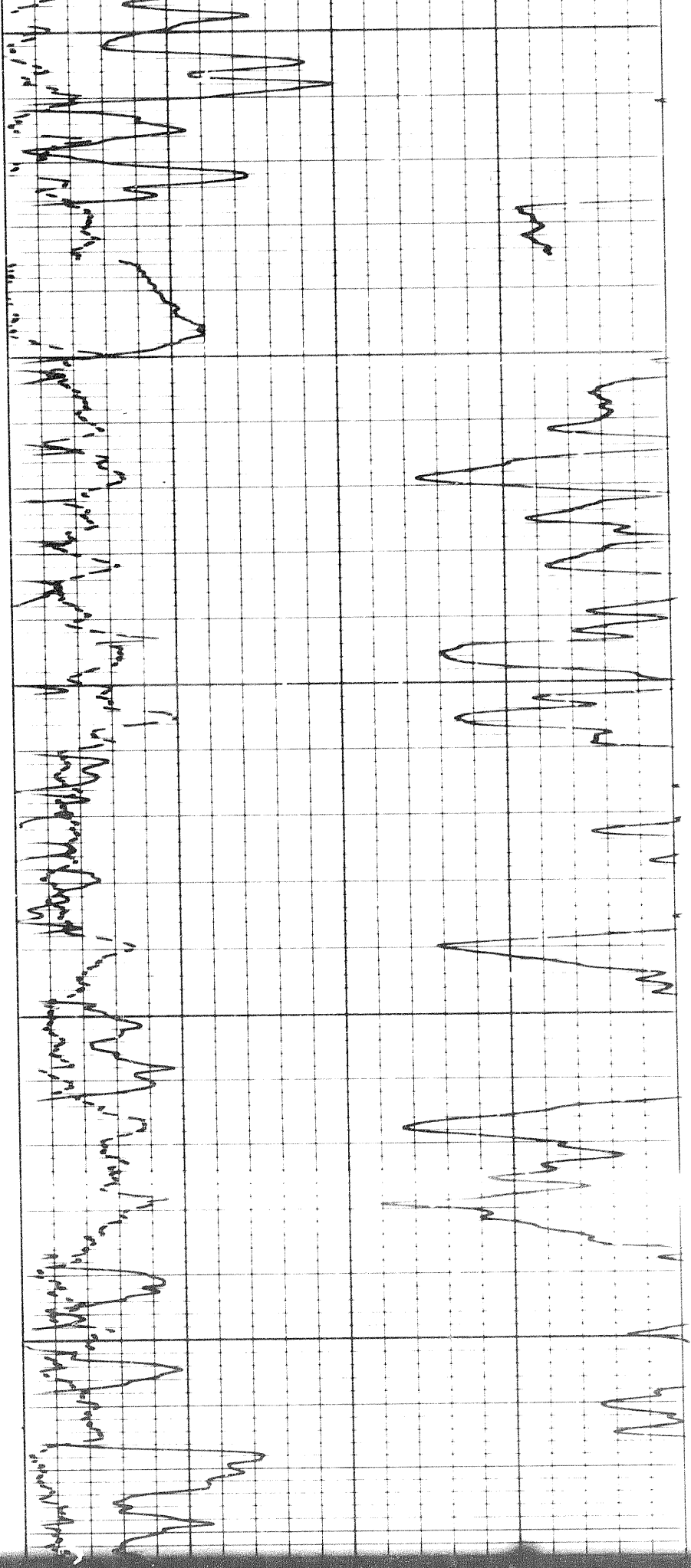




4900

5000

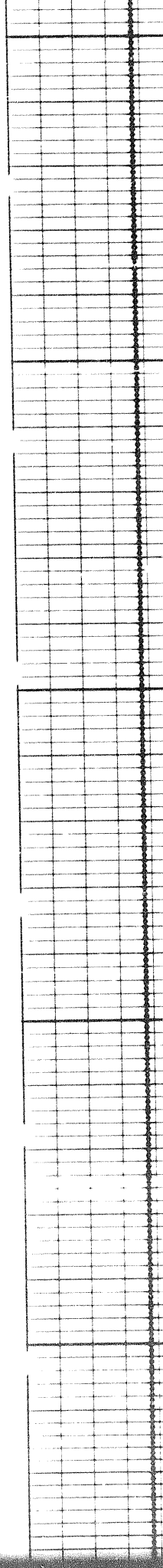
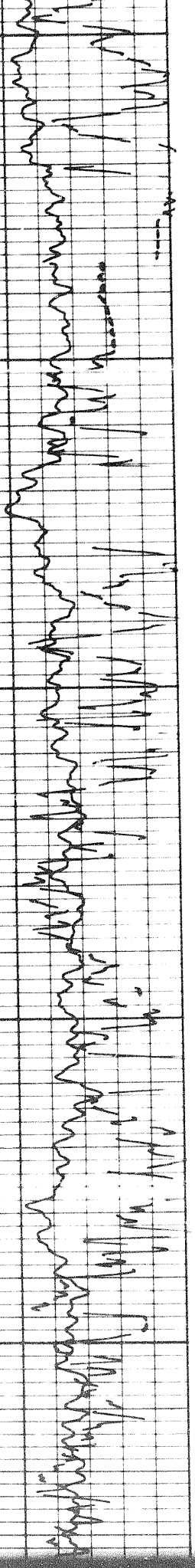


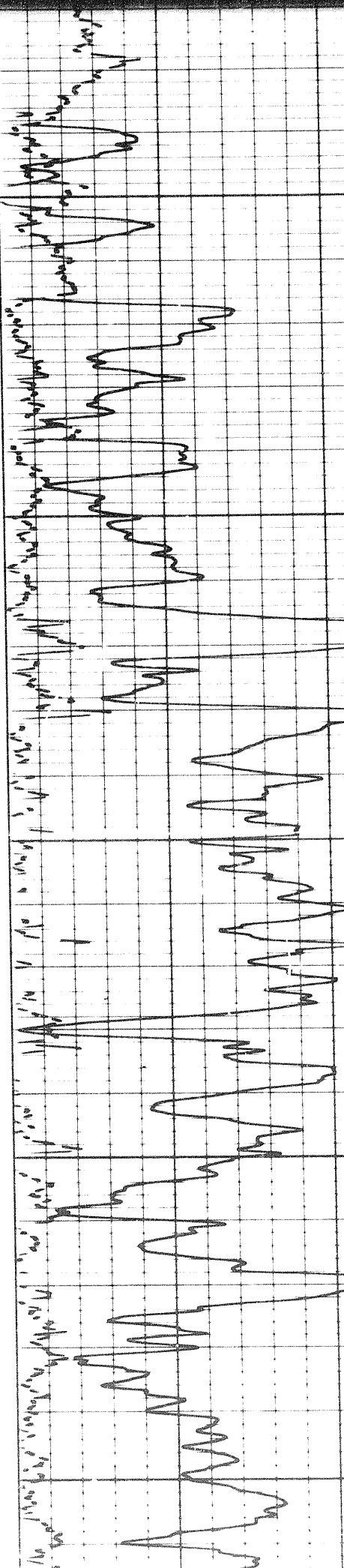
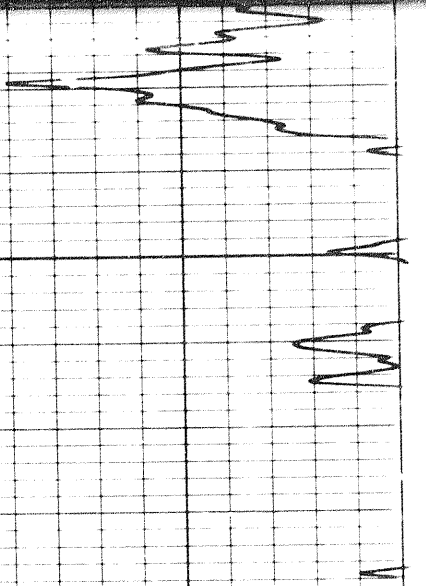


5000

5100

5200

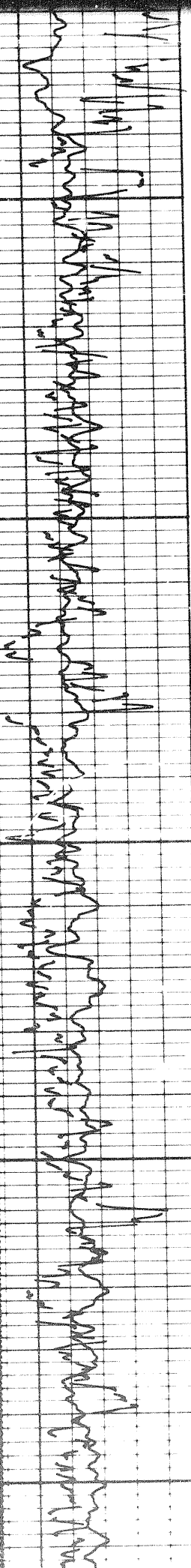


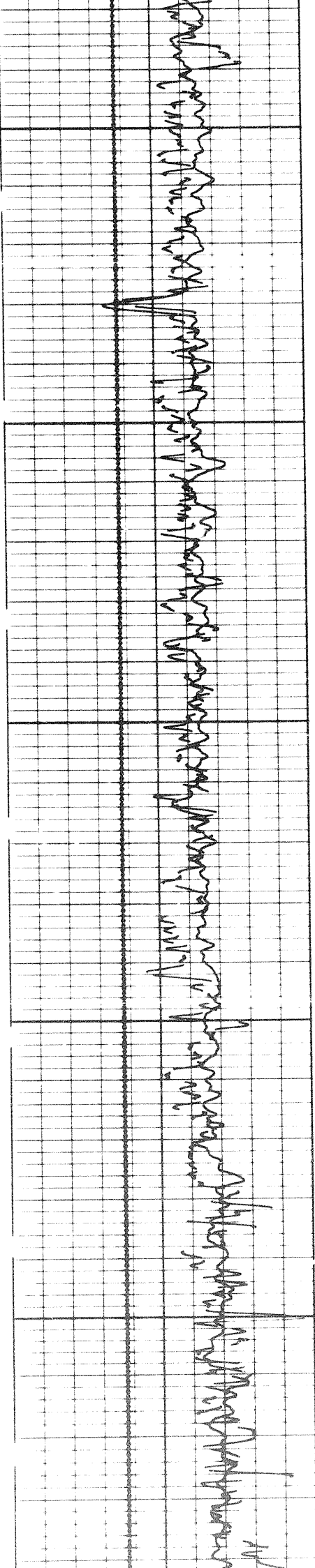


5200

5300

5400

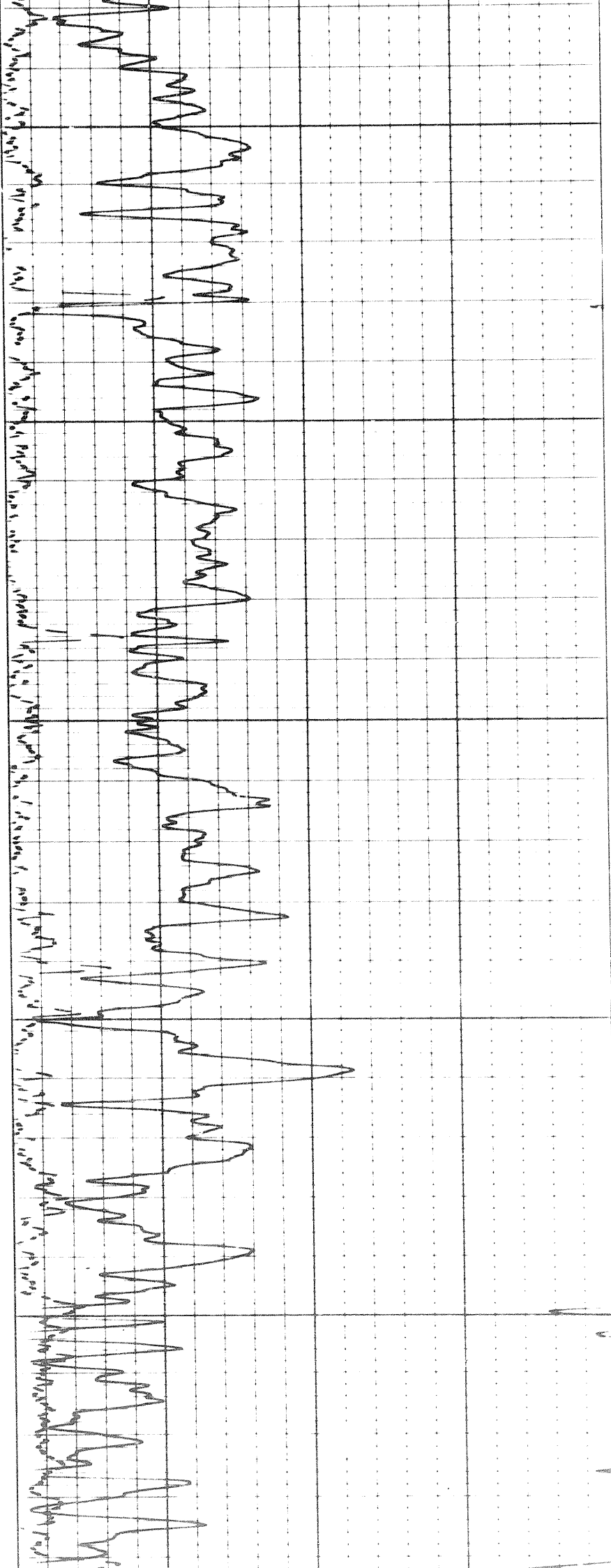




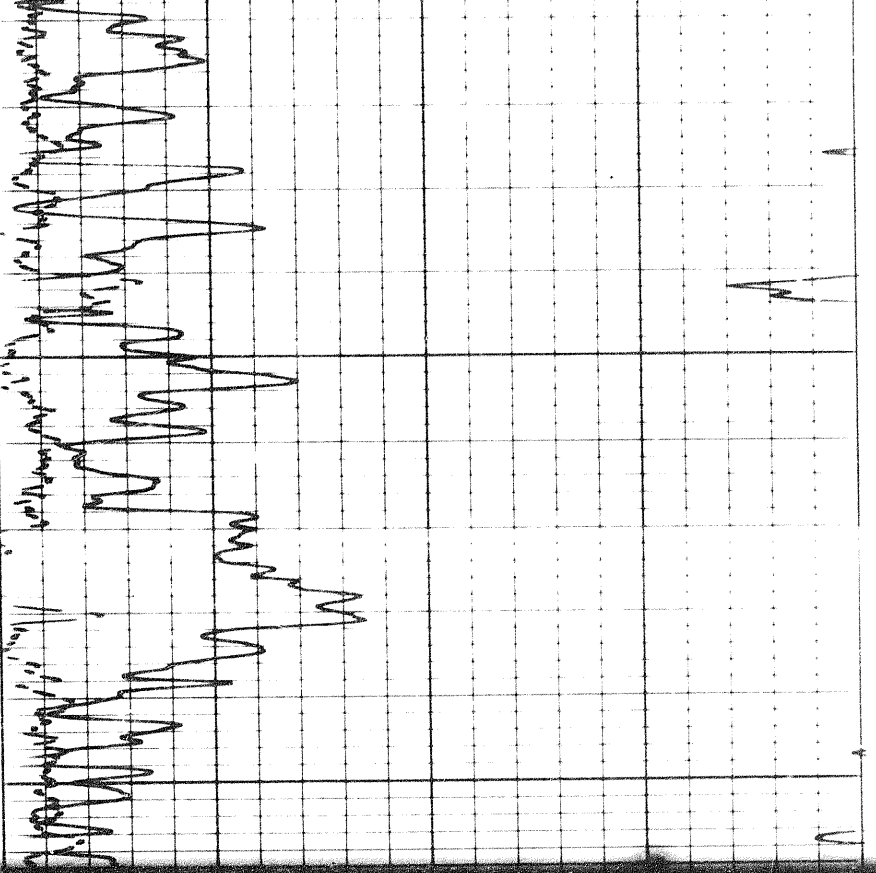
5400

5500

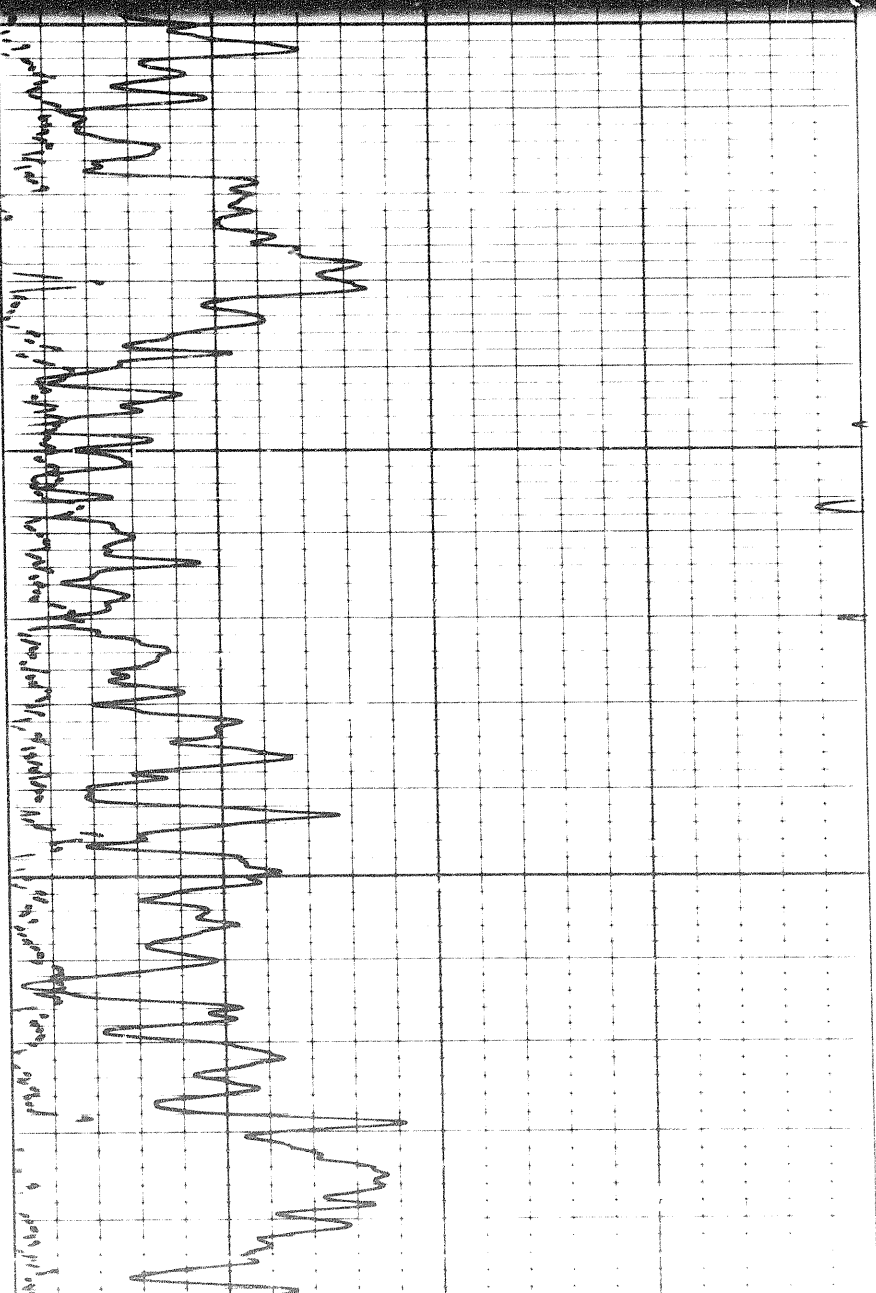
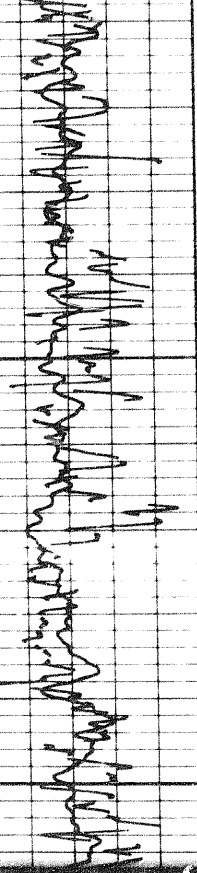
5600



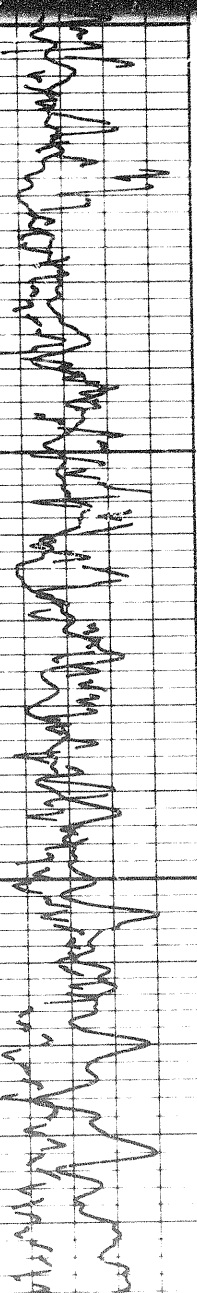
7 of

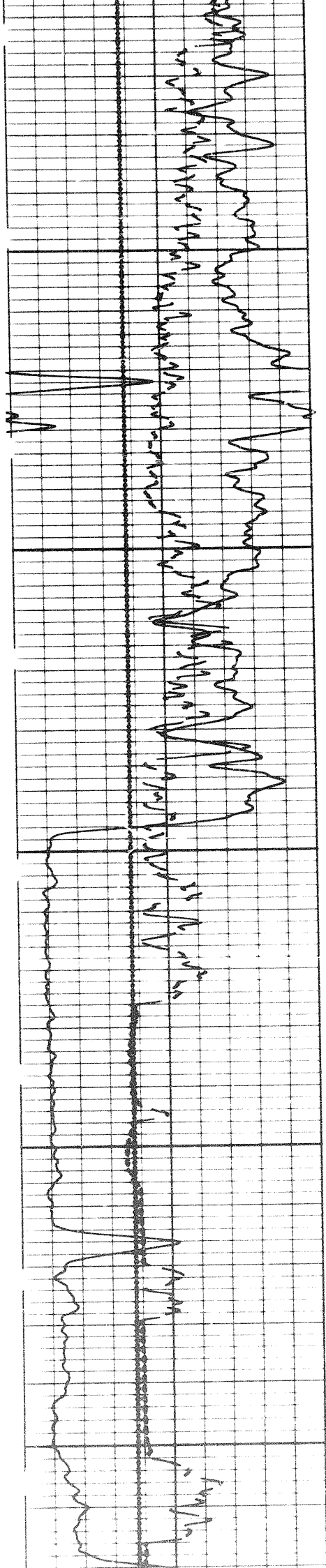


5700



5700

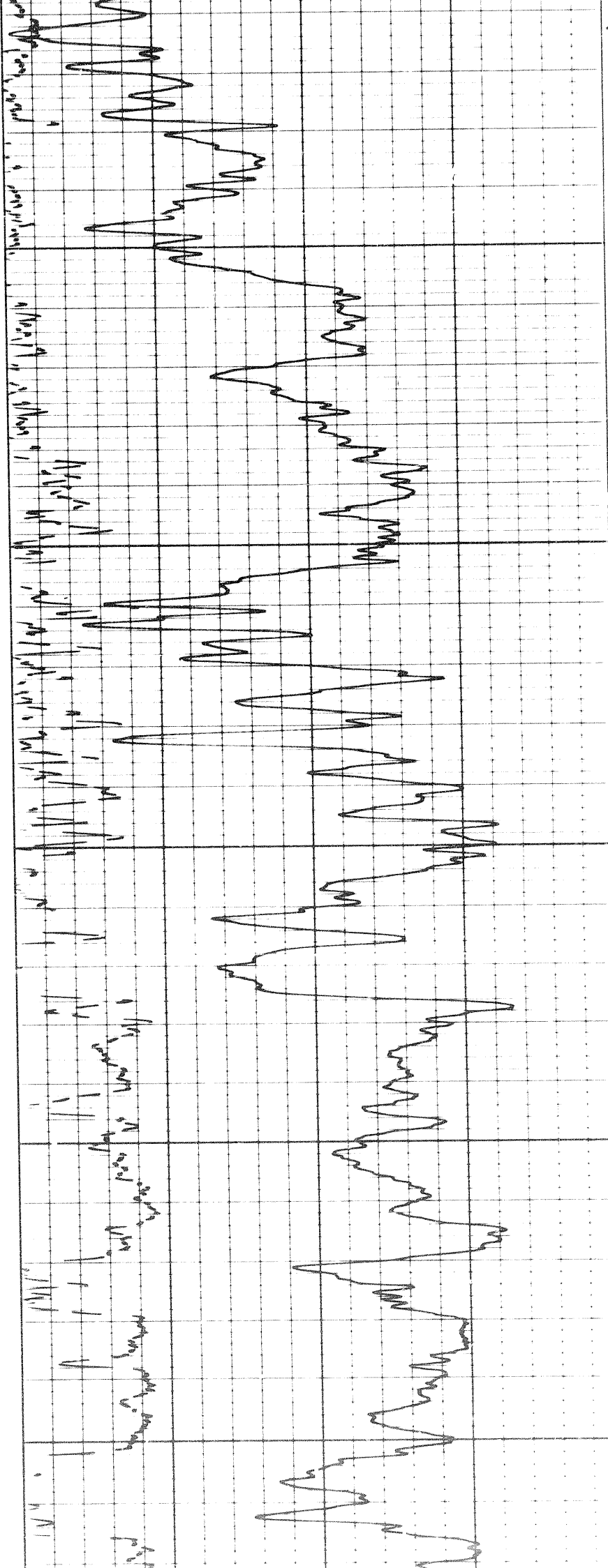




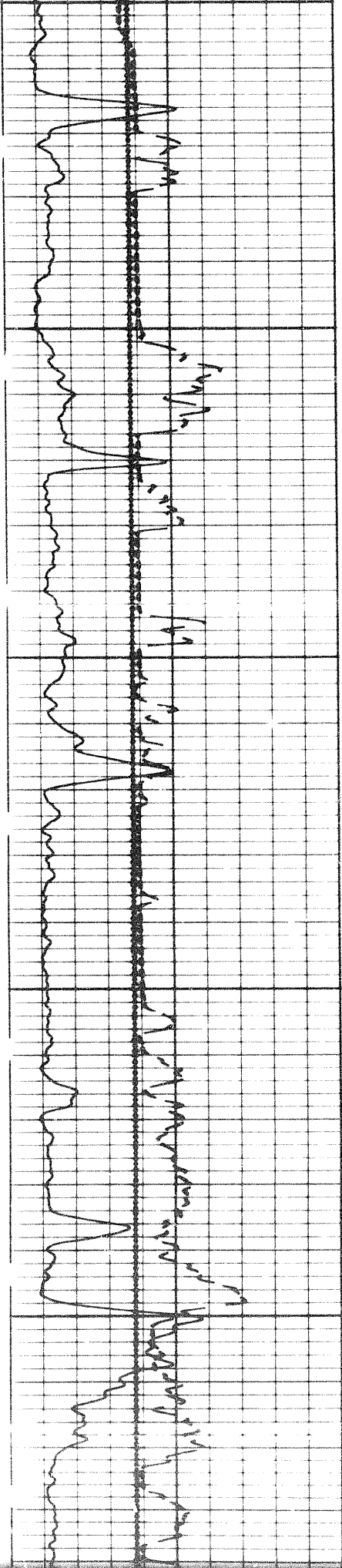
5800

5900

6000

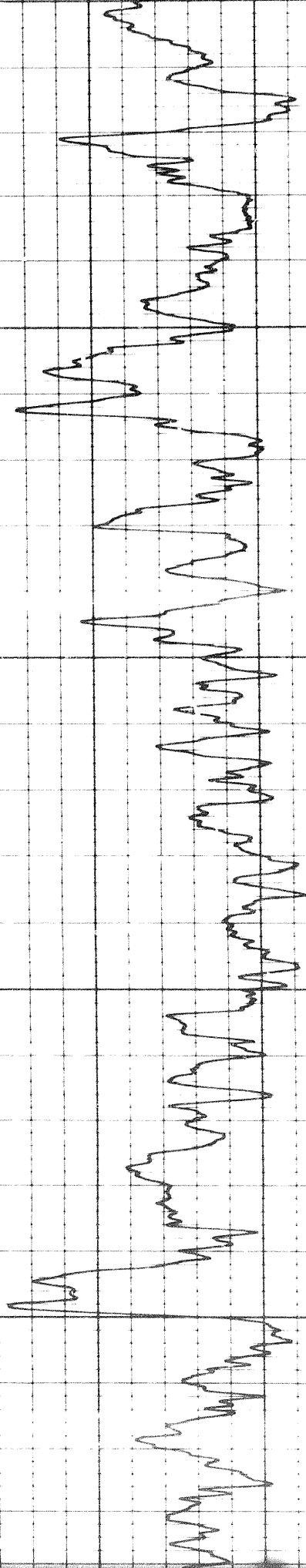
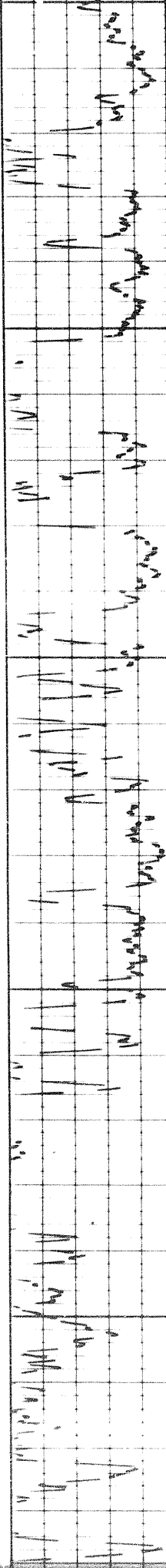


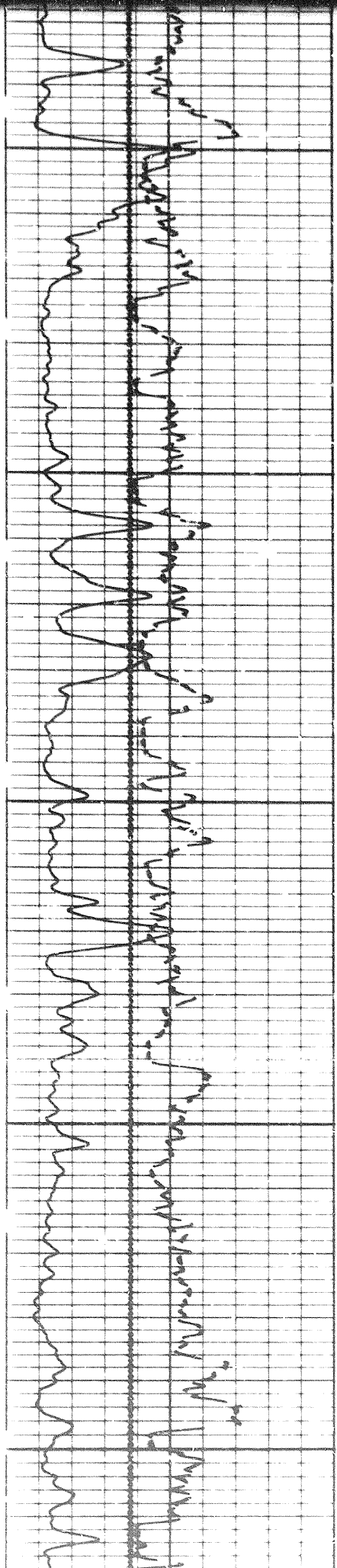
102



0000

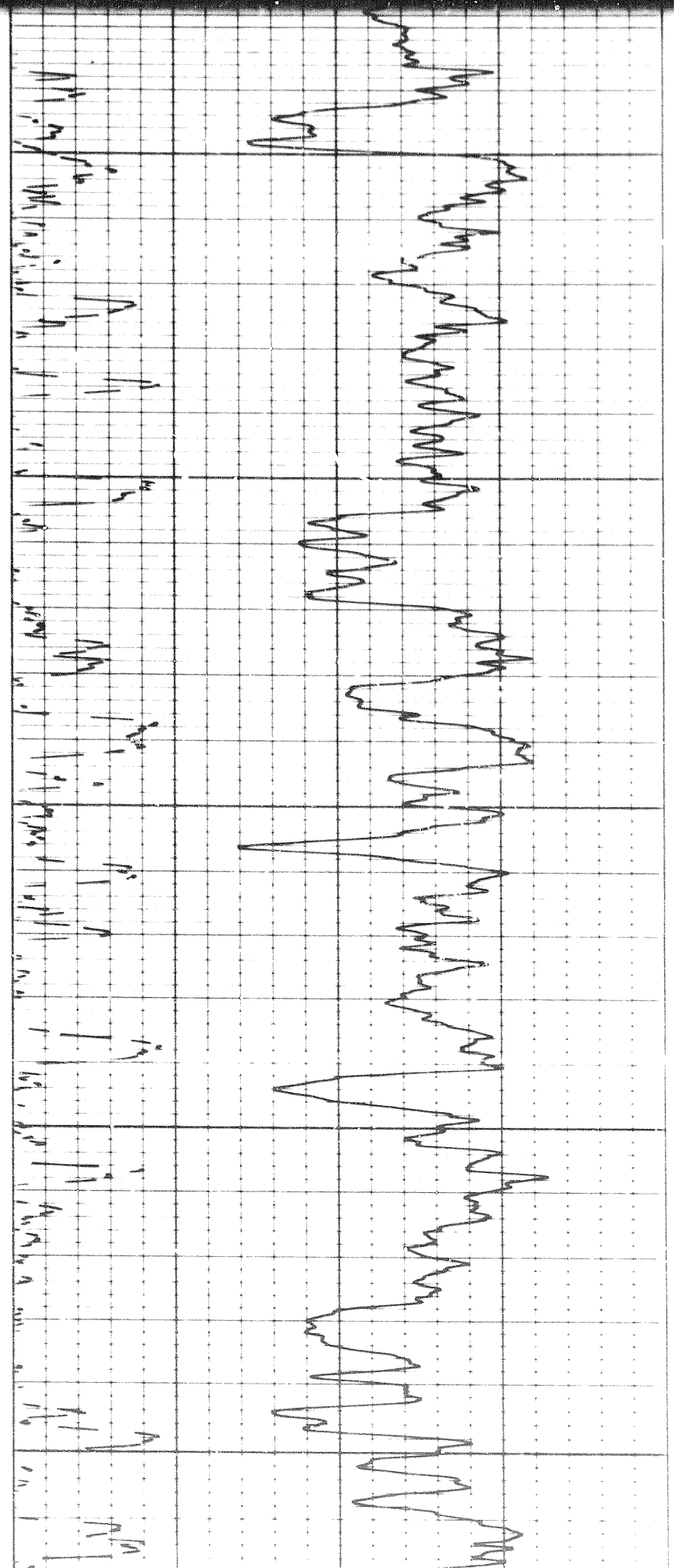
0009

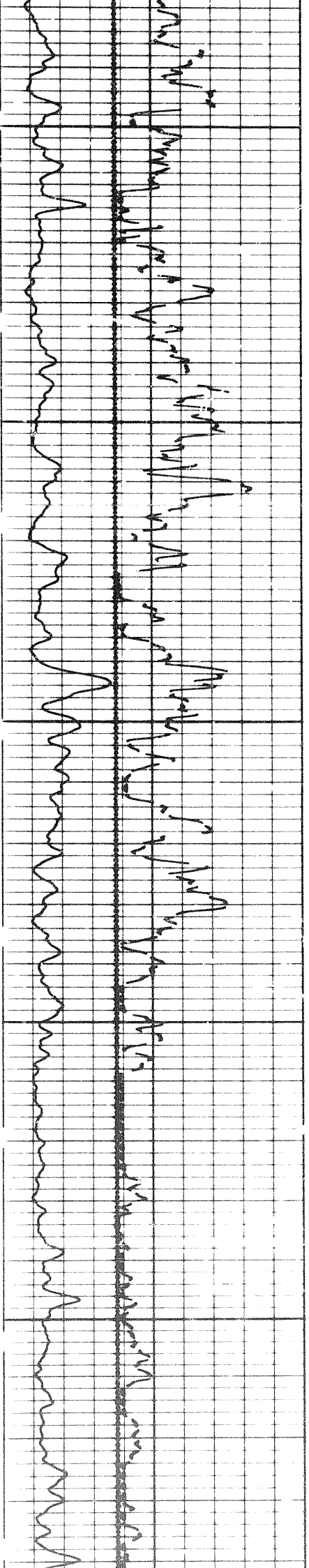




6200

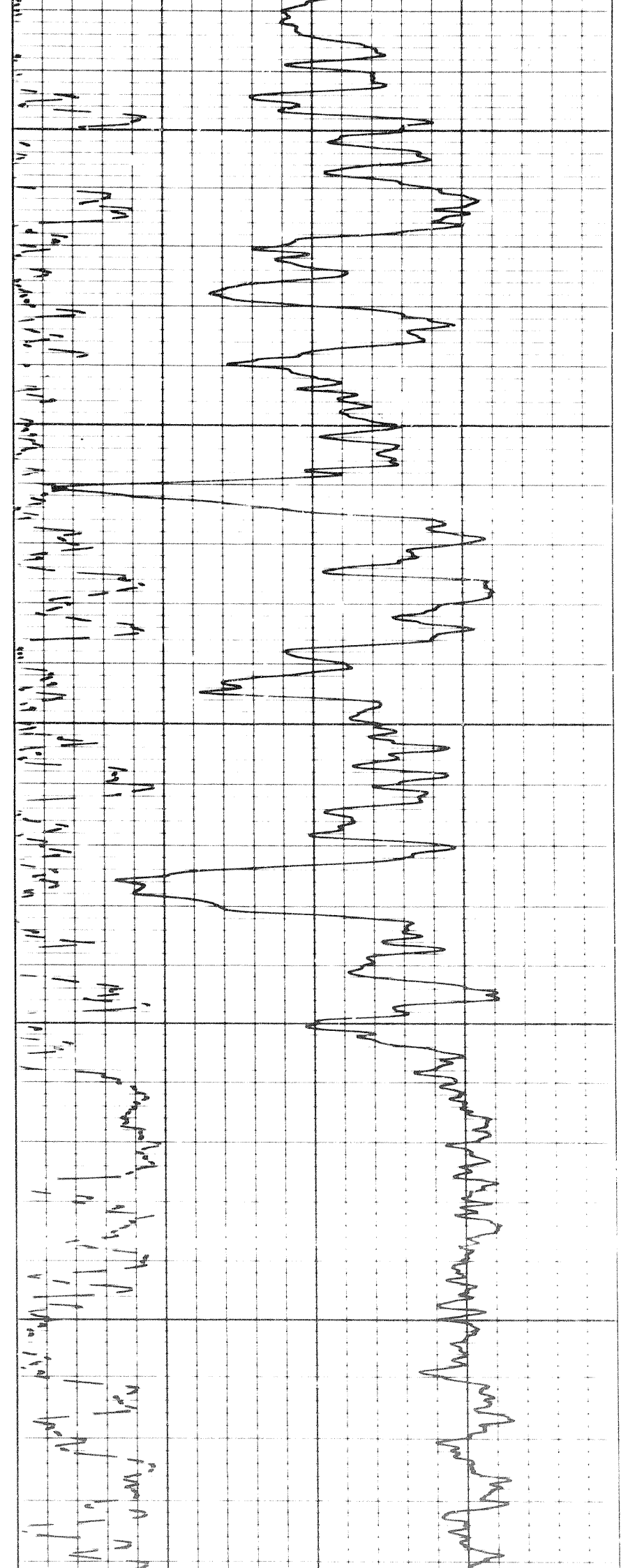
6300



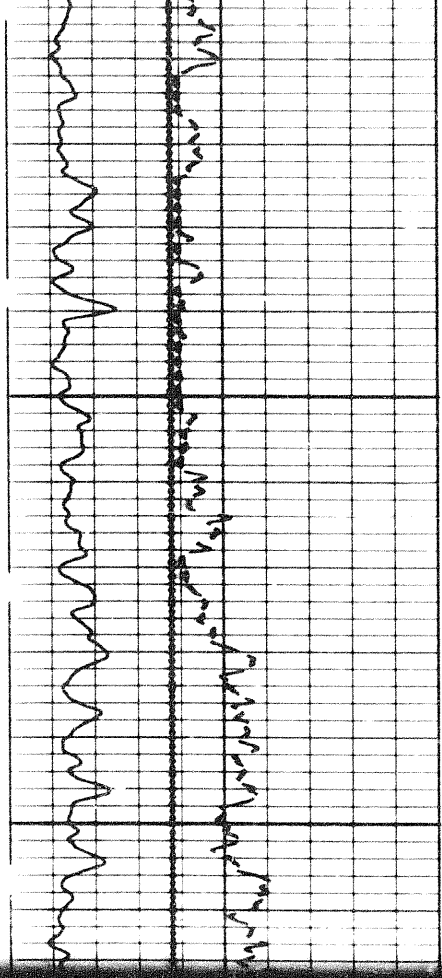


6400

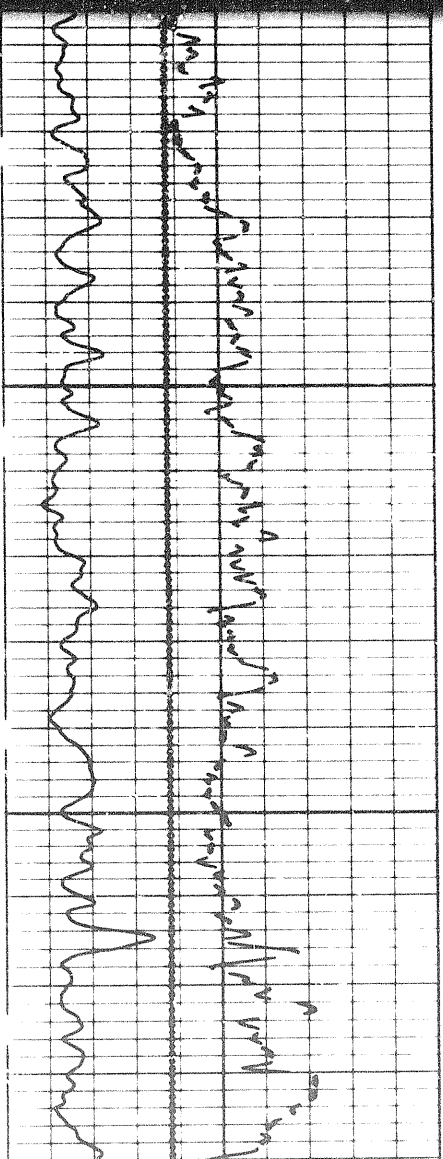
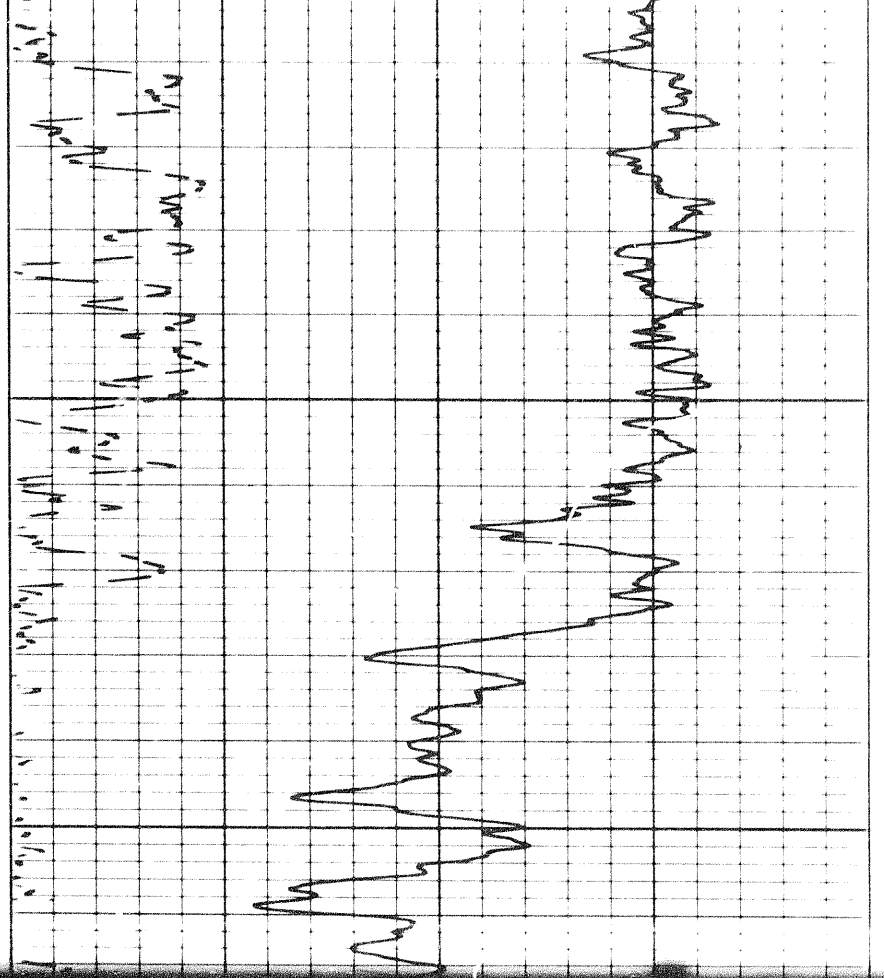
6500



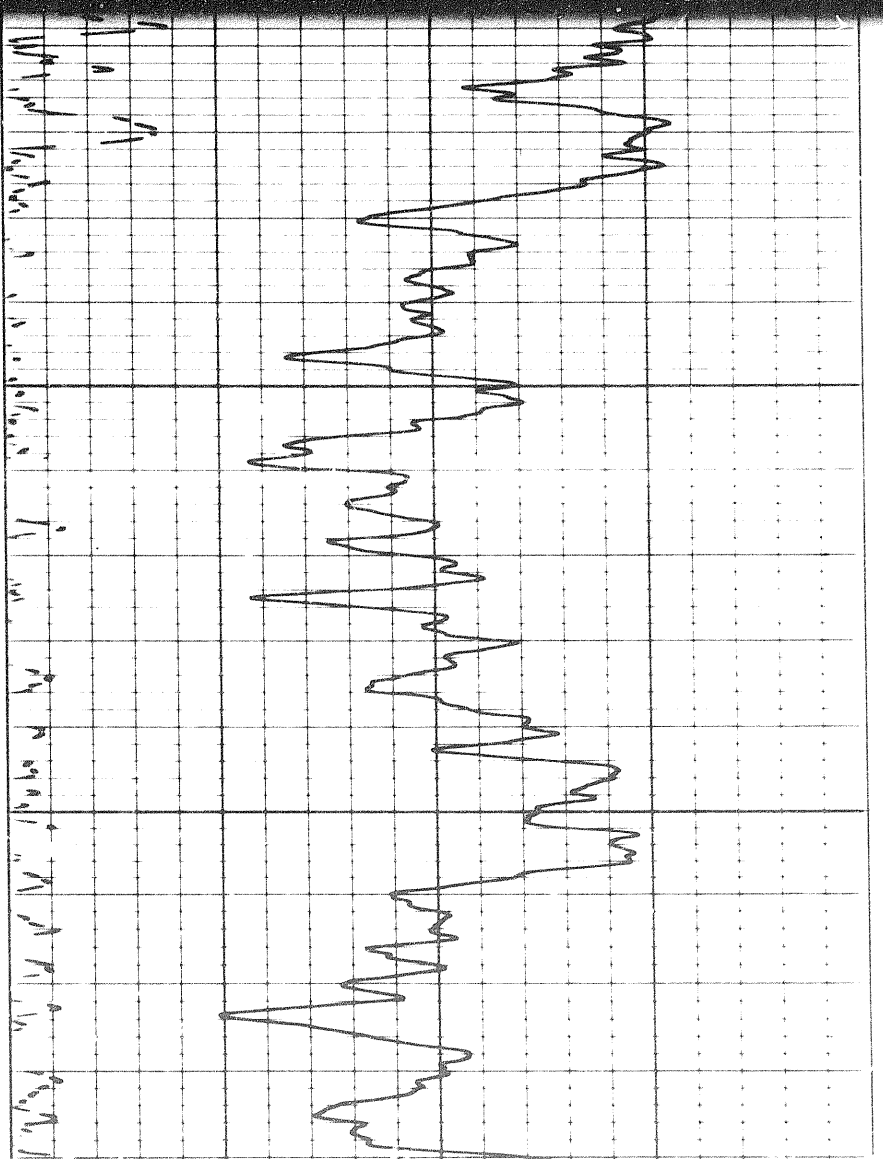
Feb

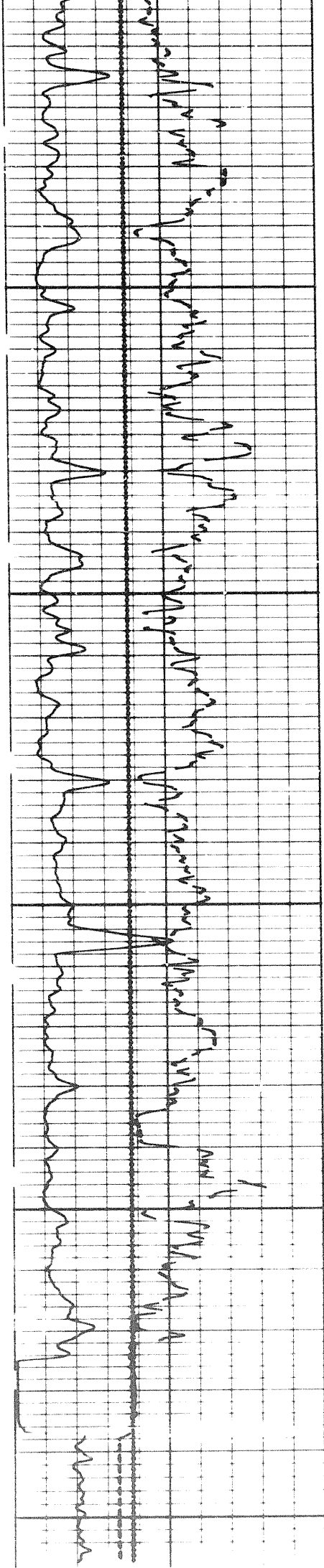


0099



6700

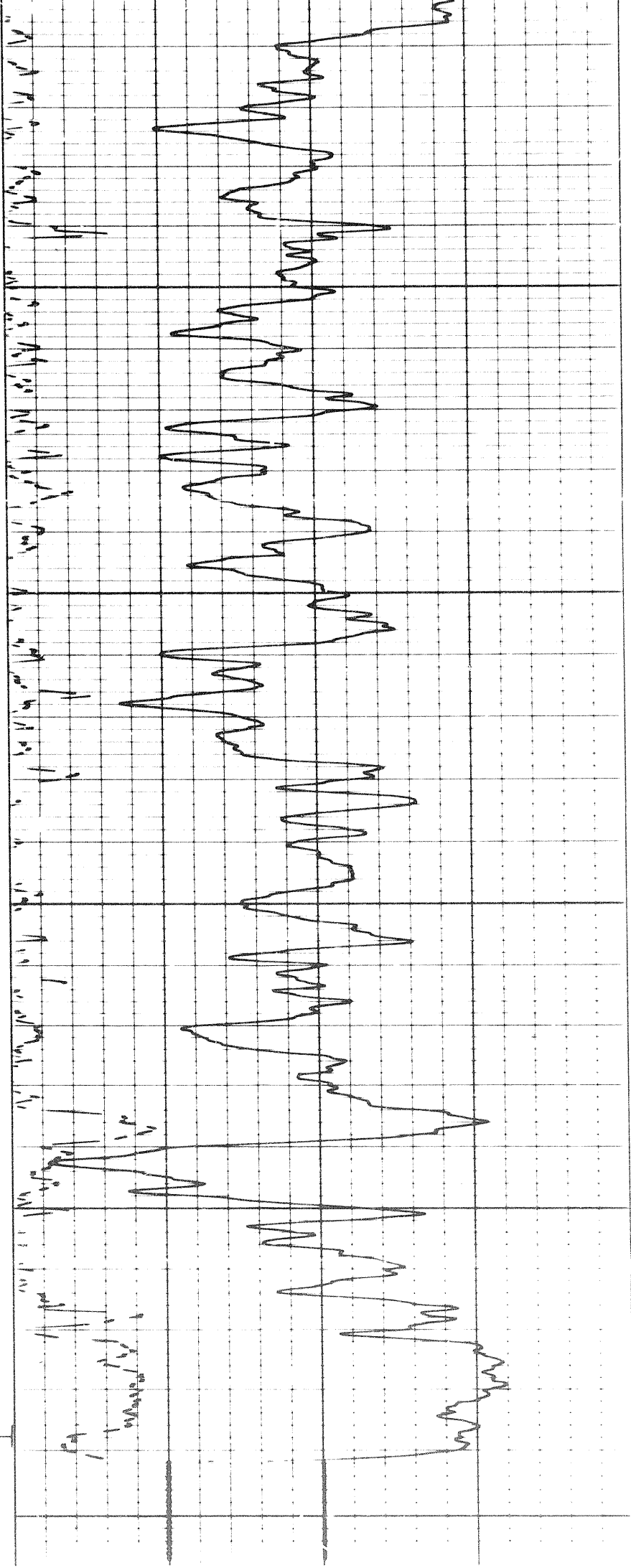


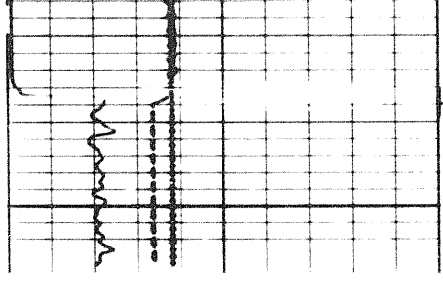


0069

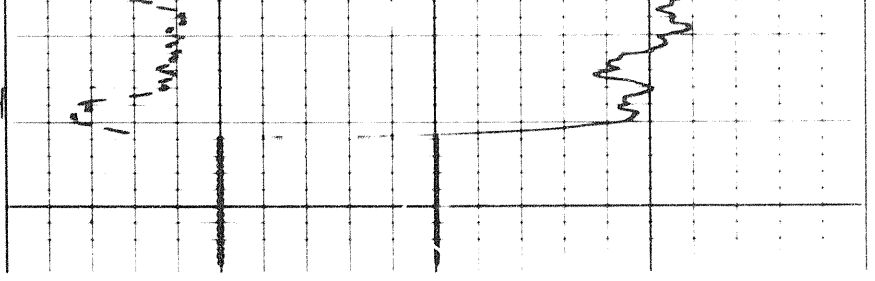
0069

FR

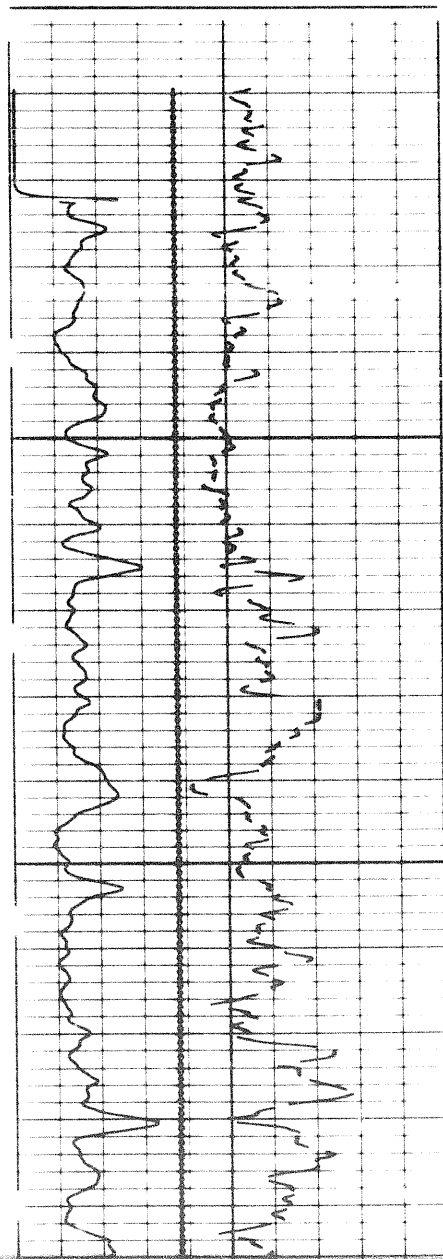




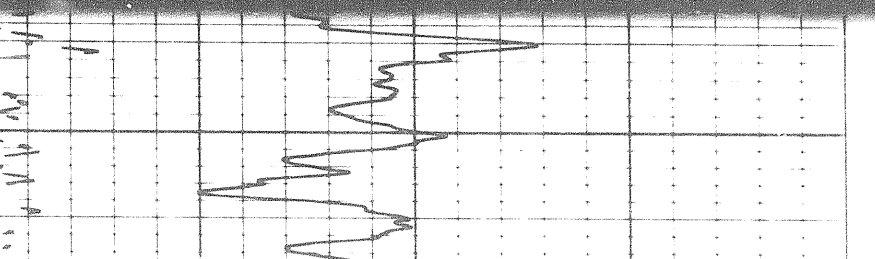
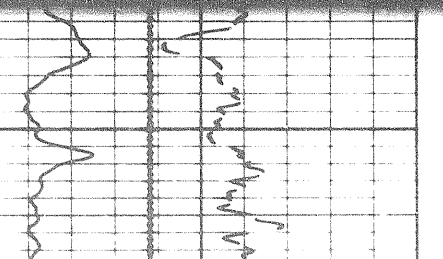
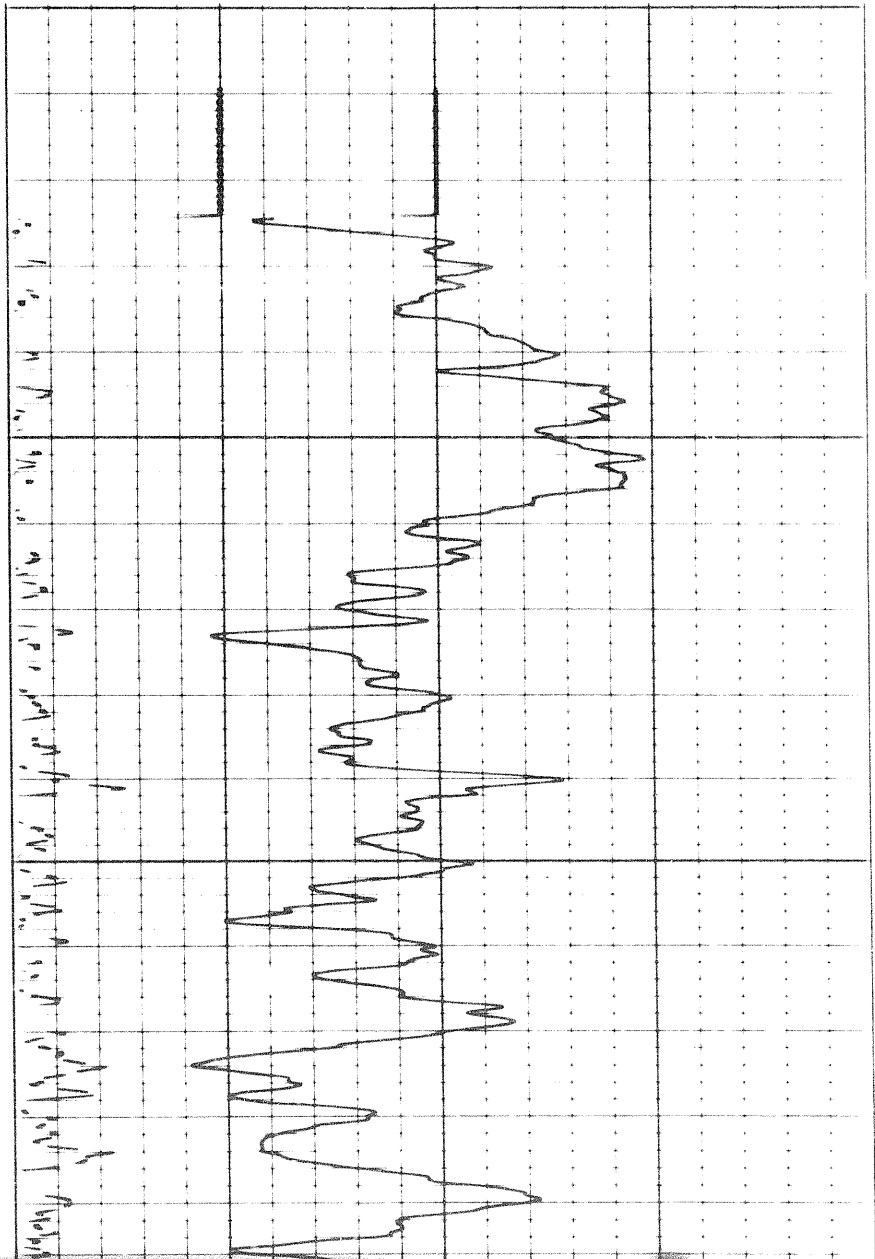
FR

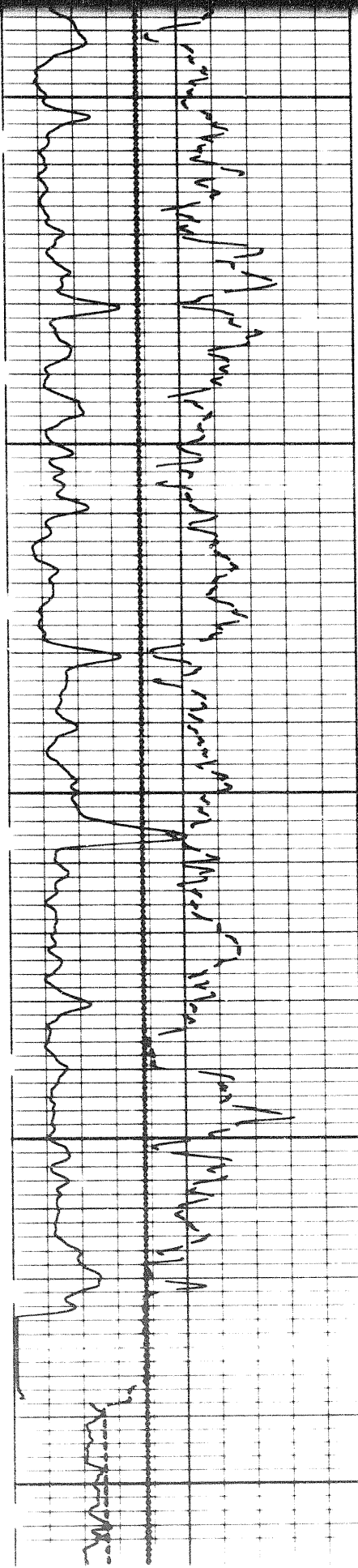


REPEAT SECTION



6/700

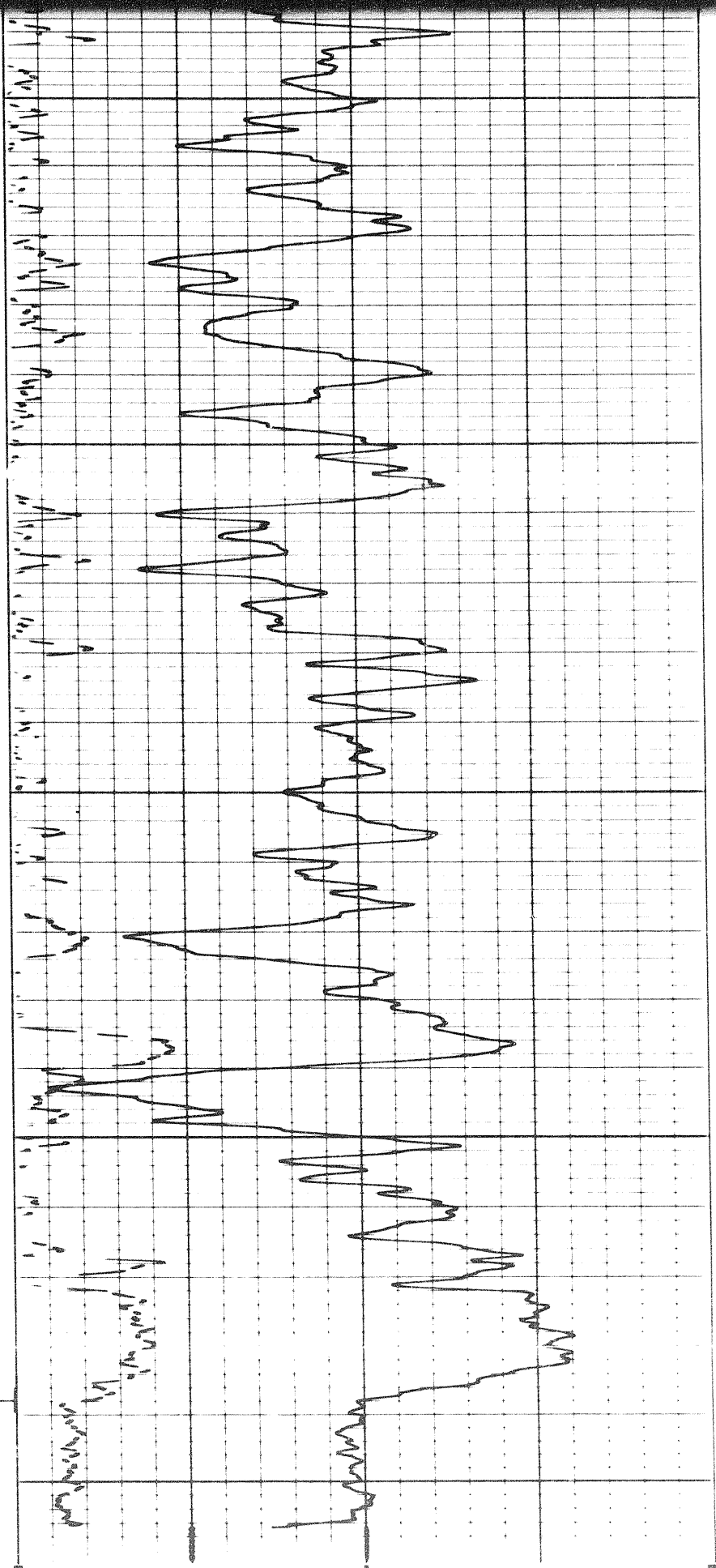




6900

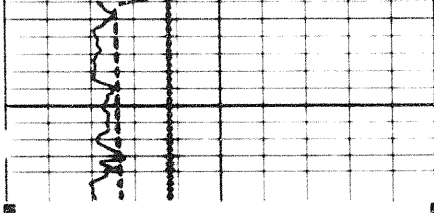
6900

FR



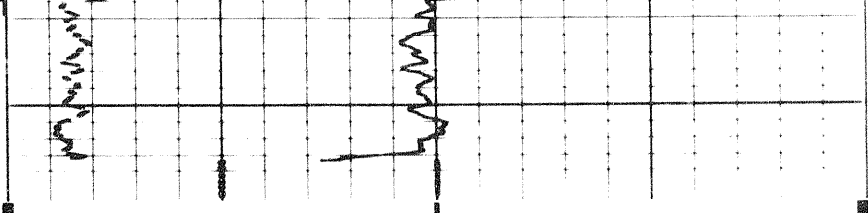
(-) 0.25 0 0.25

6 7 8 9 10 11 12 13 14



6 7 8 9 10 11 12 13 14

CALIPER
hole diameter in inches



(+) 0.25 0 (-) 0.25

DENSITY CORRECTION
 $\Delta\rho$ - gm/cc

2.0 2.5 3.0

Speed in FPM

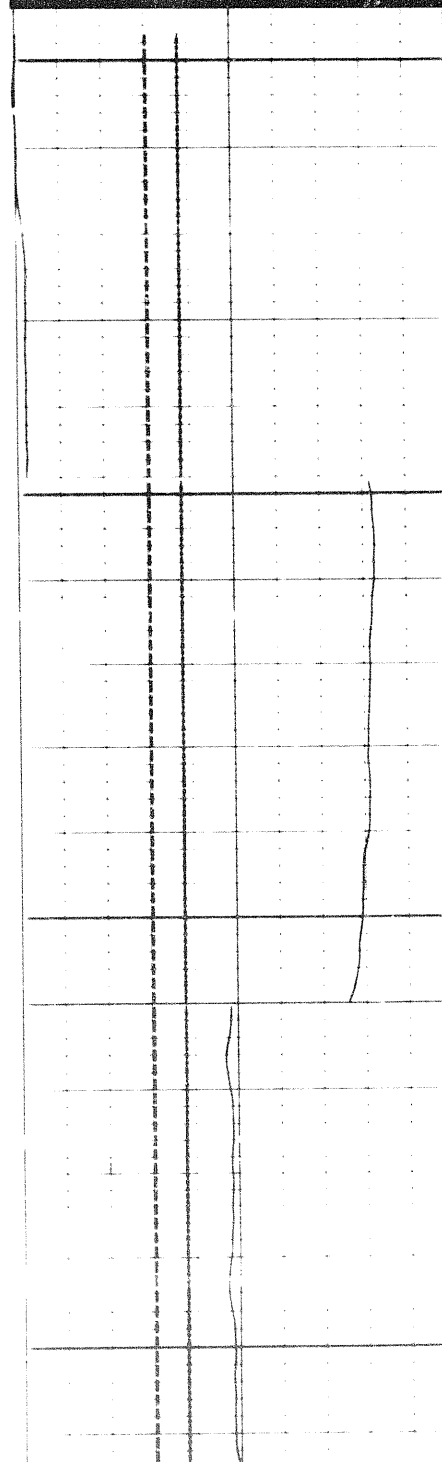
Sens. 150 T.C. 2
Zero 0 div. to left

0 150 300

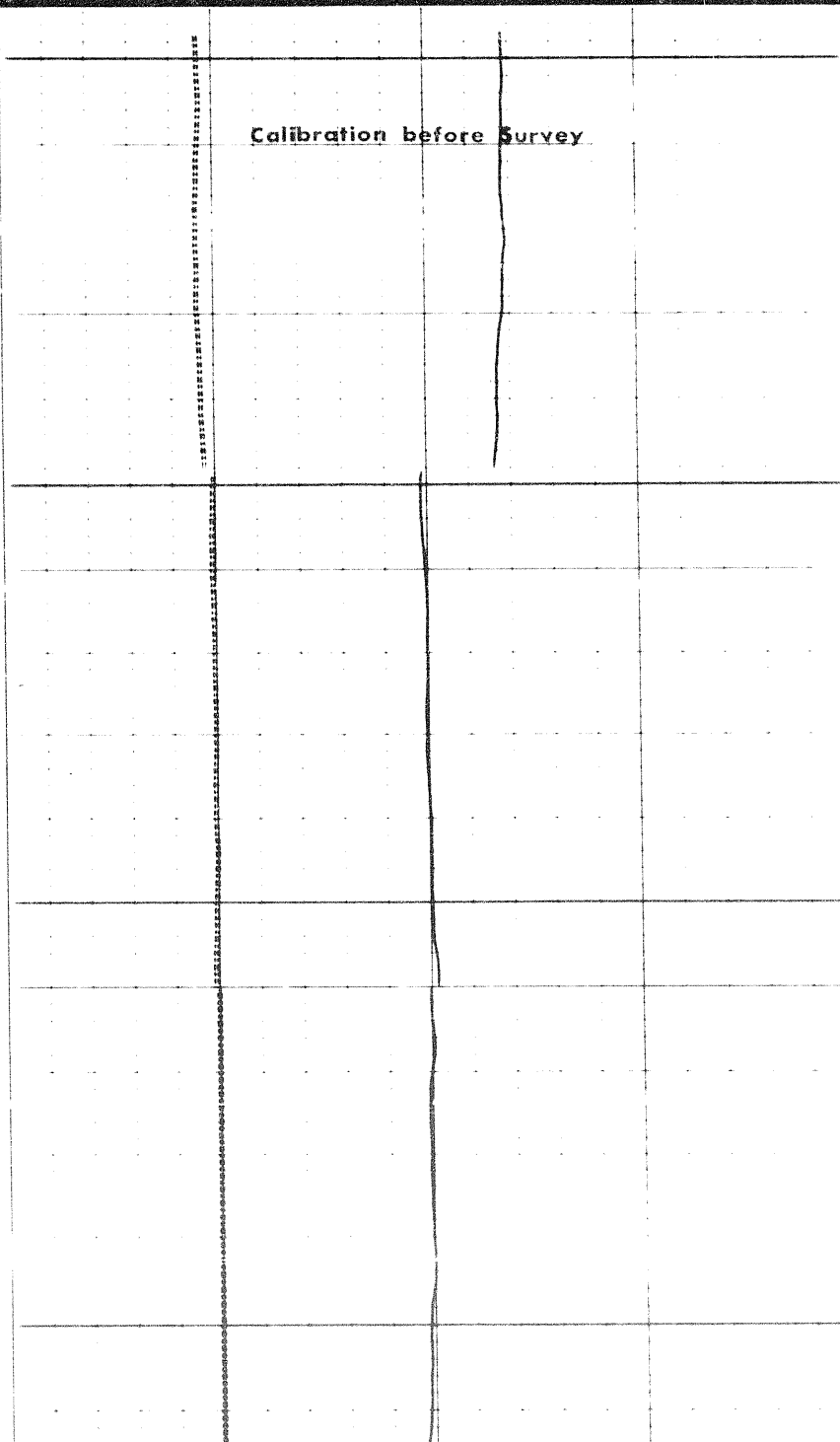
GAMMA RAY
API UNITS

DEPTHS

BULK DENSITY
 ρ_b - gm/cc

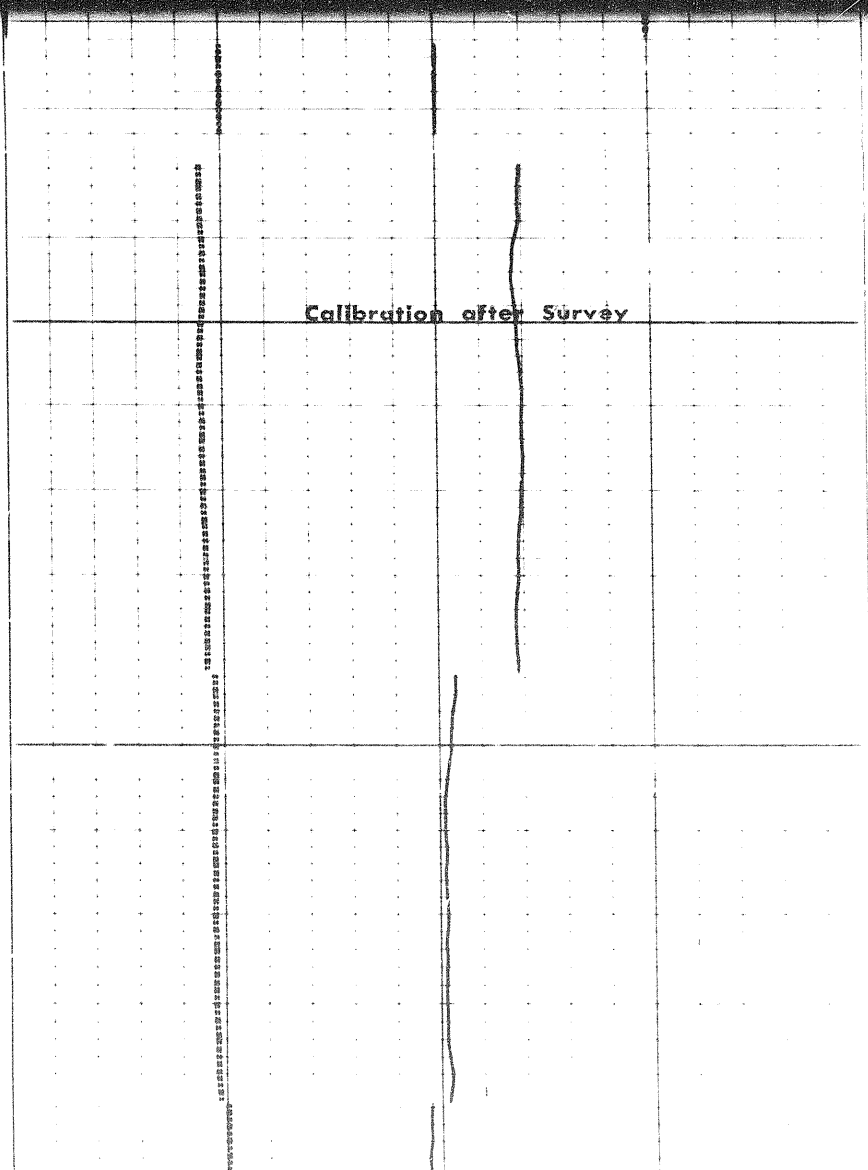
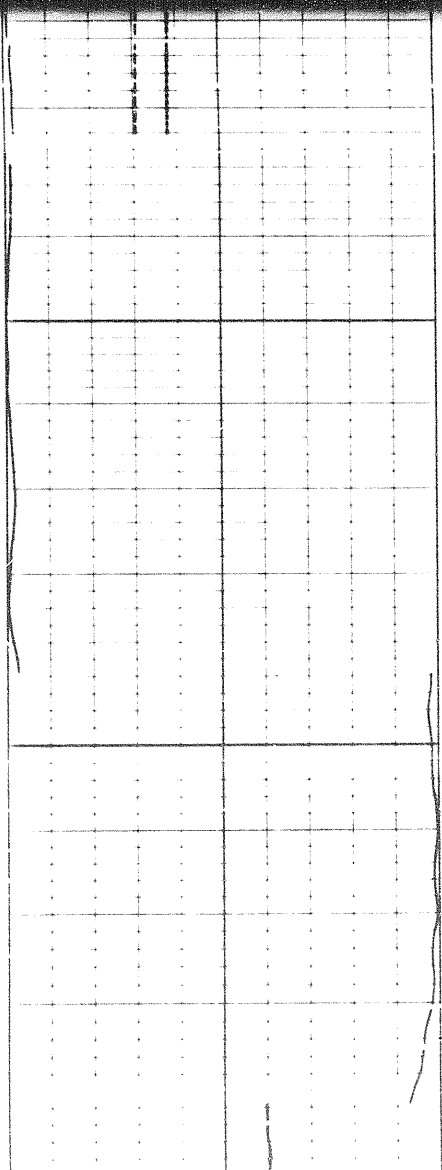
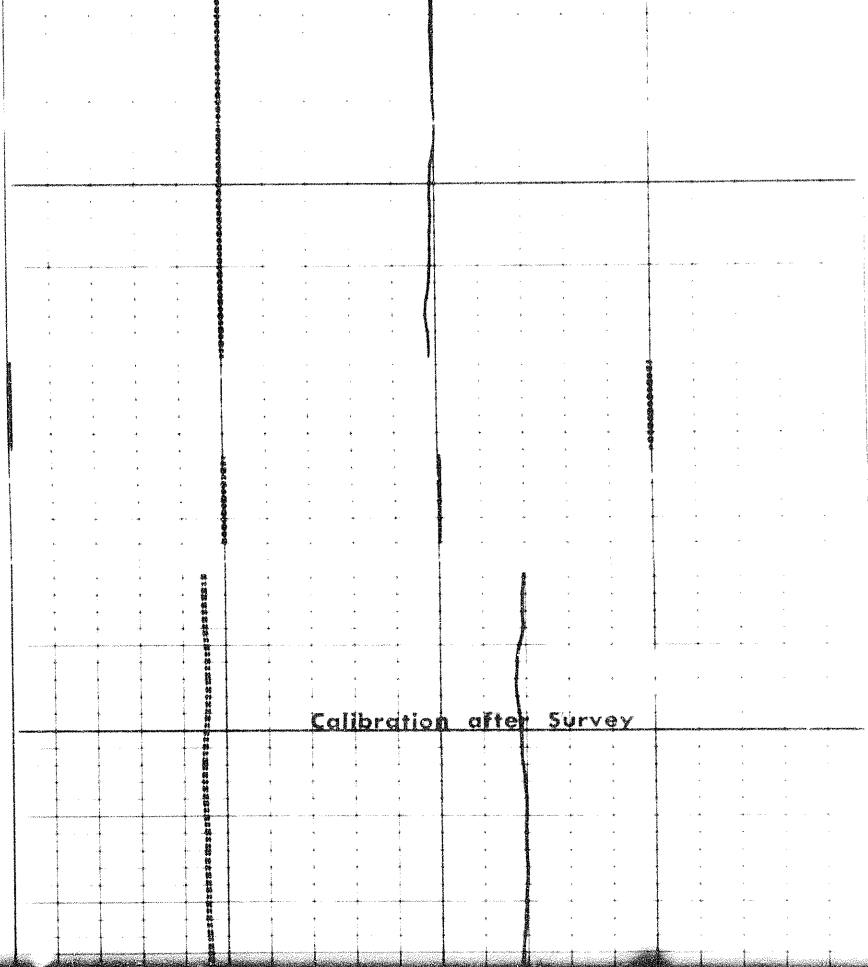
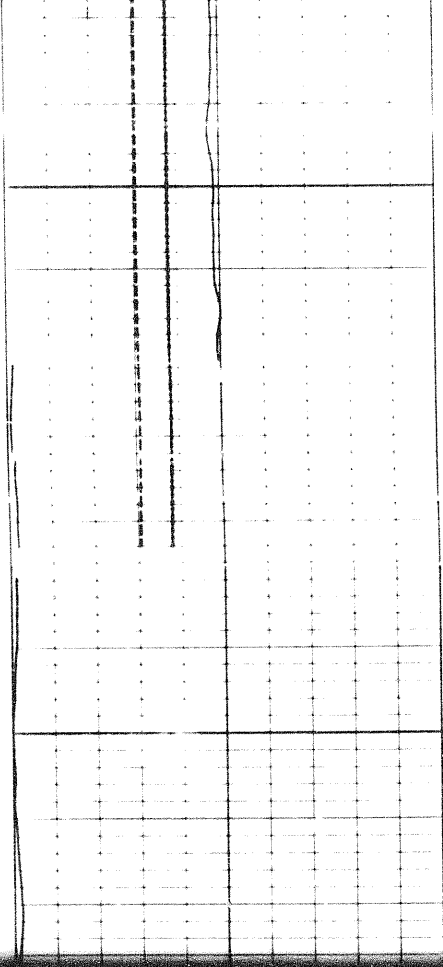


0.100

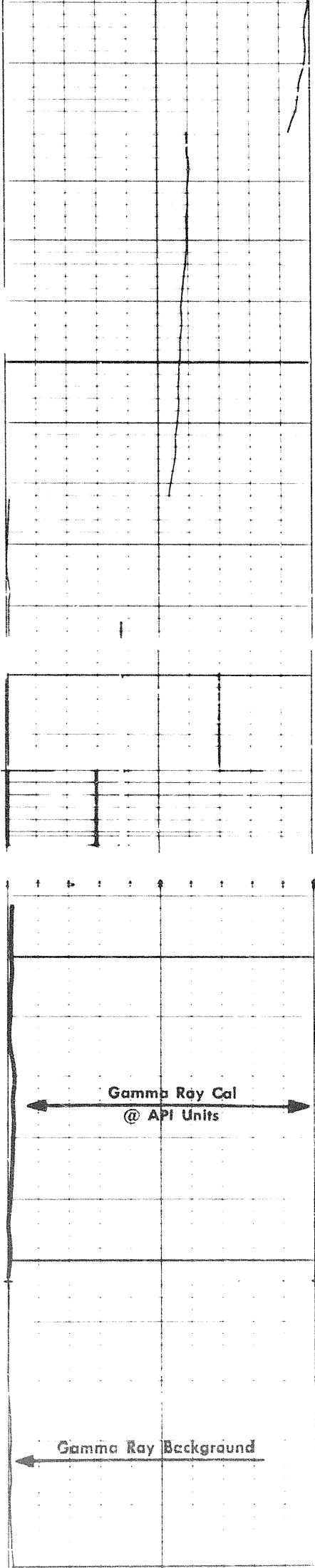


Calibration before Survey

1108

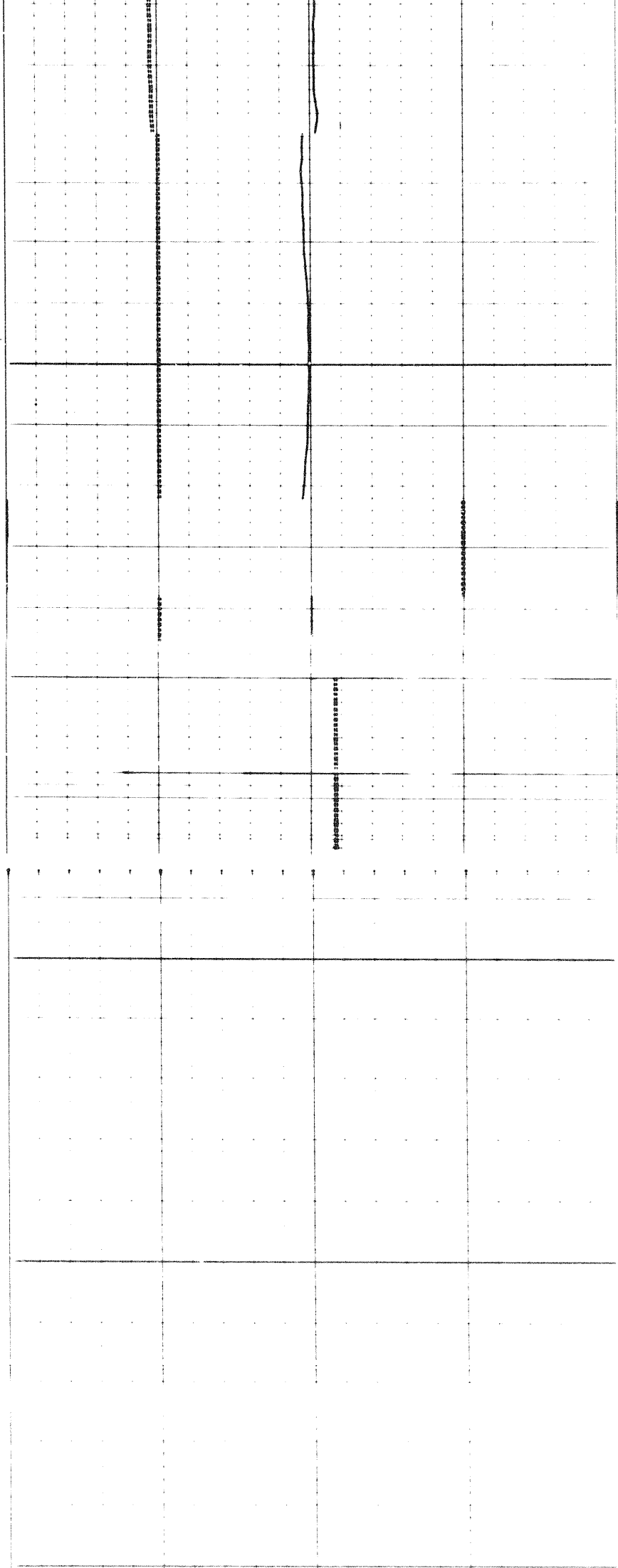


0000



0000

0066



Gamma Ray Cal
@ API Units

Gamma Ray Background

Gamma Ray Background

Gamma Ray Cal

@ API Units

Gamma Ray Background

0066

Gamma Ray Cal
@ API Units

Gamma Ray Background

Gamma Ray Cal
@ API Units

Gamma Ray Background

066

COMPANY

Schlumberger