

Schlumberger

**DUAL INDUCTION-LATEROLOG**  
SCHLUMBERGER OF CANADA  
Calgary, Alberta

PROVINCE YUKON TERRITORY  
FIELD WILDCAT  
WELL MURPHY MESA BP S WHITESTONE  
YT N-58  
COMPANY MURPHY OIL COMPANY LTD.

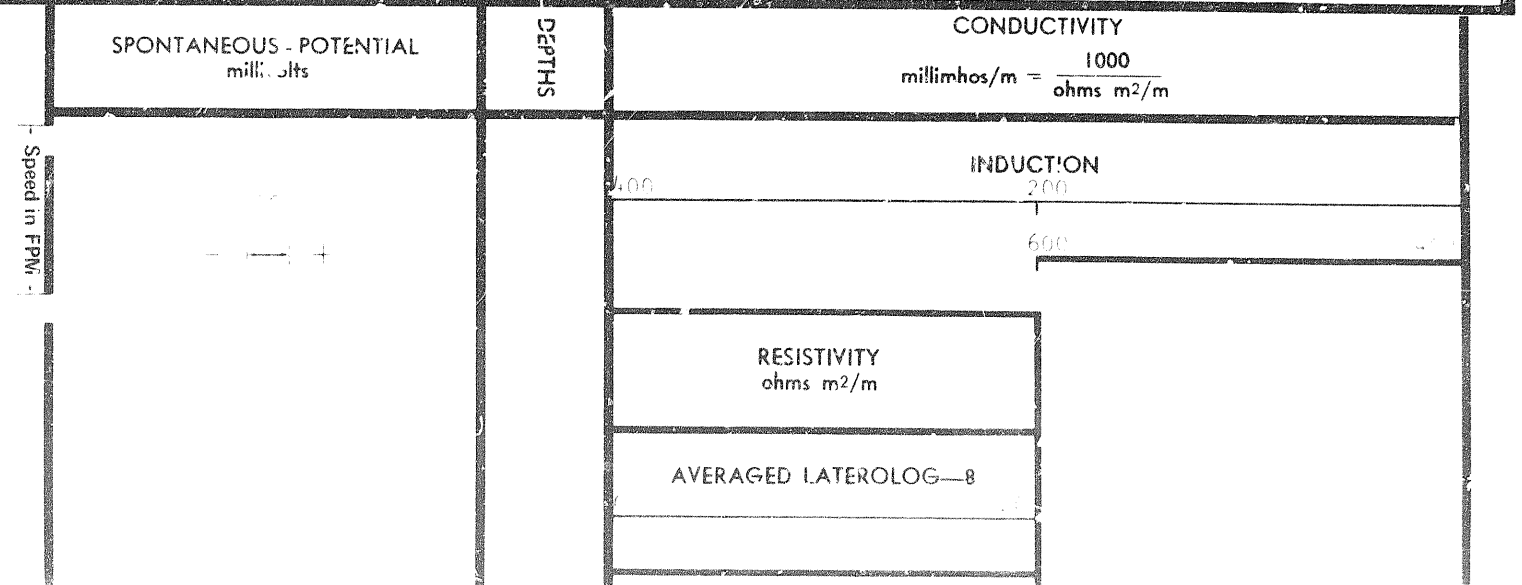
COMPANY MURPHY OIL COMPANY LTD.  
WELL MURPHY MESA BP S WHITESTONE YT  
FIELD WILDCAT  
PROVINCE YUKON TERRITORY  
LOCATION 65° 17' 50" N LAT  
158° 25' 30" W LONG  
Permanent Datum 56 Elev. 2907  
Log Measured from KB Ft. Above Perm. Datum  
Other Services  
SLO 11, 100-50  
ELEV. KB 2918  
GL 2917  
CBF

Date	19 APR 73
Run No.	ONE
First Reading	6950
Last Reading	955
Feet Measured	5995
Depth Reached	6956
Bottom Driller	6993
Csg. SOC	955
Csg. Driller	957
Mud Nature	CHEM. GEL
Dens. Visc.	9.0 205
Mud pH	9.0
Water loss	5.2
Res. @	RMS @ 60% of
Rmf @	5.26 @ 62% of
@ BHT	2.43 @ 63% of
Source of Sample	FLOWLINE
Bit Size	8 3/4"
Oper. Rig Time	4 HRS
Truck No.	OSU-C 108 FRONT
Recorded By	WILLIGER
Witness	CLARK

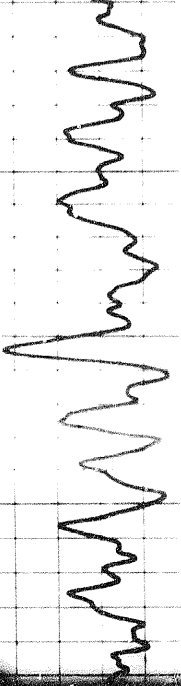
REMARKS  
Drilling Stopped 1330 120 Circulation Stopped 0400 120 Tool on Bottom 1130 120  
1st Run Service Order #: 12427  
B.H.T. 216-20 of

Stand Off = 1.00 Inches  
Cartridge No. 210  
Panel No. 210  
Sonde No. 210  
MMP No. 210  
SBR 210  
LOG NOT TAPED  
MID SAMPLES: Rm#1 = 4.01 60°F  
Rm#2 = 4.11 57°F  
Rm#3 = 4.09 60°F

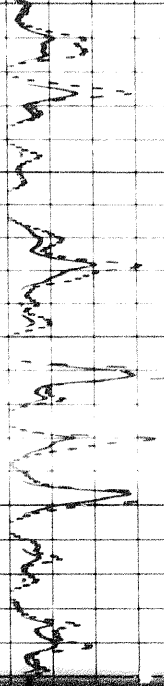
Check one, filling in blanks where applicable.  
 Surface determined sonde errors used for ILM and ILD.  
 ILM and ILD sonde errors corrected for \_\_\_\_\_ inch  
borehole signal at Rm = \_\_\_\_\_  
 ILM and ILD zeros set in hole at depth of \_\_\_\_\_ feet



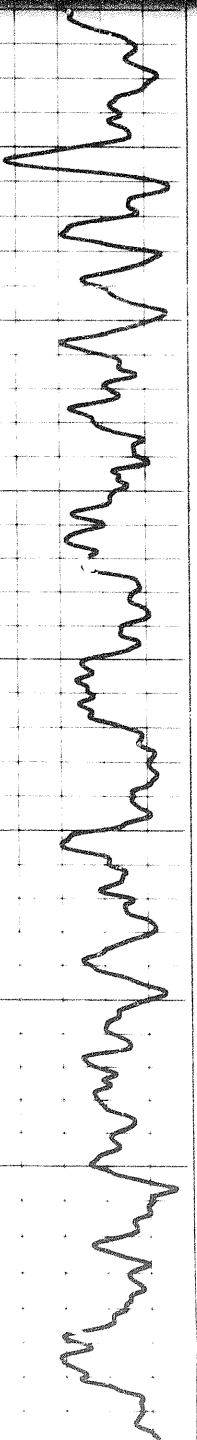
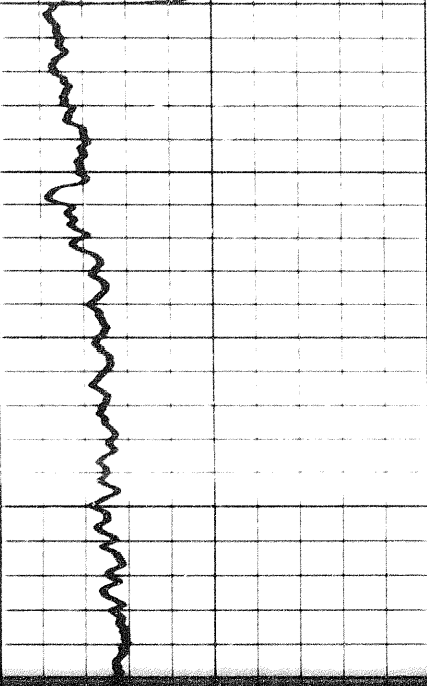




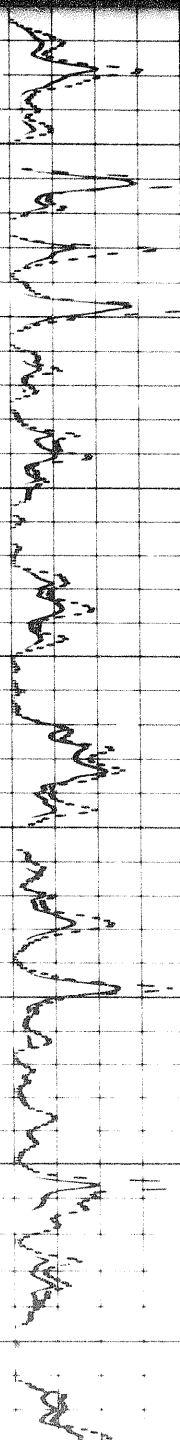
A I A II A III  
A V<sub>1</sub> A V<sub>2</sub> A V<sub>3</sub>  
A V<sub>4</sub> A V<sub>5</sub> A V<sub>6</sub>



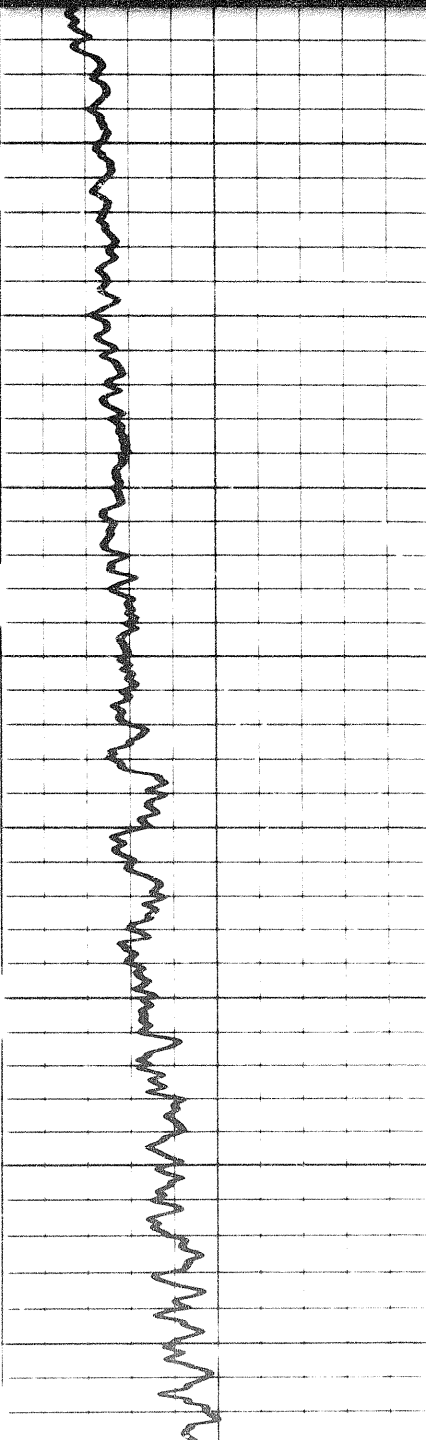
00 1200 13



A I A II A III  
A V<sub>1</sub> A V<sub>2</sub> A V<sub>3</sub>  
A V<sub>4</sub> A V<sub>5</sub> A V<sub>6</sub>

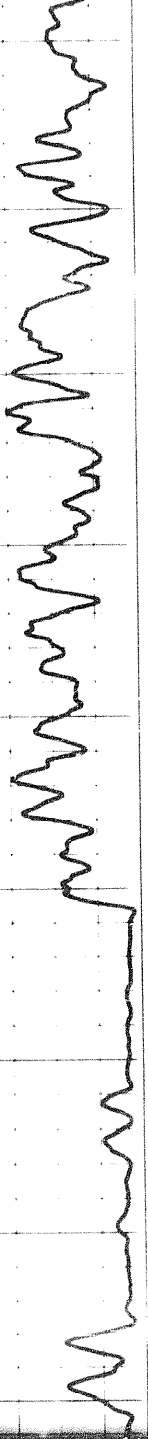


1200 1300 1400 1500









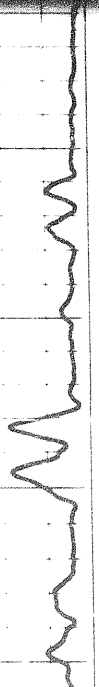
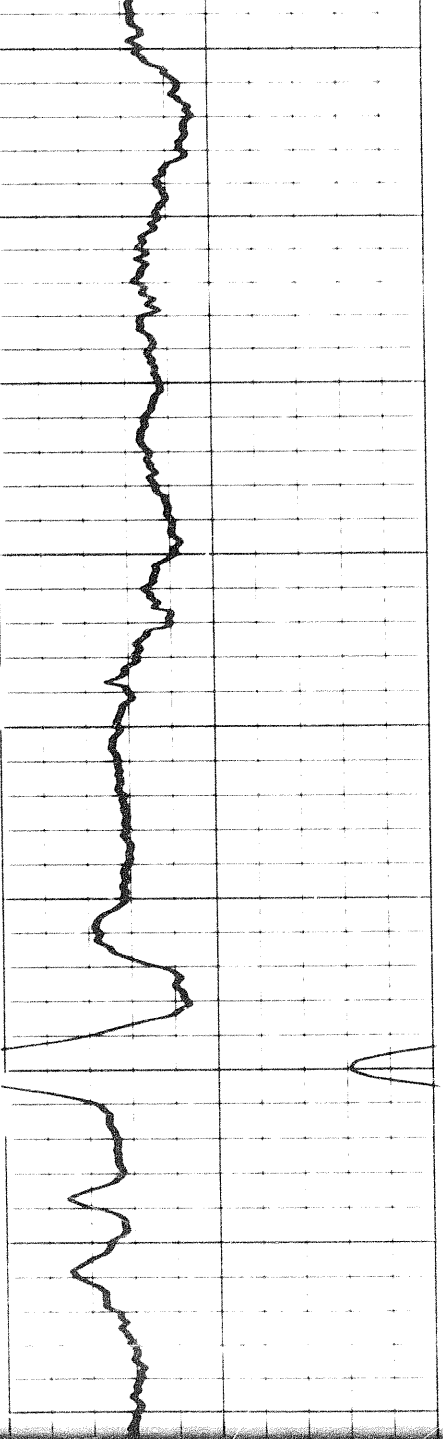
Handwritten text on the top trace, possibly indicating patient information or lead placement.

Handwritten text, possibly a lead label or measurement.

Handwritten text, possibly a lead label or measurement.

Handwritten text, possibly a lead label or measurement.

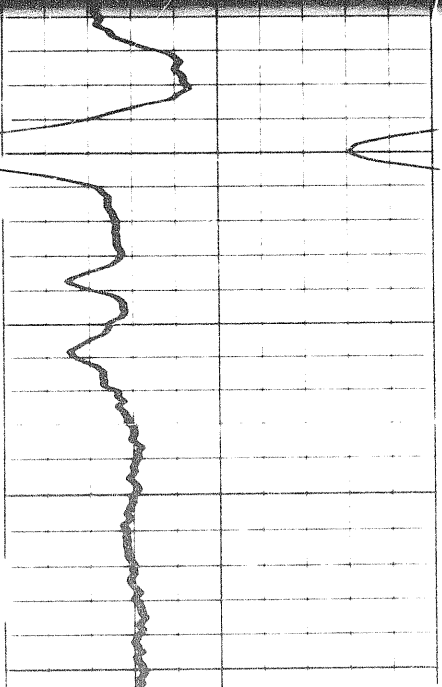
2100 2200 2300 2400 2500

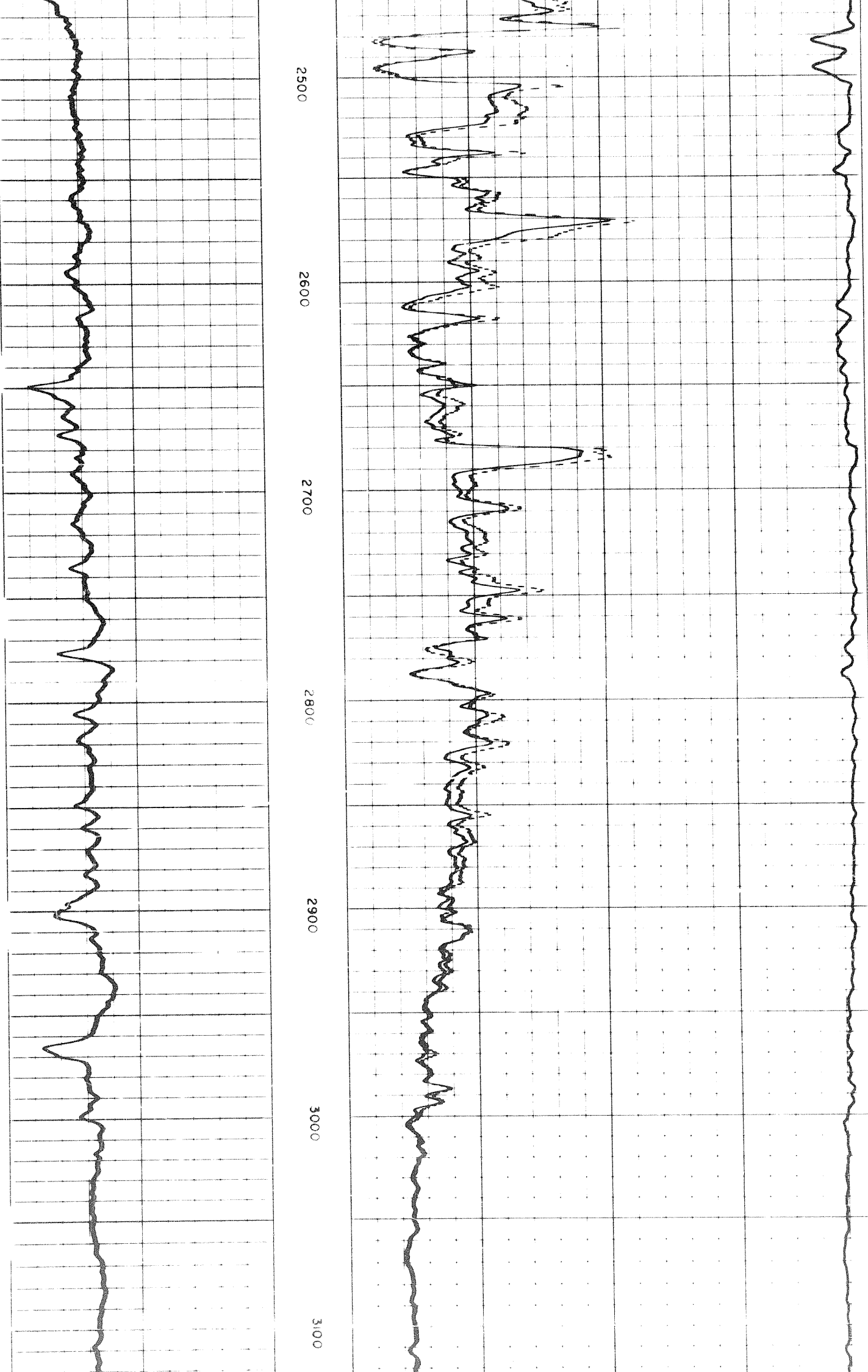


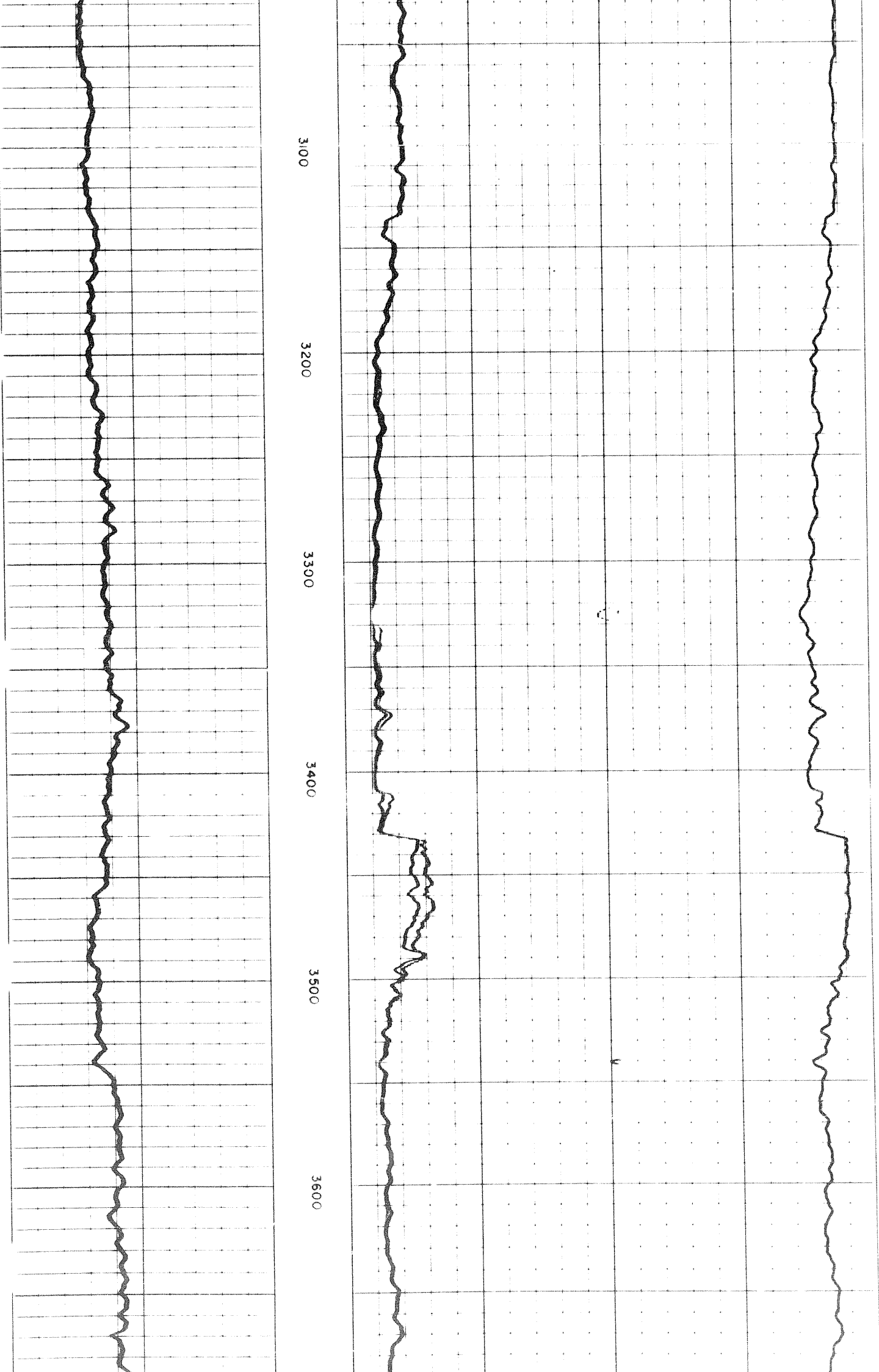
Handwritten text on the top trace of the second strip, possibly indicating patient information or lead placement.

2400 2500

Handwritten text, possibly a lead label or measurement.







3100

3200

3300

3400

3500

3600

3600

3700

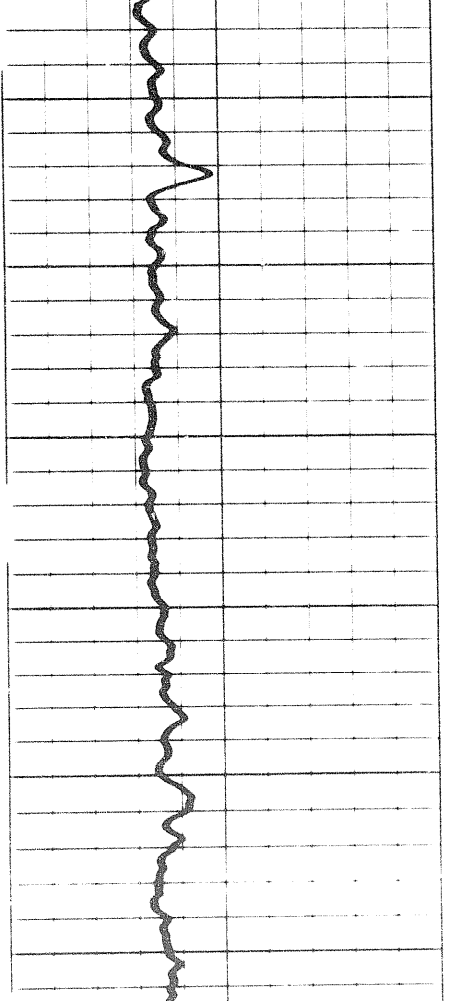
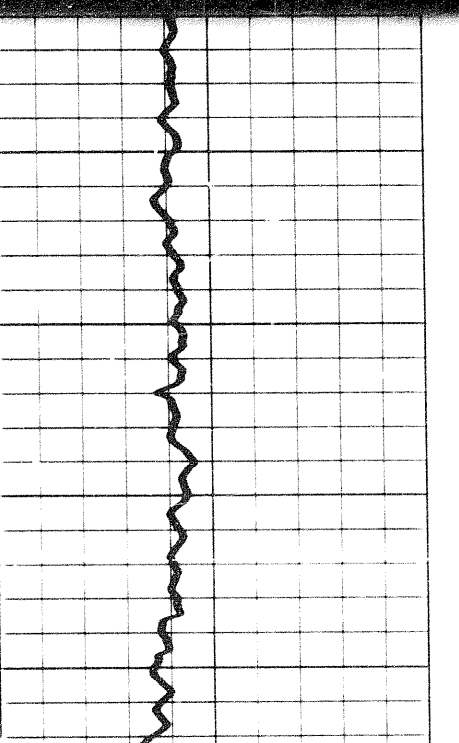
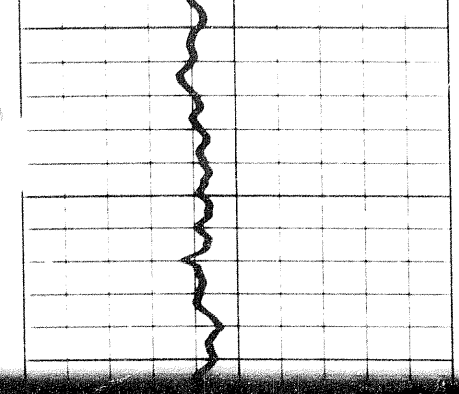
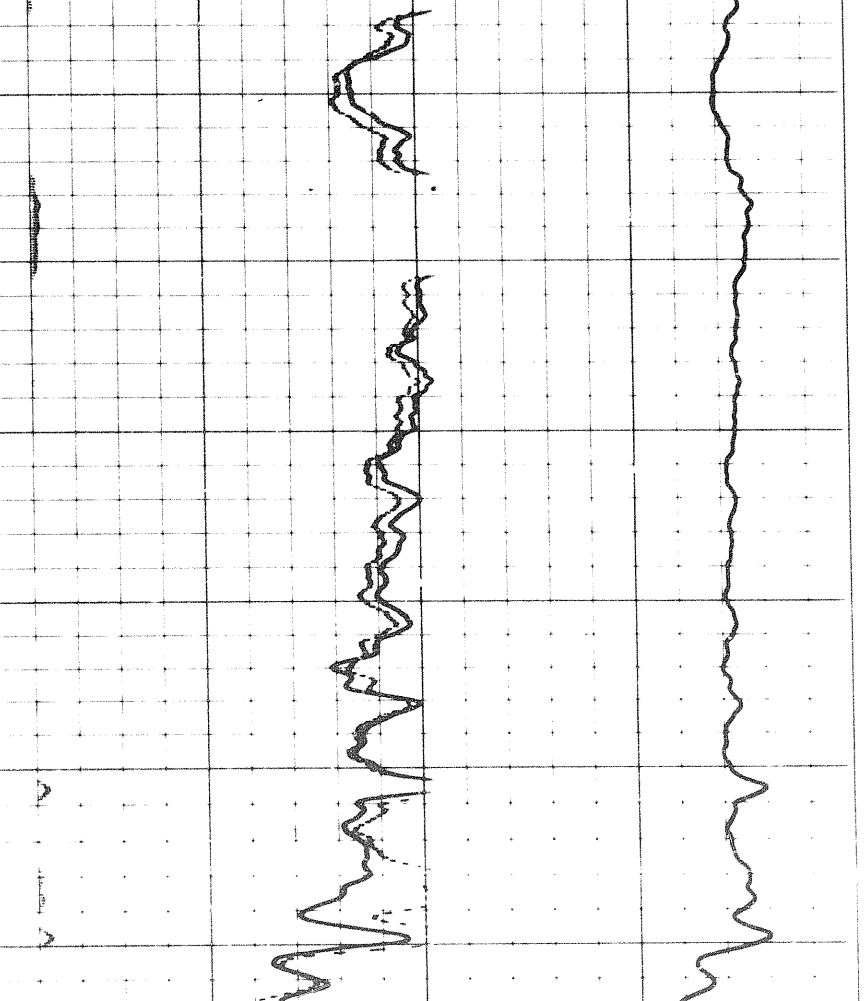
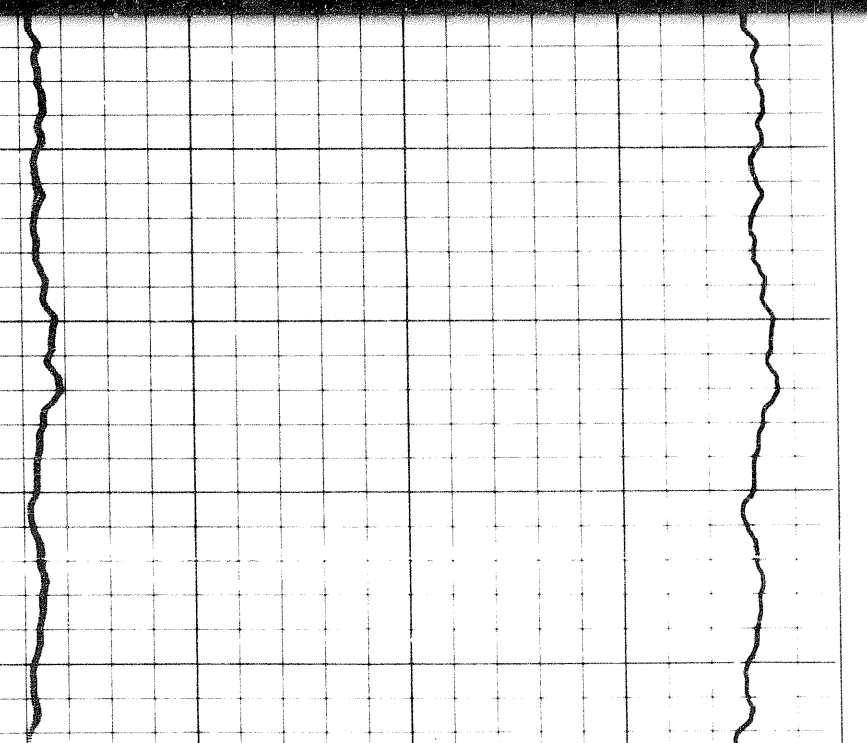
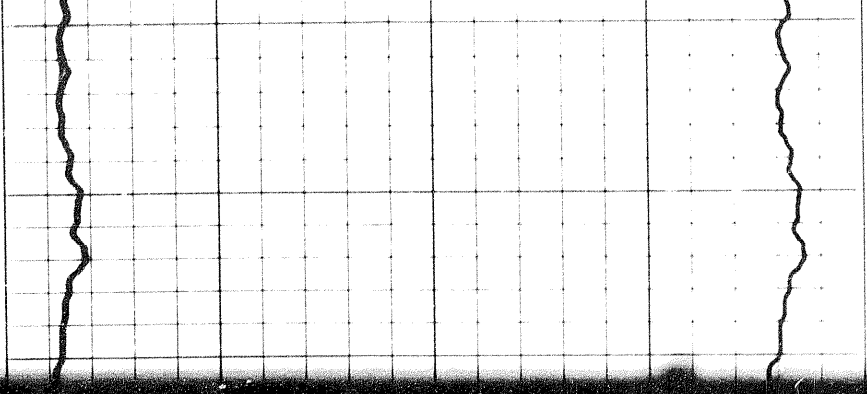
3600

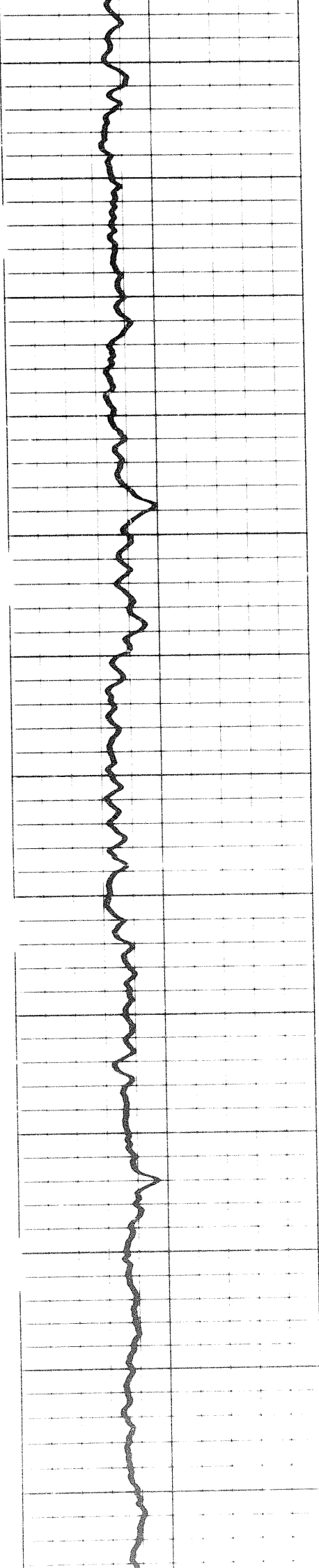
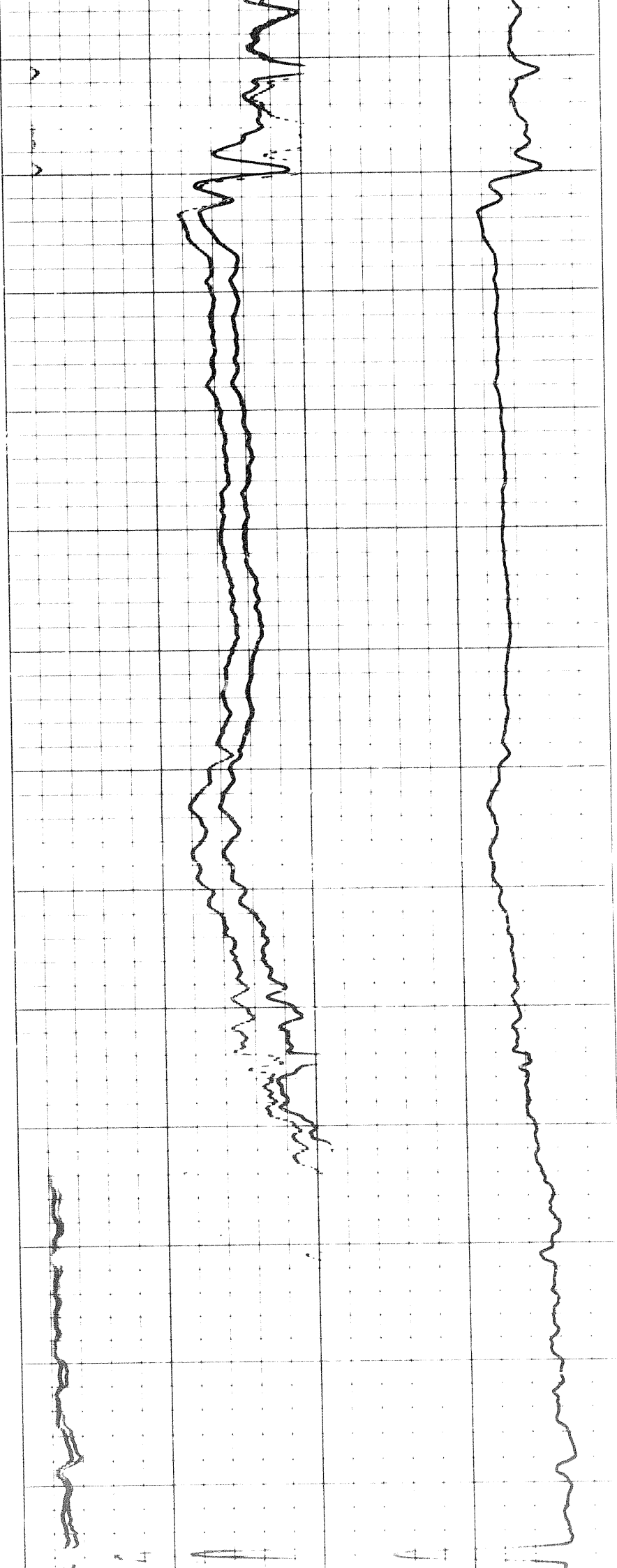
3700

3800

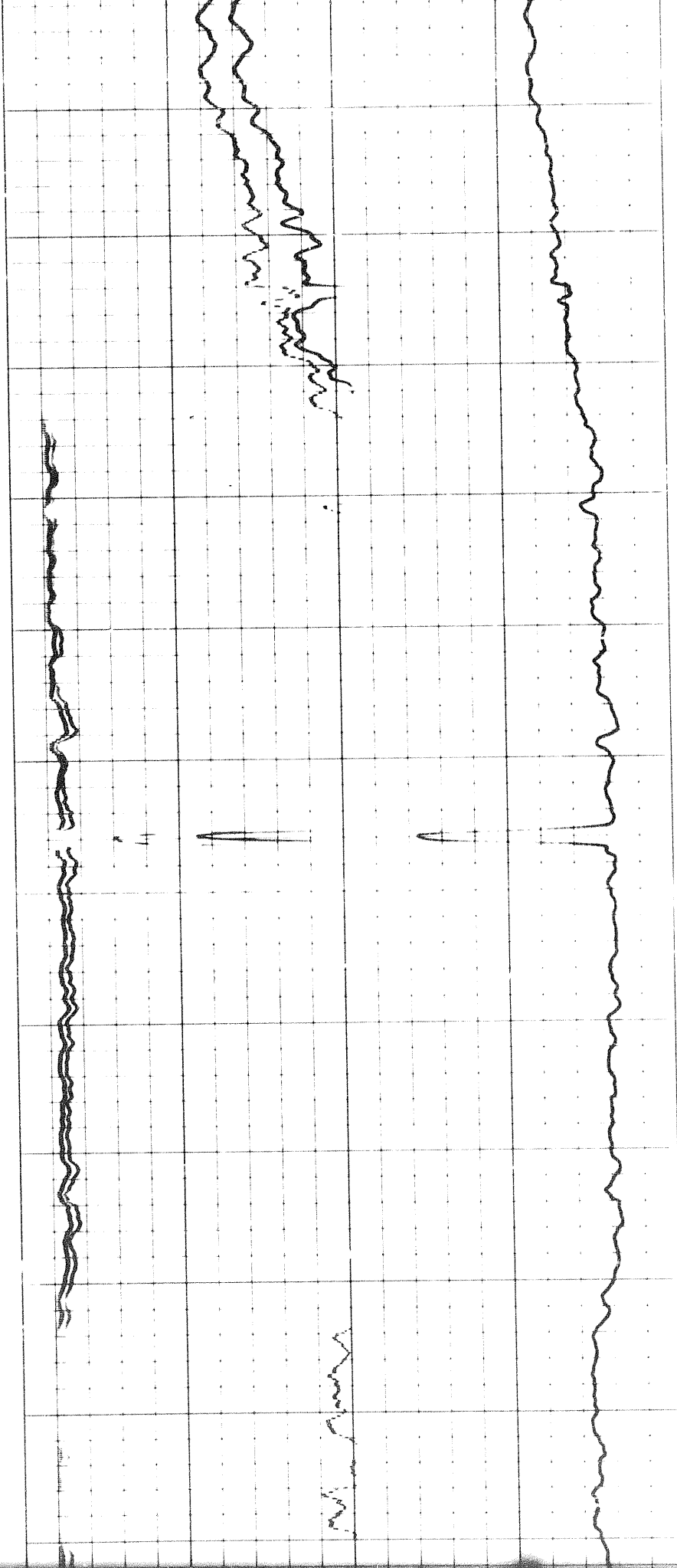
3900

4000









4400

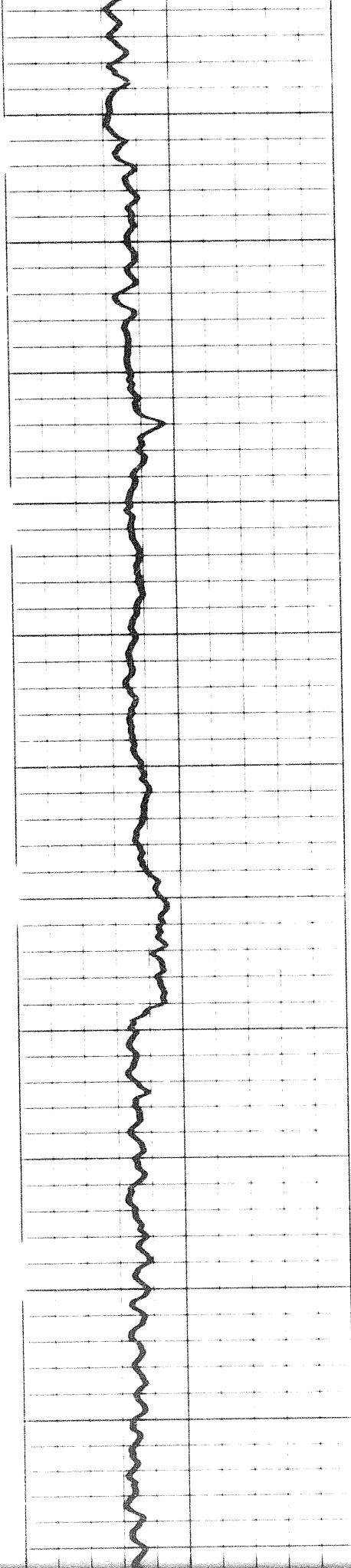
4500

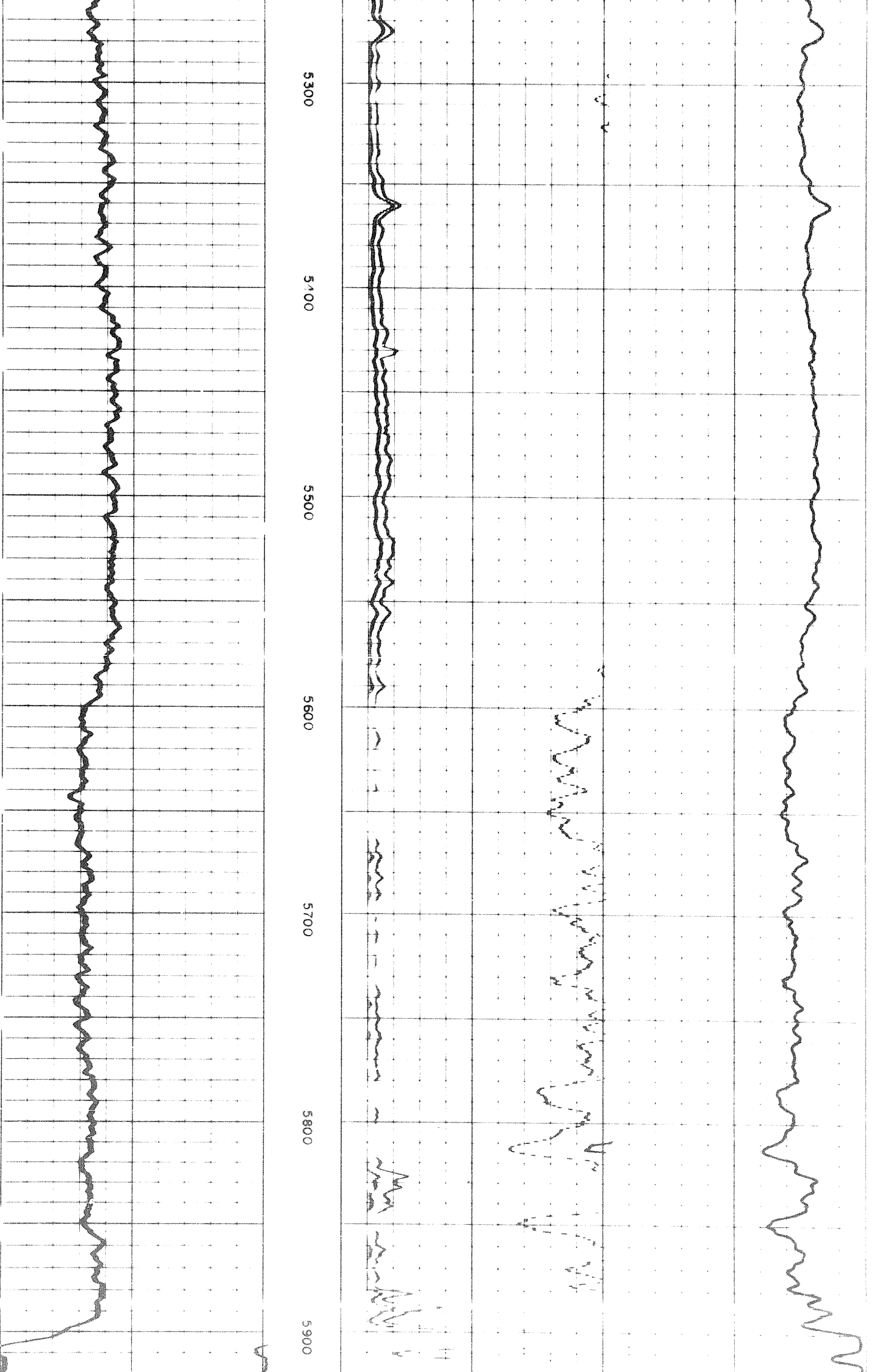
4600

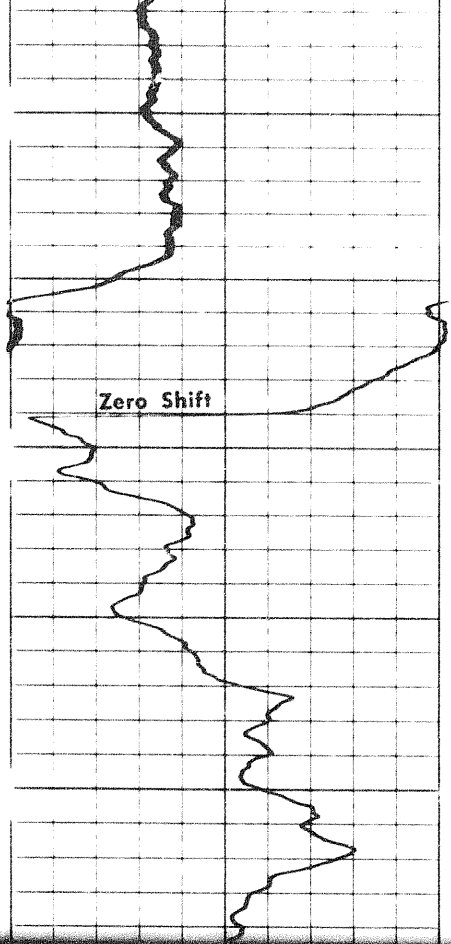
4700

4800

4900

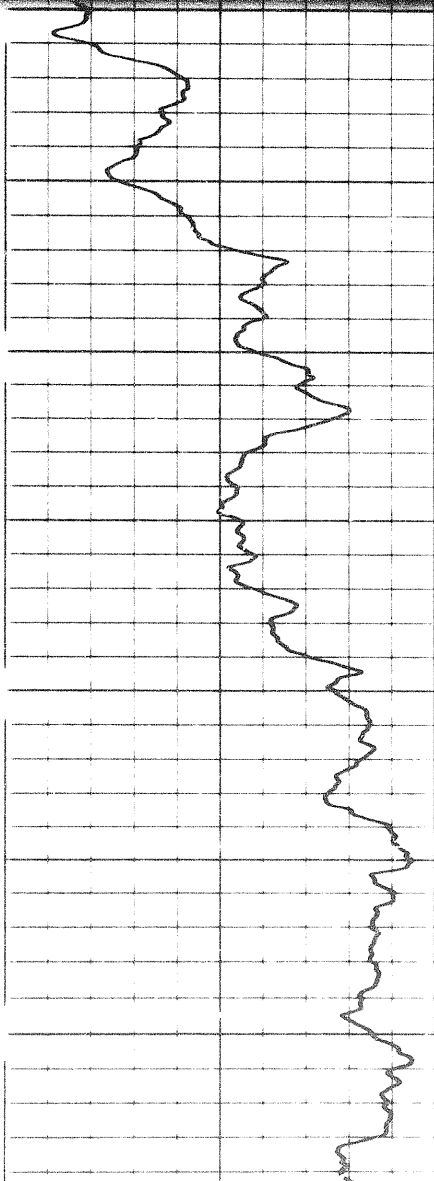
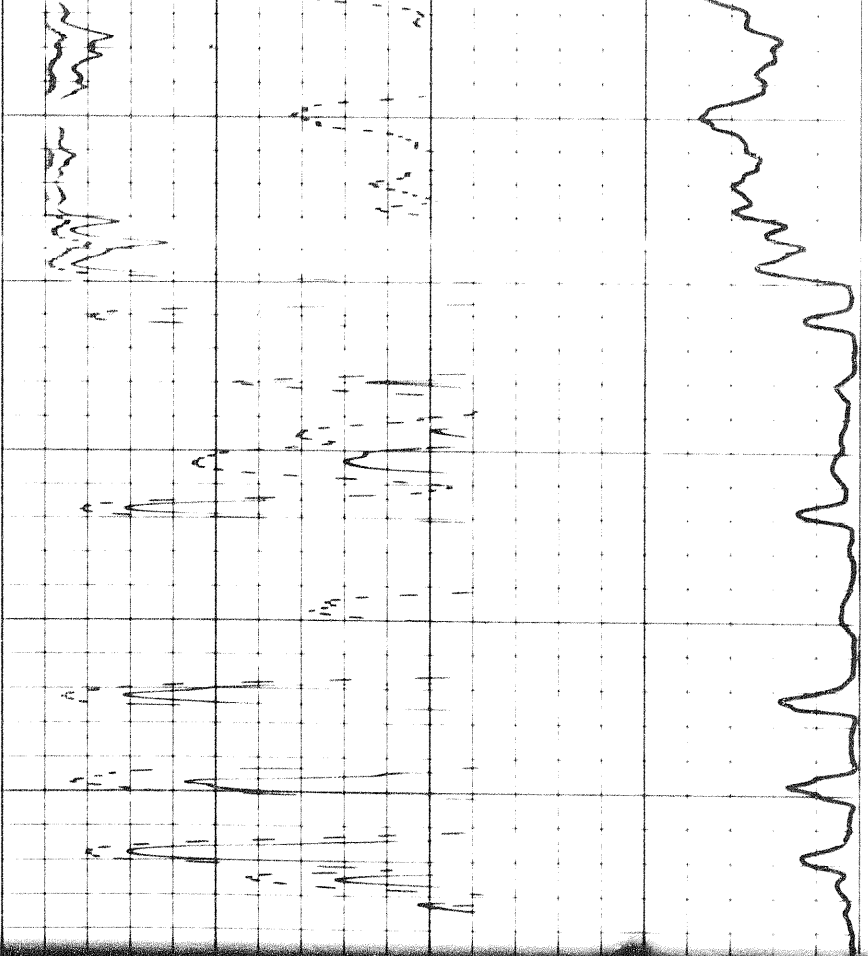






5900

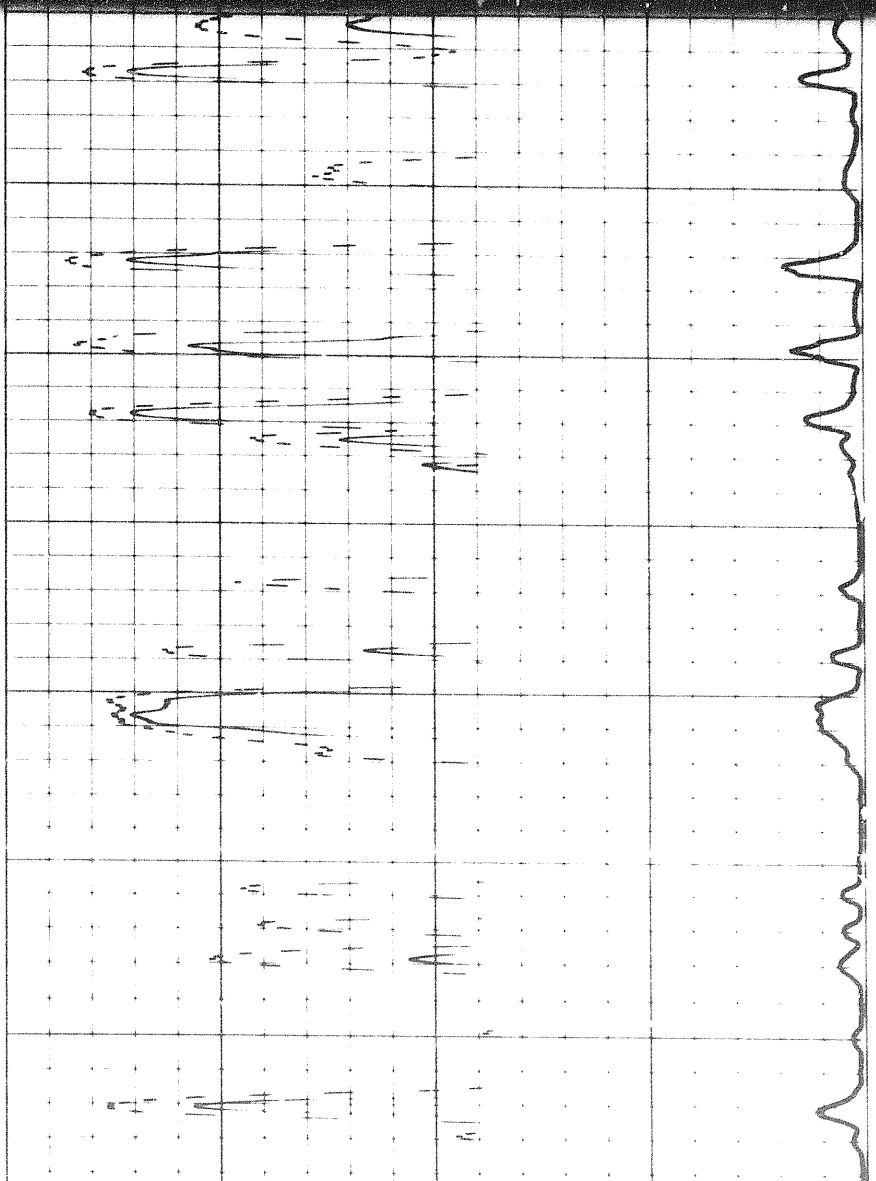
6000

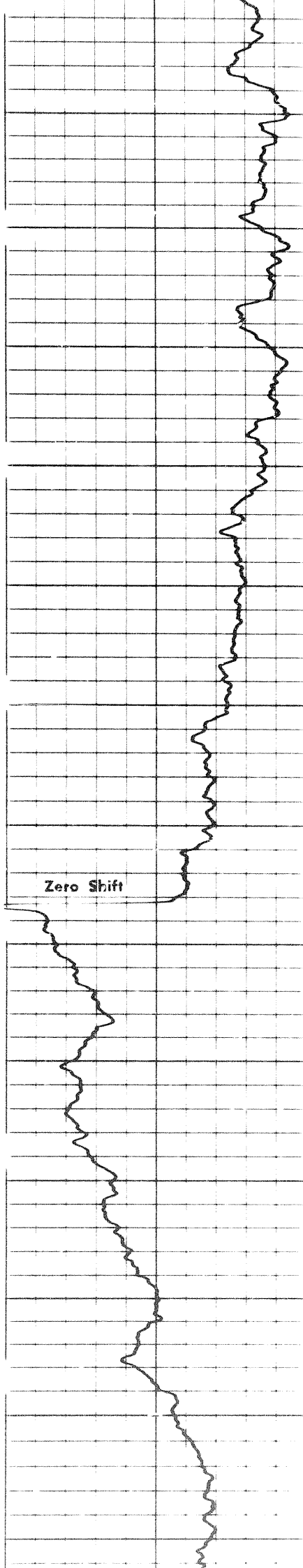


6000

6100

6200





6200

6300

6400

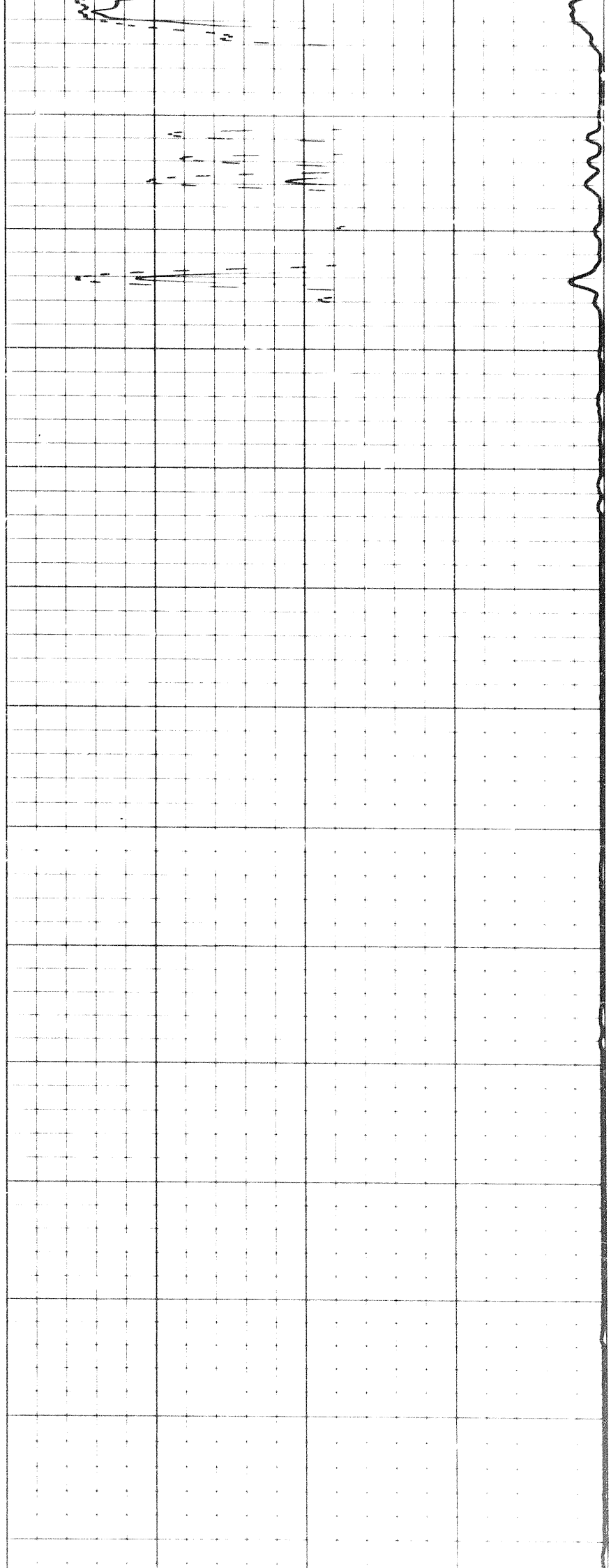
6500

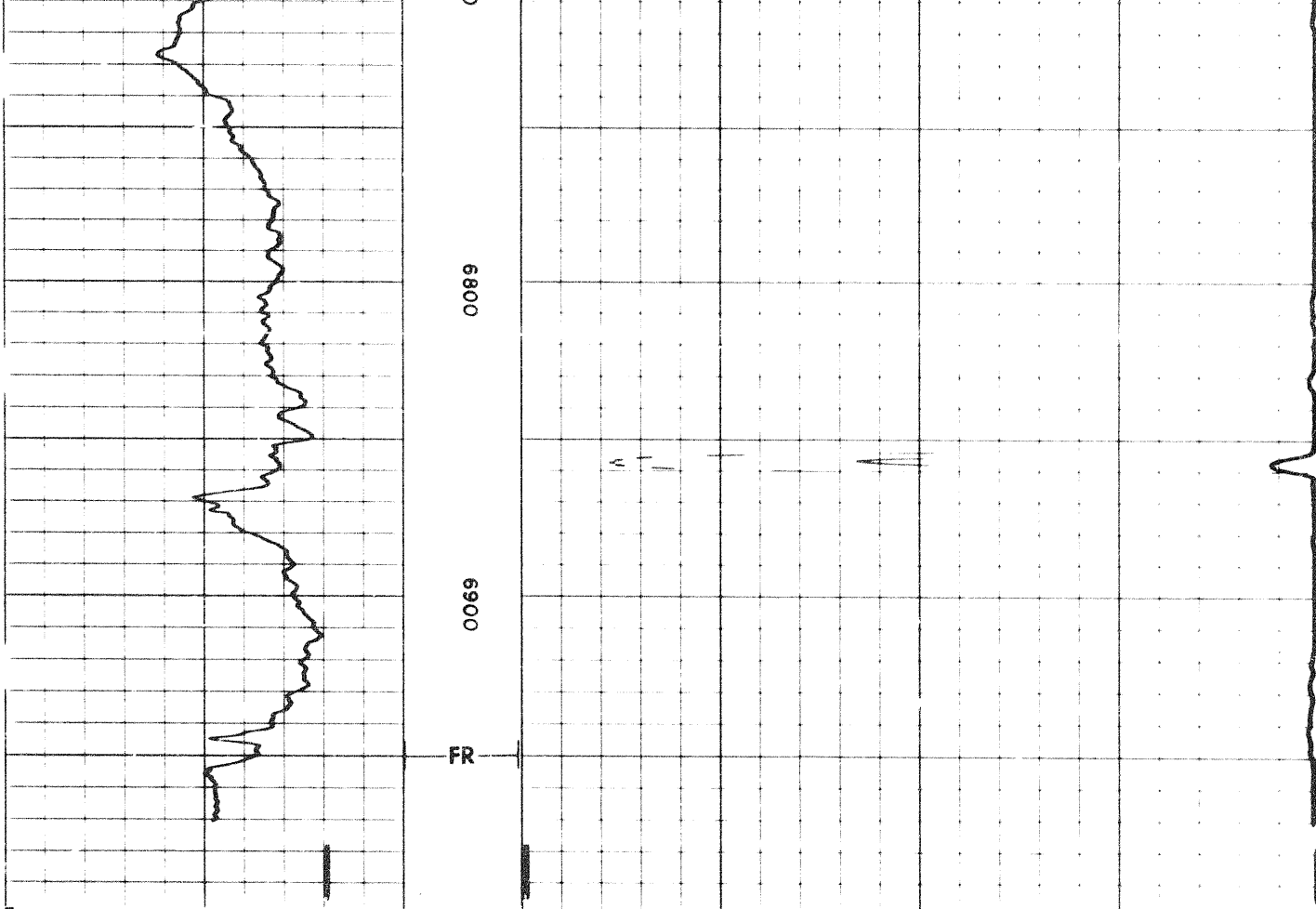
6600

6700

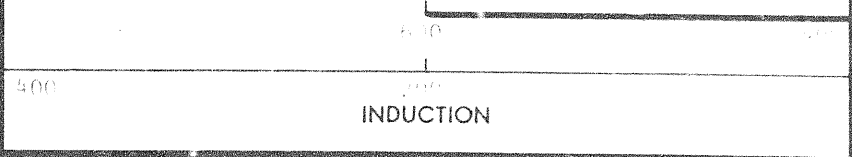
6800

Zero Shift

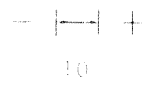




0	200
0	20
DEEP INDUCTION	
0	200
0	20
AVERAGED LATEROLOG—8	
RESISTIVITY ohms m <sup>2</sup> /m	



Speed in FPM



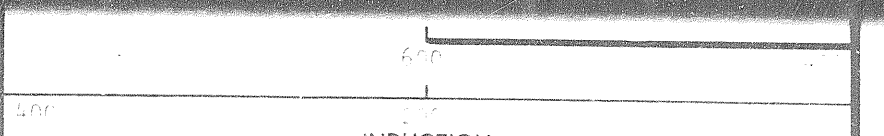
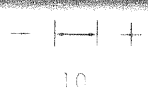
SPONTANEOUS - POTENTIAL millivolts	DEPTHS	CONDUCTIVITY mill.mhos/m = $\frac{1000}{\text{ohms m}^2/\text{m}}$
---------------------------------------	--------	---

DETAIL LOG 5" = 100

SPONTANEOUS - POTENTIAL millivolts	DEPTHS	RESISTIVITY ohms m / m
---------------------------------------	--------	---------------------------

LATEROLOG - 8

Speed in FPM





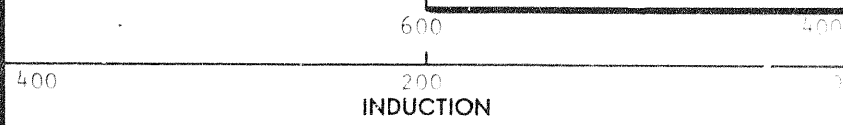
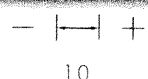
millivolts

HS

ohms m/m

LATEROLOG-8

Speed in FPM



SPONTANEOUS - POTENTIAL millivolts

DEPTHS

CONDUCTIVITY  
 $\text{millimhos/m} = \frac{1000}{\text{ohms m}^2/\text{m}}$

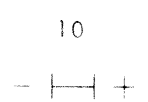
DETAIL LOG 5" = 100'

SPONTANEOUS - POTENTIAL millivolts

DEPTHS

RESISTIVITY ohms m/m

Speed in FPM



LATEROLOG-8

1 10 100 1000

MEDIUM INDUCTION LOG

1 10 100 1000

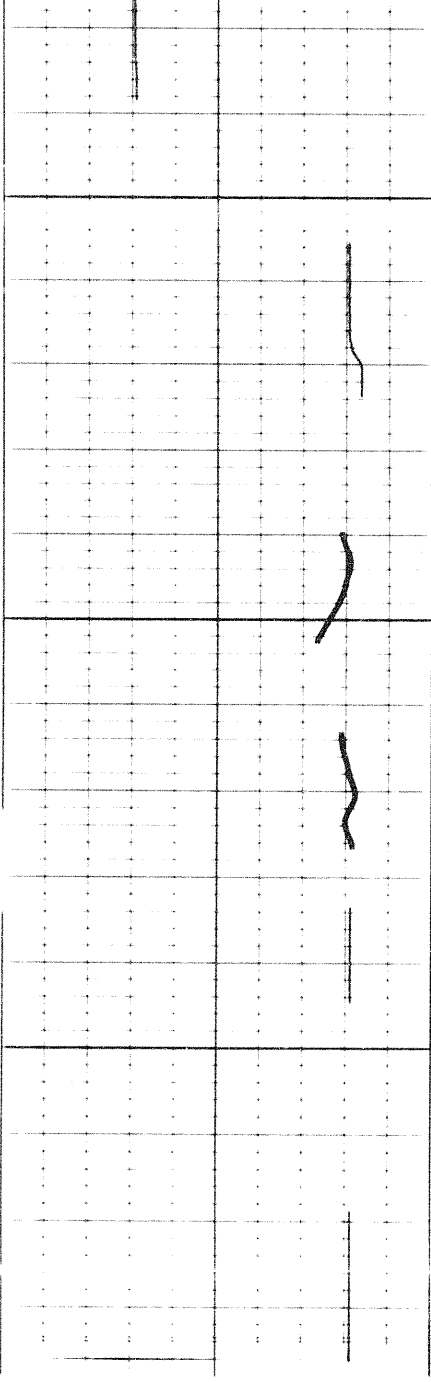
DEEP INDUCTION LOG

1 10 100 1000

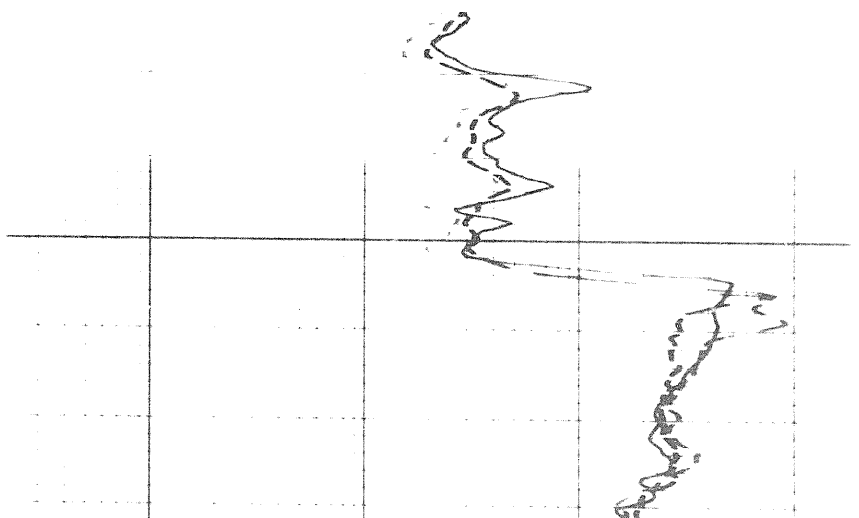
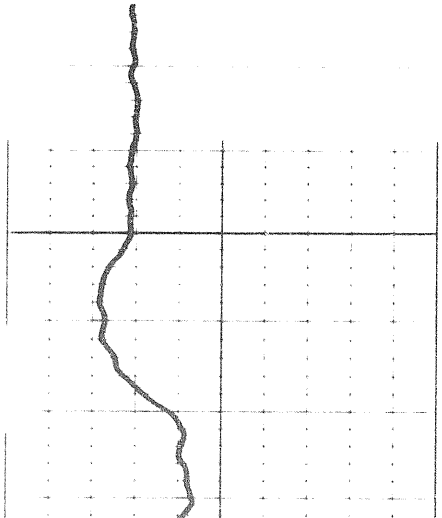
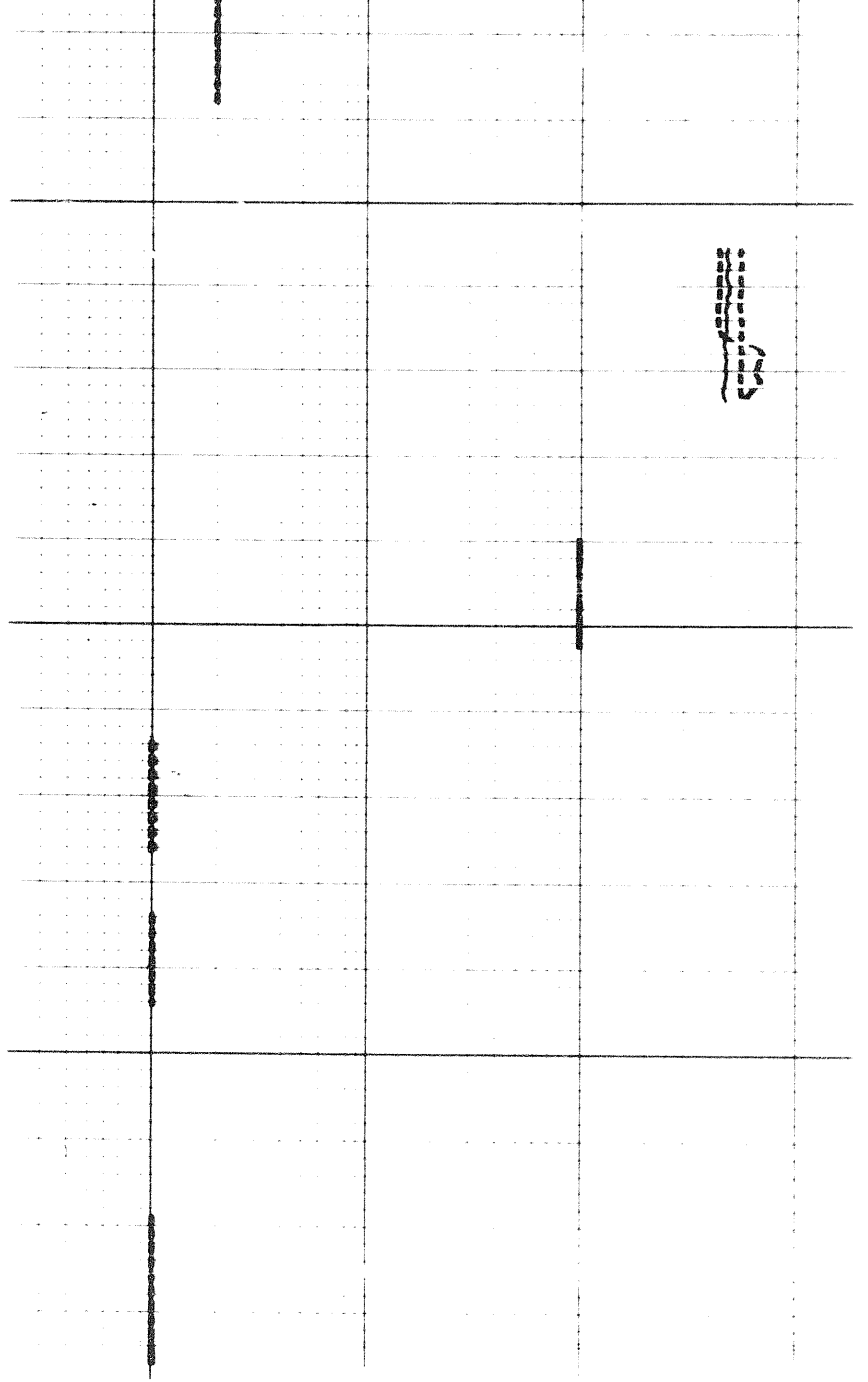
Calibration after Survey

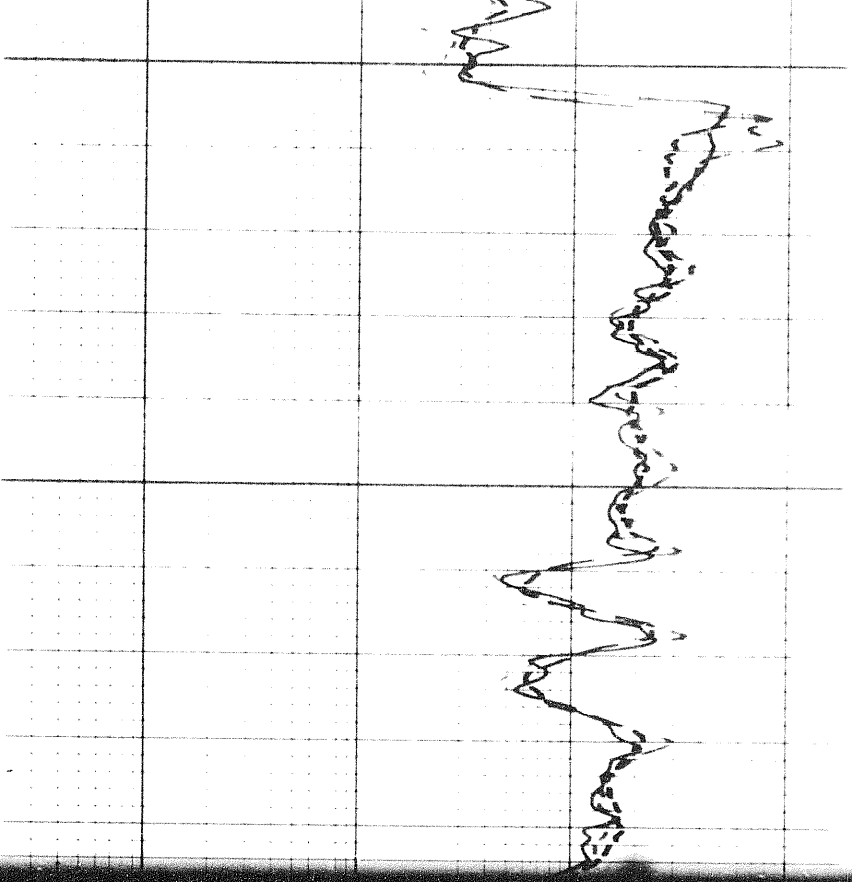
BA  
BL  
BF  
WF  
DF  
DF  
DF  
DF  
DF

0700

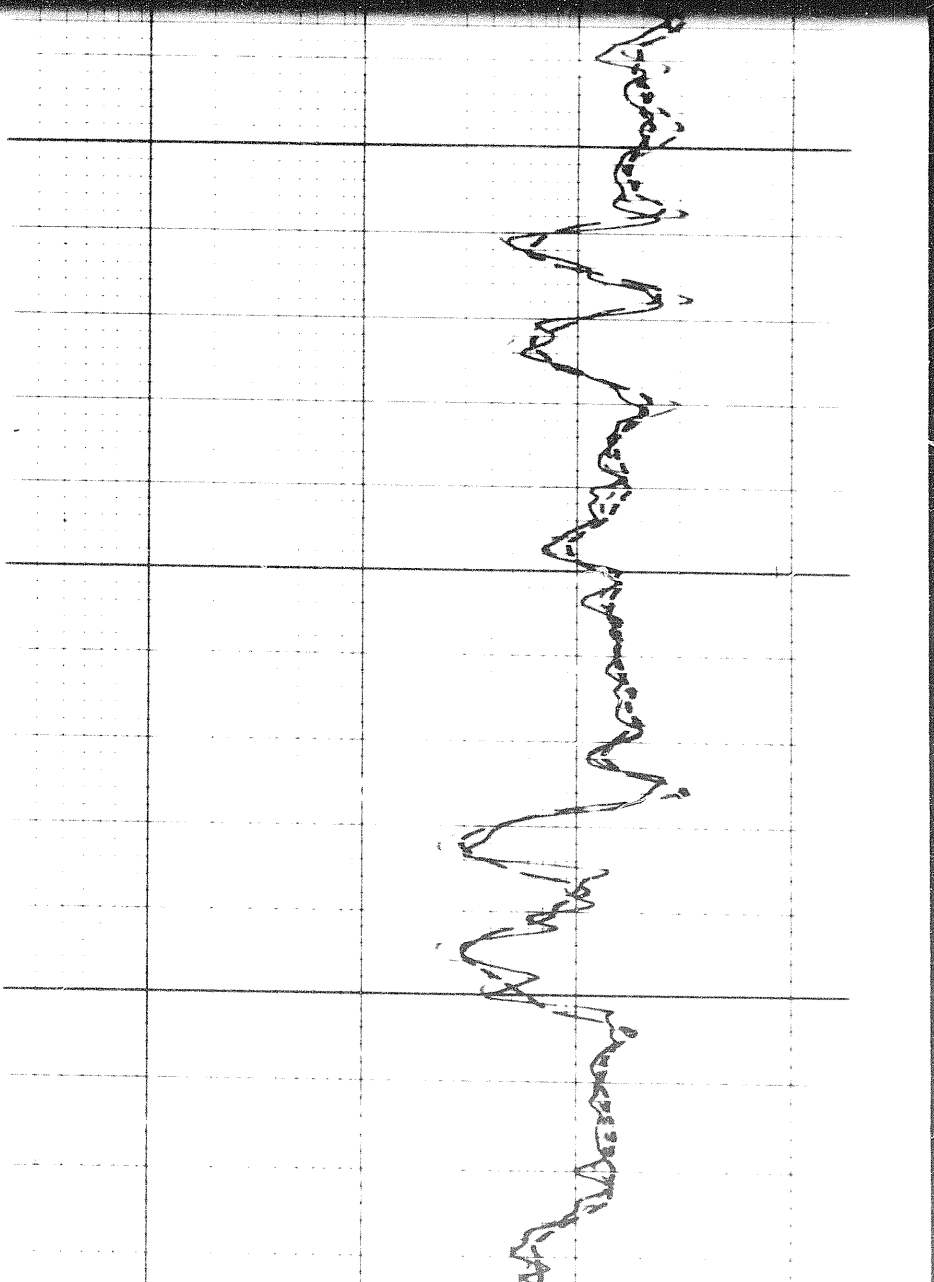
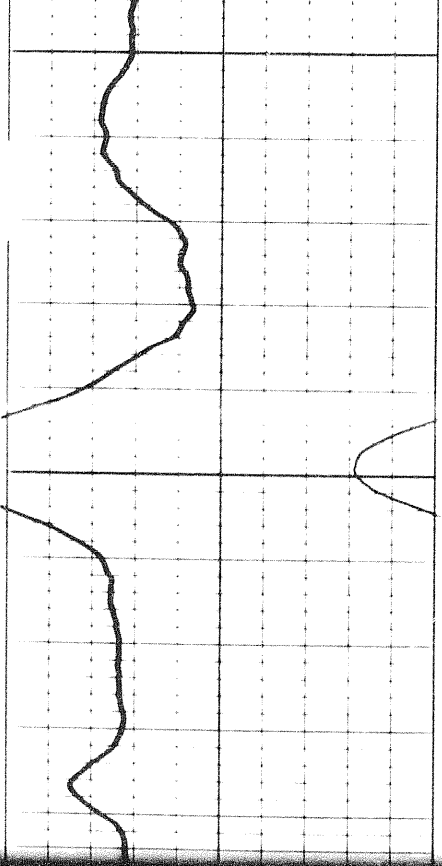


0080

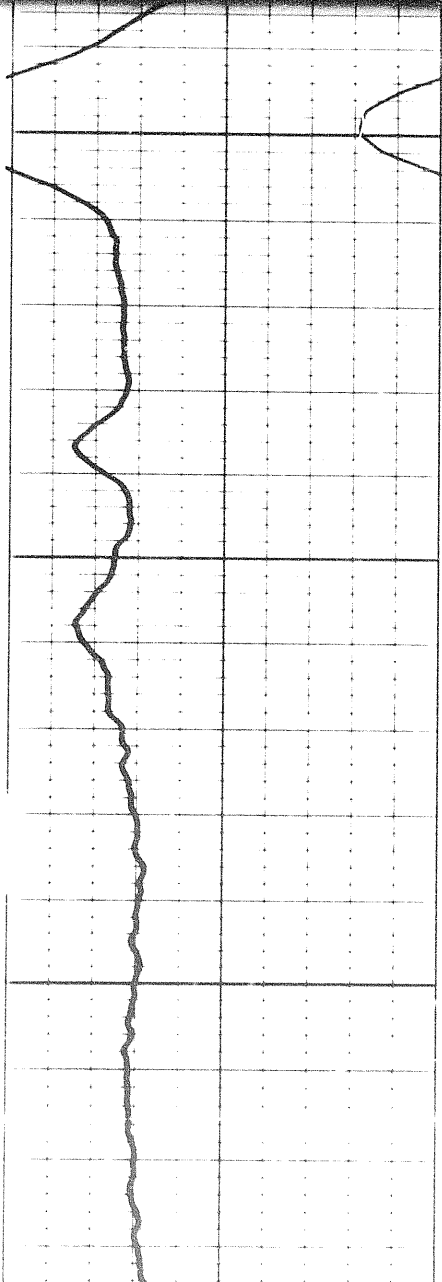




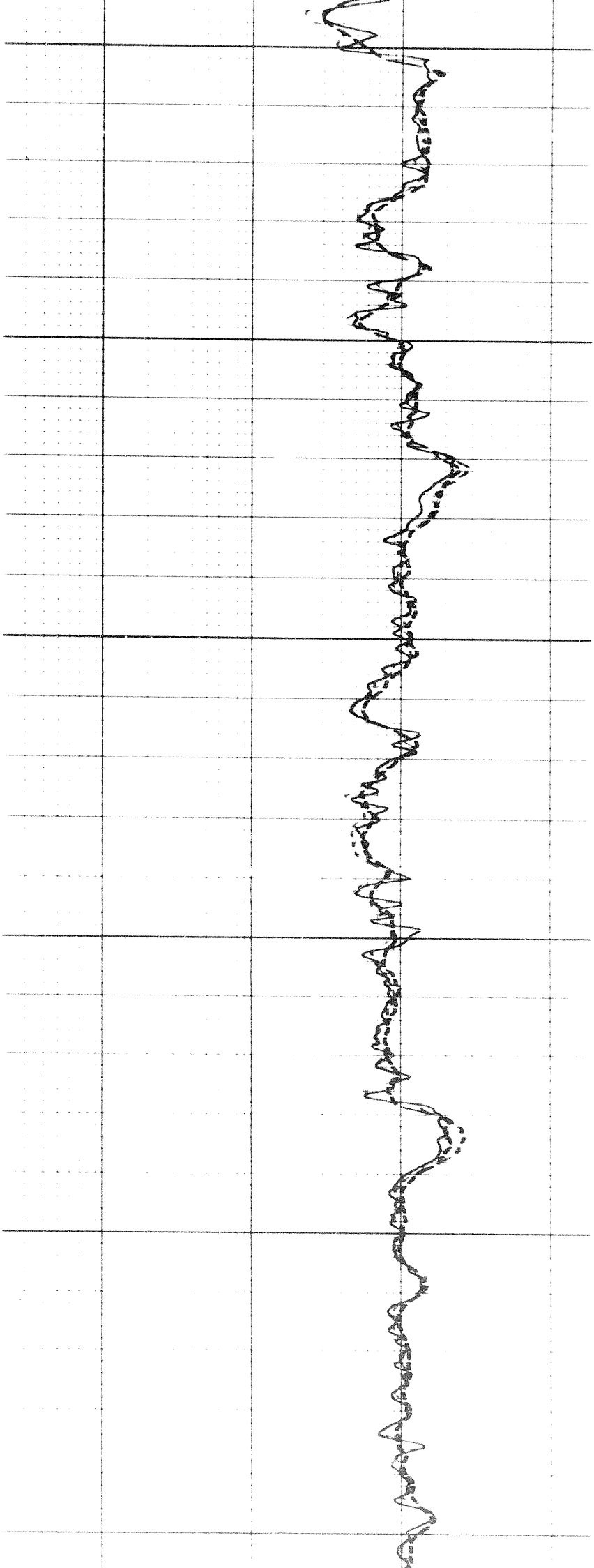
2400



2400



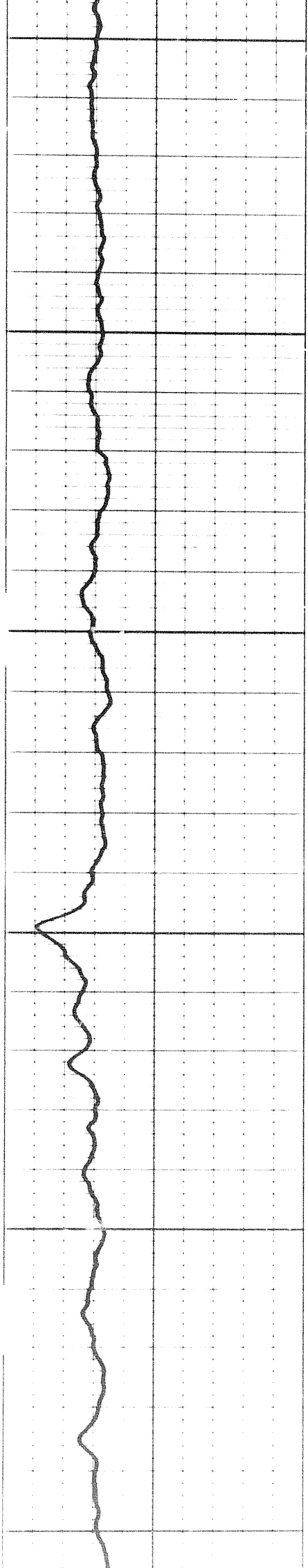
2500



2500

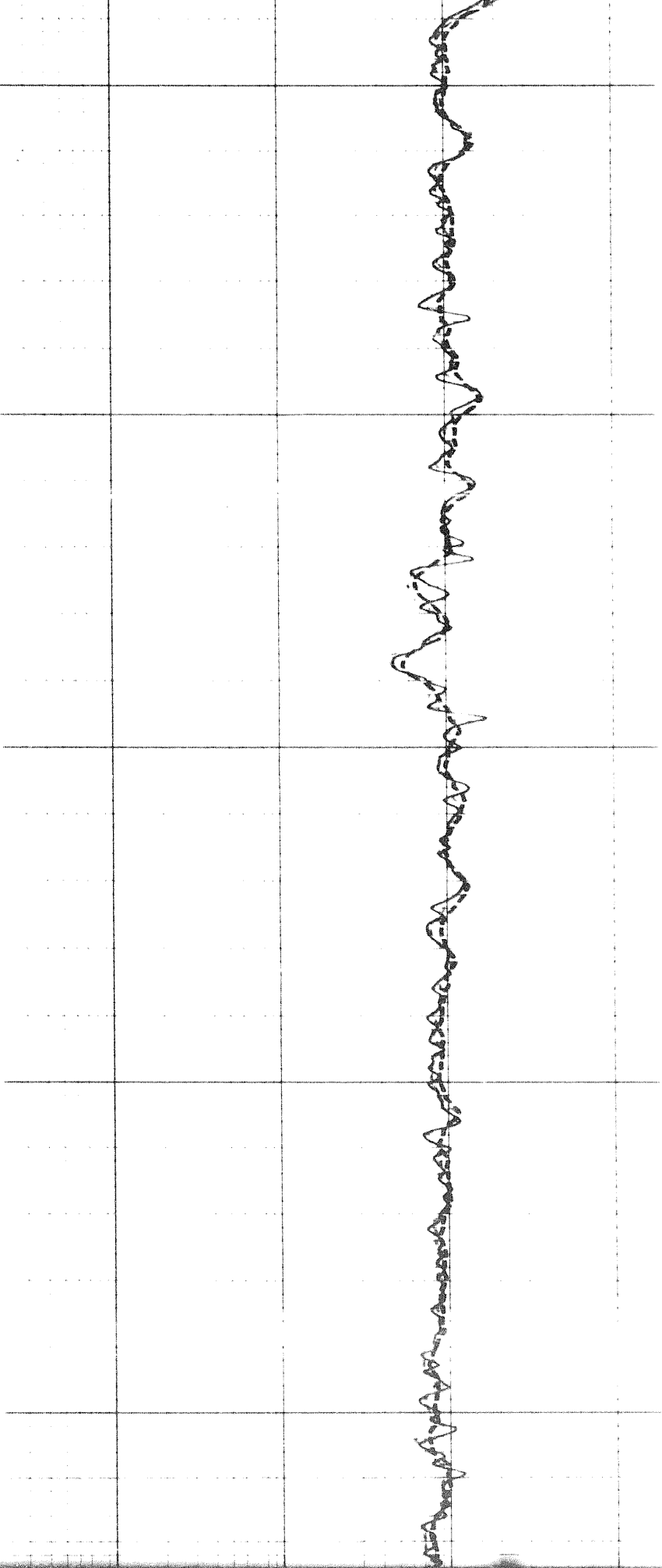
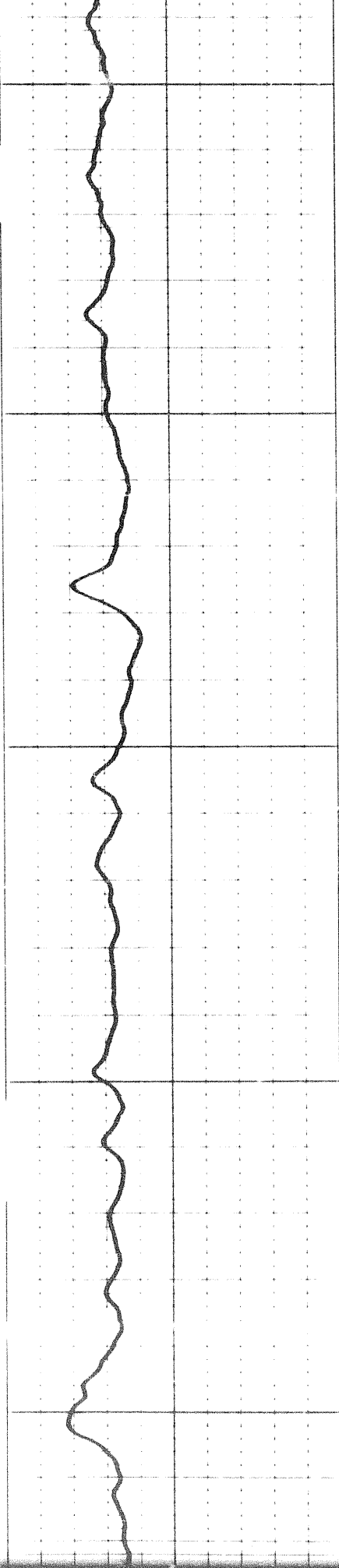
2600

2700

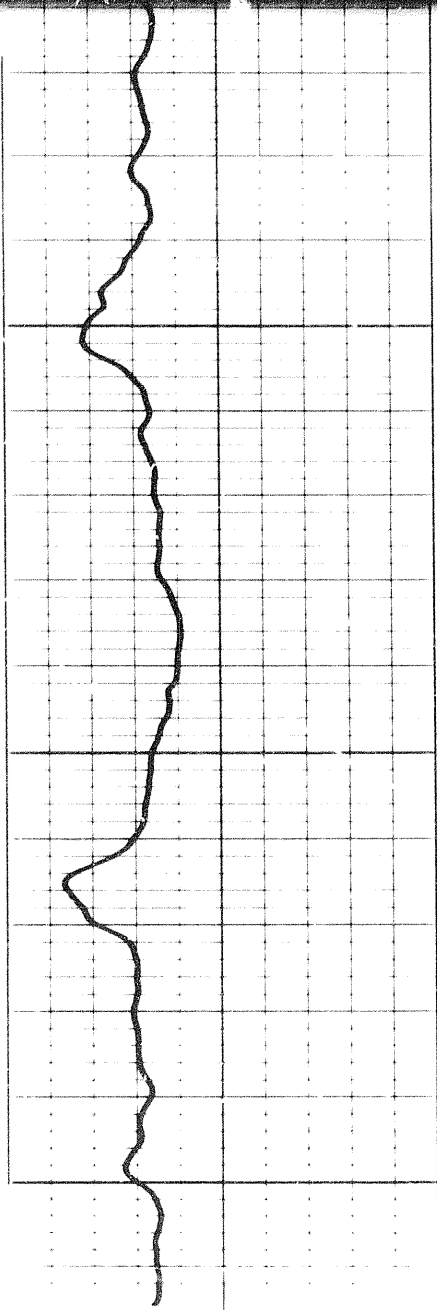


2700

2907

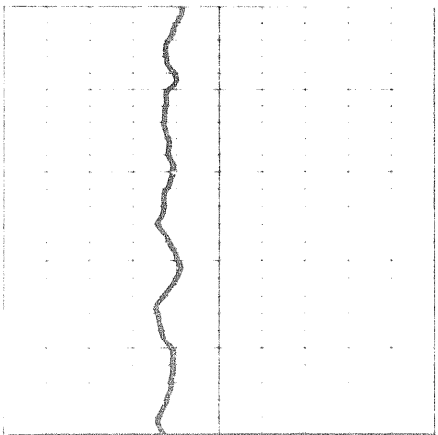
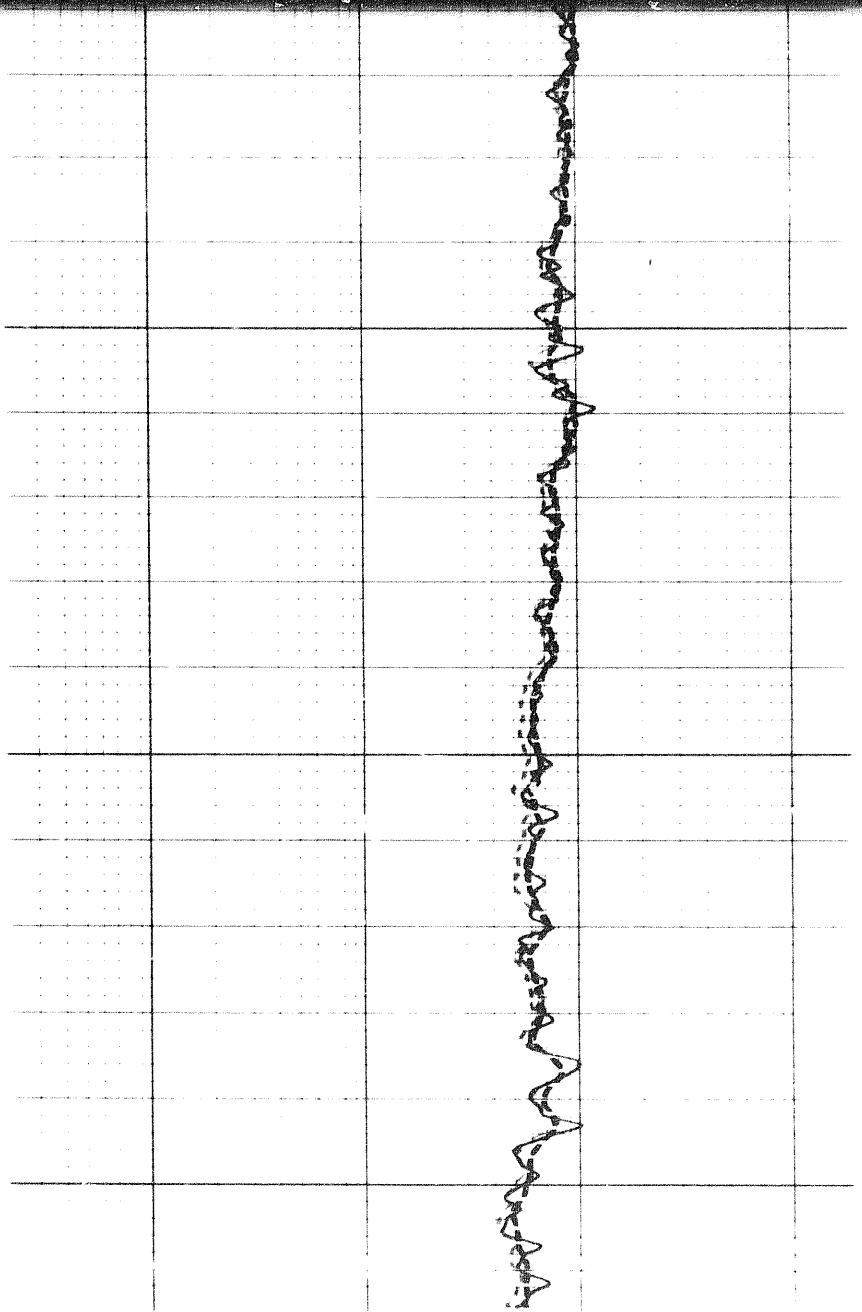




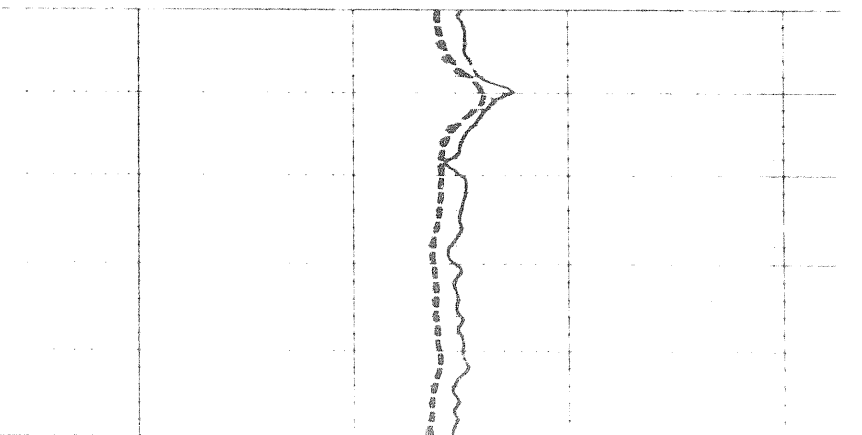


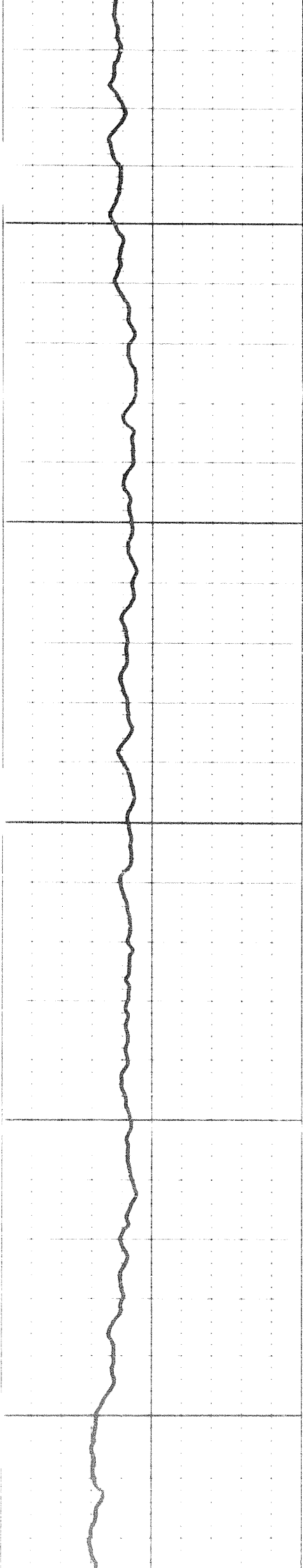
2900

3000



3000

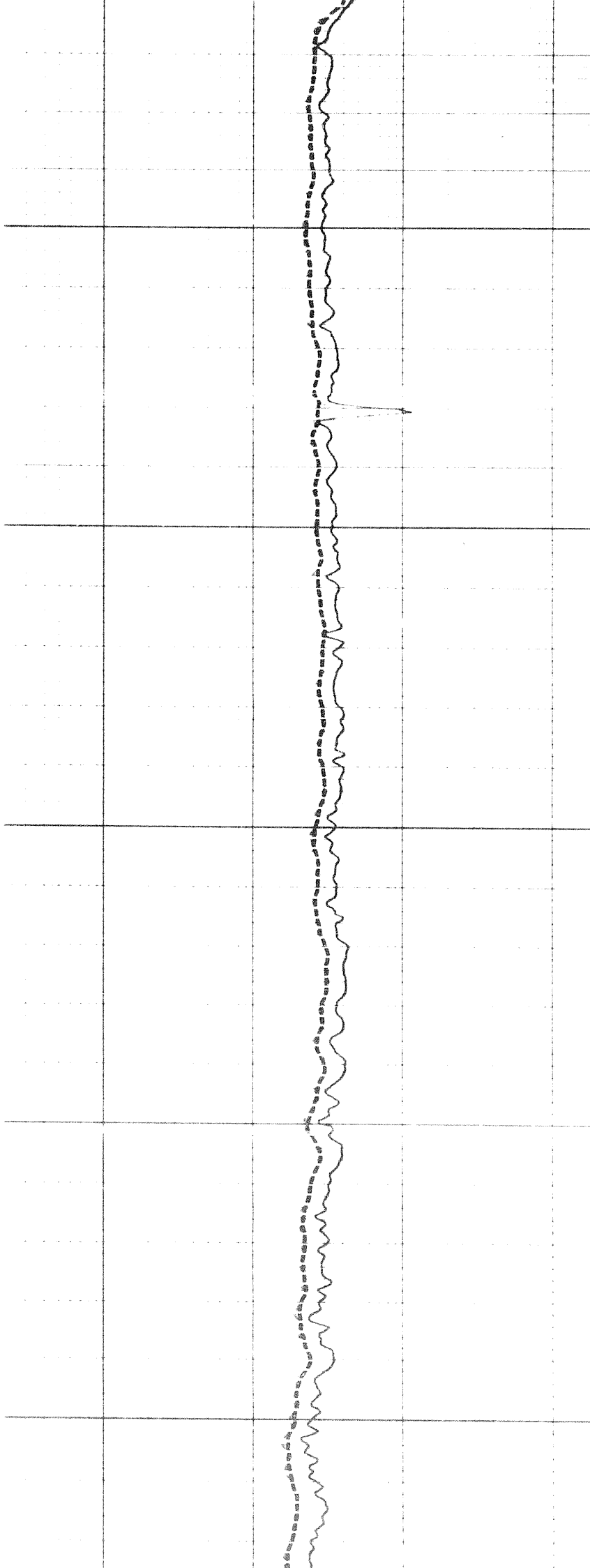




5400

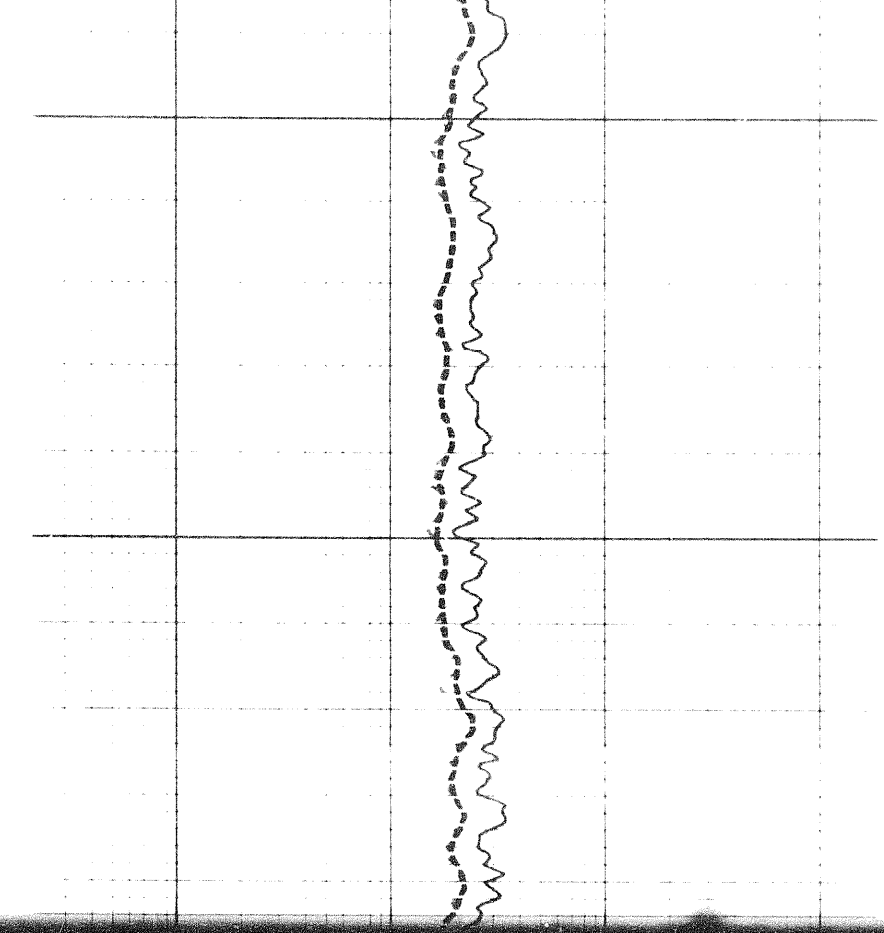
5300

5200

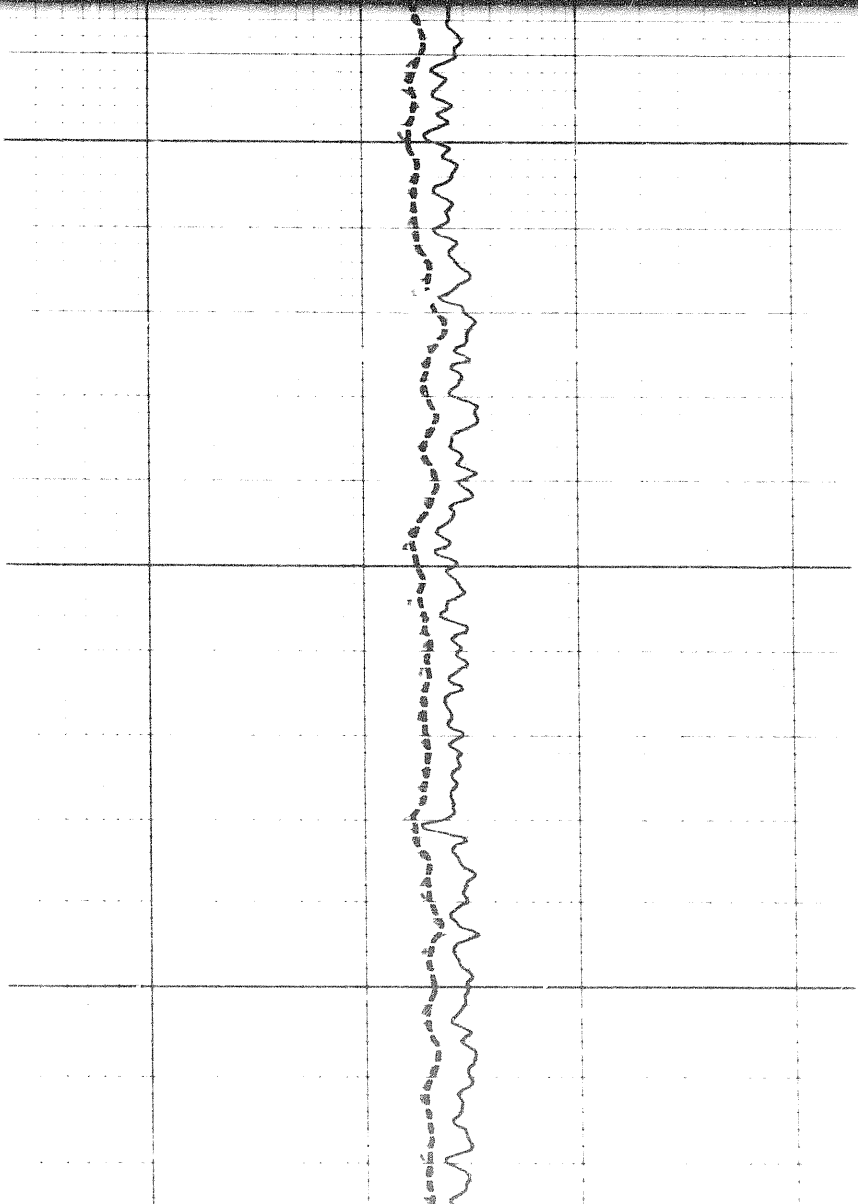


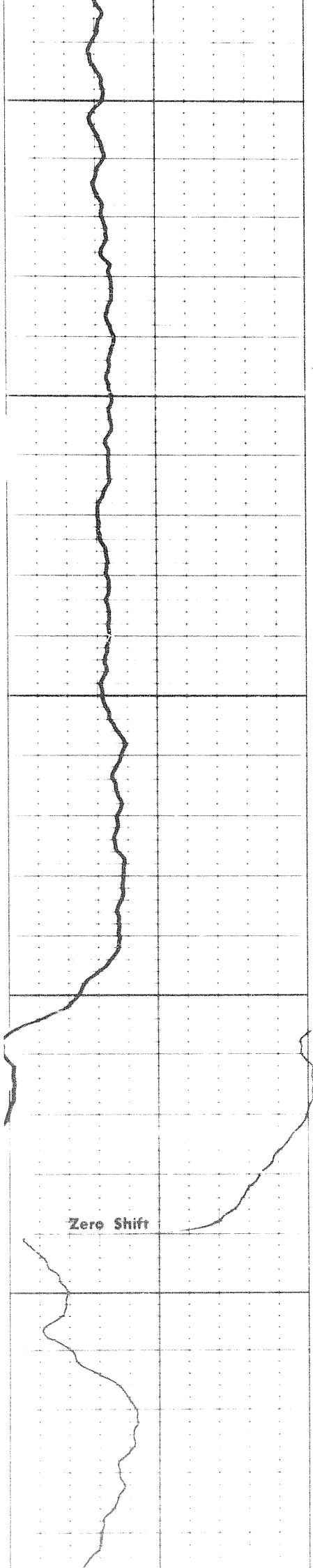
70 b

0000



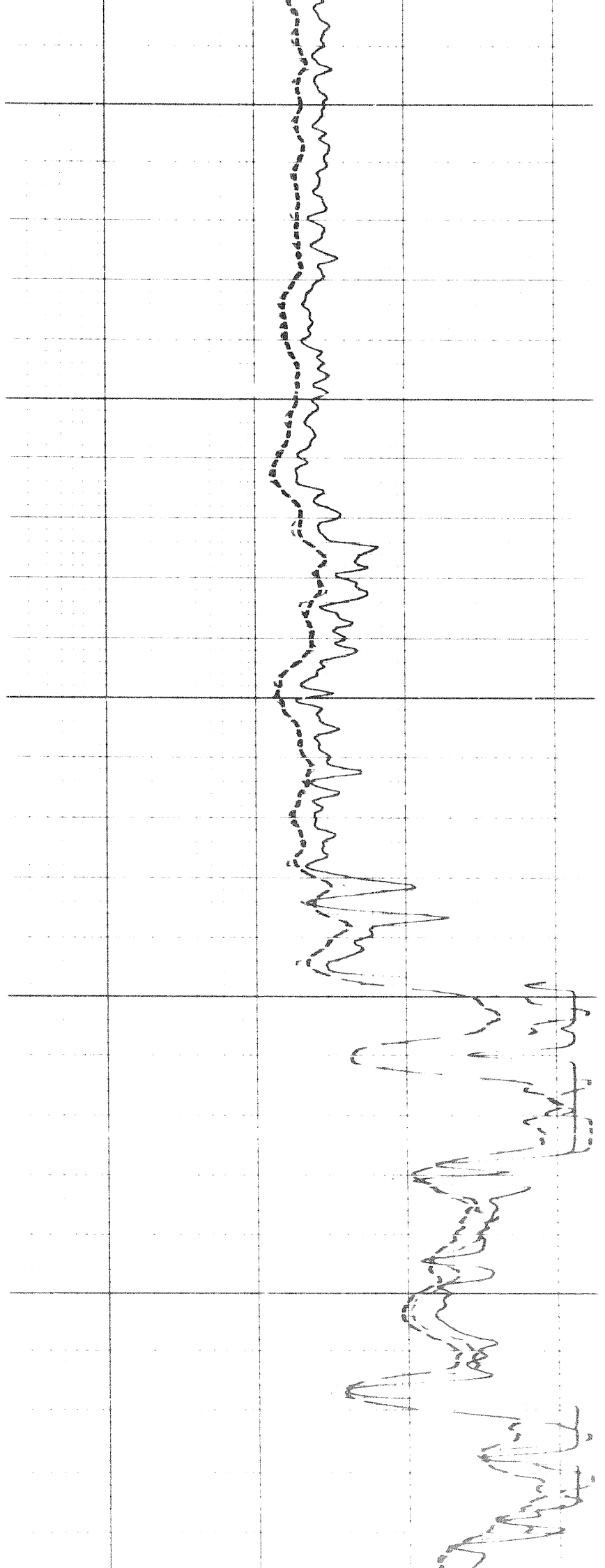
0000



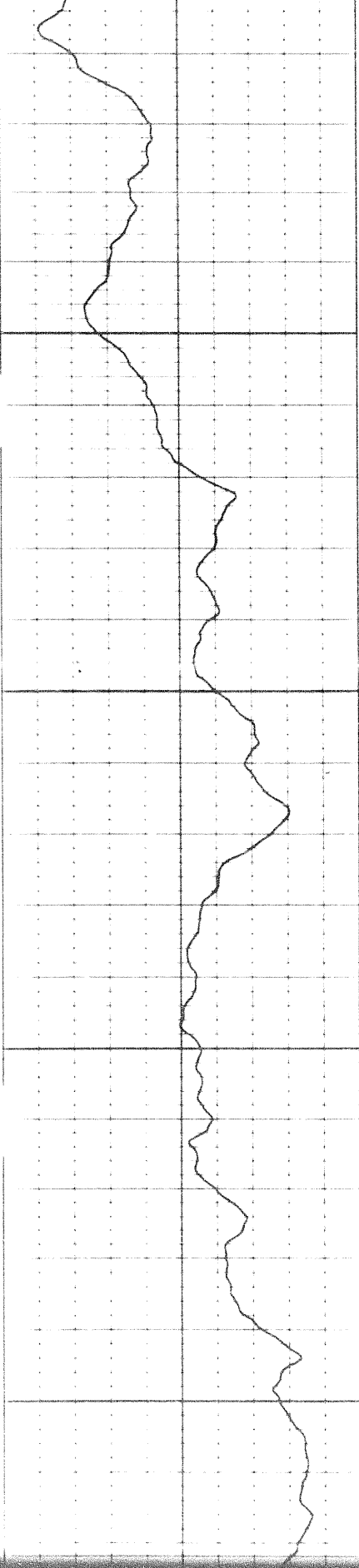


0085

0085

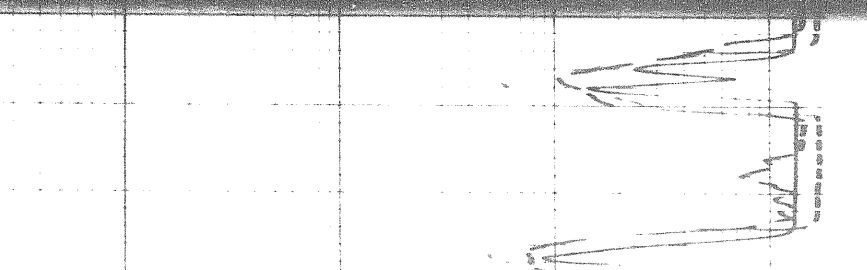
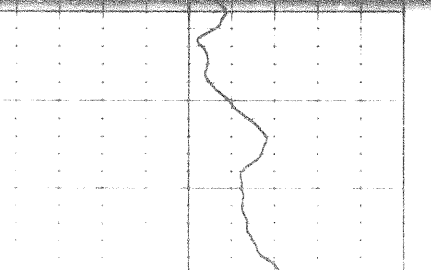
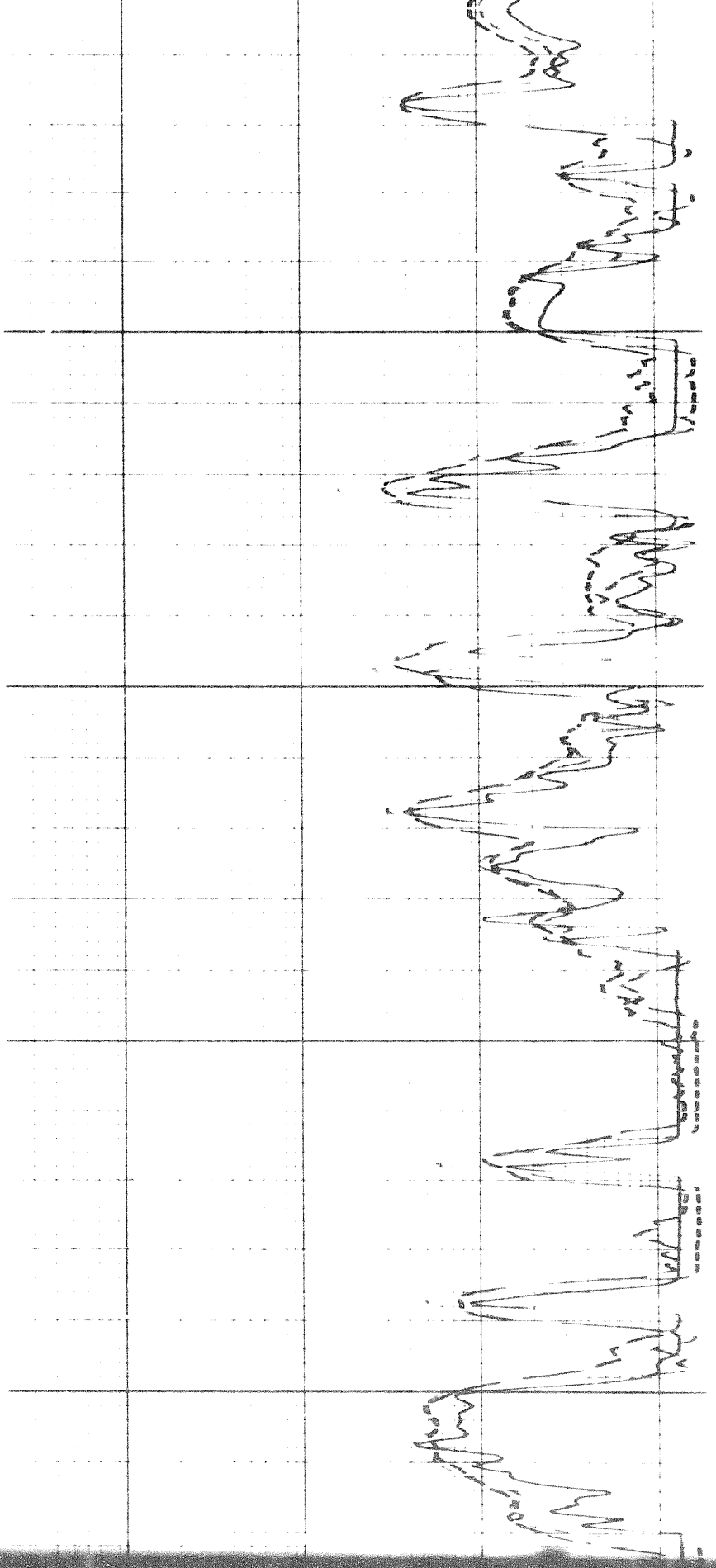


100



0009

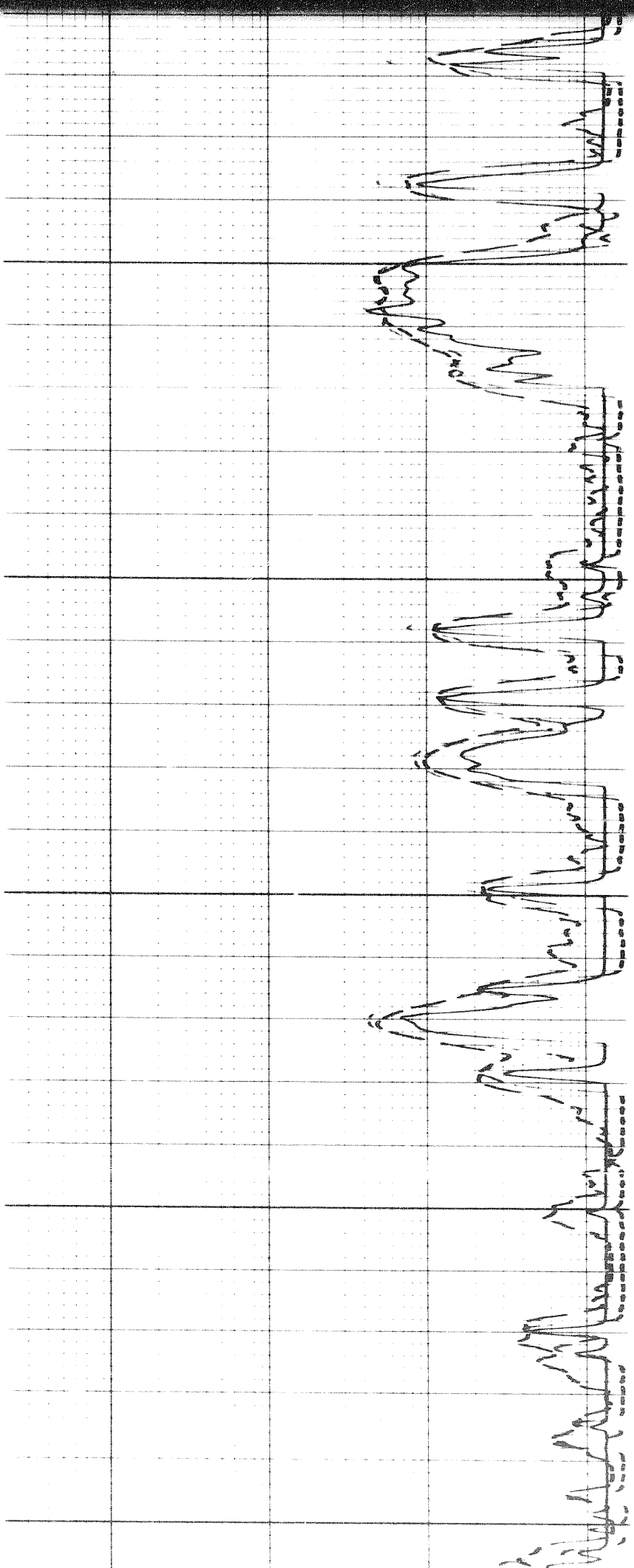
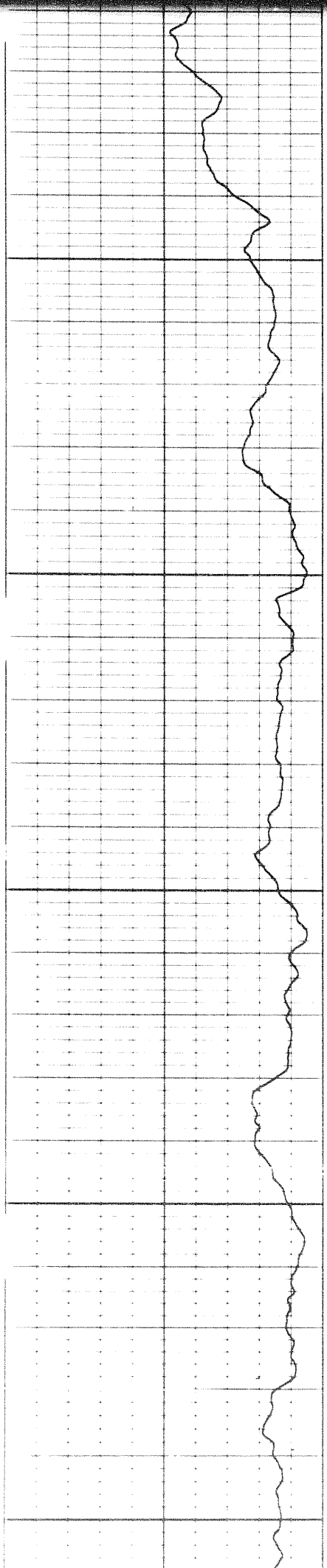
0019

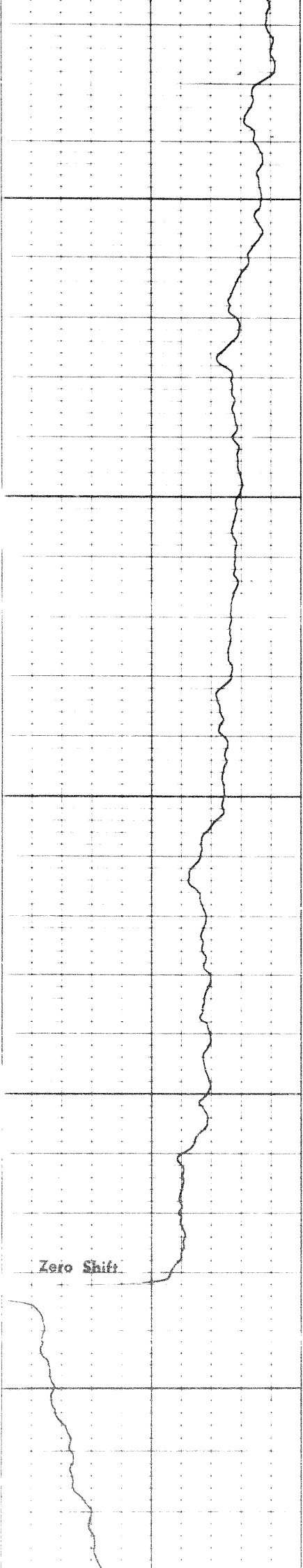




6200

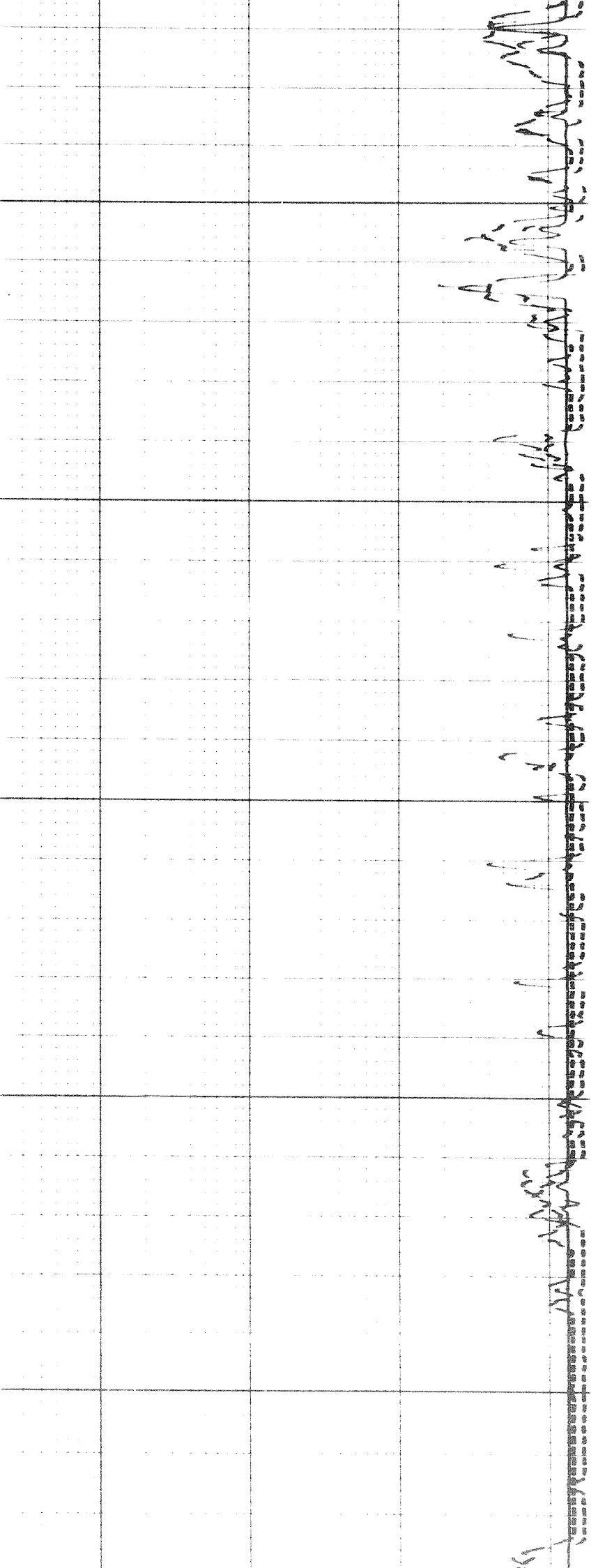
6300

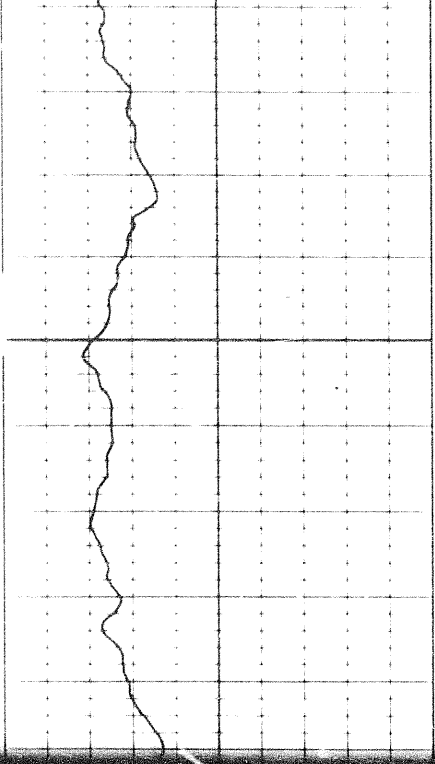




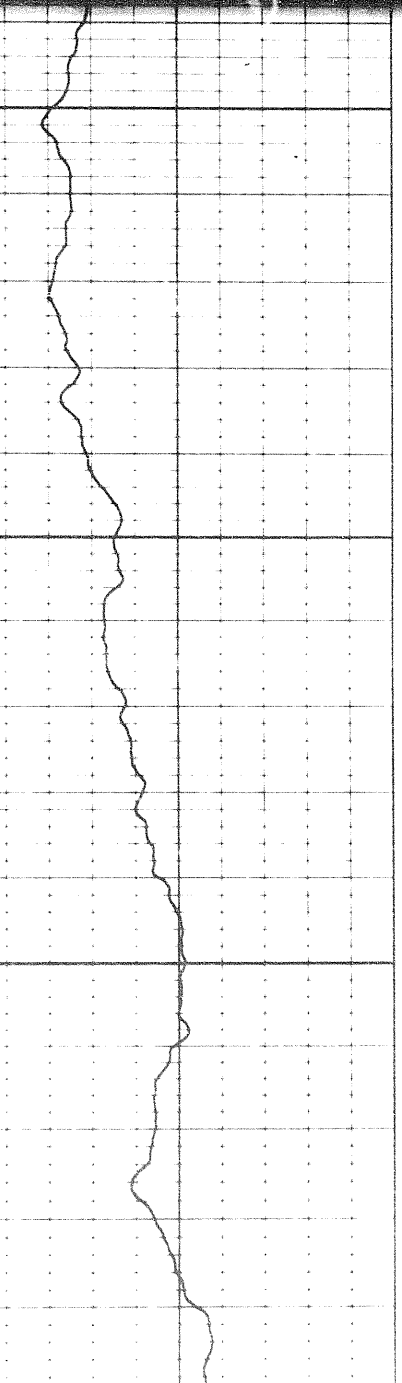
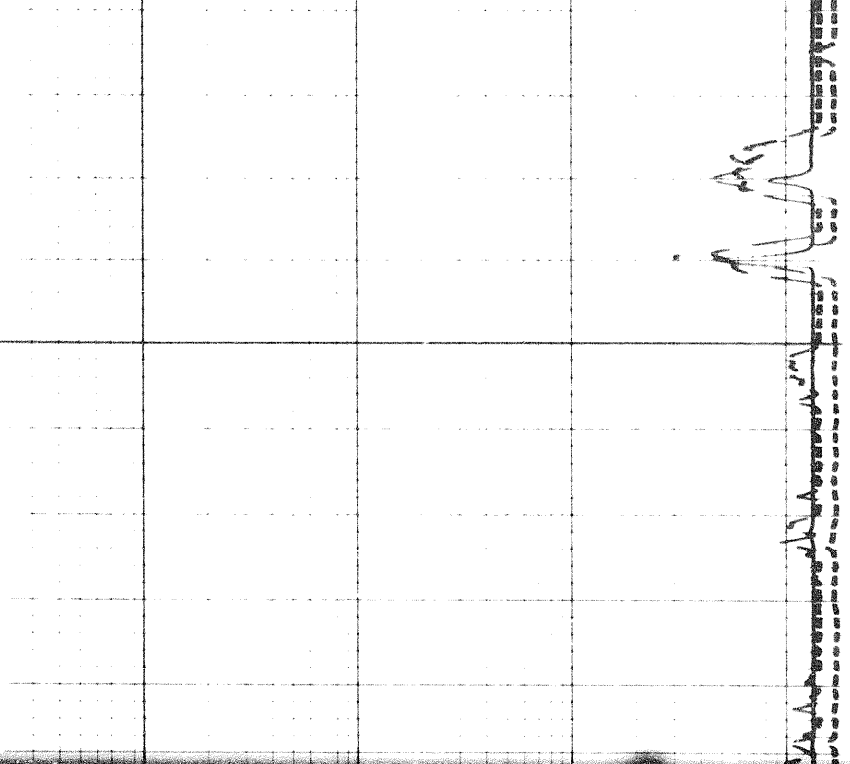
6400

6500

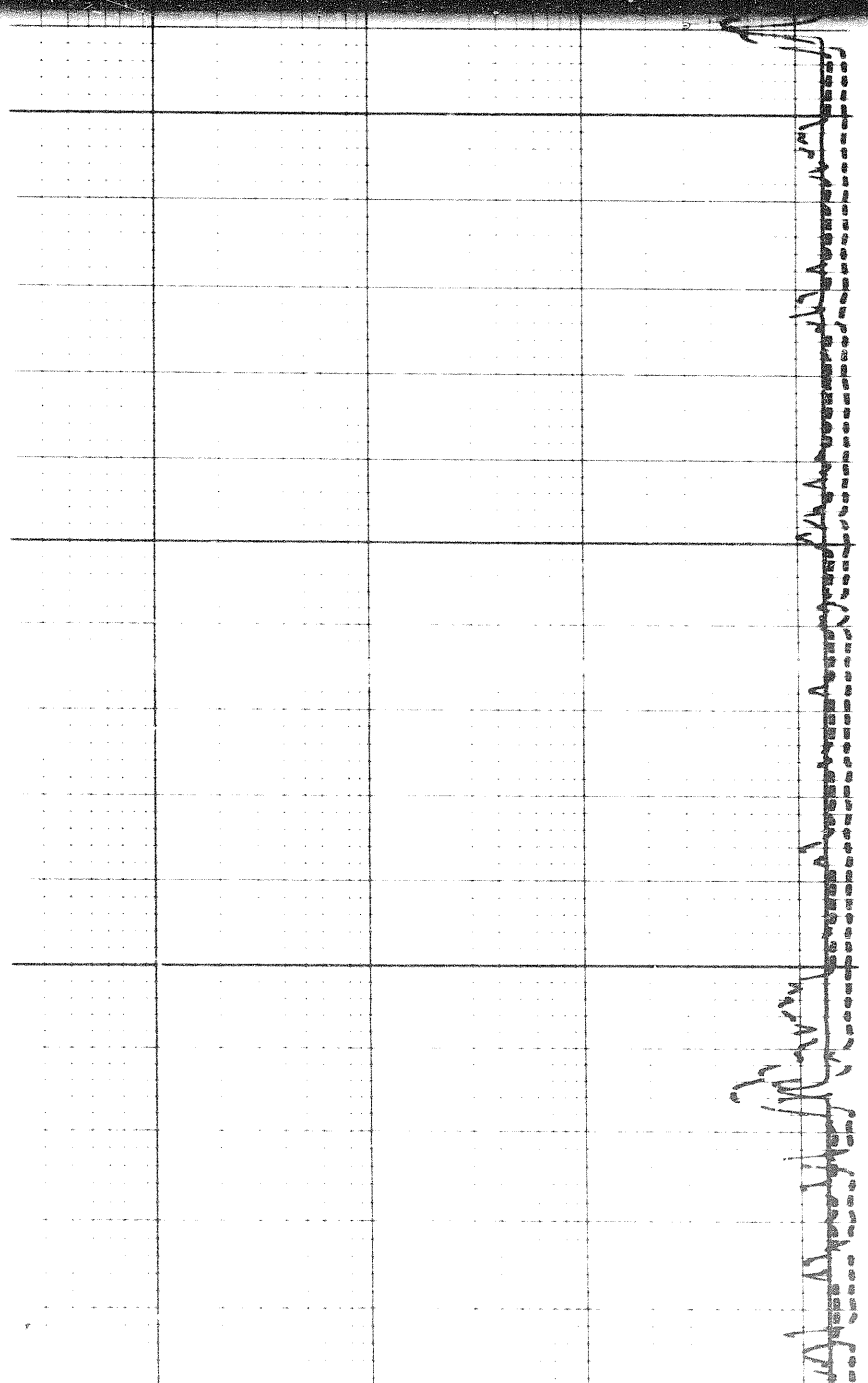




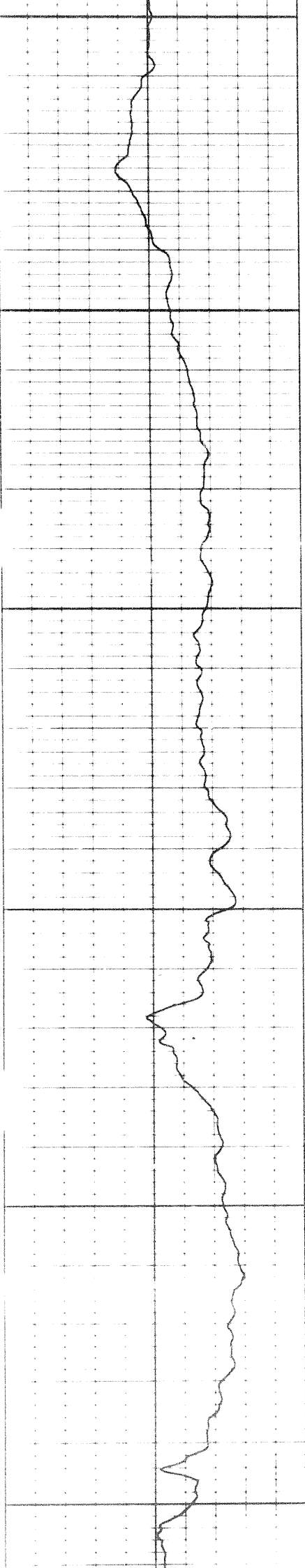
0099



0099



0099

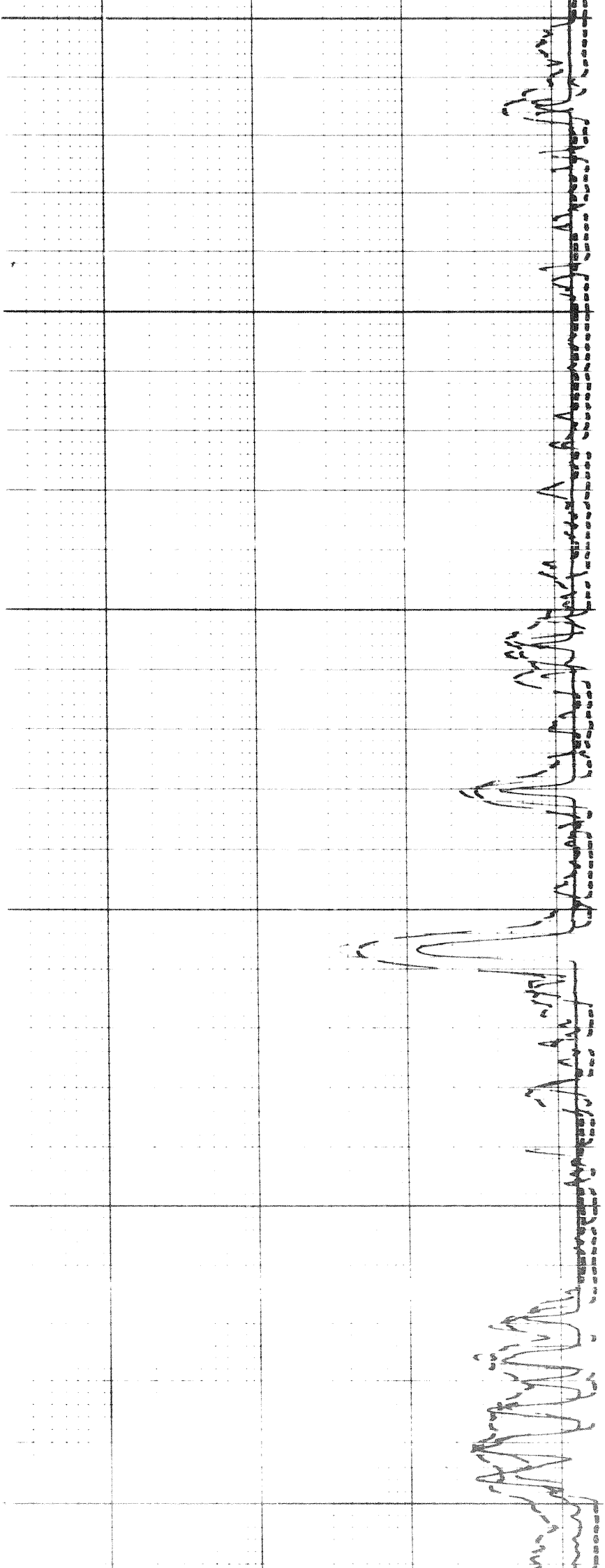


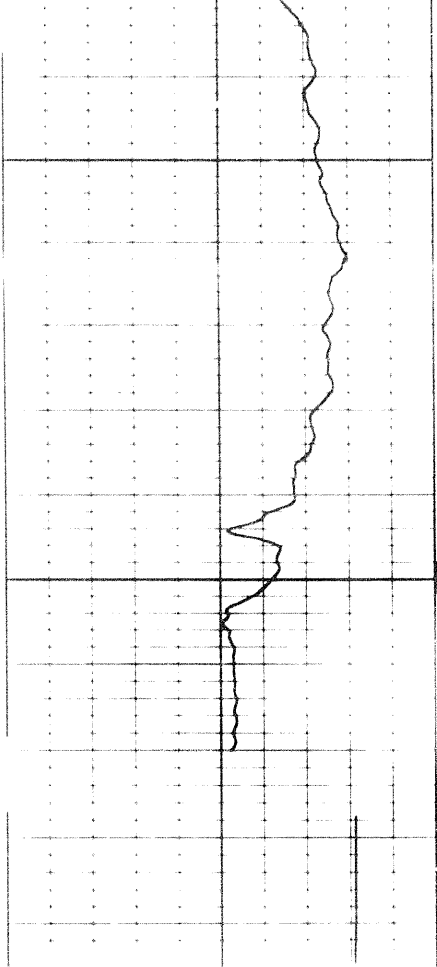
FR

0069

0089

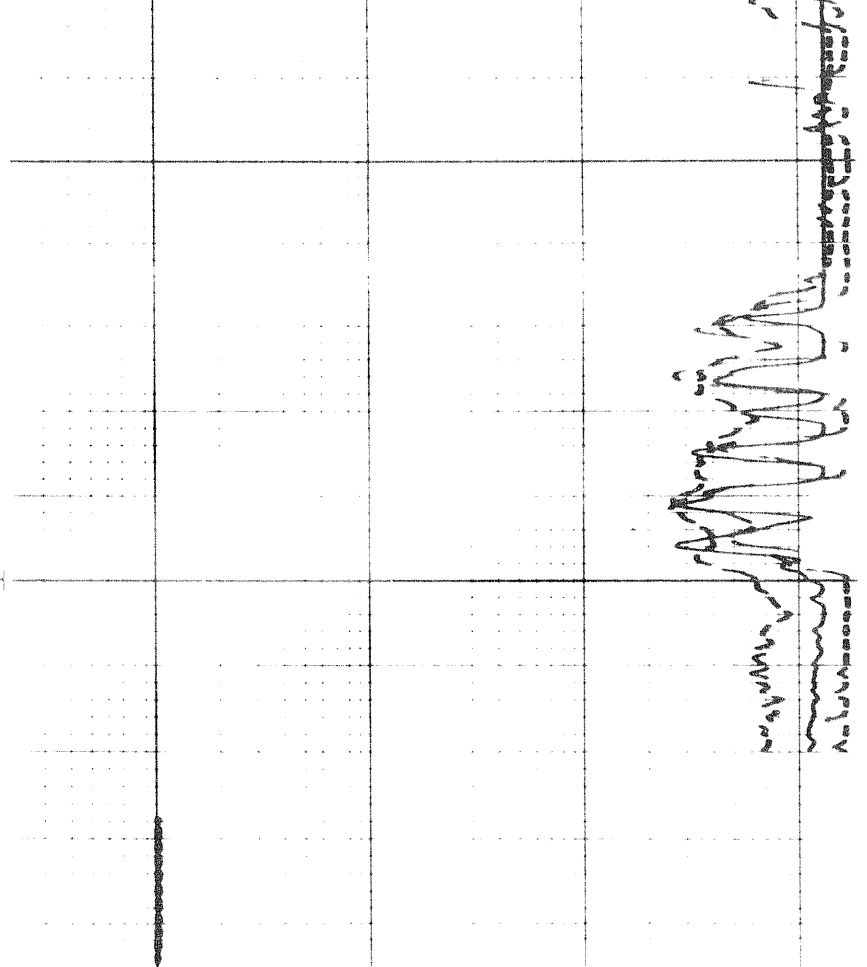
0079



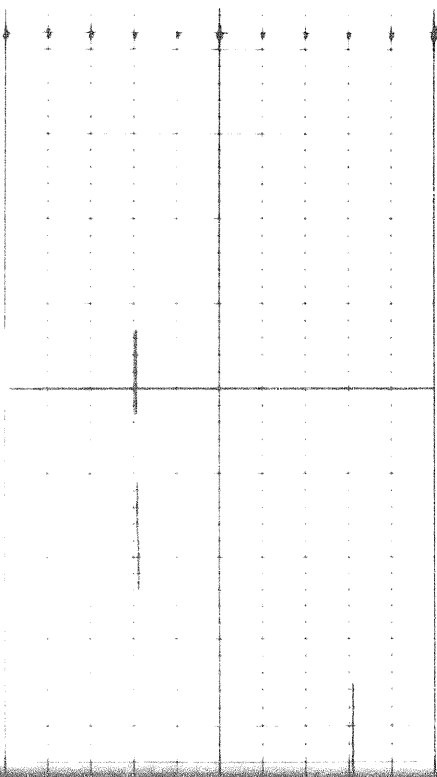


0069

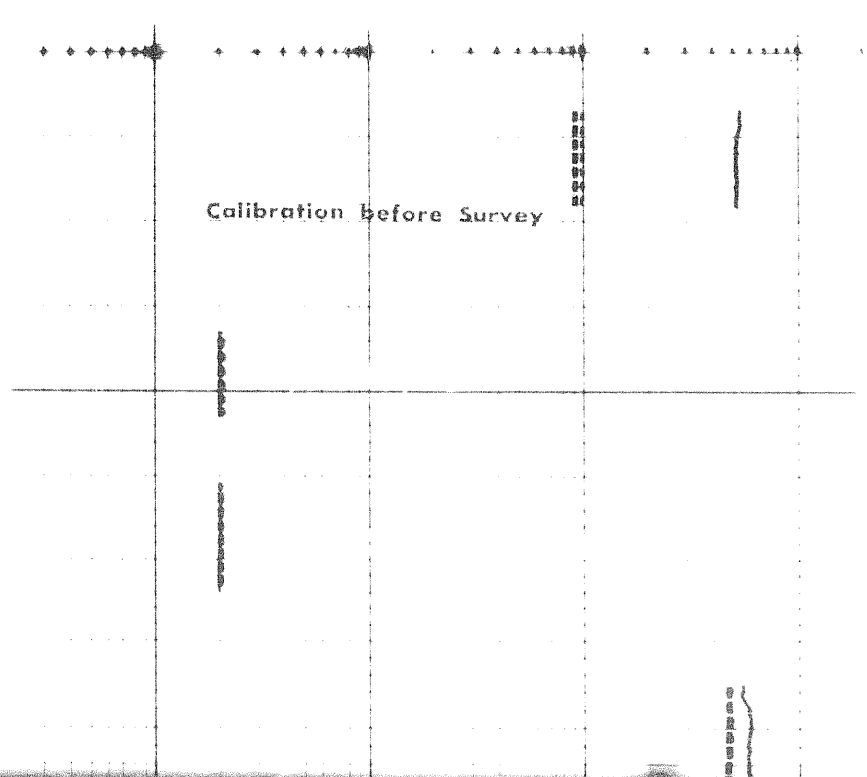
FR



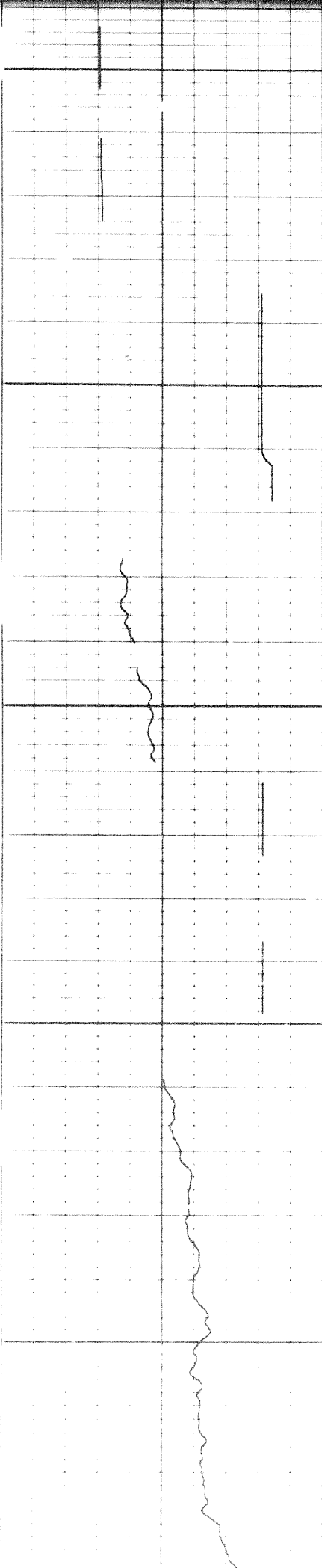
REPEAT SECTION



0099



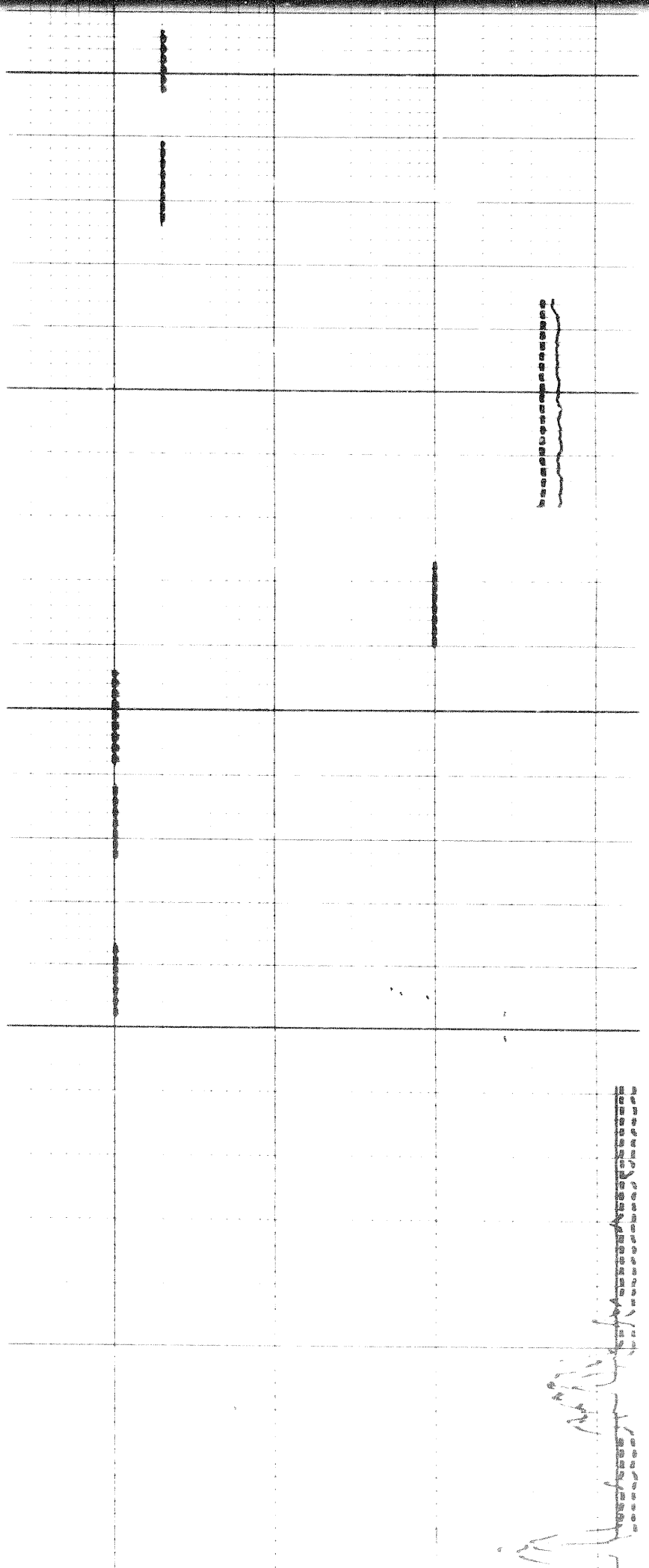
Calibration before Survey



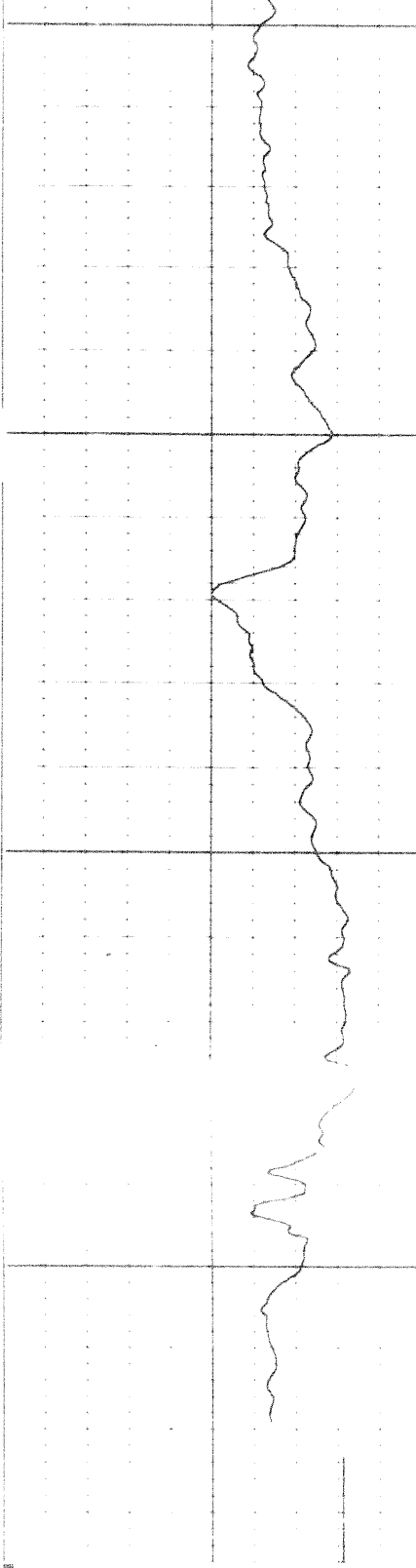
0099

00/9

00/9



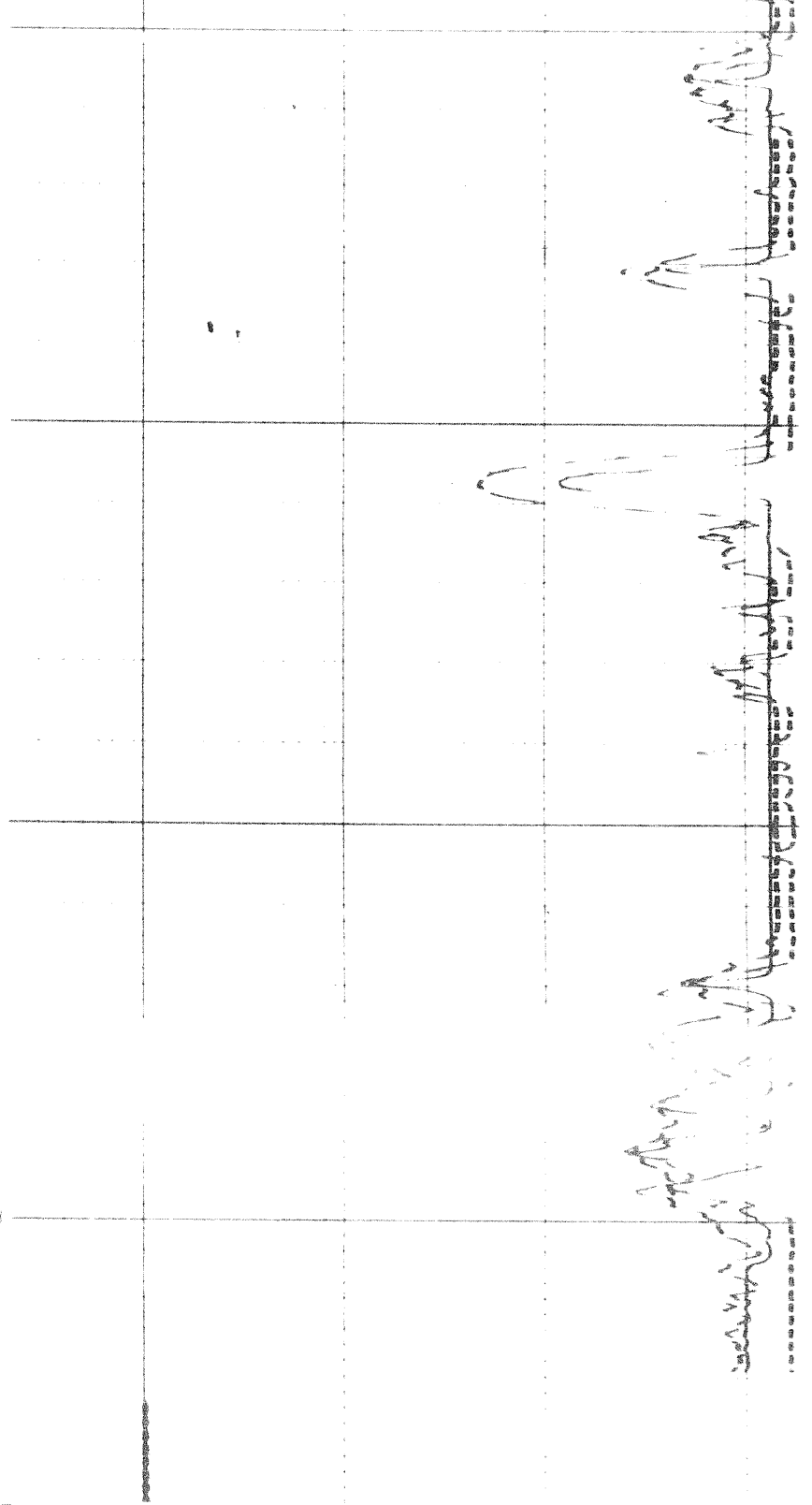




FR

0069

9 0



1 10 100 1000

DEEP INDUCTION LOG

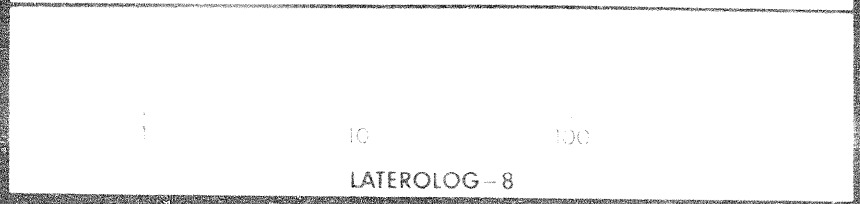
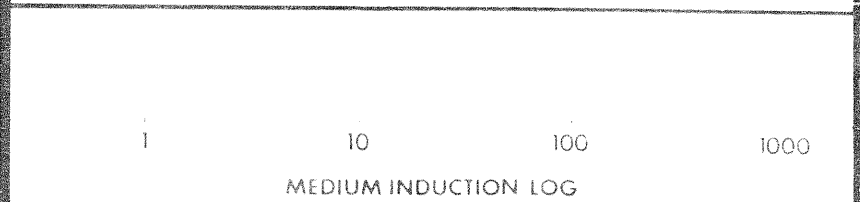
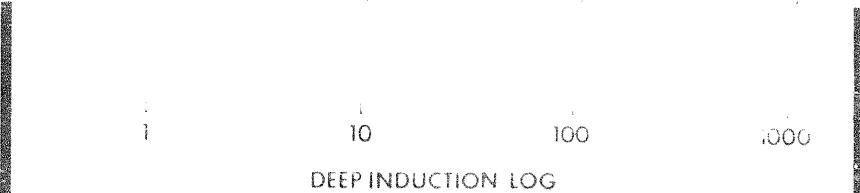
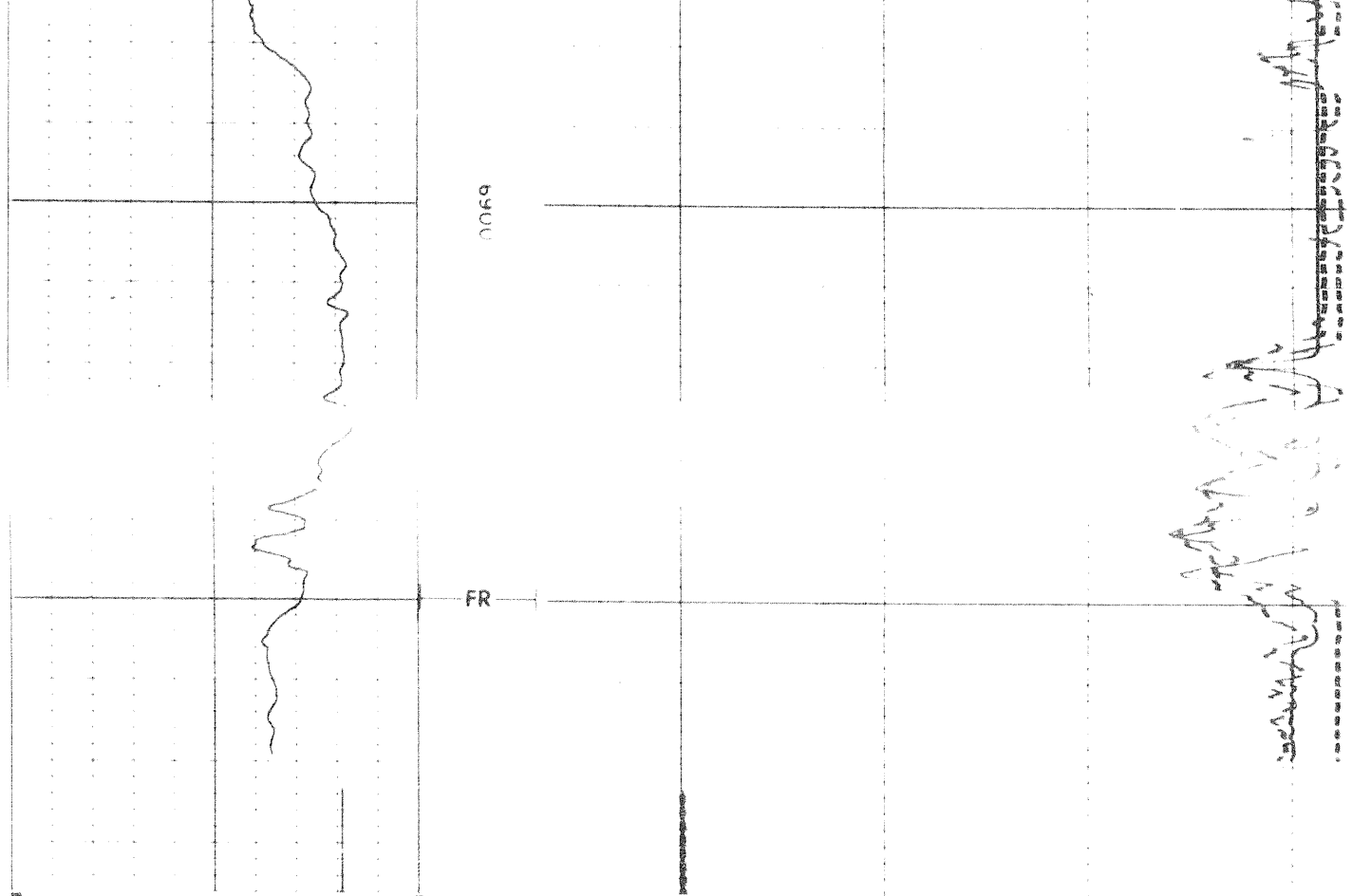
1 10 100 1000

MEDIUM INDUCTION LOG

LATEROLOG - 8

13 2115

Speed in FPM



SPONTANEOUS-POTENTIAL millivolts	DEPTHS	RESISTIVITY ohms m m
-------------------------------------	--------	-------------------------

COMPANY

WELL

FIELD PROVINCE

**Schlumberger**