

TIGHT HOLE Yes  No

S WHITESTONE N-SR

Well: MURPHY MESA BP WHITESTONE ~~S~~ NO. 1 Date December 12, 1972

Samples: Distribution: \_\_\_\_\_  
 SUR to TD 10 ft. samples Government  
 SUR to TD 10 ft. samples Murphy and Partners  
 \_\_\_\_\_ to \_\_\_\_\_ ft. samples \_\_\_\_\_

Cores:	Formation	Core Point		Core On*	Cut Core to: (Total 4 cuts)		
		Subsea	K.R.		Subsea	K.B.	Feet
1.	SEE BELOW						
2.							
3.							
4.							

\*Core on: (1)SS core point; (2) controlled drilling; (3)wellsite geol. pic

Drill Stem Tests: after log evaluation except for \_\_\_\_\_

Geological Markers:

Formation:	Subsea Est.	Est. KB Depth Est.	Actual KB Depth Est.	Log Depth*	Log Subsea
S. E. CRETACEOUS		2832			
ORANGE 'M' CRETACEOUS		5040			
PALEO. UNCONFORMITY		5931			
TOP PERMIAN JUNGLE CREEK*		6171			
BASE " JUNGLE CREEK		6810			
TOP MISS. SHALE		8210			
Permafrost base		450'			

\*Mark porous formations with an asterisk(\*)

Partners.	Notify Prior to (F)	Representative	Phone:	
			Bus.	Res.
MESA PETR.				
BPOG				
CHEVRON				
IMPERIAL		TO BE ADVISED		

NOTE: Continuing coring is proposed in the Jungle Creek providing hydrocarbon shows continue

(F) Notify prior to: (1)Log; (2)Test; (3)Core; (4)Casing; (5) Abandonment

Recommended by: W.H. Nixon Dec. 12 1972 Approved by: \_\_\_\_\_ 19

TIGHT HOLE Yes  No

Well: Murphy Mesa BP Whitestone N-58  
Whitestone 8. No. 1 Date: Dec. 1/72  
Est. T.D. 7300' Surveyed G.L. \_\_\_\_\_ Est. K.B. \_\_\_\_\_ Act. K.B. \_\_\_\_\_  
Drilling Contractor G.P.

Logs and Surveys: Logging Contractor Schlumberger

Run	Type	Scale	Interval
1	Dual Induction	2"	Surface csg. to T.D.
	0-20-200	5"	5500 to T.D.
2	BHCS-AVL-GR-CAL	2"	Surface csg. to T.D.
	40-90-140	5"	5500 to T.D.
3	Formation Density	2"	5000 to T.D.
		5"	5000 to T.D.
	C.S.T. & Neutron		Tools on lease if required.

Number Field Prints 5 Final Prints 12

Hole Size:  
Surface Drill 30" to 60' Dev. to 0 Max. Survey every - ft.  
Below Surface Drill 17-1/2" to 1000' Dev. to 1 Max. Survey every 100 ft.  
Below Intermed. Drill 8 1/2" to FTD Dev. to 3 Max. Survey every 500 ft.

Casing:	Suppliers:	Franklin Pipe - Chevron Conductor
String Depth	Csg. Size	Wt. Grade Cement and Additives:
Surf. 60'	23&19"	- - 200 sx Coldset Cement
Surf. 1000'	13-3/8	48 H40 1050 sxs Class G.
Production FTD	7"	23&26 K55 1200 sxs Class G.

Float Equipment: B.J. Cementing Contractor: B.J.

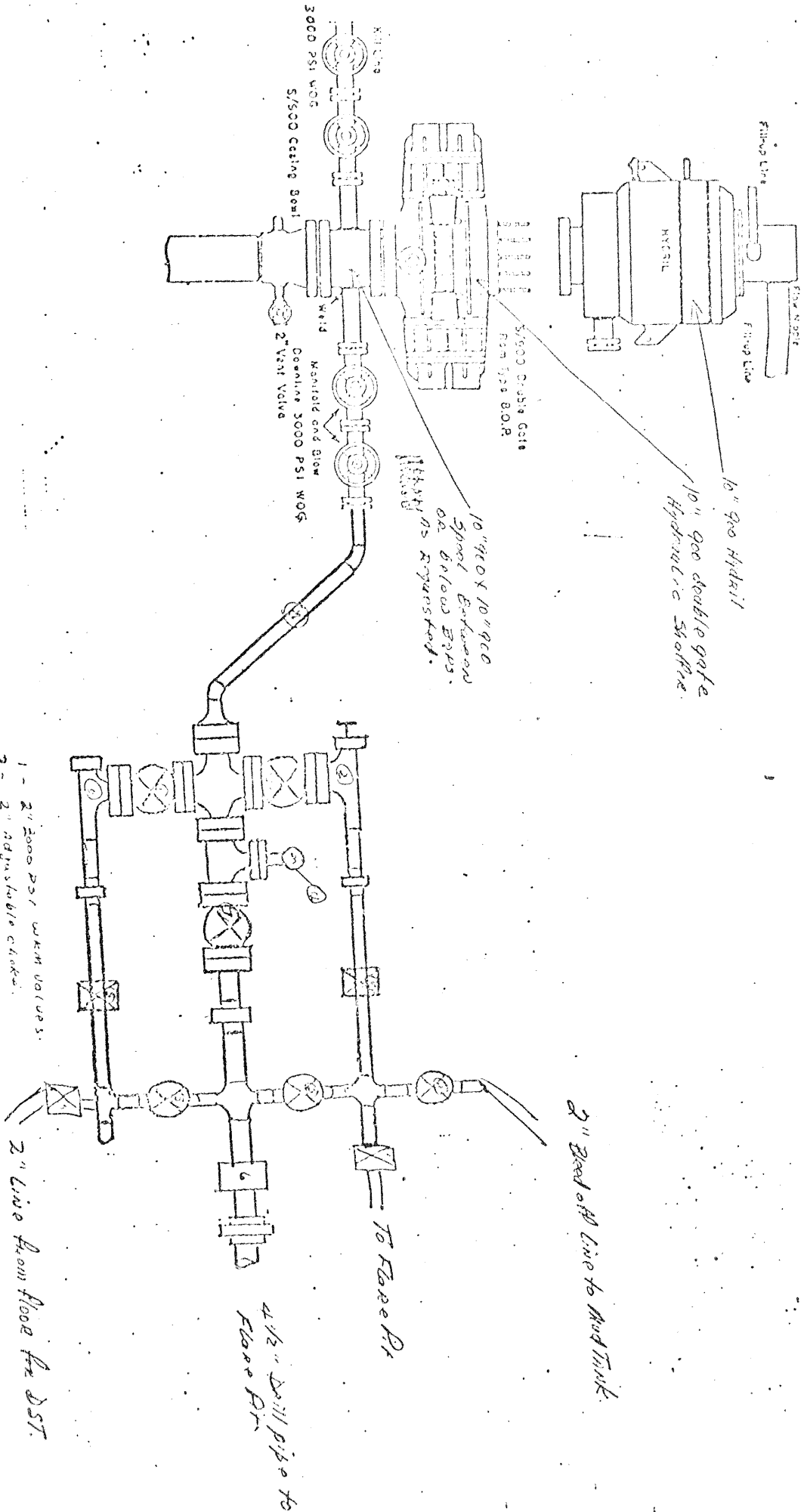
Drilling Mud: Mud Contractor: Magcobar  
Interval Type Weight Visc. WL, cc Other:  
Surface hole - Magcogel - Rapidril - wt. 9.8 WL 12  
To Total Depth - Magcobel - Rapidril  
Visc 70 wt 10-12 WL 8-10

If needed, add Spersene for good flow properties. Soda Ash to control calcium - CDC for water loss.

Special Services:

Type	Contractor	Instructions
Coring	<u>B.J.</u>	
Testing	<u>B.J.</u>	

Prepared by: [Signature] Dec 11 1972 Approved by: \_\_\_\_\_ 19\_\_



- 1 - 2" 3000 PSI W.O.G. VALVES.
  - 2 - 2" Adjustable choke.
  - 3 - 2" Positive Choke.
  - 4 - 2" 3000 PSI Mud gauge.
  - 5 - 2" 3000 PSI Cameron Mud Valve.
  - 6 - 3" 3000 PSI Cameron Mud Valve.
  - 7 - 3" 3000 PSI W.O.G. Valve.
  - 8 - 5" Sanderlin 80 pipe.
- 2" line from floor for DST.

2" Bleed off line to Mud Tank.

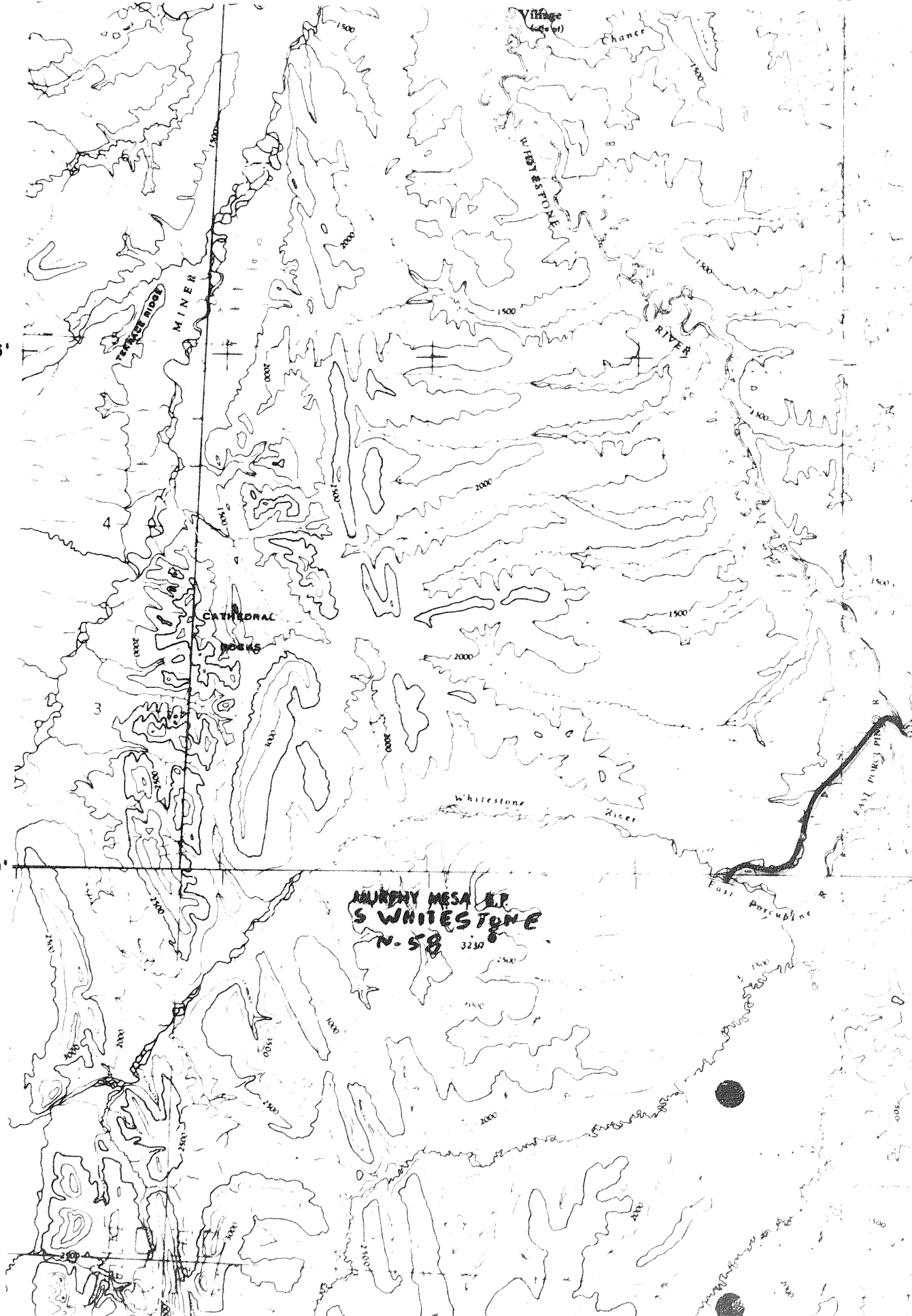
BP Reg 24. Dec 14/72.

137°

139°

15'

66°00'

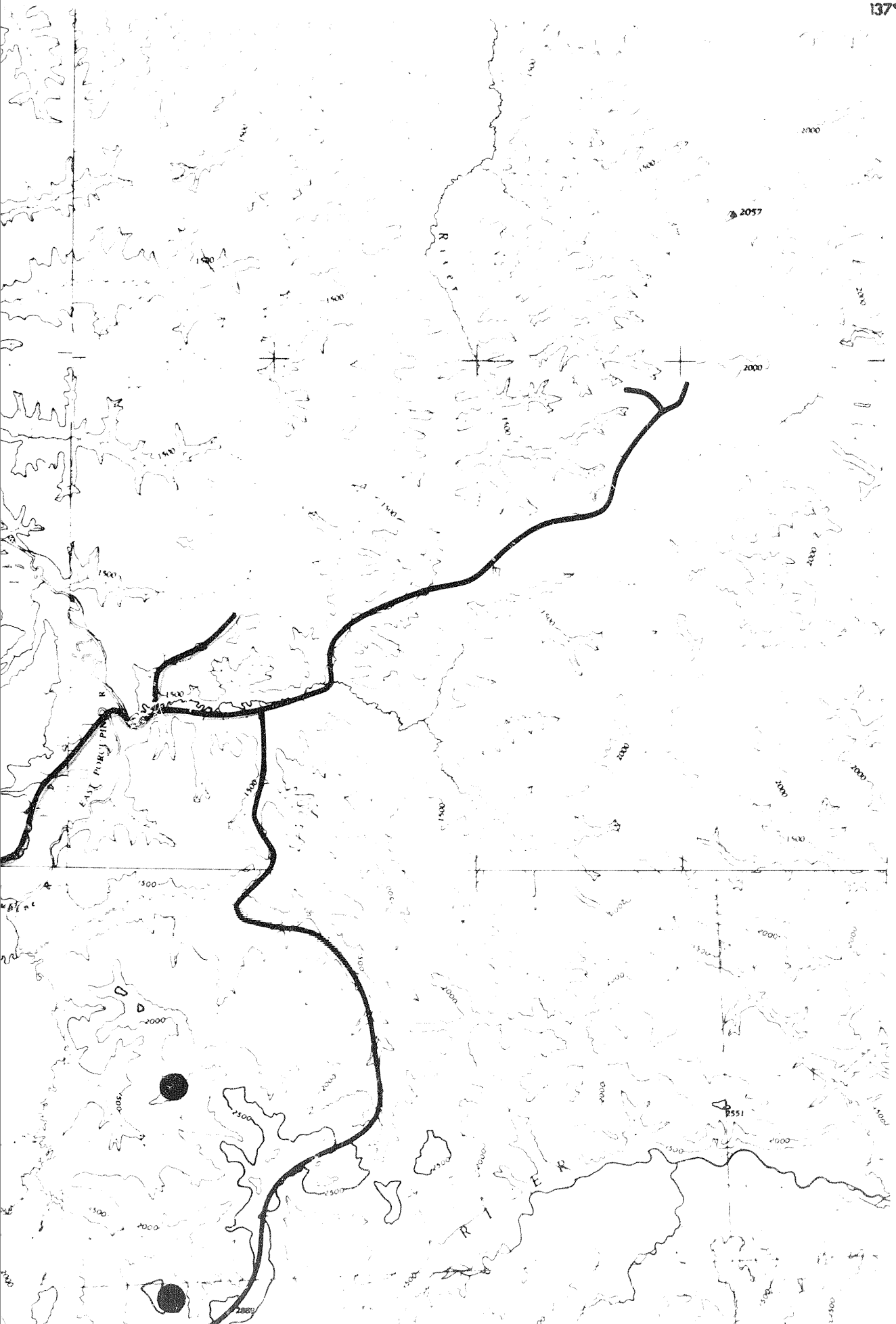


MURPHY MESA  
 S WHITESTONE  
 N-58



138°

137°



15'

66°00'

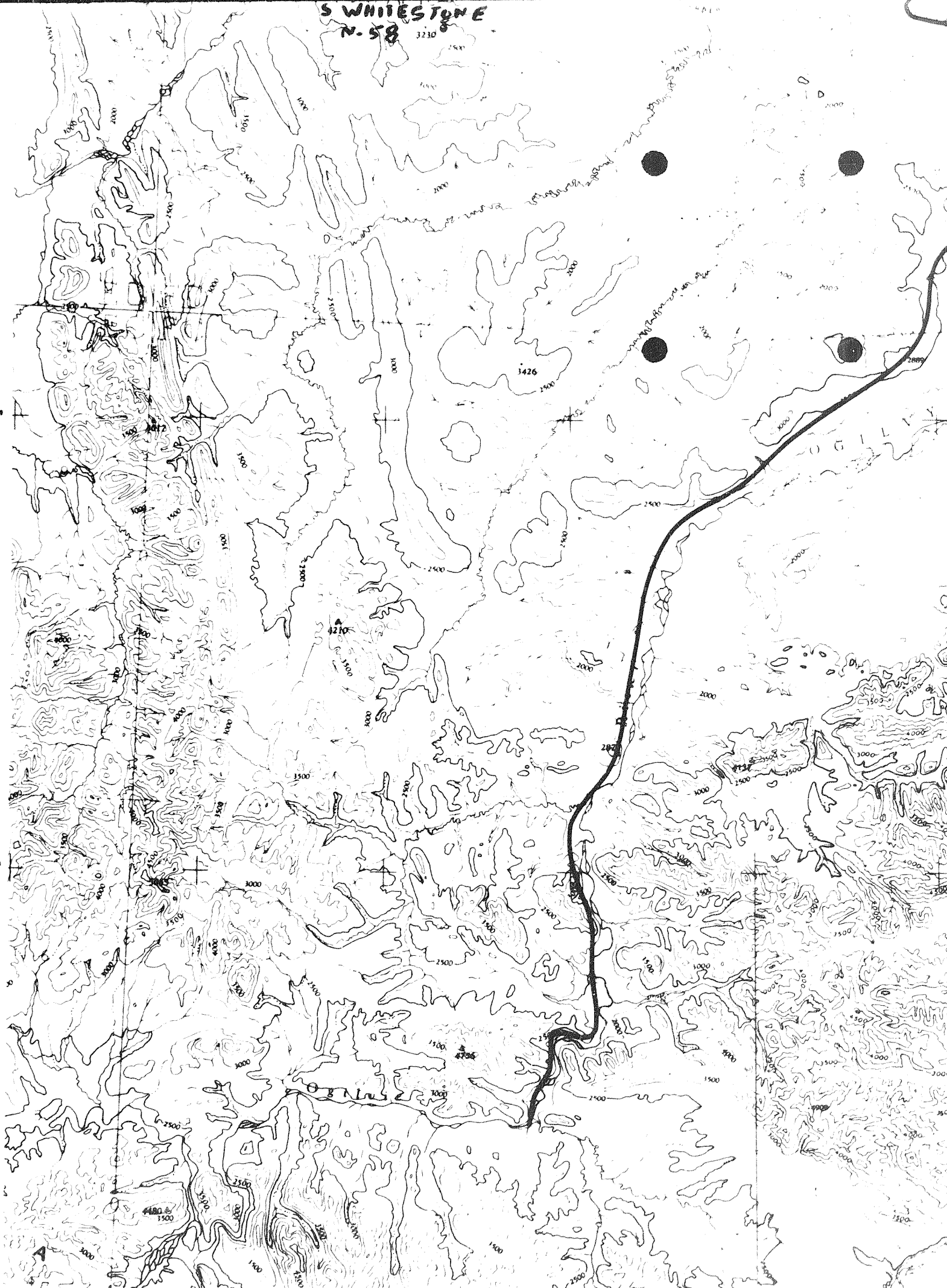
2057

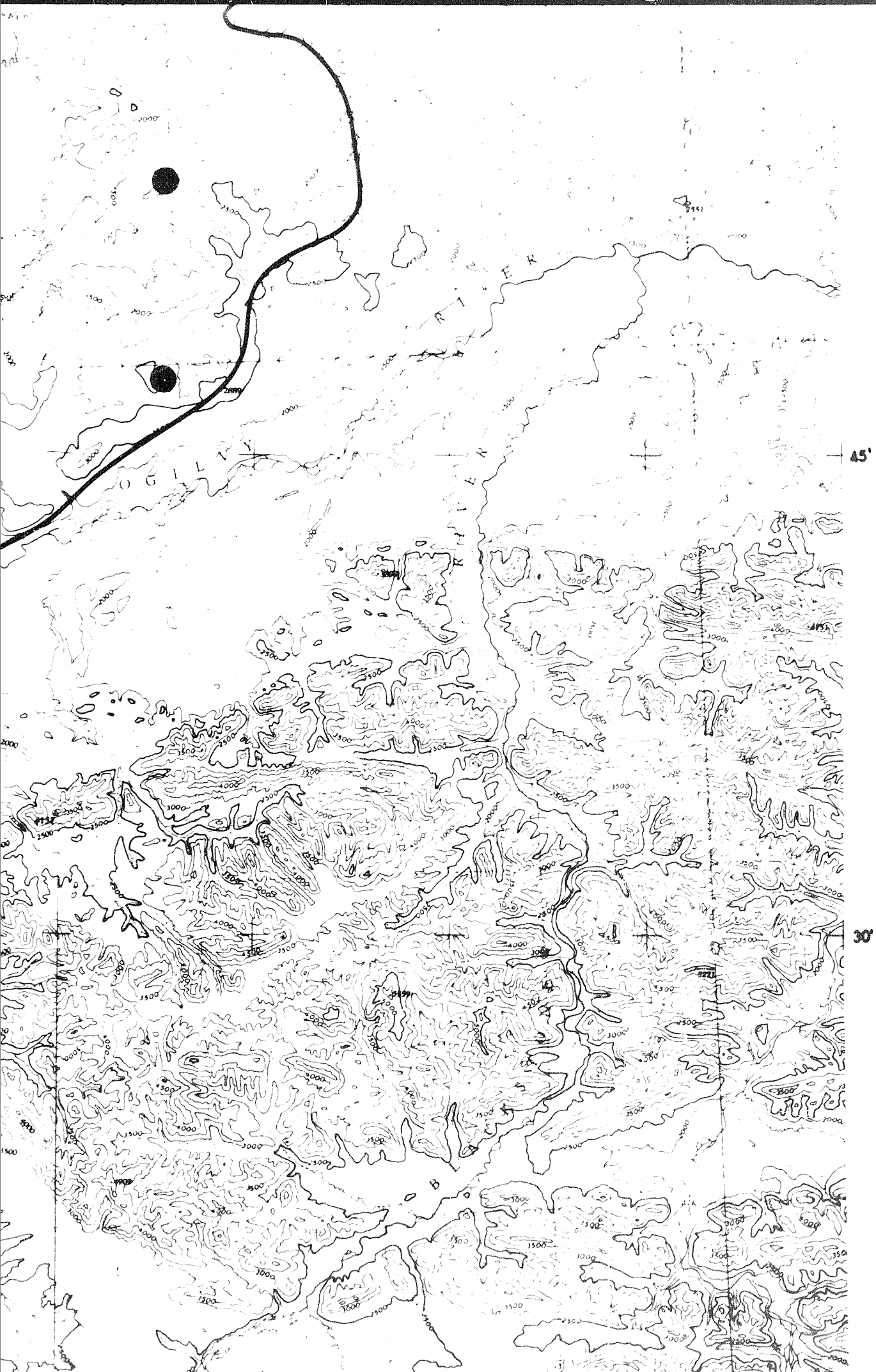
2551

S WHIESTONE  
N. 58

45°

30°





45'

30'