

# SCHLUMBERGER

## INDUCTION ELECTRICAL LOG

SCHLUMBERGER OF CANADA Calgary, Alberta

PROVINCE YUKON TERRITORY  
 FIELD WILDCAT  
 WELL SHELL PEEL R., YT  
 J-21  
 COMPANY SHELL CANADA LIMITED

Date	27 AUG 65
Run No.	ONE
First Reading	3981
Last Reading	497
Feet Measured	3484
Depth Reached	3982
Bottom Driller	4000
Csg. SOC	497
Csg. Driller	499
Mud Nature	GEL-CHEM
Dens.	9.4
Visc.	100
Mud pH	9.5
Water loss	10.8
Res.	RMKS @ RMKS of
@ BHT	RMKS @ RMKS of
Rmf	2.18 @ 63 of
Rmc	2.67 @ 63 of
Bit Size	6 3/4"
Specing - AM	16"
- MN	34'-6"
Ind Type	6FF40
Opr. Rig Time	3 HRS.
Truck No.	SKM-M-1576
Recorded By	MILLS
Witness	NEDHAM

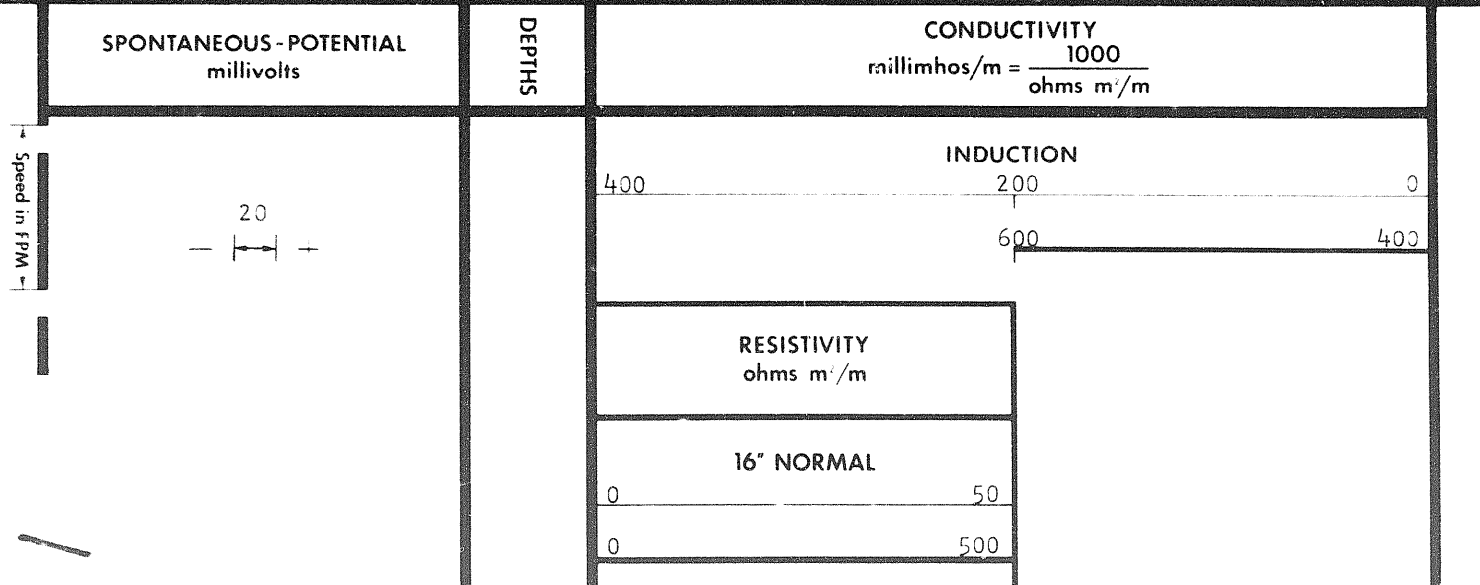
COMPANY	SHELL CANADA LIMITED
WELL	SHELL PEEL R., YT J-21
FIELD	WILDCAT
PROVINCE	YUKON TERRITORY
LOCATION	66° 30' 31.9" N 134° 04' 32.3" W
Permanent Datum	G.L. Elev. 137
Log Measured From	K.B. 13 Ft. Above Perm. Datum
Other Services:	SGR-C, ML, FDL CST., CBF
ELEV. KB	150
GL	137
CBF	

7SEPT65 CAL MB

REMARKS  
 Drilling Stopped 1000 / 27th : Circulation Stopped 1530 / 27th : Tool on Bottom 1900 / 27th : 1st Run Service Order # 27082  
 B.H.T. 120 of

Stand Off = Inches	0
Cartridge No.	F
Panel No.	F
Sonde No.	M
IAP-D No.	107
SBR	2

MUD SAMPLES:  
 RM#1 = (11:20) 2.49 @ 64°F = 1.33 @ 120°F (BHT)  
 RM#2 = (11:35) 2.42 @ 64°F = 1.29 @ 120°F (BHT)  
 RM#3 = (11:50) 2.45 @ 64°F = 1.31 @ 120°F (BHT)



1 of

RESISTIVITY  
ohms m<sup>2</sup>/m

16" NORMAL

0 50

0 500

INDUCTION

0 50

0 500

Ca<sup>2+</sup> ←

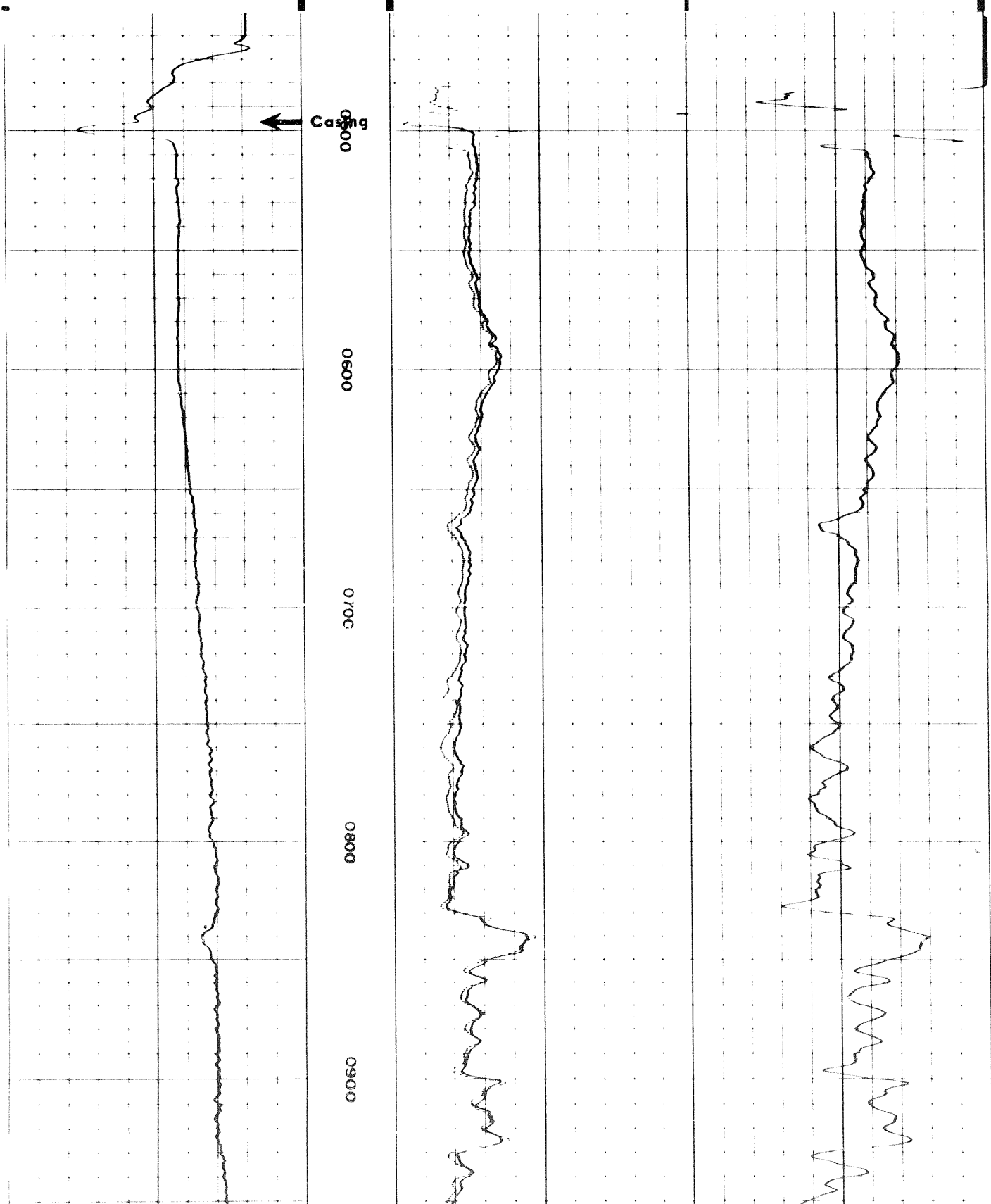
0050

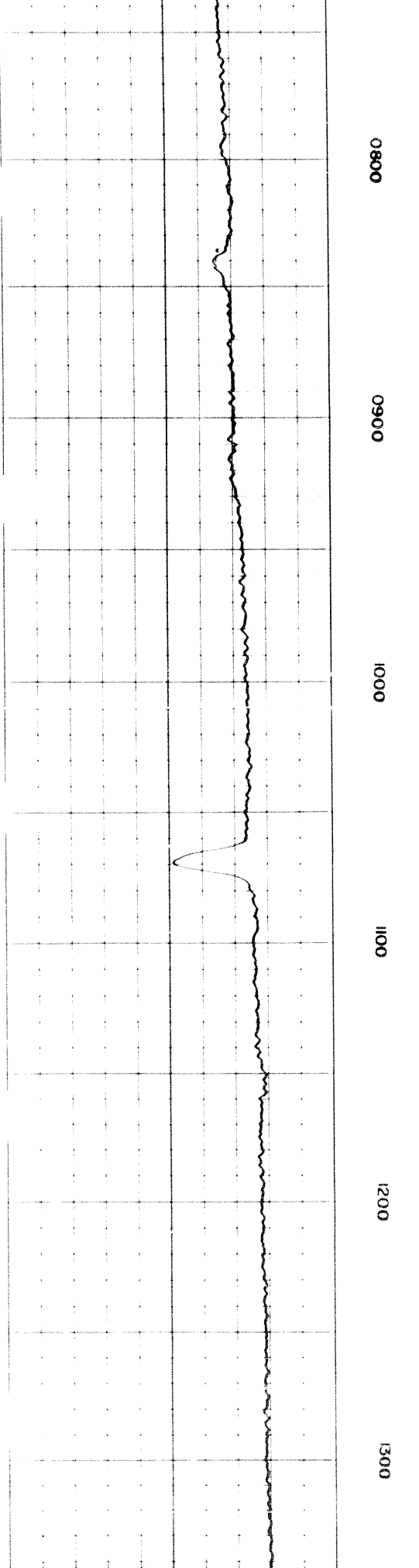
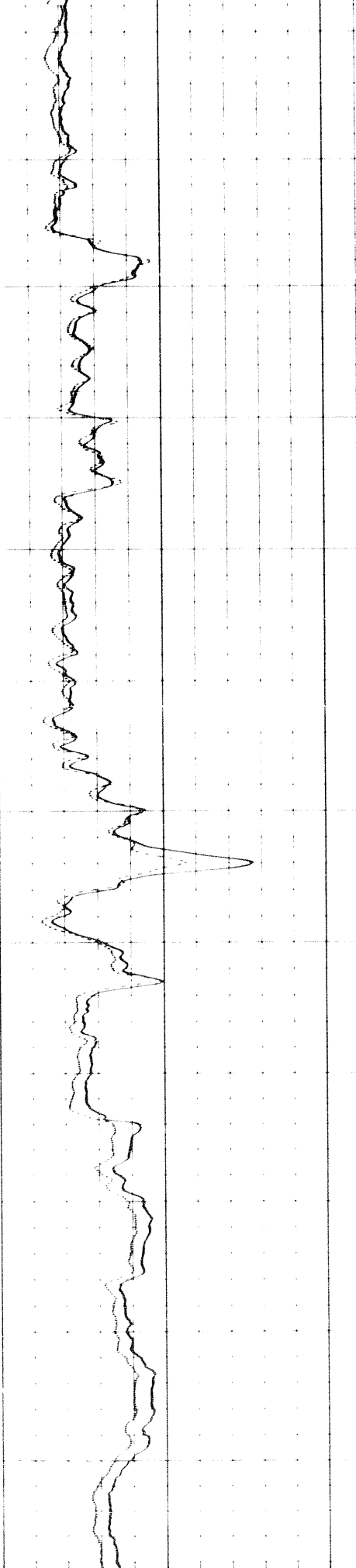
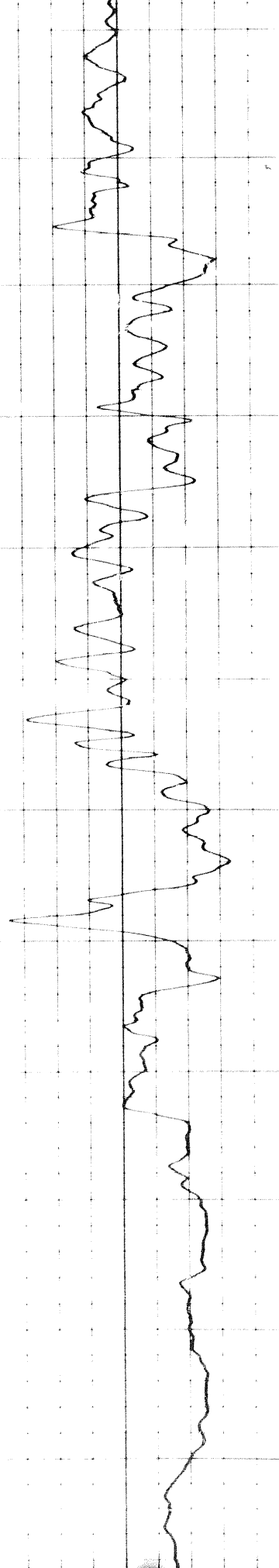
0090

0700

0880

0960





0800

0900

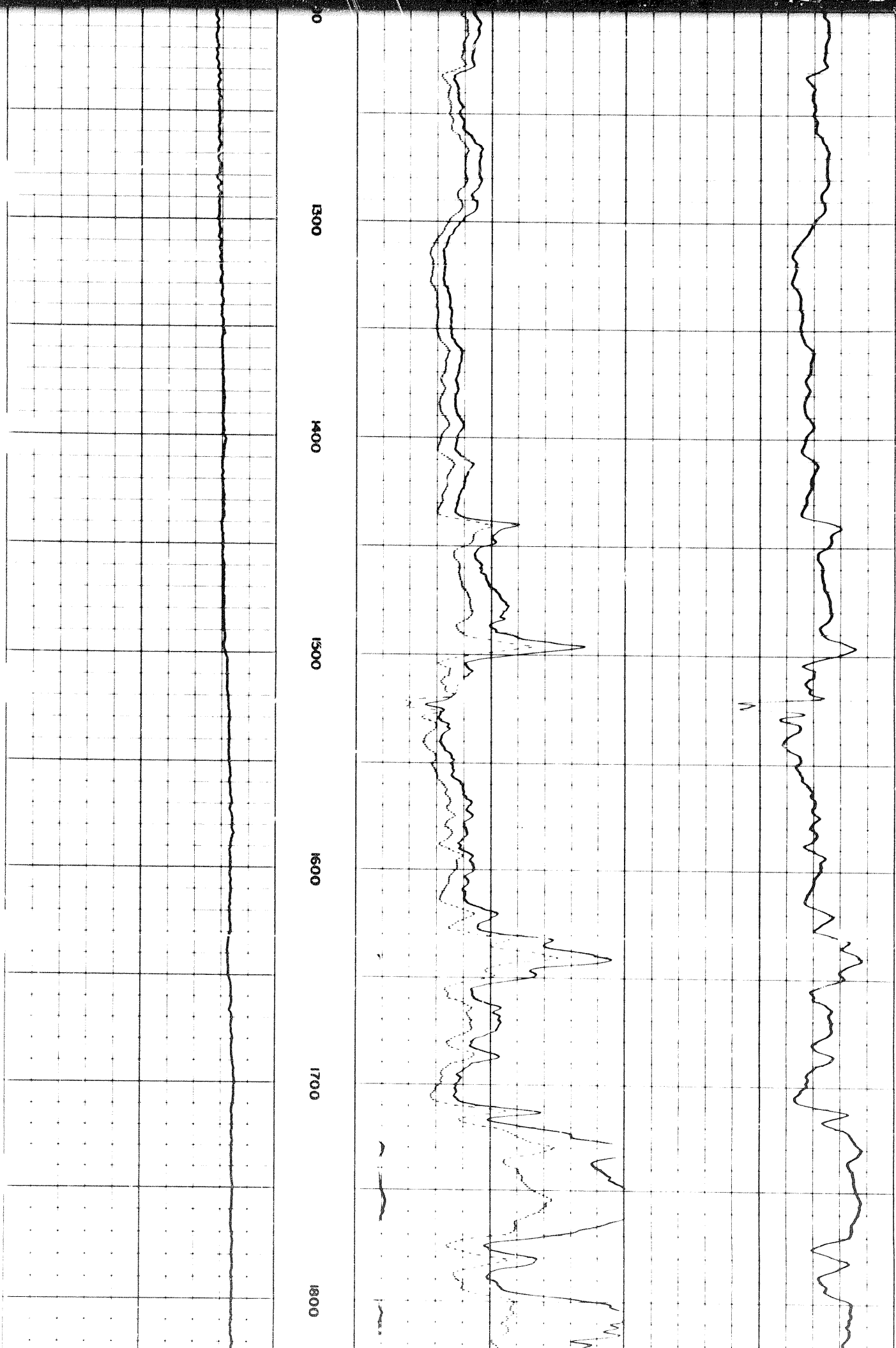
1000

1100

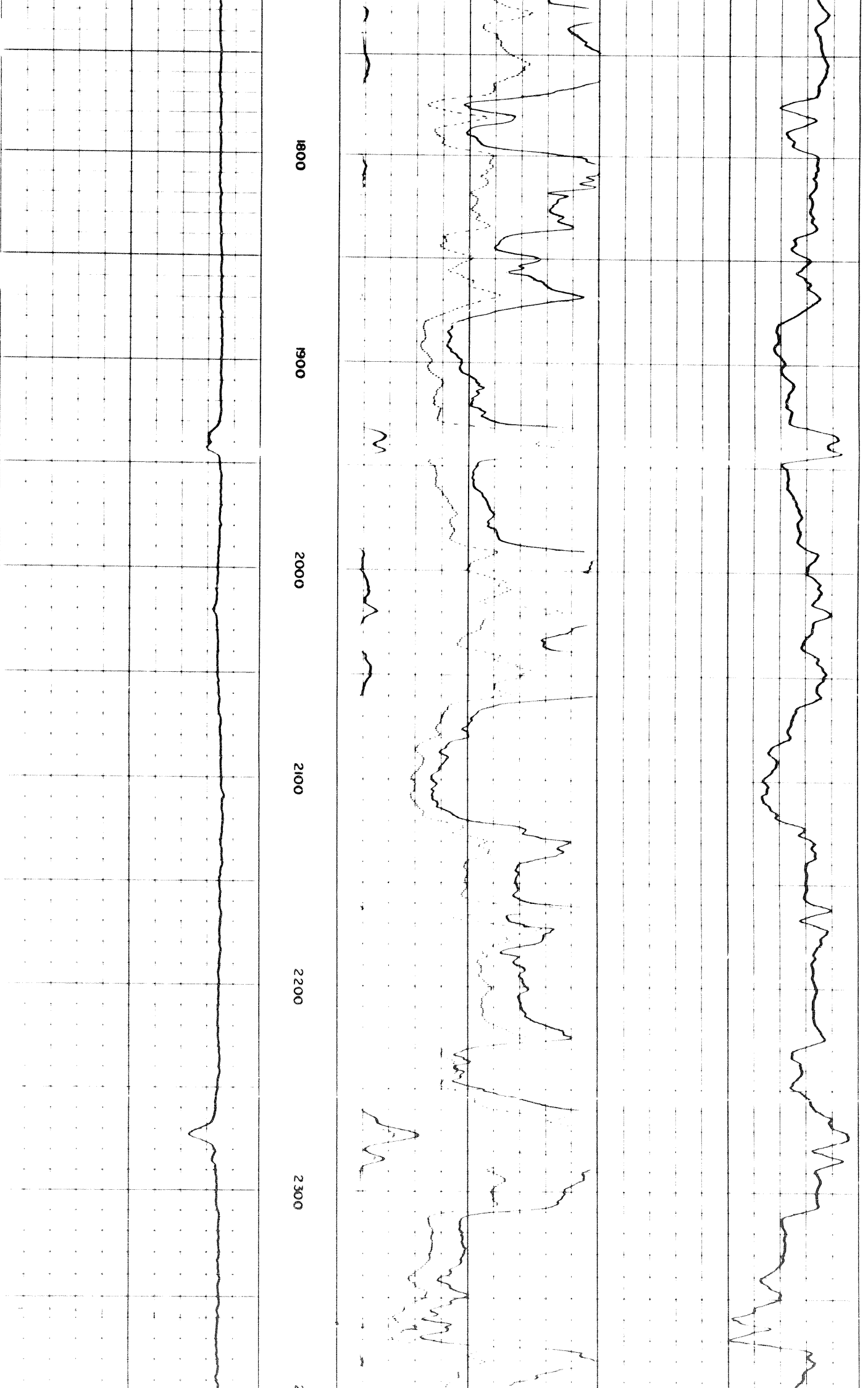
1200

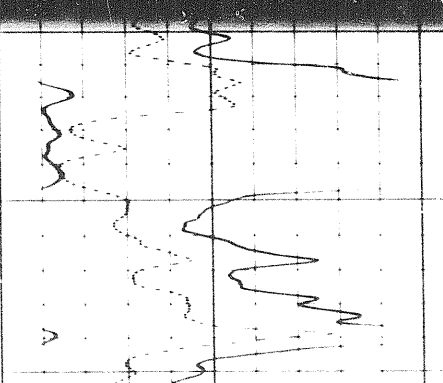
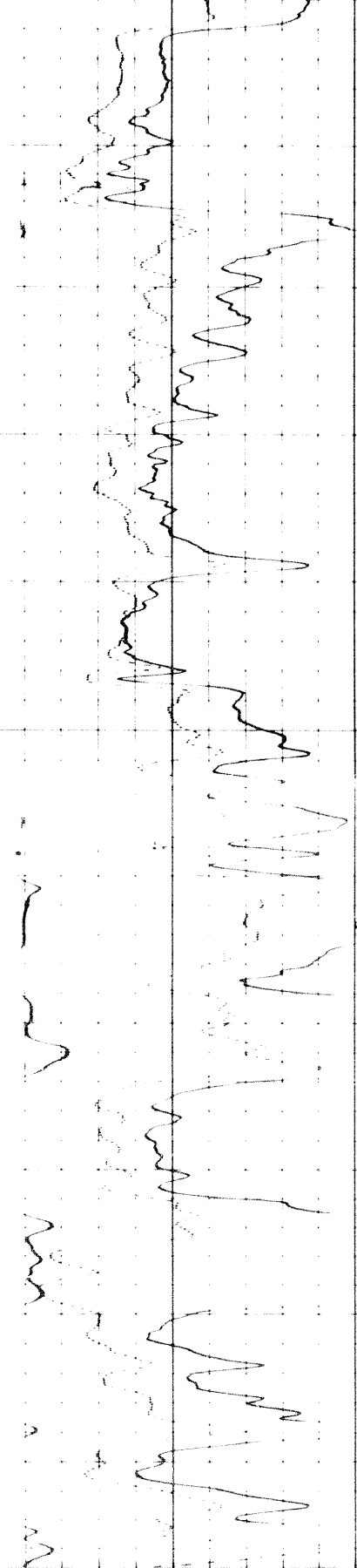
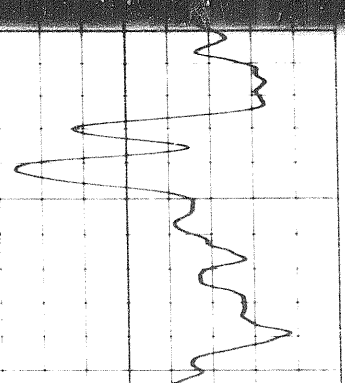
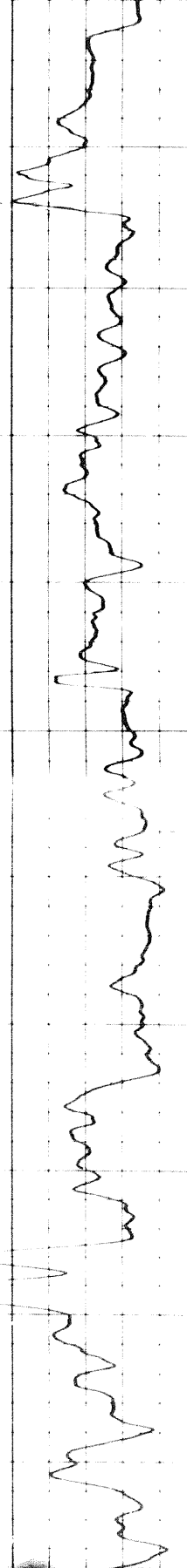
1300

706









00

2400

2500

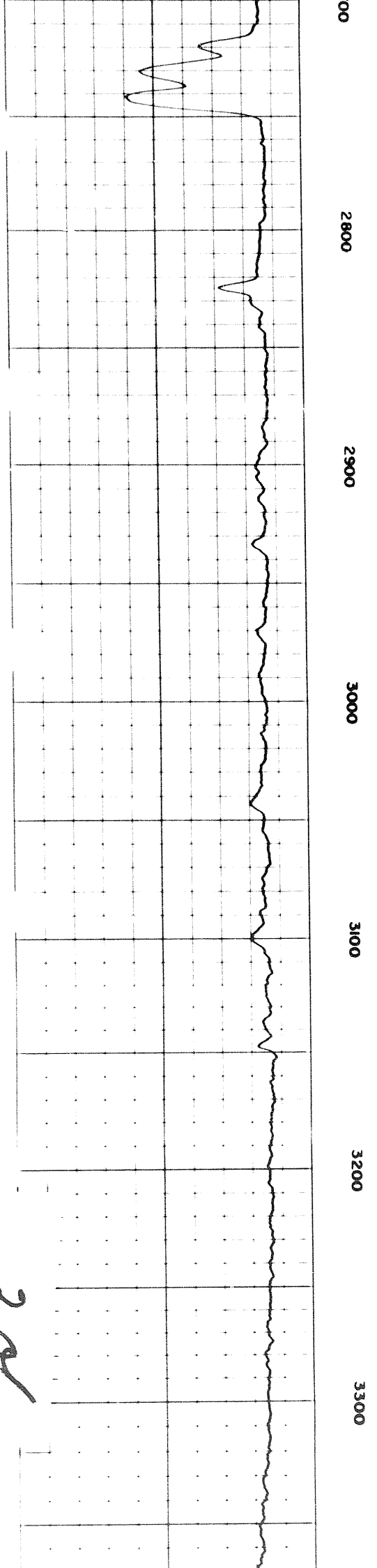
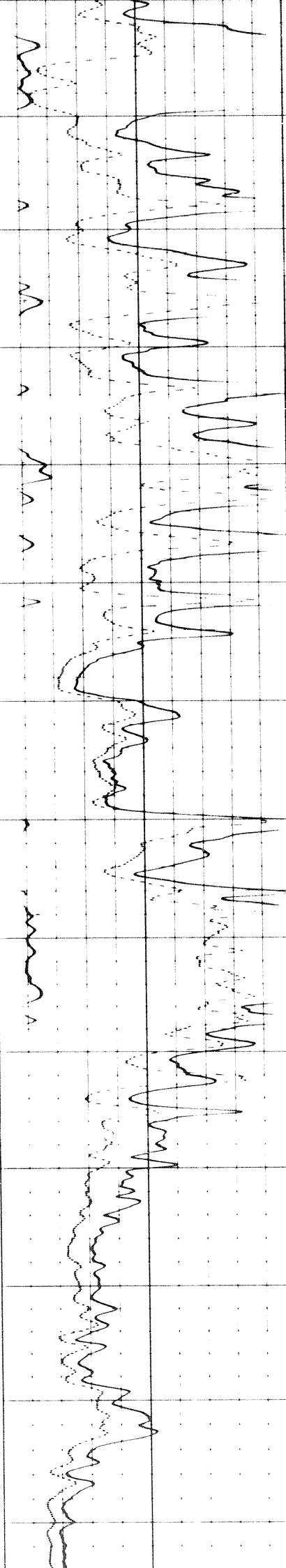
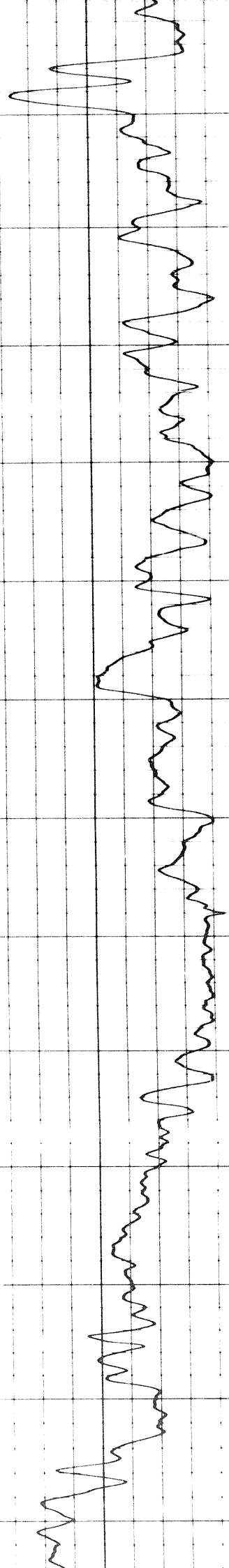
2600

2700

2800

700

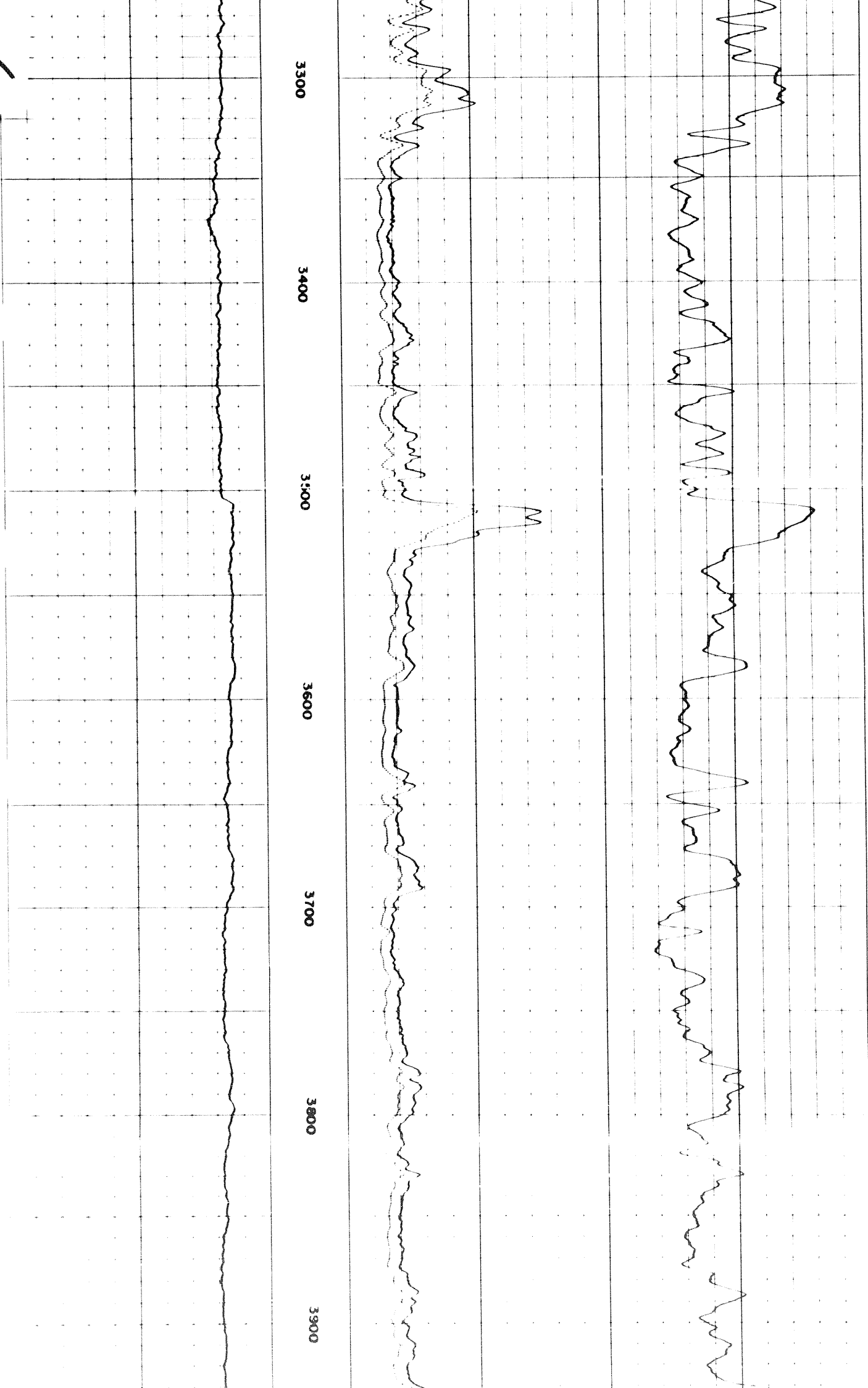
280



00 2800 2900 3000 3100 3200 3300

3 of

2



3900

FR  
4000

0 500  
0 50

INDUCTION

0 500

16" NORMAL

RESISTIVITY  
ohms m/m

Speed in FPM

20

500

400

400

200  
INDUCTION

0

SPONTANEOUS - POTENTIAL  
millivolts

DEPTHS

CONDUCTIVITY  
 $\text{millimhos/m} = \frac{1000}{\text{ohms m/m}}$

DETAIL LOG  
5" = 100'

SPONTANEOUS - POTENTIAL  
millivolts

DEPTHS

CONDUCTIVITY  
 $\text{millimhos/m} = \frac{1000}{\text{ohms m/m}}$

20

600

400

400

200  
INDUCTION

0

SPONTANEOUS - POTENTIAL  
millivolts

DEPTHS

CONDUCTIVITY  
 $\text{millimhos/m} = \frac{1000}{\text{ohms m/m}}$

DETAIL LOG  
5" = 100'

SPONTANEOUS - POTENTIAL

DEP

CONDUCTIVITY  
1000

Speed in FPM



SPONTANEOUS - POTENTIAL  
millivolts

DEPTHS

CONDUCTIVITY  
millimhos/m =  $\frac{1000}{\text{ohms m}^2/\text{m}}$

DETAIL LOG  
5" = 100'

SPONTANEOUS - POTENTIAL  
millivolts

DEPTHS

CONDUCTIVITY  
millimhos/m =  $\frac{1000}{\text{ohms m}^2/\text{m}}$

INDUCTION

400 200 0  
600 400

RESISTIVITY  
ohms m<sup>2</sup>/m

16" NORMAL

0 50

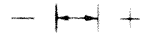
0 500

INDUCTION

0 50

0 500

20

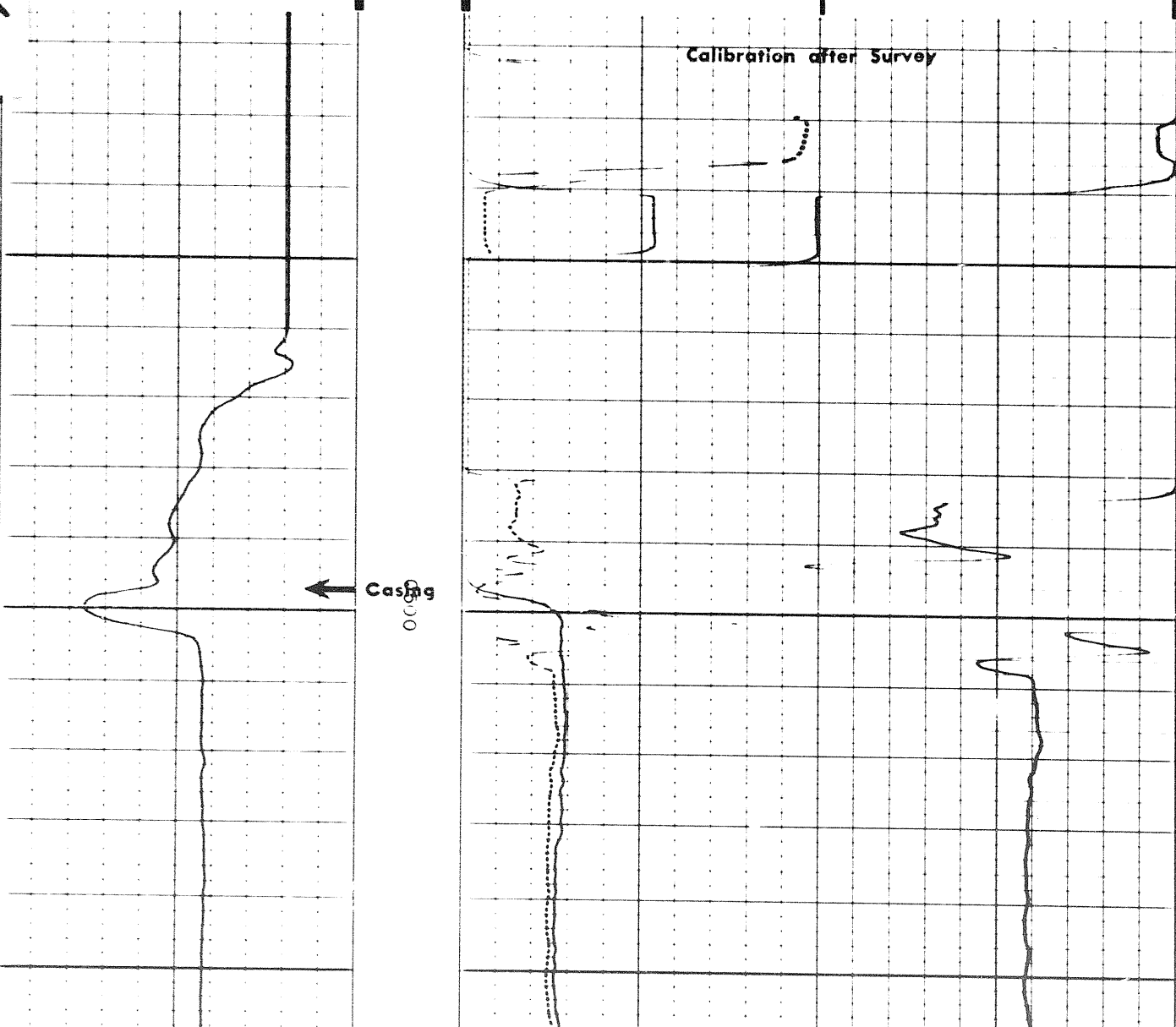


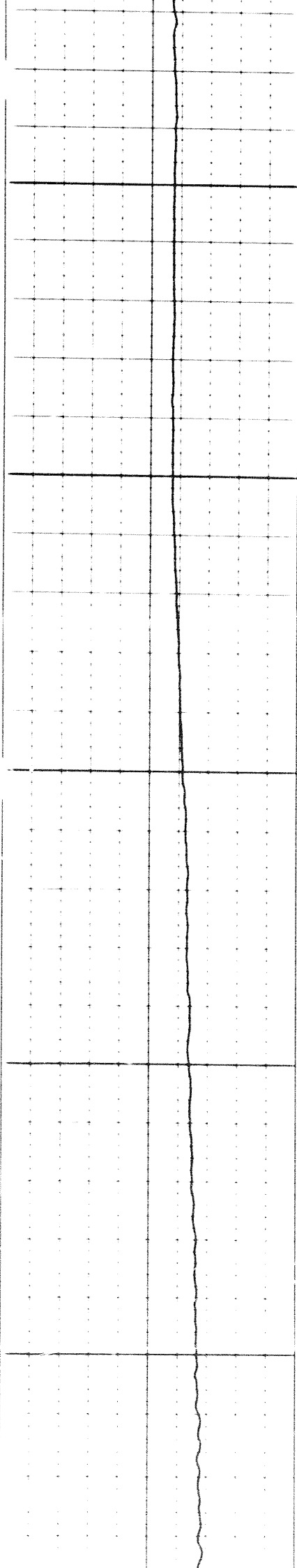
Speed in FPM

4 of 7

Calibration after Survey

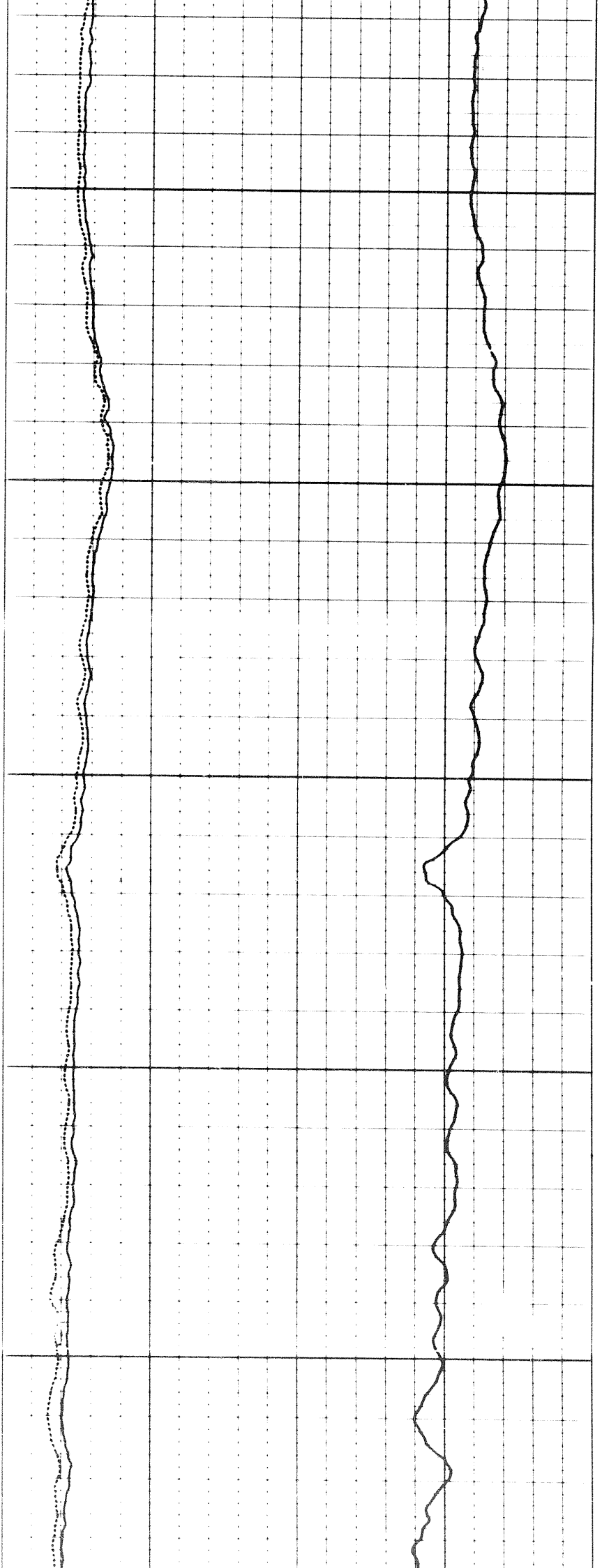
Casing  
0000





009

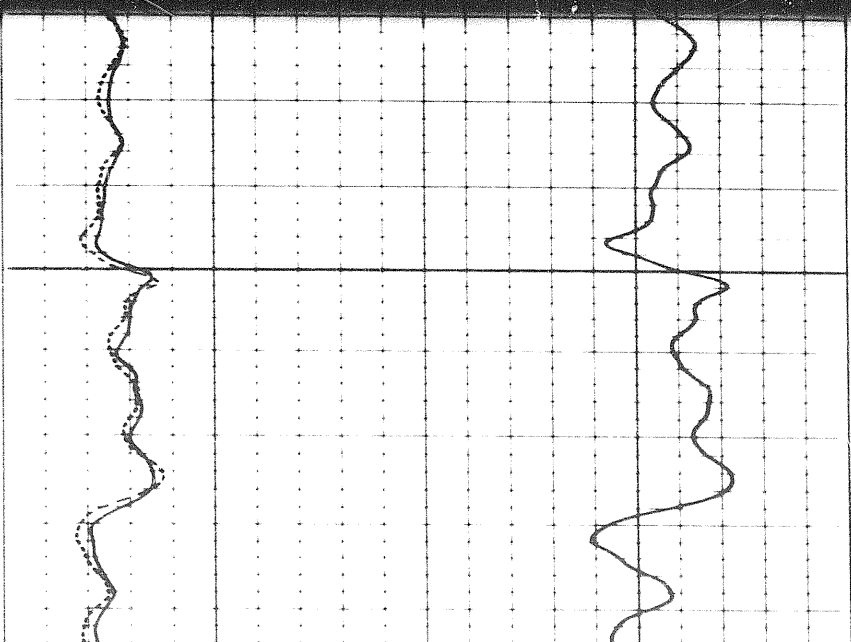
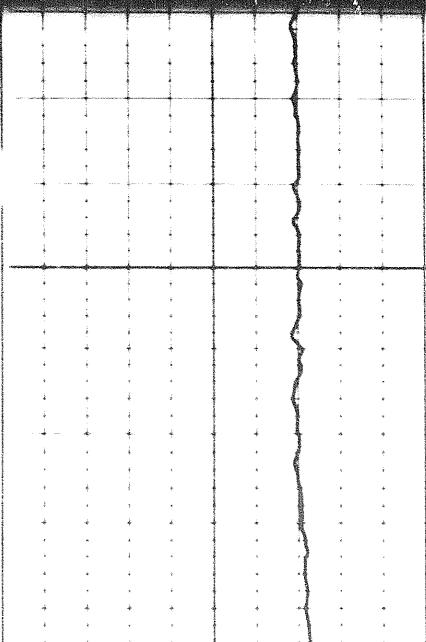
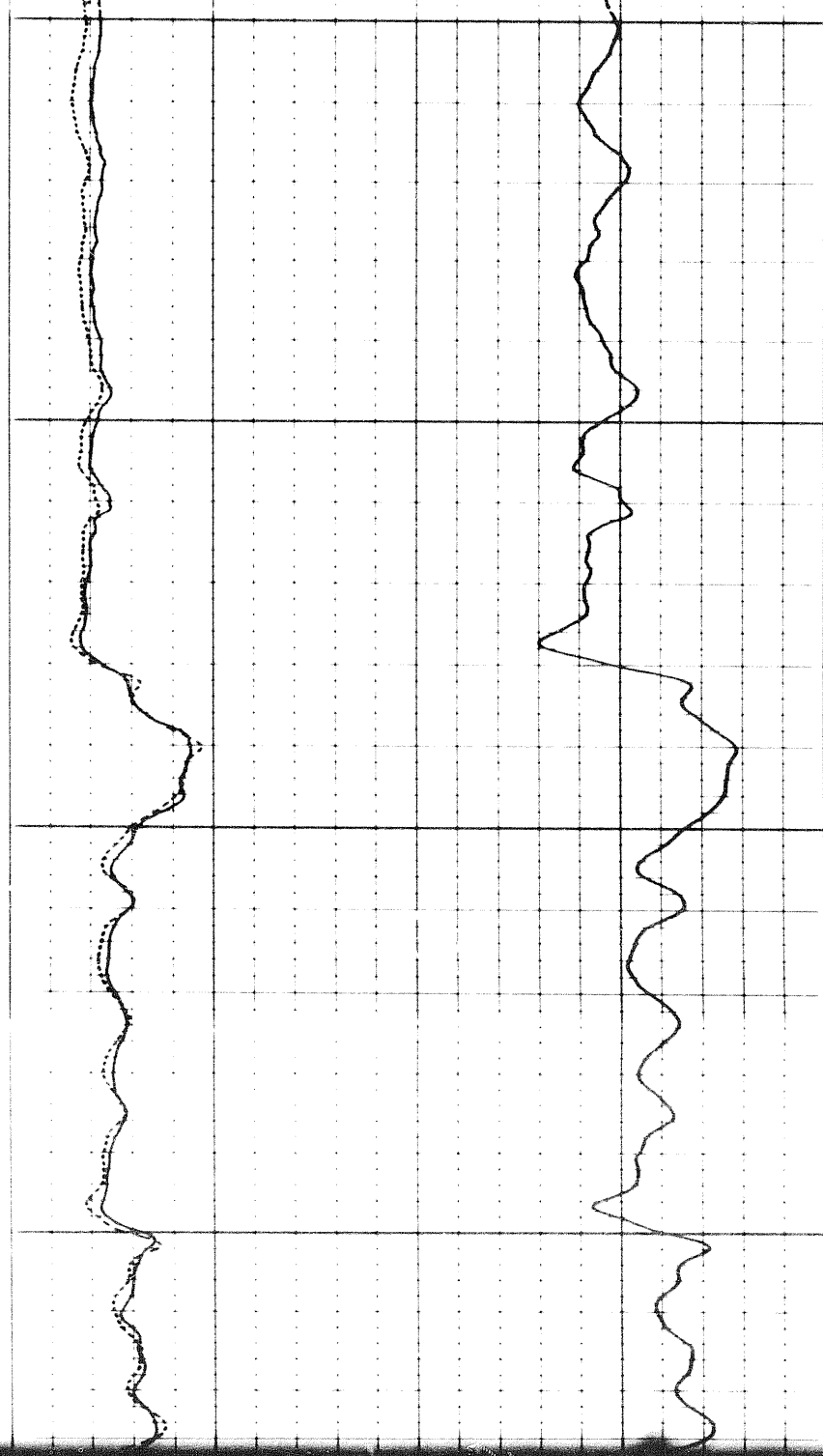
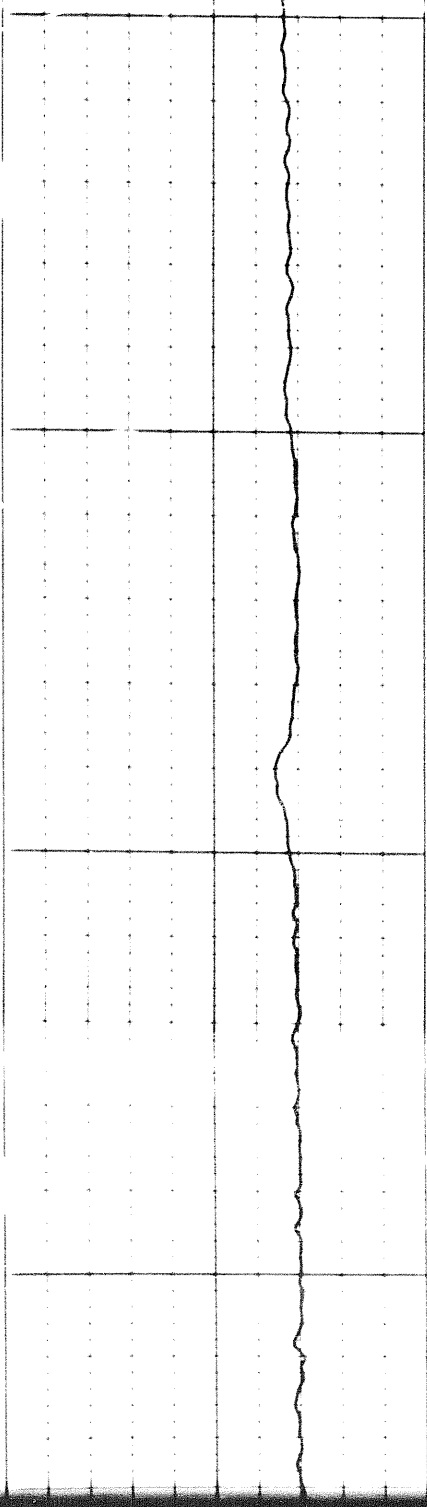
0700



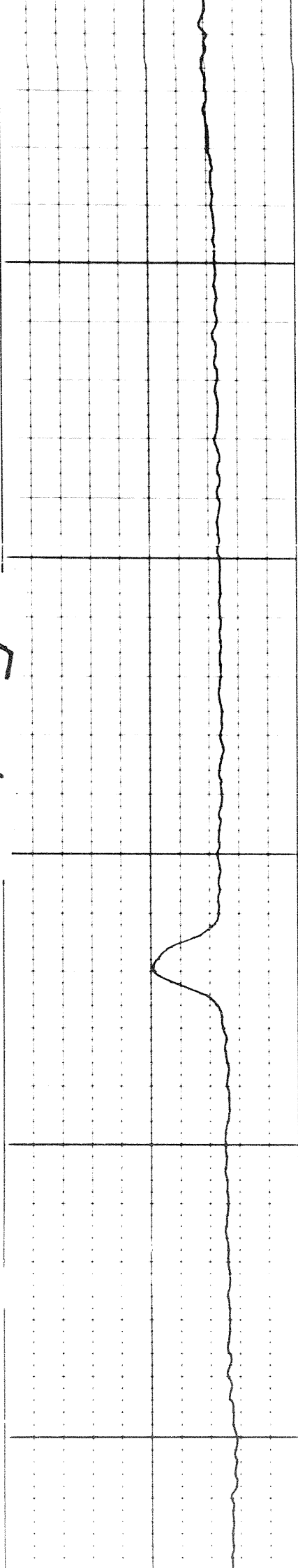
0080

0060

0060

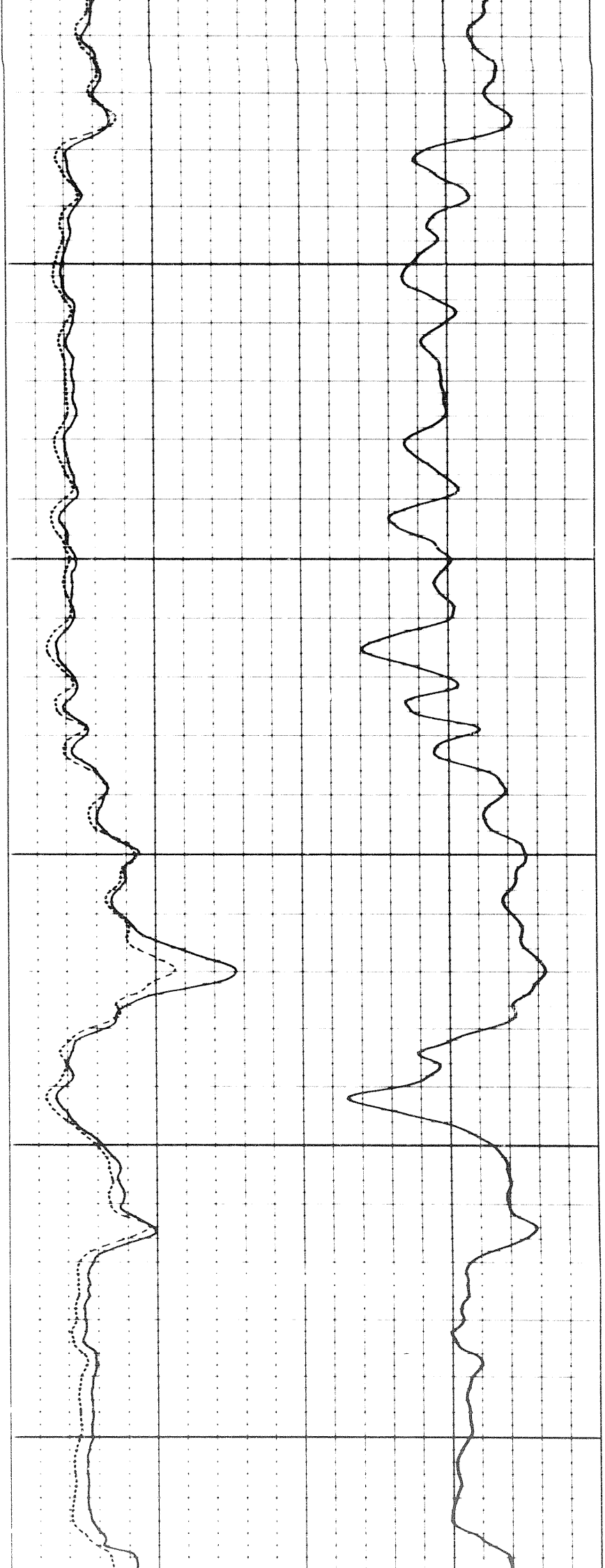


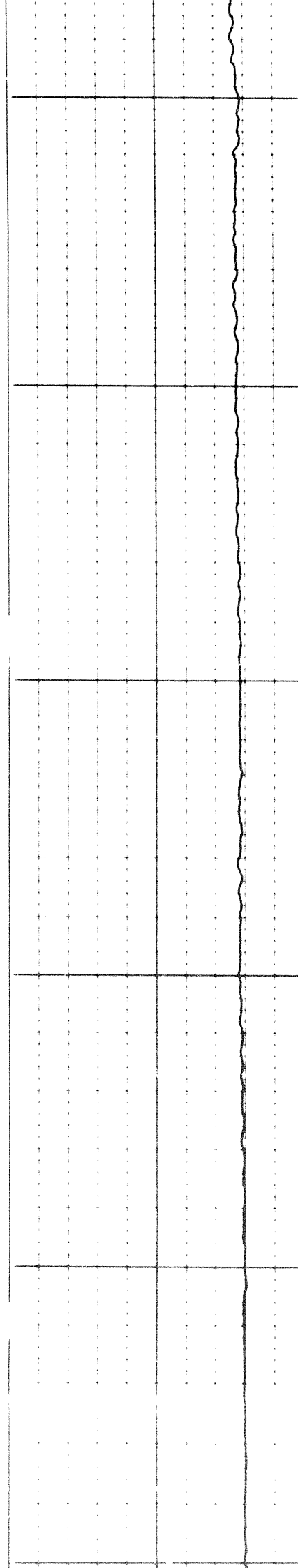
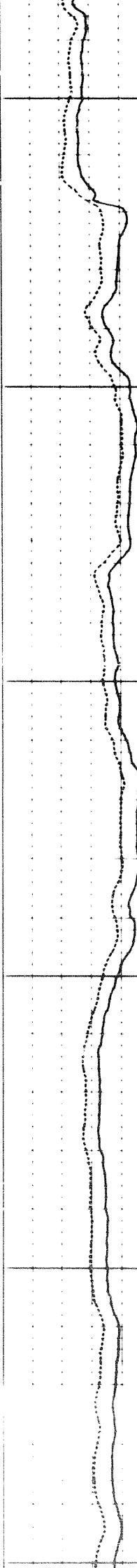
5 of



1000

1100





1200

1300

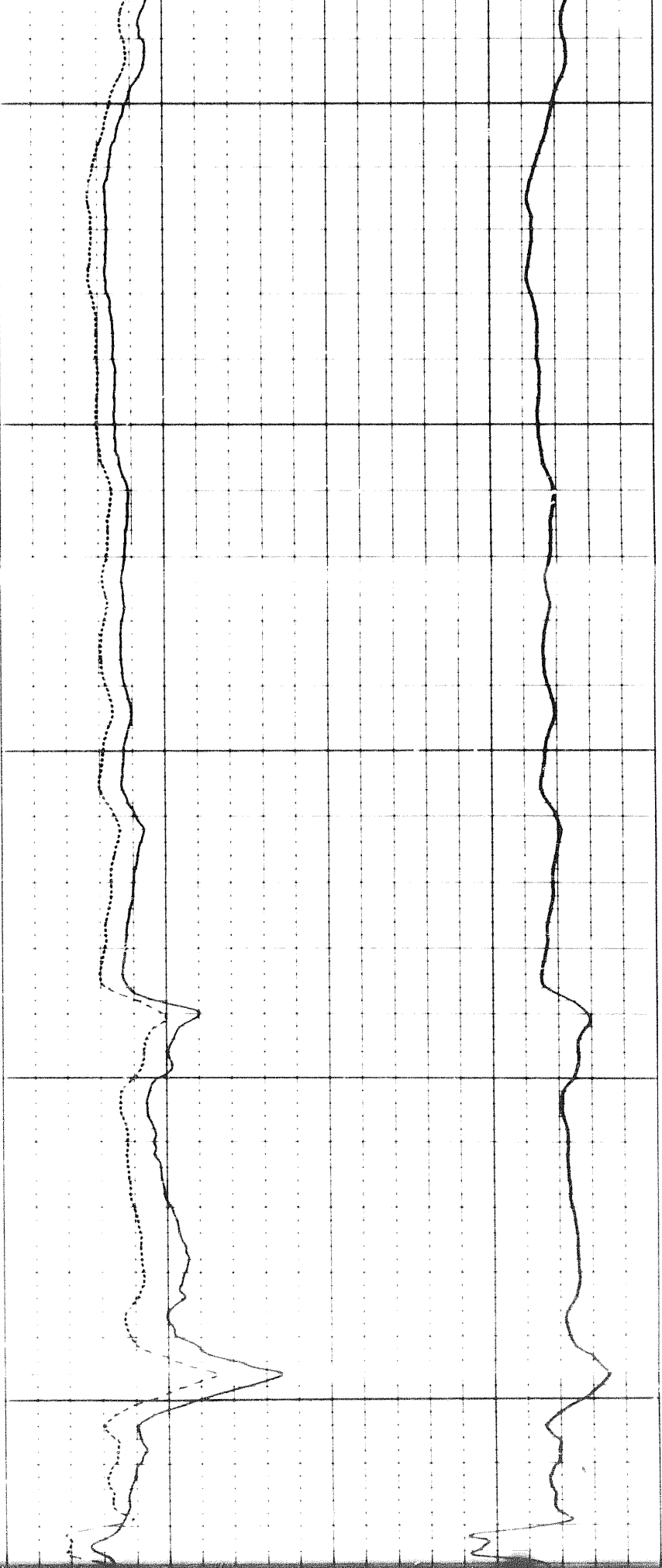
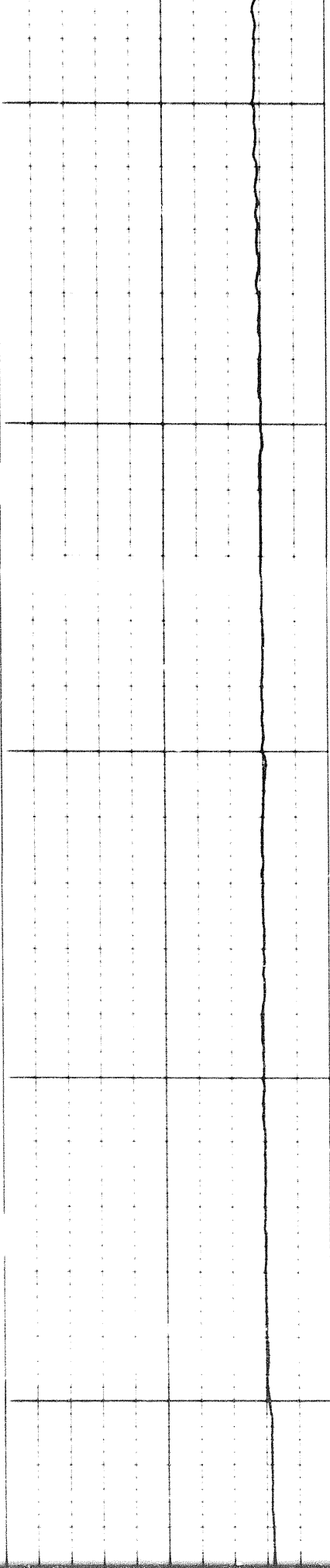
1400



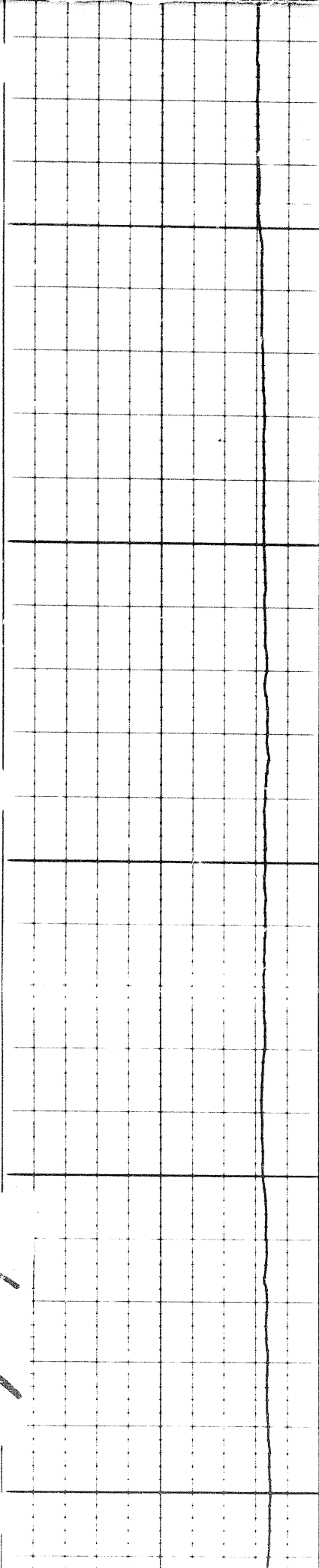
1300

1400

1500



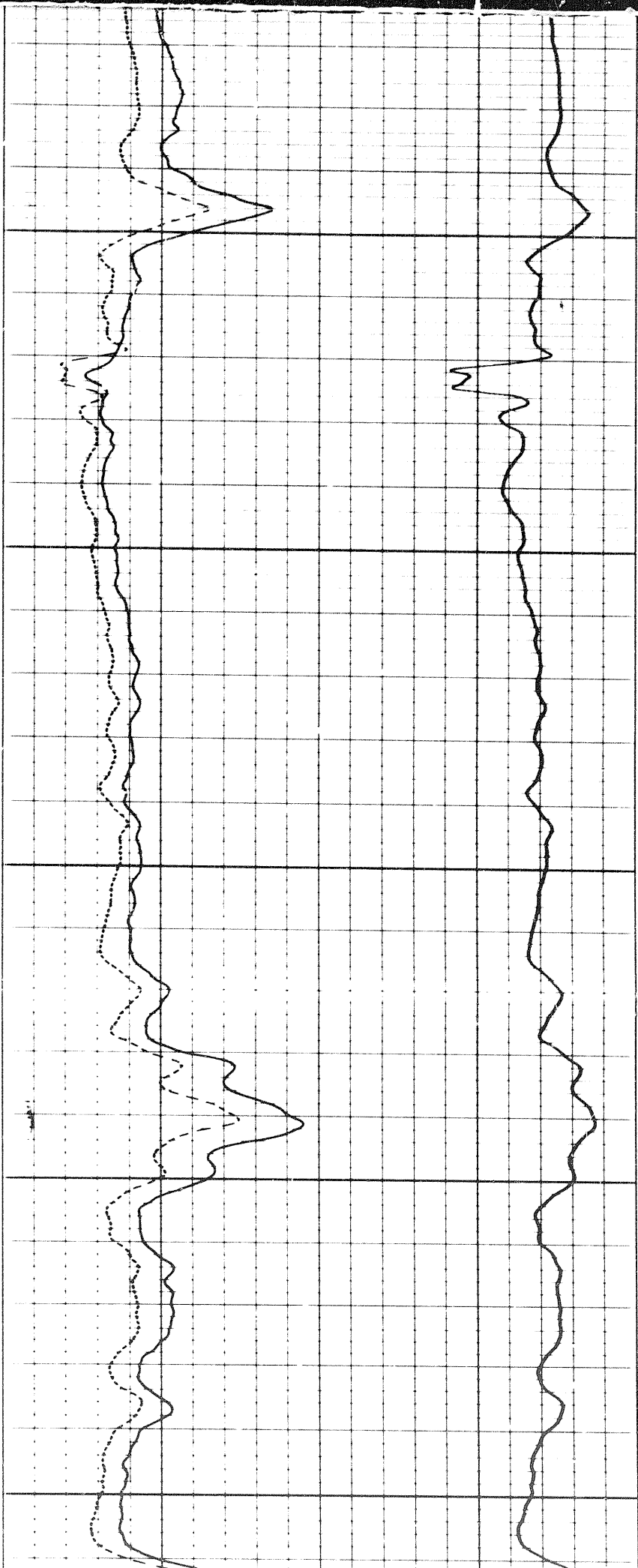
6 of



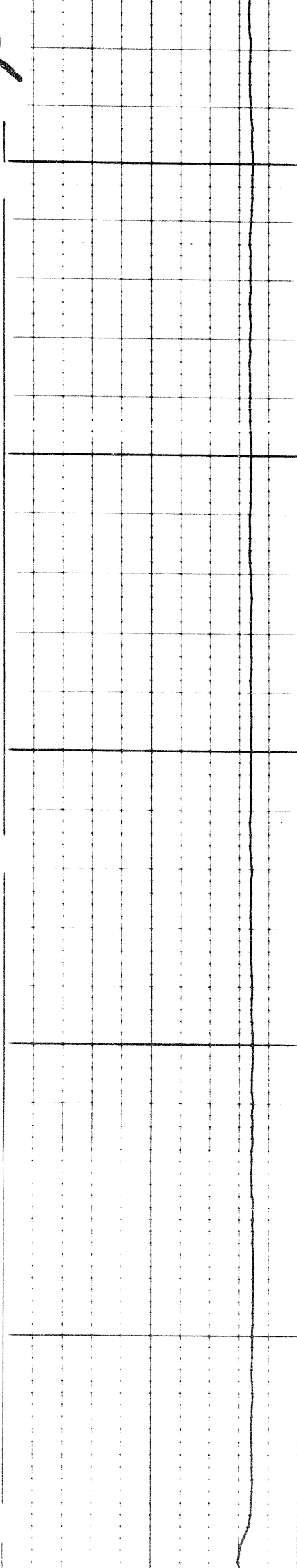
1500

1600

1700



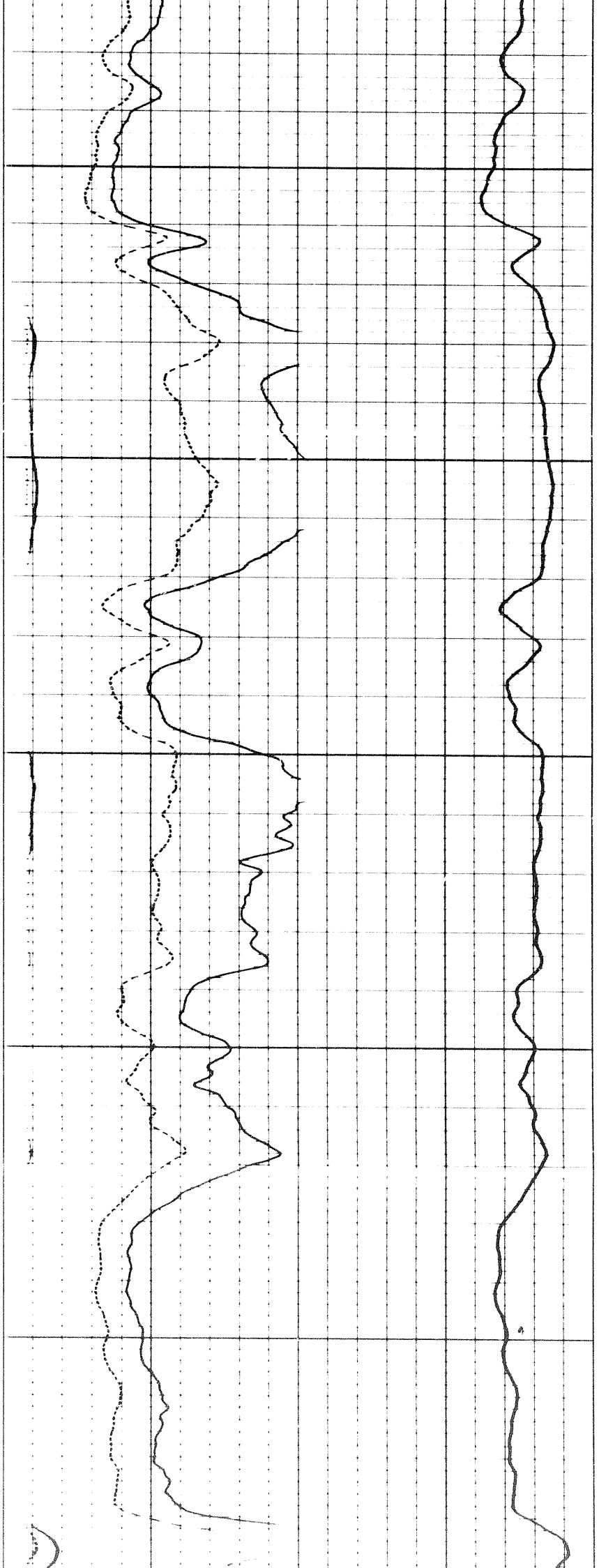
of

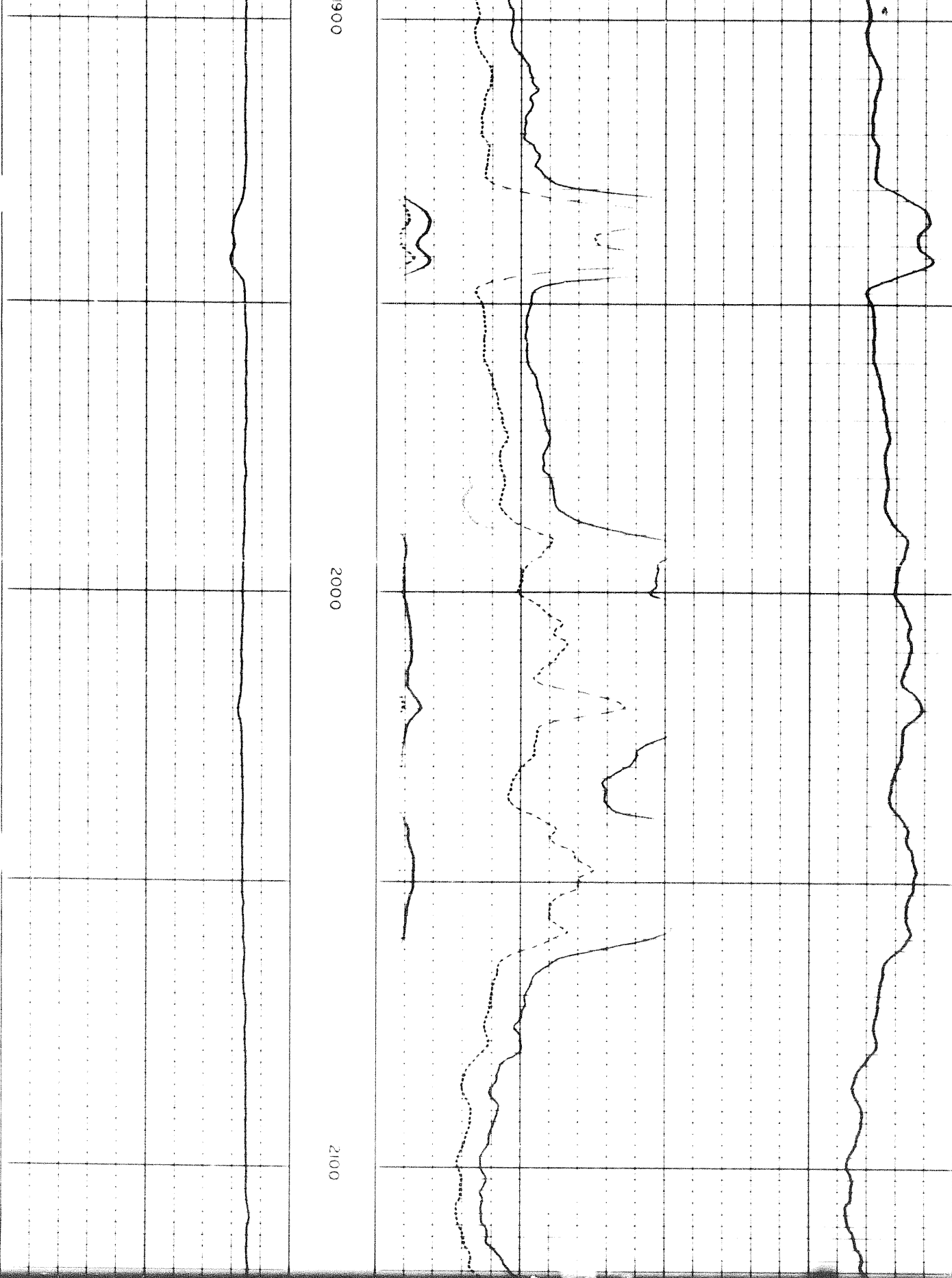


1700

1800

1900

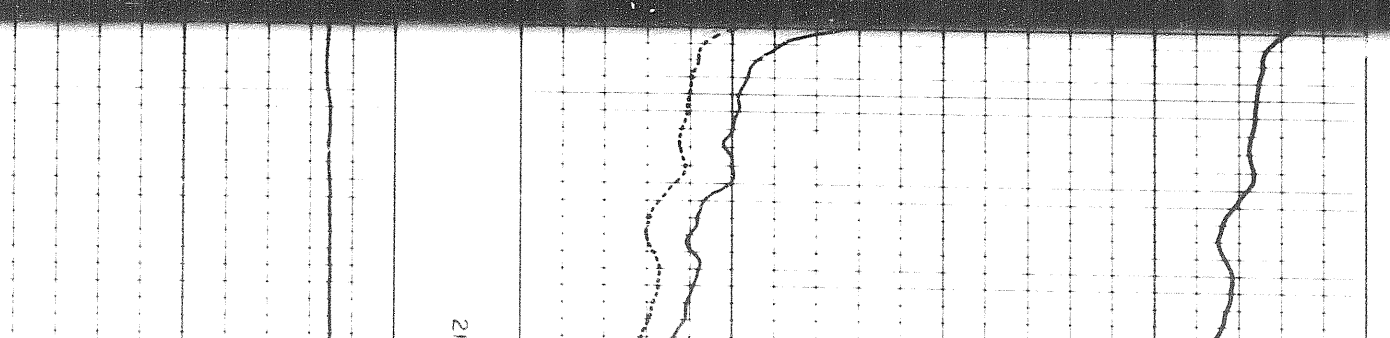




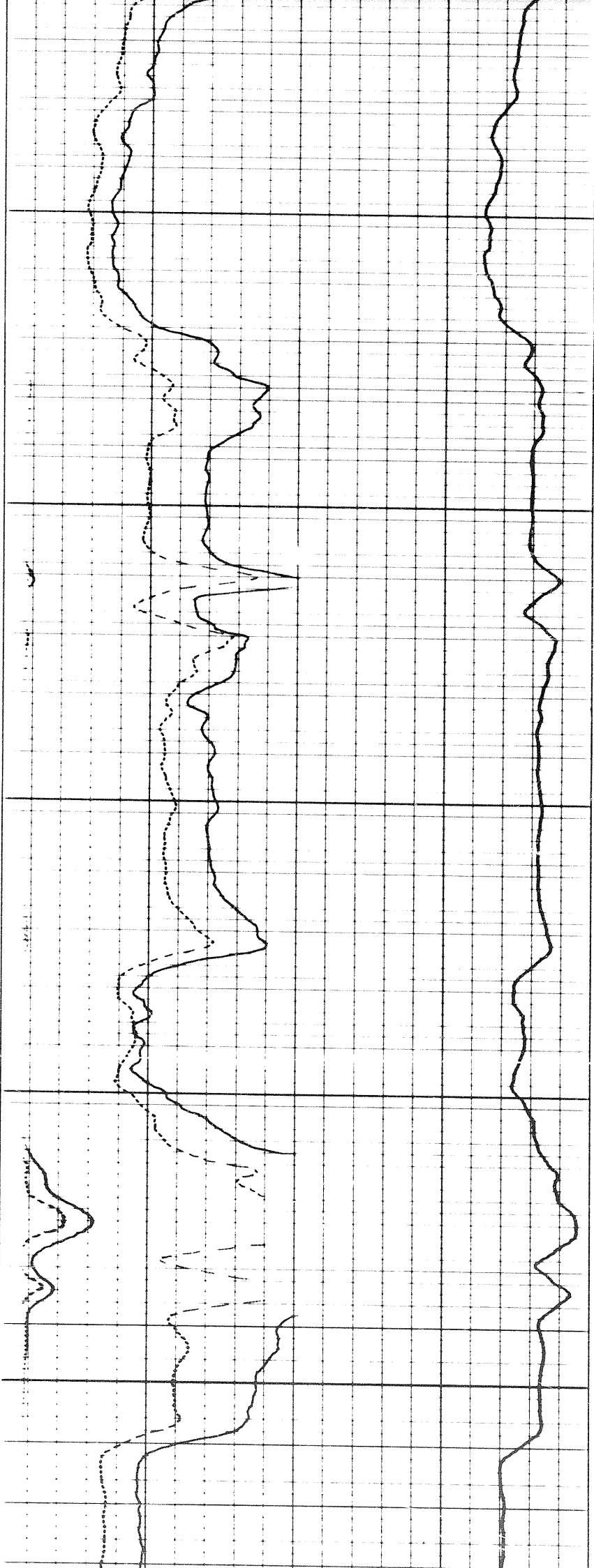
900

2000

2100



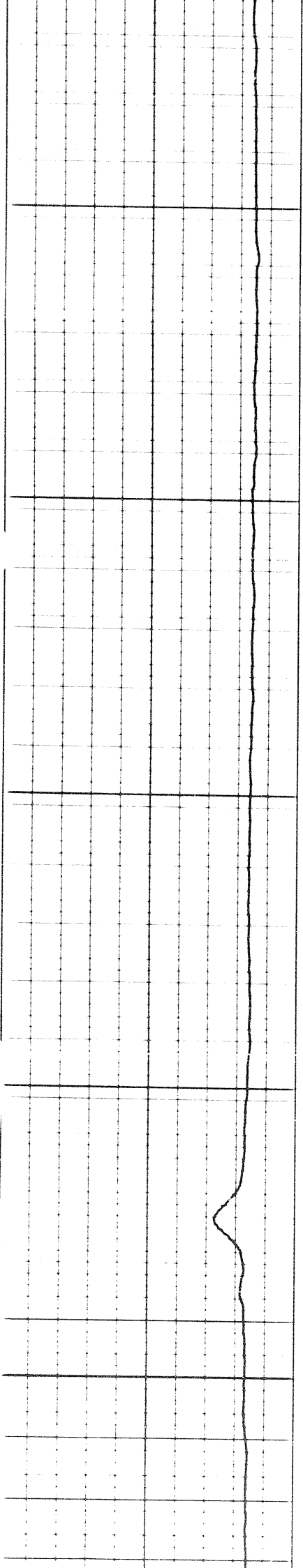
21



2100

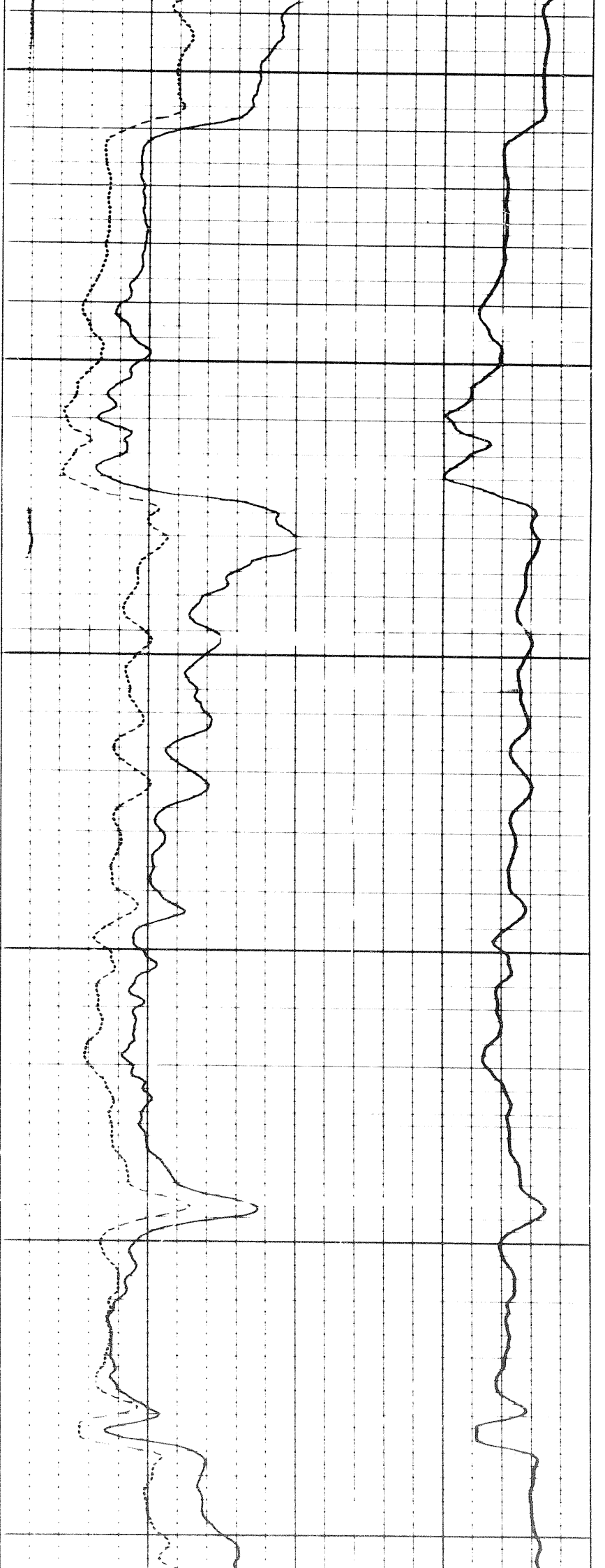
2200

2300



70

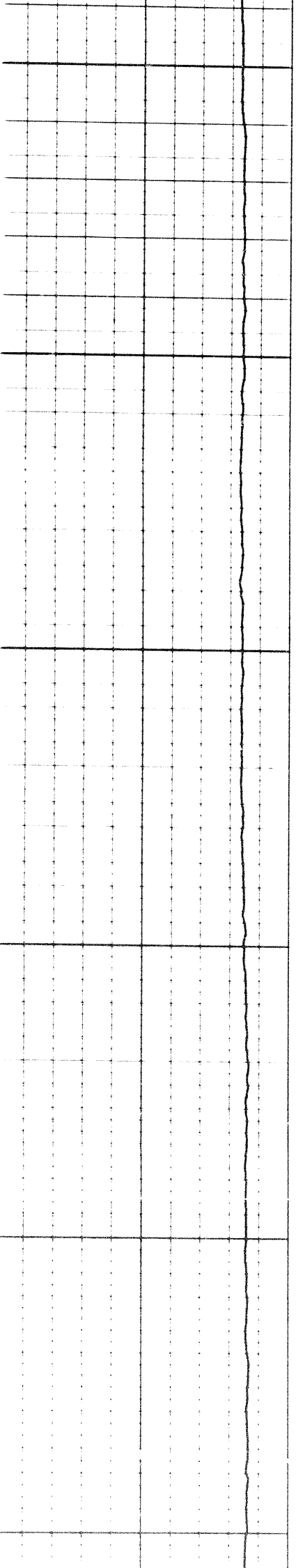


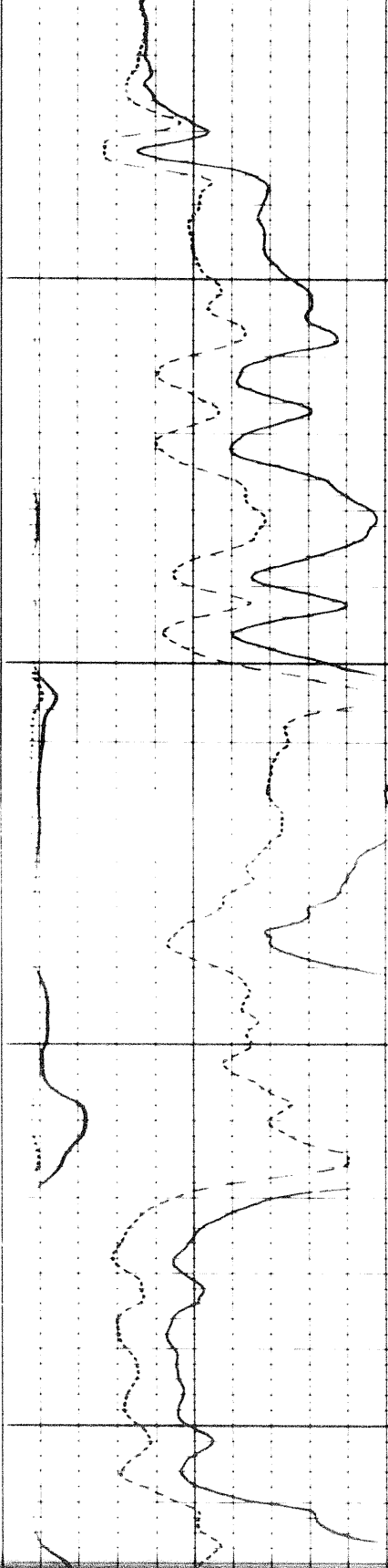
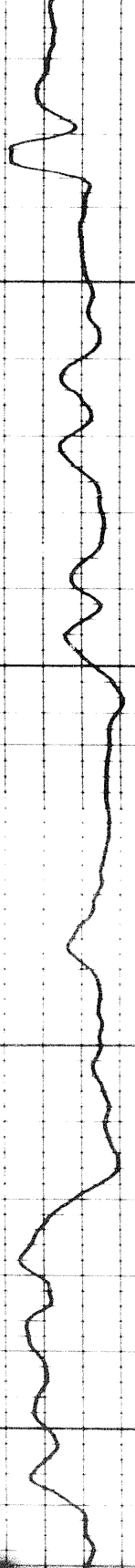


2300

2400

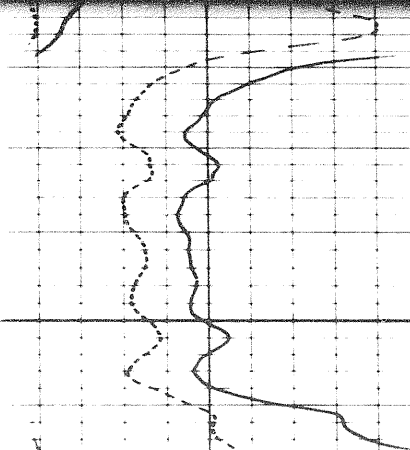
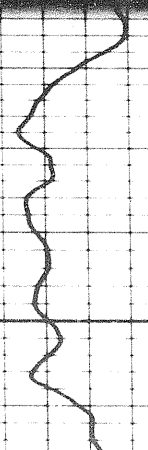
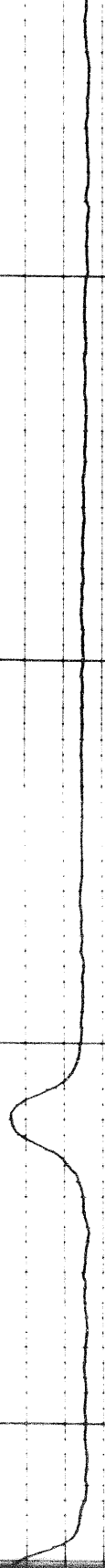
2500



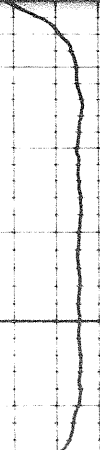


2600

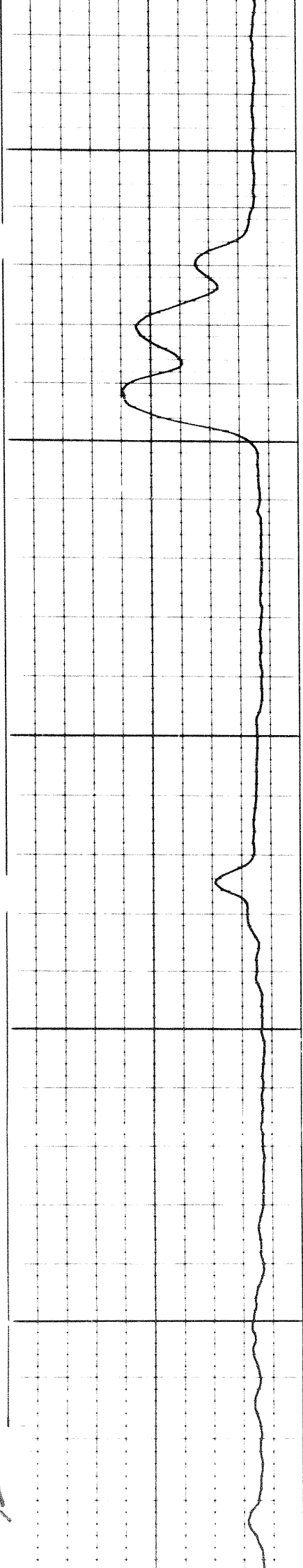
2700



2700



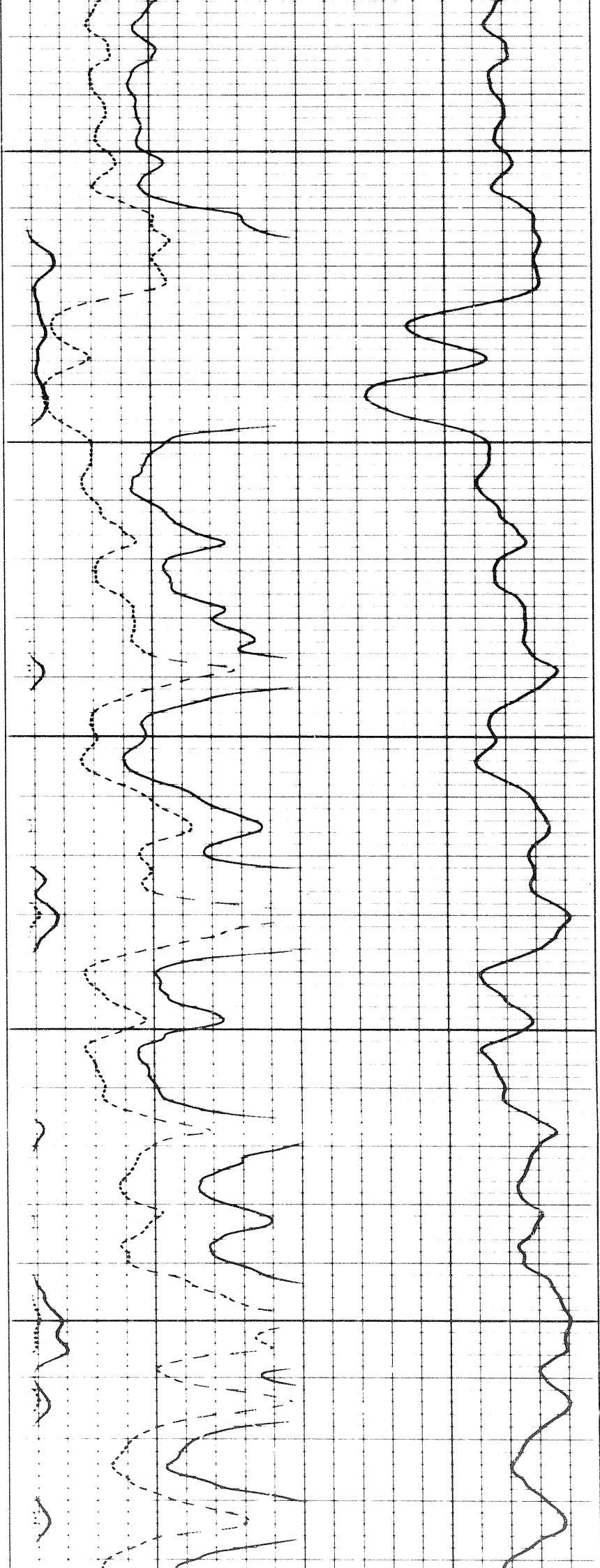
809



2700

2800

2900

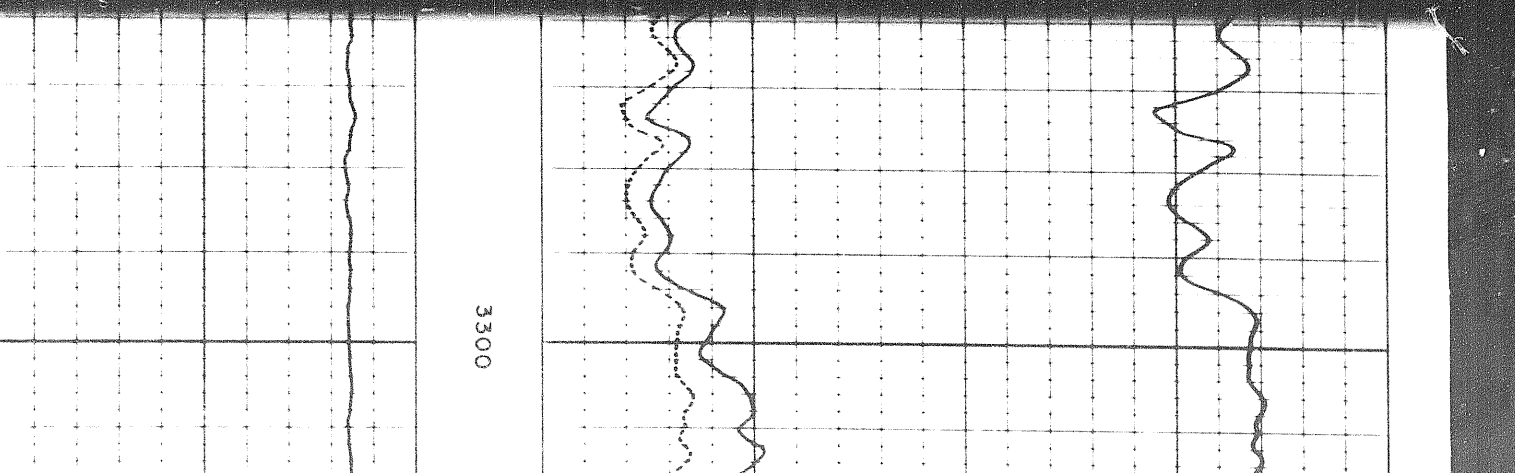
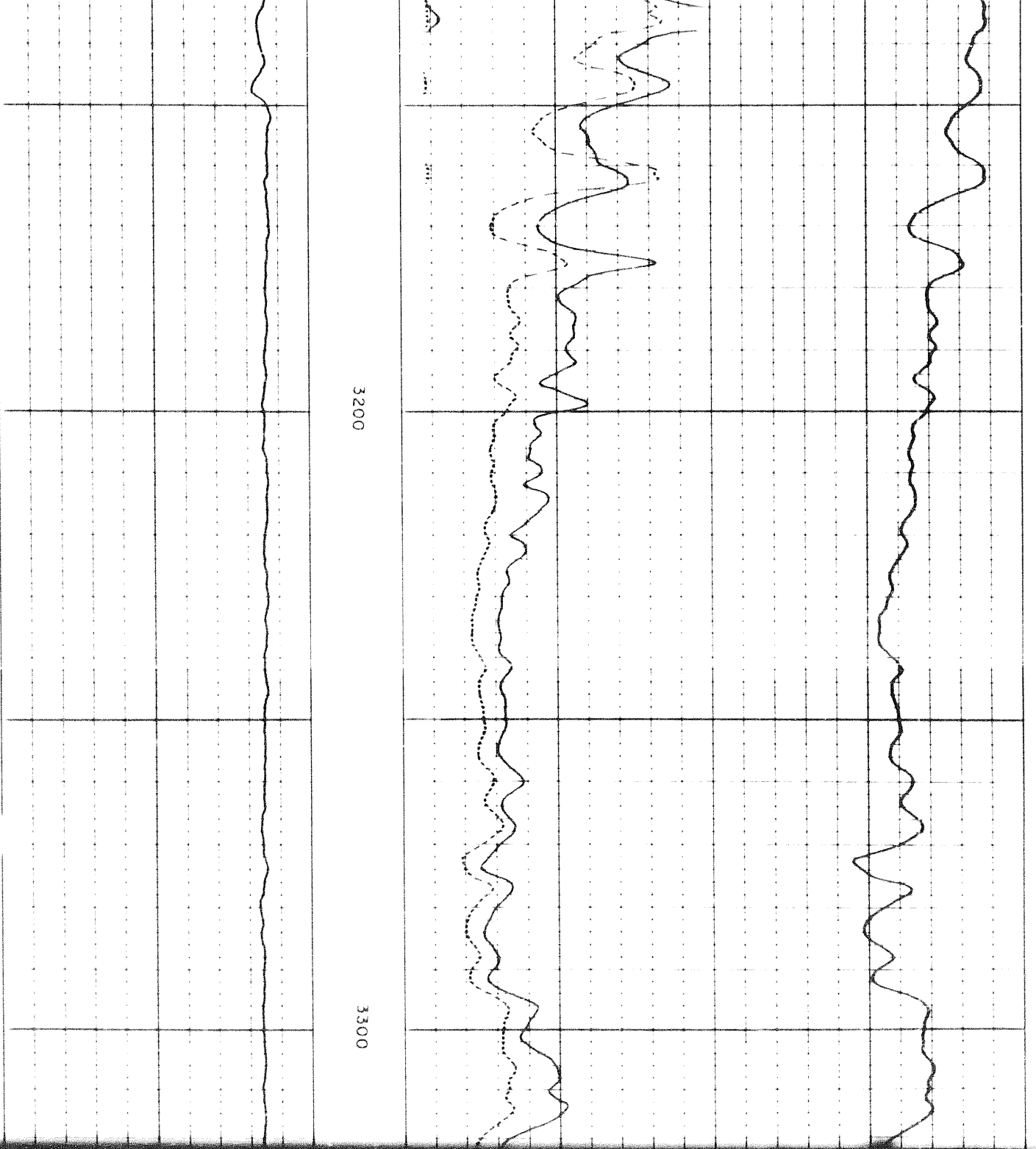


897



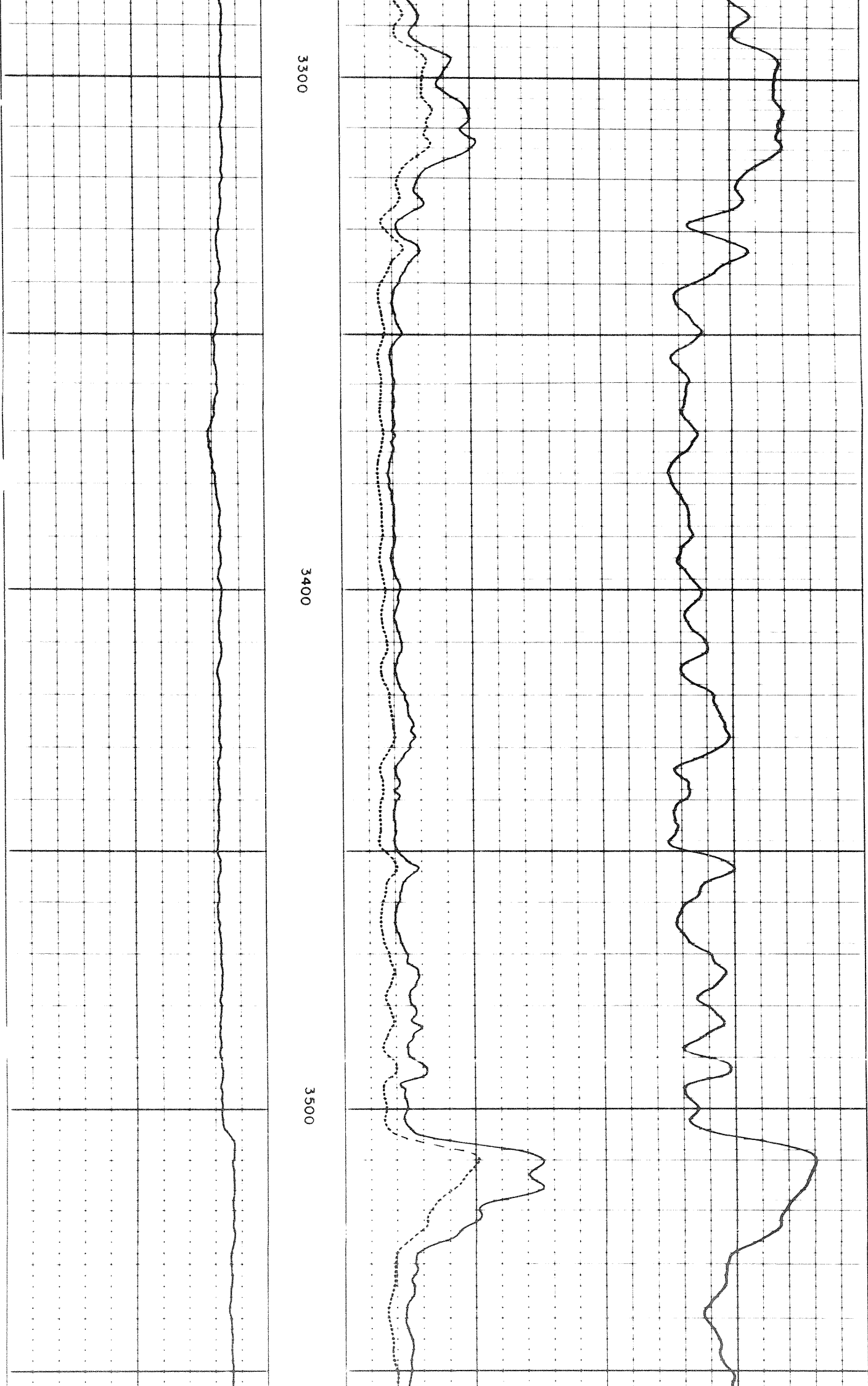
3000

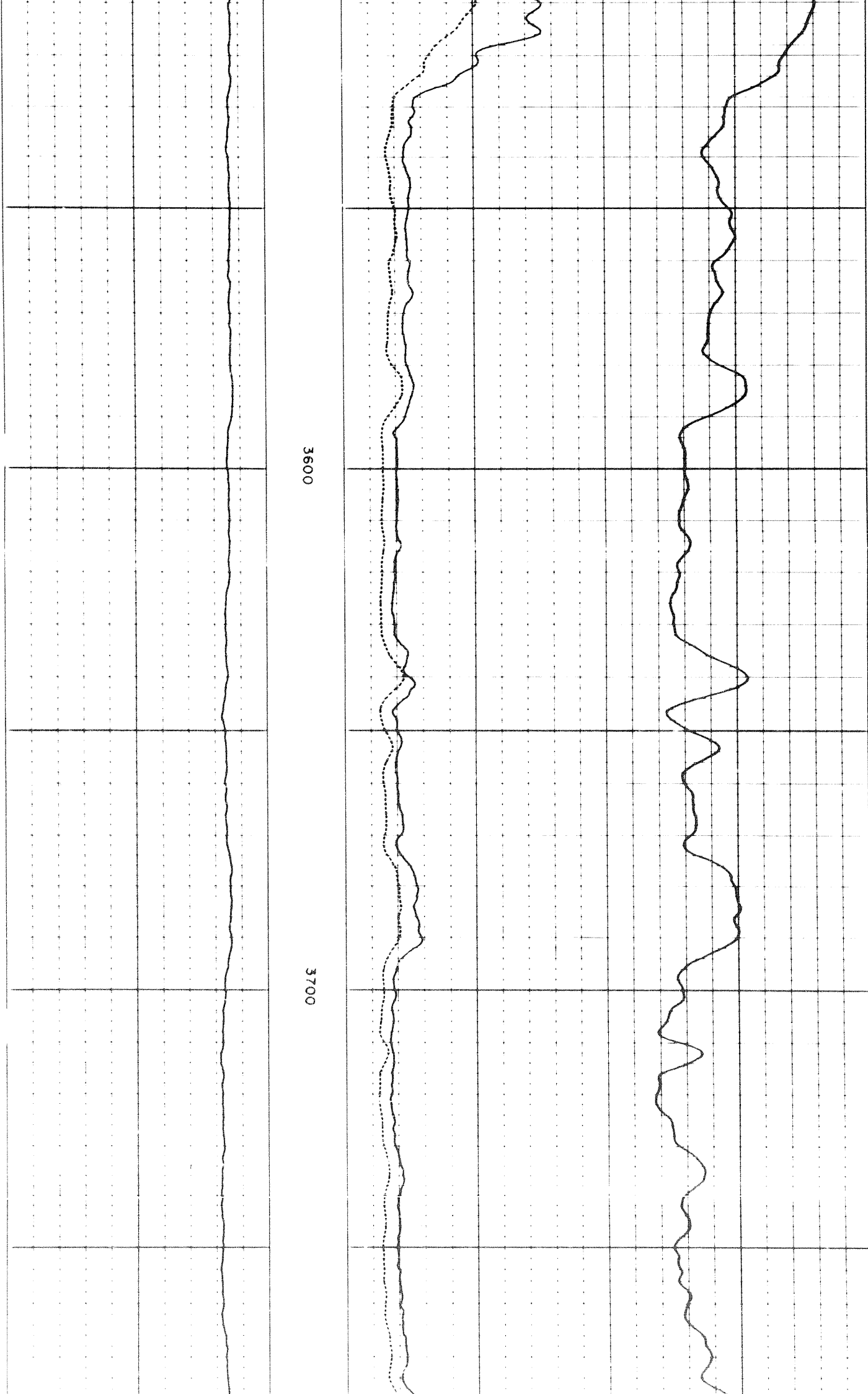
3100





921





3600

3700



3700

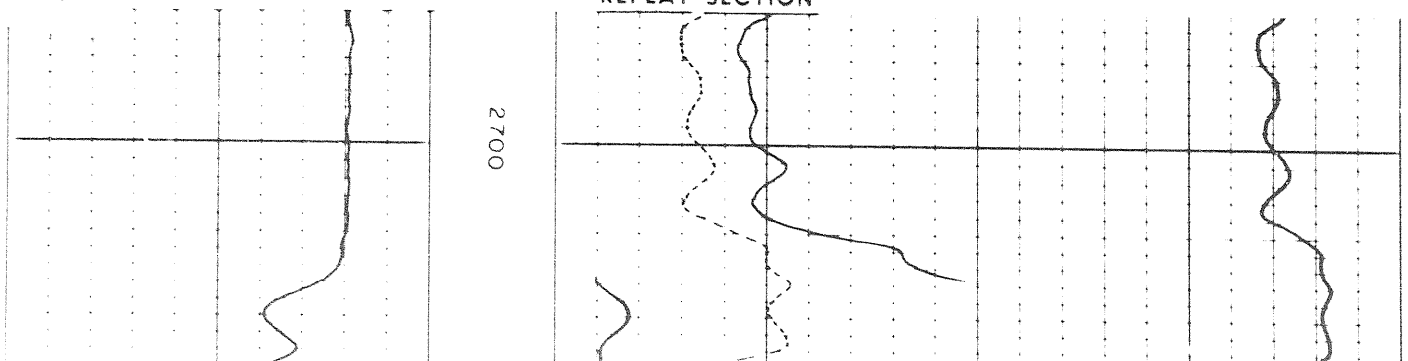
3800

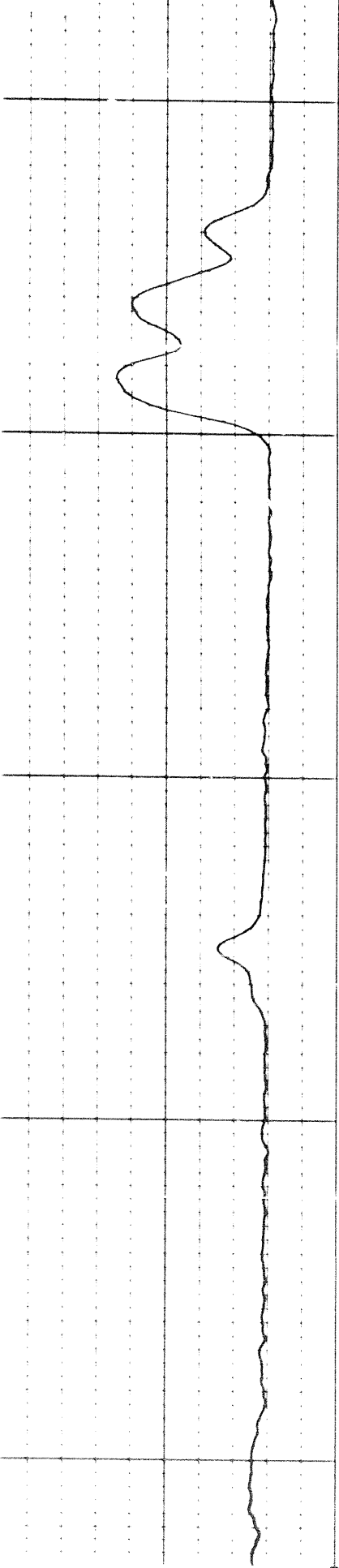
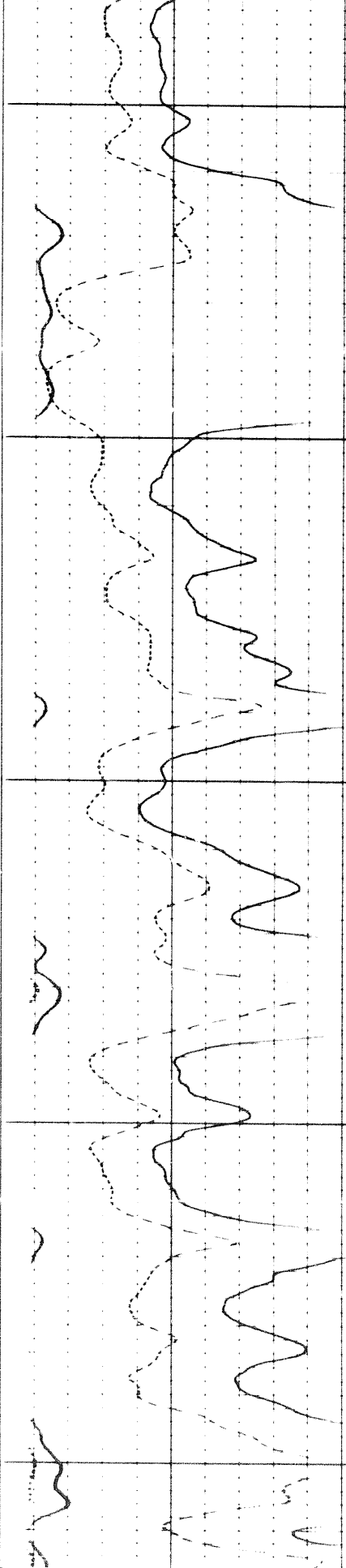
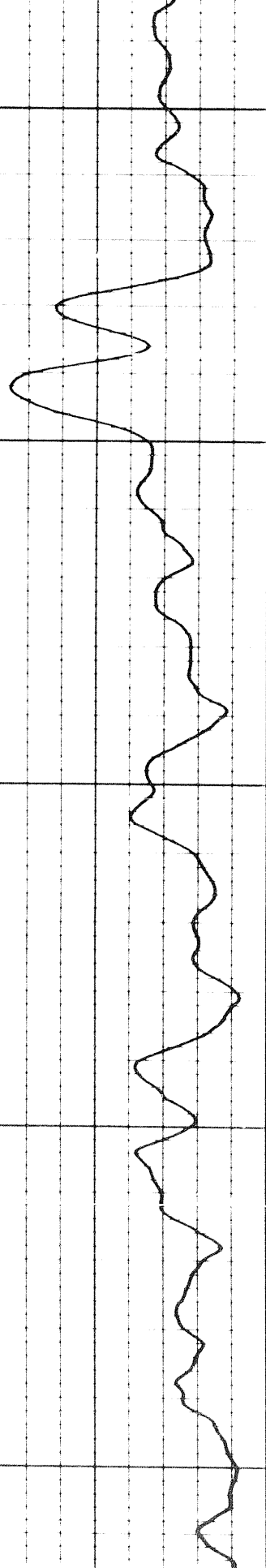
3900

10 27 11



REPEAT SECTION





2700

2800

2900

0	500
0	50
0	500

INDUCTION

2900

0	500
0	50
INDUCTION	
0	500
0	50
16" NORMAL	
RESISTIVITY ohms m/m	

Speed

20

600

400

INDUCTION

SPONTANEOUS POTENTIAL  
millivolts

DEPTHS 20

CONDUCTIVITY  
millimhos/m  $\times \frac{1000}{}$   
ohms m/m

Calibration before Survey

COMPANY SHELL OIL AND GAS CO. LTD.

WELL SHELL FIELD R, WT J-21

FIELD WILDCAT PROVINCE YORK TERRITORY

