

BLIND STAMP Y-10-21

TABLE OF CONTENTS

I General
 Summary of Well Data

II Geological Summary
 Summary of Geological Formation Tops
 Sample Description

III Engineering Summary
 Drill Stem Tests
 Casing Record
 Bit Record
 Mud Record
 Deviation Record
 Abandonment Plugs
 Lost Circulation Zone
 Report of Blowouts

IV Logs
 Type of Logs

V Analysis
 Core Analysis
 Water Analysis
 Gas Analysis
 Water Analysis

Section I Summary of Well Data

- (A) Well Name and Number
Shell Pool K YT J-21
- (B) Permitter
Shell Canada Limited
- (C) Name of Operator
Shell Canada Limited
P.O. Box 186
Edmonton, Alberta.
- (D) Location
Unit J Section 21 Grid Lat 66° 40' Long. 134° 00'
Latitude 66° 30' 31.9" Longitude 134° 04' 52.3"
- (E) Permit Number
3609
- (F) Drilling Contractor
Regent Drilling Company
Rig # 21
- (G) Drilling Authority No.
No. 183 Date Issued: July 14, 1965
- (H) Classification
Wildcat
- (I) Elevation
Ground Level 137 K.B. Elevation 150
- (J) Date Spudded
July 31, 1965
- (K) Date Completed Drilling
August 27, 1965
- (L) Total Depth and Plugged Back Total Depth
T.D. 4000' P.B.T.D. Surface
- (M) Well Status
Plugged and Abandoned
- (N) Date Rig Released
September 1, 1965
- (O) Hole Size
24" Hole to 40'
13-1/4" Hole to 500'
6-3/4" Hole 500' to 4000'
- (P) Casing

<u>Casing Size</u>	<u>Weight</u>	<u>Amount</u>	<u>Set at</u>	<u>Sacks of Cement</u>	<u>Amount Filled</u>
20"	Conductor	Pipe	22	75 Sacks + 150 Pounds	CACL 2
16"	Conductor	Pipe	48	200 Sacks + 300 Pounds	CACL 2
9 5/8"	36	506 Ft.	498.02	43 4 50 Sacks + 2% CACL 2	

Section III - Geological

Formation Tops
Formation

Log Depth

Cretaceous 0 - 1170' 0 - 1168'
Mississippian 1170' - 4000' 1168 - 4000'

Cored Intervals

- 1. 2017' - 2027' 10.3' Recovery
- 2. 3934' - 3944' 10.7' Recovery

S.W.S.

1. 3979'	6. 2691'	11. 2317'	16. 1707'	21. 1150'
2. 3497'	7. 2598'	12. 2207'	17. 1617'	22. 1174'
3. 3205'	8. 2591'	13. 2067'	18. 1491'	23. 1132'
4. 2990'	9. 2493'	14. 1891'	19. 1406'	24. 1099'
5. 2804'	10. 2405'	15. 1793'	20. 1302'	

Core Description

As per sample description

SHELL PEEL PLATEAU YT J-21

66° 30' 31.9"N

K.B. 150'

134° 04' 32.3"W

T.D. 4000'

Samples start at 400'

400-410'	Shale	Medium to dark grey, cryptogranular. Fairly soft with traces of extremely fine silt content.
410-420	Shale	Medium to dark grey, cryptogranular. Fairly soft with a band of ironstone.
420-430	Shale	Medium to dark grey, cryptogranular.
430-440	Shale	Medium to dark grey, cryptogranular.
440-450	Shale	Medium to dark grey, cryptogranular. Fairly soft with traces of extremely fine silt.
450-460	Shale	Medium to dark grey, cryptogranular.
460-470	Shale	Medium to dark grey, cryptogranular.
470-480	Shale	Medium to dark grey, cryptogranular.
480-490	Shale	Medium to dark grey, cryptogranular.

490-500'	Shale	Medium to dark grey, cryptogranular. Trace of silt and trace of dolomite.
500-510	Shale	Medium to dark grey, cryptogranular.
510-520	Shale	Medium to dark grey, cryptogranular. Set surface casing 502'.
520-530	Shale	Medium to dark grey, cryptogranular. Contains a band of ironstone.
530-540	Shale	Medium to dark grey, cryptogranular.
540-550	Shale	Medium to dark grey, cryptogranular.
550-560	Shale	Medium to dark grey, cryptogranular.
560-570	Shale	Medium to dark grey, cryptogranular. Contains band of ironstone.
570-580	Shale	Medium to dark grey, cryptogranular.
580-590	Shale	Medium to dark grey, cryptogranular.
590-600	Shale	Medium to dark grey, cryptogranular.

600-610'	Shale	Medium to dark grey, cryptogranular.
610-630	Shale	Medium to dark grey, cryptogranular. Trace of silt.
630-650	Shale	Medium to dark grey, cryptogranular.
650-670	Shale	Medium to dark grey, cryptogranular. Trace of pyrite.
670-690	Shale	Medium to dark grey, cryptogranular.
690-710	Shale	Medium to dark grey, cryptogranular.
710-730	Shale	Medium to dark grey, cryptogranular.
730-750	Shale	Medium to dark grey, cryptogranular.
750-770	Shale	Medium to dark grey, cryptogranular. Trace of dolomite.
770-790	Shale	Medium to dark grey, cryptogranular.
790-810	Shale	Medium to dark grey, cryptogranular.
810-830	Shale	Medium to dark grey, cryptogranular. Streak of green shale.

830-850'	Siltstone	Medium grey, extremely fine with trace of cryptogranular shale and 10% dolomite. Glauconite up to 30%.
850-870	Siltstone	Medium grey, extremely fine with 20% cryptogranular shale and a trace of dolomite. Glauconite up to 30% in some chips.
870-880	Shale	Medium to dark grey, cryptogranular. 30% extremely fine silt, lithic. Glauconite up to 30%. Also some Mica.
880-890	Shale	Medium grey, cryptogranular. 20% extremely fine silt, lithic.
890-900	Shale-Siltstone	Medium to dark grey, cryptogranular. 50% extremely fine siltstone Glauconitic.
900-920	Siltstone	Medium grey, extremely fine. Trace of shale and trace of dolomite.
920-940	Siltstone	Medium to dark grey, extremely fine. 20% shale, cryptogranular. Glauconitic.
940-960	Shale-Siltstone	Medium to dark grey, cryptogranular. 50% extremely fine silt, lithic.
960-980	Shale	Medium to dark grey, cryptogranular. 20% extremely fine siltstone

980-1000'	Shale	Medium to dark grey, cryptogranular. 20% extremely fine siltstone.
1000-1020	Shale-Siltstone	Medium to dark grey, cryptogranular. 50% very fine siltstone, lithic.
1020-1040	Shale-Siltstone	Medium to dark grey, cryptogranular. Few very fine rounded, frosted quartz grains, floating.
1040-1060	Siltstone	Medium to light grey, very fine. 10% cryptogranular shale and a trace of dolomite. Micaceous.
1060-1080	Siltstone	White, fine to very fine. Few coarse grains floating loose in sample. Weak to fair cut fluorescence. Glauconitic.
1080-1090	Siltstone	Medium grey, very fine. 30% cryptogranular shale. Weak show of fluorescence ring.
1090-1100	Siltstone	Medium grey, very fine. 30% cryptogranular shale. Weak show of fluorescence ring.
1100-1110	Siltstone	Dark grey, extremely fine. 30% cryptogranular shale. Lost circulation at 1106'.

1110-1120'	Siltstone	Light grey, very to extremely fine. Trace of shale. Glauconitic.
1120-1130	Shale	Medium grey, microgranular to cryptogranular. 20% siltstone.
1130-1140	Shale-Siltstone	Dark grey, cryptogranular. 50% extremely fine siltstone.
1140-1145	Shale-Siltstone	Medium to dark grey, cryptogranular. 50% extremely fine Siltstone
1145-1150	Siltstone	Medium to dark grey, very fine to cryptogranular. 10% dolomite.
1150-1155	Shale	Dark grey, cryptogranular.
1155 -1160	Shale	Dark grey, cryptogranular. 30% medium to microgranular siltstone. Upper Devonian 1160'.
1160-1170	Sandstone	Light brown, fine to extremely fine. Lithic. Very hard quartzitic sandstone.
1170-1180	Shale	Very dark grey, cryptogranular. Extremely fine siltstone, 20%. Some chips have bluish lustre. Micaceous.
1180-1190	Shale	Very dark grey, cryptogranular. Extremely fine siltstone 20%. Band of fine to very fine sand. Micaceous.

1190-1200'	Shale	Very dark grey, cryptogranular. 20% extremely fine siltstone. Lost circulation material. Very poor samples. Micaceous.
1200-1210	Shale	Very dark grey, cryptogranular. 10% extremely fine siltstone. Micaceous.
1210-1220	Shale	Very dark grey, extremely fine to cryptogranular. 10% siltstone. Micaceous.
1220-1230	Shale	Very dark grey, cryptogranular. 10% extremely fine siltstone. Micaceous.
1230-1240		No samples.
1240-1250	Shale	Very dark grey, cryptogranular. 10% extremely fine siltstone. Micaceous.
1250-1260	Shale	Very dark grey, cryptogranular. 20% extremely fine siltstone. Trace of microgranular limestone. Micaceous.
1260-1270	Shale	Dark grey, cryptogranular. 20% extremely fine siltstone. Micaceous.
1270-1280	Shale	Medium to dark grey, cryptogranular. 20% extremely fine siltstone. Micaceous.

1280-1290'	Shale	Dark grey, crypto-granular. 20% extremely fine siltstone. Micaceous.
1290-1300	Shale	Dark grey, crypto-granular. 20% extremely fine siltstone. Micaceous.
1300-1305	Shale	Medium to dark grey, cryptogranular. 20% extremely fine siltstone. Micaceous.
1305-1310	Siltstone	Medium to dark grey, very fine to crypto-granular. 20% shale. Glauconite. Possible caving (?)
1310-1320	Shale	Medium to dark grey, cryptogranular. Trace of extremely fine siltstone. Micaceous.
1320-1330	Shale	Medium to dark grey, cryptogranular. Trace of extremely fine siltstone. Glauconitic and pyritic.
1330-1340	Shale	Medium to dark grey, cryptogranular.
1340-1350	Shale	Medium to dark grey, cryptogranular.
1350-1360	Shale	Medium to dark grey, cryptogranular. 10% extremely fine siltstone.
1360-1370	Shale	Medium to dark grey, cryptogranular. Micaceous.

1370-1380'	Shale	Medium to dark grey, cryptogranular.
1380-1390	Shale	Medium to dark grey, cryptogranular.
1390-1400	Shale	Medium to dark grey, cryptogranular.
1400-1410	Shale	Medium to dark grey, cryptogranular.
1410-1420	Shale	Medium to dark grey, cryptogranular. Trace of microgranular siltstone. Micaceous.
1420-1430	Shale	Medium to dark grey, cryptogranular. 10% extremely fine siltstone.
1430-1435	Shale-Siltstone	Medium to dark grey, cryptogranular. 50% very fine siltstone to sand.
1435-1440	Sandstone	Light grey, fine to very fine. Very hard and quartzitic. Probably in thin streaks.
1440-1450	Shale-Siltstone	Medium to dark grey, cryptogranular. 50% very fine siltstone to sand. Some sand in thin streaks.
1450-1460	Shale	Medium to dark grey, cryptogranular. 10% extremely fine siltstone with a band of very fine to extremely fine sandstone.

1460-1470'	Shale	Medium to dark grey, cryptogranular. 20% extremely fine siltstone.
1470-1475	Sandstone	Light grey, very fine to extremely fine. Very hard and quartzitic.
1475-1480	Shale	Medium to dark grey, cryptogranular. 40% very fine siltstone to sand.
1480-1490	Shale	Medium to dark grey, cryptogranular. 10% extremely fine siltstone.
1490-1500	Sandstone	White, medium to very fine. Band of extremely fine silt and also a band of pyrite. Plant remains.
1500-1510	Shale	Medium to dark grey, cryptogranular. 10% microgranular chert. Plant remains and pyrite present.
1510-1520	Shale	Medium to dark grey, cryptogranular. 10% microgranular chert. Shale slightly siliceous. Plant remains and Pyrite present.
1520-1530	Shale	Medium to dark grey, cryptogranular. Band of fine to very fine lithic sandstone. Plant remains and Pyrite present.

1530-1540'	Shale	Medium to dark grey, cryptogranular. Trace of chert. Pyrite nodule also present.
1540-1550	Shale	Medium to dark grey, cryptogranular. Pyrite is present.
1550-1560	Shale	Medium to dark grey, cryptogranular. 10% Pyrite.
1560-1570	Shale	Medium to dark grey, cryptogranular. Plant remains and Pyrite are present.
1570-1580	Shale	Dark grey, cryptogranular. Shale is hard and slightly siliceous (?) Trace of Chert. Plant remains present.
1580-1590	Shale	Dark grey, cryptogranular. 10% Chert. Pyritic.
1590-1600	Shale	Dark grey, cryptogranular. Trace of Chert. Few quartz veins.
1600-1610	Shale	Dark grey, cryptogranular. Trace of Chert.
1610-1620	Shale	Dark grey, cryptogranular. Trace of Chert.
1620-1630	Shale	Dark grey, cryptogranular. 10% Chert. Pyritic.

1630-1640'	Sandstone	Light grey, fine to very fine. Trace of microgranular dolomite.
1640-1650	Shale	Dark grey, cryptogranular.
1650-1660	Shale	Dark grey, cryptogranular. 20% extremely fine siltstone.
1660-1670	Shale	Dark grey, cryptogranular.
1670-1680	Shale	Dark grey, cryptogranular. 20% extremely fine siltstone.
1680-1690	Shale	Dark grey, cryptogranular. Few Pyrite chips give good cut fluorescence. Pyrite has replaced plant fossils.
1690-1700	Siltstone	Dark grey, extremely fine. 30% cryptogranular shale.
1700-1710	Shale	Dark grey, cryptogranular.
1710-1720	Shale	Dark grey, cryptogranular. 30% extremely fine siltstone.
1720-1730	Siltstone	Dark grey, extremely fine. 20% cryptogranular shale.
1730-1740	Sandstone	Light grey, very fine to extremely fine. Lithic.

1740-1750'	Siltstone	Dark grey, extremely fine. 40% cryptogranular shale.
1750-1755	Sandstone	Light grey, fine to extremely fine.
1755-1760	Siltstone-Shale	Dark grey, extremely fine. 50% cryptogranular shale.
1760-1765	Sandstone	Light grey, fine to extremely fine. Lithic.
1765-1770	Siltstone-Shale	Dark grey, extremely fine. 50% cryptogranular shale.
1770-1780	Siltstone-Shale	Dark grey, extremely fine. 50% cryptogranular shale.
1780-1785	Sandstone	Light grey, fine to extremely fine. Lithic.
1785-1790	Siltstone-Shale	Dark grey, extremely fine. 50% cryptogranular shale.
1790-1795	Sandstone	Light grey, fine to extremely fine. Lithic. Very hard, quartzitic.
1795-1800	Siltstone-Shale	Dark grey, extremely fine. 50% cryptogranular shale.
1800-1810	Sandstone	Light grey, fine to extremely fine. Lithic. Band of extremely fine to cryptogranular siltstone shale.

1810-1820'	Shale	Dark grey, cryptogranular. 30% extremely fine siltstone.
1820-1830	Sandstone	Dark grey, very fine. 40% cryptogranular shale.
1830-1835	Shale	Dark grey, cryptogranular.
1835-1840	Sandstone	Light grey, fine to extremely fine. Quartzitic.
1840-1850	Sandstone	Medium to dark grey, very fine. 30% cryptogranular shale.
1850-1855	Shale	Medium to dark grey, cryptogranular.
1855-1860	Sandstone	Light grey, fine to extremely fine. Lithic.
1860-1865	Shale	Medium dark grey, cryptogranular. 20% extremely fine siltstone. Plant remains and Pyrite present
1865-1870	Sandstone	Light grey, fine to extremely fine. Lithic. Appears to be in laminae about one-tenth of an inch thick.
1870-1875	Shale	Light grey, cryptogranular.
1875-1880	Sandstone	Light grey, fine to extremely fine. Lithic. Appears to be in laminae about one-tenth of an inch thick.

1880-1890'	Siltstone-Shale	Medium to dark grey, very fine to cryptogranular. 50% shale.
1890-1900	Shale	Dark grey, cryptogranular.
1900-1905	Shale	Dark grey, cryptogranular.
1905-1910	Sandstone	Light grey, very fine to extremely fine. Lithic.
1910-1920	Shale	Dark grey, cryptogranular. 30% extremely fine siltstone.
1920-1925	Shale	Dark grey, cryptogranular.
1925-1930	Sandstone	Very light grey, fine to extremely fine. Lithic.
1930-1940	Sandstone	White, medium to very fine. Lithic. Quartzitic with tripolitic Chert and plant remains are present.
1940-1945	Shale	White, cryptogranular. Plant remains present.
1945-1950	Sandstone	Dark grey, fine to very fine. Quartzitic and lithic. Contains white tripolitic Chert and Plant remains.
1950-1955	Shale	Dark grey, cryptogranular. Plant remains.

1955-1960	Sandstone	Light grey, fine to very fine. Lithic. Plant remains.
1960-1970	Shale	Dark grey, cryptogranular. 30% extremely fine siltstone.
1970-1980	Siltstone	Dark grey, extremely fine. 40% cryptogranular shale.
1980-1990	Sandstone	Very light grey, fine to extremely fine. Lithic. Sand appears to be in laminae one-tenth of an inch thick.
1990-2000	Siltstone-Shale	Dark grey, extremely fine. 50% cryptogranular shale.
2000-2010	Sandstone	Very light grey, fine to extremely fine. Lithic. Band of cryptogranular shale.
2010-2014		4' error on geograph.
2014-2020	Shale	Dark grey, cryptogranular. Band of fine to extremely fine lithic sandstone.
2020-2030	Siltstone-Shale	Dark grey, extremely fine. Trace of cryptogranular shale. Stringers of quartzitic sandstone.
2030-2040	Shale	Dark grey, cryptogranular. Band of very fine to extremely fine lithic sandstone up to 1' beds with ripple markings on tops of beds. Pyritic.

2040-2050'	Shale	Dark grey, cryptogranular.
2050-2055	Sandstone	Light grey, fine to extremely fine. Lithic.
2055-2060	Shale	Dark grey, cryptogranular. 10% extremely fine siltstone.
2060-2070	Shale	Dark grey, cryptogranular. 10% extremely fine siltstone.
2070-2080	Shale	Dark grey, cryptogranular. 10% extremely fine siltstone.
2080-2090	Shale	Dark grey, cryptogranular.
2090-2100	Shale	Dark grey, cryptogranular.
2100-2110	Shale	Very dark grey, cryptogranular.
2110-2120	Shale	Very dark grey, cryptogranular.
2120-2125	Sandstone	Light grey, fine to extremely fine. Silty. Lithic.
2125-2130	Shale	Dark grey, cryptogranular.
2130-2140	Shale	Dark grey, cryptogranular. 10% extremely fine siltstone.

2140-2150'	Shale	Very dark grey, cryptogranular. 20% extremely fine siltstone.
2150-2160	Shale	Very dark grey, cryptogranular. 20% extremely fine siltstone.
2160-2165	Sandstone	Dark grey, fine to extremely fine. Silty. Lithic. Plant remains.
2165-2170	Shale	Dark grey, cryptogranular. Plant remains.
2170-2180	Shale	Dark grey, cryptogranular.
2180-2190	Shale	Dark grey, cryptogranular. 10% extremely fine siltstone.
2190-2200	Shale	Dark grey, cryptogranular. 20% extremely fine siltstone.
2200-2210	Shale	Dark grey, cryptogranular. 20% extremely fine siltstone. Lithic.
2210-2220	Siltstone-Shale	Dark grey, extremely fine. 50% cryptogranular shale.
2220-2230	Shale	Very dark grey, cryptogranular.
2230-2240	Shale	Very dark grey, cryptogranular.
2240-2250	Shale	Very dark grey, cryptogranular.

2250-2255'	Sandstone	Light grey, fine to extremely fine. Lithic.
2255-2260	Shale	Dark grey, cryptogranular.
2260-2270	Sandstone	Light grey, fine to extremely fine. Lithic. Very weak cut fluorescence
2270-2280	Shale	Dark grey, cryptogranular.
2280-2290	Shale	Dark grey, cryptogranular.
2290-2300	Shale	Dark grey, cryptogranular. 10% extremely fine siltstone. Lithic.
2300-2310	Shale	Dark grey, cryptogranular. 20% extremely fine siltstone. Lithic.
2310-2320	Shale	Dark grey, cryptogranular. 20% extremely fine siltstone. Lithic.
2320-2330	Shale	Very dark grey, cryptogranular. Shale has bluish-black lustre. Trace of Chert.
2330-2340	Shale	Very dark grey, cryptogranular.
2340-2350	Shale	Very dark grey, cryptogranular. Pyritic.
2350-2360	Shale	Very dark grey, cryptogranular. Pyritic and plant remains.

2360-2370'	Shale	Very dark grey, cryptogranular.
2370-2380	Sandstone	Light grey, fine to extremely fine. Silty. Lithic. Pyritic.
2380-2390	Shale	Dark grey, cryptogranular.
2390-2400	Shale	Dark grey, cryptogranular.
2400-2410	Shale	Dark grey, cryptogranular.
2410-2420	Shale	dark grey, cryptogranular. Trace of siltstone. Lithic.
2420-2430	Shale	Dark grey, cryptogranular. Trace of siltstone. Lithic.
2430-2440	Shale	Dark grey, cryptogranular. Trace of siltstone. Lithic.
2440-2450	Siltstone-Shale	Dark grey, extremely fine. 50% cryptogranular shale.
2450-2460	Shale	Very dark grey, cryptogranular.
2460-2470	Shale	Very dark grey, cryptogranular. Hard, brittle and slightly siliceous (?) Trace of Chert.

2470-2480'	Shale	Very dark grey, cryptogranular.
2480-2490	Shale	Very dark grey, cryptogranular.
2490-2500	Shale	Very dark grey, cryptogranular. 10% extremely fine siltstone. Lithic.
2500-2510	Shale	Very dark grey, cryptogranular.
2510-2520	Shale	Very dark grey, cryptogranular.
2520-2530	Shale	Very dark grey, cryptogranular.
2530-2540	Shale	Dark grey, cryptogranular. 30% extremely fine siltstone. Lithic.
2540-2550	Shale	Dark grey, cryptogranular. 20% extremely fine siltstone. Lithic.
2550-2560	Siltstone	Dark grey, extremely fine. Lithic. 40% cryptogranular shale.
2560-2570	Shale	Dark grey, cryptogranular.
2570-2580	Siltstone	Dark grey, extremely fine. Lithic. 40% cryptogranular shale.
2580-2590	Siltstone-Shale	Dark grey, fine to extremely fine. Lithic. 50% cryptogranular shale.

2590-2600'	Siltstone-Shale	Dark grey, very fine. Lithic. 50% cryptogranular shale.
2600-2610	Sandstone	White, medium to very fine. Lithic. Very weak out fluorescence. Very hard and quartzitic.
2610-2620	Shale	Dark grey, cryptogranular. 20% extremely fine siltstone. Lithic.
2620-2630	Shale	Dark grey, cryptogranular. 40% extremely fine siltstone. Lithic.
2630-2635	Shale	Dark grey, cryptogranular. 40% extremely fine siltstone. Lithic.
2635-2640	Sandstone	White, medium to very fine. Lithic. Quartz and Chert in light and dark grey.
2640-2645	Shale	Dark grey, cryptogranular. 20% extremely fine siltstone. Lithic.
2645-2650	Sandstone	White, medium to very fine. Lithic. Chert tripolitic in parts. Angular, very hard and quartzitic.
2650-2655	Shale	Dark grey, cryptogranular. 20% extremely fine siltstone. Lithic.
2655-2660	Sandstone	White, medium to very fine. Lithic.

2660-2670'	Shale	Dark grey, cryptogranular.
2670-2680	Shale	Dark grey, cryptogranular.
2680-2690	Shale	Dark grey, cryptogranular. 30% very fine sandstone. Lithic. Some silt.
2690-2700	Shale	Dark grey, cryptogranular. 10% extremely fine siltstone. Lithic.
2700-2710	Shale	Dark grey, cryptogranular. 10% extremely fine siltstone. Lithic.
2710-2720	Shale	Dark grey, cryptogranular. 20% extremely fine siltstone. Lithic.
2720-2730	Sandstone	White, fine to very fine. Quartzitic sandstone. Lithic.
2730-2740	Sandstone	White, fine to very fine. Lithic. Band of cryptogranular shale. Pyritic and plant remains.
2740-2745	Sandstone	White, fine to very fine. Lithic.
2745-2750	Shale	Dark grey, cryptogranular. Good cut fluorescence.
2750-2760	Shale	Dark grey, cryptogranular.

2760-2770'	Sandstone	Dark grey, fine to very fine. Lithic. Slightly calcareous and very carbonaceous. 10% siltite
2770-2780	Shale	Dark grey, crypto-granular. 10% extremely fine siltstone. Lithic.
2780-2790	Siltstone-Shale	Medium dark brown, fine to extremely fine. Lithic. Trace of cryptogranular shale. Fair cut fluorescence.
2790-2800	Shale	Dark grey, crypto-granular. 40% very fine sandy siltstone. Lithic.
2800-2810	Shale	Dark grey, crypto-granular.
2810-2820	Siltstone-Sandstone	Dark grey, very fine to extremely fine. 30% cryptogranular shale. Weak cut fluorescence.
2820-2830	Sandstone	White, fine to very fine. Lithic.
2830-2840	Sandstone - Siltstone	Medium grey, fine to extremely fine. Lithic. 10% shale. Carbonaceous and plant remains.
2840-2850	Sandstone	White, medium to extremely fine. Lithic. Band of cryptogranular shale.
2850-2860	Shale	Dark grey, crypto-granular
2860-2865	Sandstone - Siltstone	Light grey, fine to extremely fine. Lithic.

2865-2870'	Shale	Dark grey, cryptogranular.
2870-2875	Shale	Medium dark grey, cryptogranular. 10% extremely fine siltstone. Pyritic.
2875-2880	Sandstone	Very light grey, fine to extremely fine.
2880-2890	Shale	Dark grey, cryptogranular.
2890-2900	Sandstone	60% sandstone, fine to extremely fine. 40% cryptogranular shale, medium dark grey. Band of medium to very fine sandstone.
2900-2910	Shale	Medium dark grey, cryptogranular. 10% siltstone. Band of medium to very fine lithic sandstone.
2910-2920	Shale - Sandstone	50% medium dark grey, cryptogranular. 50% siltstone. Band of medium to very fine sandstone.
2925-2930	Sandstone	White, medium to very fine.
2930-2940	Shale	Dark grey, cryptogranular.
2940-2950	Shale	Dark grey, cryptogranular. 10% siltstone.
2950-2955	Shale	Dark grey, cryptogranular. 10% siltstone.

2955-2960'	Siltstone - Sandstone	White, very fine to extremely fine.
2960-2970	Shale	Medium dark grey, crypto- granular. 10% siltstone.
2970-2980	Shale	Medium dark grey, crypto- granular. 10% siltstone.
2980-2990	Shale	Dark grey, crypto- granular.
2990-2995	Shale	Dark grey, crypto- granular. 10% silt- stone.
2995-3000	Siltstone - Sandstone	White, fine to extremely fine.
3000-3010	Shale	Dark grey, crypto- granular.
3010-3020	Shale	Medium dark grey, cryptogranular.
3020-3030	Shale	Medium dark grey, crypto- granular. 10% siltstone. Lithic.
3030-3040	Shale	Medium dark grey, crypto- granular. 10% siltstone. Lithic.
3040-3050	Shale	Medium dark grey, crypto- granular. 10% siltstone. Lithic.
3050-3060	Siltstone - Shale	70% fine to extremely fine. 30% medium dark grey, cryptogranular shale.

3060-3070'	Shale	Dark grey, cryptogranular.
3070-3080	Shale	Dark grey, cryptogranular. Band of fine to extremely fine silty sandstone.
3080-3090	Siltstone - Sandstone	70% fine to extremely fine. Lithic. 30% cryptogranular shale.
3090-3100	Siltstone - Sandstone	70% fine to extremely fine. Lithic. 30% cryptogranular shale. Band of medium to very fine sandstone.
3100-3110	Siltstone - Sandstone	80% fine to extremely fine. Lithic. 20% medium dark grey shale. Cryptogranular.
3110-3115	Shale	Medium dark grey, cryptogranular.
3115-3120	Siltstone - Sandstone	90% fine to extremely fine. Lithic. 10% medium dark grey, cryptogranular shale.
3120-3125	Shale	Medium dark grey, cryptogranular.
3125-3130	Siltstone - Sandstone	90% fine to extremely fine. Lithic. 10% medium dark grey, cryptogranular shale.
3130-3135	Shale	Medium dark grey, cryptogranular.

3135-3140'	Siltstone - Sandstone	80% fine to extremely fine. Lithic. 20% medium dark grey, cryptogranular shale.
3140-3150	Sandstone	Medium to very fine. Lithic. Trace of light brown shale. Trace of dolomite. Band of shale.
3150-3155	Shale	Medium dark grey, cryptogranular.
3155-3160	Siltstone - Sandstone	60% medium to extremely fine. Lithic. 40% medium dark grey, cryptogranular shale.
3160-3165	Siltstone - Sandstone	Fine to extremely fine. Lithic. Light brown.
3165-3170	Shale	Medium dark grey, cryptogranular.
3170-3180	Shale	Dark grey, cryptogranular.
3180-3190	Shale	Dark grey, cryptogranular.
3190-3200	Shale	Dark grey, cryptogranular.
3200-3205	Shale	60% medium dark grey, cryptogranular. 40% silty sandstone, fine to extremely fine. Lithic.
3205-3210	Shale	Medium dark grey, cryptogranular.

3210-3215'	Siltstone - Sandstone	80% fine to extremely fine. Lithic. 20% medium dark grey shale.
3215-3220	Shale	Medium dark grey, cryptogranular.
3220-3230	Shale	Dark grey, cryptogranular.
3230-3240	Shale	Dark grey, cryptogranular.
3240-3250	Shale	Dark grey, cryptogranular.
3250-3260	Shale	Dark grey, cryptogranular.
3260-3270	Shale	Dark grey, cryptogranular.
3270-3280	Shale	Dark grey, cryptogranular.
3280-3290	Shale	Dark grey, cryptogranular.
3290-3295	Shale	Dark grey, cryptogranular.
3295-3300	Siltstone- Sandstone	80% fine to extremely fine. Lithic. 20% dark grey, cryptogranular shale.
3300-3310	Shale	Dark grey, cryptogranular. Band of medium to very fine sandstone.
3310-3320	Shale	Dark grey, cryptogranular. Band of medium to very fine sandstone.
3320-3330	Shale	Dark grey, cryptogranular. Band of medium to very fine sandstone.

3330-3340'	Shale	Dark grey, cryptogranular. Trace of siltstone. Lithic.
3340-3350	Shale	Dark grey, cryptogranular.
3350-3360	Shale	Dark grey, cryptogranular. Pyritic.
3360-3370	Shale	Dark grey, cryptogranular. Pyritic.
3370-3380	Shale	Dark grey, cryptogranular.
3380-3390	Shale	Dark grey, cryptogranular.
3390-3400	Shale	Dark grey, cryptogranular.
3400-3410	Shale	Dark grey, cryptogranular.
3410-3420	Shale	Dark grey, cryptogranular.
3420-3430	Shale	Dark grey, cryptogranular. Band of silty sandstone. Lithic.
3430-3440	Shale	Dark grey, cryptogranular. Band of sandy shale. Very fine to microgranular.
3440-3450	Shale	Dark grey, cryptogranular. 10% siltstone. Lithic.
3450-3455	Siltstone - Sandstone	70% fine to extremely fine. Lithic. 30% dark grey, cryptogranular shale.
3455-3460	Shale	Dark grey, cryptogranular. Band of sandy shale.

3460-3465'	Siltstone	80% extremely fine. Lithic. 20% dark grey, cryptogranular shale.
3465-3470	Shale	Dark grey, cryptogranular.
3470-3475	Siltstone - Sandstone	60% fine to extremely fine. Lithic. 40% dark grey, cryptogranular shale.
3475-3480	Shale	Dark grey, cryptogranular.
3480-3485	Siltstone - Sandstone	White, fine to extremely fine. Lithic.
3485-3490	Shale	Dark grey, cryptogranular. Trace of microgranular dolomite.
3490-3500	Shale	Dark grey, cryptogranular.
3500-3505	Shale	Dark grey, cryptogranular.
3505-3510	Sandstone - Siltstone	Fine to extremely fine. Lithic. Light grey.
3510-3515	Shale	dark grey, cryptogranular. Pyritic.
3515-3520	Siltstone - Sandstone	Fine to extremely fine. Lithic. Light grey. 10% dolomite.
3520-3525	Shale	Dark grey, cryptogranular. 10% extremely fine to microgranular siltstone.
3525-3530	Silty Sandstone - Shale	50% fine to extremely fine. Lithic. 50% dark grey, cryptogranular shale.
3530-3535	Shale	Dark grey, cryptogranular.

3535-3540'	Silty Sandstone - Shale	80% fine to extremely fine. Lithic. 20% dark grey cryptogranular shale.
3540-3550	Shale	Dark grey, cryptogranular.
3550-3560	Silty Sandstone	70% very fine to extremely fine. Lithic. 30% dark grey, cryptogranular shale.
3560-3570	Shale	Dark grey, cryptogranular.
3570-3580	Shale	Dark grey, cryptogranular.
3580-3590	Shale	Dark grey, cryptogranular.
3590-3600	Shale	Dark grey, cryptogranular. Band of extremely fine siltstone. Lithic.
3600-3610	Shale	Dark grey, cryptogranular.
3610-3620	Shale	Dark grey, cryptogranular.
3620-3630	Shale	Dark grey, cryptogranular.
3630-3640	Shale	Dark grey, cryptogranular.
3640-3650	Shale	Dark grey, cryptogranular.
3650-3660	Shale	Dark grey, cryptogranular.
3660-3670	Shale	Dark grey, cryptogranular.
3670-3680	Shale	Dark grey, cryptogranular. Band of extremely fine siltstone. Lithic.

3680-3690	Shale	Dark grey, cryptogranular.
3690-3700	Shale	Dark grey, cryptogranular. Band of 90% shale and 10% siltstone. Lithic.
3700-3710	Shale	Dark grey, cryptogranular.
3710-3720	Shale	Dark grey, cryptogranular.
3720-3730	Shale	Dark grey, cryptogranular.
3730-3740	Shale	Dark grey, cryptogranular.
3740-3750	Shale	Dark grey, cryptogranular. Band of extremely fine siltstone. Lithic.
3750-3760	Shale	Shale, dark grey, cryptogranular. Band of sandy silt. Very fine to extremely fine.
3760-3770	Shale	Dark grey, cryptogranular. Band of sandy silt. Very fine to extremely fine.
3770-3780	Shale	Dark grey, cryptogranular.
3780-3790	Shale	Dark grey, cryptogranular.
3790-3800	Shale	Dark grey, cryptogranular.
3800-3810	Siltstone	80% extremely fine. Lithic. 20% dark grey cryptogranular shale.
3810-3820	Shale	Dark grey cryptogranular.

3820-3830'	Siltstone	90% extremely fine. Lithic. 10% dark grey cryptogranular shale. Trace of dolomite.
3830-3840	Shale	Dark grey, cryptogranular.
3840-3850	Siltstone	70% extremely fine. Lithic. 20% dark grey, cryptogranular shale. 10% dolomite.
3850-3860	Siltstone	90% extremely fine. Lithic. 10% shale, medium dark grey, cryptogranular.
3860-3870	Shale	Medium dark grey, cryptogranular.
3870-3880	Siltstone	80% extremely fine. Lithic. 10% medium dark grey, cryptogranular shale. 10% dolomite.
3880-3890	Shale	Medium dark grey, cryptogranular.
3890-3900	Siltstone	85% extremely fine. Lithic. 15% medium dark grey, cryptogranular shale. Trace of dolomite.
3900-3910	Shale	Medium dark grey, cryptogranular.
3910-3920	Siltstone	80% extremely fine. Lithic. 20% cryptogranular shale.
3920-3930	Shale	Medium dark grey, cryptogranular.
3930-3940	Shale	Medium dark grey, cryptogranular.
3940-3950	Siltstone	70% extremely fine. Lithic. 30% medium dark grey, cryptogranular shale. Trace of dolomite.

3950-3960'	Shale	Dark grey, crypto-granular.
3960-3970	Siltstone - Sandstone	90% very fine to extremely fine. Lithic. 10% medium dark grey, cryptogranular shale.
3970-3975	Siltstone - Sandstone	Very fine to extremely fine. Lithic. Trace of medium dark grey, cryptogranular shale.
3975-3980	Shale	Medium dark grey, cryptogranular.
3980-3985	Siltstone - Sandstone	Very fine to extremely fine. Lithic. Trace of medium dark grey, cryptogranular shale.
3985-3990	Shale	Medium dark grey, cryptogranular.
3990-3995	Siltstone - Sandstone	very fine to extremely fine. Lithic. Trace of medium dark grey, cryptogranular shale.
3995-4000	Shale	Medium dark grey, cryptogranular.

Section III Engineering Summary

Drill Stem Tests

<u>Test No.</u>	<u>Interval</u>	<u>To</u>	<u>Flow Rate & Recovery</u>	<u>IFP</u>	<u>FFP</u>	<u>1 SIP/Time</u>	<u>FSIP/Time</u>
1	2720 2792	60 Min	180' (0.9 Bbls.) Mud 115' (0.6 Bbls.) W.Mud	90	150	1161/15	1118/60

Casing Record

<u>Casing Size</u>	<u>Weight</u>	<u>Grade</u>	<u>Depth</u>	<u>Cement</u>
20"	Conductor		22	75 SX Port & 150 Lb CaCL ₂
16"	Conductor		48'K.B.	200 SX Port & 2% CaCL ₂
9 5/8"	36#	J55	499'K.B.	450 SX Port & 2% CaCL ₂

Bit Record

<u>No.</u>	<u>Size</u>	<u>Type</u>	<u>Depth Out</u>	<u>Feet</u>	<u>Hours Prod.</u>
1A	13 3/4	DSC ₃	102	102	9 1/4
2A	13 3/4	S ₃	268	166	6
3A	13 3/4	S ₃	502	243	9
1	6 3/4	OSC ₃	1107	605	13
2	6 3/4	OSC ₃	1257	150	9 3/4
3	6 3/4	S ₄	1438	181	8 3/4
4	6 3/4	OSC	1490	52	4
5	6 3/4	M ₄ L	1503	13	3 1/2
6	6 3/4	YCG	1625	122	11
7	6 3/4	M ₄ N	1730	105	6 1/4
8	6 3/4	M ₄ N	1804	101	5 1/2
9	6 3/4	OWC	1811	7	1 3/4
10	6 3/4	YCG	1852	41	5 1/4
11	6 3/4	YHW2	1929	77	10 1/2
12	6 3/4	YHW	1941	12	4
13	6 3/4	HT ²	2017	76	8 3/4
∅ Bit	4 11/16		2027	10	3 1/4
14	6 3/4	W7R	2045	18	7 1/4
15	6 3/4	RG7X	2052	7	4
16	6 3/4	YHW	2125	73	11
17	6 3/4	YHW	2187	62	9
18	6 3/4	H7W ²	2273	6	10
19	6 3/4	H7W	2354	81	12 1/4
20	6 3/4	H7	2452	102	12 1/2
21	6 3/4	H7	2568	116	12 3/4
22(RR#12)	6 3/4	H7	2615	37	3
23	6 3/4	W7R	2650	35	6 1/2
24	6 3/4	W7	2672	22	5 1/2
25	6 3/4	W7R	2754	82	10 1/2
26	6 3/4	H7U ²	2792	38	3 3/4
27	6 3/4	H7U	2834	42	7 1/2

<u>No.</u>	<u>Size</u>	<u>Type</u>	<u>Depth Out</u>	<u>Feet</u>	<u>Hours Prod.</u>
28	6 3/4	YHW2	2867	33	6 3/4
29	6 3/4	H7U	2898	31	7
30	6 3/4	YHW	2907	9	3
31	6 3/4	RG7 X	2913	6	3 1/2
32	6 3/4	HT	2939	26	5 1/2
33	6 3/4	YHW	2970	31	6
34	6 3/4	H7U ²	3050	80	9 1/4
35	6 3/4	HT	3097	47	7 1/4
36	6 3/4	YHW2	3137	40	8
37	6 3/4	HW	3180	43	4
38	6 3/4	HT	3300	20	15
39	6 3/4	HT	3388	88	7 1/4
40	6 3/4	M ₄ N	3704	16	17 1/4
41	6 3/4	M ₄ L	3790	86	9
42	6 3/4	W7	3934	144	12 1/4
◇ Bit	4 11/16		3944	10	1 3/4
43	6 3/4	W7	4000	56	5 1/2

Mud Record

Gel.	62,000 Lbs.
Caustic Soda	800 Lbs.
Lime	50 Lbs.
Super Lignite	150 Lbs.

Deviation Record

<u>Depth</u>	<u>Deviation</u>	<u>Depth</u>	<u>Deviation</u>
60	1/2°	2,150	4 3/4°
150	7/8°	2,300	5 1/2°
350	1/8°	2,452	6 1/2°
500	1/4°	2,560	7°
610	1/4°	2,672	7 1/2°
1,150	1°	2,800	7 1/2°
1,300	1 1/4°	2,860	8 1/4°
1,420	1 3/4°	3,070	9°
1,480	2°	3,100	9°
1,600	2 3/4°	3,175	9 1/2°
1,710	3°	4,000	16 1/2°
1,775	2 1/2°		
1,830	1 3/4°		
1,900	1 1/4°		
1,980	4°		
2,055	5°		

Abandonment Plugs

Interval	Cement
Plug #1 4,000 - 3,900	30 Sacks
#2 2,800 - 2,650	40 Sacks + 3% CaCl_2
#3 1,220 - 1,050	45 Sacks + 3% CaCl_2
#4 550 - 450	60 Sacks + 3% CaCl_2
#5 Surface Casing Rat Hole & Mouse Hole	5 Sacks in each

Lost Circulation Zones

1. Lost 100 Bbls. Mud @ 1,107' in Cretaceous unconsolidated sand.
Controlled with 60 SX, Coarse walnut shells & 60 SX Sawdust.

Report of Blowouts

None

Logs:

8/27-8/28/65	I.E.S.	3981' - 497'
	B.H.C. - S.G.R.	3977' - 497'
	M.L.C.	3979' - 497'
	F.D.L.	3979' - 800'
	S.R.S.	600', 1160', 2000', 3950', 3000'

Analysis:

Core - refer to sample description. D.S.T. #1

8/23/65 Water - D.S.T. #1 Lab. No. 1256

Sample No.	Resistivity - Ohms/cm ² on	CL ppm	NaCl ppm
1	16.6	9	
2	3.2	380	
3	0.53	7,000	
4	0.28	14,000	23,800
5	0.42	9,300	

ANALYSIS

GAS - None

OIL - None

T.G. EASTLAND — testers ltd.

R.R. NO. 6 NORTH • EDMONTON, ALBERTA

TEST No. One
Date Aug. 18/65
Ticket No. A-151

SERVICE REPORT

Well Name: SHELL PEEL RIVER YT - J-21

L.S.D. YT-J-21

Formation Tested:

TEST RESULT DATA

TYPE OF TEST: Standard Duals Straddle Casing

Started in Hole: 1:00 pm Tool Opened: 3:30 pm

From: 2720' To: 2792' Tail Pipe: 72'

Initial Shut-in: 13 Min. Flow Period: 60 Min

Main Hole Depth: 2792' Rat Hole Depth:

Final Shut-in: 57 Min. Out of Hole: 6:30 pm

Hole Size Tested: 6 3/4" Main Hole Rat Hole

Choke Bottom: 1/2"

Casing Depth: 498' Size: 9.5/8" Weight: 36#

Choke Surface: 3/4"

Type of Drill Pipe: 3 1/2" I.F. Tubing:

Flow Rate Mcf/day Flare Line Riser:

Type of Packer(s): Conventional (2)

Mcf/day measured by:

Size of Rubber Element(s): 6"

FLUID CUSHION: Max. Well Temp.: 107 F

REMARKS: Good initial puff for 1 minute. Open

DRLG. FLUID: Viscosity: 47 Weight: 9.2 W.L.

on 1/2" choke. Weak air blow, decreasing

FIELD (est.) CORRECTED

after 30 minutes. Decreased to very

1333 Initial Hydrostatic Pressure psig 1289

faint blow at end of test.

1161 Shut-In Press. #1 After 3 Min. psig 1121

90 Initial Flowing Pressure psig 71

150 Max. Flowing Pressure psig 128

1113 Shut-In Press. #2 After 57 Min. psig 1080

PRESENT DURING TEST

Your Representative R. B. Cumbers

Our Operator G. Podmeroff

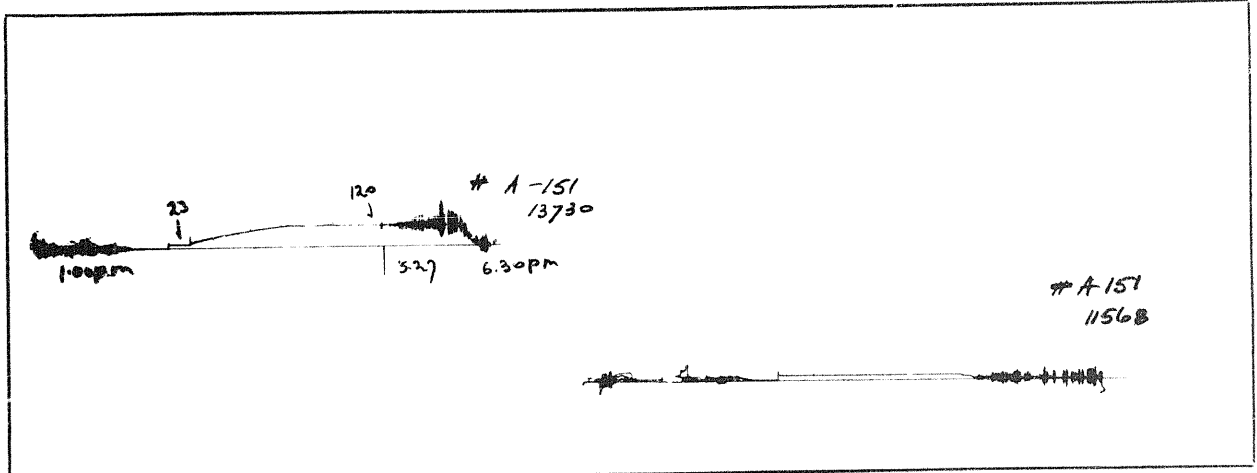
Toolpusher R. Magnan

Drlg. Contractor Regent Rig #21

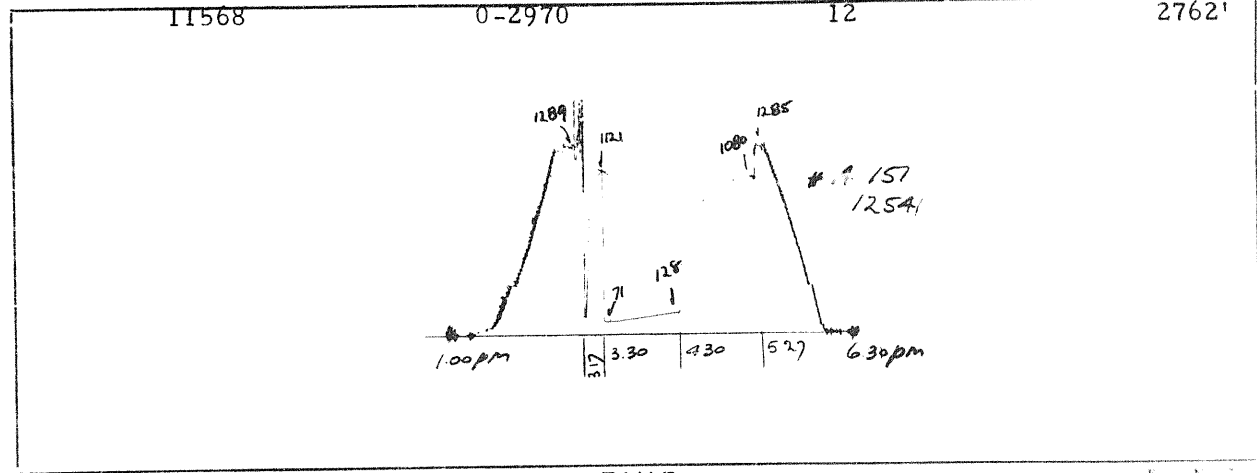
FLUID RECOVERY: 115 ft muddy salt water;

180 ft drilling mud (Ran 656 ft drill

collar above tool, 4 1/2" OD, 2 1/4" ID)



RECORDER No 13730... ELEMENT RANGE 0-2200... P.S.I. CLOCK SPEED: 12 HRS. RECORDER DEPTH 2684'
RECORDER No 12541... ELEMENT RANGE 0-2700... P.S.I. CLOCK SPEED: 12 HRS. RECORDER DEPTH 2701'



TIME

Form No. 1

RECEIVED
SEP 7 1955
DIVISION SERVICES, EDU/ONTARIO

RECEIVED
SEP 7 1955
DIVISION SERVICES, EDU/ONTARIO

T.G. EASTLAND—testers ltd.

R.R. No. 6, NORTH EDMONTON, ALBERTA

TEST No. One.....

Date Aug. 25, 1968.....

Ticket No. A-151.....

DRILL STEM TEST PRESSURE REPORT

WELL NAME SHELL PEEL RIVER Y.T. J-21..... LSD. Y.T. J-21.....

INTERVAL 2720'... 2792' KB..... FORMATION..... B.H. TEMP. °F 107.....

GAUGE No. 12541..... DEPTH OF ELEMENT 2701' KB..... CALIBRATION EQUATION $P = 1367.31 + 25.84$

	Time	T mins.	Pressure psig
Initial Hydrostatic			1289
Initial Shut-in	3:17 pm	0	110
	3:20	3	728
	3:23	6	987
	3:26	9	1077
	3:29	12	1108
	3:30	13	1121

Flowing Pressures ----- F₁ 71
F₂ 128

Final Shut-in	4:30 pm	0	128
	4:33	3	300
	4:36	6	507
	4:39	9	682
	4:42	12	779
	4:45	15	840
	4:48	18	892
	4:51	21	931
	4:54	24	959
	4:57	27	985
	5:00	30	1004
	5:03	33	1019
	5:06	36	1032
	5:09	39	1044
	5:12	42	1044
	5:15	45	1062
	5:18	48	1069
	5:21	51	1073
	5:24	54	1077
	5:27	57	1080

Final Hydrostatic ----- 1285

RECEIVED
SEP 7 1955
DIVISION SERVICES, EDU/ONITM

5244 (Company) DIVISION EDMONTON WELL NAME & LOCATION ST444 PELLER Y.T. J-21 N 66° 30' 31" W 134° 04' 33"
 DATE 8/12/65 EXAMINER PNR ELEVATION 150 AB FIELD OR AREA WILDCAT Y.T.
 FORMATION PEL CORE NO. 1 INTERVAL 2017-2027 RECOVERY 10.3' CORE SIZE 2 1/8"

From To	ROCK DESCRIPTION (in following order)						SHOWS (in following order)				STRUCTURE (in following order)			COMMENTS		
	Lithology	Archite Descr.	Grain Size	Cement Type	Consol- idation	Porosity %	Stain	Fluor.	Cut Fluor.	Cut Fluor.	Gas	Dip of Beds	Angle		Fractures Freq.	Open or Closed
2017/06 2017/6	SS w/ alternating shale lam						nil	nil	nil	nil	nil	6°				EVIDENCE OF TURBIDITE STRUCTURE
2017/09 2018/5	DK GR. SH W SS LAM															
2018/07 2018/7	DK GR. ARGILLACEOUS SILTST															
2018/10/5 2019/2/1	DK GR. SH.															
2019/2/01 2019/3	SS SA. VFF SH C NVP															
2019/3/04 2019/3	DK GR SH															
2019/7/02 2019/9	SILT GRADATING INTO SS															
2019/10/1 2020/1	DK GR SH W/ SS LAMINAE															
2020/0/19 2021/9	SS SA VFF SH C NVP															
2021/9/05 2022/4	SS W/ SHALE LAMINAE															
2022/4/08 2023/2	DK GR. SH. W/ SS LAMINAE															

NOTE: GRAPHICAL PLOT OF DRILLING TIME ON 5 INCH TO 100 FT SCALE IS TO BE ATTACHED TO CORE REPORT.

DATE 8/12/65

CORE #1

2017-2027

12" DIA. SPACERS	TIME MIN.	WOR.	2 1/2" DIA. PUMP
2017 - 2018	12	46000	60
2018 - 2019	14		✓
2019 - 2020	19		✓
2020 - 2021	19		✓
2021 - 2022	26		✓
2022 - 2023	17		✓
2023 - 2024	11		✓
2024 - 2025	14		✓
2025 - 2026	13		✓
2026 - 2027	13		✓

DOUBLE SHOT

2017.12

2017.12

TALLY

378'

372'

CORRECT DEPTH 2017.

PROD

WT 8.7#/gal

10' CONCRETE SECS.

185'

13.5'

13.5'

13.5'

13.5'

13.5'



DOUBLE FIN 2 1/2"
 TAPER TO 3 1/2"
 SAFETY JO

$\phi = 4 1/2$

BIT SUB

4 1/2" x 2 1/2"

W. H. Williams

8/12/65

DIVISION EXAMINATION WELL NAME & LOCATION W. CO. 2149

DATE 1/17/54 EXAMINER PPM ELEVATION 1280 FIELD OR AREA W. CO. 2149

FORMATION Dev CORE NO. B INTERVAL 3934-3944 RECOVERY 10.7' CORE SIZE 2 1/2"

From To	ROCK DESCRIPTION (in following order)				SHOWS (in following order)			STRUCTURE (in following order)			COMMENTS						
	Lithology	Archie Des't.	Grain Size	Cement Type	Consol-Idation	Porosity %	Stain	Floor.	Cut	Cut Floor.		Gas	Dip of Beds	Fractures Angle	Freq.	Open or Closed	
3934 3944	<p><u>1/17</u> DARK GREY TO BLACK SHALE INTERBEDDED WITH LAMINAE OF MED - DARK GREY CALCINIC SANDSTONE & LAMINAE OF MED - DARK GREY SANDSTONE & LAMINAE OF MED - DARK GREY SANDSTONE & LAMINAE</p>																
																	<p>NOLE DEFINITION > 10° SOME MINOR FRACTURES OF THIS SIZE INDICATED</p>

NOTE: GEOPHICAL PLOT OF DRILLING TIME ON 5 INCH TO 100 FT SCALE IS TO BE ATTACHED TO CORE REPORT

SHEET 1 OF 1 R J-2

CORE #1

3934-3944

DEPTH	7" DIA THICKNESS	WOB "M"	1	THICK THICKS
3934 - 3935	18	4	55	100 (pin)
35 - 36	17	4-6	55	750
36 - 37	10	8	50	✓
37 - 38	6		75	✓
38 - 39	9			✓
39 - 39.10	9			✓
39.10 - 41	10			✓
41 - 42	10			✓
42 - 43	1			✓
43 - 3944	11			✓

SUM 3935.65

TOTAL 3934.26

1.39 (1" NO CORE)

CORE #1
3934
3944



DOUBLE PIN JOINT TAPER (2 INCH) SAFETY JT. (if see CORE #1)

BIT SUB.
BIT.

R. L. Dickerson
8/25/65

ATLAS TESTING LABORATORIES LTD.

INDUSTRIAL AND RESEARCH CHEMISTS
TESTING AND INSPECTION SERVICES

7911 ARGYLL ROAD
EDMONTON, ALBERTA

August 24, 1965.

Shell Canada Limited,
P.O. Box 186,
Edmonton, Alberta.

Dear Sirs:

The water samples received August 23, 1965, tested as follows:

Lab No. 1256

D.S.T. No. 1

<u>Sample No.</u>	<u>Resistivity - ohms/m²m</u>	<u>Cl ppm</u>
1.-	16.60	9
2.-	3.20	380
3.-	0.53	7000
4.-	0.28	14400
5.-	0.42	9300



Yours very truly,
ATLAS TESTING LABORATORIES LTD.,

W.L. Inglis
W.L. Inglis, P.Eng.

Shell Peel R. Y.T. J 21

N 66° 30' 31.9"
W 134° 0.4' 32.3"
KB 150' G. L. 137
REGENT #21

WLI/bb

DST #1
2720-2792. T.O. 60 mins. ISI = 15 mins,
FSI = 60 mins. WAB steady for 55 mins then
decreasing to nil.
Recovery: 180' (0.9 bbls) drlg mud, 115'
(0.6 bbls) muddy salt water.

Pressures:
ISIP 1161 psig
IFP 90 psig
FFP 150 psig
FSIP 1118 psig
HMH 1333 psig
Bomb depth = 2701'

RECEIVED
ATLAS TESTING LABORATORIES LTD.

DIVISION SERVICES, EDMONTON

W.L. Inglis

SHELL, PEEL RIVER J-21 (NO. 1)

66° 30' 31.9" N.
134° 04' 32.3" W.

Sidewall Core

1099	Siltstone	Medium grey, quartzitic, fissile, 30% argillaceous content, laminated.
1132	Shale-Siltstone	Dark grey, 50% siltstone, interlaminated with 50% shale.
1174	Shale	Very dark grey, 20% silt content, micaceous, bedding indistinct.
1196	Shale	Very dark grey, 20% silt content, micaceous, bedding indistinct.
1302	Shale	Medium to dark grey, 20% silt content, micaceous, distinctly laminated.
1406	Shale	Medium to dark grey, bedding indistinct.
1491	Sandstone	White, very fine to medium grained, lithic, very hard, no visible porosity, bedding indistinct.

Sidewall Core

1617	Shale	Dark grey, 10% siliceous content, bedding indistinct.
1707	Shale	Dark grey, bedding indistinct.
1793	Sandstone	Light grey, very fine to medium grained, lithic, very hard, no visible porosity, bedding indistinct.
1891	Shale	Dark grey, poorly laminated.
2067	Shale	Dark grey, 10% lithic silt content, bedding indistinct.
2207	Shale	Dark grey, 20% lithic silt content, bedding indistinct.
2317	Shale	Dark grey, 20% lithic silt content, laminated.
2405	Shale	Dark grey, bedding indistinct.
2493	Shale	Very dark grey, 10% lithic silt content, poorly laminated.
2591	Shale- Siltstone- Sandstone	Dark grey, 50% lithic siltstone, to very fine grained sandstone, 50% shale, very hard, churning, no visible porosity.
2598	Shale- Siltstone- Sandstone	Dark grey, 50% lithic siltstone to very fine grained sandstone, 50% shale, contorted bedding- perhaps primary. No visible porosity.

SHELL, PEEL RIVER J-21 (NO. 1)

66° 30' 31.9" N.
134° 04' 32.3" W.

Sidewall Core

1099	Siltstone	Medium grey, quartzitic, fissile, 30% argillaceous content, laminated.
1132	Shale-Siltstone	Dark grey, 50% siltstone, interlaminated with 50% shale.
1174	Shale	Very dark grey, 20% silt content, micaceous, bedding indistinct.
1196	Shale	Very dark grey, 20% silt content, micaceous, bedding indistinct.
1302	Shale	Medium to dark grey, 20% silt content, micaceous, distinctly laminated.
1406	Shale	Medium to dark grey, bedding indistinct.
1491	Sandstone	White, very fine to medium grained, lithic, very hard, no visible porosity, bedding indistinct.

Sidewall Core

1617	Shale	Dark grey, 10% siliceous content, bedding indistinct.
1707	Shale	Dark grey, bedding indistinct.
1793	Sandstone	Light grey, very fine to medium grained, lithic, very hard, no visible porosity, bedding indistinct.
1891	Shale	Dark grey, poorly laminated.
2067	Shale	Dark grey, 10% lithic silt content, bedding indistinct.
2207	Shale	Dark grey, 20% lithic silt content, bedding indistinct.
2317	Shale	Dark grey, 20% lithic silt content, laminated.
2405	Shale	Dark grey, bedding indistinct.
2493	Shale	Very dark grey, 10% lithic silt content, poorly laminated.
2591	Shale-Siltstone-Sandstone	Dark grey, 50% lithic siltstone, to very fine grained sandstone, 50% shale, very hard, cherted, no visible porosity.
2598	Shale-Siltstone-Sandstone	Dark grey, 50% lithic siltstone to very fine grained sandstone, 50% shale, contorted bedding- perhaps primary. No visible porosity.

Sidewall Core

2691	Shale	Dark grey, 10% lithic silt content, bedding indistinct.
2804	Shale	Dark grey, mudstone?
2990	Shale	Dark grey, bedding indistinct.
3205	Shale	Medium to dark grey, poorly laminated.
3497	Shale	Dark grey, poorly laminated.
3979	Shale	Medium to dark grey, bedding indistinct.