

SCHLUMBERGER

SCHLUMBERGER OF CANADA Calgary Alberta

BOREHOLE COMPENSATED SONIC LOG

PROVINCE YUKON TERRITORY
 FIELD WILDCAT
 WELL SHELL PEEL RIVER YT-K-76
 COMPANY SHELL CANADA LIMITED

COMPANY SHELL CANADA LIMITED
 WELL SHELL PEEL RIVER YT-K-76
 FIELD WILDCAT
 PROVINCE YUKON TERRITORY
 LOCATION 66° 25' 35.4" N
 134° 14' 07.9" W
 Permanent Datum GL 238.0
 Log Measured from KB 12.8 ft. Above Perm. Datum
 Other Services: IES, SRS, FDC-G
 ELEV. KG 250.8
 GL 238.0
 CBF

Date	20 NOV 65
Run No.	ONE
First Reading	4531
Last Reading	960
Feet Measured	3571
Depth Reached	4538
Bottom Driller	4550
Csg. SOC	485
Csg. Driller	488
Mud Nature	GEL
Dens.	9.9
Visc.	400+
Mud pH	9.5
Water Loss	4.8
Res. @ BHT	1.74 @ 60 of
Rml	0.90 @ 116 of
Rmc	1.50 @ 59 of
	1.93 @ 58 of
Bit Size	6 3/4" @
Span	2'
Op. Rig Time	3 HRS
Truck No.	SKW M 1576
Recorded By	PRAETHER
Witness	NEDHAM

1 of

6DEC65 CAL AT

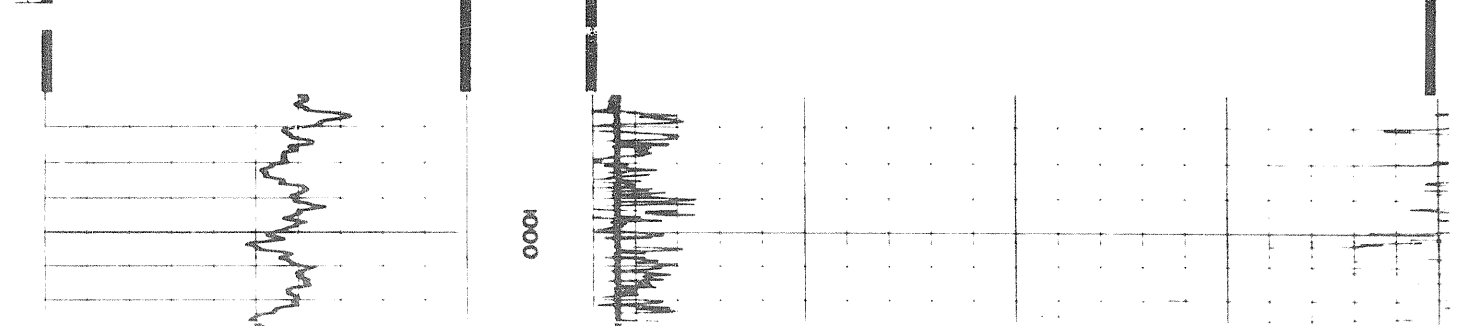
REMARKS
 Drilling Stopped 1800 / 17th : Circulation Stopped 1800 / 19th : Tool on Bottom 0230 / 20th : 1st Run Service Order # 29590 B.H.T. of

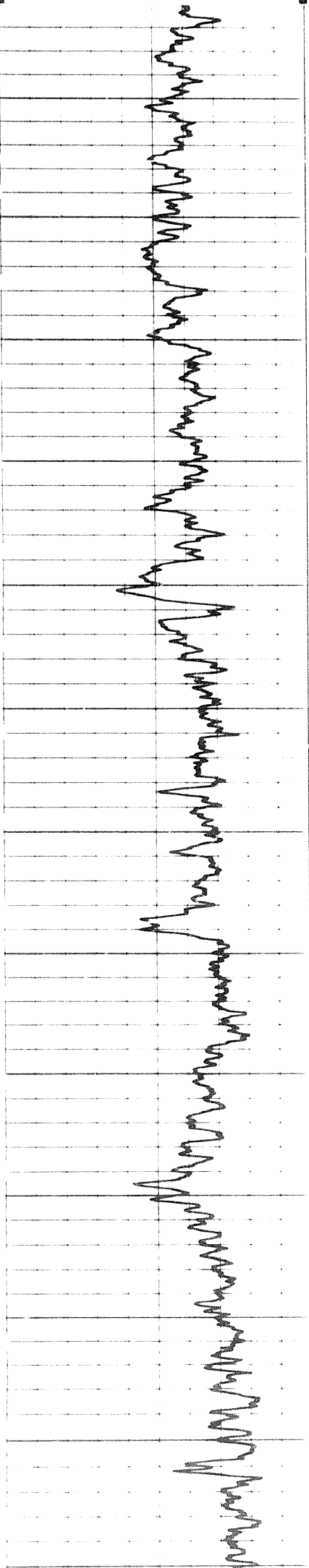
Caliper No. -
 Cartridge No. A 79
 Panel No. A 53
 Sonde No. A 93
 Centralizer Type -
 NOTE: SONIC NOISE SPIKES ARE DUE TO INADEQUATE CENTRALIZATION IN A HIGHLY DEVIATED AND ROUGH BOREHOLE. HIGH VISCOSITY AND HOLE SIZE LIMIT THE USE OF TOOL CENTRALIZERS.

GAMMA RAY CALIBRATION:

Background CPS.	Test Source CPS.	Galv. Increase Divisions	Panel Sens. Tap for Cal.
50	500	8.25	500

GAMMA RAY API UNITS	DEPTHS	SONIC INTERVAL TRANSIT TIME microseconds per foot
Sens. 300 T.C. 2 Zero 0 div. to left	100	70 40
120 240	160	130 100





1000

1100

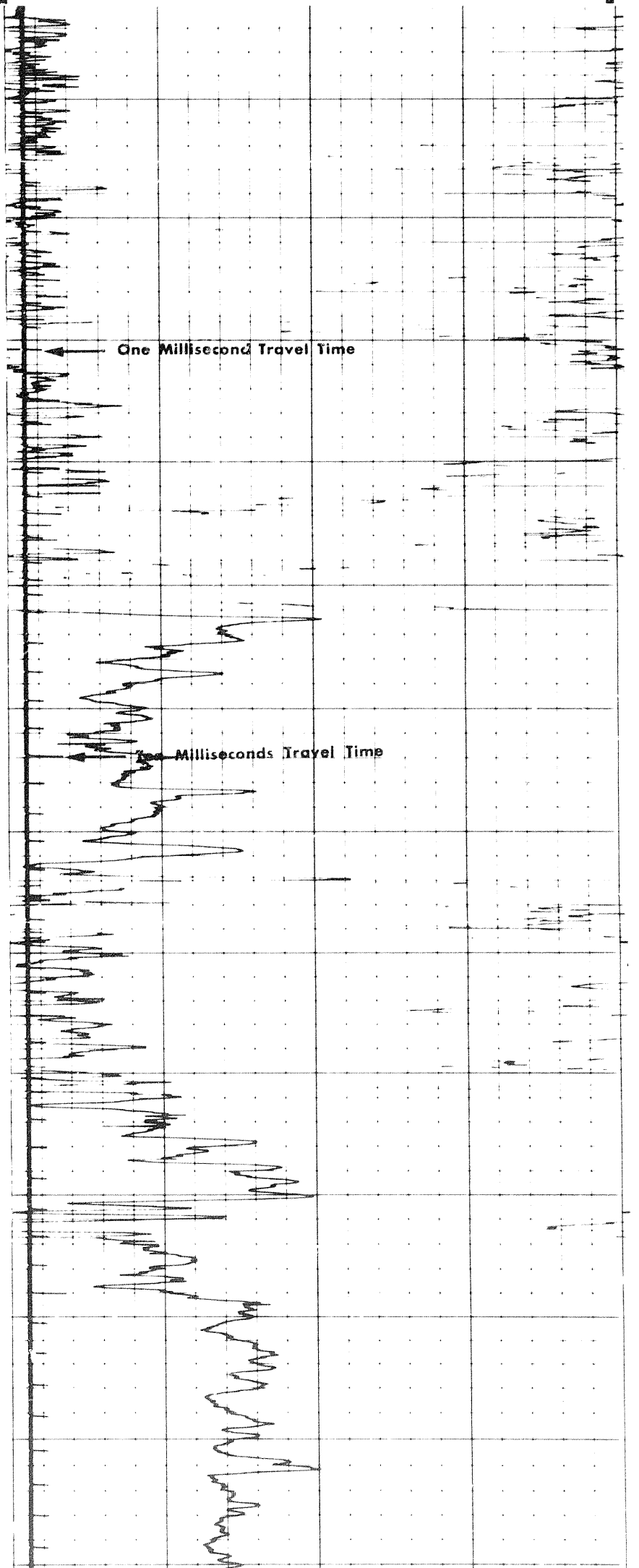
1200

1300

1400

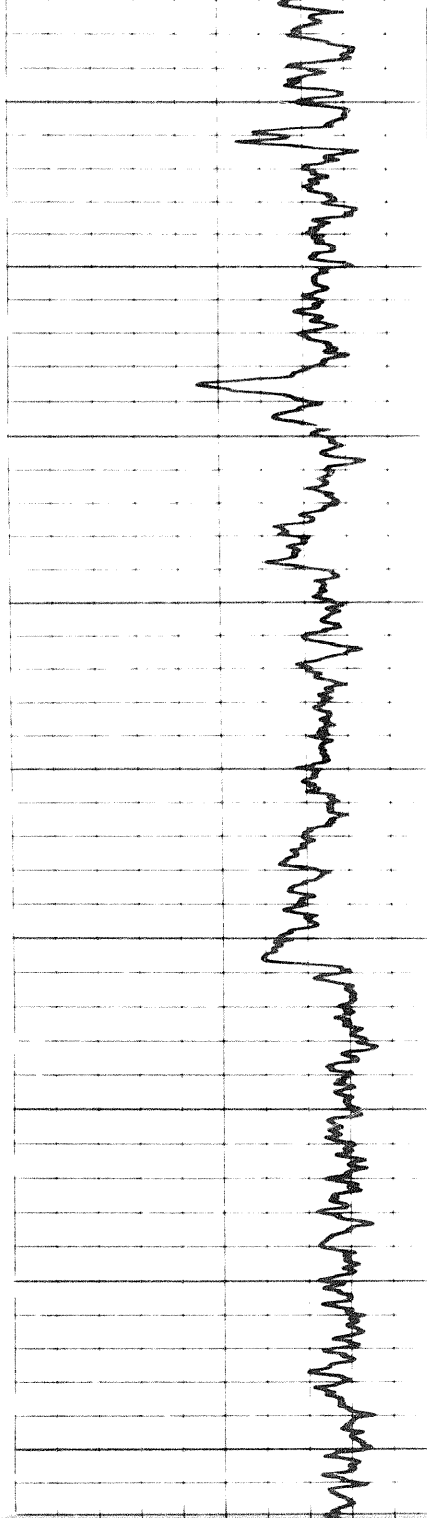
1500

1600



One Millisecond Travel Time

Milliseconds Travel Time

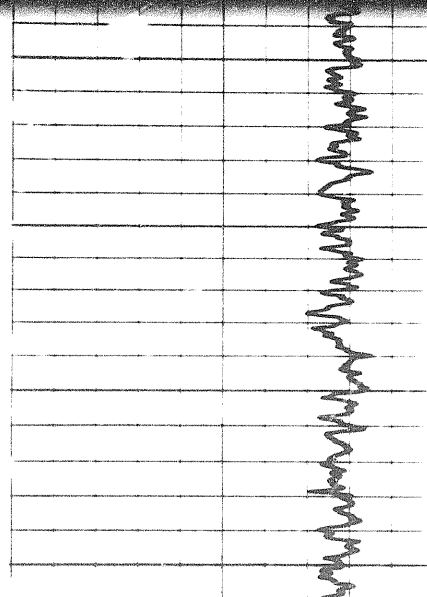
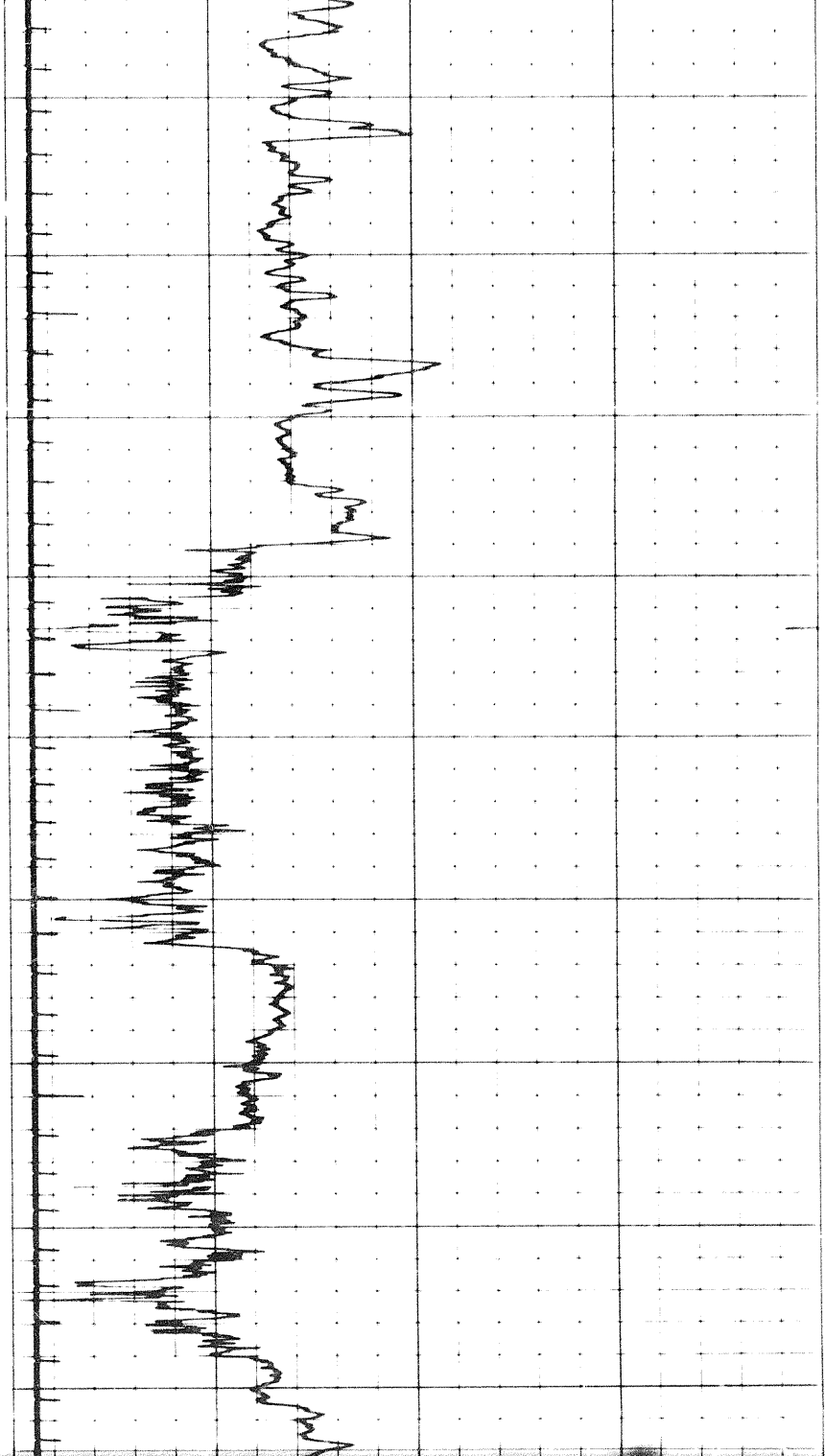


1600

1700

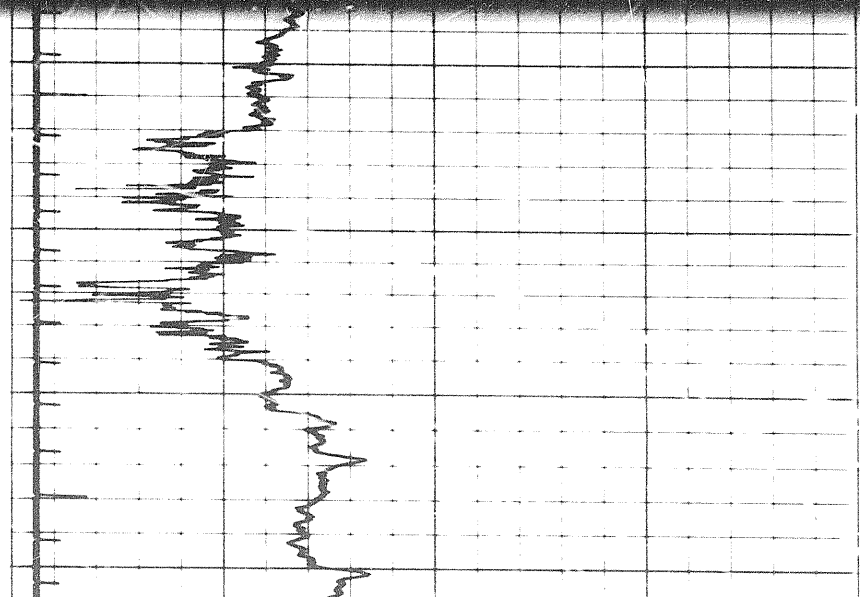
1800

1900

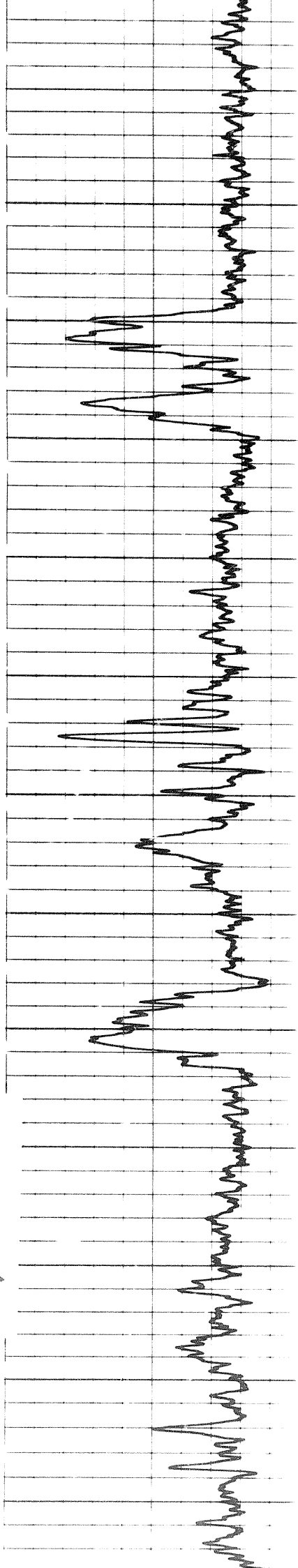


1900

2000



207



2000

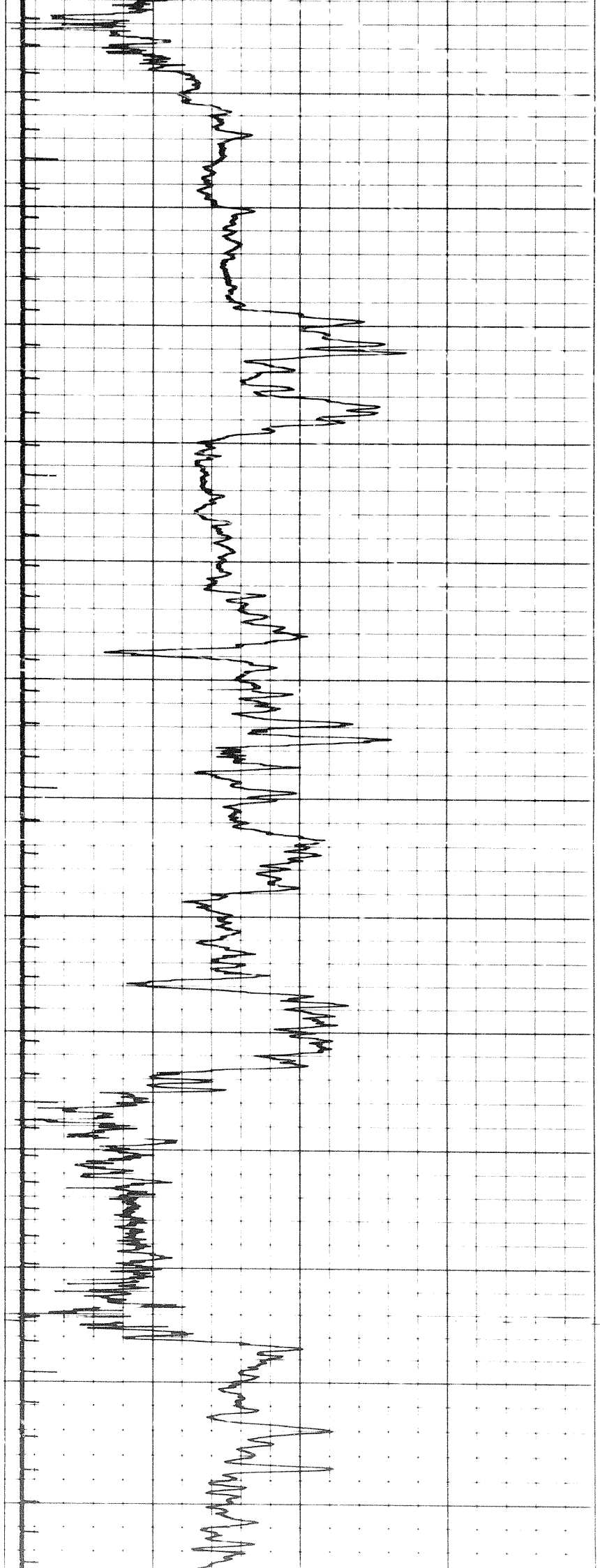
2100

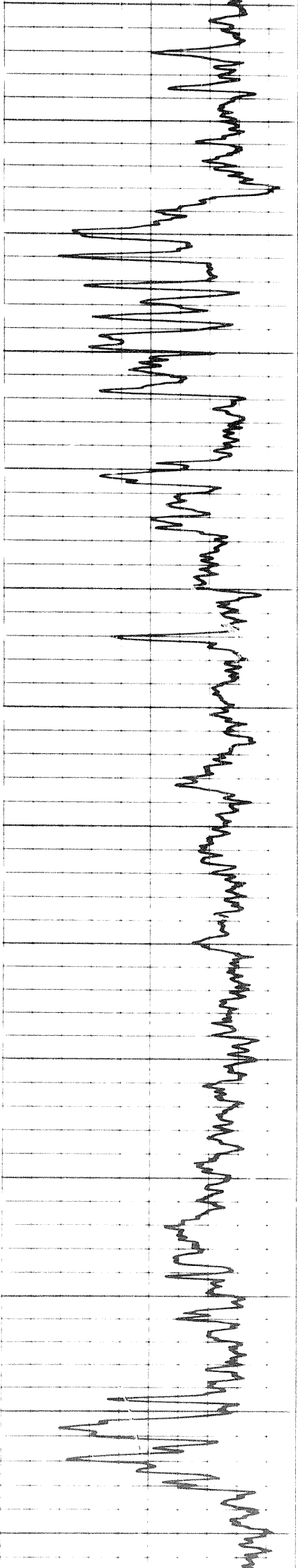
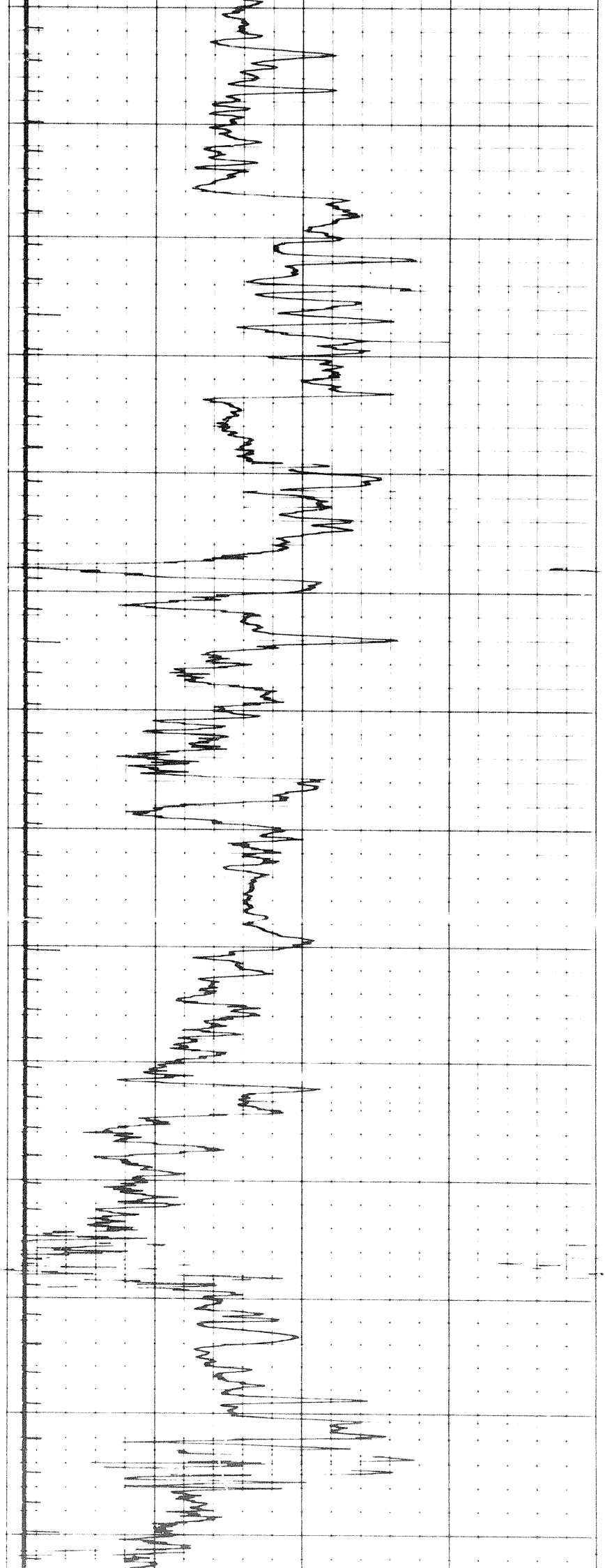
2200

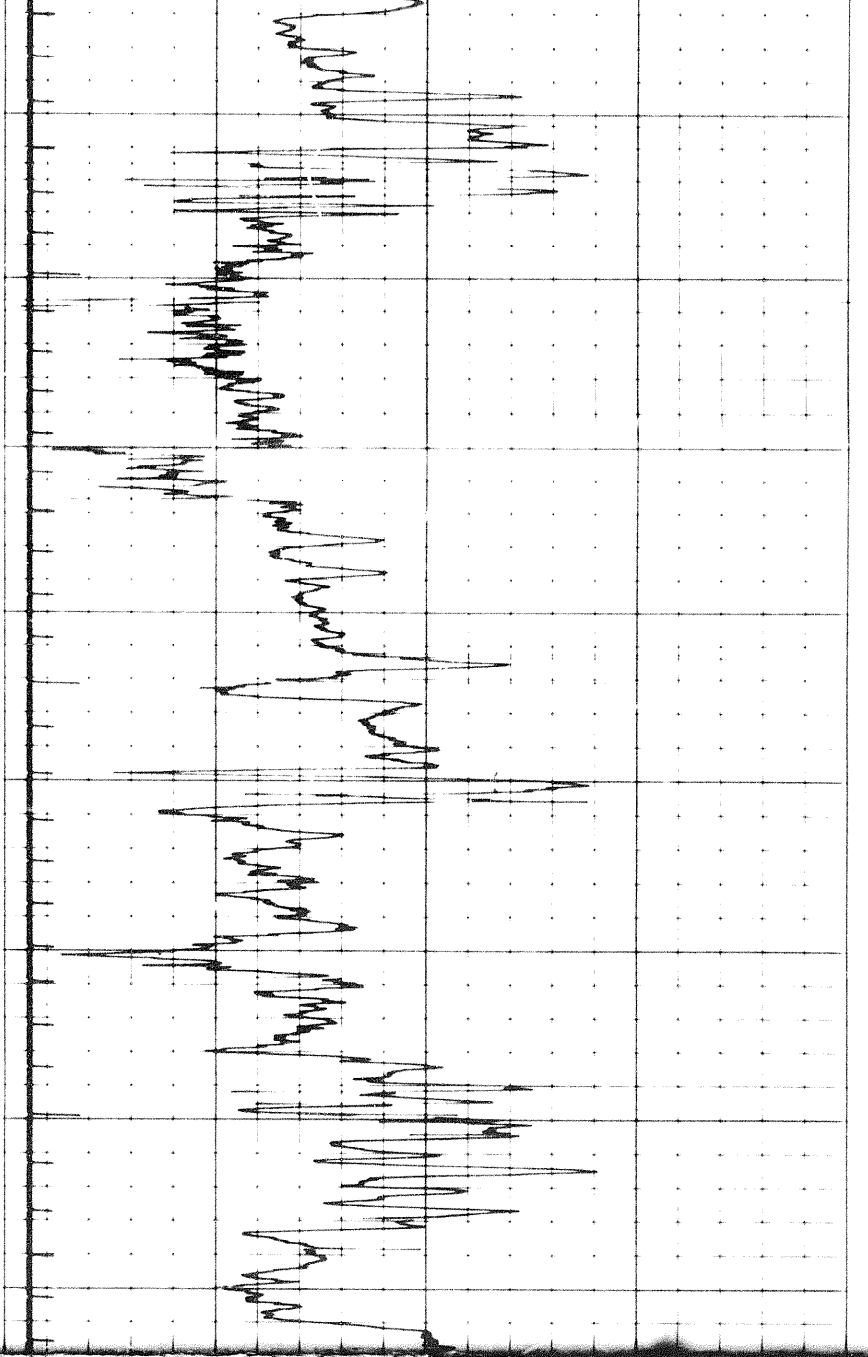
2300

2400

2500





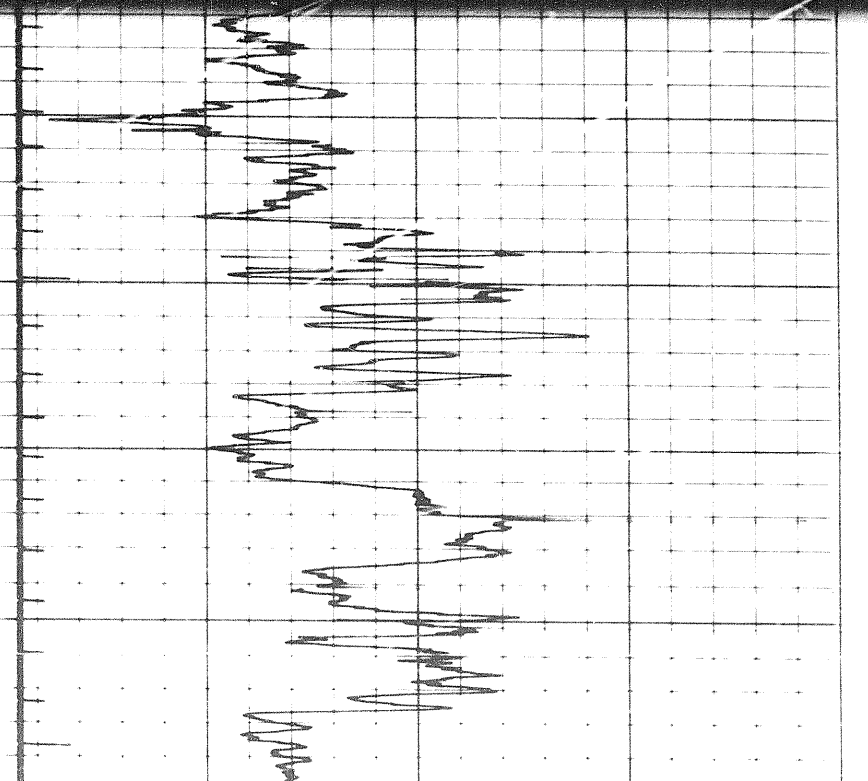
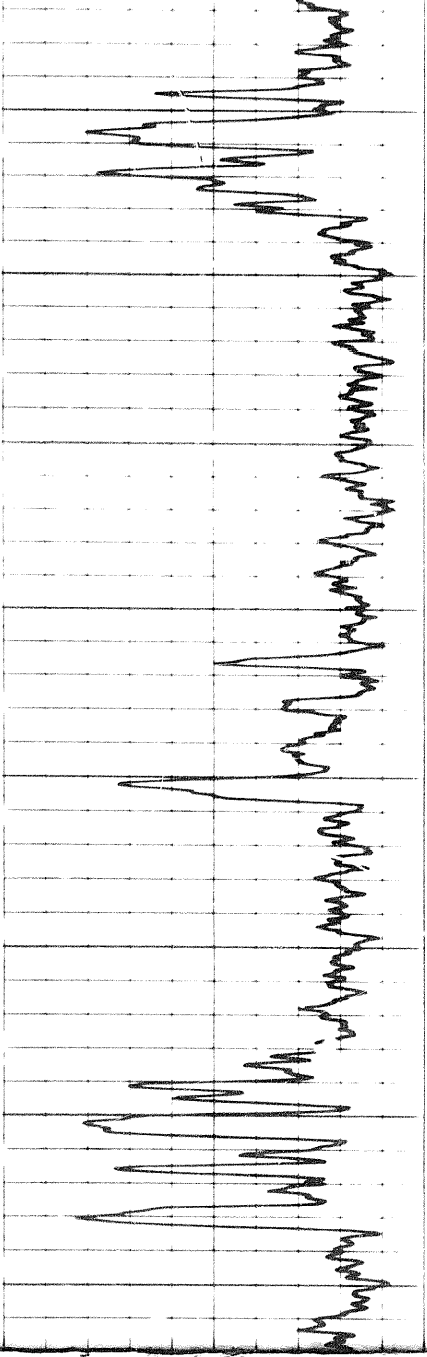


3100

3200

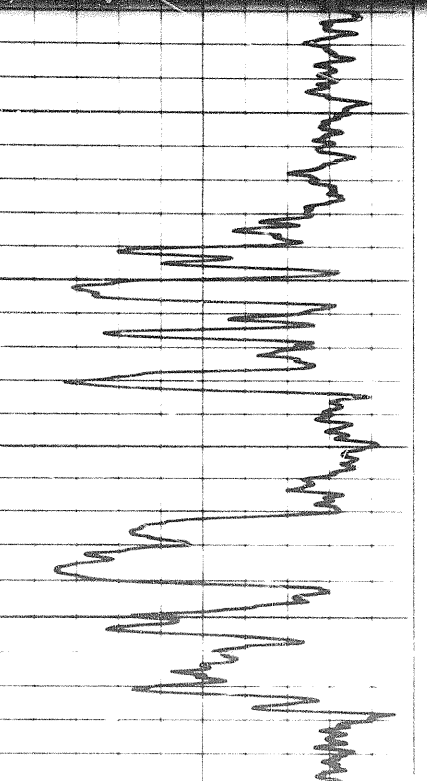
3300

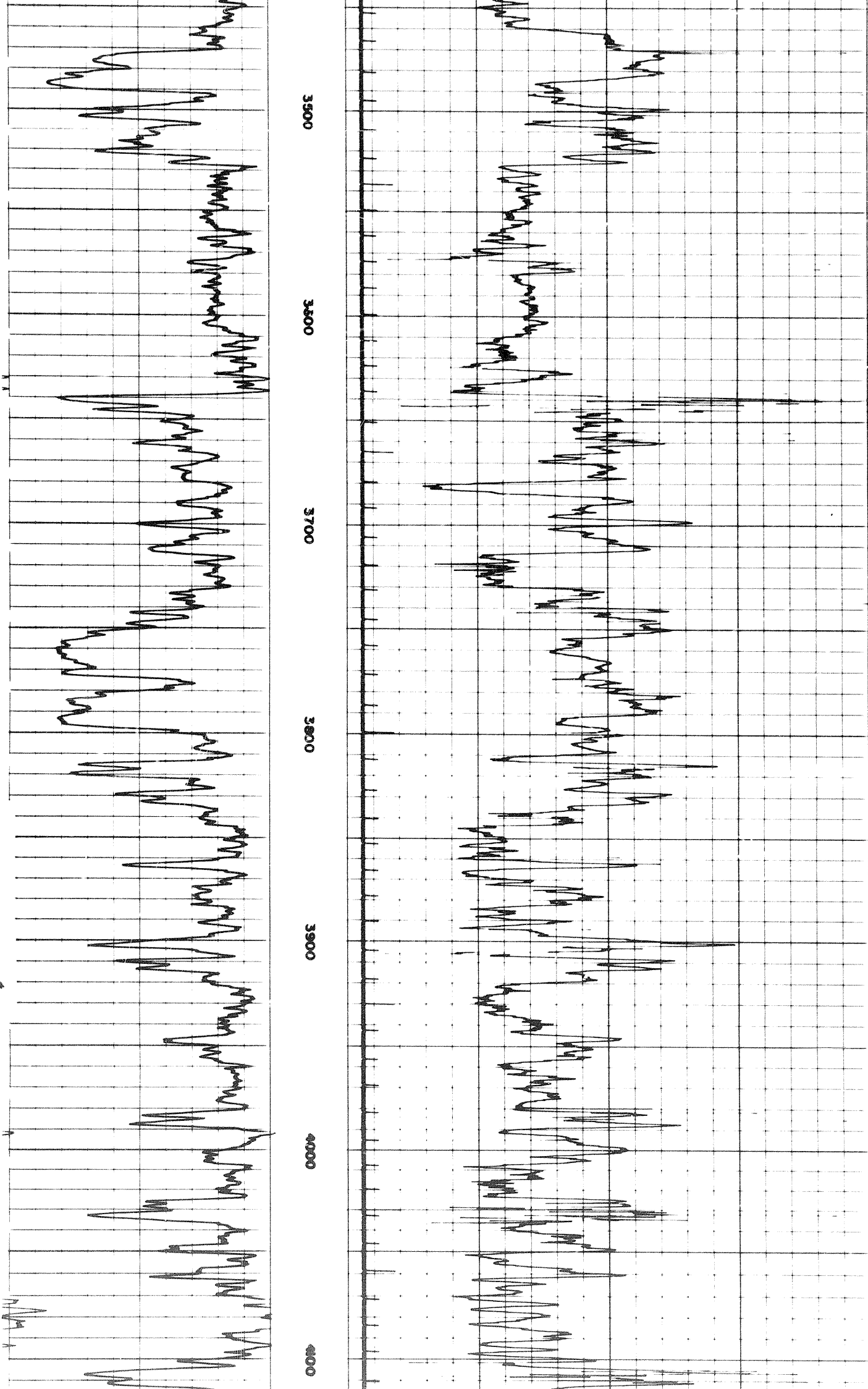
3400



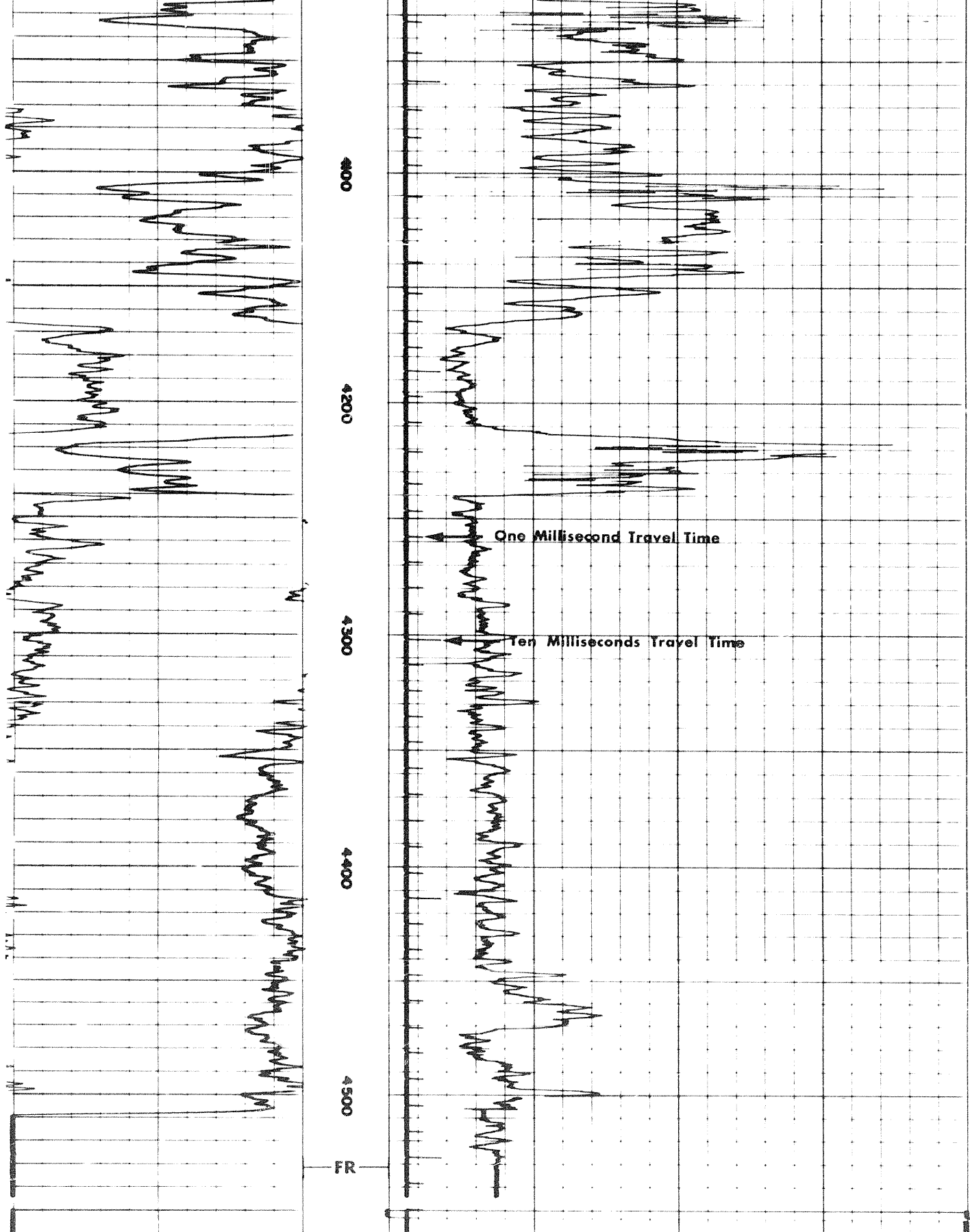
3400

3500





3 of



← Speed in FPM →	Sens. 300	T.C. 2	
	Zero 0	div. to left	120
	120		240

160	130	100
100	70	40

GAMMA RAY API UNITS	DEPTHS	SONIC INTERVAL TRANSIT TIME microseconds per foot
------------------------	--------	---

Sens.	300	T.C.	
Zero	0	div. to left	
			120
			240

160	130	100
100	70	40

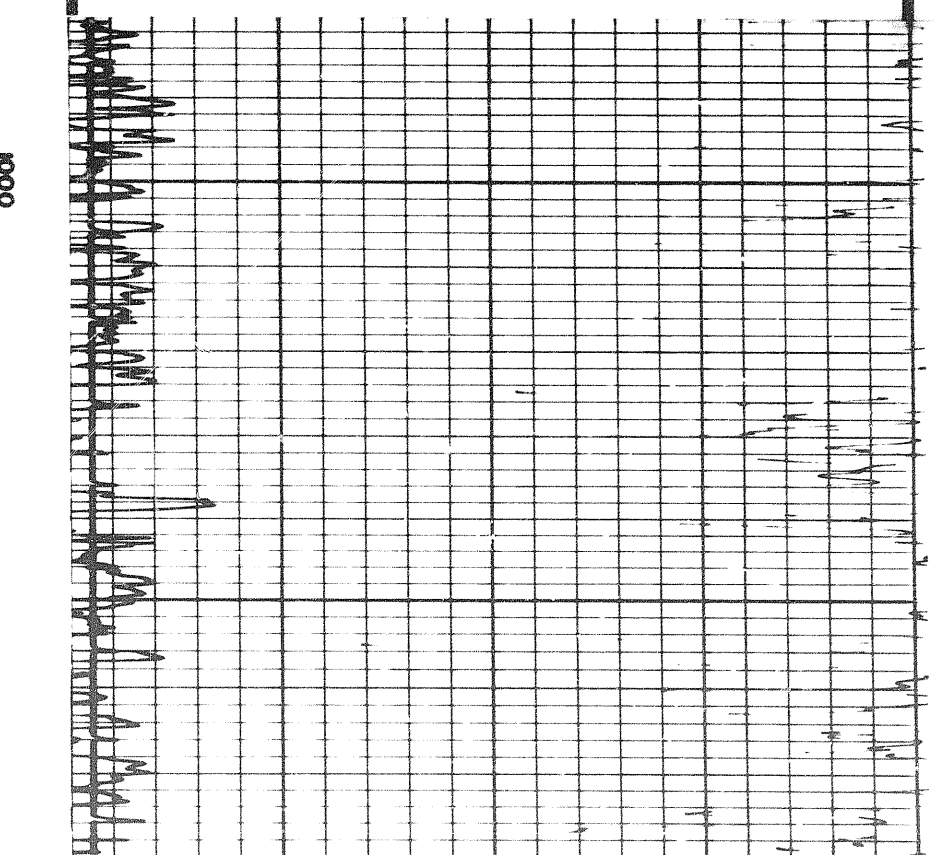
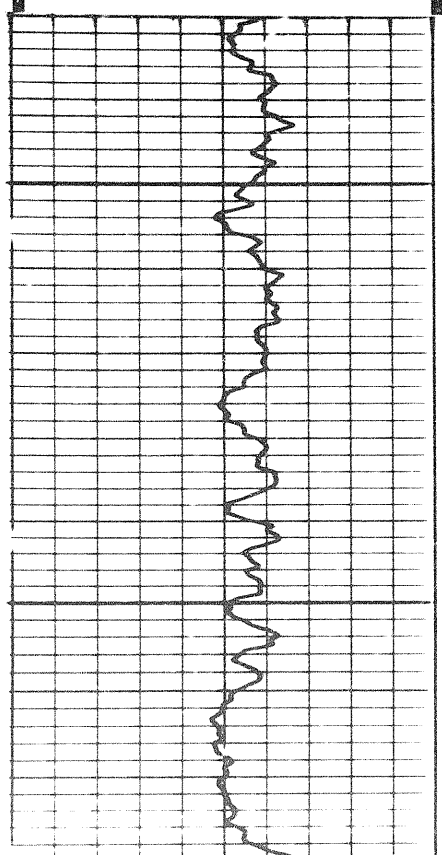
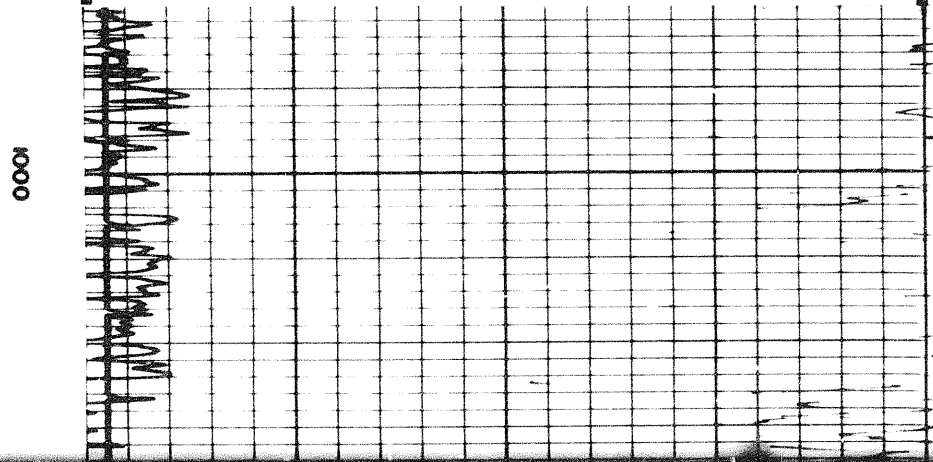
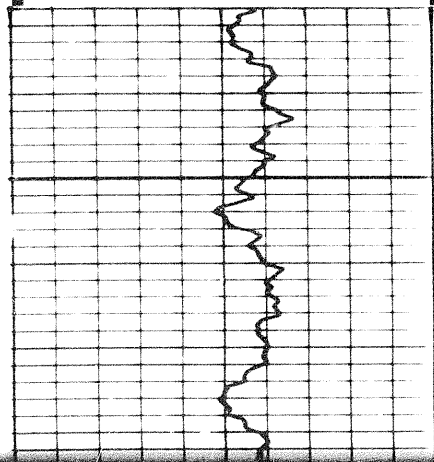
GAMMA RAY API UNITS	DEPTHS	SONIC INTERVAL TRANSIT TIME microseconds per foot
------------------------	--------	---

DETAIL LOG
5" = 100'

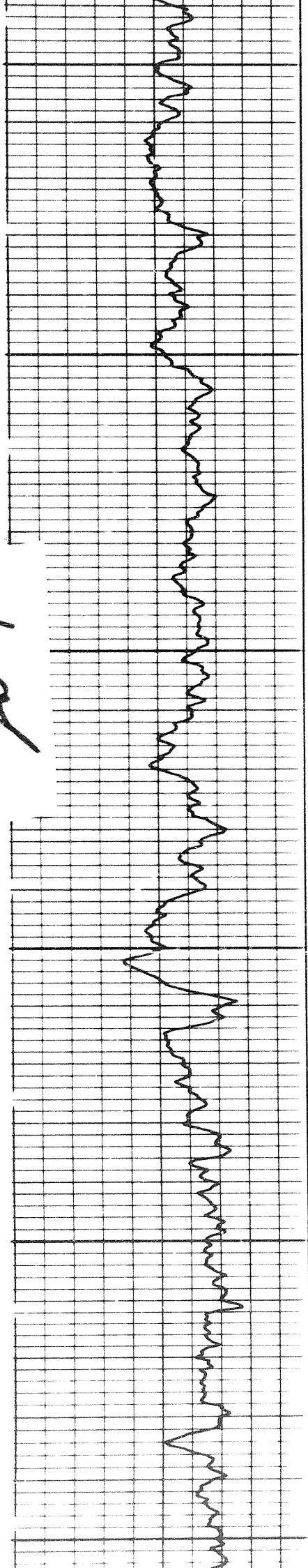
GAMMA RAY API UNITS	DEPTHS	SONIC INTERVAL TRANSIT TIME microseconds per foot
------------------------	--------	---

Sens.	300	T.C.	2
Zero	0	div. to left	
			120
			240

100	70	40
160	130	100



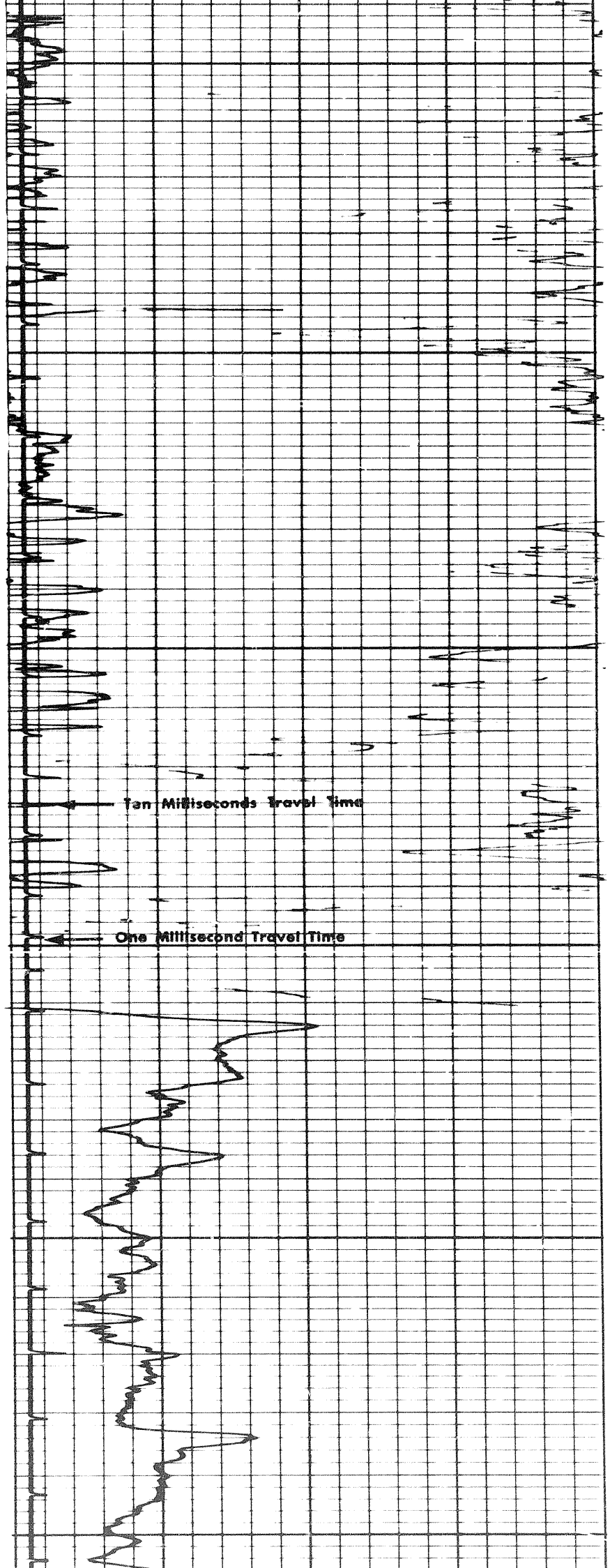
4 of

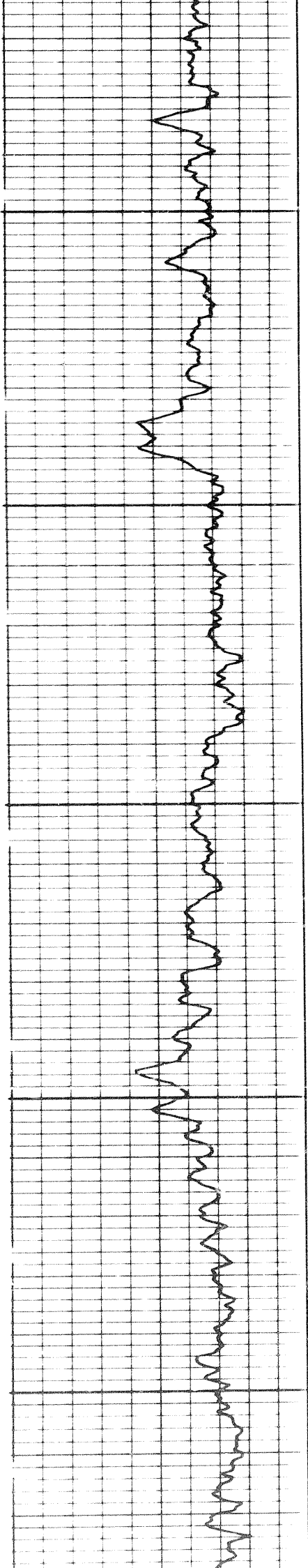


1100

1200

1300

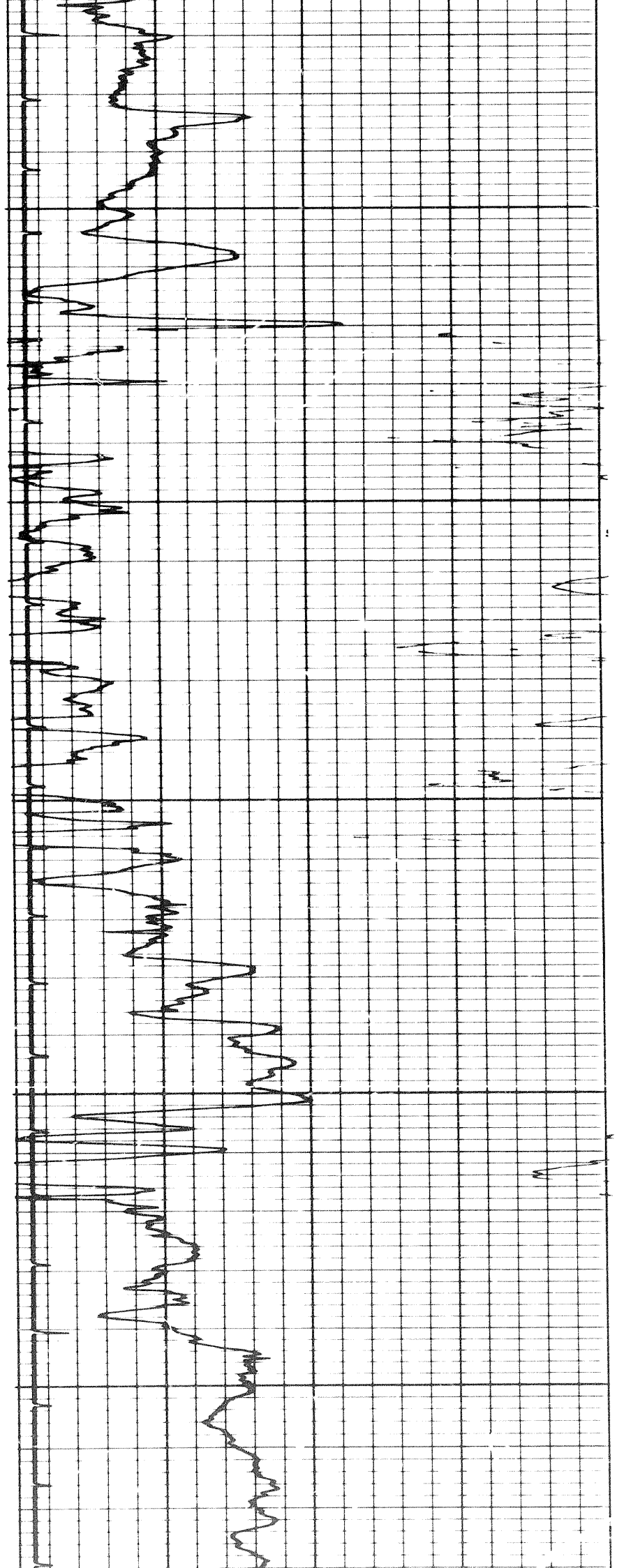




1300

1400

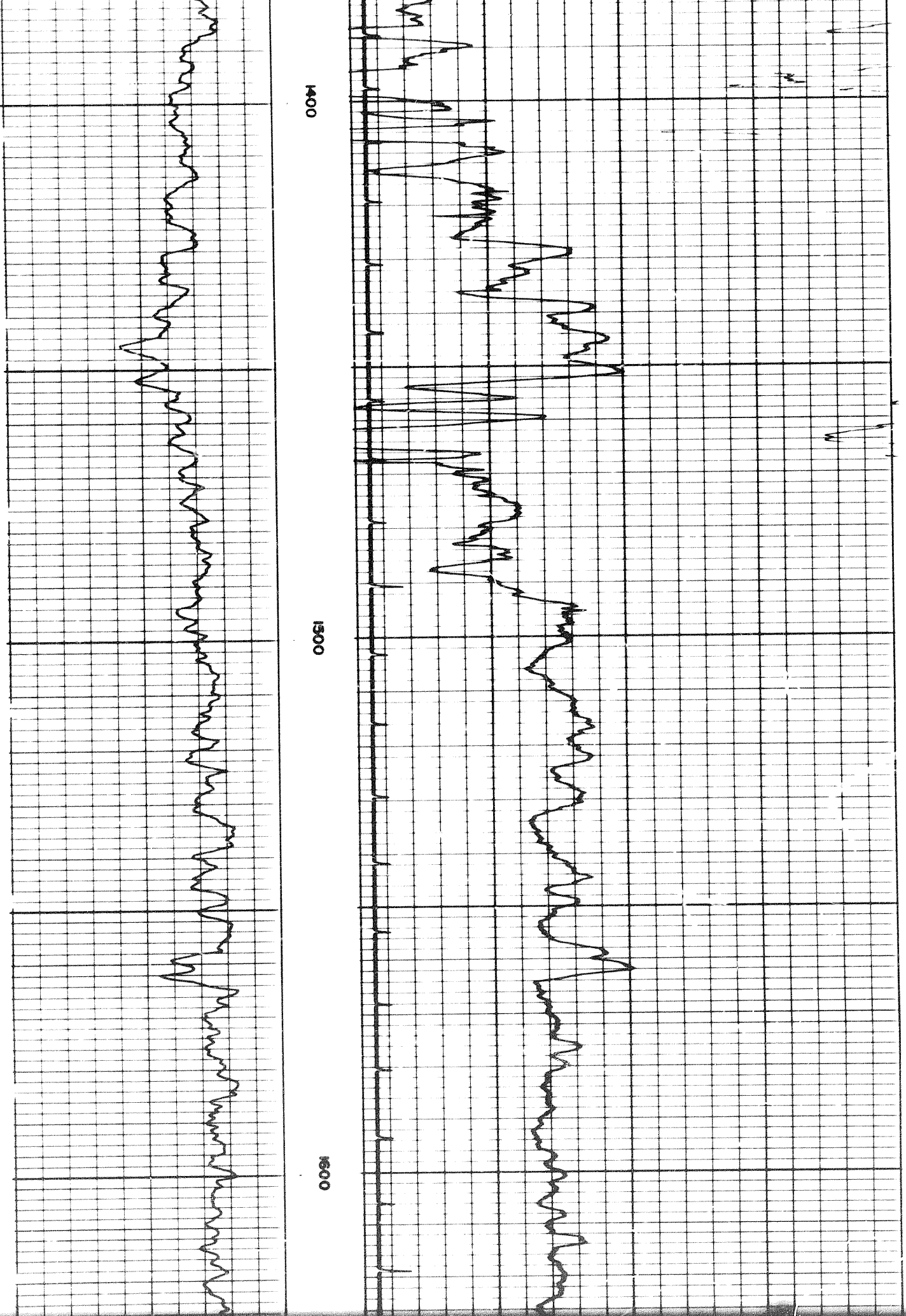
1500



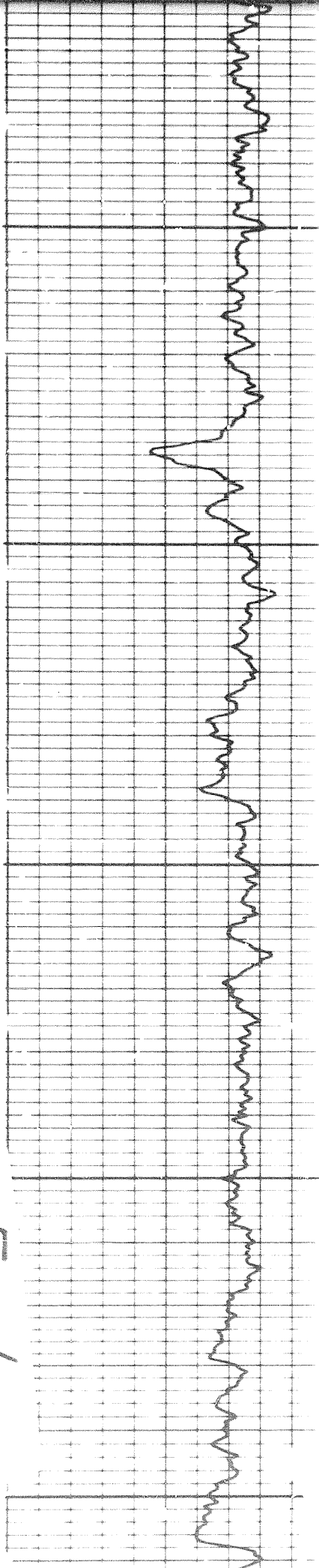
1400

1500

1600



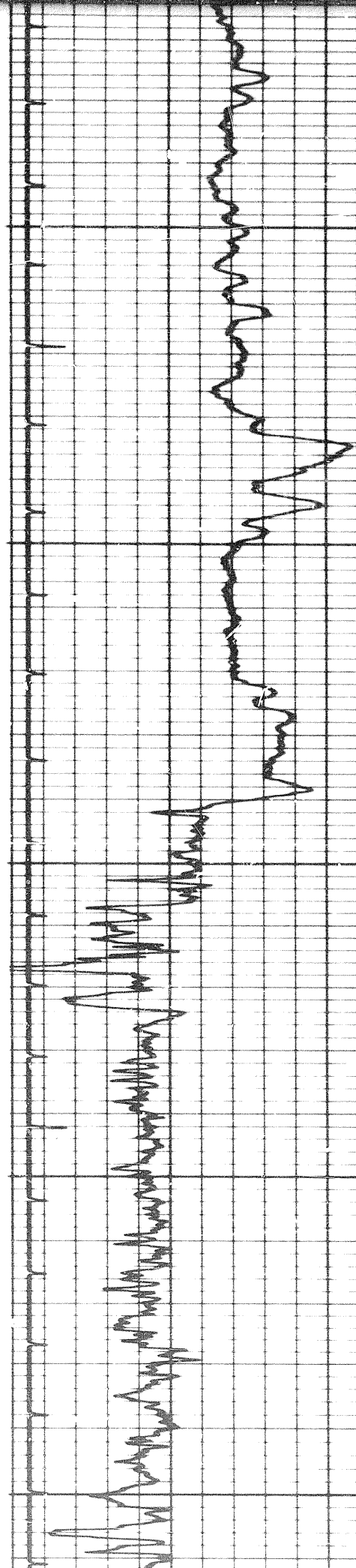
5 of



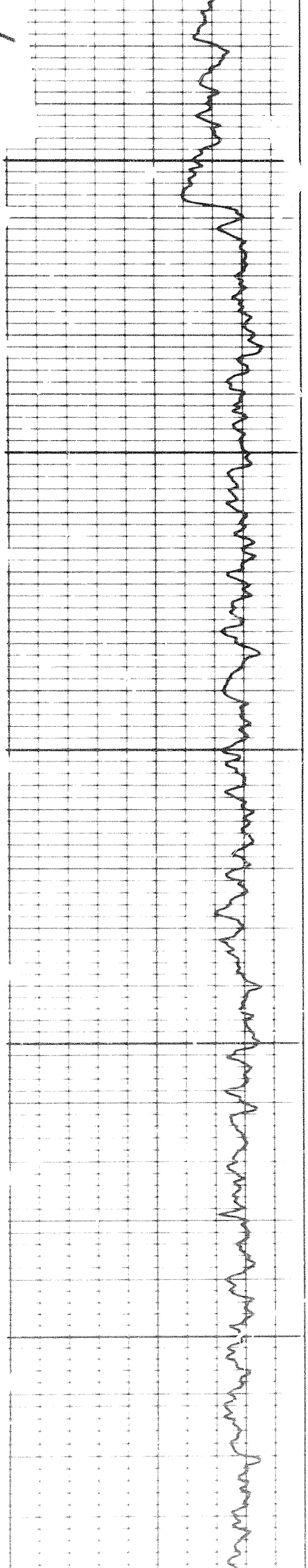
1600

1700

1800



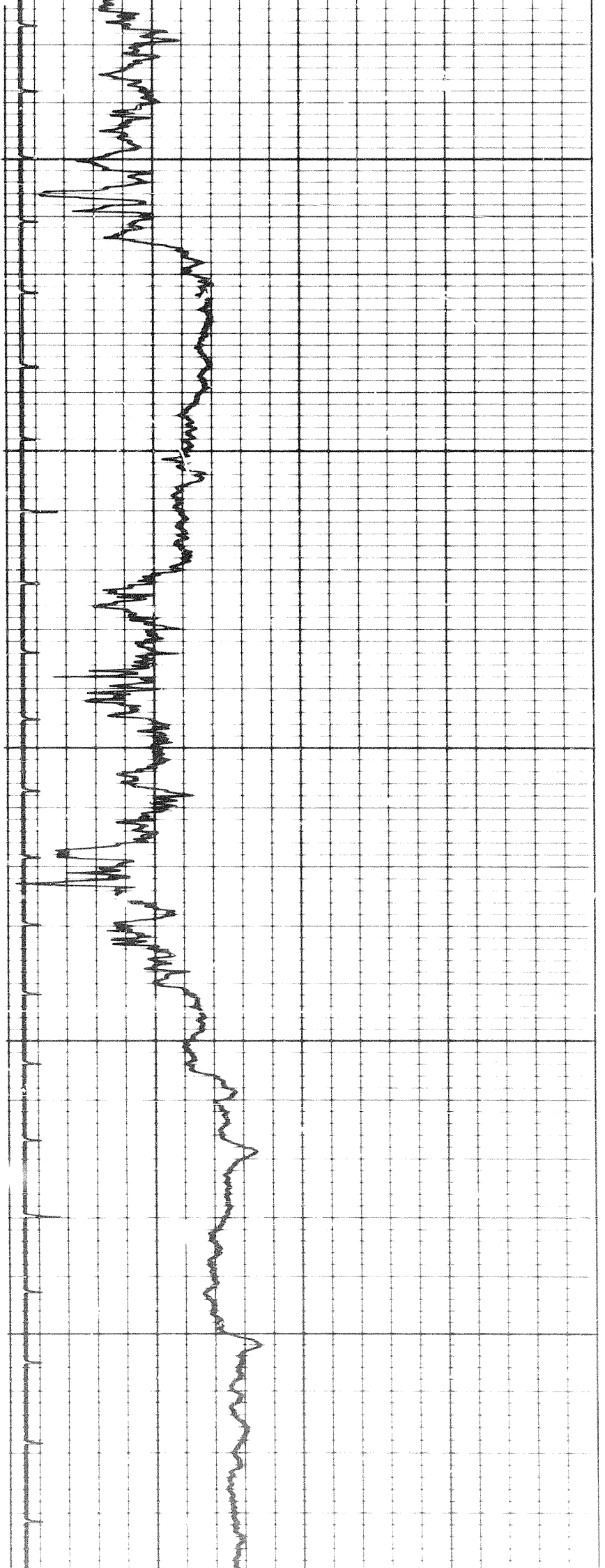
ft

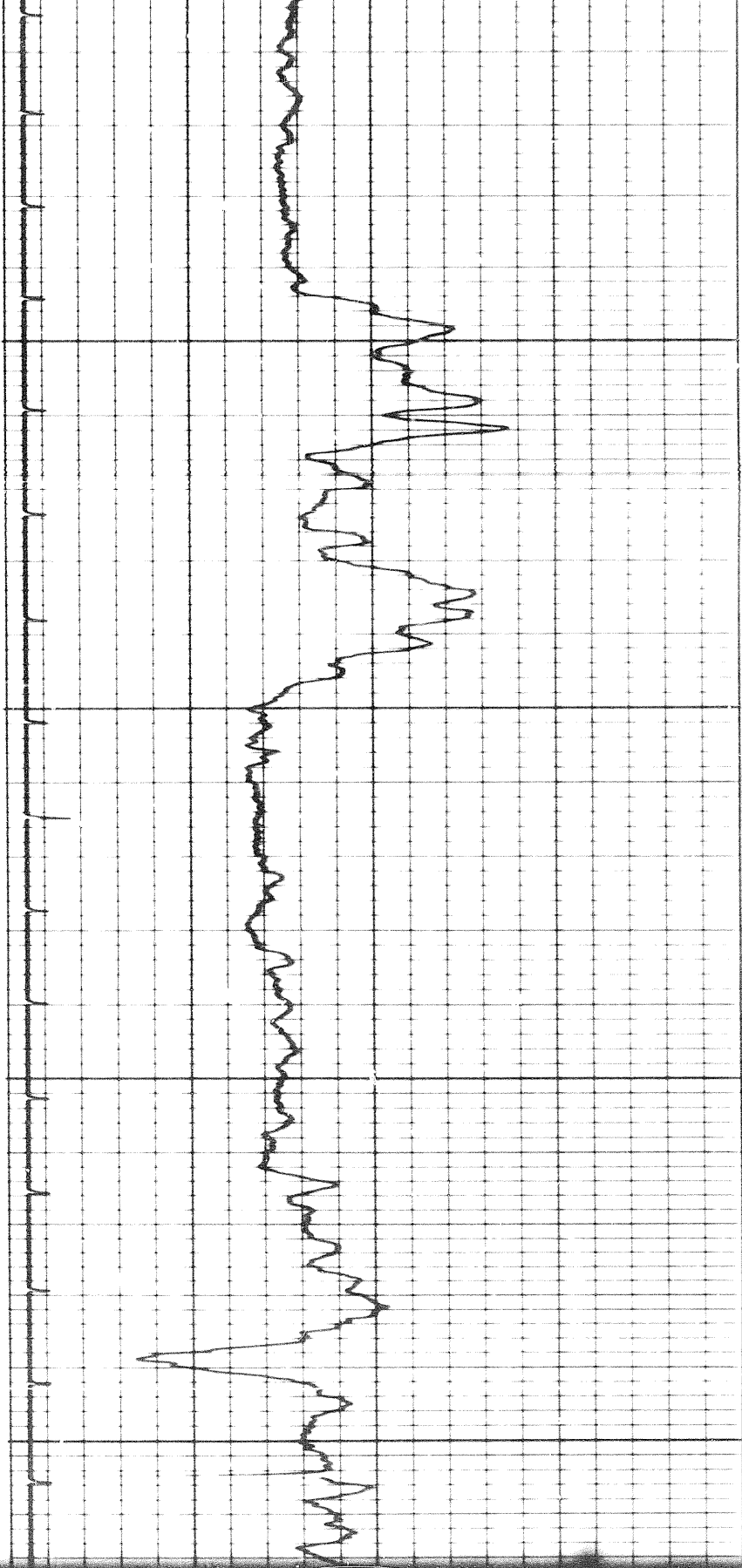


1800

1900

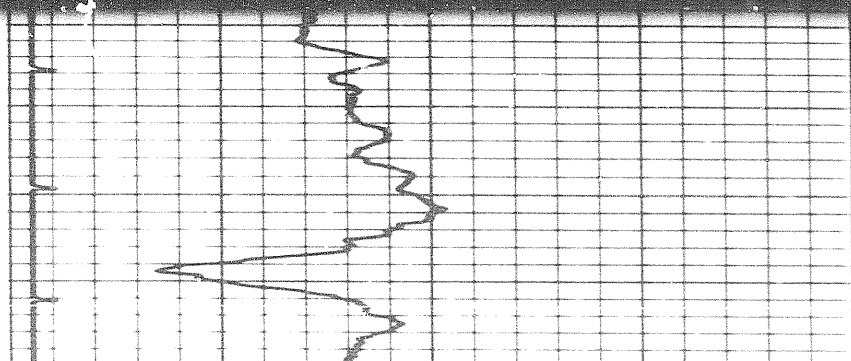
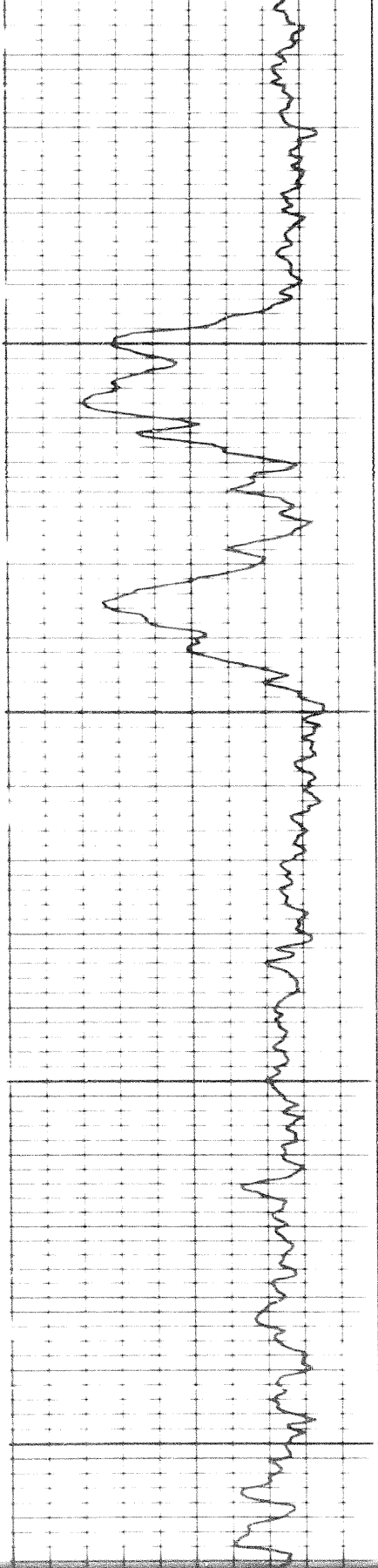
2000



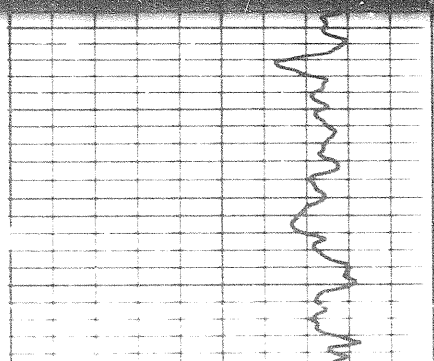


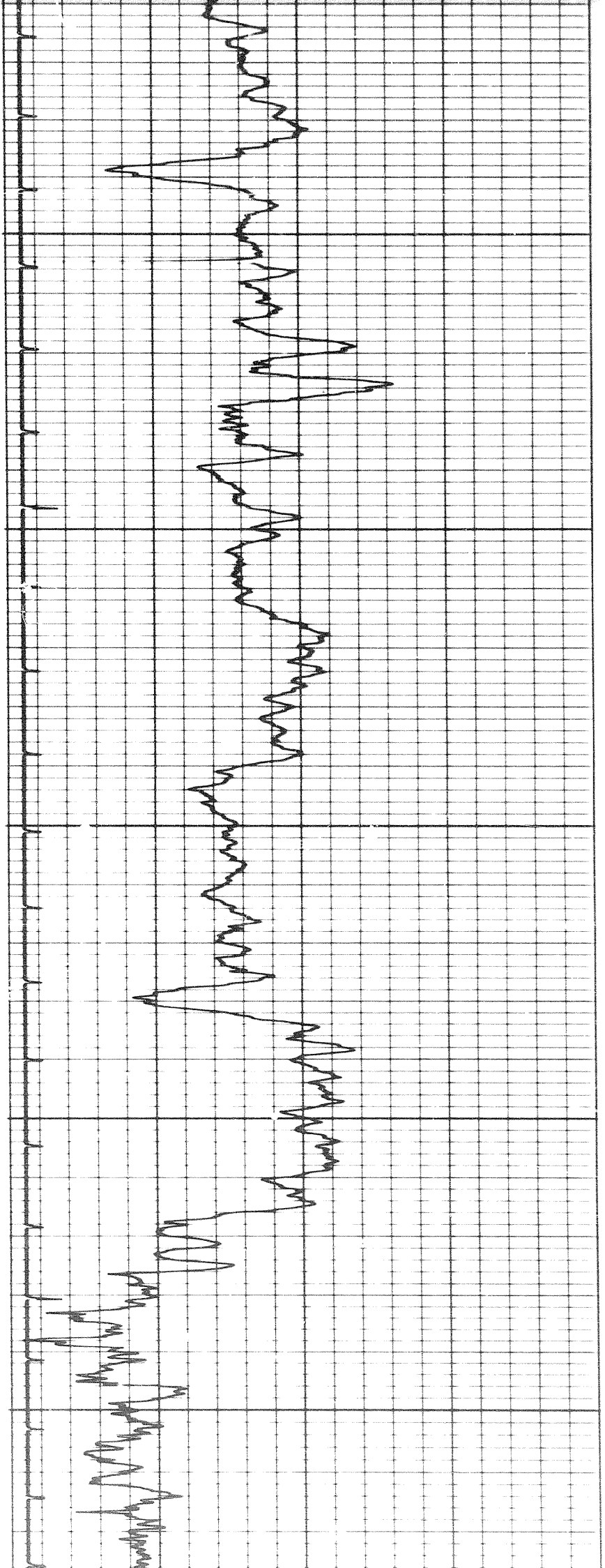
2100

2200



22



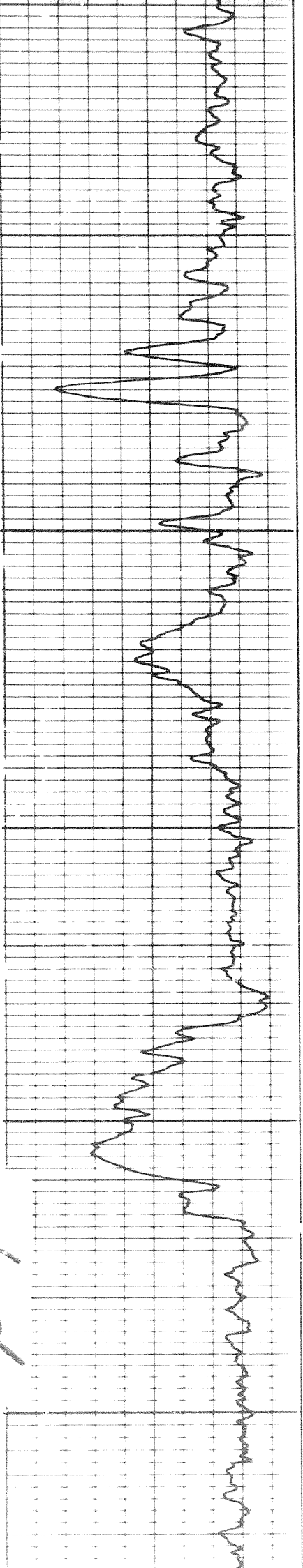


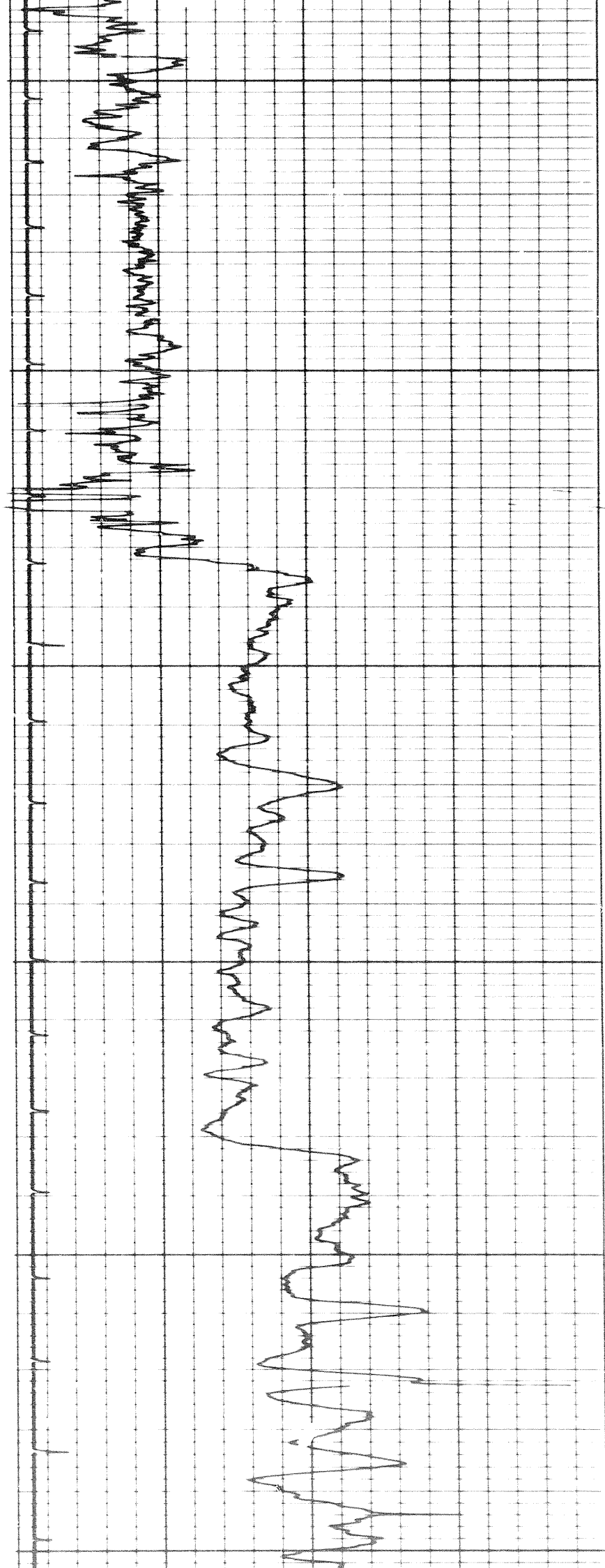
2200

2300

2400

6 of

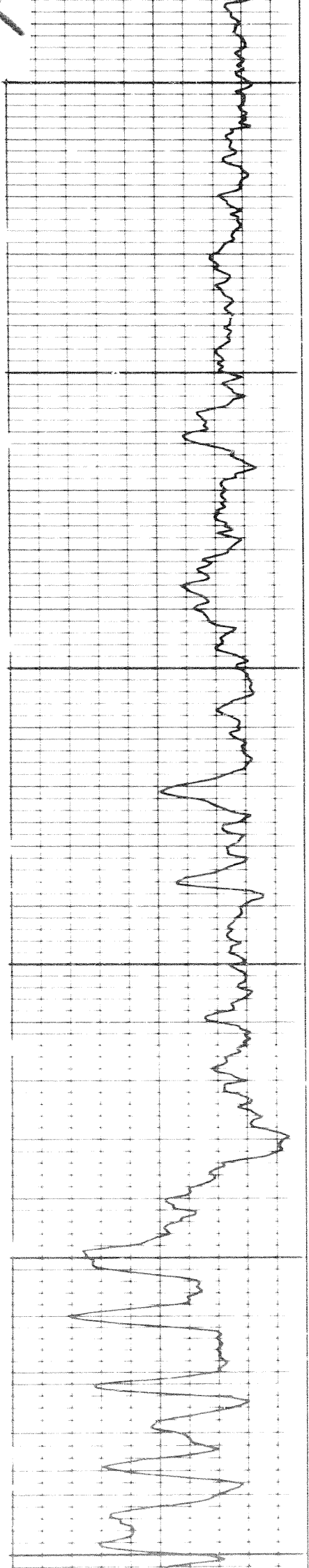


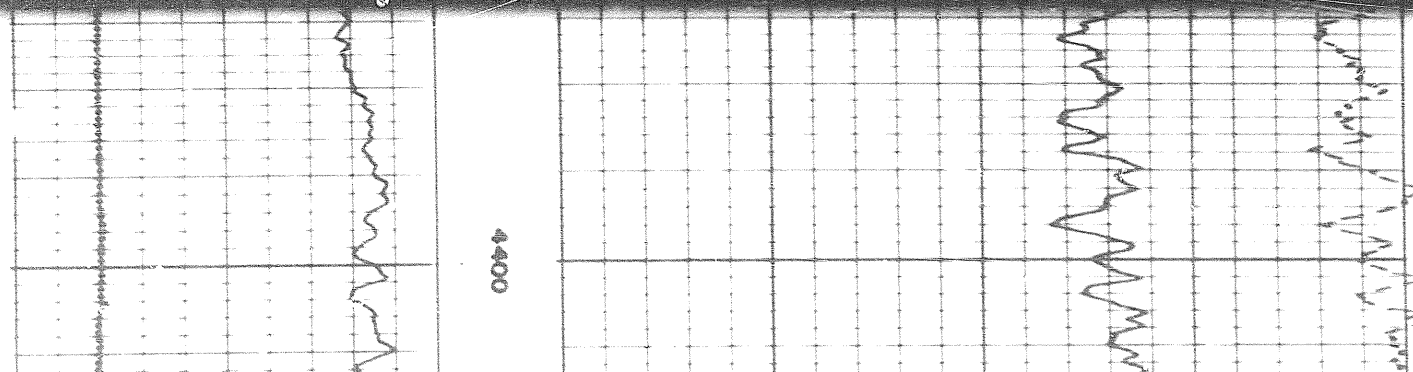
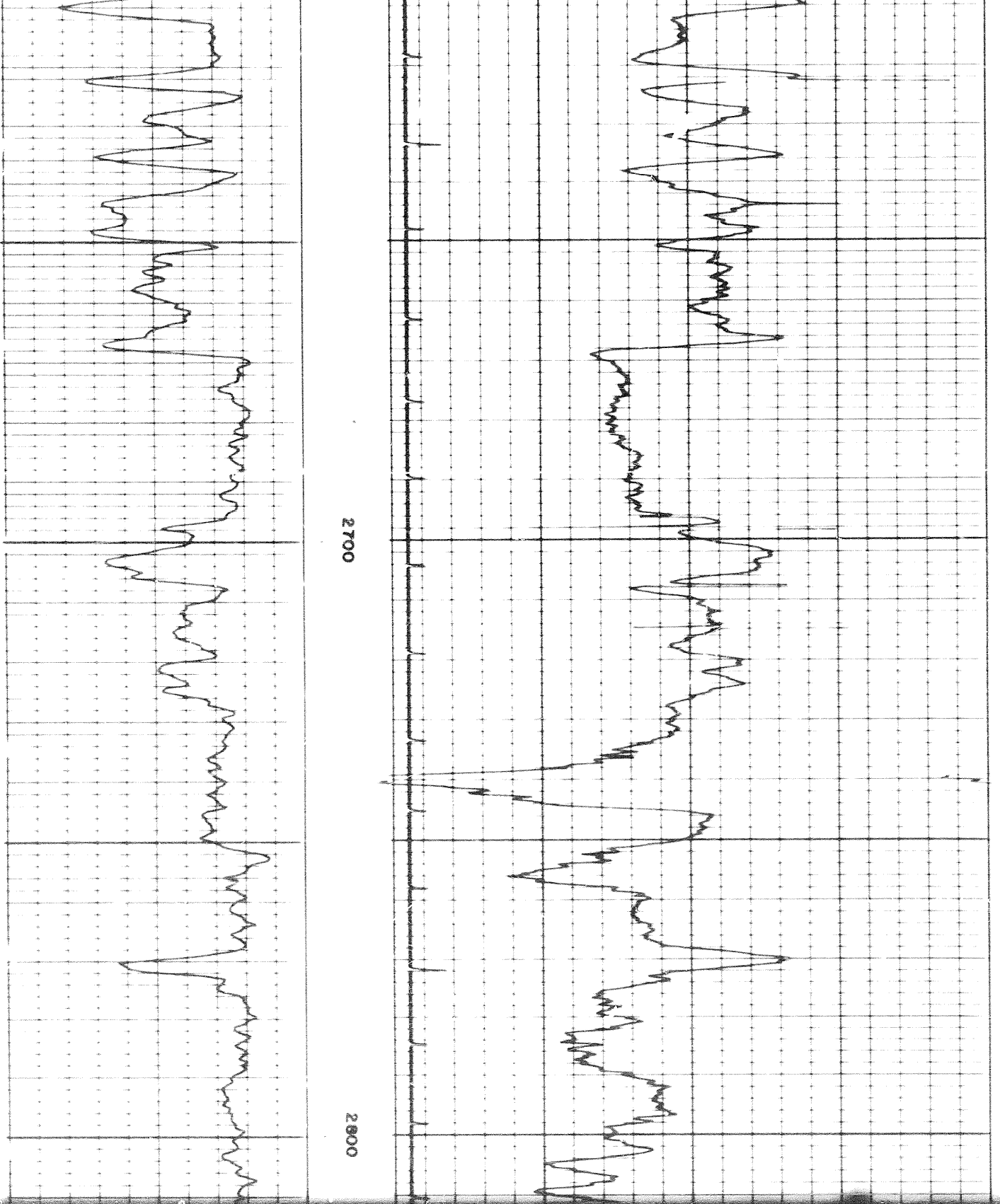


2400

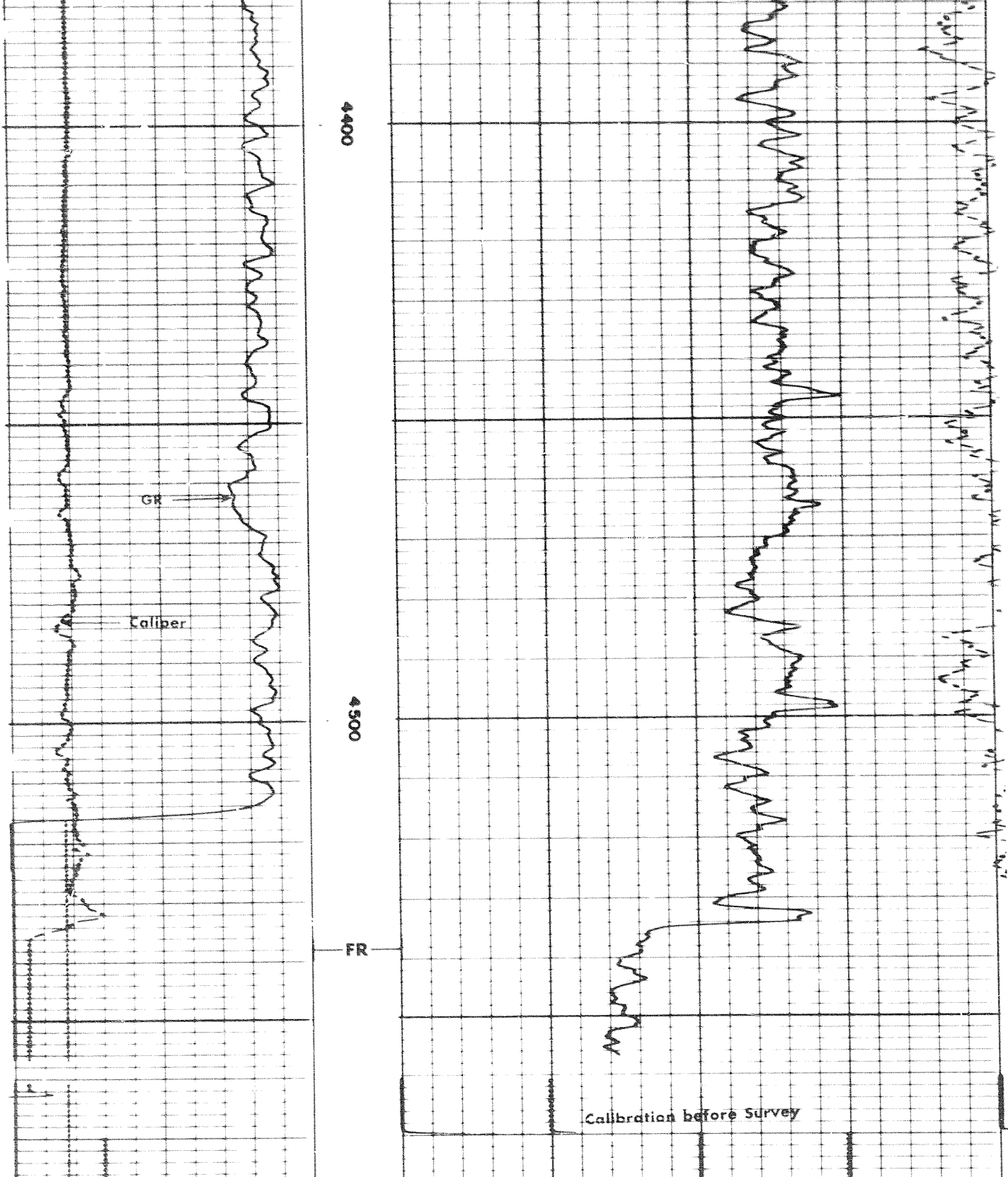
2500

2600





6 to 6
9 of 9



6 7 8 9 10 11 12 13 14

CALIPER
hole diameter in inches

Sens 300 TC
Zero 0 div to left
120
240

GAMMA RAY
API UNITS

DEPTHS

0.25 0 0.25

DENSITY CORRECTION
 $\Delta\rho - \text{gm/cc}$

2.0 2.5 3.0

BULK DENSITY
 $\rho_b - \text{gm/cc}$

Speed in FPM

Speed in FPM

Sens 300 T.C.
Zero 0 div to left
120
240

2.0

2.5

3.0

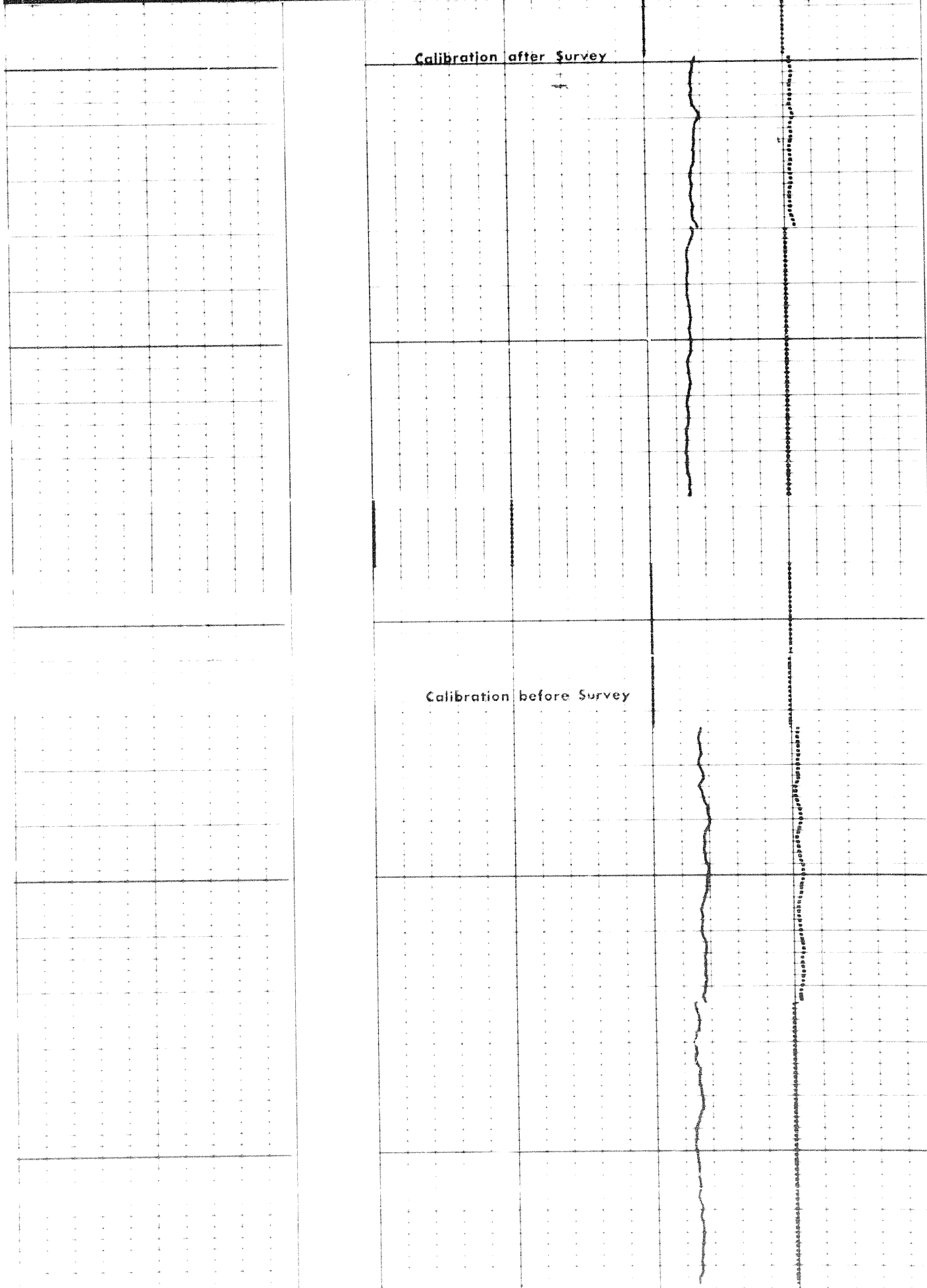
GAMMA RAY
API UNITS

DEPTHS

BULK DENSITY
 ρ_b - gm/cc

Calibration after Survey

Calibration before Survey



Calibration before Survey

COMPANY

SHELL CRACKER LIMITED

WELL

SHELL FIELD - RIVER 11-8-70

FIELD

WILCOAT

PROVINCE

YUKON TERRITORY

