

SCHLUMBERGER

FORMATION DENSITY LOG

COMPENSATED
SCHLUMBERGER OF CANADA Calgary, Alberta

PROVINCE YUKON TERRITORY
 FIELD WILDCAT
 WELL SHELL PEEL RIVER
 YT-K-76
 COMPANY SHELL CANADA LIMITED

Date	19 NOV 65
Run No.	ONE
First Reading	4538
Last Reading	485
Feet Measured	4053
Depth Reached	4539
Bottom Driller	4550
Cg. SOC	485
Cg. Driller	483
Mud Nature	GEL
Dens. Visc.	9.9 400+
Mud pH	9.5
Water Loss	4.8
Res.	1.74 @ 60 %
Rmf	0.90 @ 116 %
@ BHT	1.50 @ 59 %
Rmc	1.93 @ 53 %
ppm - Cl	
Bit Size	6 3/4"
Source to Detector	
Spacing	
Equipment Type	PGT-D
Op. Rig Time	4 HRS
Truck No.	SKW M 1576
Recorded By	PRATHER
Witness	NEDHAM

COMPANY	SHELL CANADA LIMITED
WELL	SHELL PEEL RIVER YT-K-76
FIELD	WILDCAT
PROVINCE	YUKON TERRITORY
LOCATION	66° 25' 35.4" N 134° 14' 07.9" W
Permanent Datum	GL 238.0
Log Measured From	KB 12.8 Ft. Above Perm. Datum
ELEV. KB	250.8
GL	238.0
CBF	
Other Services:	SRS, IES, ML, BS-GR

6DEC65 CAL AT

REMARKS
 Drilling Stopped 1800 / 17th : Circulation Stopped 1800 / 19th : Tool on Bottom 2230 / 19th : 1st Run Service Order # 29590
 B.H.T. °F

Panel No.	31
Cartridge No.	B 47
Sonde No.	D 48
Detector No.	D 51

CALIBRATION:	Background CPS	Test Source CPS	Galvanometer Deflection Div.	Panel Sens. Tap for Cal.
Gamma Ray	60	Li-10	8.25	500

<p>GAMMA RAY API UNITS</p> <p>Sens. 300 T.C. 2 Zero 0 div. to left 120 240</p> <p>Speed in FPM →</p>	<p>DEPTHS</p>	<p>BULK DENSITY ρ_b - gm/cc</p> <p>2.0 2.5 3.0</p>	<p>DENSITY CORRECTION $\Delta\rho$ - gm/cc</p> <p>0.25 0 0.25 (-) (-) (-)</p>
<p>CALIPER hole diameter in inches</p> <p>6 7 8 9 10 11 12 13 14</p>			

CALIPER
hole diameter in inches

6 7 8 9 10 11 12 13 14

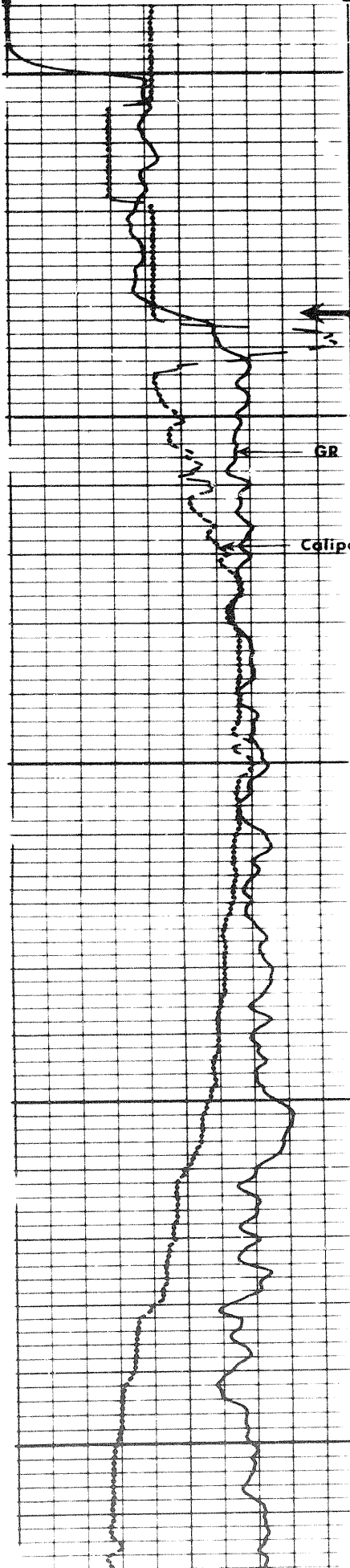
DENSITY CORRECTION

$\Delta\rho$ - gm/cc

0.25
(-)

0

0.25
(-)



Casing

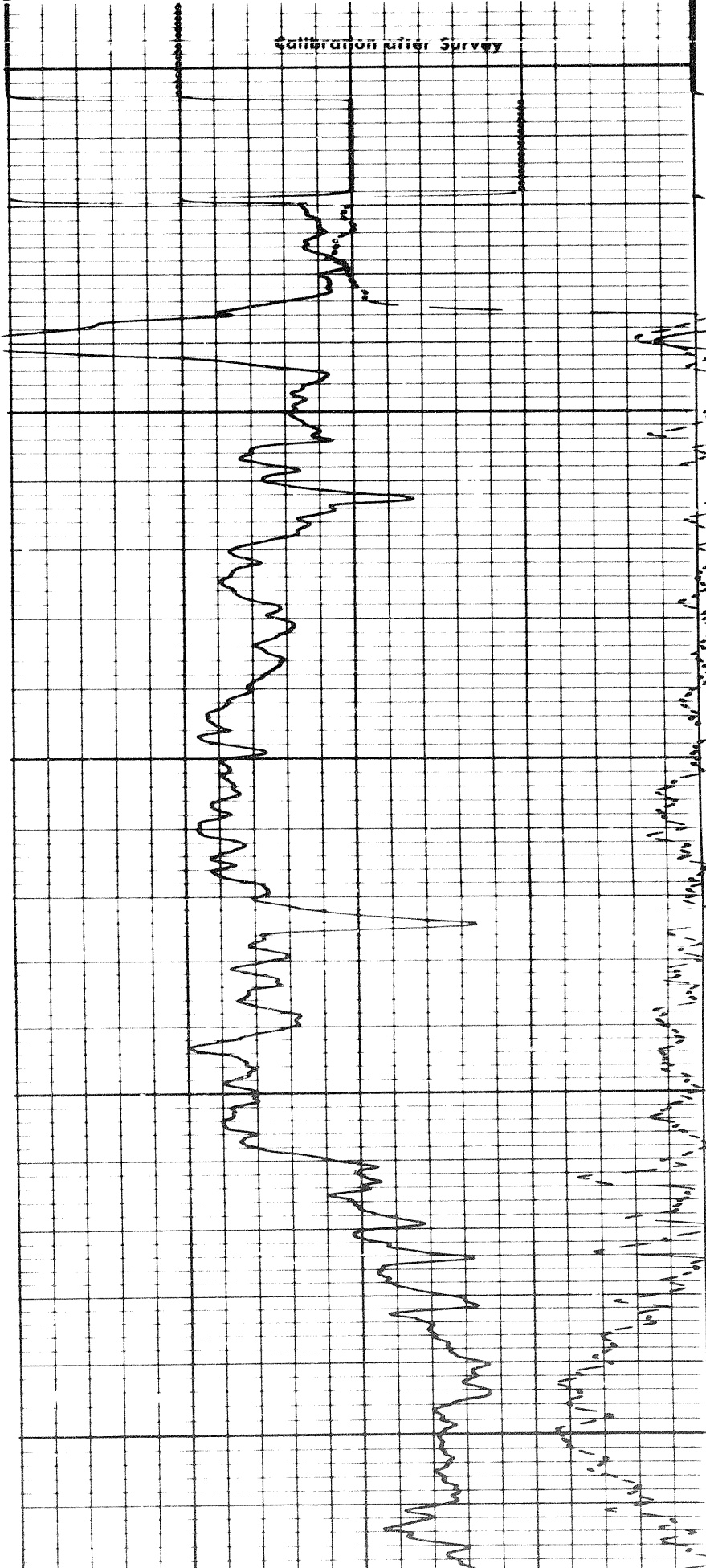
0050

GR

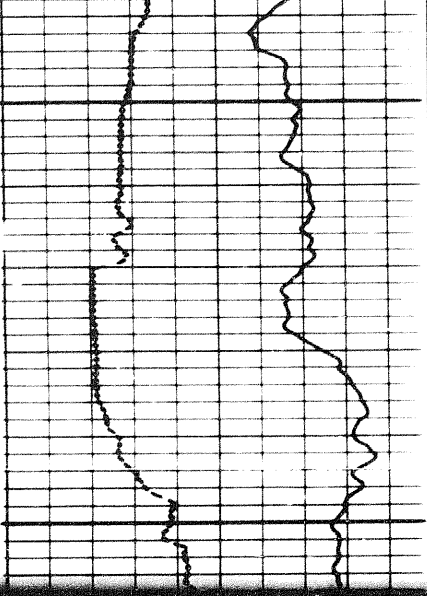
Caliper

0090

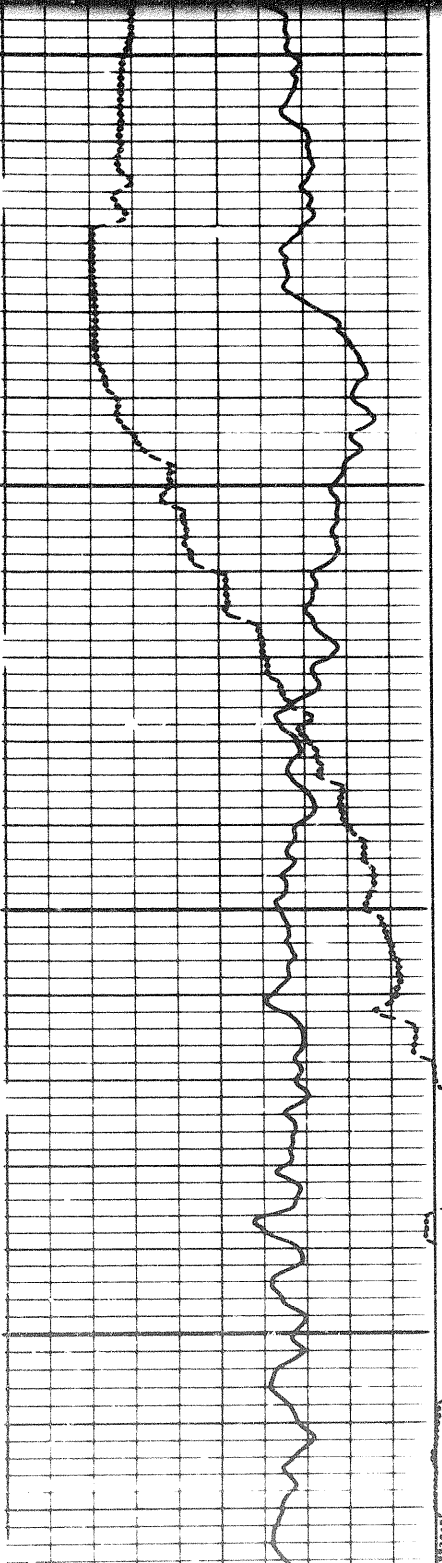
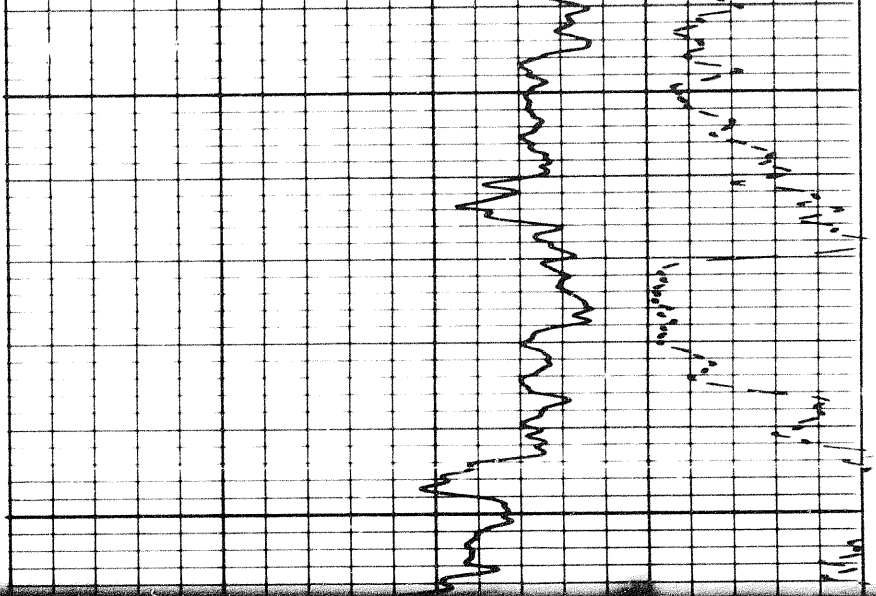
Calibration after Survey



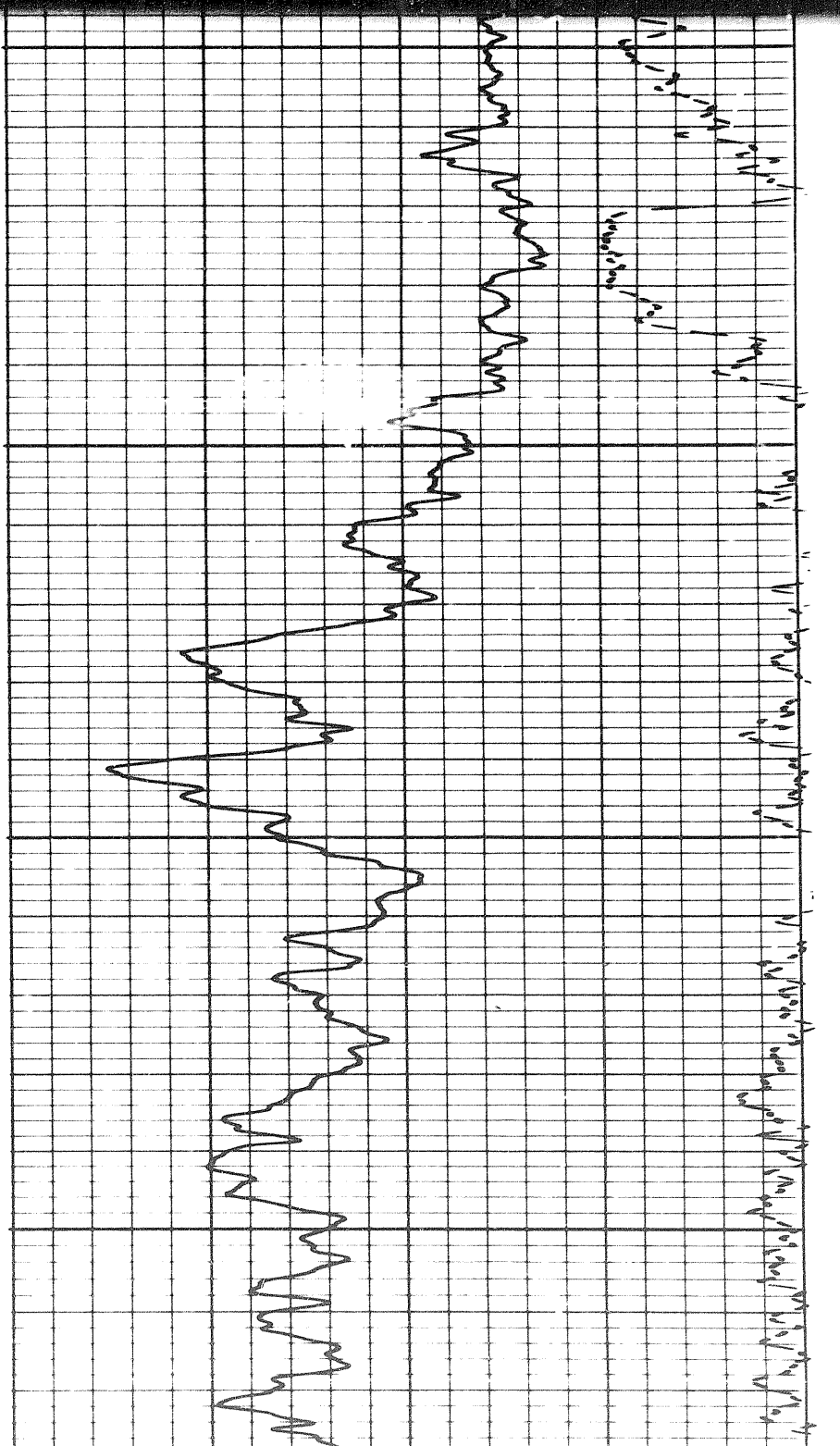
1



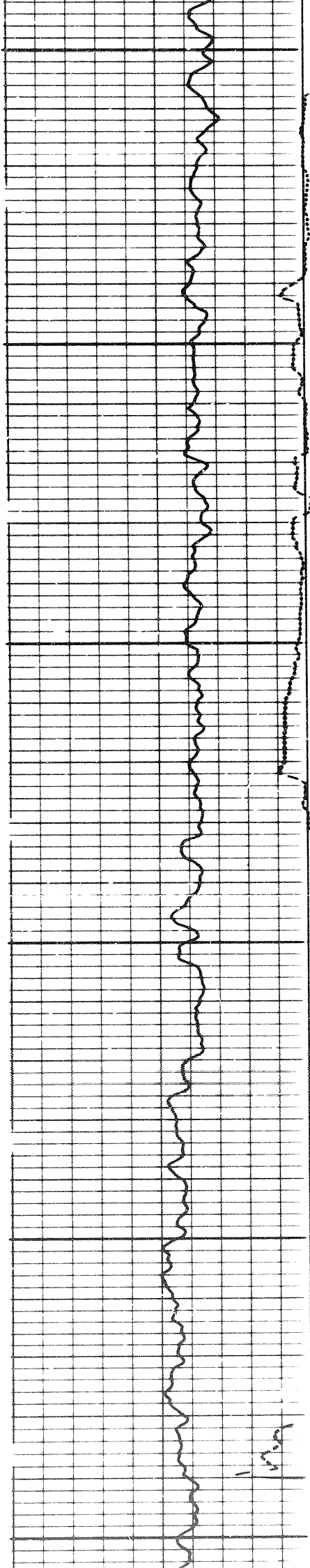
0700



0700



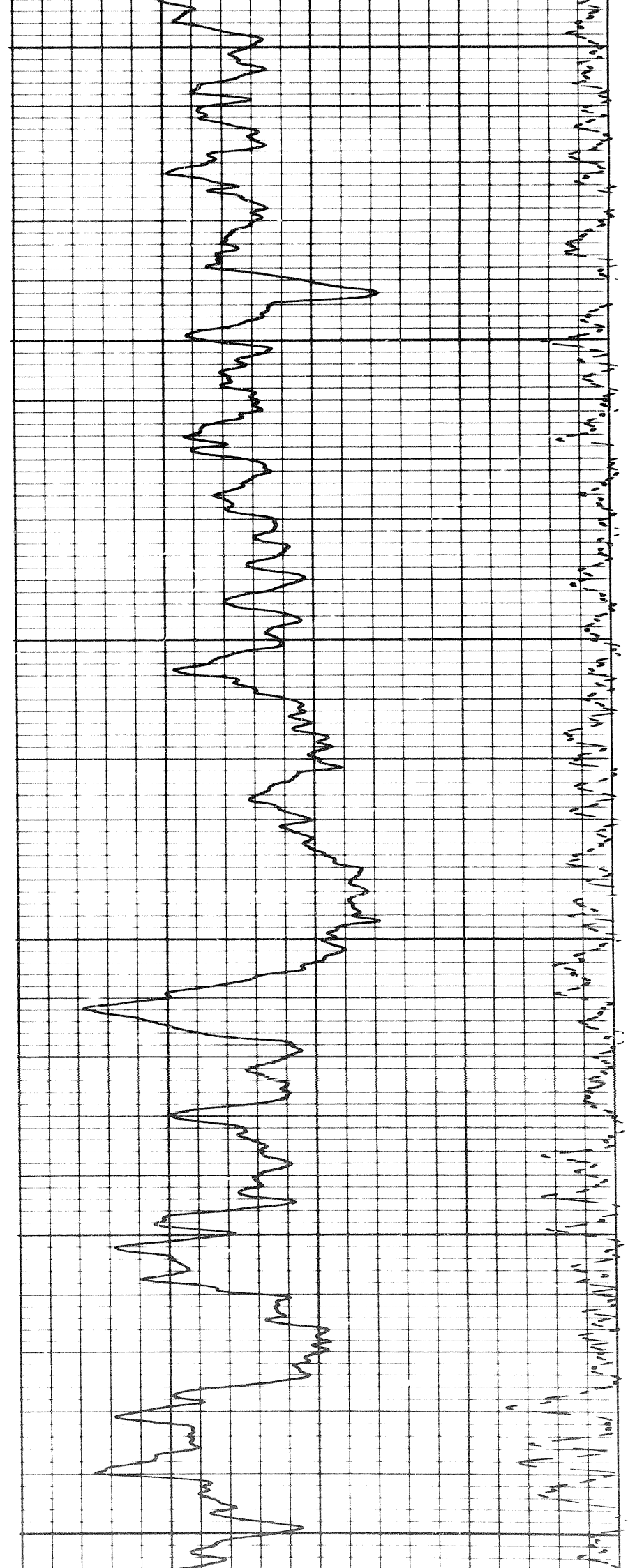
0030

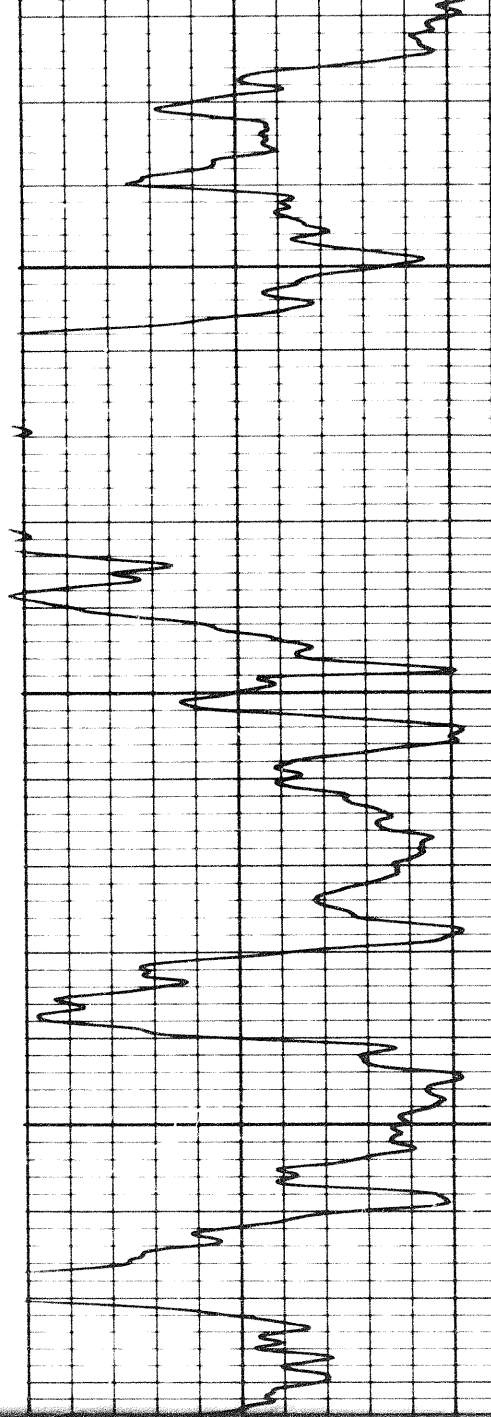
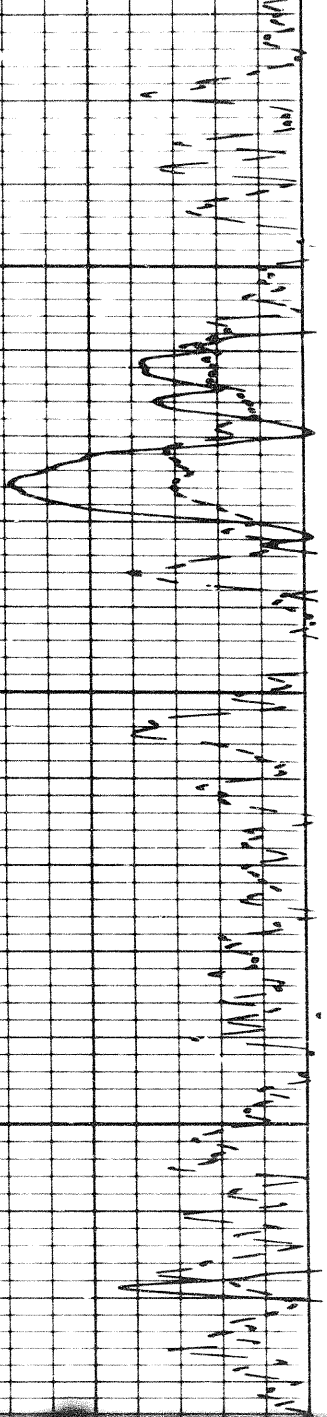


0080

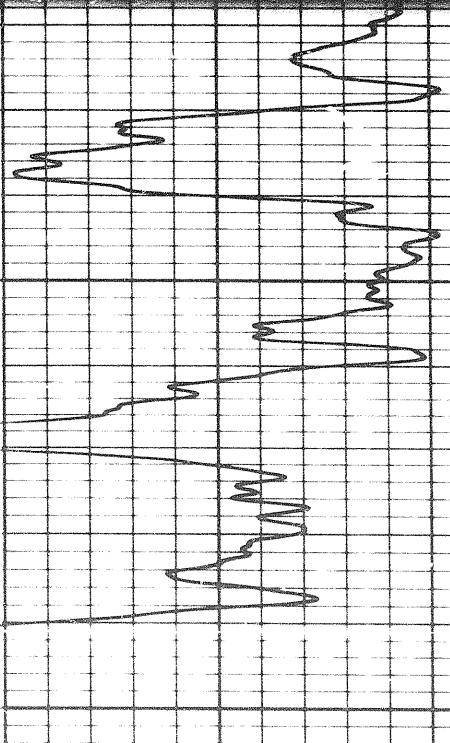
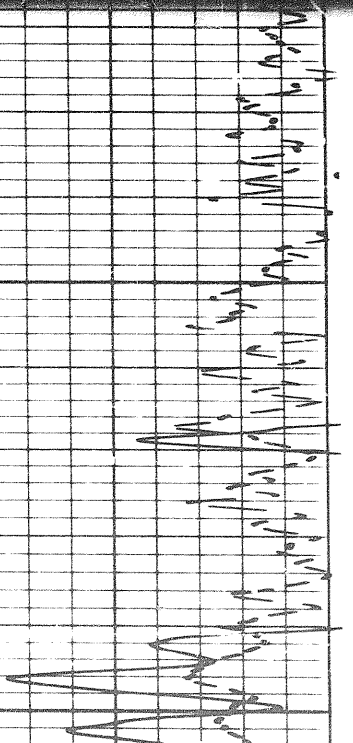
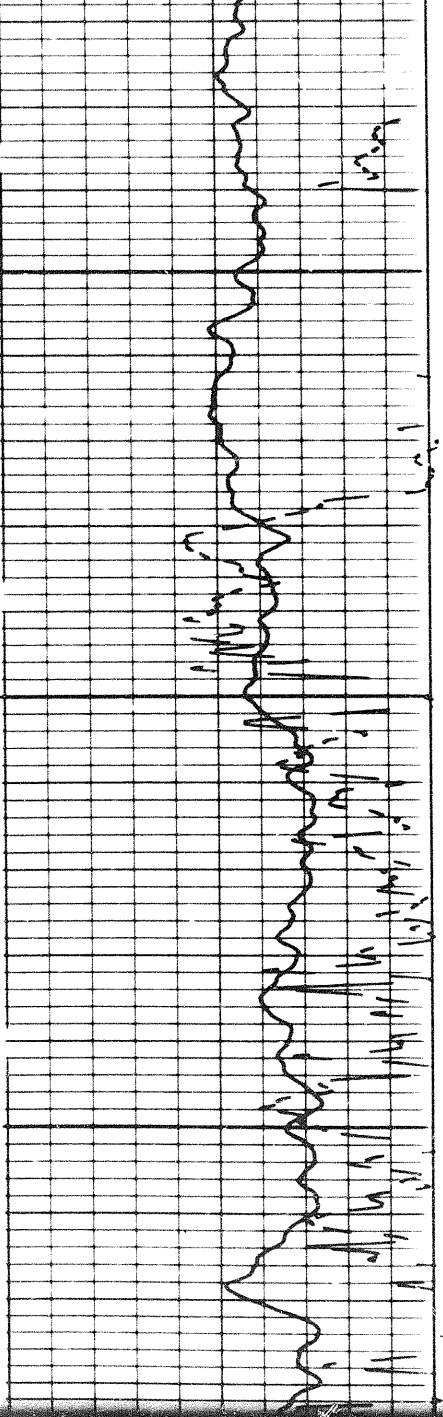
0060

0000

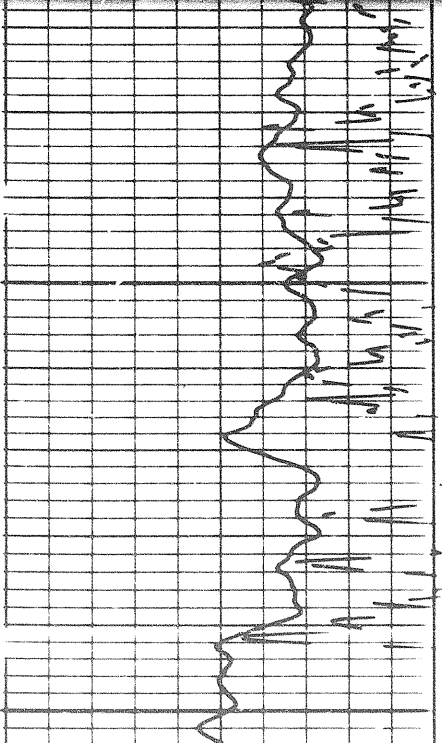


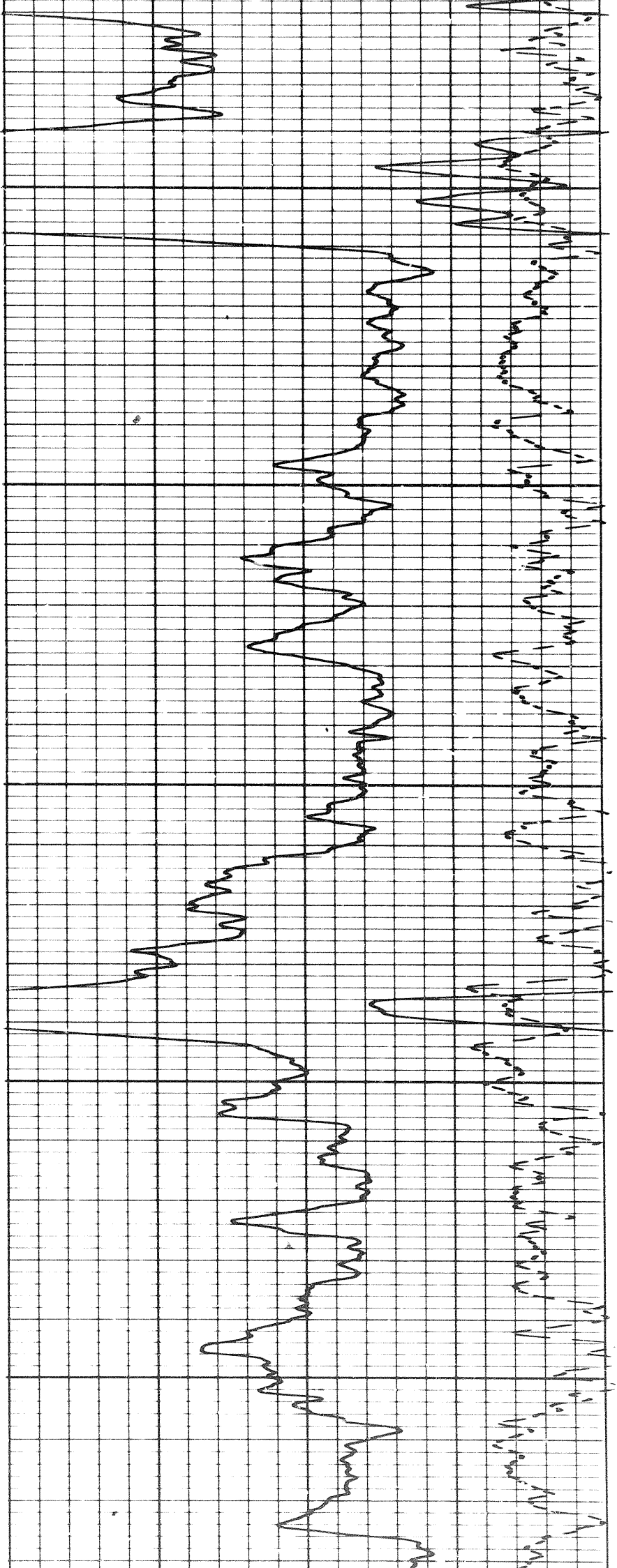


1200



1200

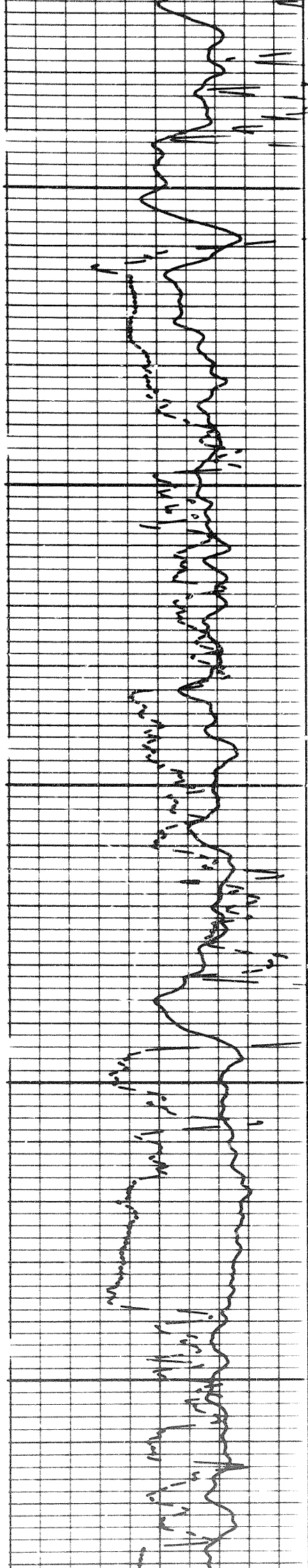


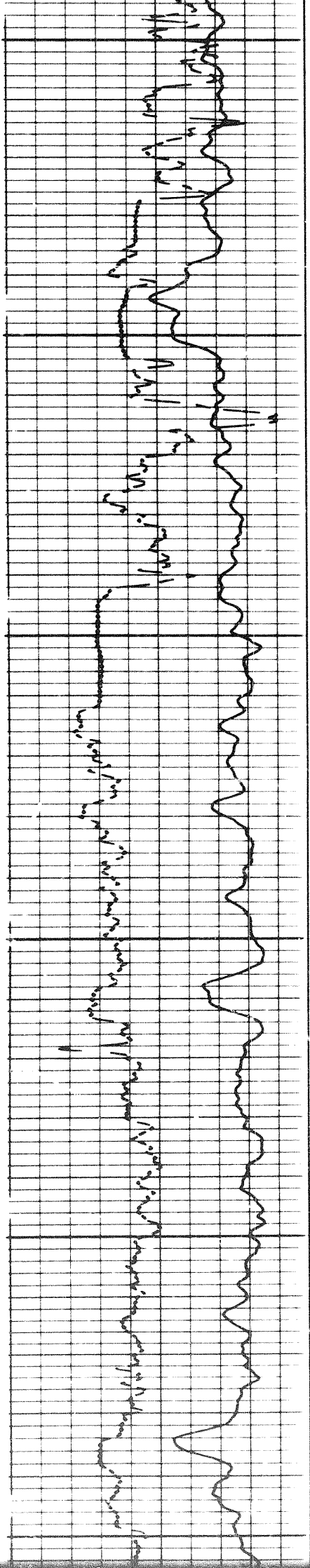


1200

1300

1400

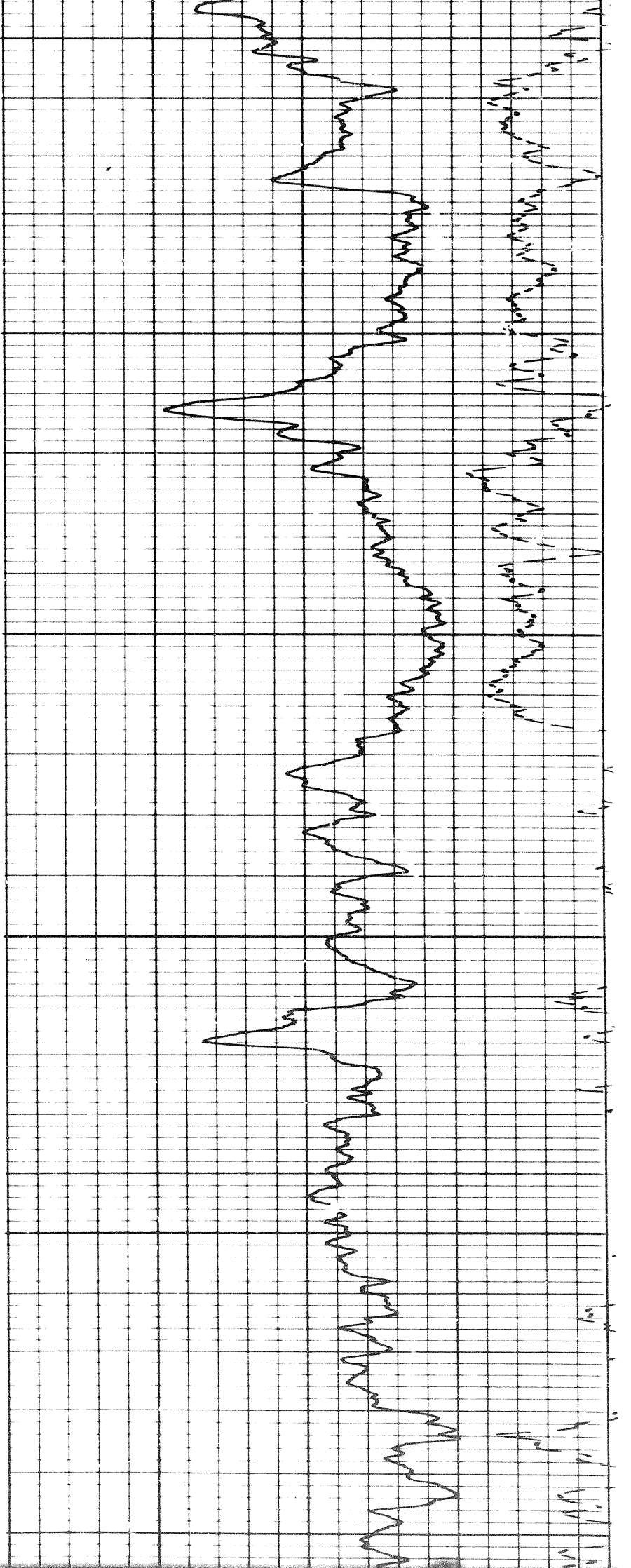


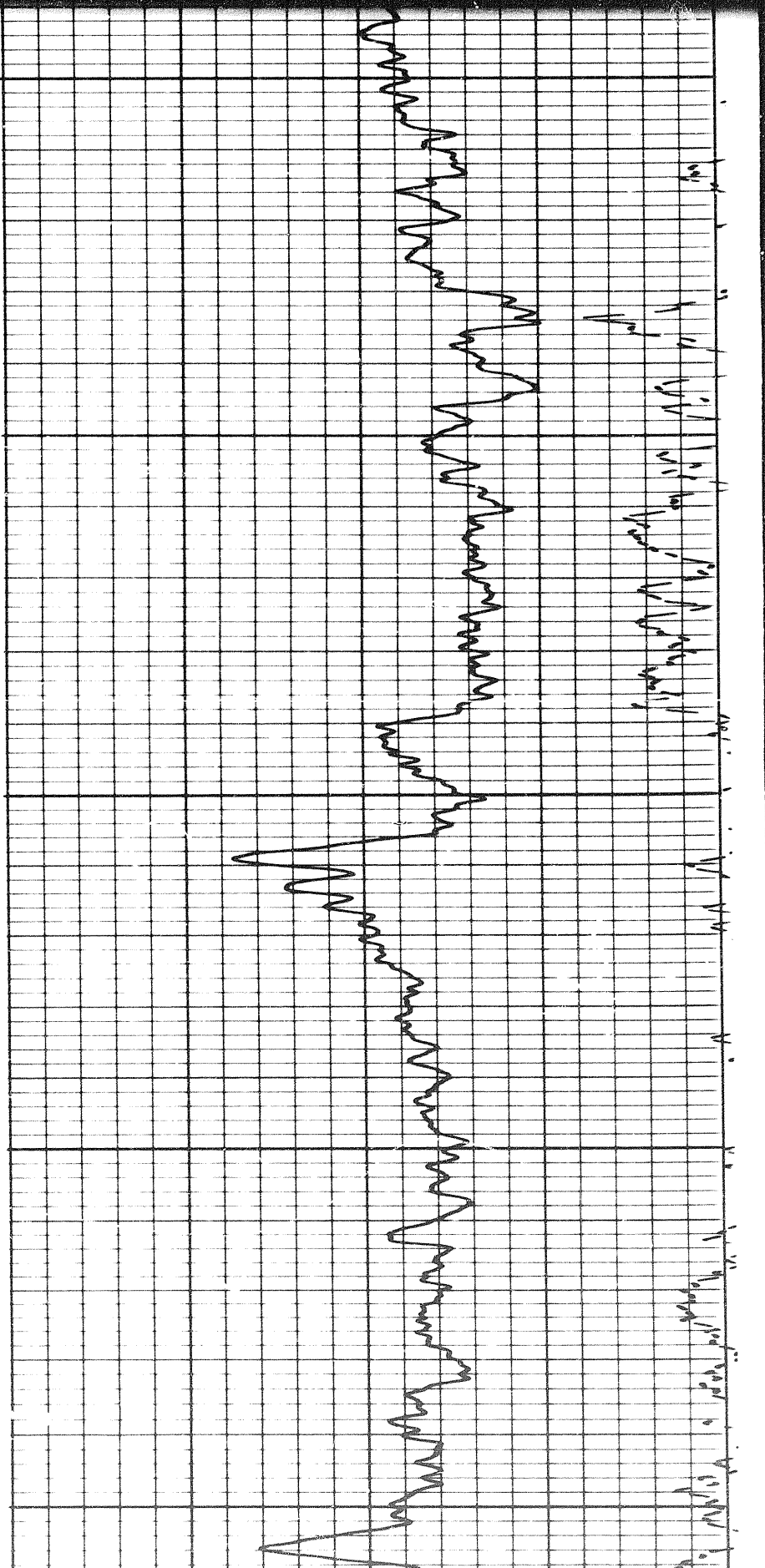
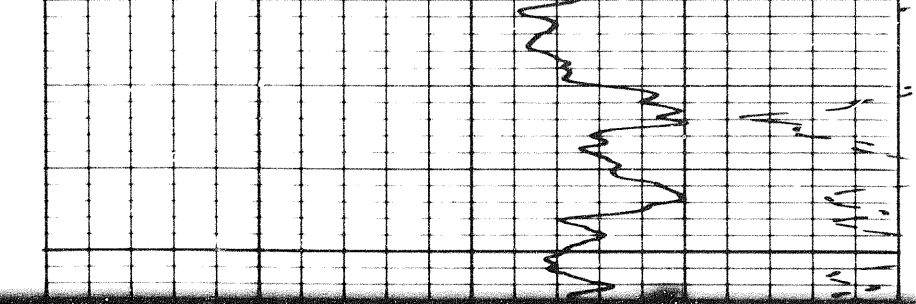


1400

1500

1600

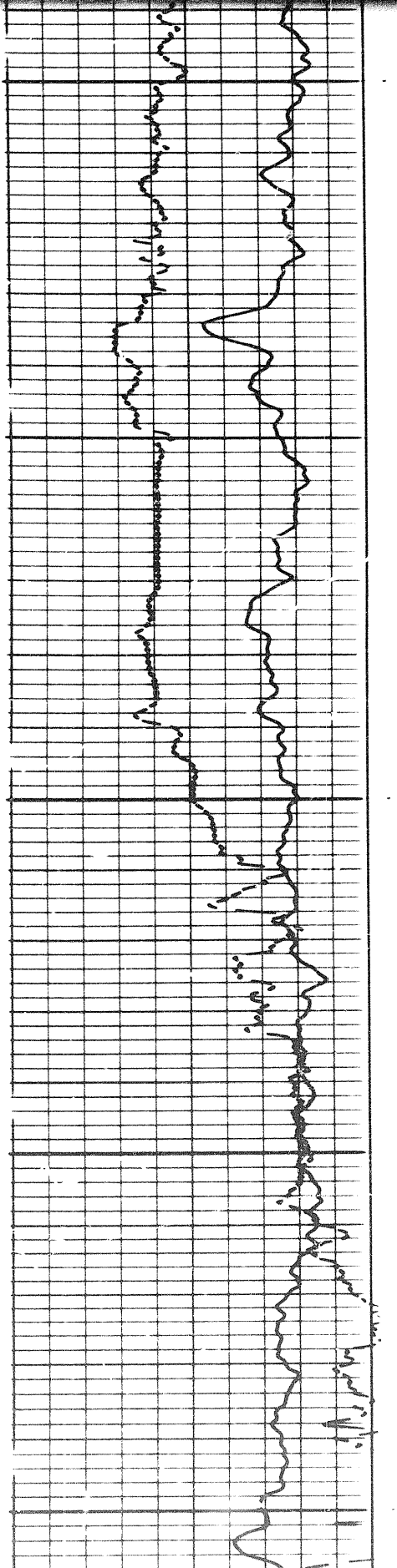
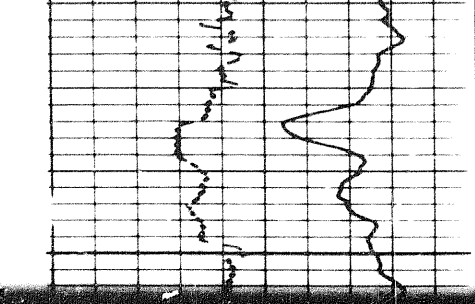


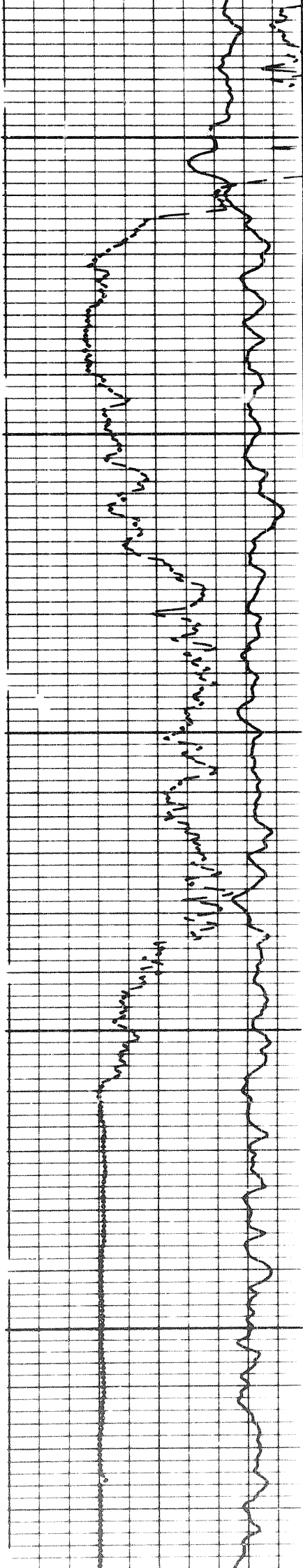


1600

1700

1800

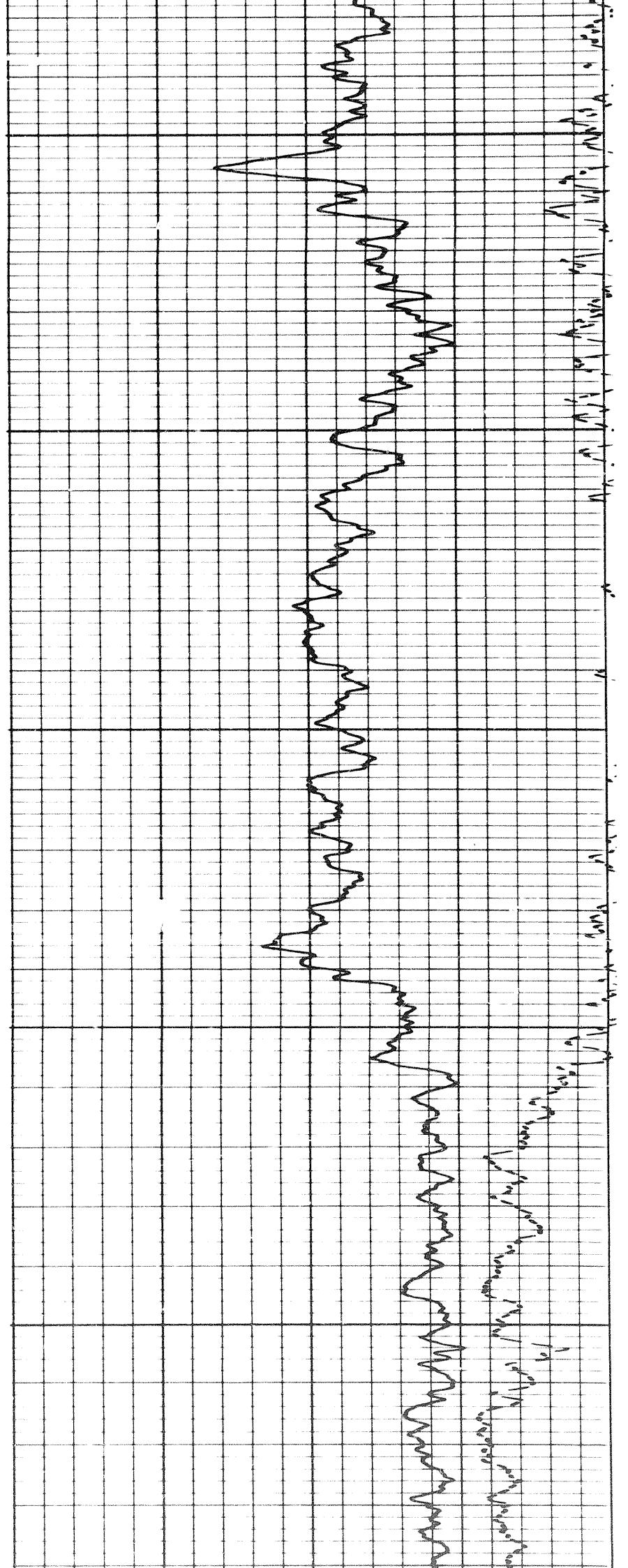


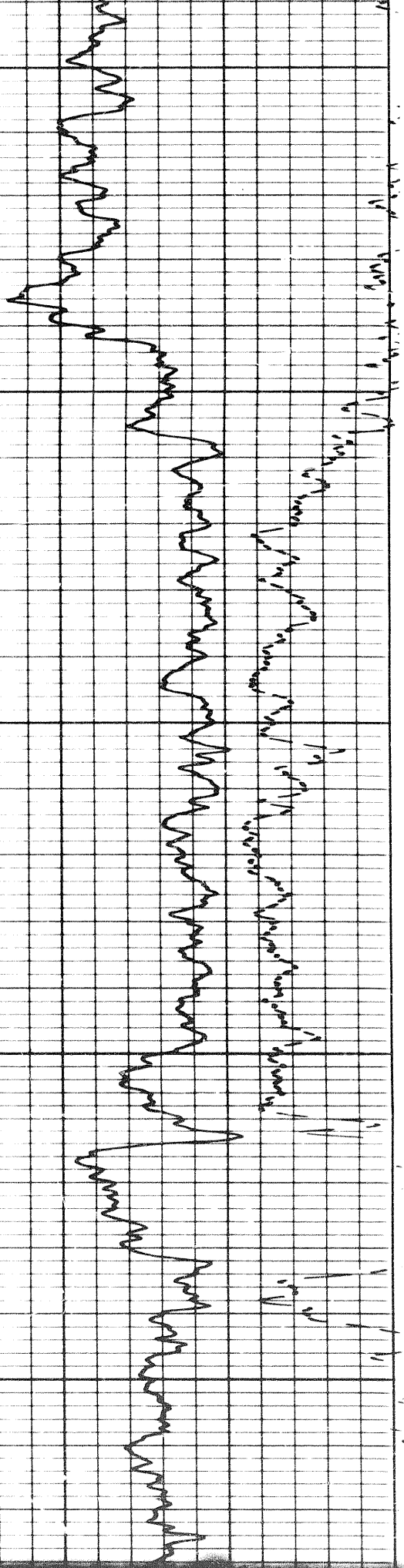


1800

1900

2000

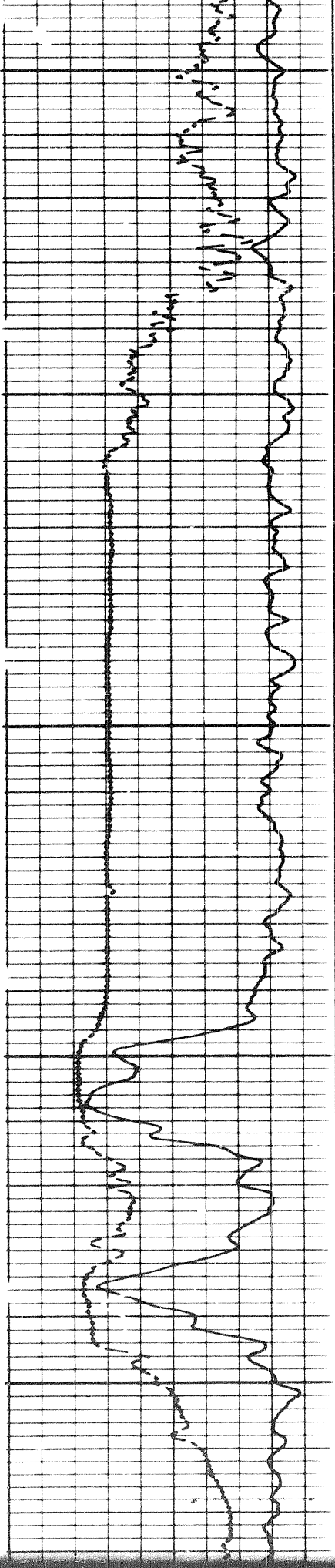




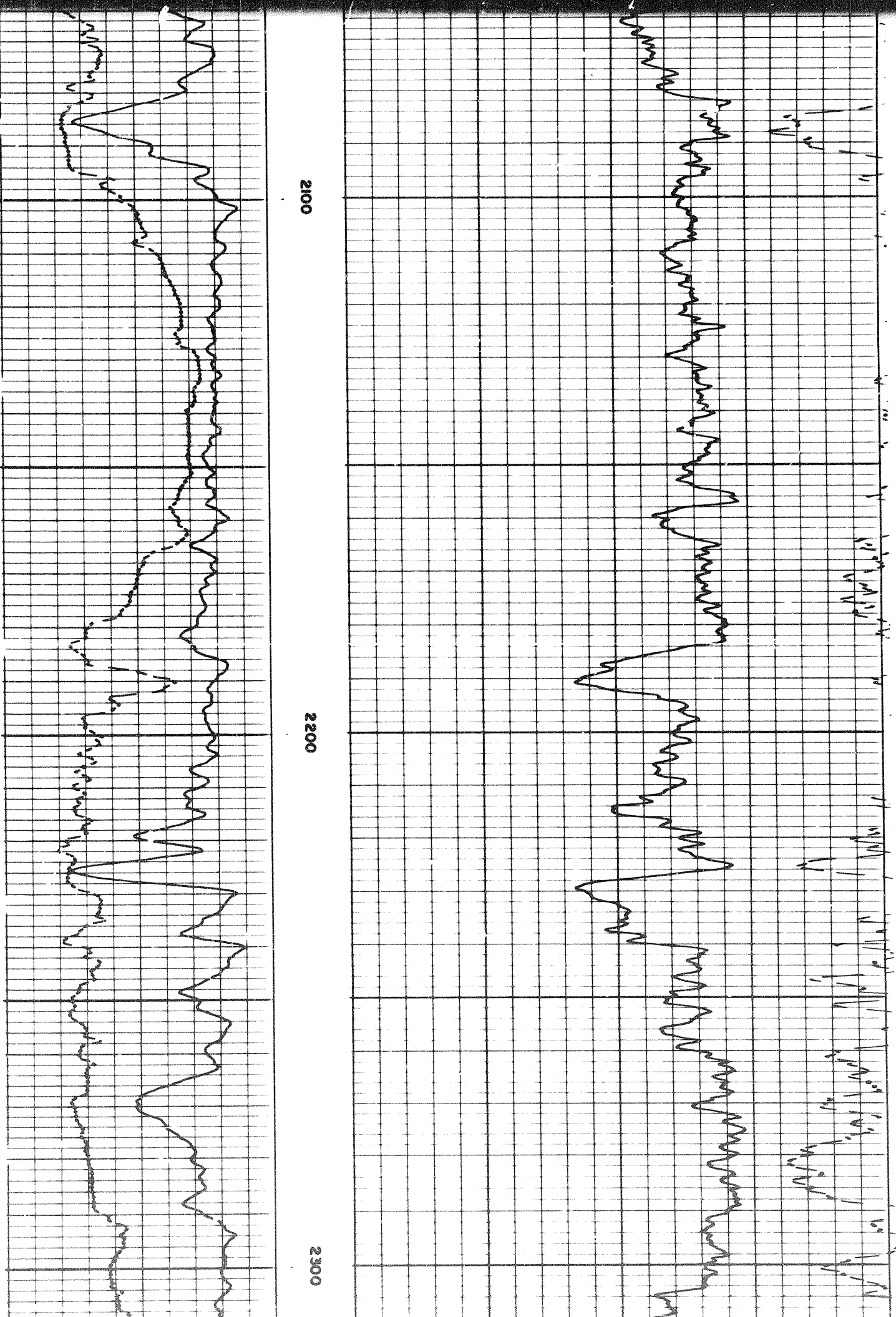
1900

2000

2100



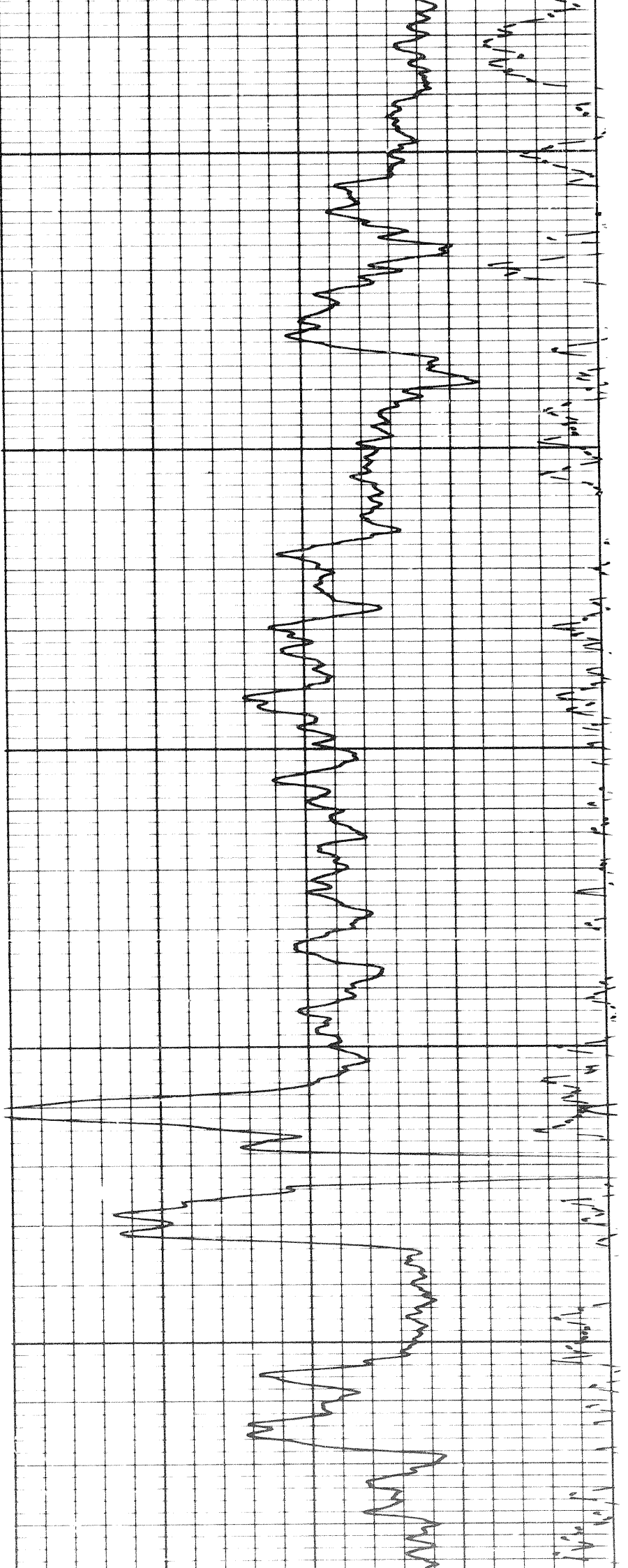
1



2100

2200

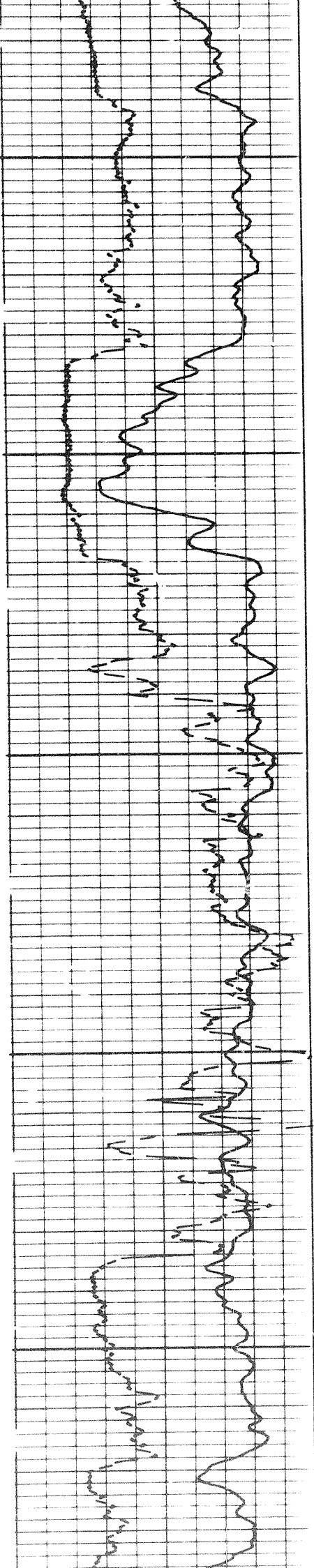
2300



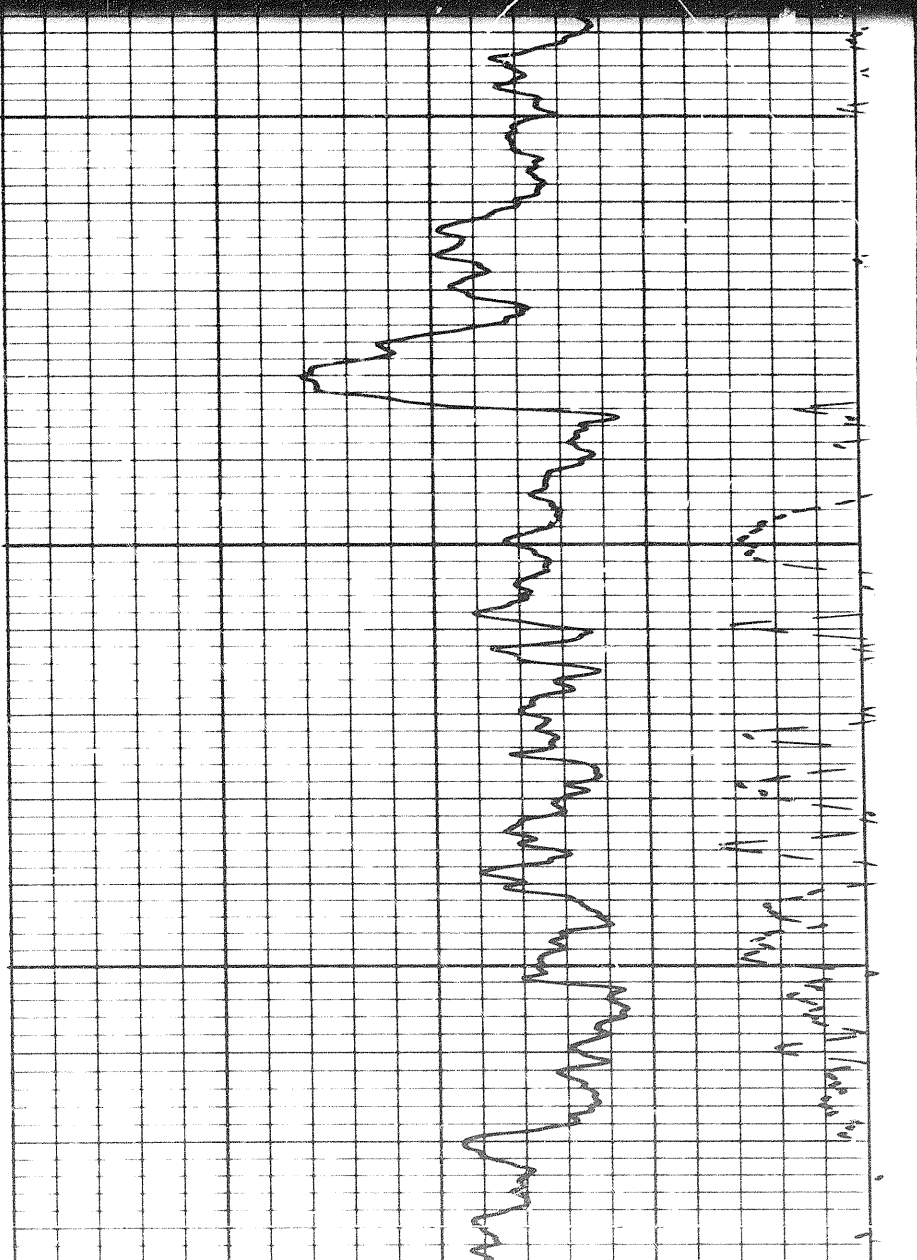
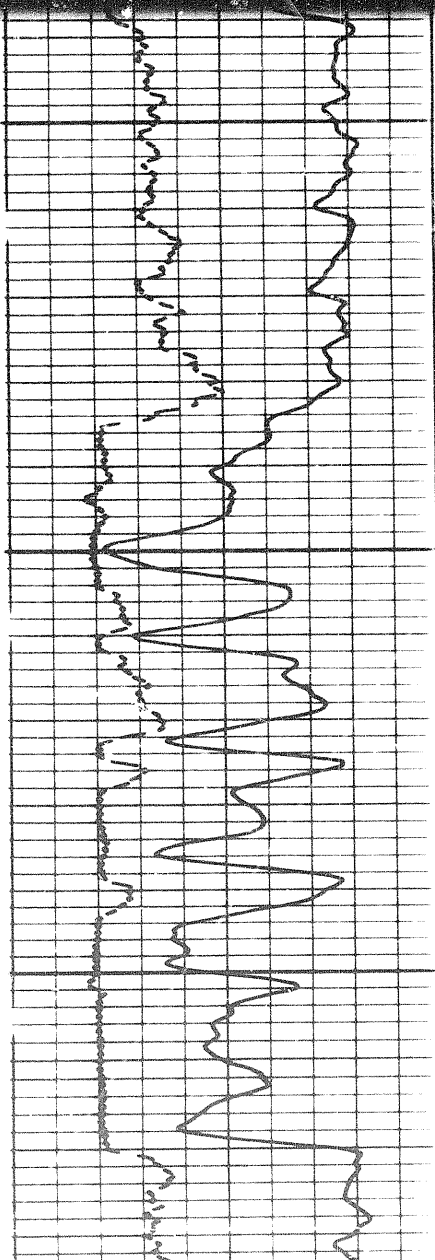
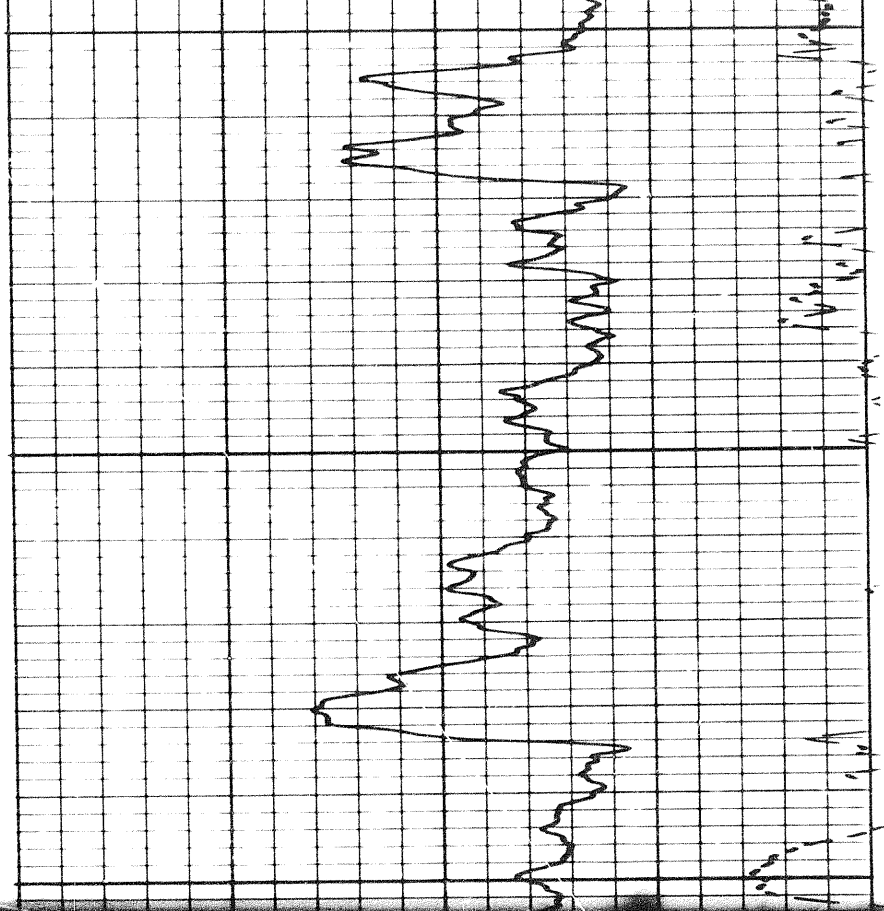
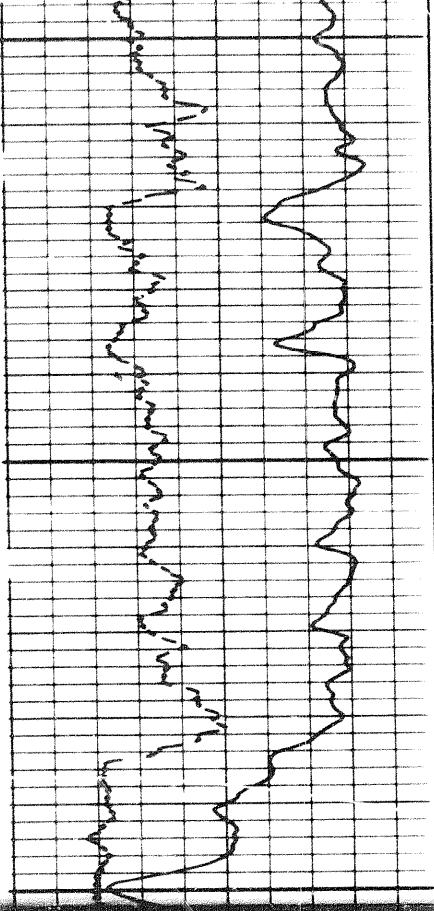
2300

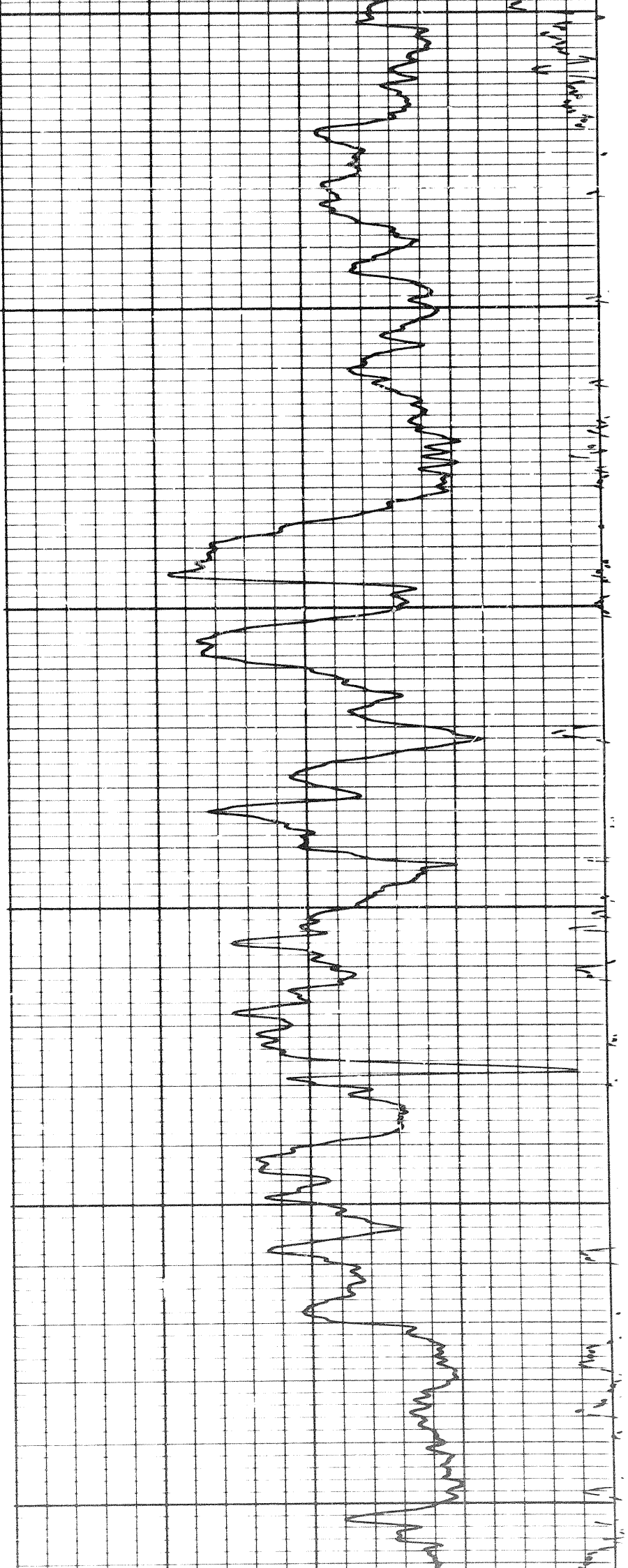
2400

2500



5 of

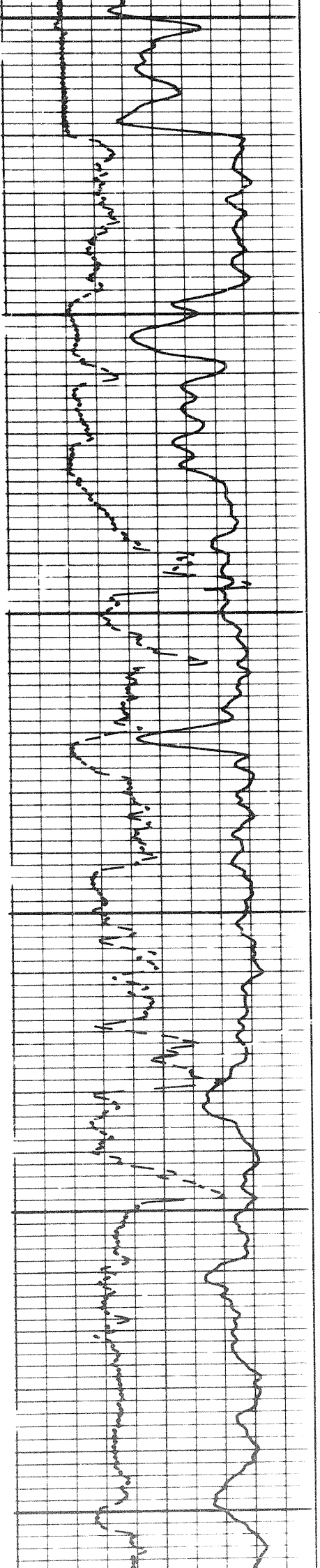


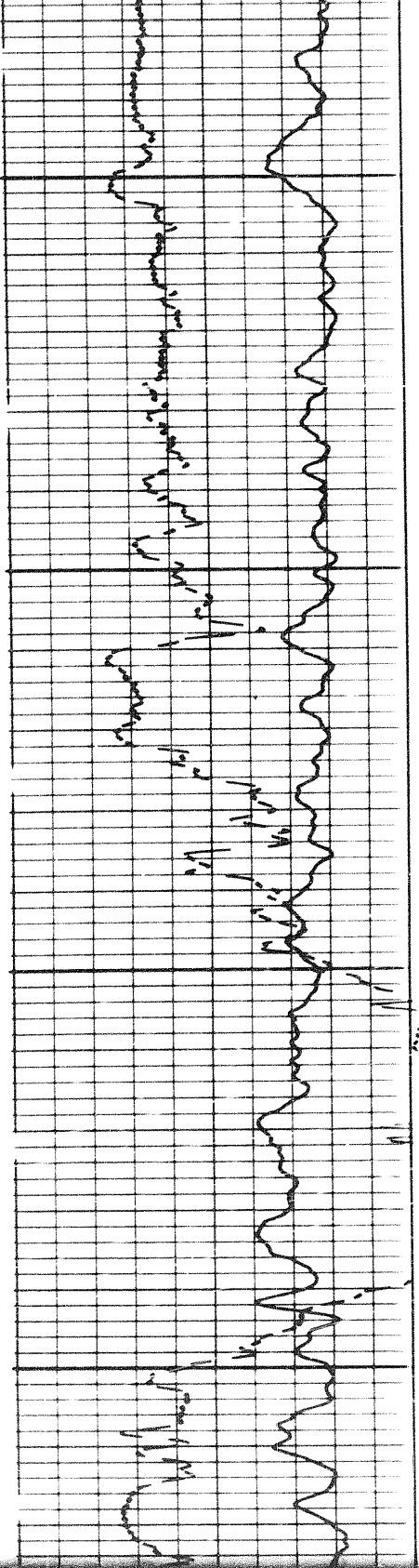
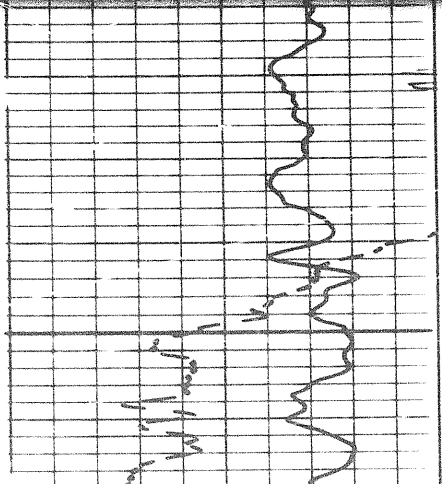


2700

2800

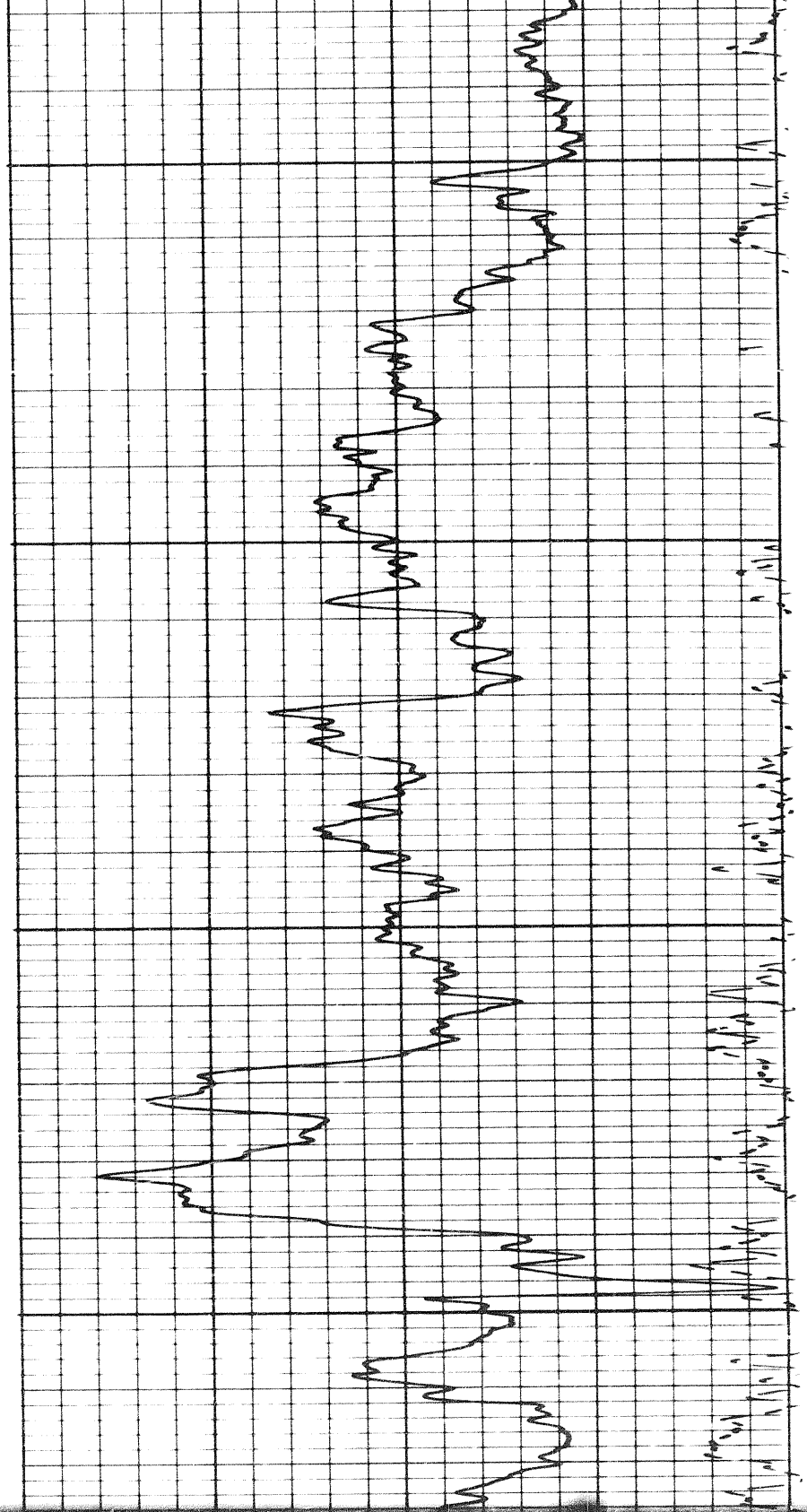
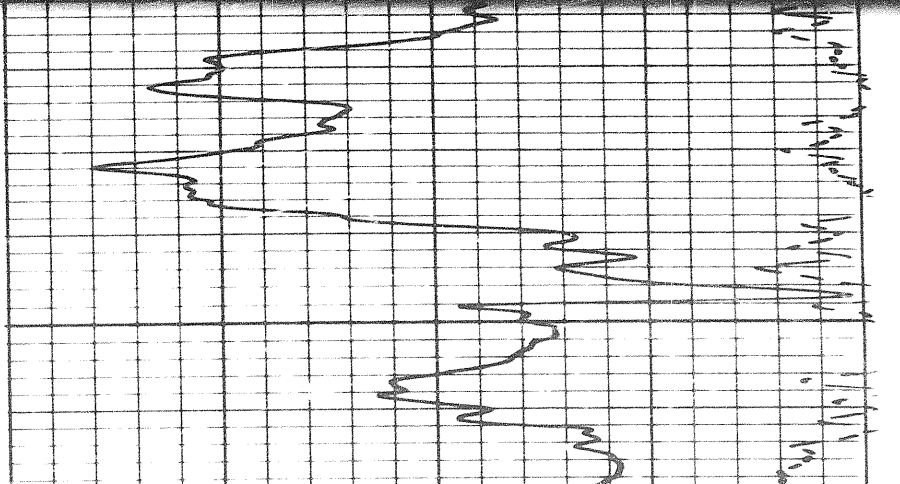
2900

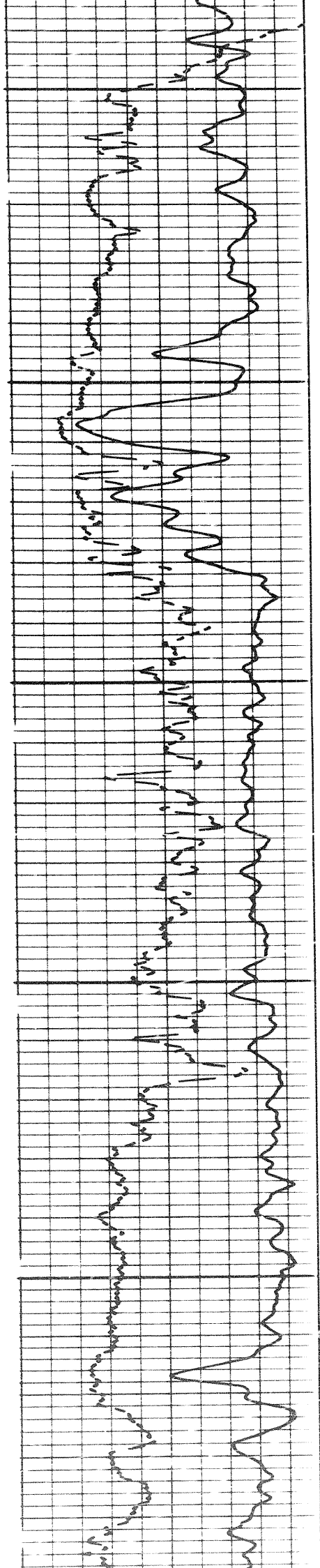




2900

3000

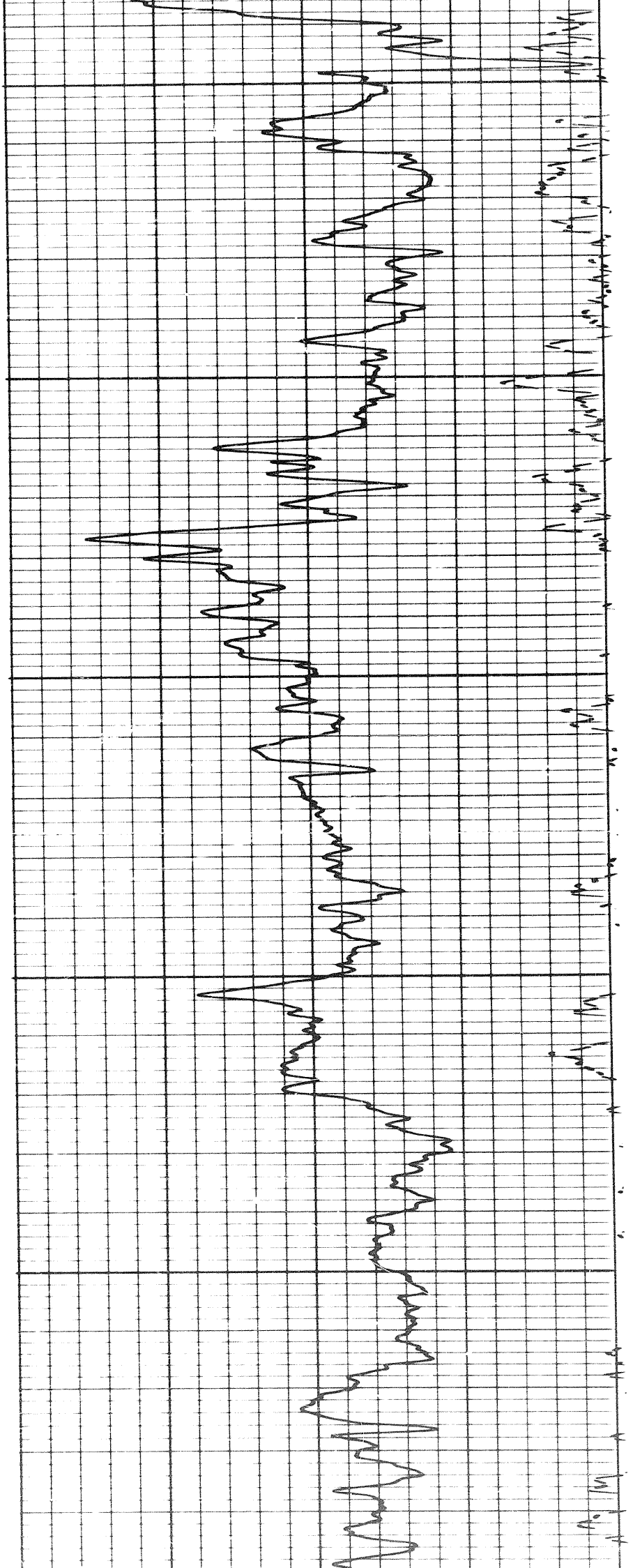


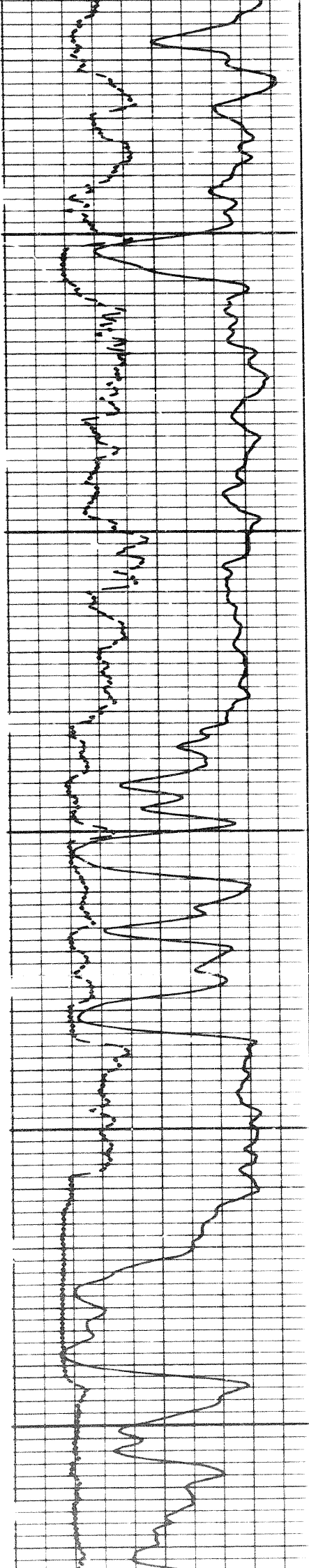


3100

3200

3300

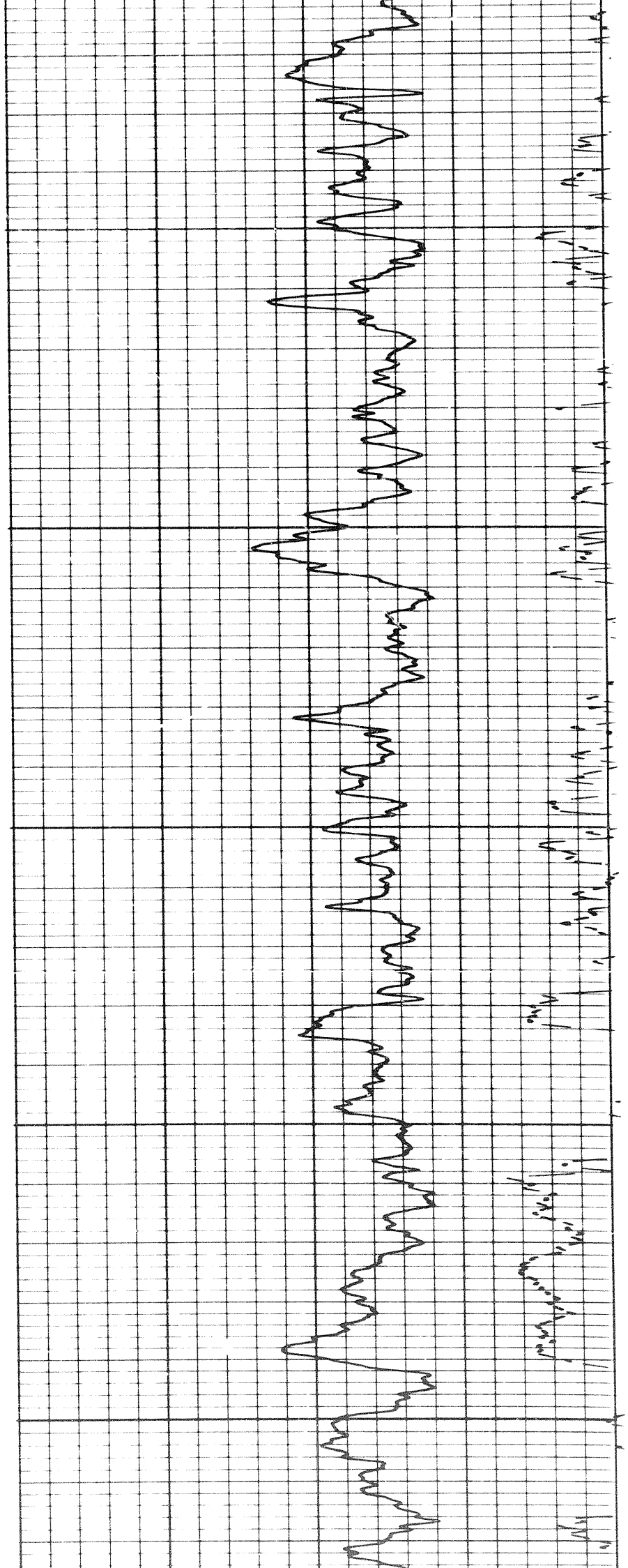




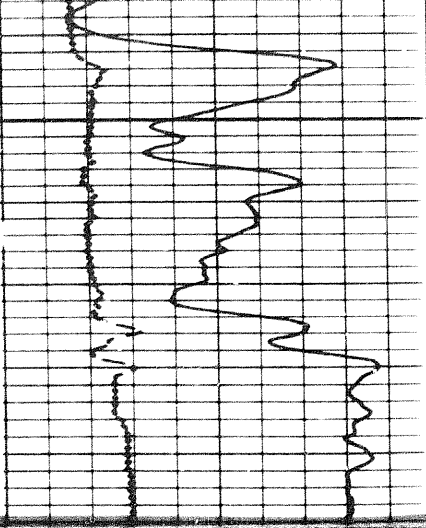
3300

3400

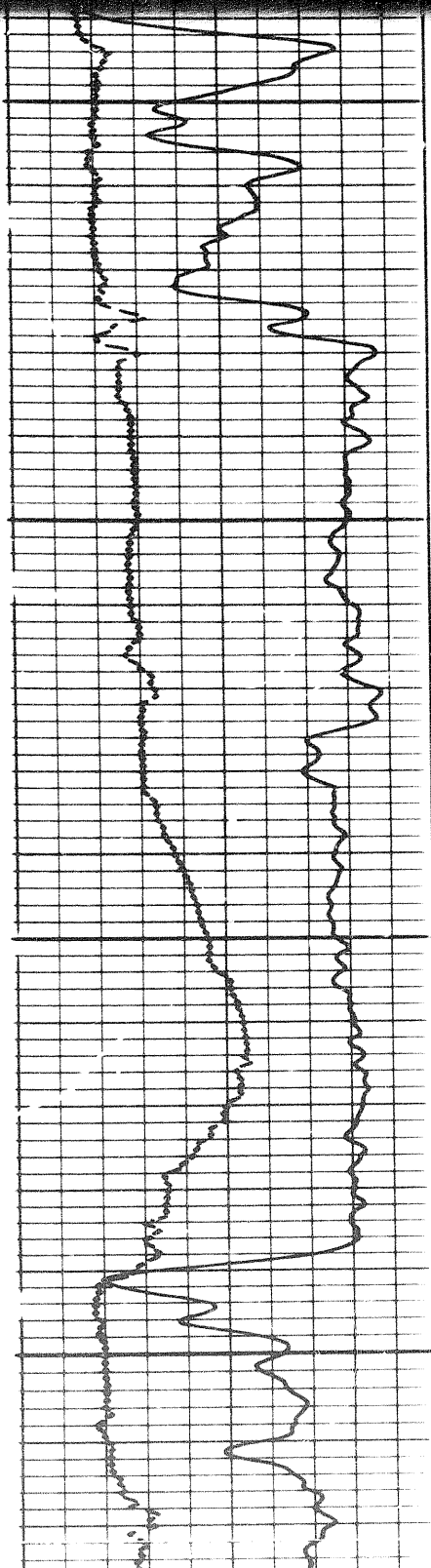
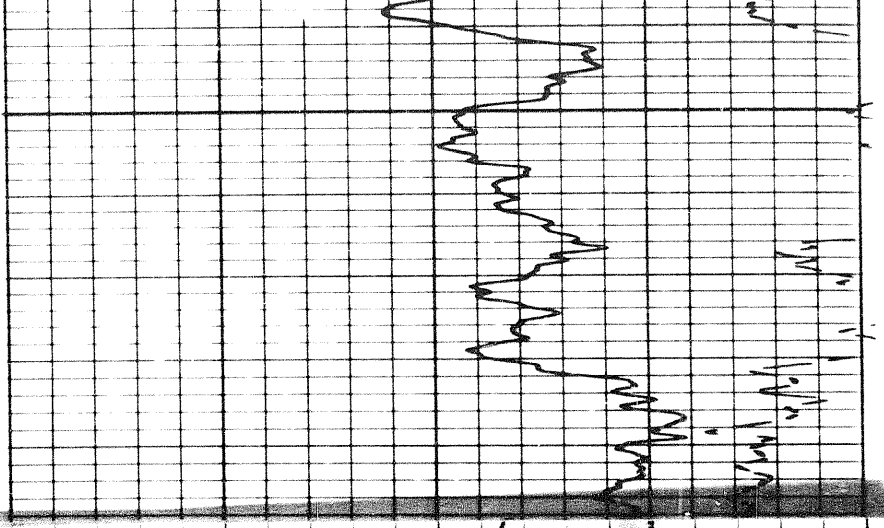
3500



306

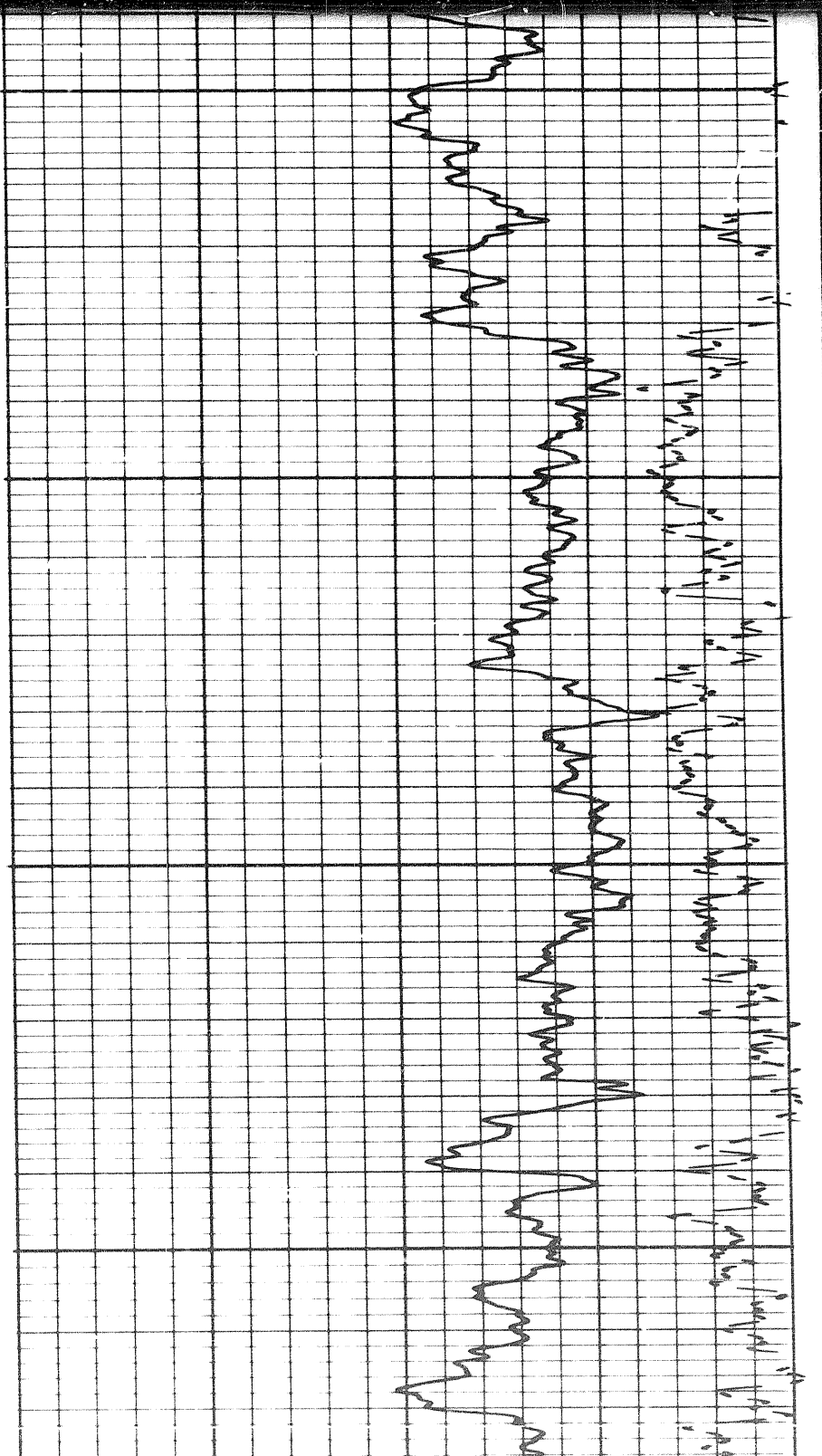


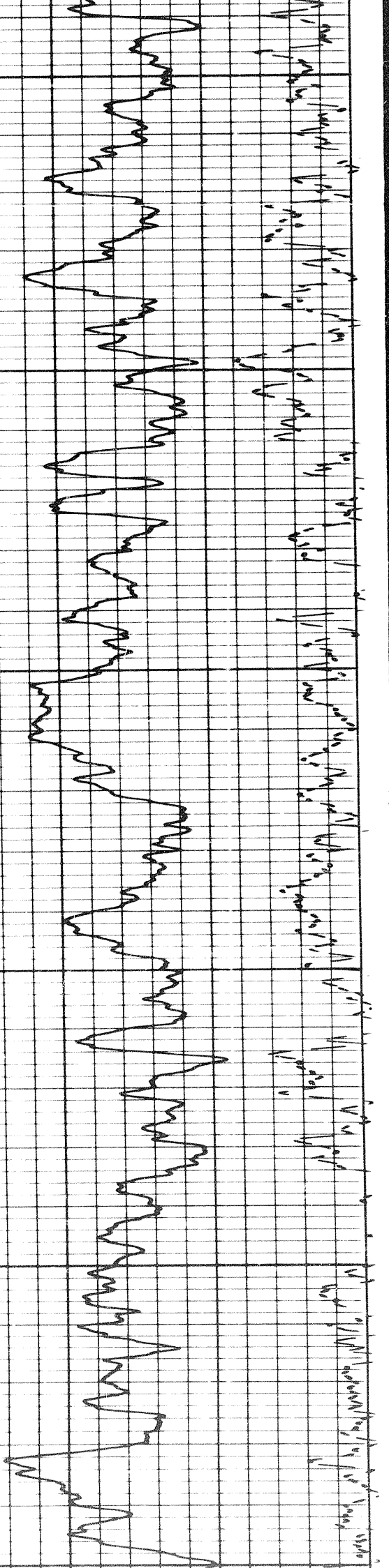
3500



3500

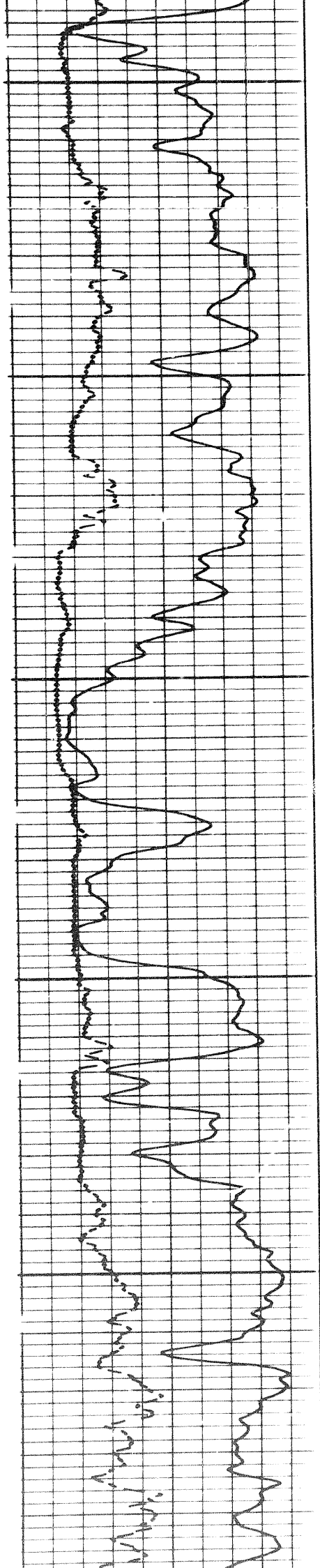
3600

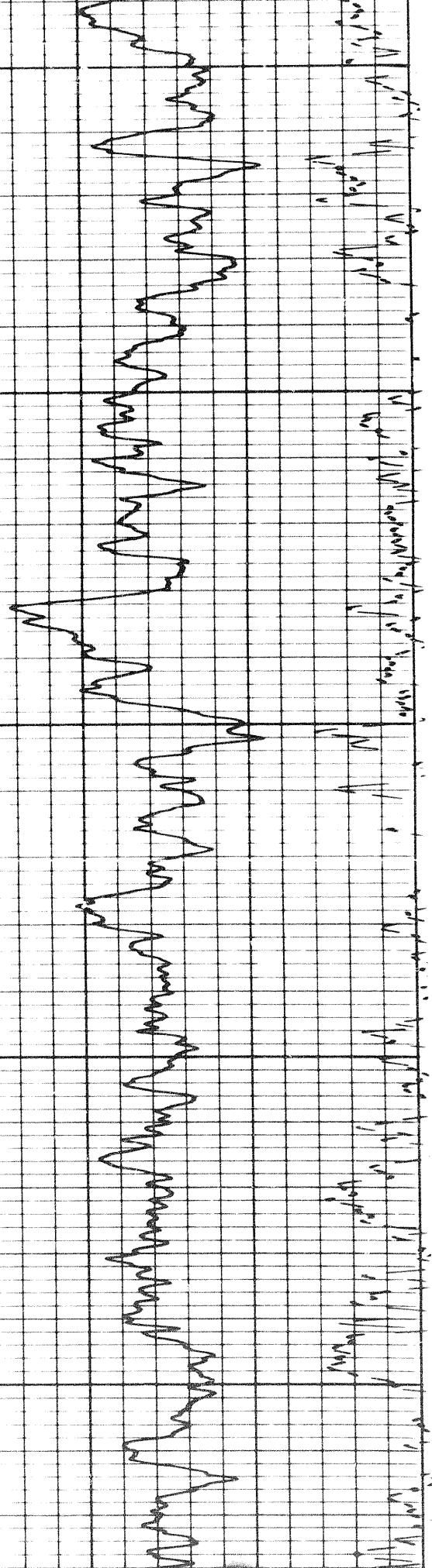




3700

3800

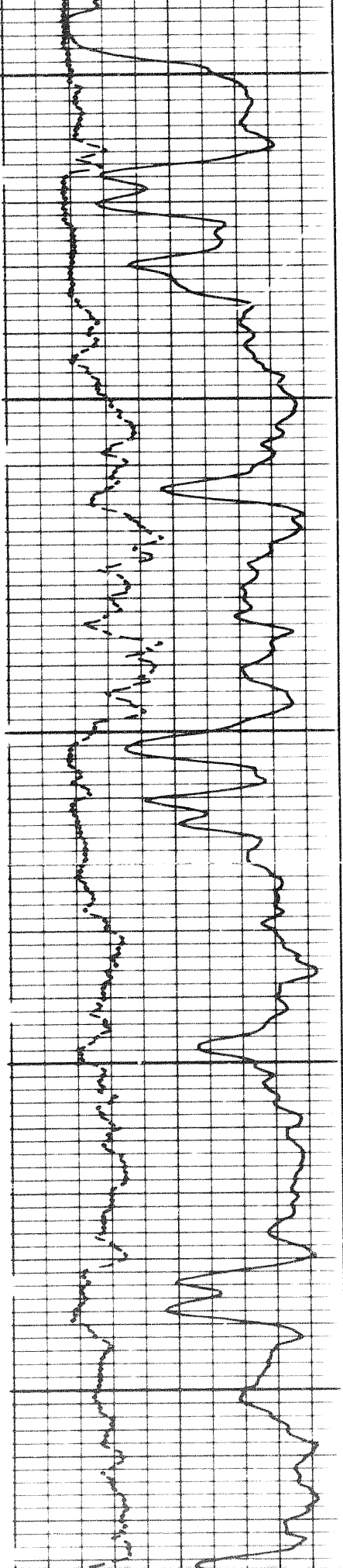


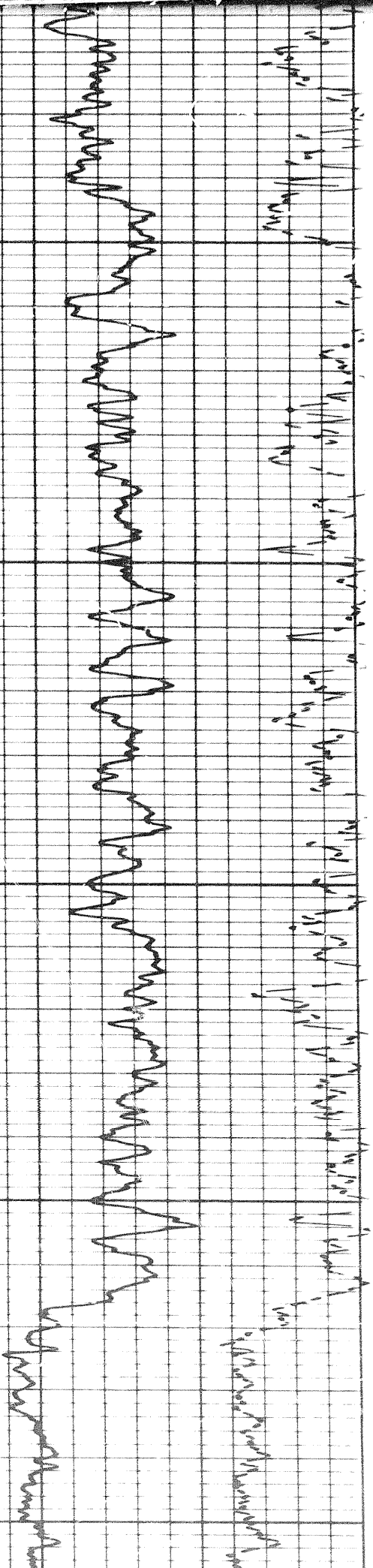


3800

3900

4000

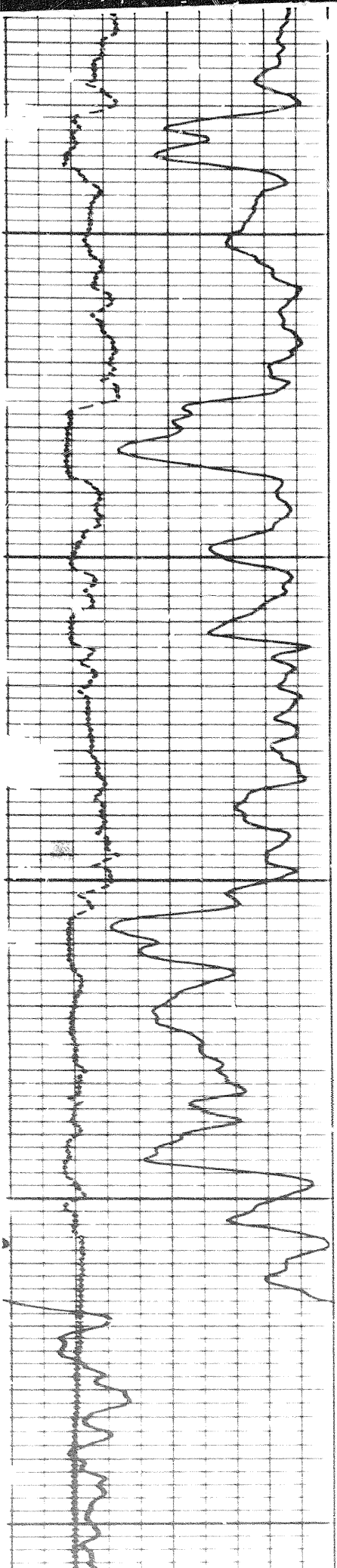


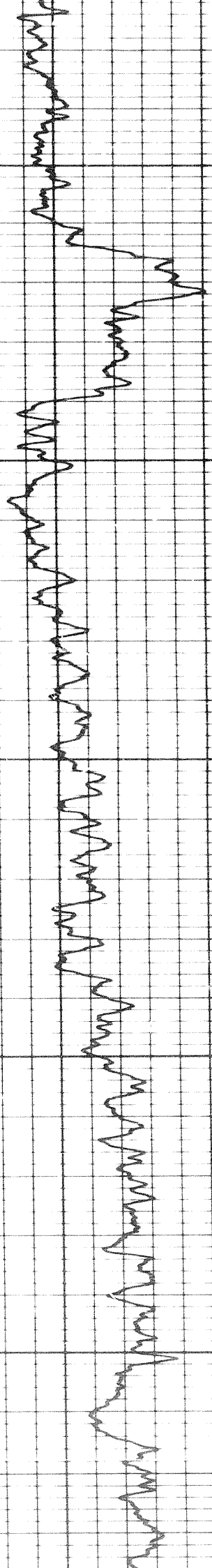
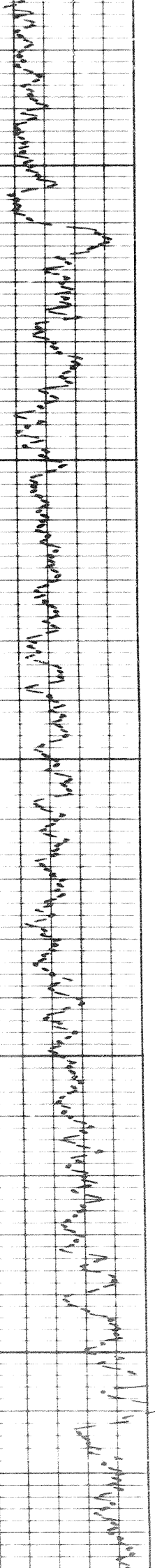


4000

4100

4200

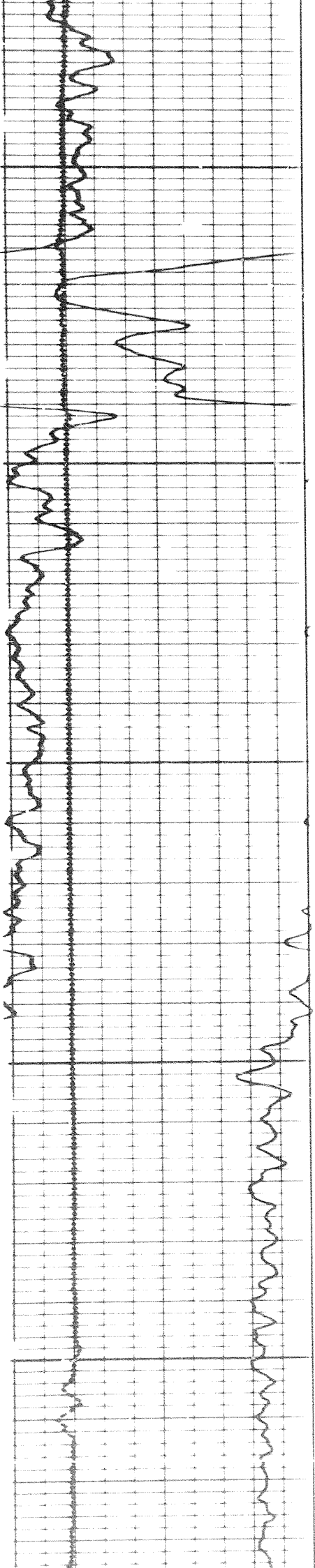




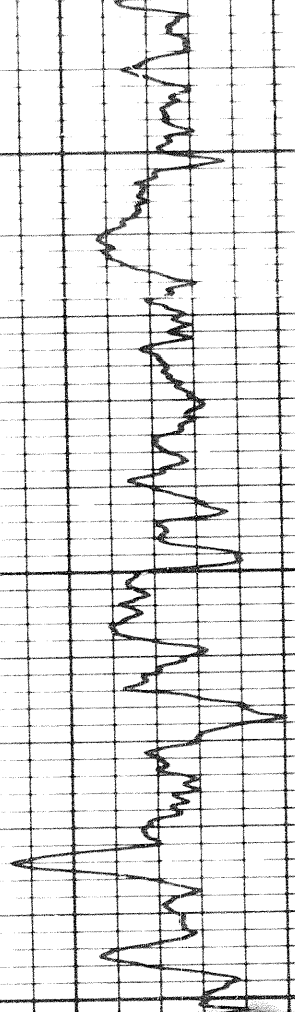
4200

4300

4400



Handwritten notes on the top right of the 4400 section, including a vertical column of characters and some illegible scribbles.

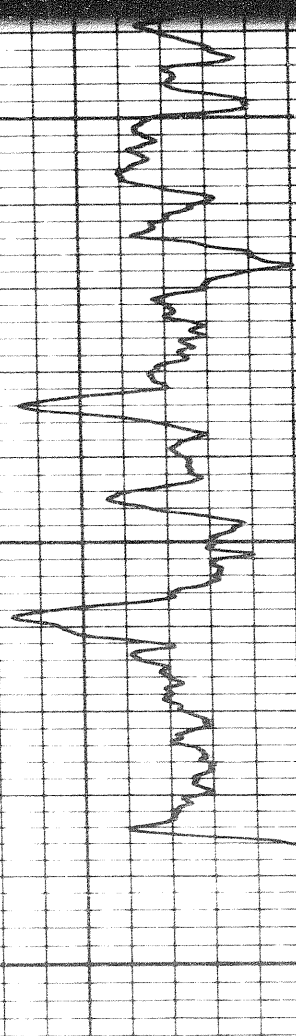


4400

430

SR
Caliper

Handwritten notes on the top right of the 4500 section, including a vertical column of characters and some illegible scribbles.

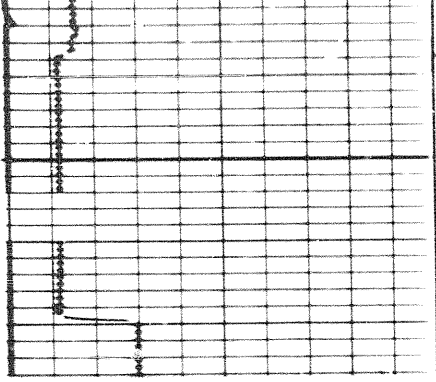


4500

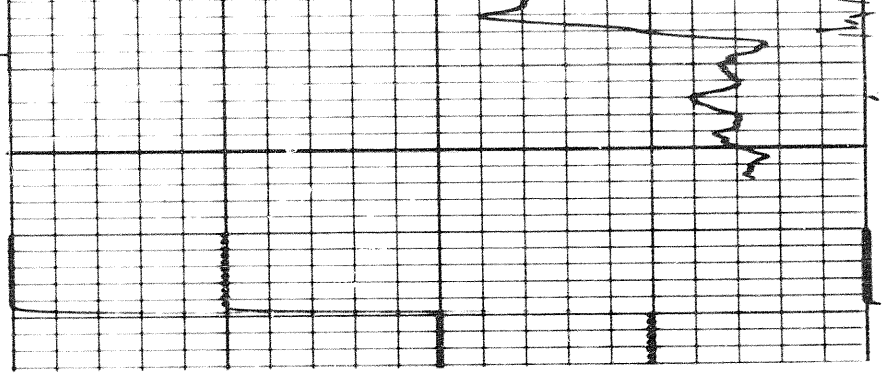
FR

GR
Caliper

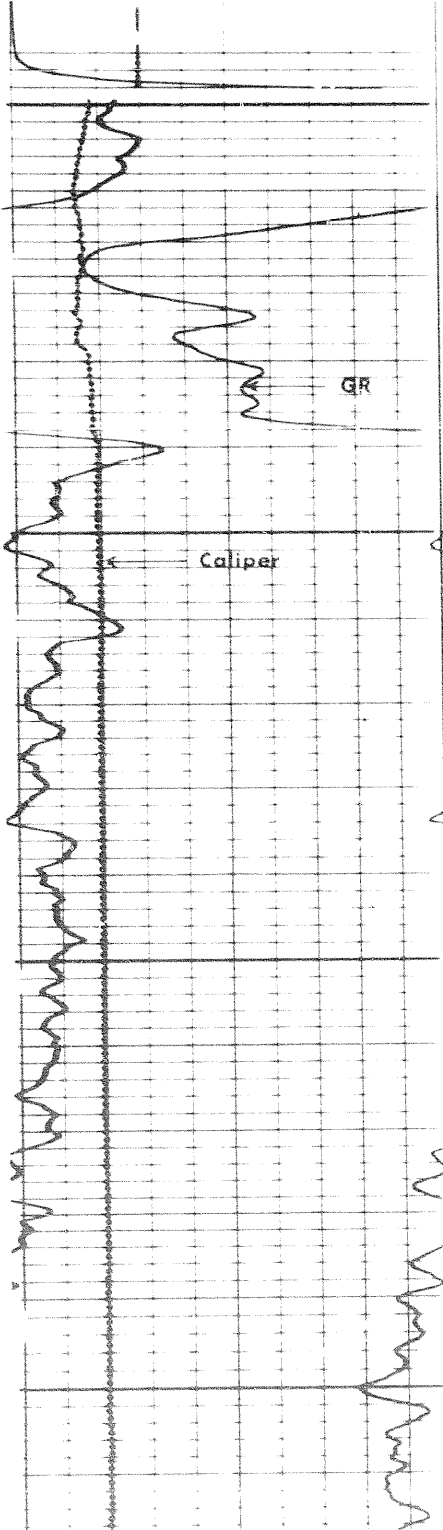
1



FR

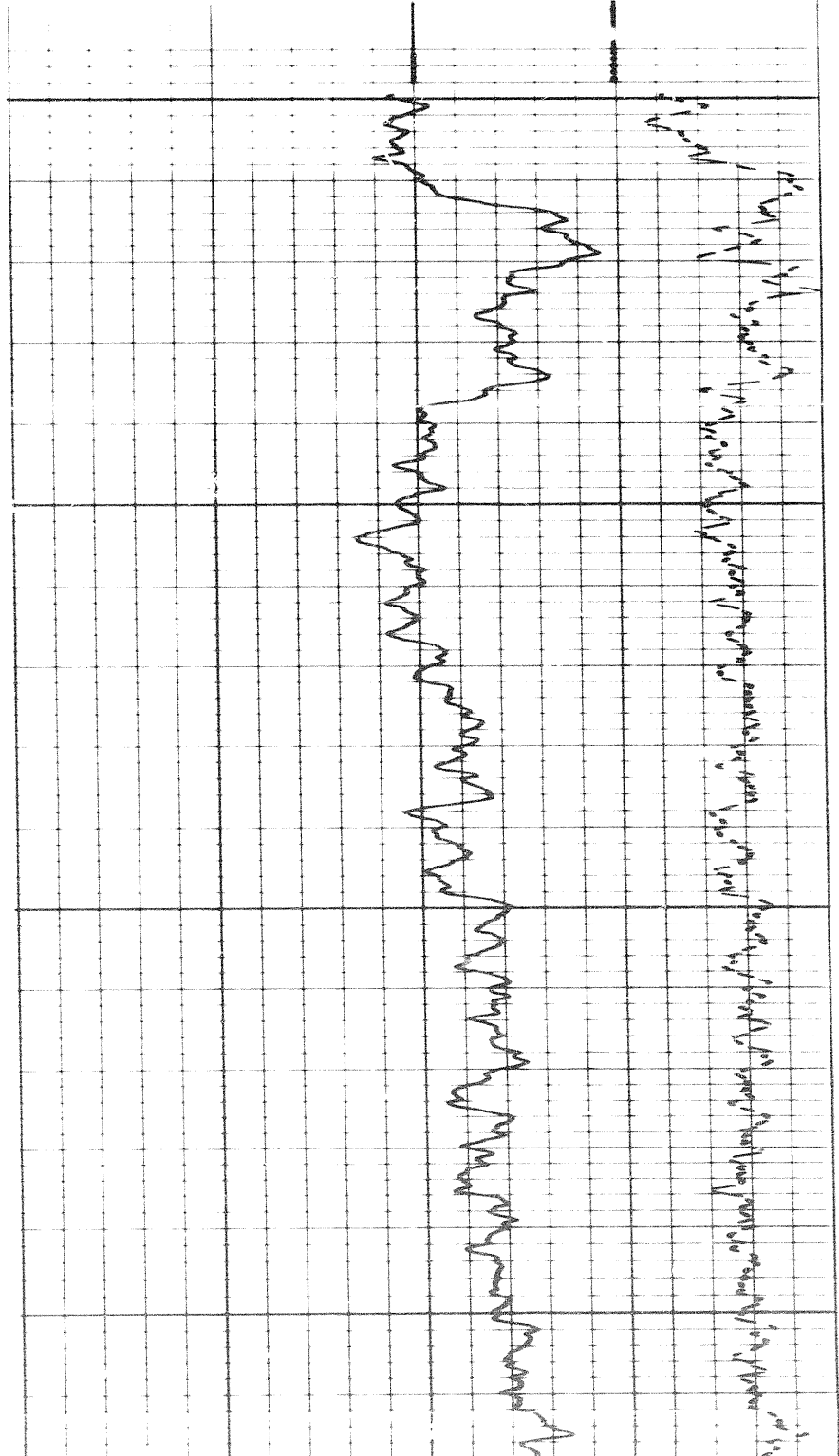


REPEAT SECTION

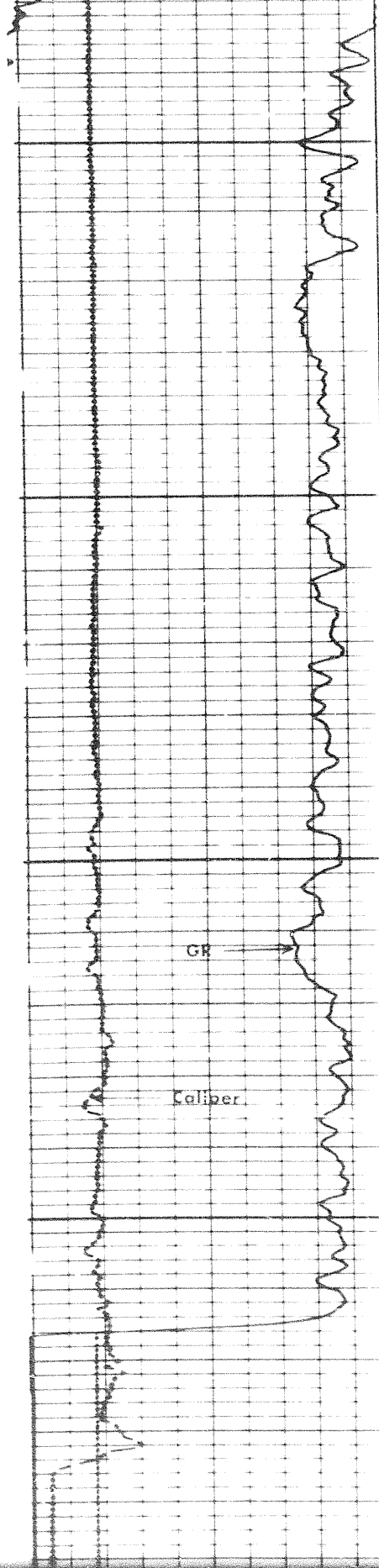


4200

4300



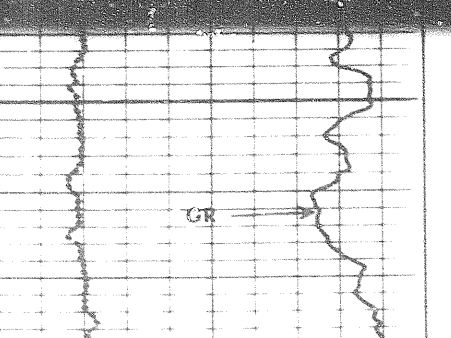
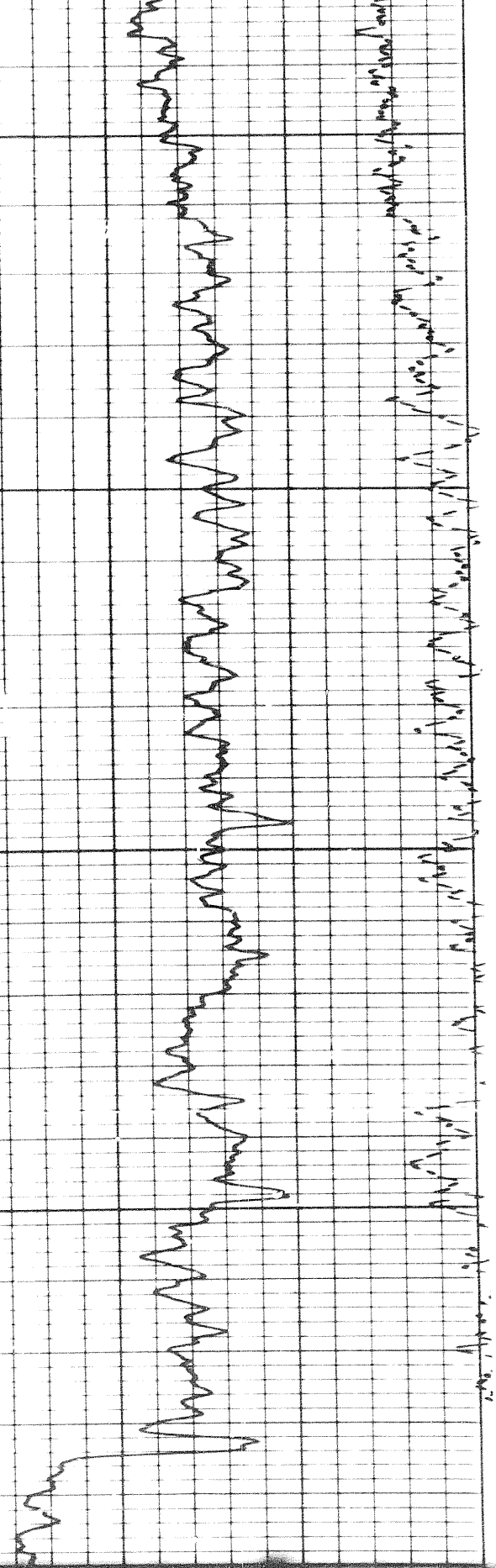
1087



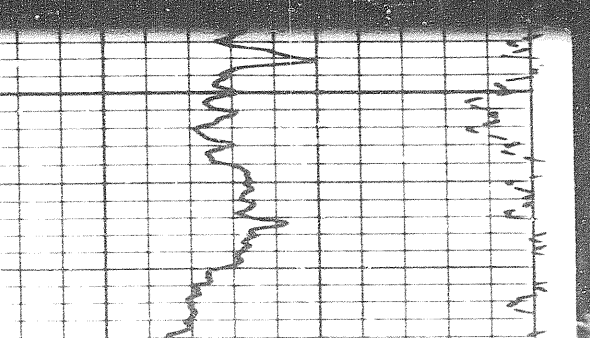
4400

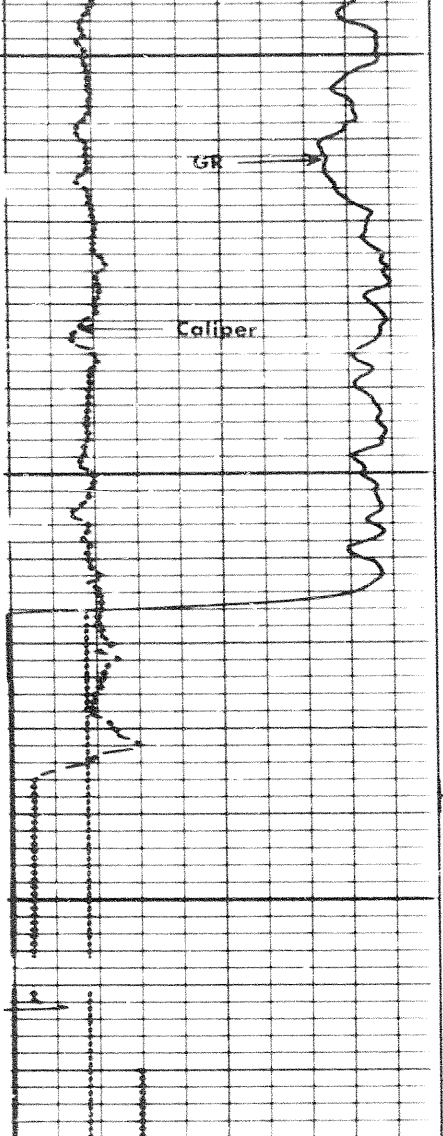
4500

FR



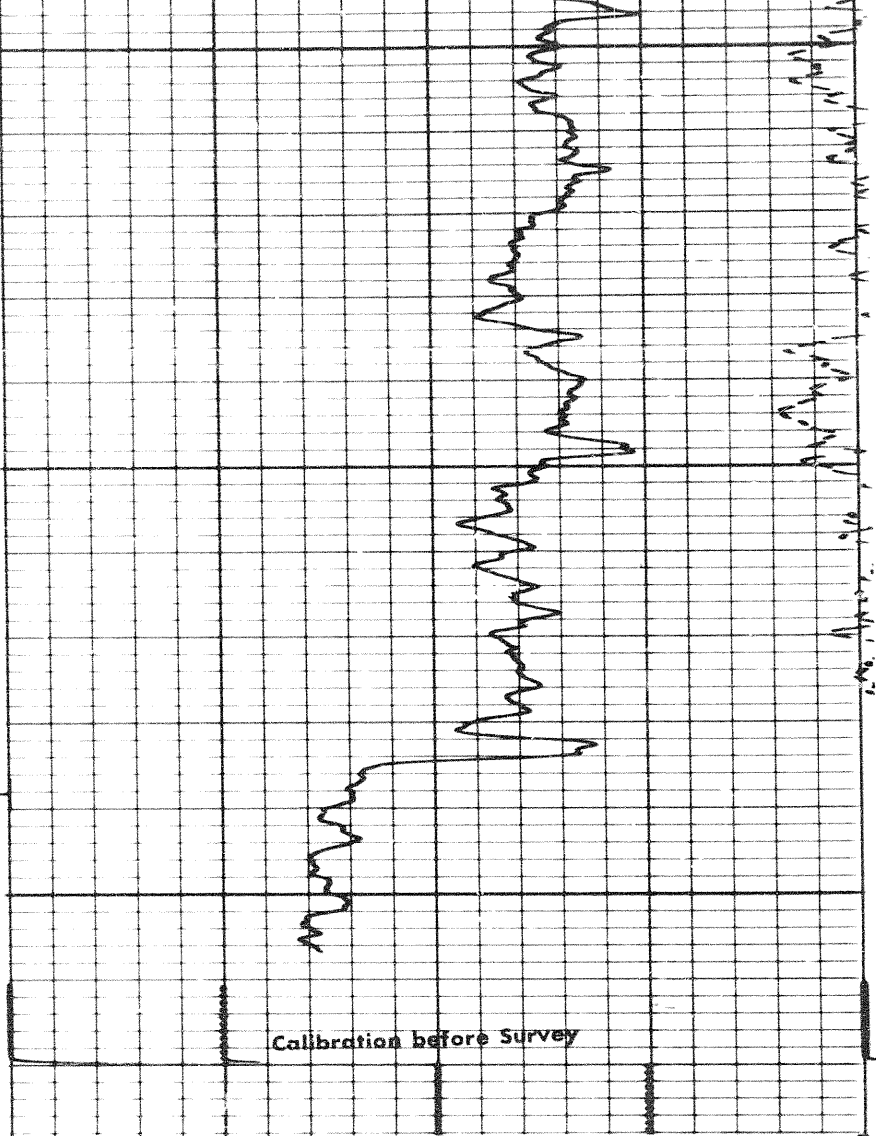
GR





4500

FR



Calibration before Survey

6	7	8	9	10	11	12	13	14
---	---	---	---	----	----	----	----	----

CALIPER
hole diameter in inches

(-)	0	(+)
0.25		0.25

DENSITY CORRECTION
 $\Delta\rho$ - gm/cc

Sens	300	T.C.	
Zero	0	div to left	120
	120		240

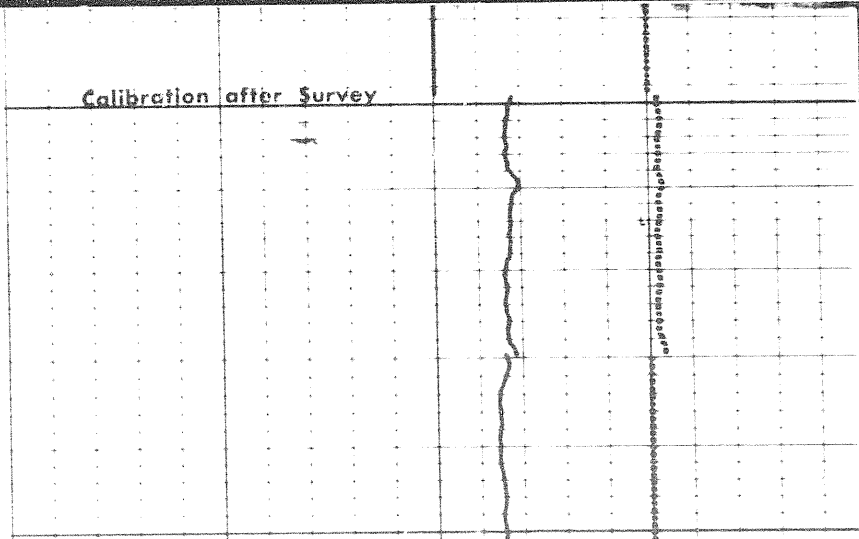
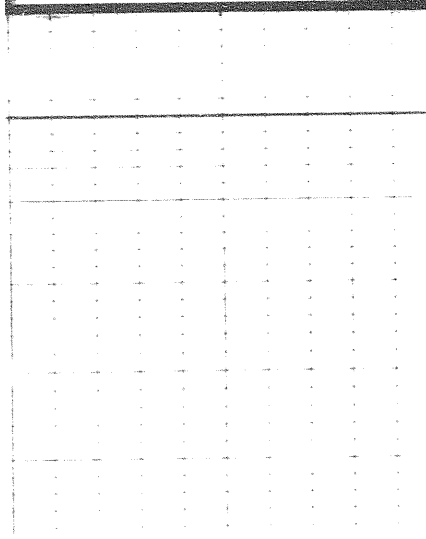
Speed in FPM

2.0	2.5	3.0
-----	-----	-----

GAMMA RAY
API UNITS

DEPTHS

BULK DENSITY
 ρ_b - gm/cc



Calibration after Survey

Calibration before Survey



COMPANY

WELL

FIELD PROVINCE TERRITORY

11 of 11