



COMPANY WESTERN MINERALS LTD.

WELL WESTERN MINERALS N HOPE

FIELD WILD CAT

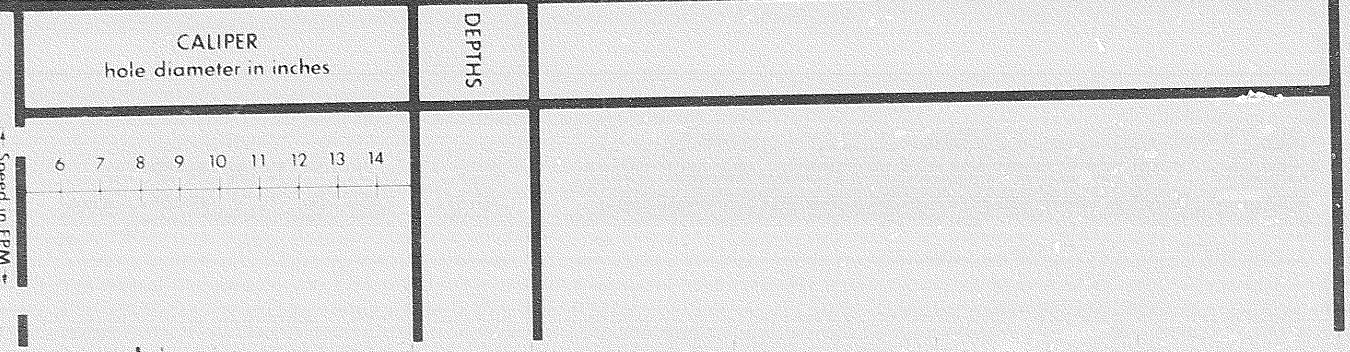
PROVINCE YUKON

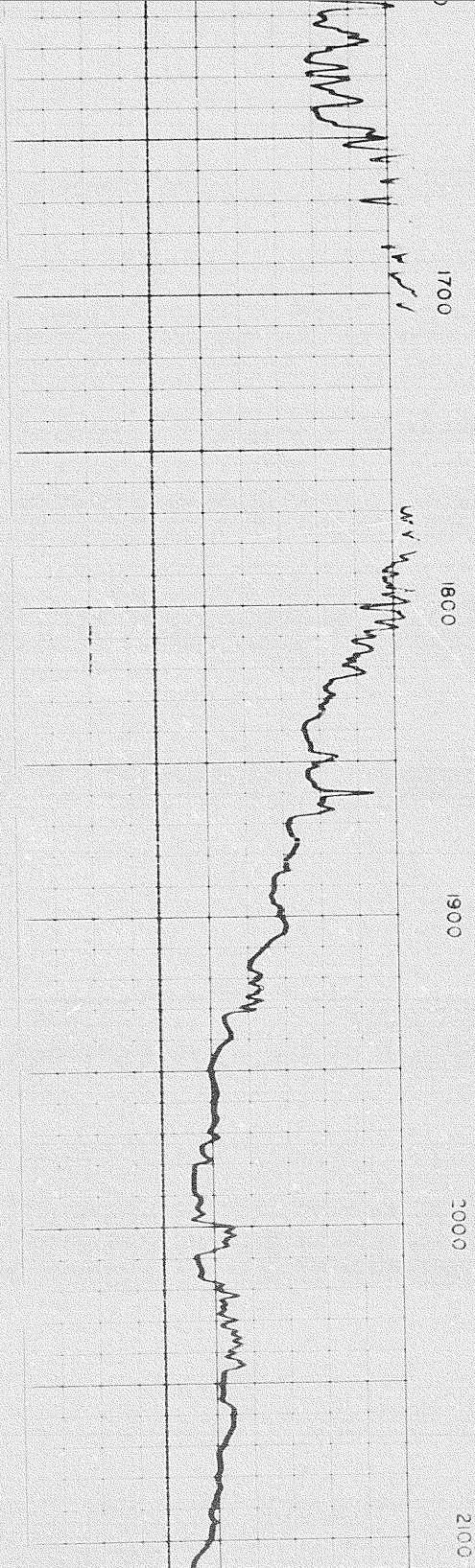
LOCATION 66° 33' 22" N LAT  
138° 25' 30" W LONG

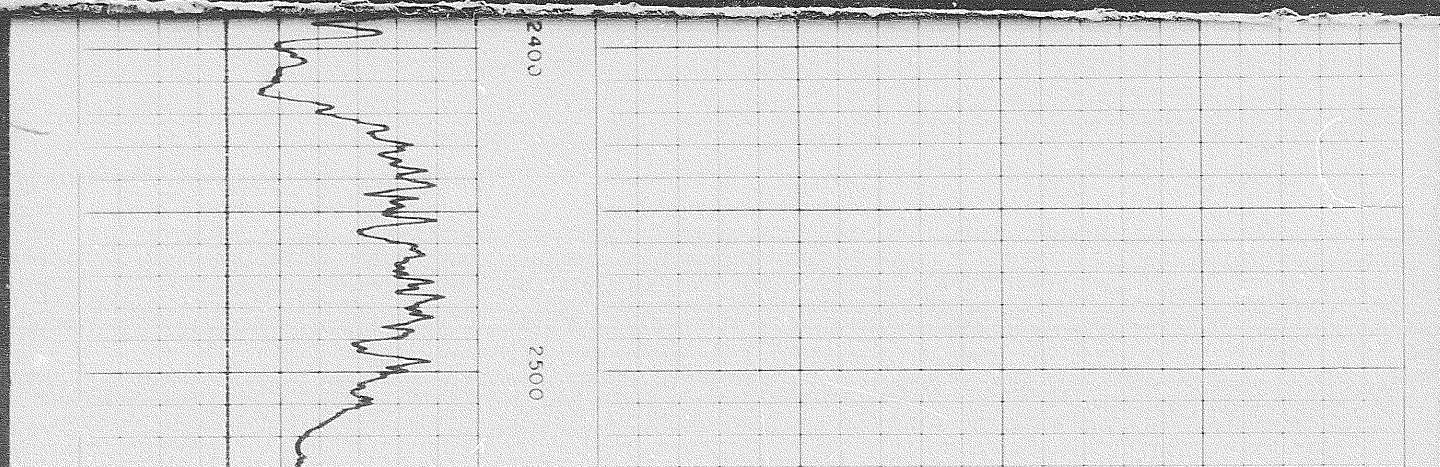
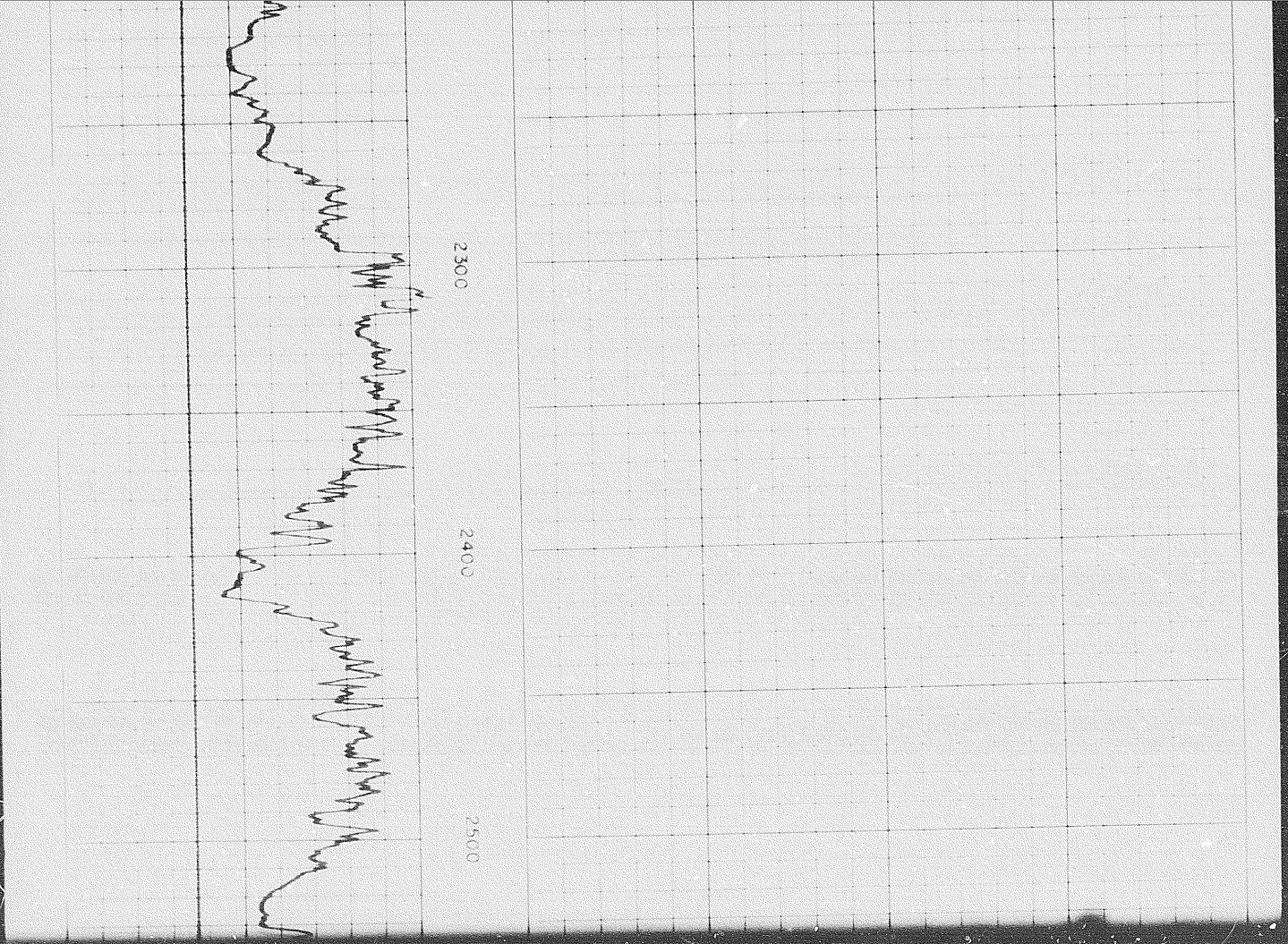
Permanent Datum GL Elev 1136  
Log Measured From KB 14 Ft Above Perm Datum  
Other Services: SLC-GR, ES, FDC-GR, SNP-GR, HDI, CDR, TTR  
ELEV KB 1150  
GL 1136  
CMB

16 JUNE 70	ONE			
	8060			
	1522			
	6538			
	8061			
	8120			
	1522			
	1522			
	GEL			
	9.1	100		
	9.5			
	9.2			
	4.66 @ 58' F	@	F	
	- @ 153' F	@	F	
	4.82 @ 57' F	@	F	
	- @	@	F	
	TANK @	@	F	
	8 3/4"			
	2.5 HRS			
	OSUC-343 REM			
	PORTH			
	GILBREATH			

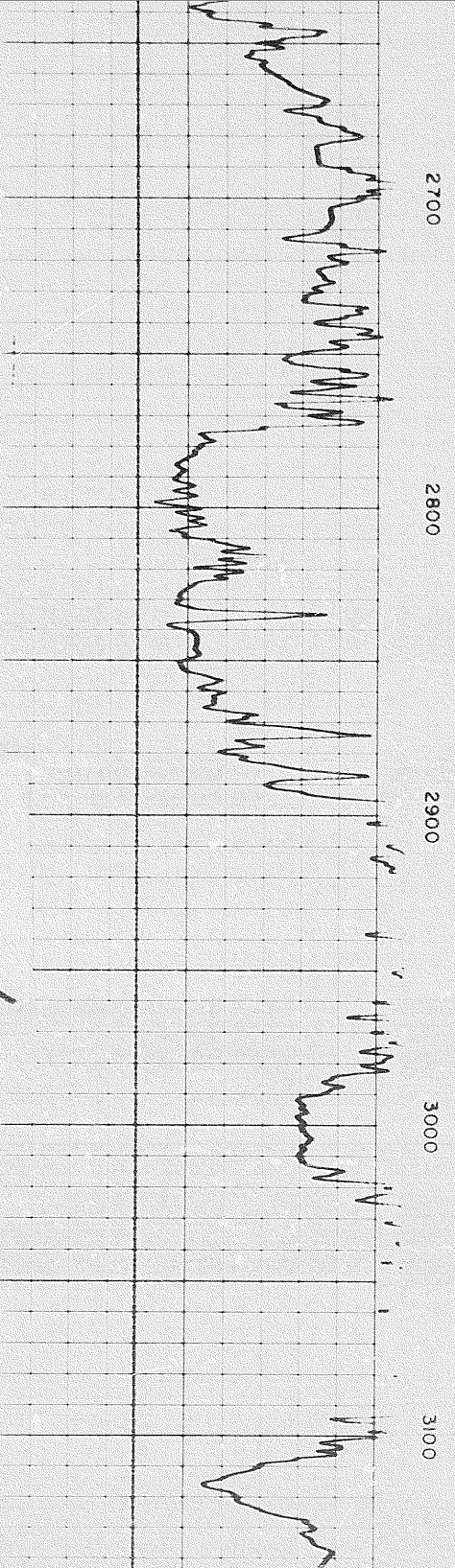
REMARKS

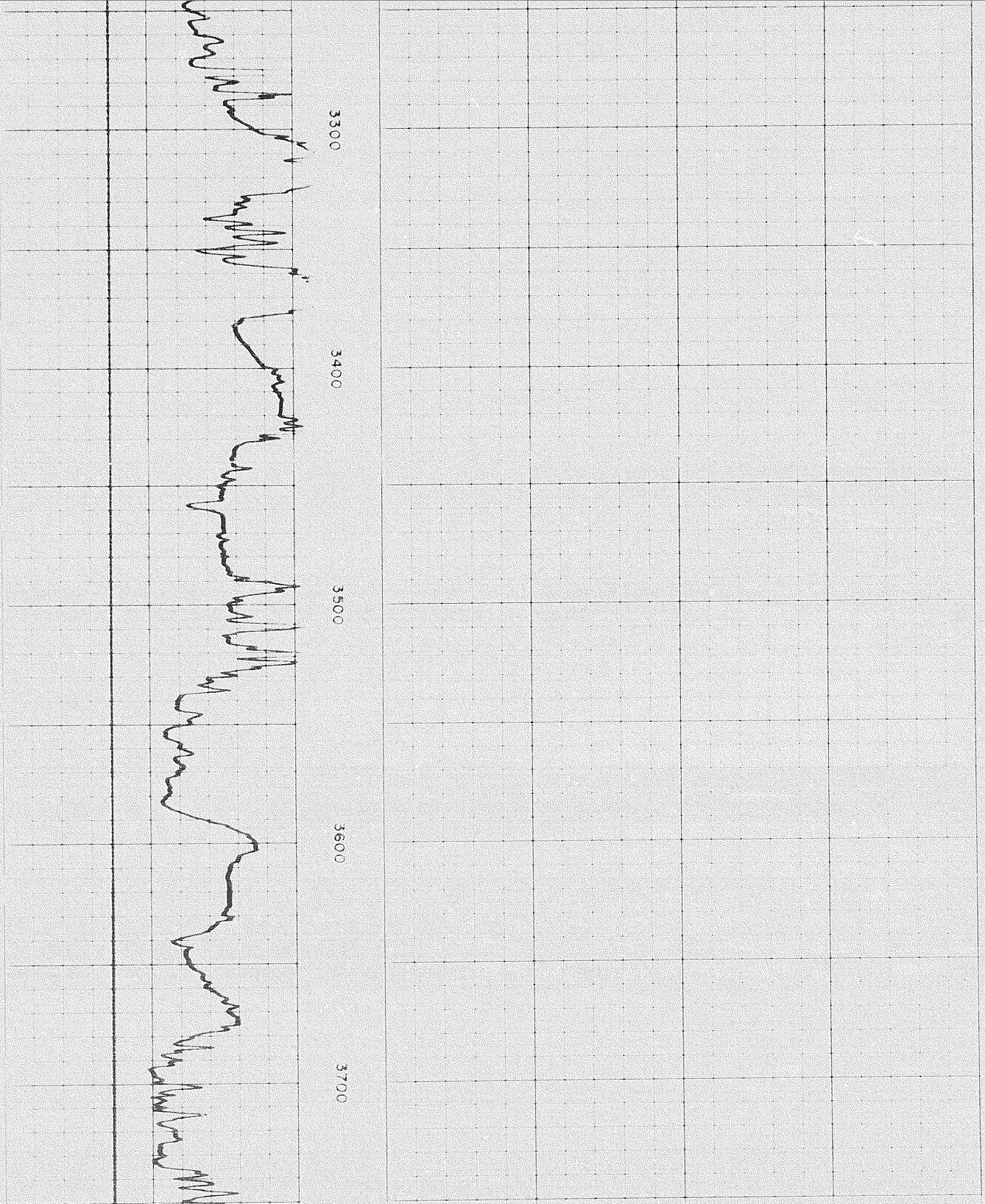


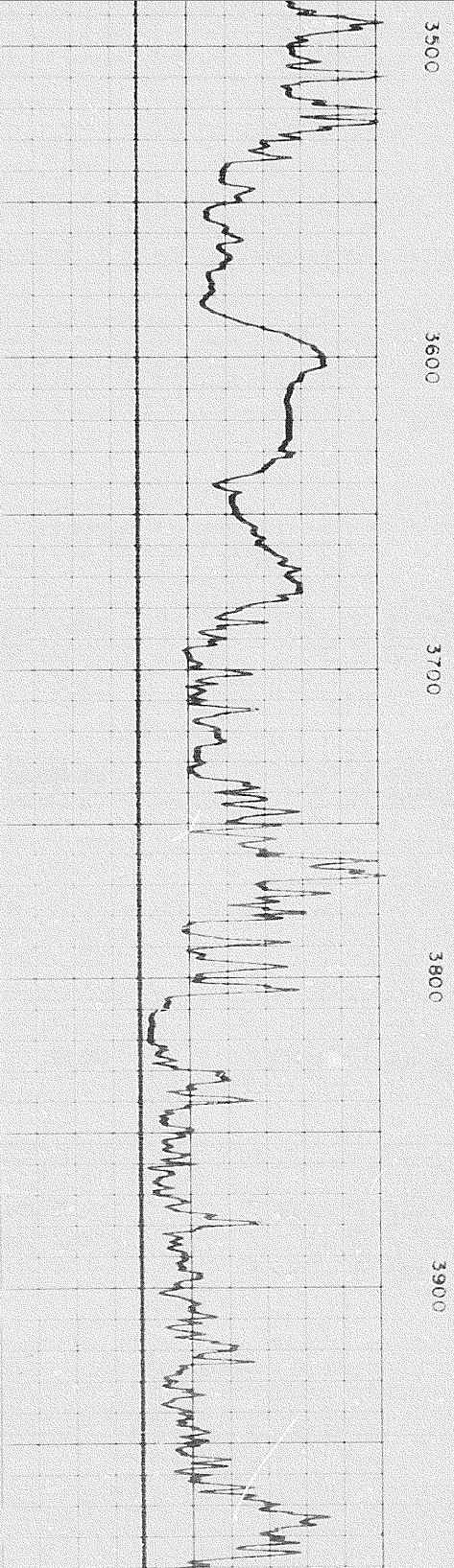


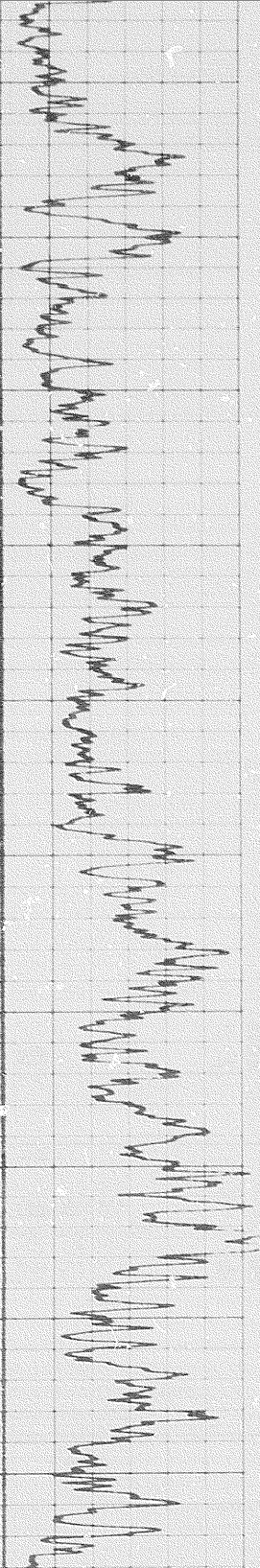


201









4000

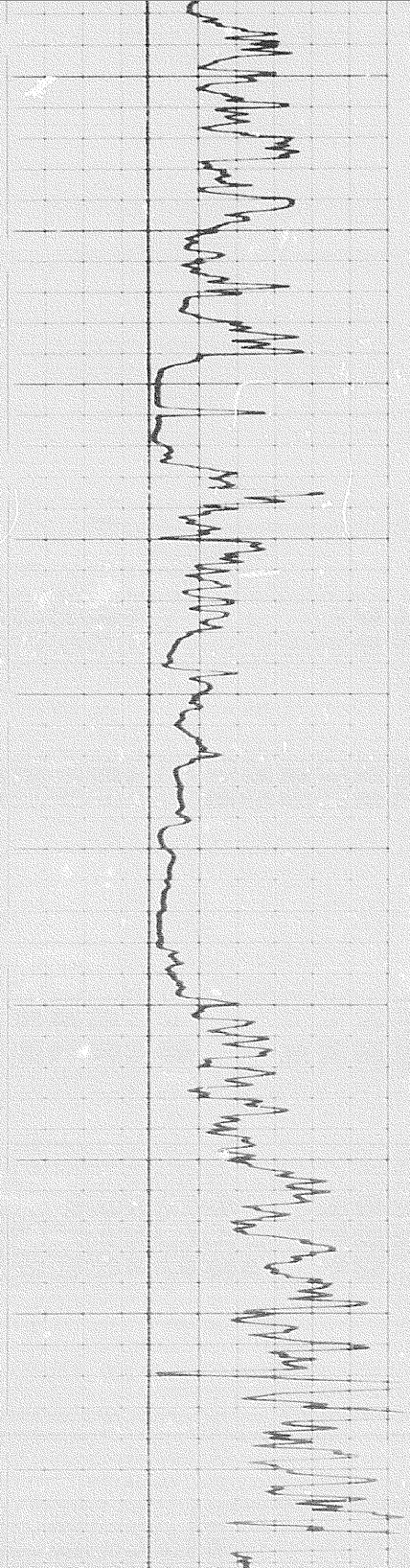
4100

4200

4300

4400

30



4600

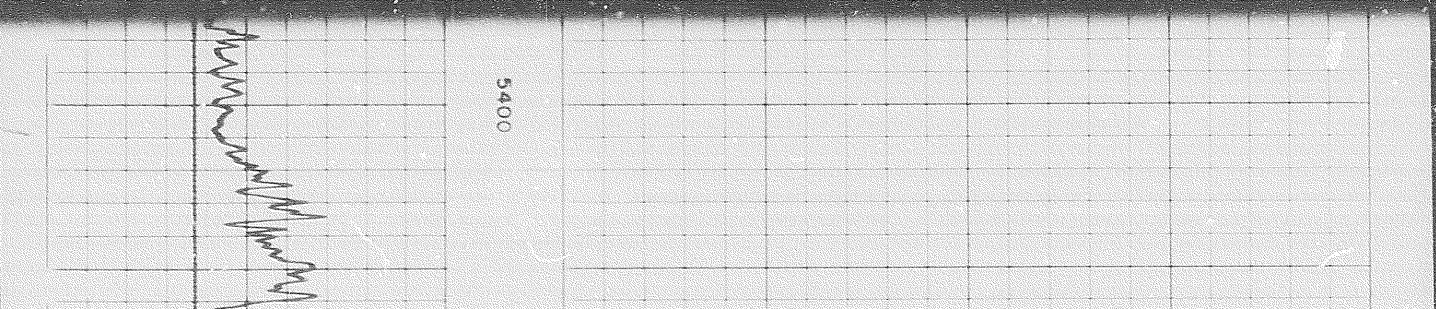
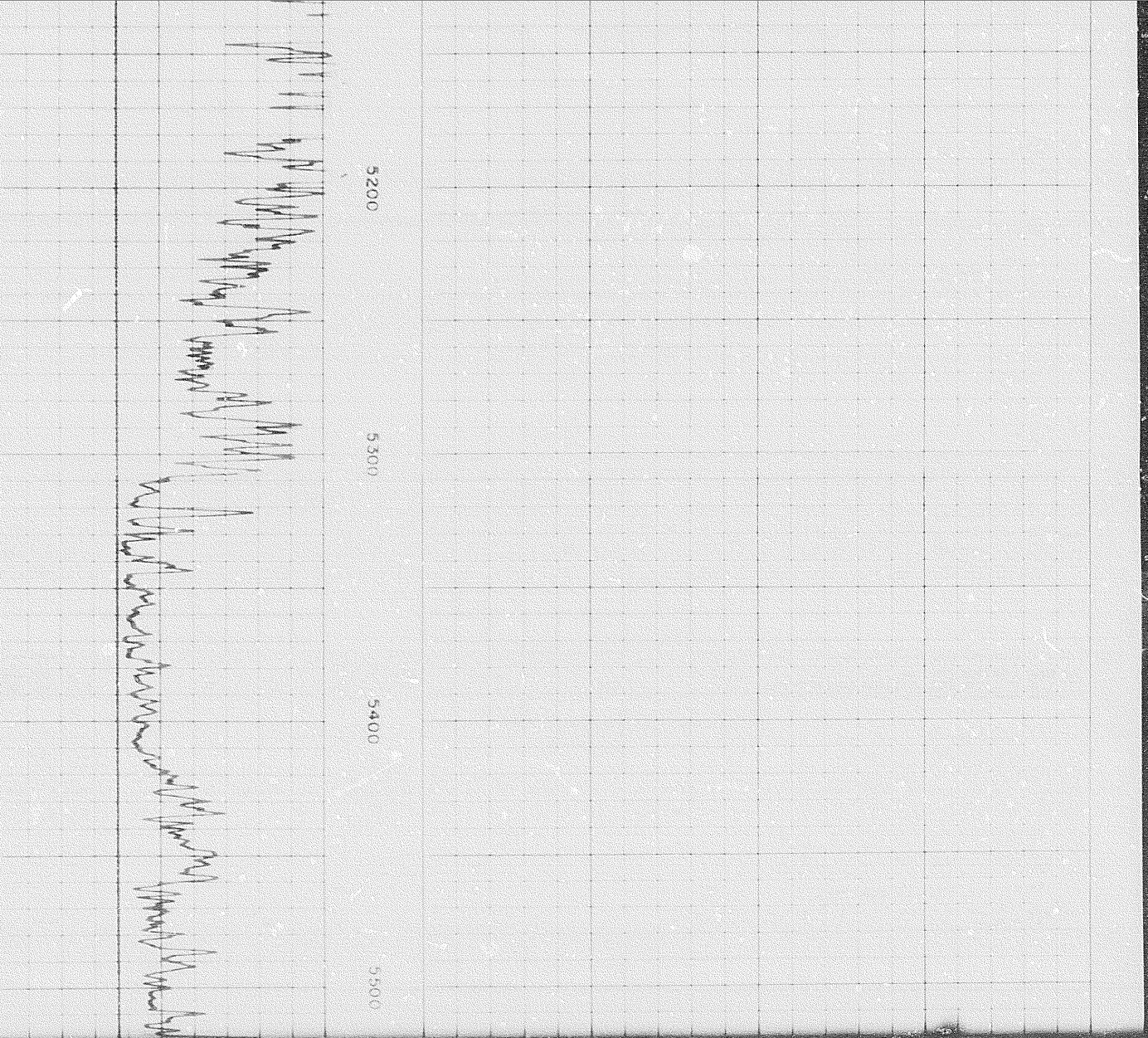
4700

4800

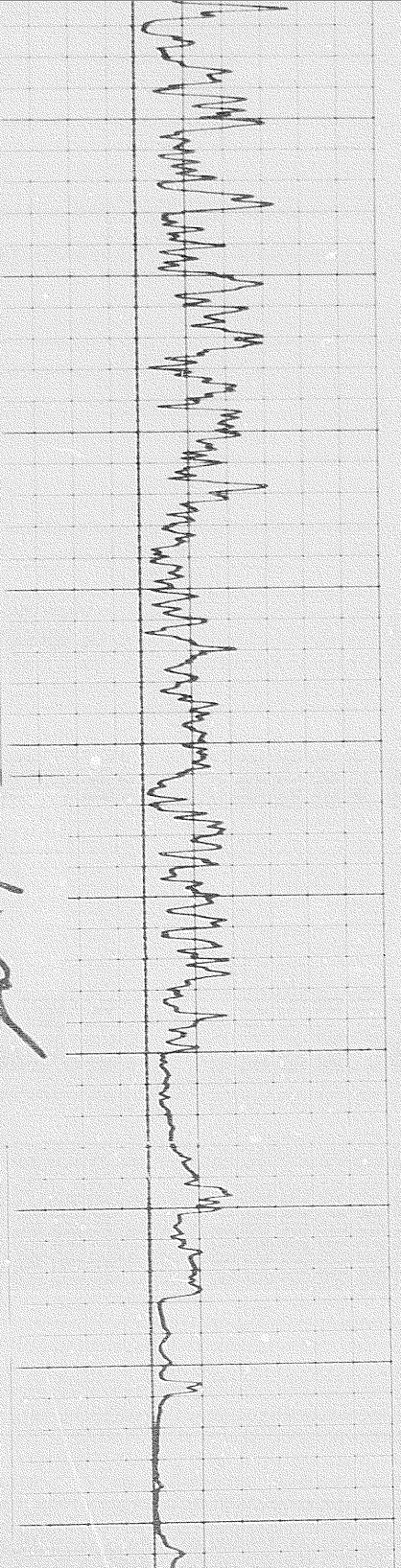
4900

5000





5



5600

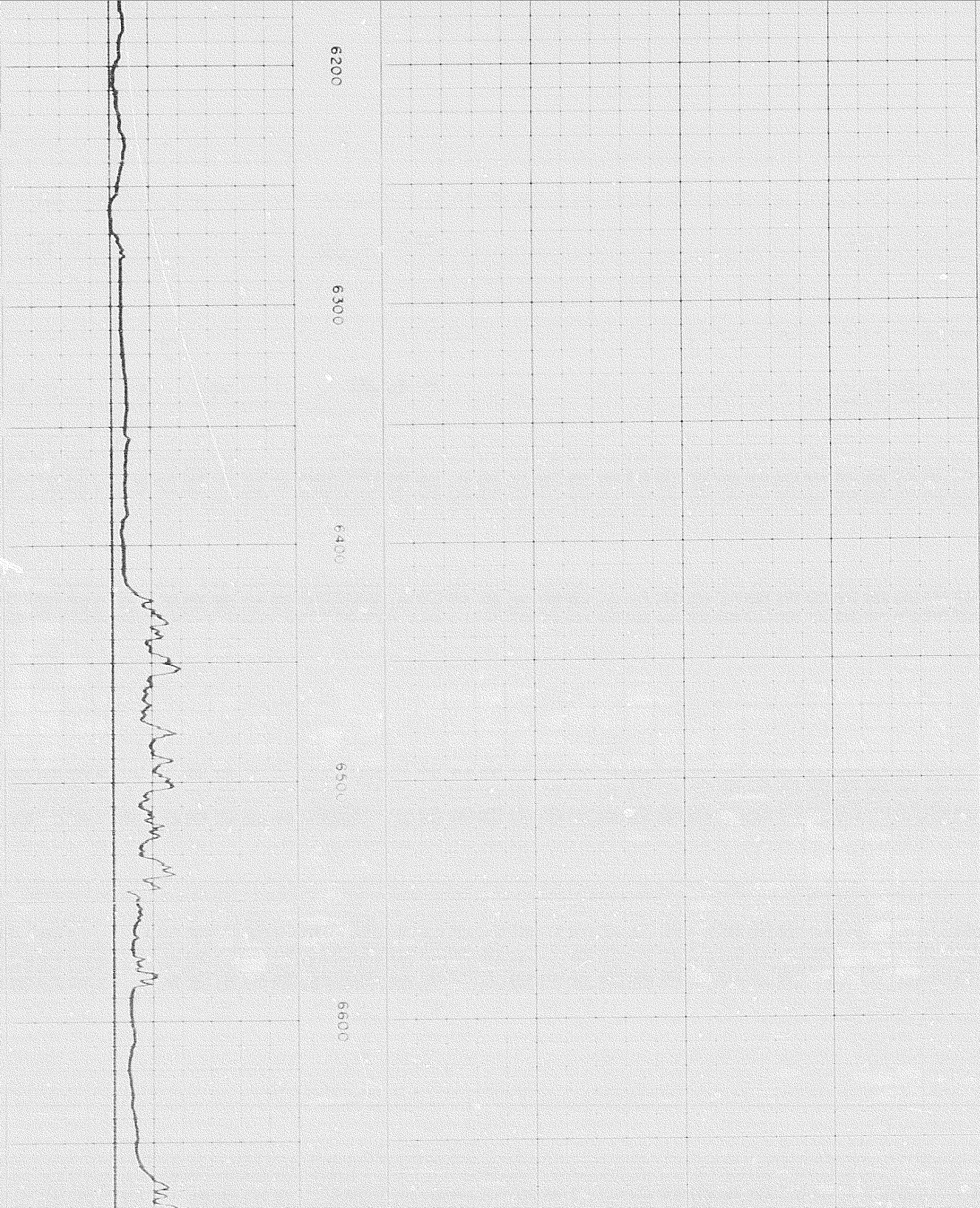
5700

5800

5900

6000

4 of



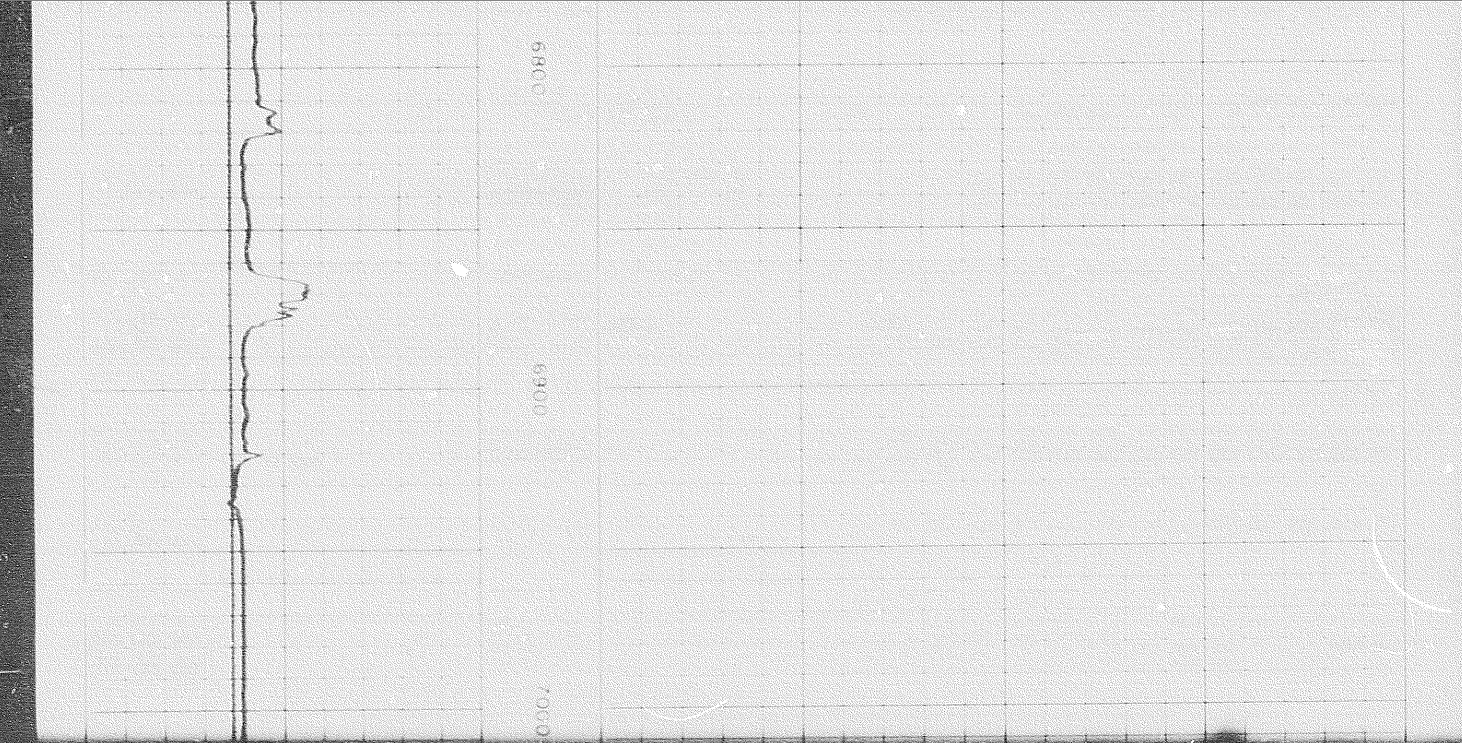
6200

6300

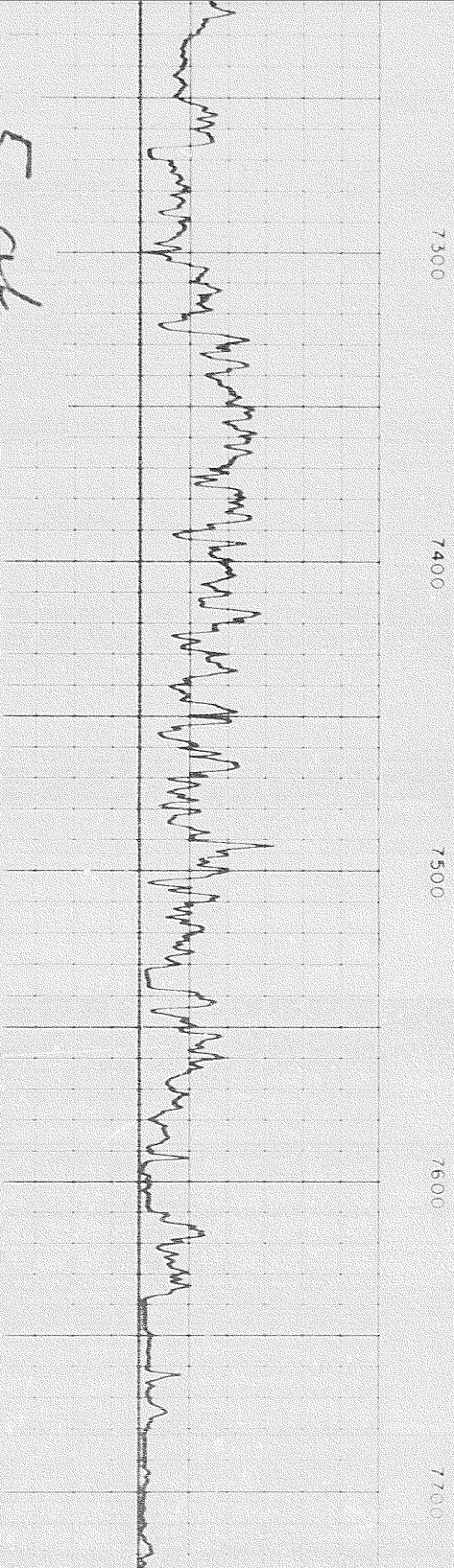
6400

6500

6600



5 of

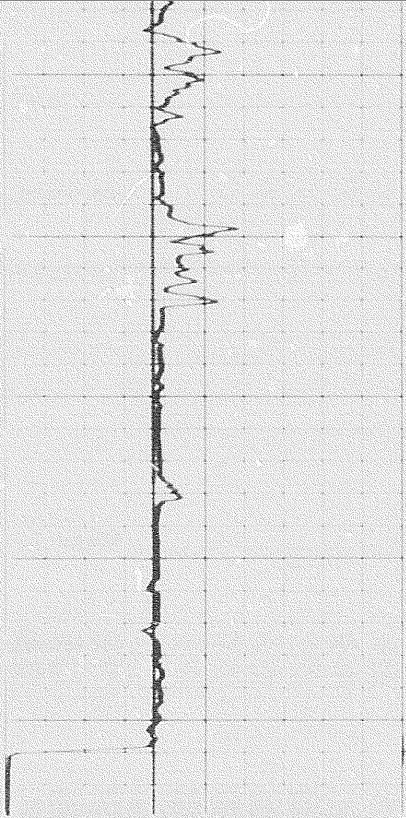


Speed in FPM

6 7 8 9 10 11 12 13 14

Width in inches

6 7 8 9 10 11 12 13 14



7900

8000

FR

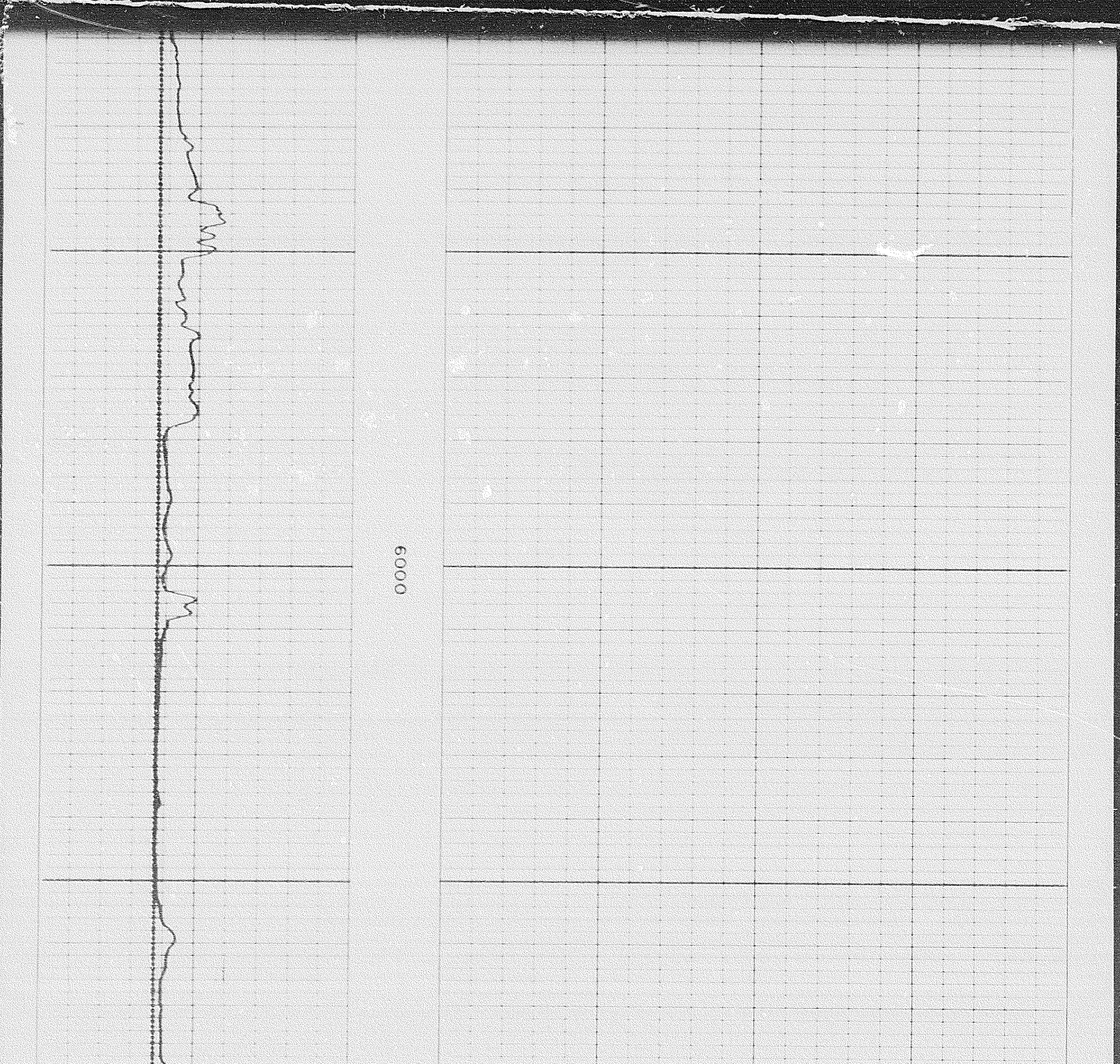
CALIPER  
hole diameter in inches

DEPTH

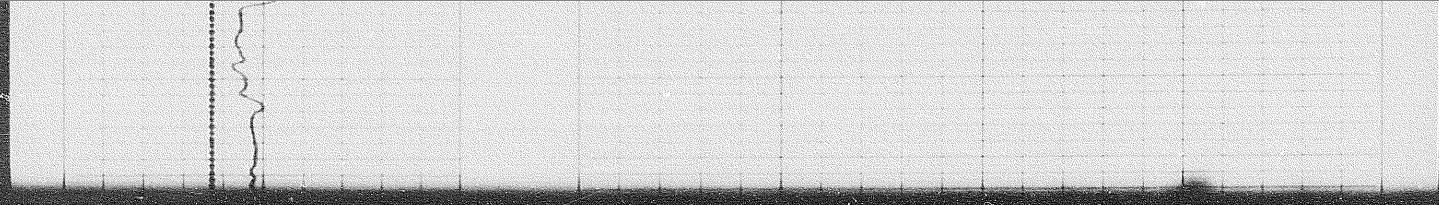
DETAIL LOG 5' = 100

CALIPER  
hole diameter in inches

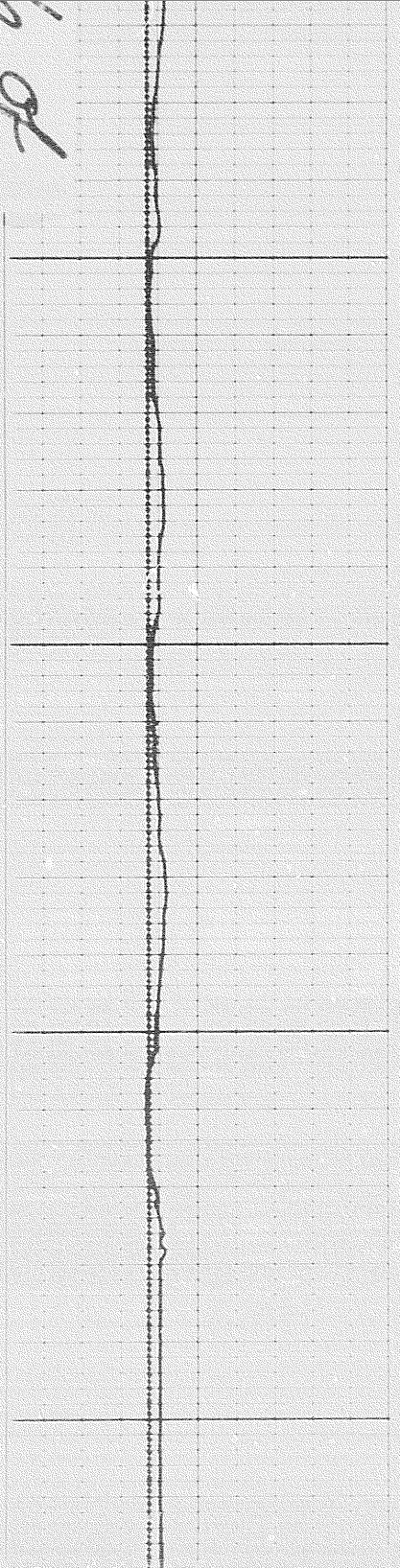
DEPTH



0.009

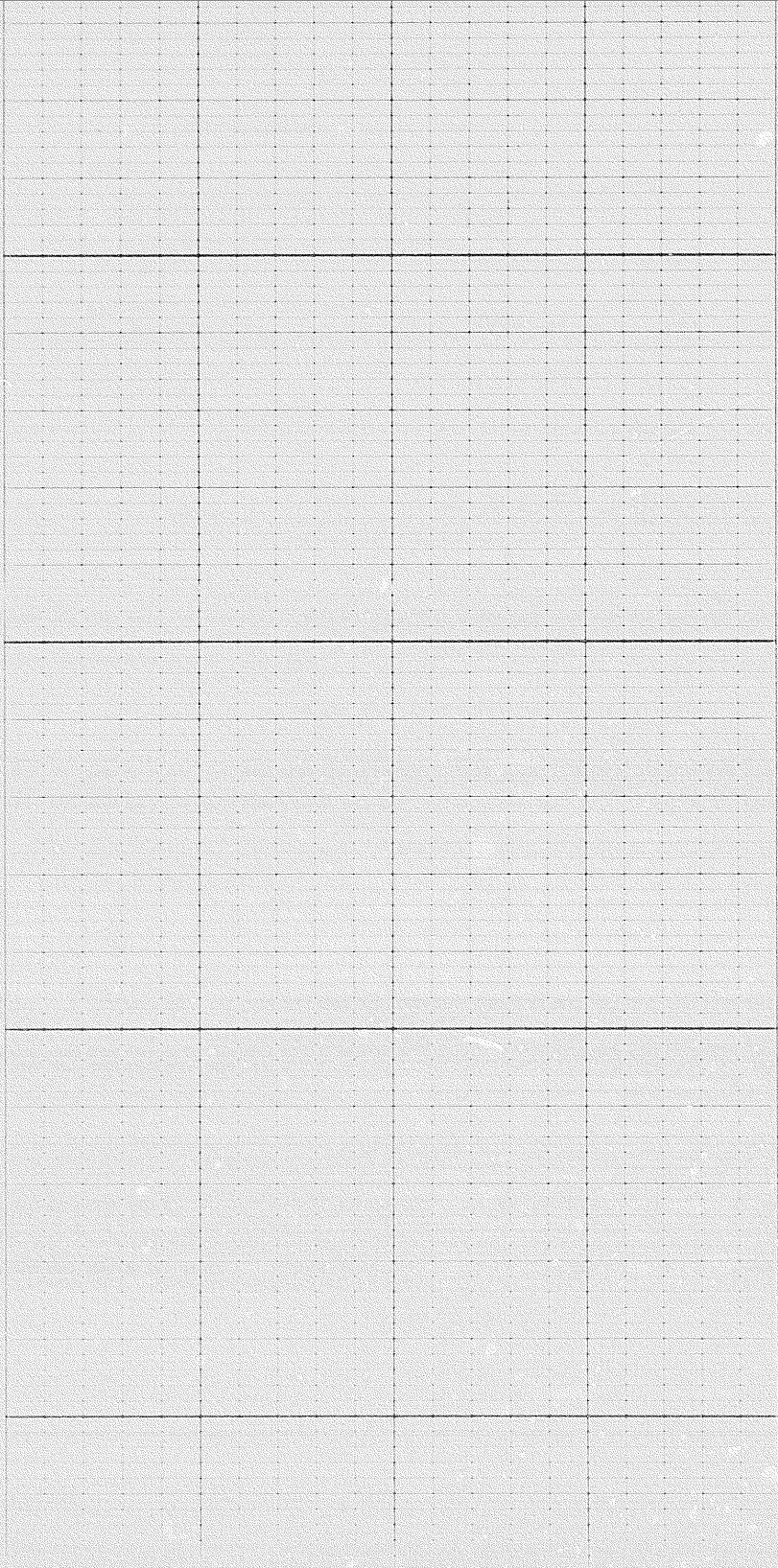


10 of

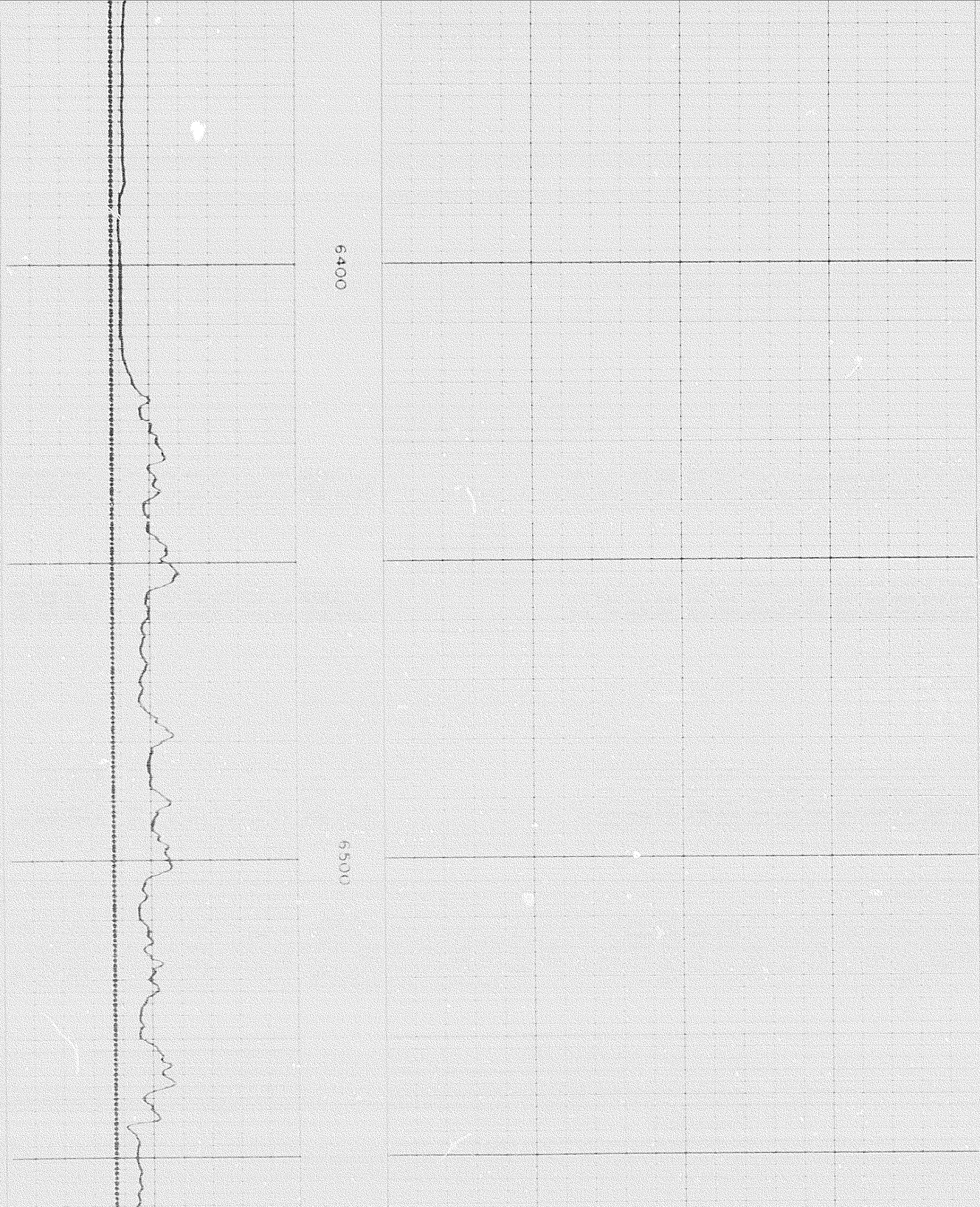


6200

6300



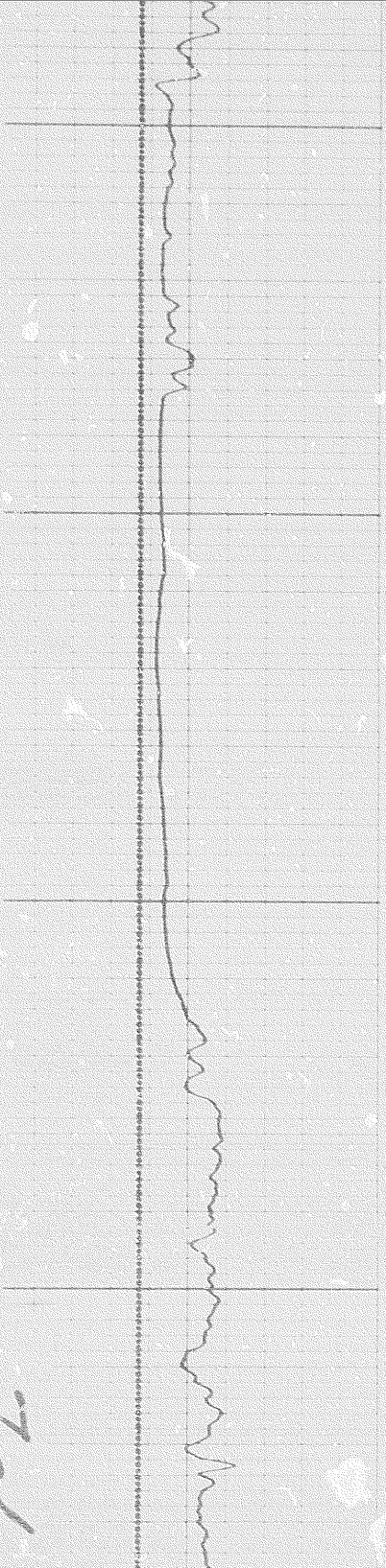




6400

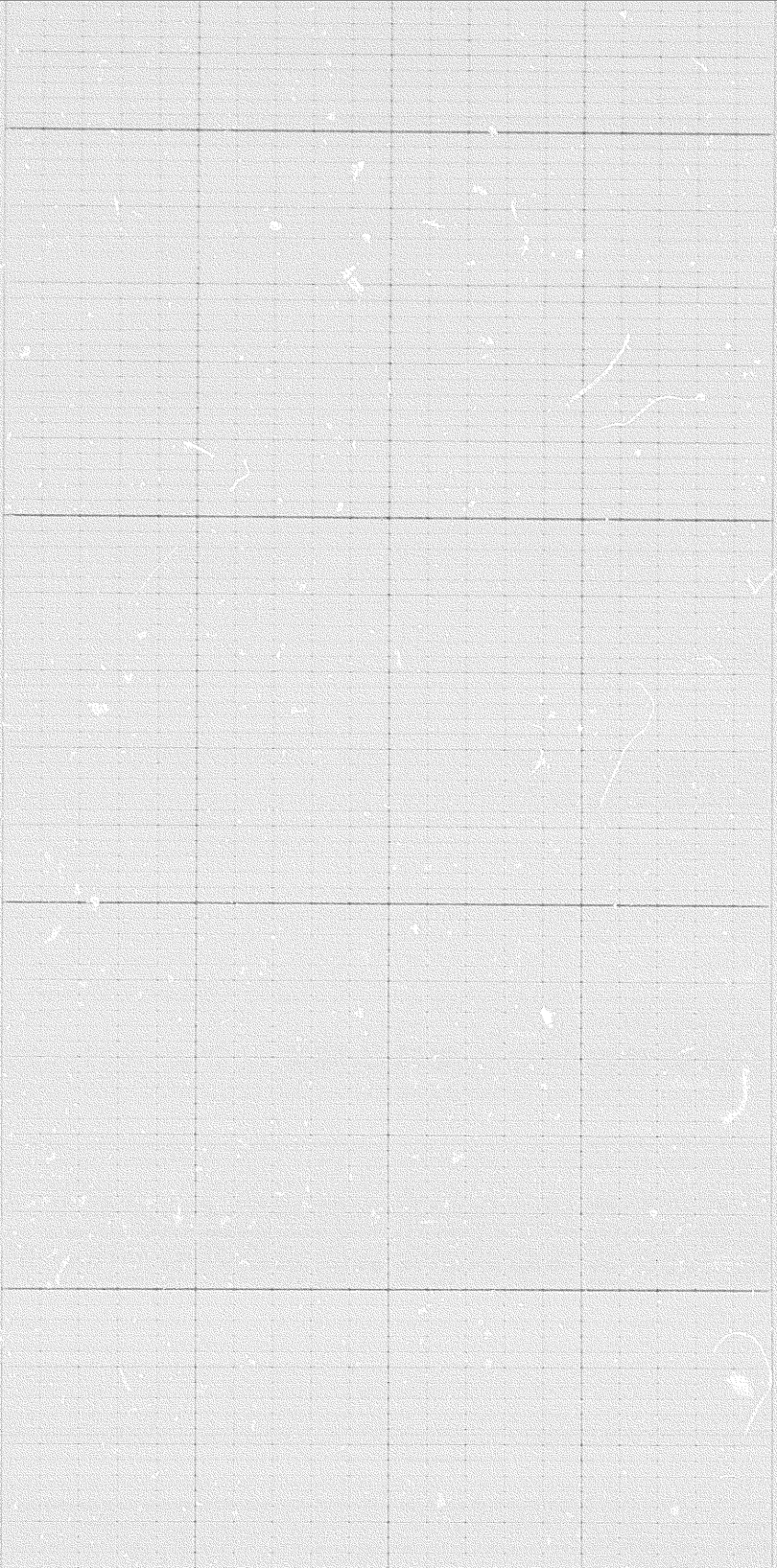
6500

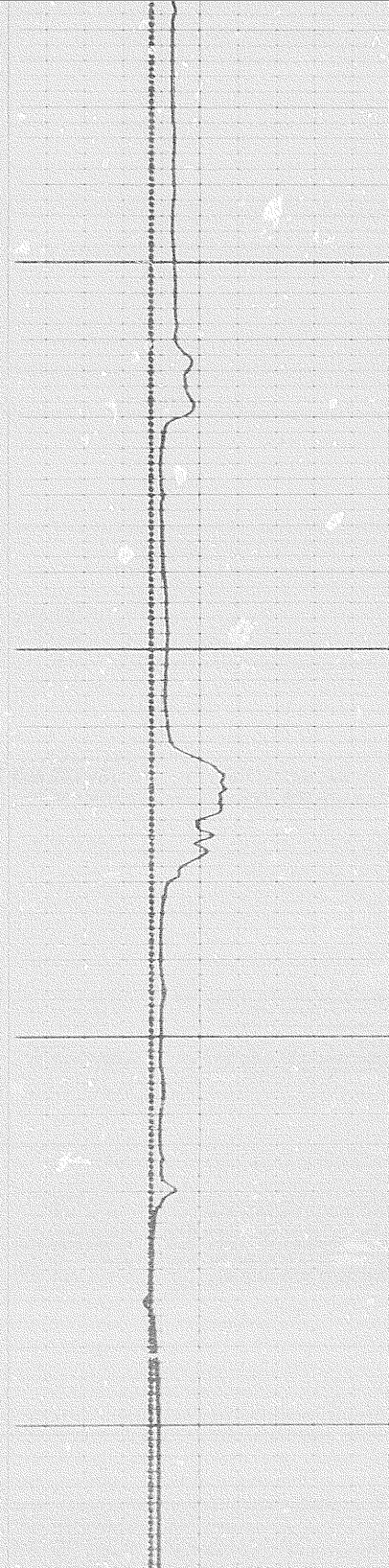
701



6700

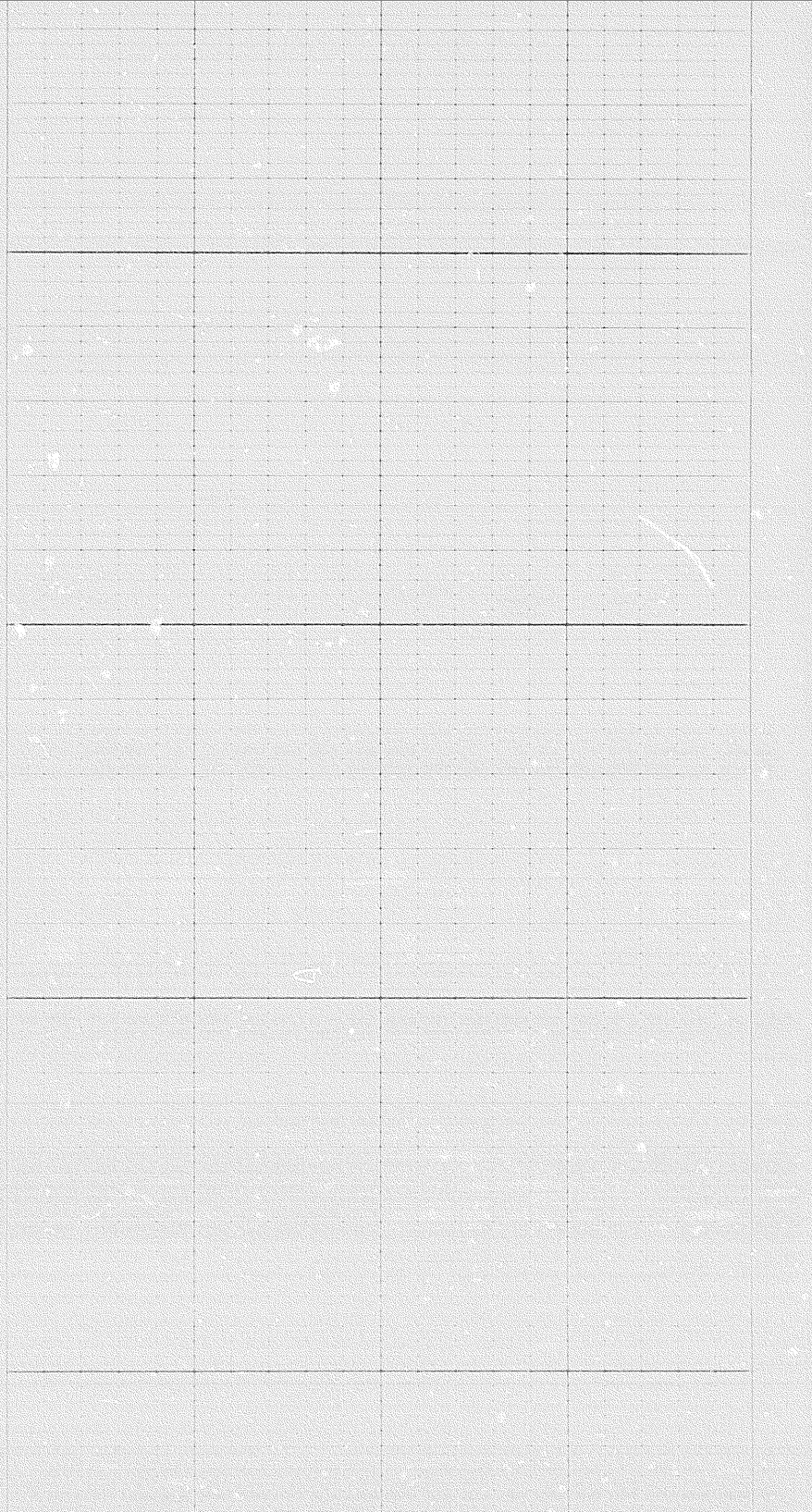
0099

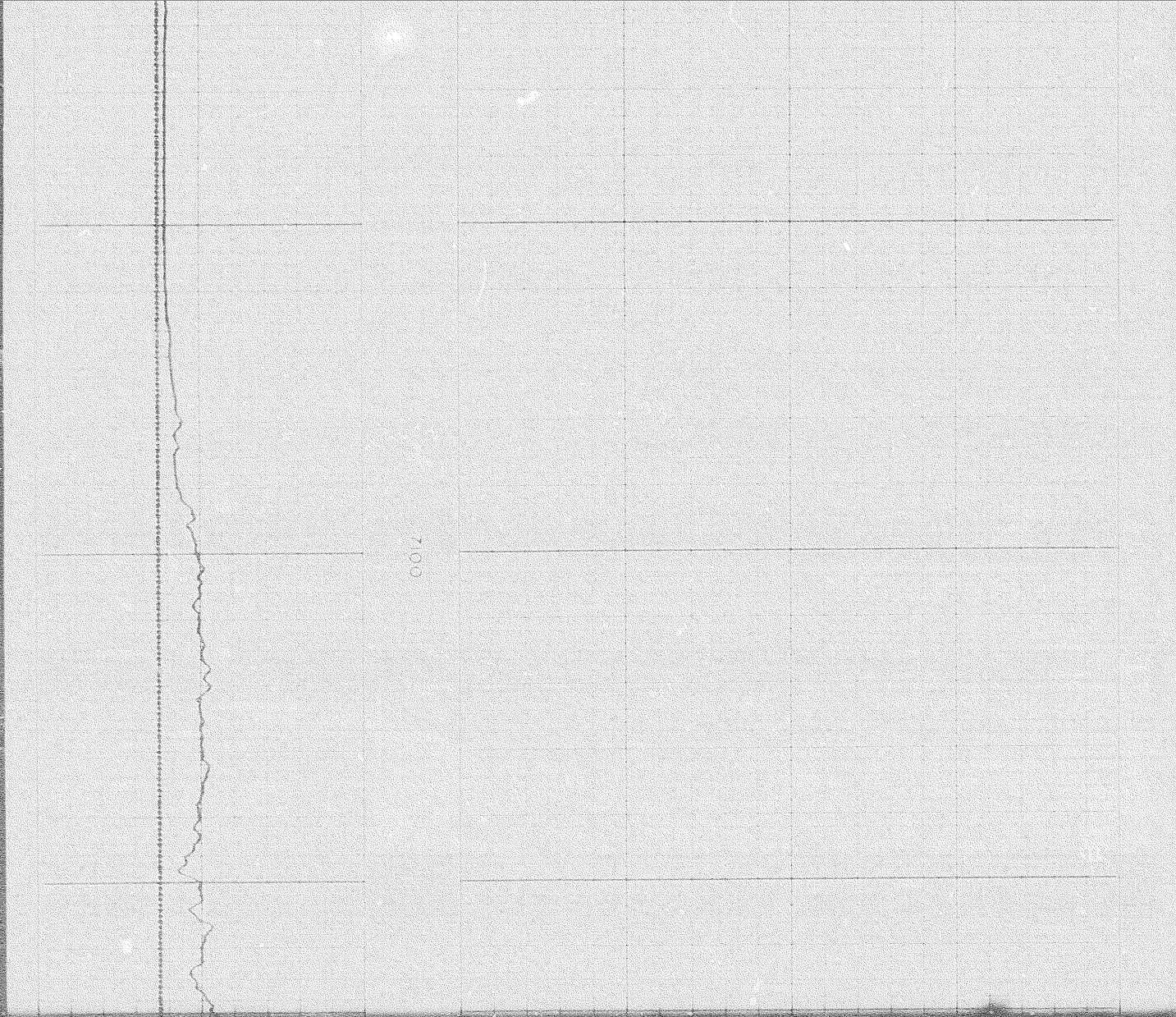




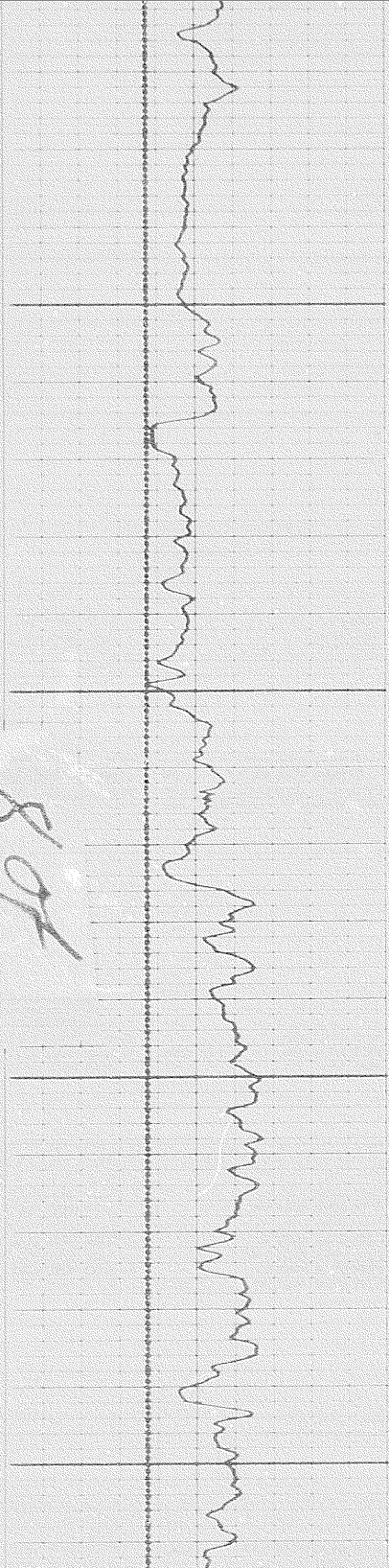
0069

0089



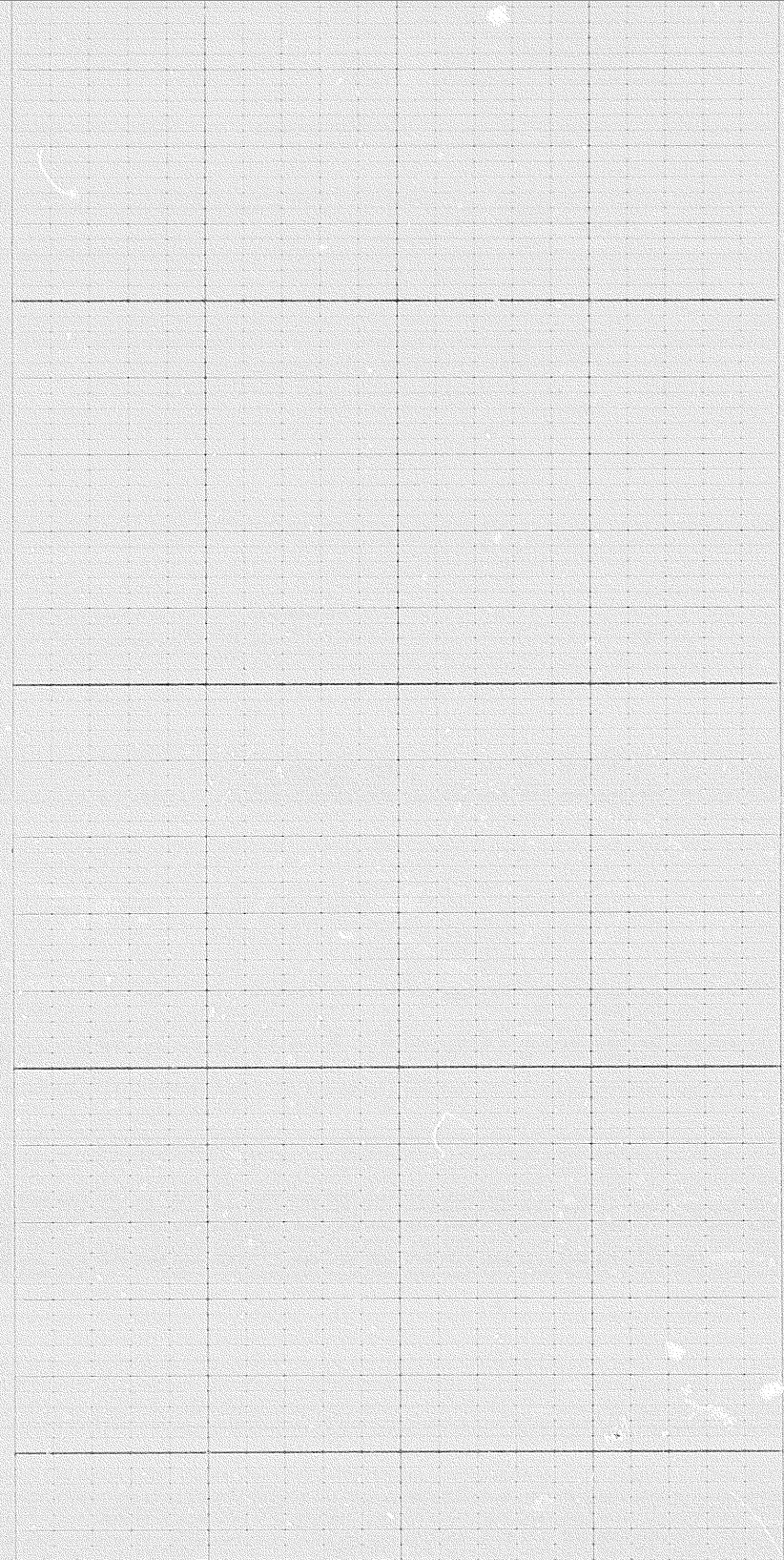


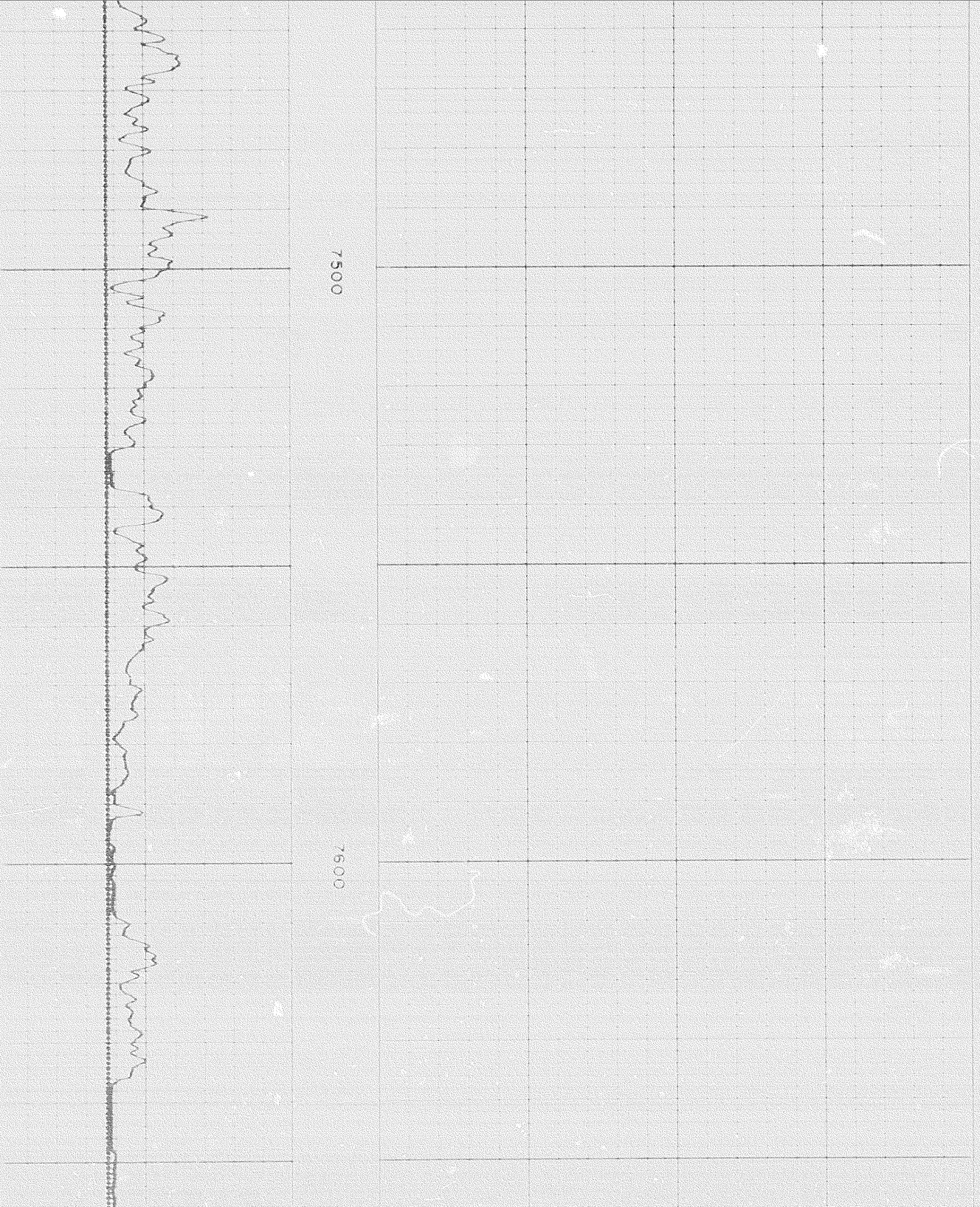
8 of



7300

7400





7500

7500

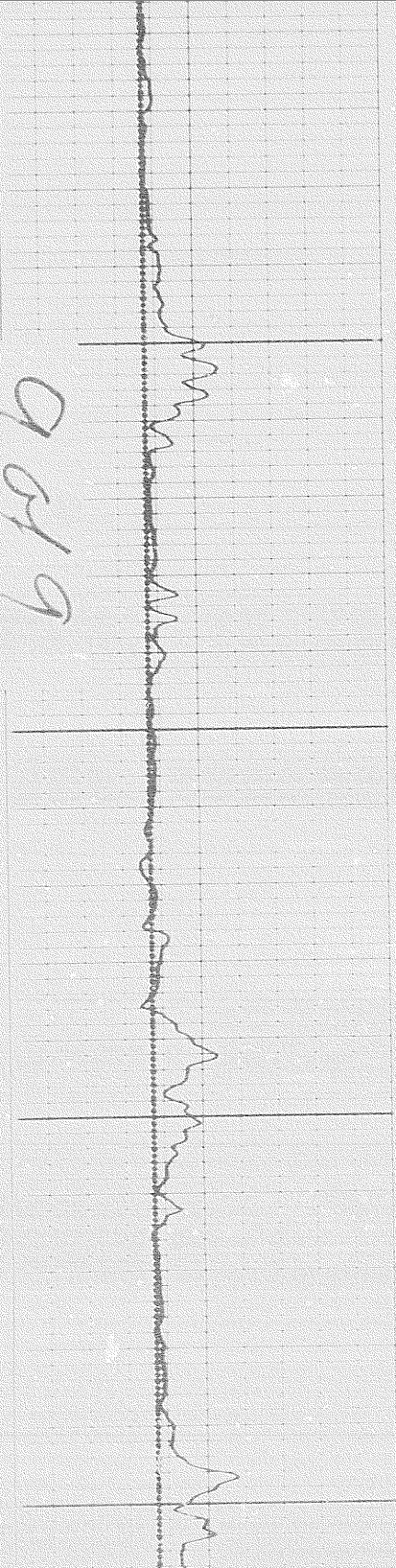
7700



7600

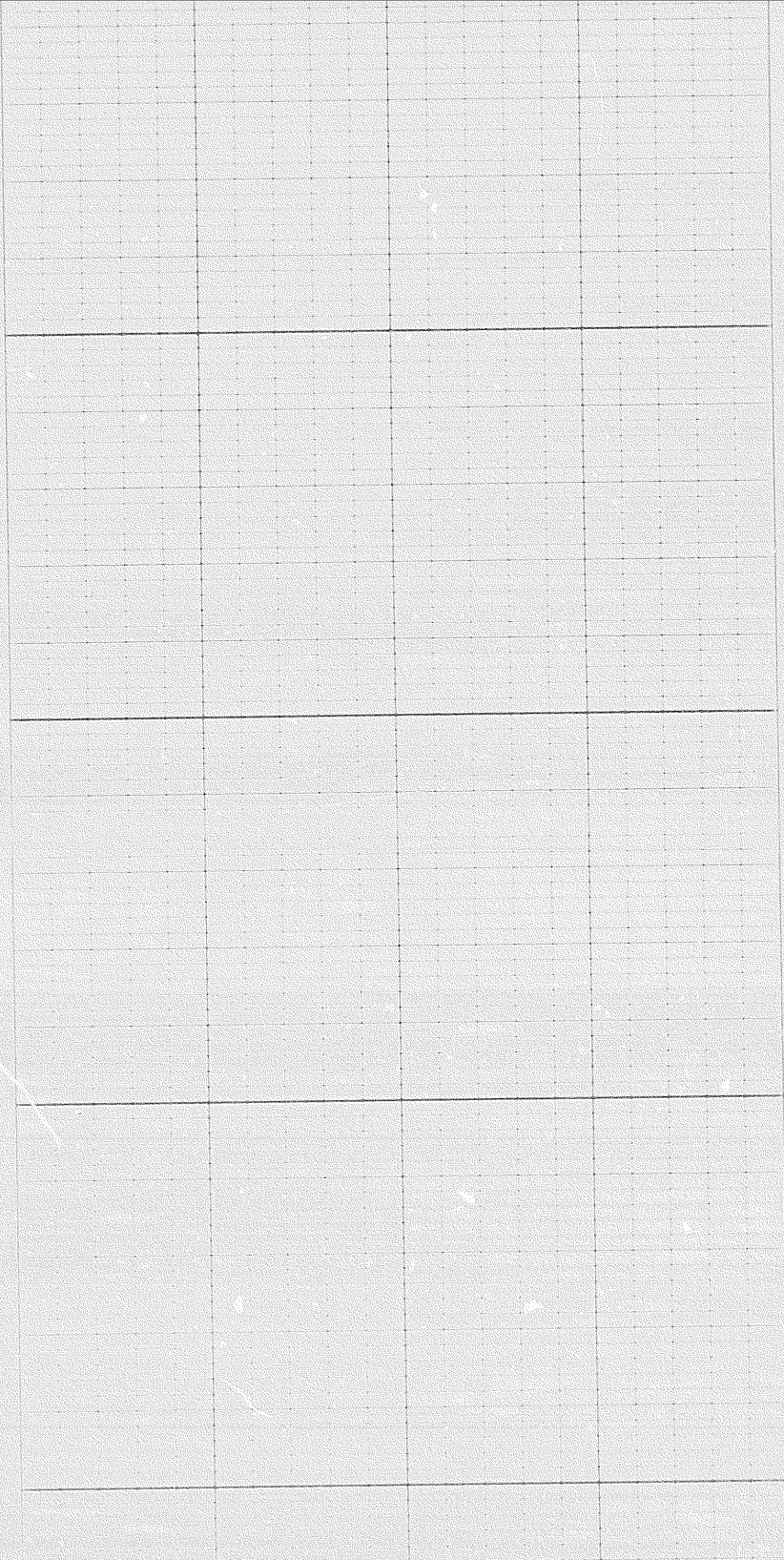


6606



7800

7900





WELL IN FEET

6 7 8 9 10 11 12 13 14

CALIPER  
hole diameter in inches

DEPTHS

FR

0000

COMPANY WESTERN MINERALS LTD.

WELL WESTERN MINERALS IN HOPE YT 1N53

