

JK

2100	3.6	N 65 W	6.28	2098.76	2.65	5.70	14.21
2200	3.8	N 69 W	6.63	2198.56	2.37	5.20	16.86
2300	3.7	N 69 W	6.45	2298.34	2.31	6.04	19.23
2400	2.4	N 72 W	4.19	2398.13	1.29	3.99	21.54
2500	1.7	N 70 W	2.96	2498.04	1.01	2.80	22.83
2600	1.3	N 66 W	2.27	2598.00	.92	2.08	23.84
2700	1.7	N 45 W	2.96	2697.97	2.09	2.11	24.76
2800	2.7	N 42 W	4.71	2797.93	3.50	3.16	26.85
2900	3.2	N 48 W	5.58	2897.82	3.73	4.16	30.35
3000	3.8	N 57 W	6.63	2997.66	3.61	5.57	34.08
3100	4.5	N 55 W	7.85	3097.44	4.50	6.44	37.69
3200	4.6	N 63 W	8.02	3197.13	3.64	7.16	42.19
3300	5.5	N 68 W	9.58	3296.81	3.59	8.90	45.83
3400	5.9	N 63 W	10.28	3396.35	4.66	9.17	49.42
3500	5.8	N 65 W	10.11	3495.82	4.27	9.17	54.08
3600	6.3	N 60 W	10.97	3595.30	5.48	9.51	58.35
3700	6.2	N 60 W	10.80	3694.70	5.40	9.37	63.83
3800	6.0	N 58 W	10.45	3794.11	5.54	8.87	69.23
3900	6.5	N 62 W	11.32	3893.56	5.31	10.01	74.77
4000	7.0	N 60 W	12.19	3992.92	6.09	10.56	80.08
4100	7.3	N 57 W	12.71	4092.17	6.92	10.67	86.17
4200	7.3	N 57 W	12.71	4191.36	6.92	10.67	93.09
4300	7.3	N 56 W	12.71	4290.55	7.10	10.55	100.01
4400	7.0	N 55 W	12.19	4389.73	6.99	9.99	107.11
4500	6.9	N 52 W	12.01	4488.99	7.39	9.48	114.10
4600	6.6	N 57 W	11.49	4588.26	6.26	9.65	121.49
4700	6.6	N 55 W	11.49	4687.60	6.59	9.42	127.75
4800	6.6	N 55 W	11.49	4786.94	6.59	9.42	134.34
4900	7.2	N 54 W	12.53	4886.27	7.36	9.15	140.93
5000	8.0	N 54 W	13.92	4985.48	8.18	11.27	148.29

5700				5680.22		195.11	327.55
	5.8	N 85 W	10.11		4.27	9.17	
5800				5779.70		197.38	336.70
	6.5	N 68 W	11.32		4.24	10.51	
5900				5879.06		201.61	347.21
	7.0	N 70 W	12.19		4.16	11.46	
6000				5978.31		205.77	358.67
	7.5	N 65 W	13.05		5.51	11.84	
6100				6077.46		211.29	370.51
	6.7	N 71 W	11.67		3.80	11.04	
6200				6176.77		215.09	381.55
	5.5	N 70 W	9.58		3.28	9.02	
6300				6276.31		218.37	390.57
	5.0	N 65 W	8.71		3.68	7.91	
6400				6375.95		222.05	398.48
	4.5	N 60 W	7.85		3.92	6.81	
6500				6475.62		225.97	405.29
	3.7	N 65 W	6.45		2.95	5.76	
6600				6575.41		228.90	411.05
	3.2	N 60 W	5.58		2.79	4.85	
6700				6675.26		231.69	415.90
	3.0	N 65 W	5.23		2.38	4.67	
6800				6775.12		234.07	420.57
	2.6	N 67 W	4.54		1.77	4.19	
6900				6875.01		235.84	424.77
	2.3	N 75 W	4.01		1.04	3.89	
7000				6974.93		236.88	428.66
	1.8	N 70 W	3.14		1.07	2.96	
7100				7074.88		237.95	431.62
	1.5	N 70 W	2.62		.89	2.47	
7200				7174.85		238.84	434.09
	1.3	N 74 W	2.27		.63	2.19	
7300				7274.82		239.46	436.28
	1.1	N 77 W	1.92		.43	1.88	
7400				7374.80		239.89	438.16
	1.1	N 78 W	1.92		.40	1.89	
7500				7474.78		240.29	440.05
	1.1	N 77 W	1.92		.43	1.88	
7600				7574.76		240.72	441.93
	1.0	N 80 W	1.74		.30	1.73	
7700				7674.74		241.02	443.66
						2.56	

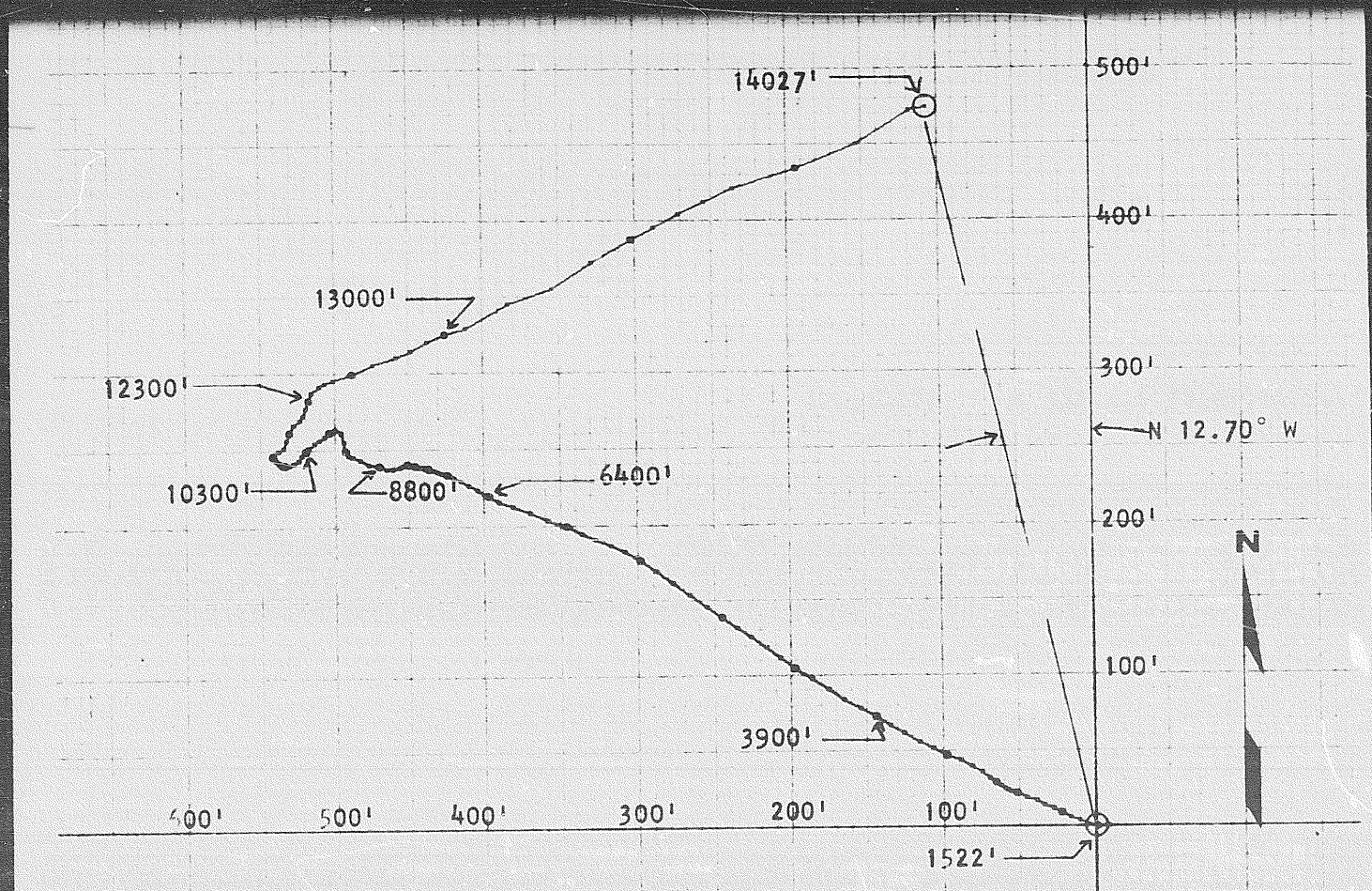
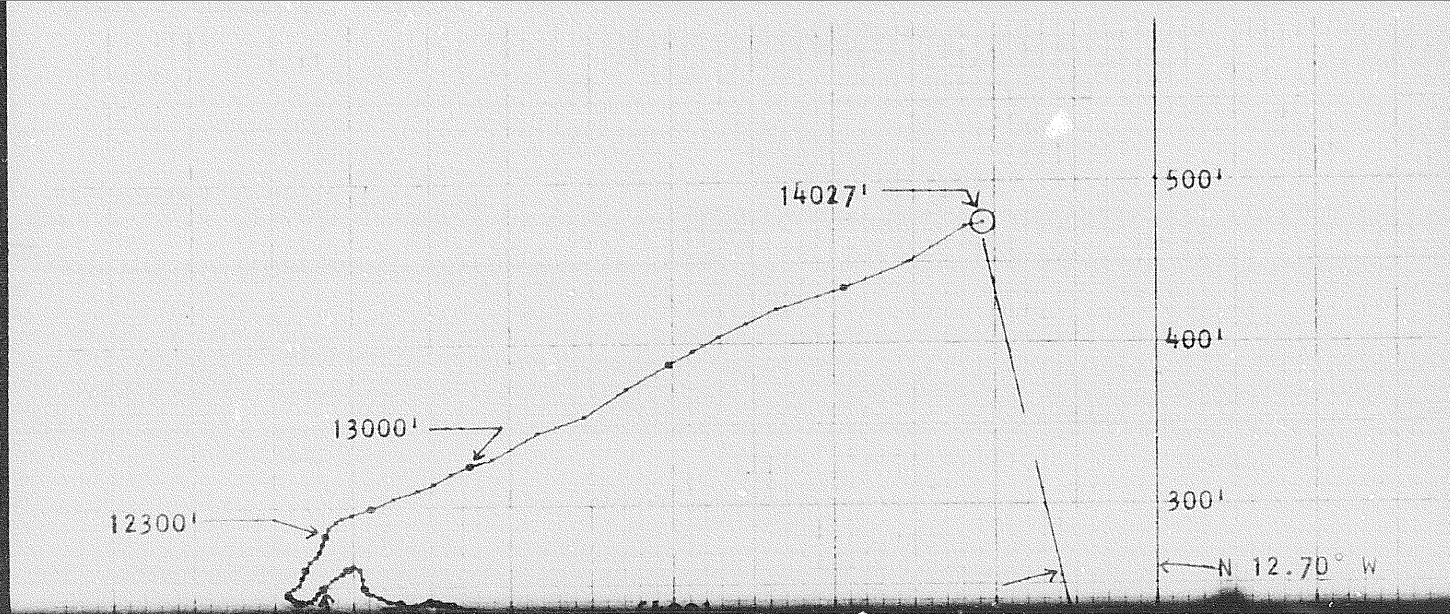
6900				6875.01		235.84	424.77
	2.3	N 75 W	4.01		1.04	3.89	
7000				6974.93		236.88	428.66
	1.8	N 70 W	3.14		1.07	2.96	
7100				7074.88		237.95	431.62
	1.5	N 70 W	2.62		.89	2.47	
7200				7174.85		238.84	434.09
	1.3	N 74 W	2.27		.63	2.19	
7300				7274.82		239.46	436.28
	1.1	N 77 W	1.92		.43	1.88	
7400				7374.80		239.89	438.16
	1.1	N 78 W	1.92		.40	1.89	
7500				7474.78		240.29	440.05
	1.1	N 77 W	1.92		.43	1.88	
7600				7574.76		240.72	441.93

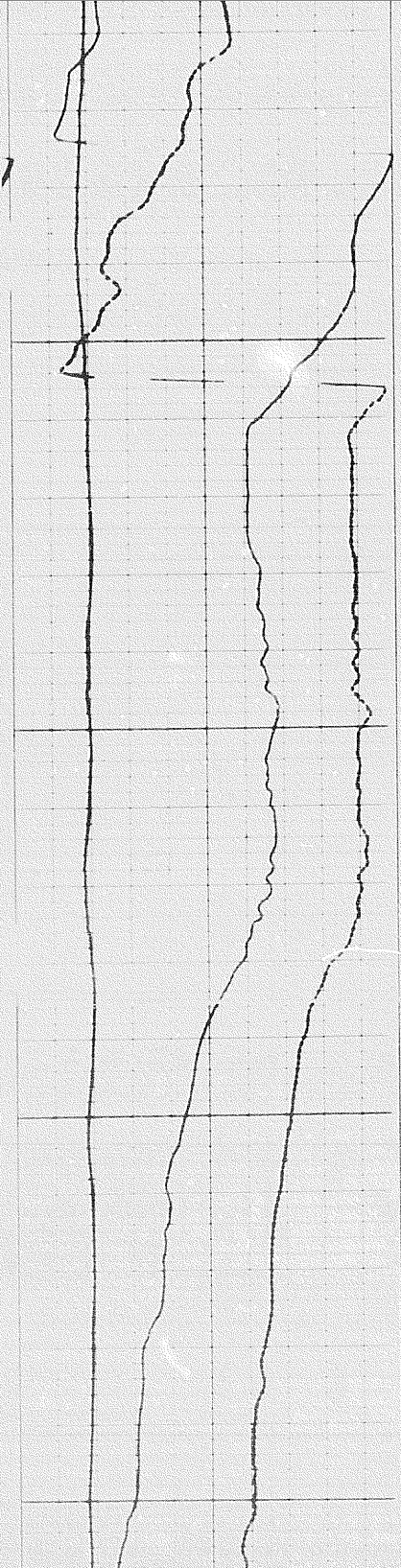
202

8049	.9	N 81 W	.77	8023.70	.12	.77	242.43	448.98
	.8	N 73 W	.71		.21	.69		
8100				8074.69			242.64	449.67
	.7	N 80 W	1.22		.21	1.21		
8200				8174.68			242.86	450.88
	.9	WEST	1.57		.00	1.58		
8300				8274.67			242.86	452.46
	1.3	S 68 W	2.27		.86	2.12		
8400				8374.64			242.00	454.58
	1.7	S 75 W	2.96		.78	2.88		
8500				8474.60			241.21	457.46
	2.5	S 80 W	4.36		.77	4.31		
8600				8574.50			240.45	461.77
	2.5	S 87 W	4.36		.24	4.37		
8700				8674.40			240.21	466.14
	3.3	N 68 W	5.76		2.15	5.35		
8800				8774.24			242.36	471.49
	4.0	N 82 W	6.97		.97	6.92		
8900				8873.99			243.32	478.41
	3.5	N 65 W	6.10		2.58	5.55		
9000				8973.81			245.90	483.96
	2.9	N 71 W	5.06		1.64	4.80		
9100				9073.68			247.54	488.76
	2.3	N 61 W	4.01		1.94	3.52		
9200				9173.60			249.48	492.28
	2.0	N 33 W	3.49		2.92	1.91		
9300				9273.53			252.41	494.19
	3.2	N 5 W	5.58		5.56	.50		
9400				9373.38			257.96	494.69
	3.5	N 20 W	6.10		5.73	2.10		
9500				9473.19			263.70	496.79
	2.6	N 58 W	4.54		2.40	3.86		
9600				9573.09			266.09	500.65
	1.3	S 70 W	2.27		.79	2.14		
9700				9673.06			265.30	502.79
	1.7	S 55 W	2.96		1.71	2.44		
9800				9773.01			263.59	505.23
	2.2	S 57 W	3.84		2.10	3.23		
9900				9872.94			261.49	508.46
	2.4	S 50 W	4.19		2.71	3.22		
10000				9972.85			258.78	511.68
	2.3	S 58 W	4.01		2.14	3.41		
10100				10072.77			256.64	515.09
	2.5	S 53 W	4.36		2.63	3.49		
10200				10172.67			254.01	518.58
	2.1	S 47 W	3.66		2.51	2.69		
10300				10272.61			251.50	521.27
	2.2	S 43 W	3.84		2.82	2.63		
10400				10372.53			248.68	523.90
	2.0	S 46 W	3.49		2.44	2.52		
10500				10472.47			246.24	526.42
	2.1	S 54 W	3.66		2.17	2.97		
10600				10572.40			244.07	529.39
	1.7	S 72 W	2.96		.93	2.83		
10700				10672.36			243.14	532.22
	1.4	S 81 W	2.44		.39	2.42		
10800				10772.32			242.75	534.64
	1.1	S 77 W	1.92		.44	1.88		
10900				10872.30			242.30	536.52

11800	3.4	N 19 E	5.93	11771.67	5.61	5.93	266.34	532.49
11900	3.5	N 33 E	6.10	11871.48	5.12	3.32	271.46	529.17
12000	3.0	N 47 E	5.23	11971.34	3.57	3.82	275.03	525.35
12100	2.5	N 39 E	4.36	12071.24	3.39	2.74	278.42	522.61
12200	2.8	N 24 E	4.88	12171.12	4.46	1.98	282.88	520.63
12300	3.0	N 19 E	5.23	12270.98	4.95	1.70	287.83	518.93
12400	3.1	N 26 E	5.41	12370.84	4.86	2.37	292.69	516.56
12500	3.6	N 52 E	6.28	12470.64	3.86	4.95	296.55	511.61
12550	5.3	N 58 E	4.62	12520.42	2.45	3.91	299.00	507.70
12600	6.7	N 65 E	5.83	12570.08	2.46	5.29	301.46	502.41
12700	8.2	N 74 E	14.26	12669.06	3.93	13.71	305.39	488.70
12800	8.5	N 69 E	14.78	12767.96	5.29	13.80	310.68	474.90
12900	9.6	N 72 E	16.68	12866.56	5.15	15.86	315.53	459.04
12950	12.6	N 67 E	10.91	12915.55	4.26	10.04	320.09	449.00
13000	13.8	N 63 E	11.95	12963.91	5.41	10.63	325.50	438.38
13050	15.7	N 68 E	13.53	13012.04	5.07	12.54	330.57	429.84
13100	17.4	N 71 E	14.95	13059.75	4.87	14.13	335.44	411.71
13200	18.5	N 60 E	31.73	13154.58	15.86	27.48	351.30	384.23
13300	17.8	N 71 E	30.57	13249.80	9.95	28.90	361.25	355.33
13400	18.0	N 57 E	30.90	13344.90	16.83	25.91	378.08	329.42
13500	17.6	N 60 E	30.24	13440.22	15.12	26.18	393.20	303.24
13550	19.5	N 63 E	16.69	13487.55	7.57	14.87	400.77	288.37
13600	21.4	N 61 E	18.24	13535.76	8.84	15.95	409.61	272.42
13650	22.7	N 65 E	19.29	13580.03	8.15	17.48	417.76	254.94
13700	24.3	N 64 E	20.57	13625.60	9.02	18.49	426.78	236.45
13800	26.1	N 73 E	43.99	13715.40	12.86	42.07	439.64	194.38
13900	25.6	N 68 E	43.21	13805.58	16.18	40.06	455.82	154.30
14000	24.5	N 58 E	41.47	13896.58	21.97	35.16	477.79	119.16
14027	24.5	N 79 E	11.20	13921.15	2.13	10.99	479.91	108.17

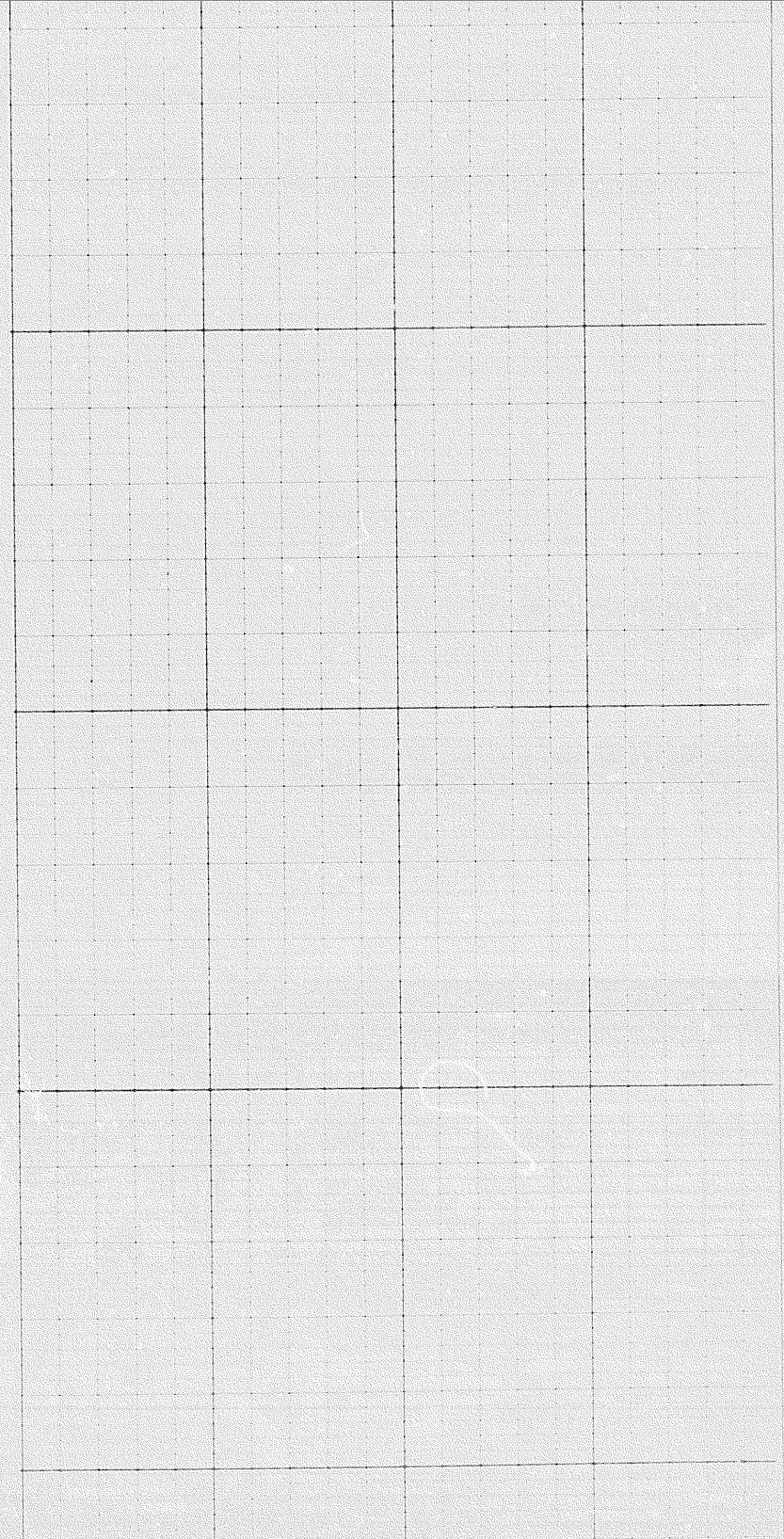
506.35 26.44 435.29 543.46





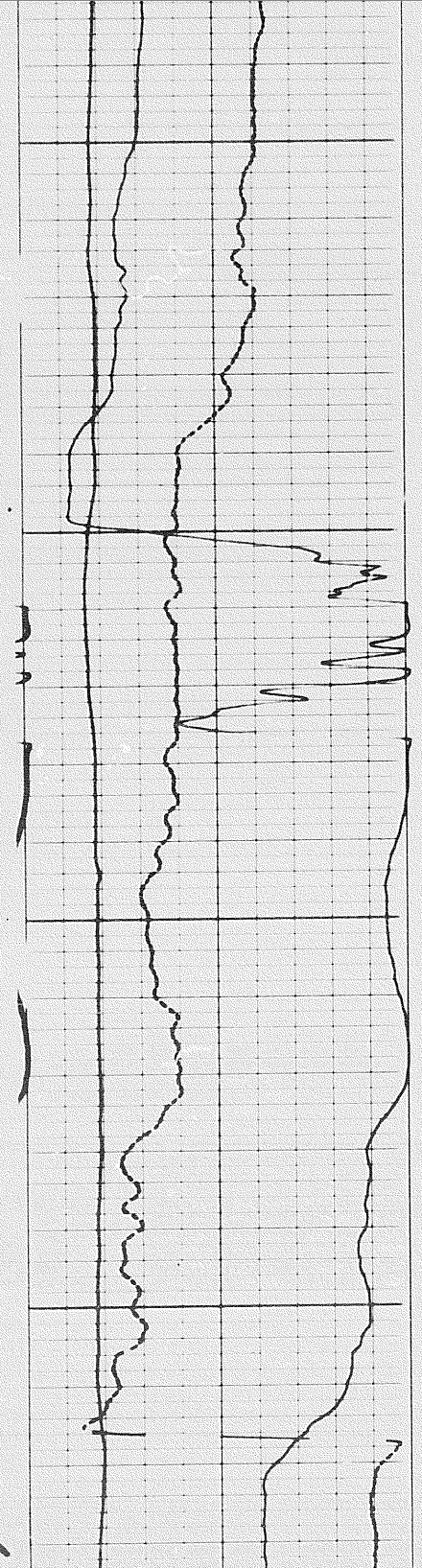
7900

8000



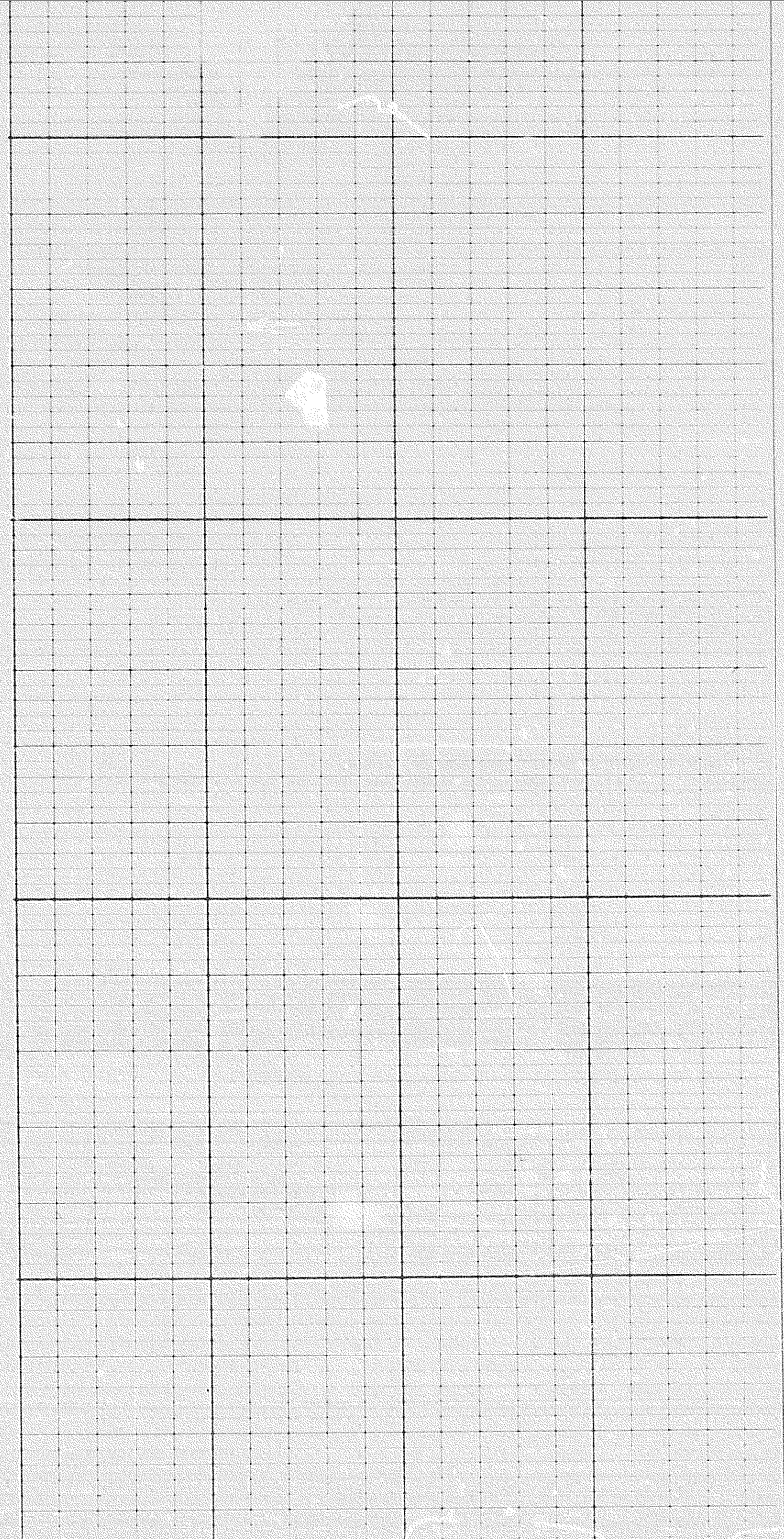
2

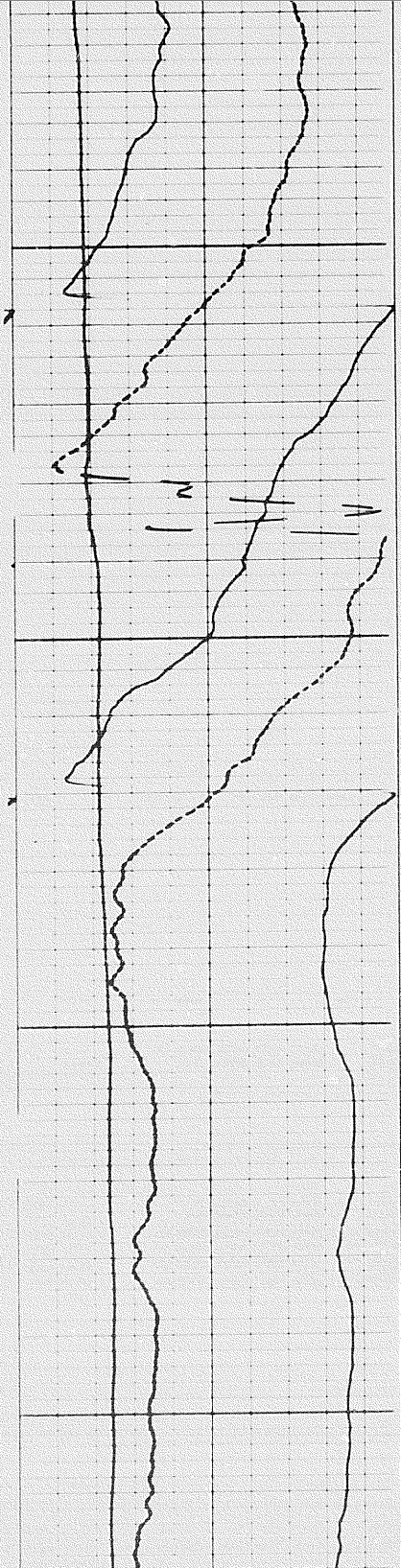
4 of 7



8000

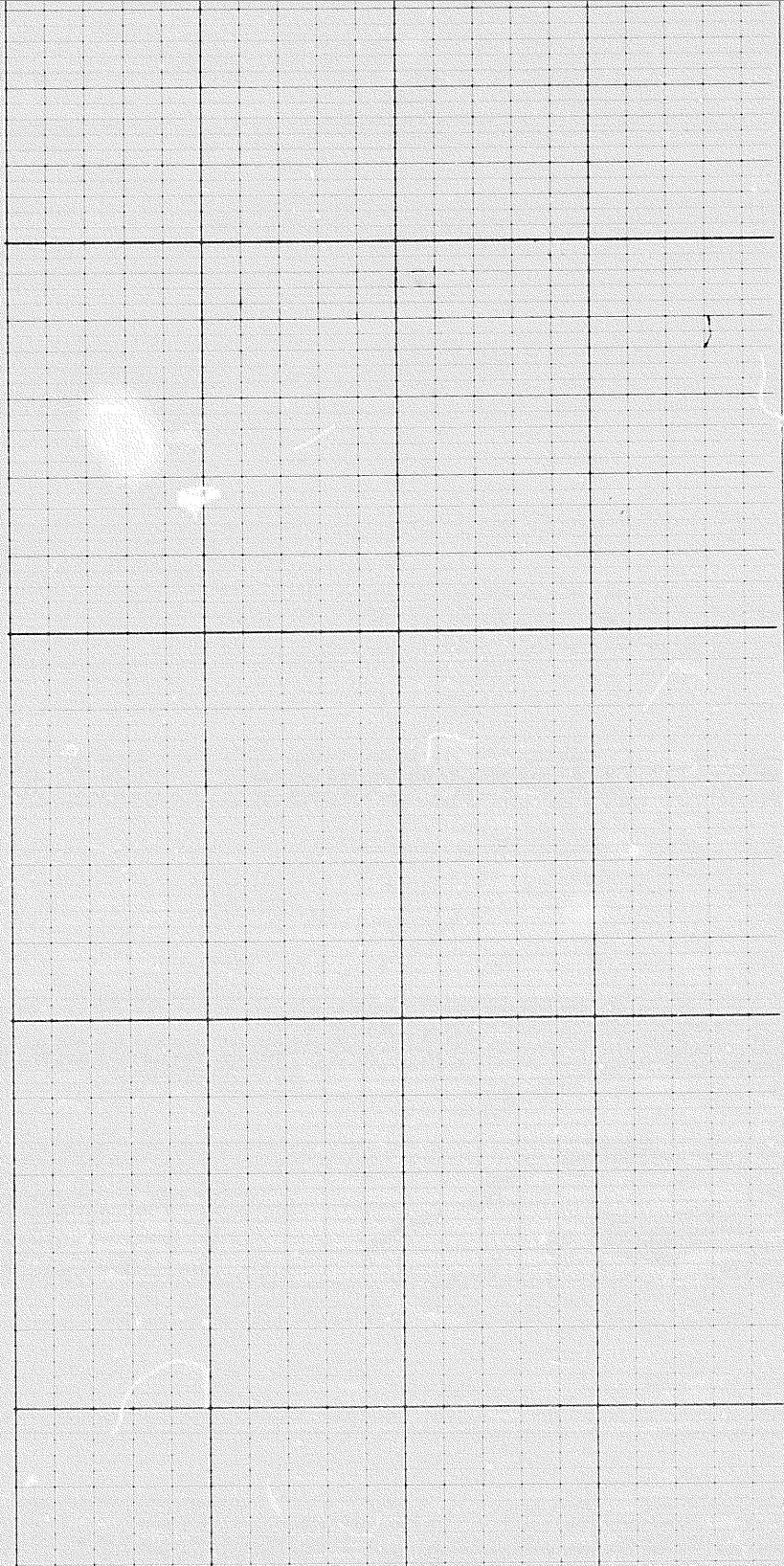
8000

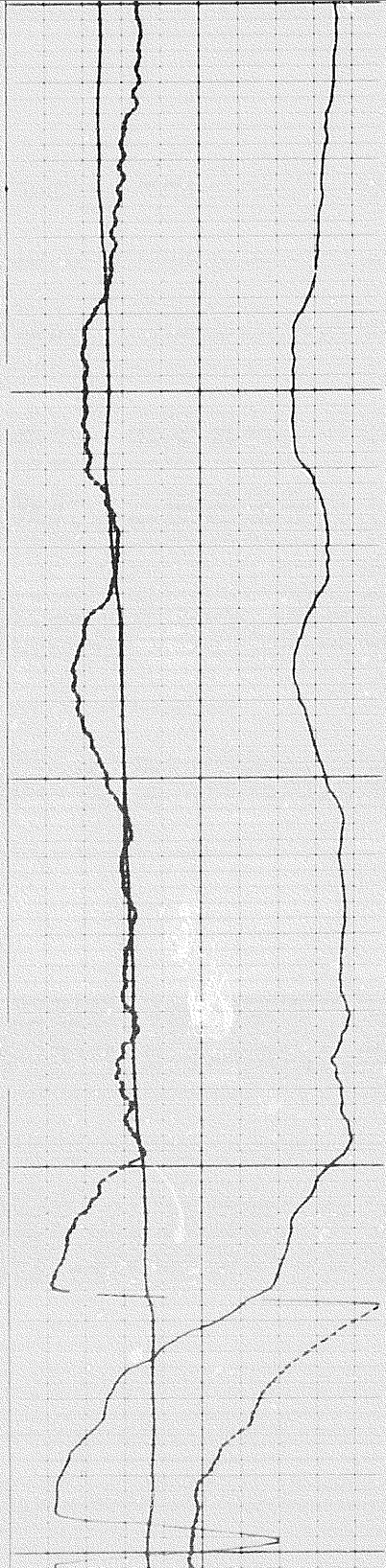




8300

8400





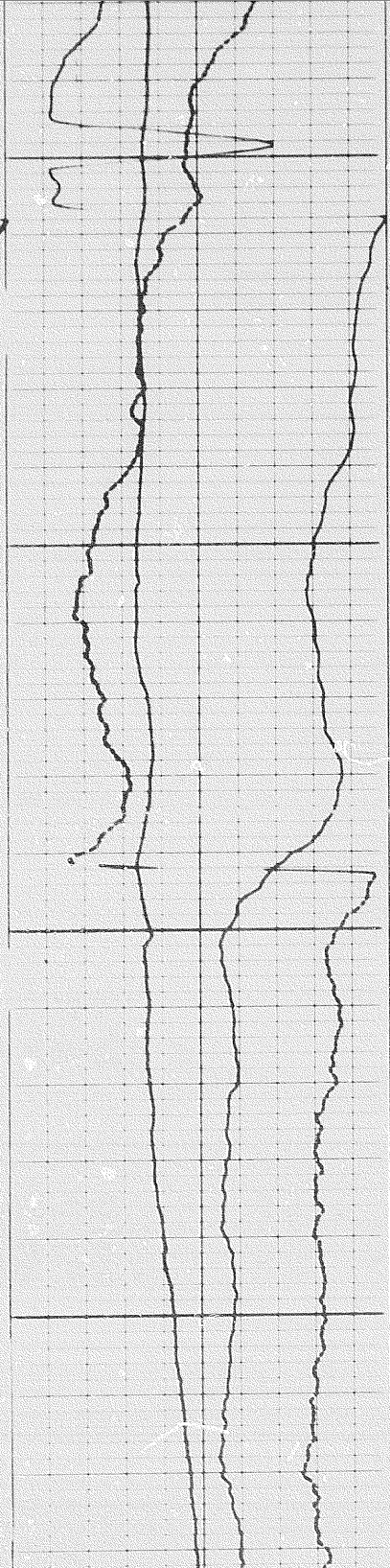
098

8500

00

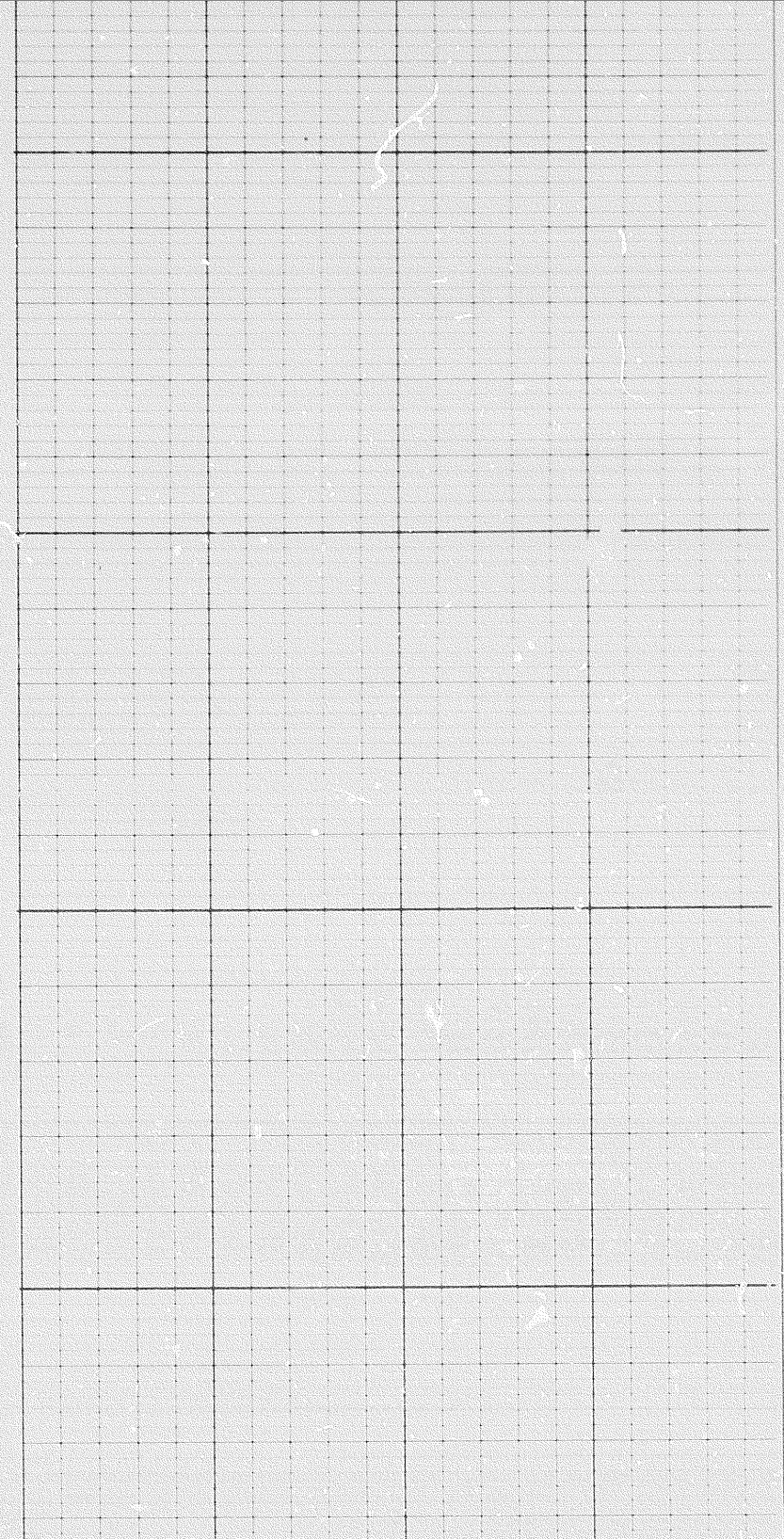


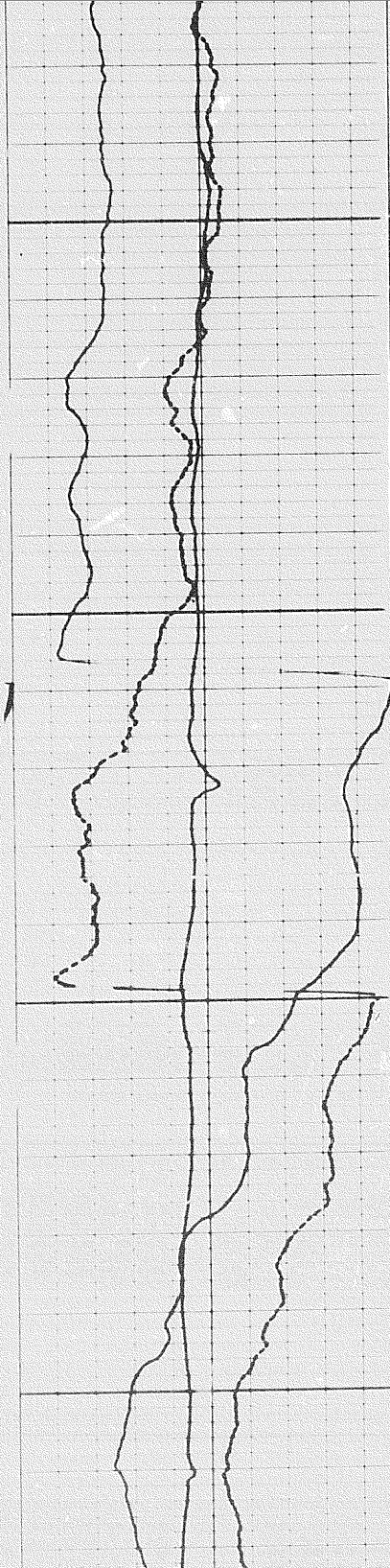
5 of



8700

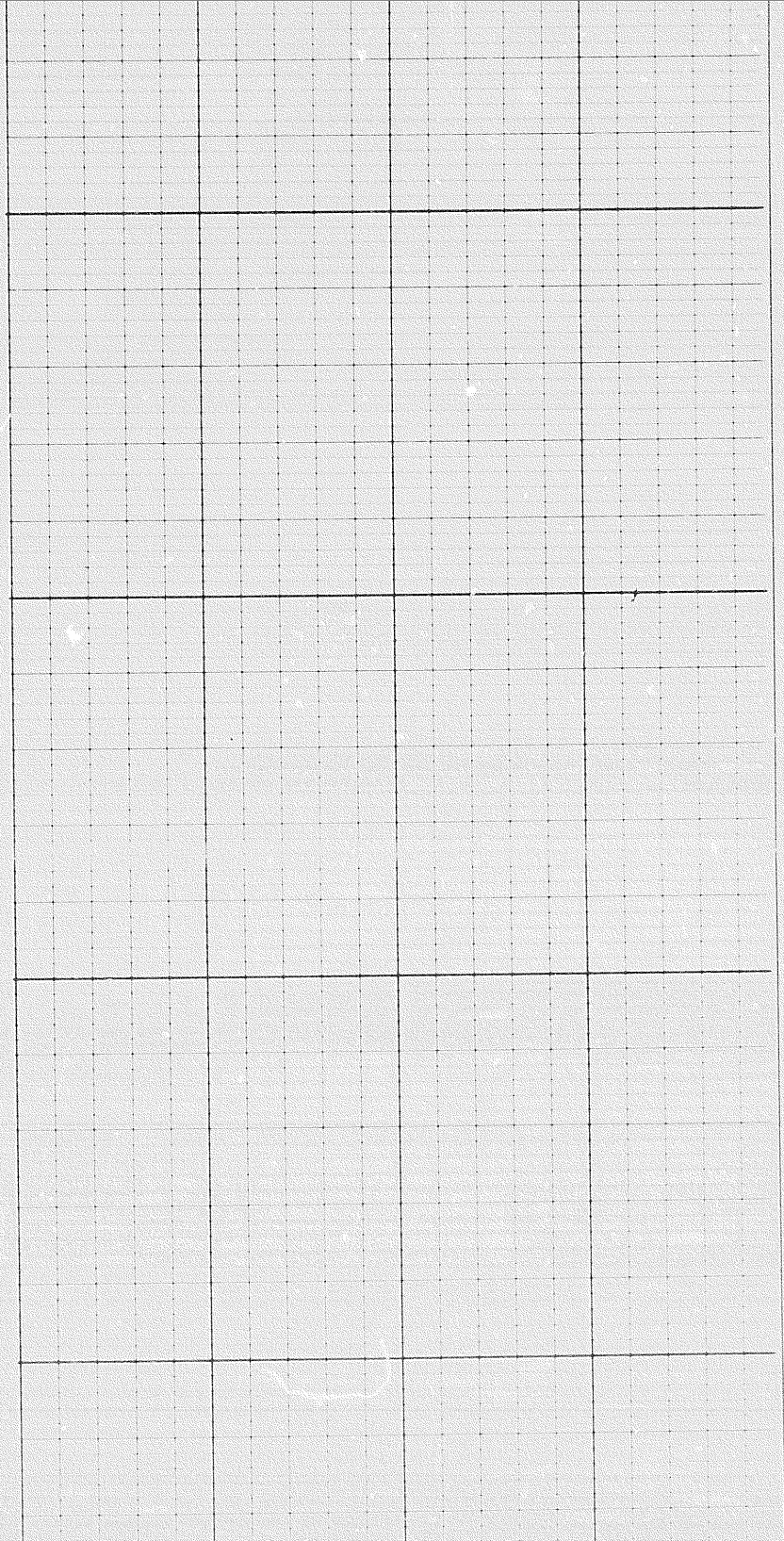
0098

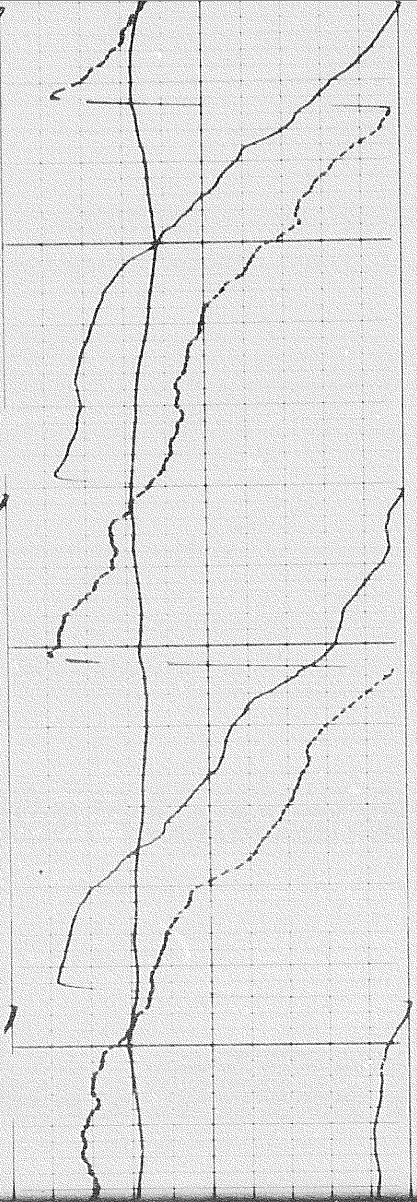




0005

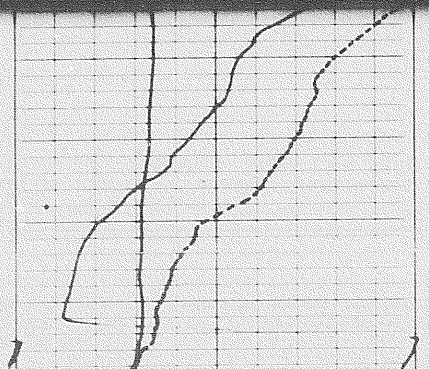
0068





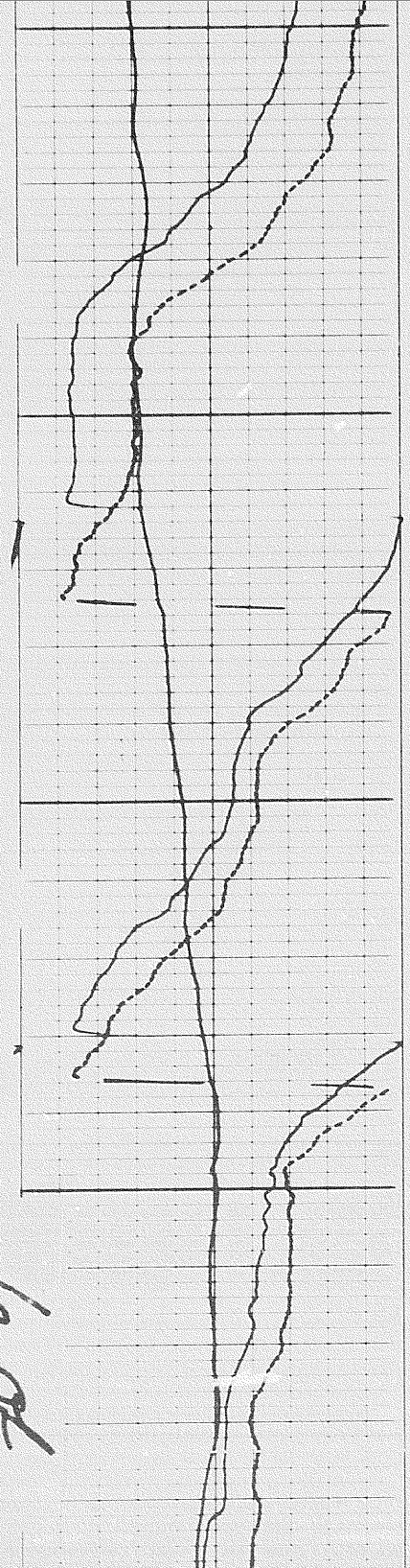
3200

3000



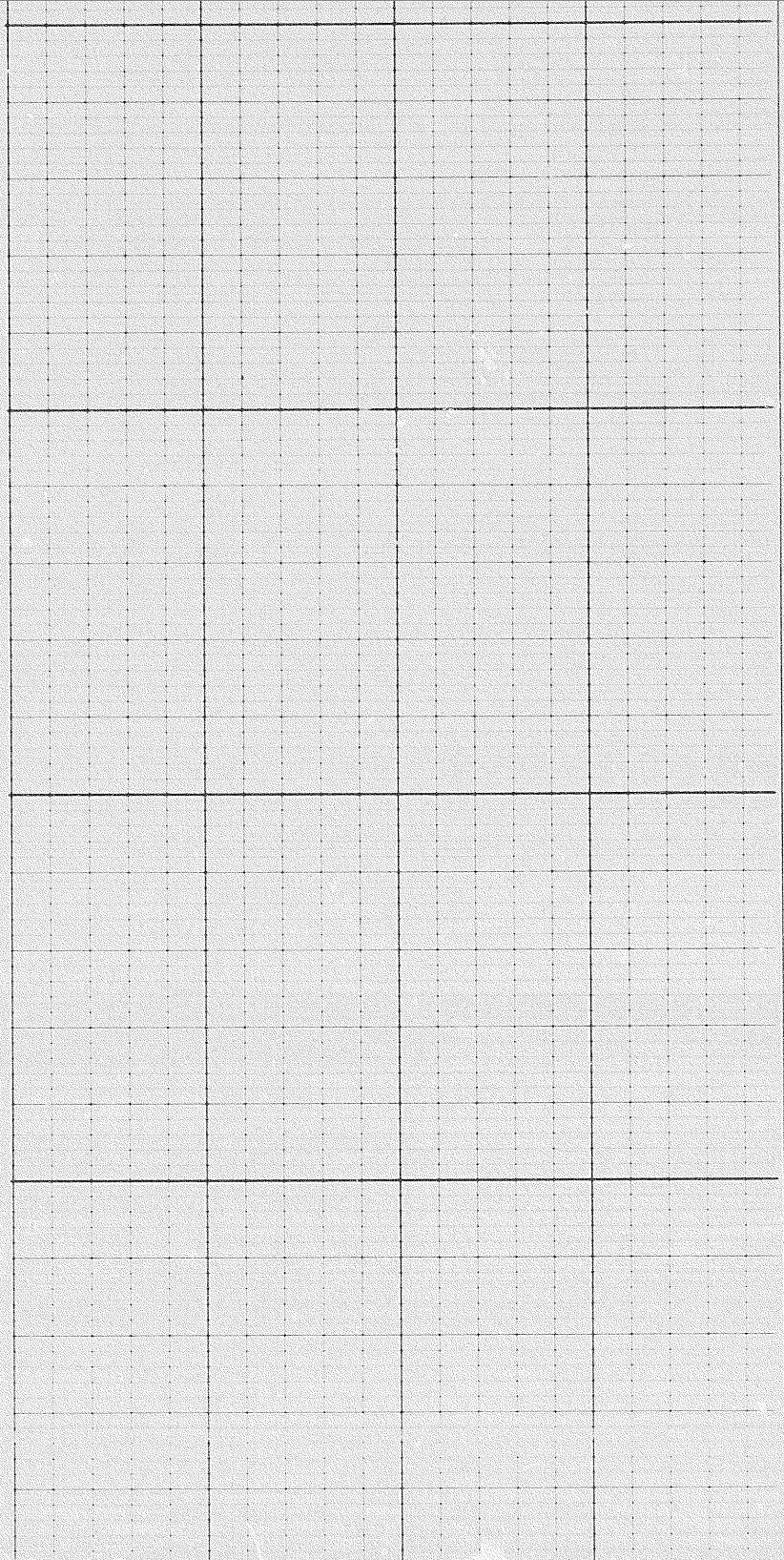
9

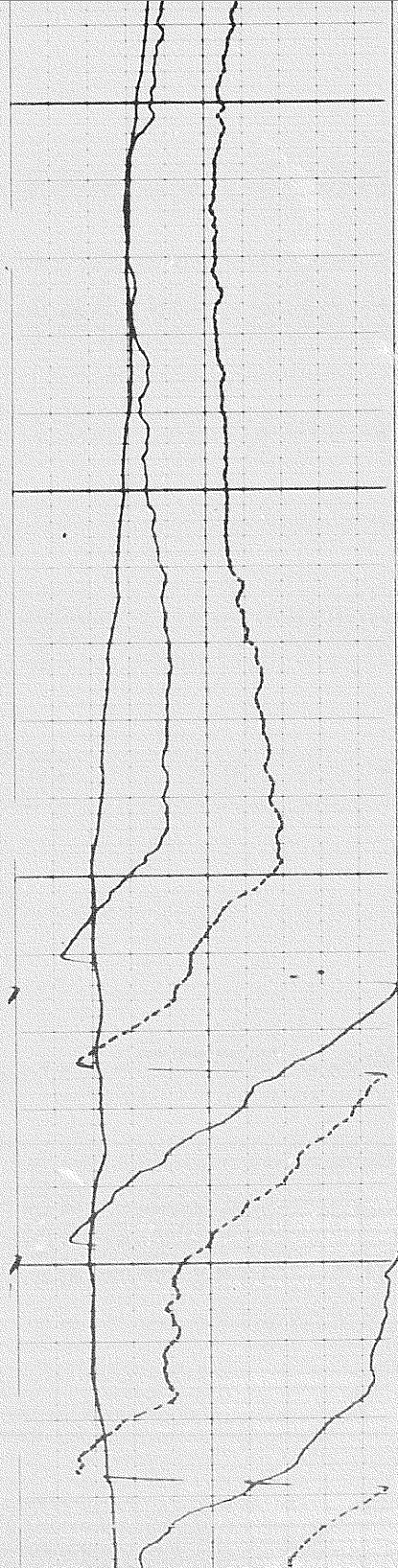
6 of 9



9300

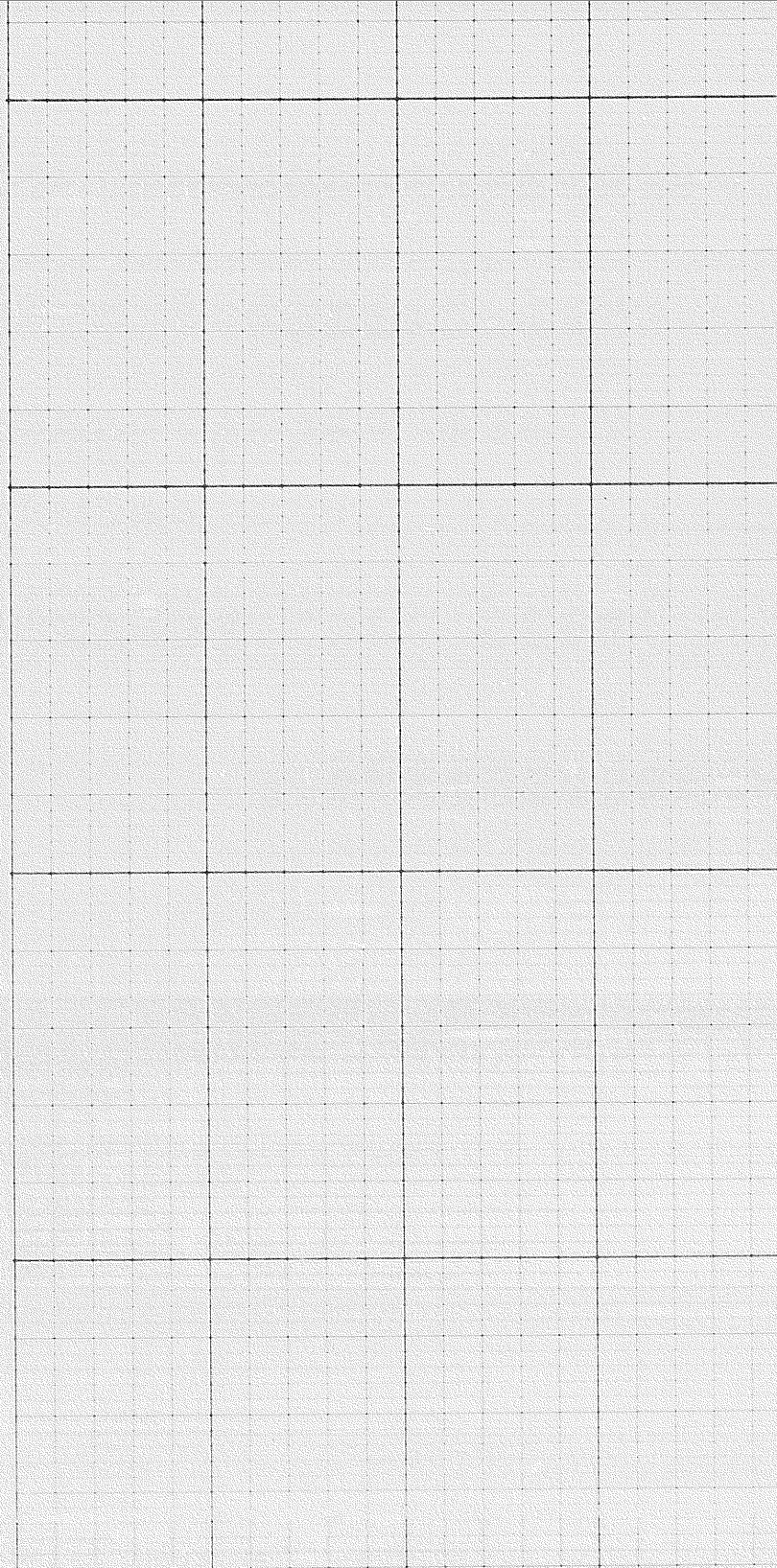
9400

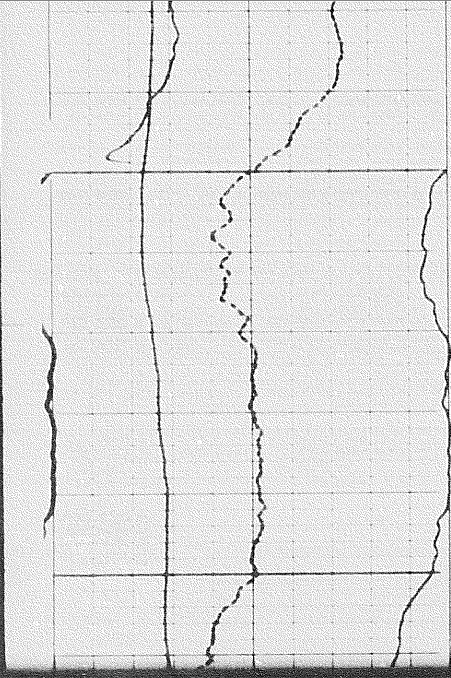




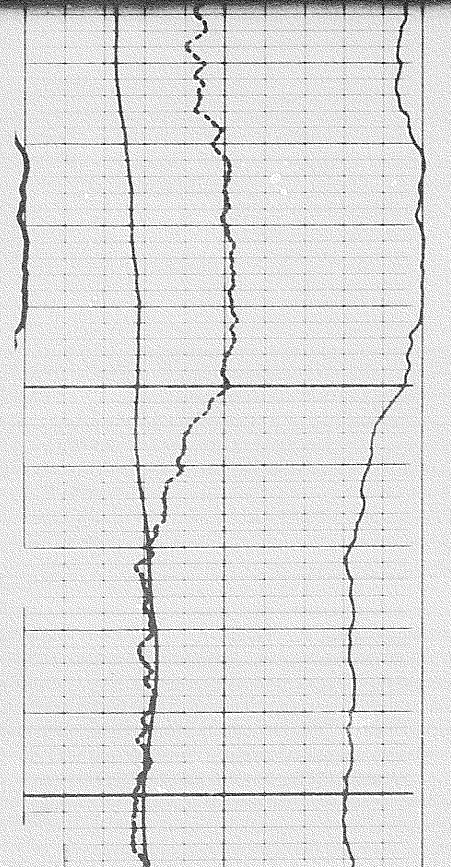
9500

9600

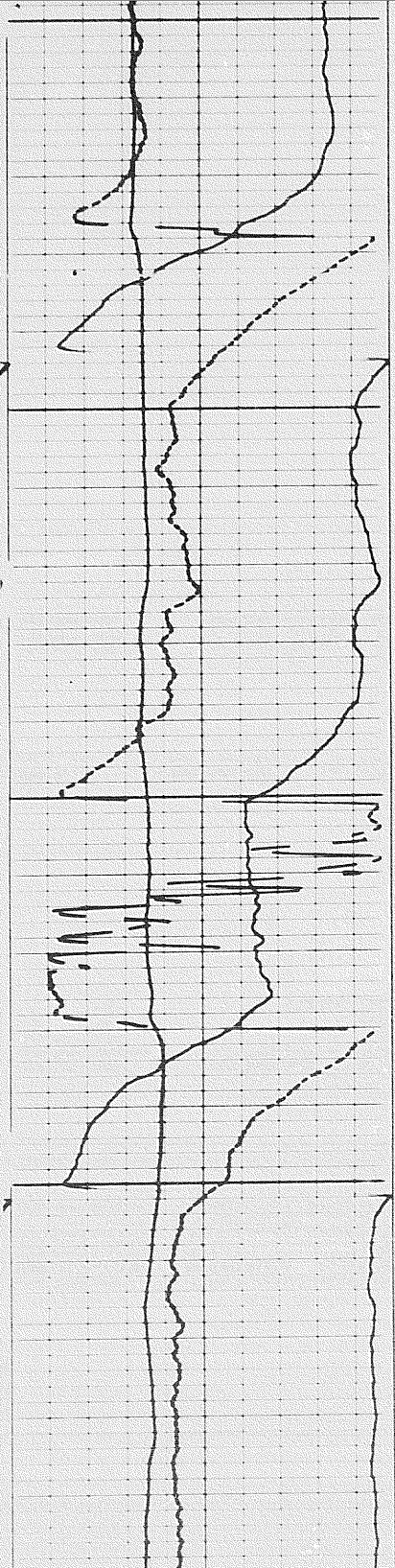




0086



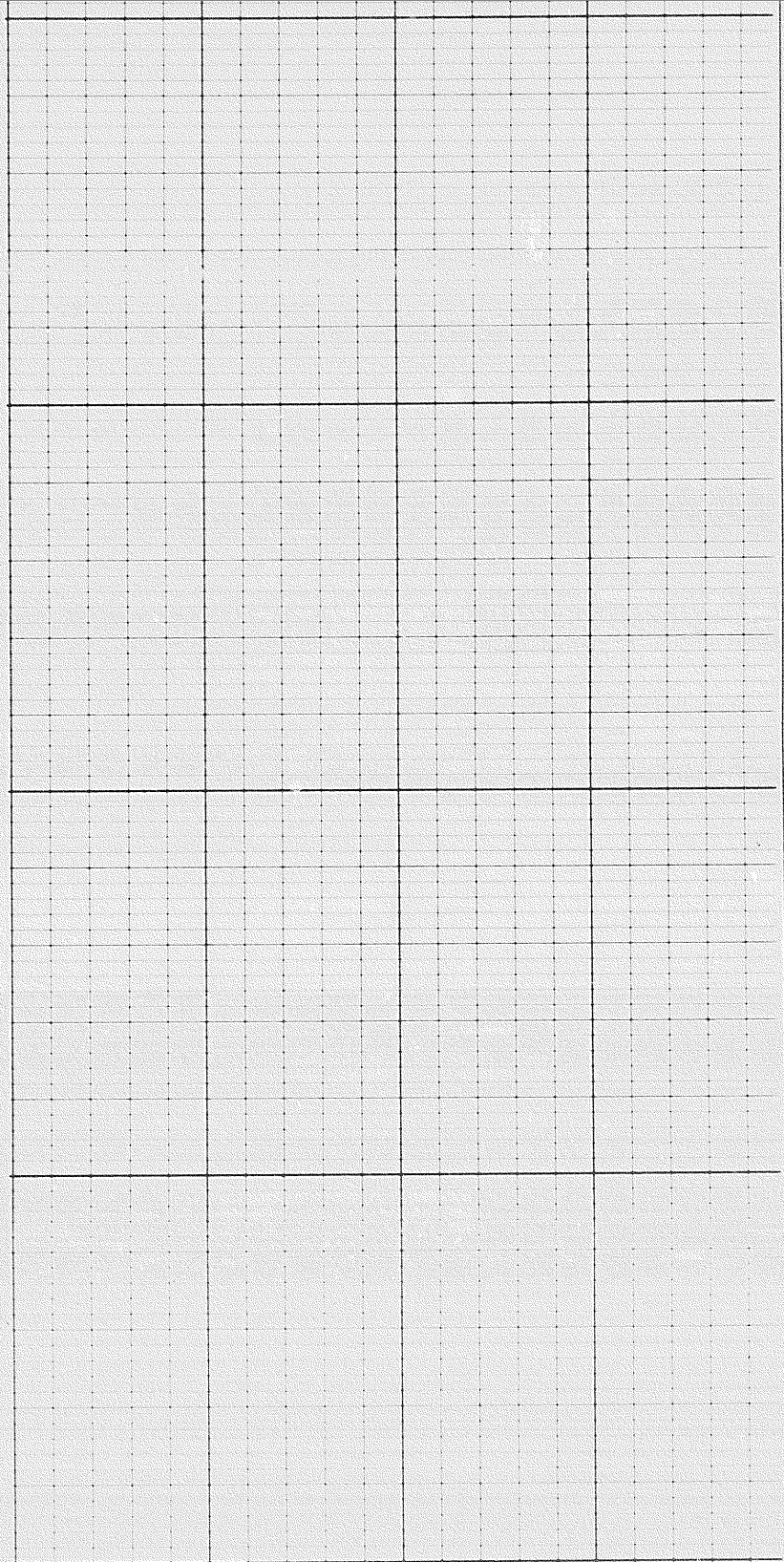
0086

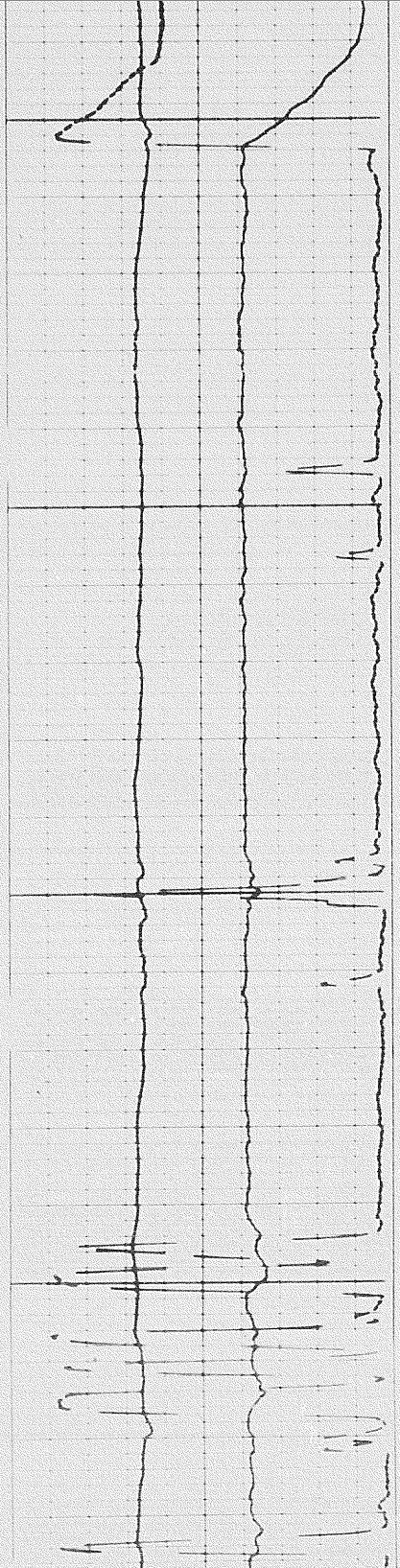


101

10000

0000

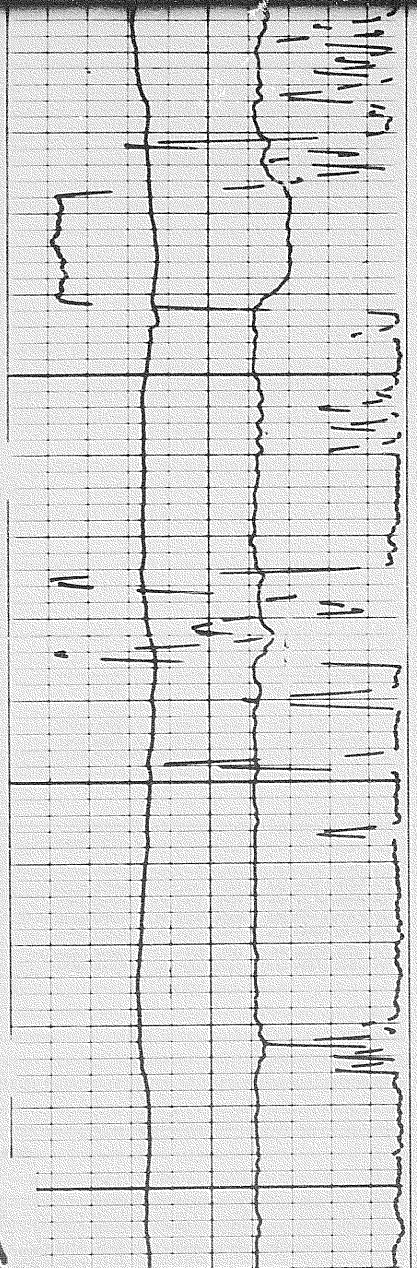




10200

10300

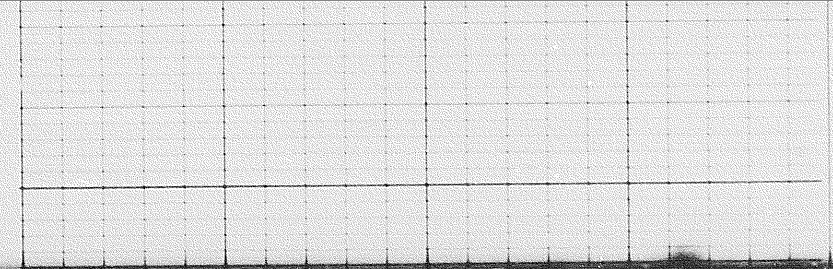
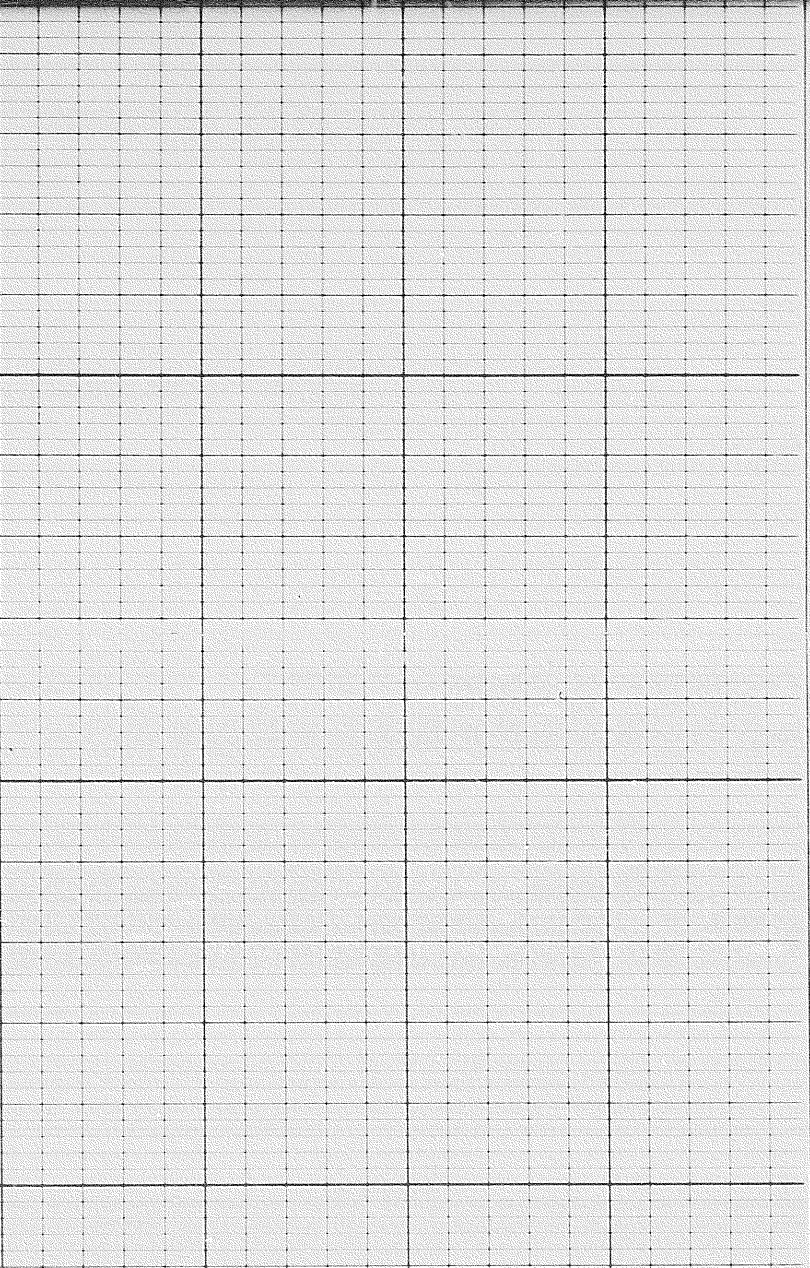
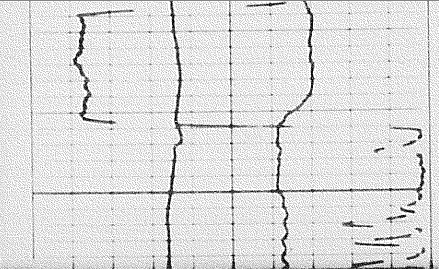
8

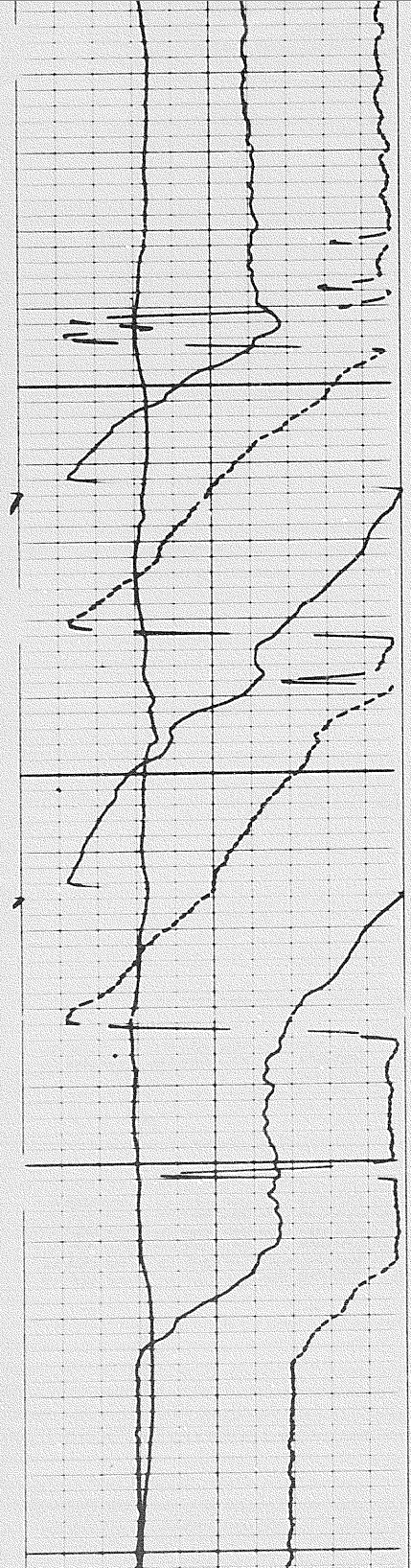


10500

10400

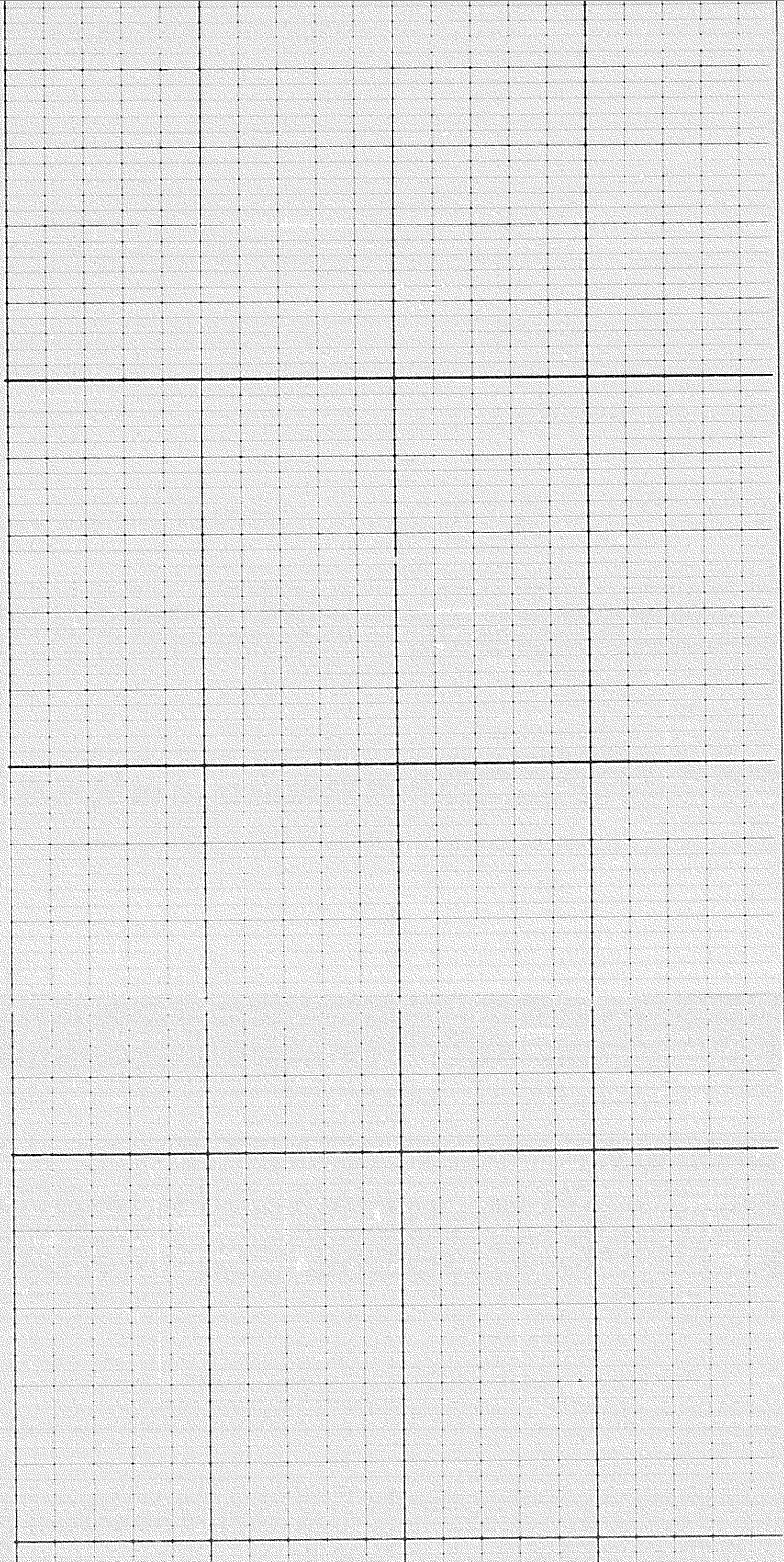
10400

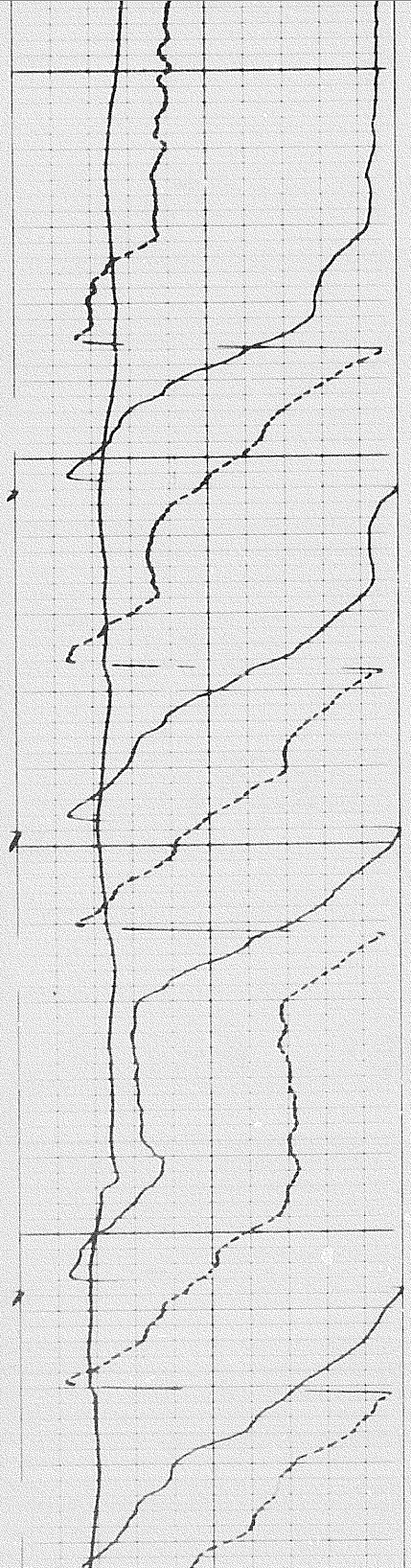




00901

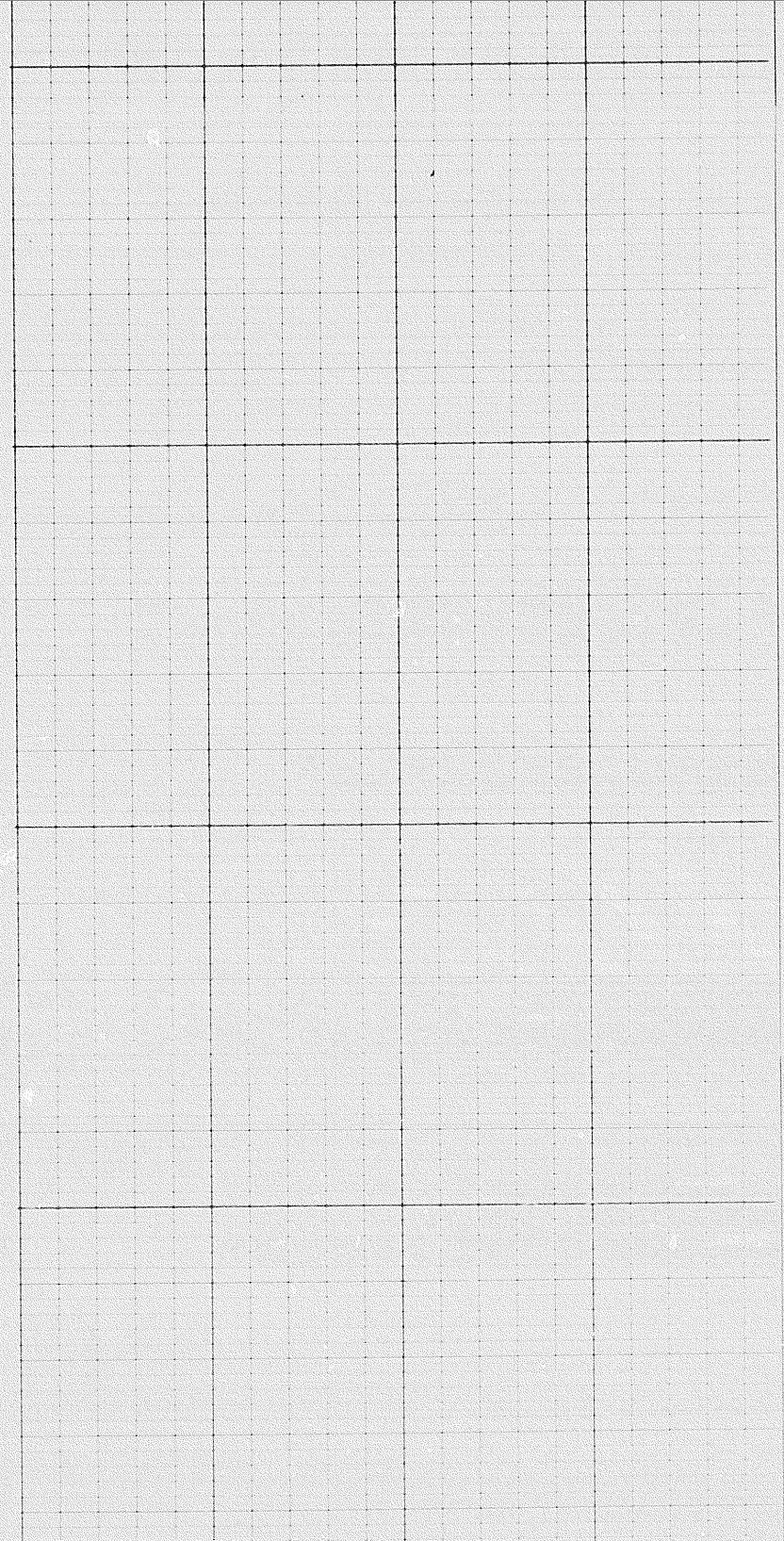
10700



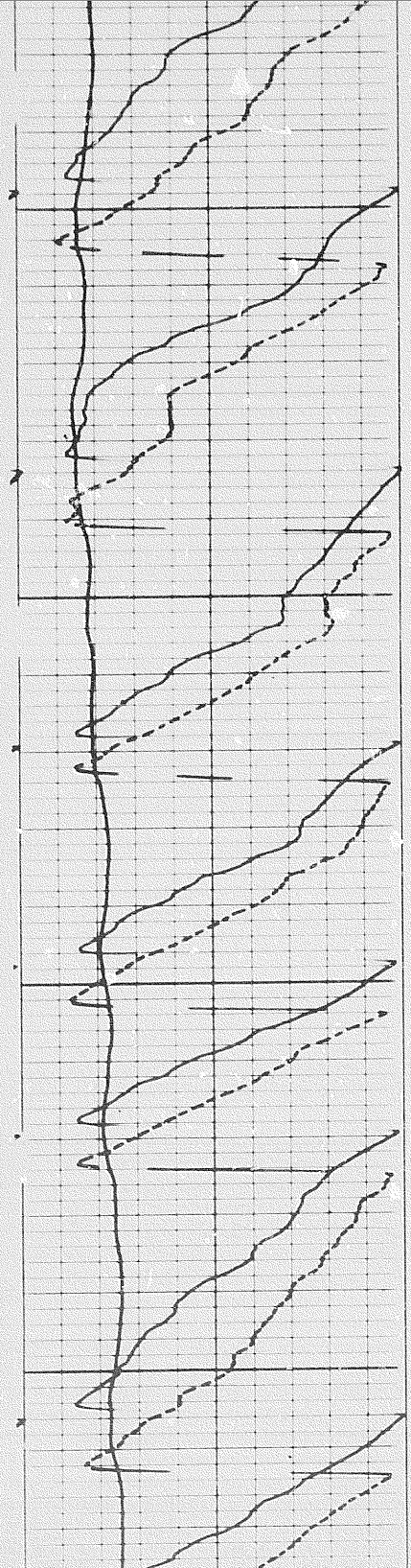


008C |

060 |

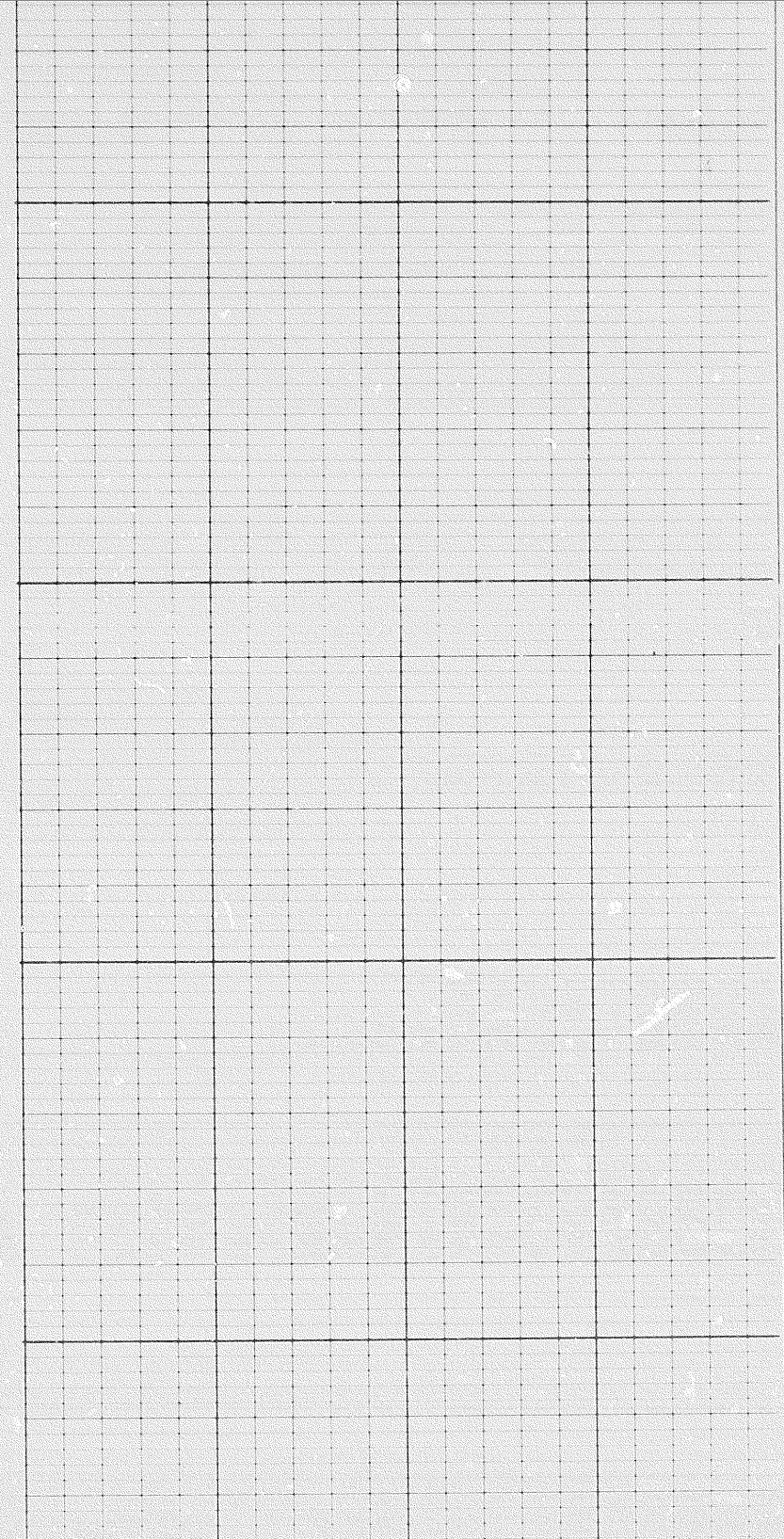


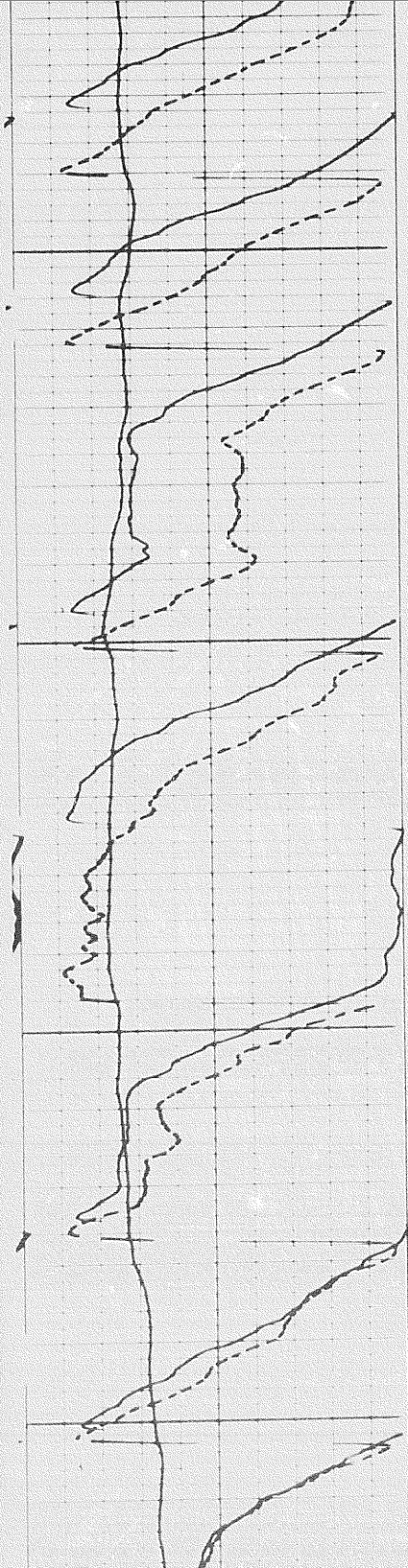
9a b



0603M

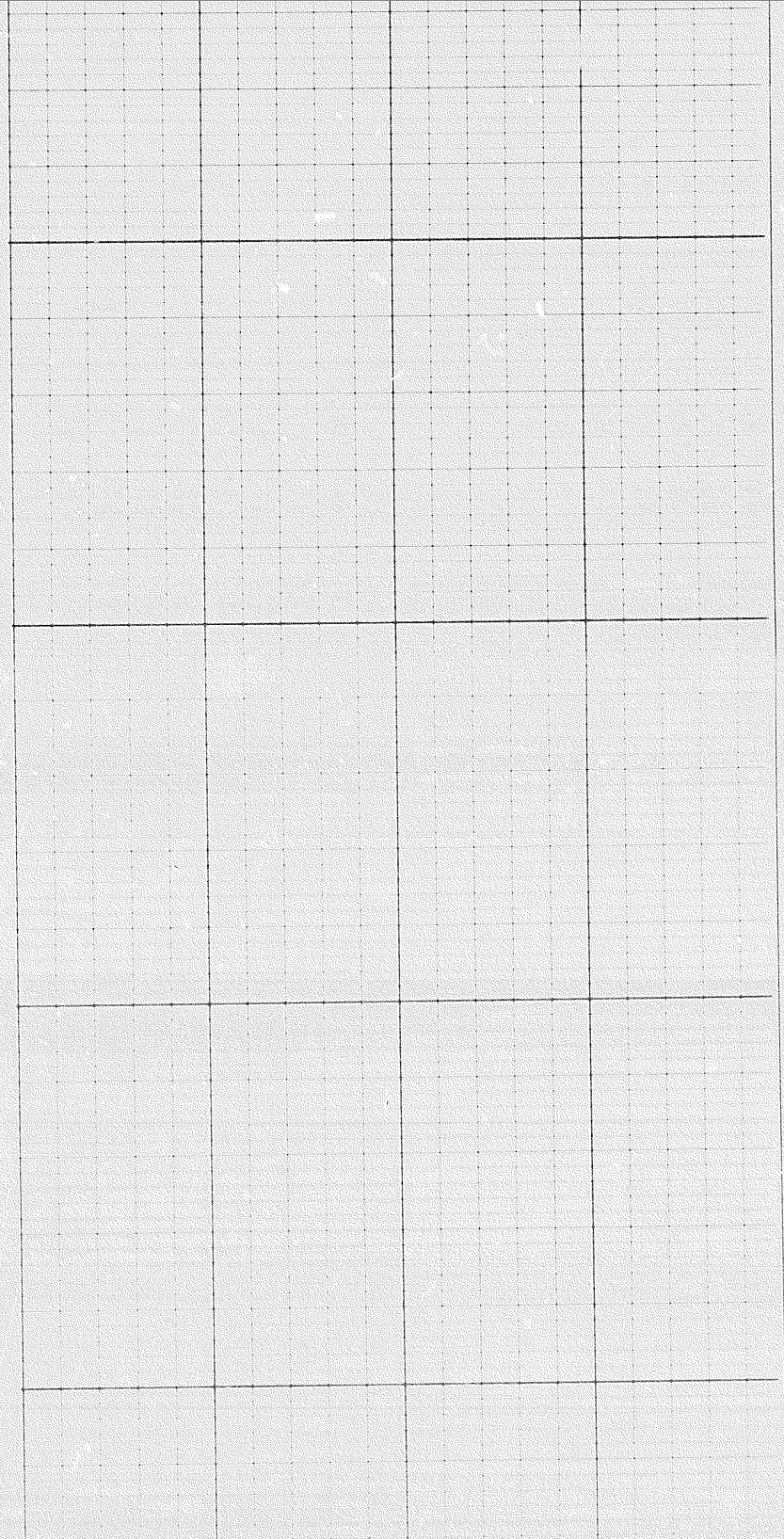
0011 I

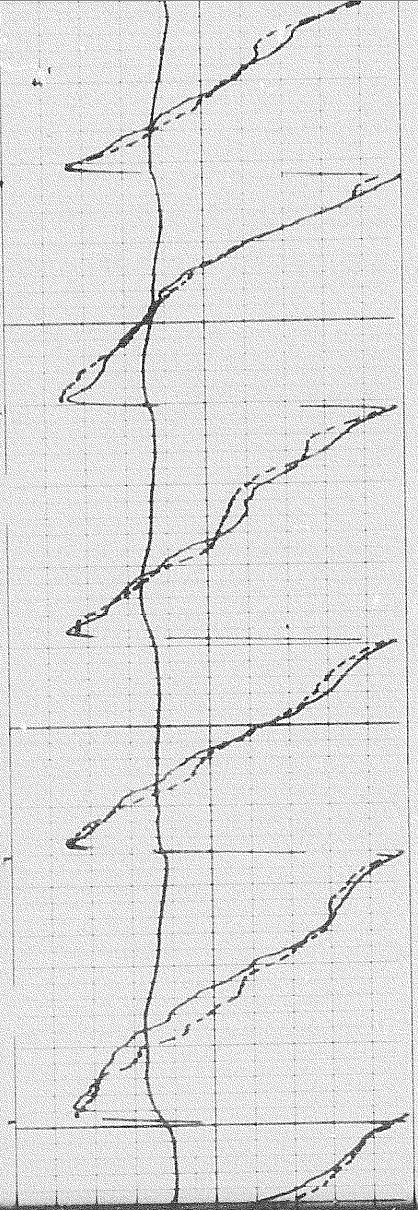




1300

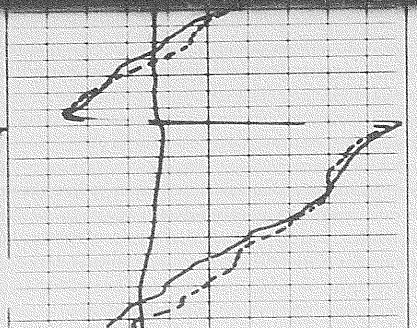
1400



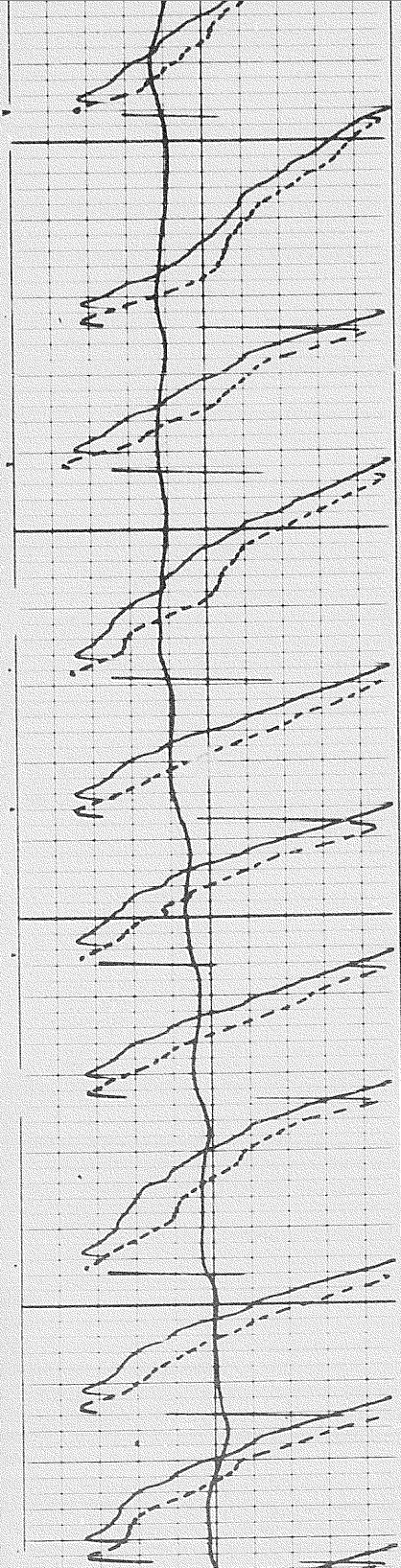


1500

1600

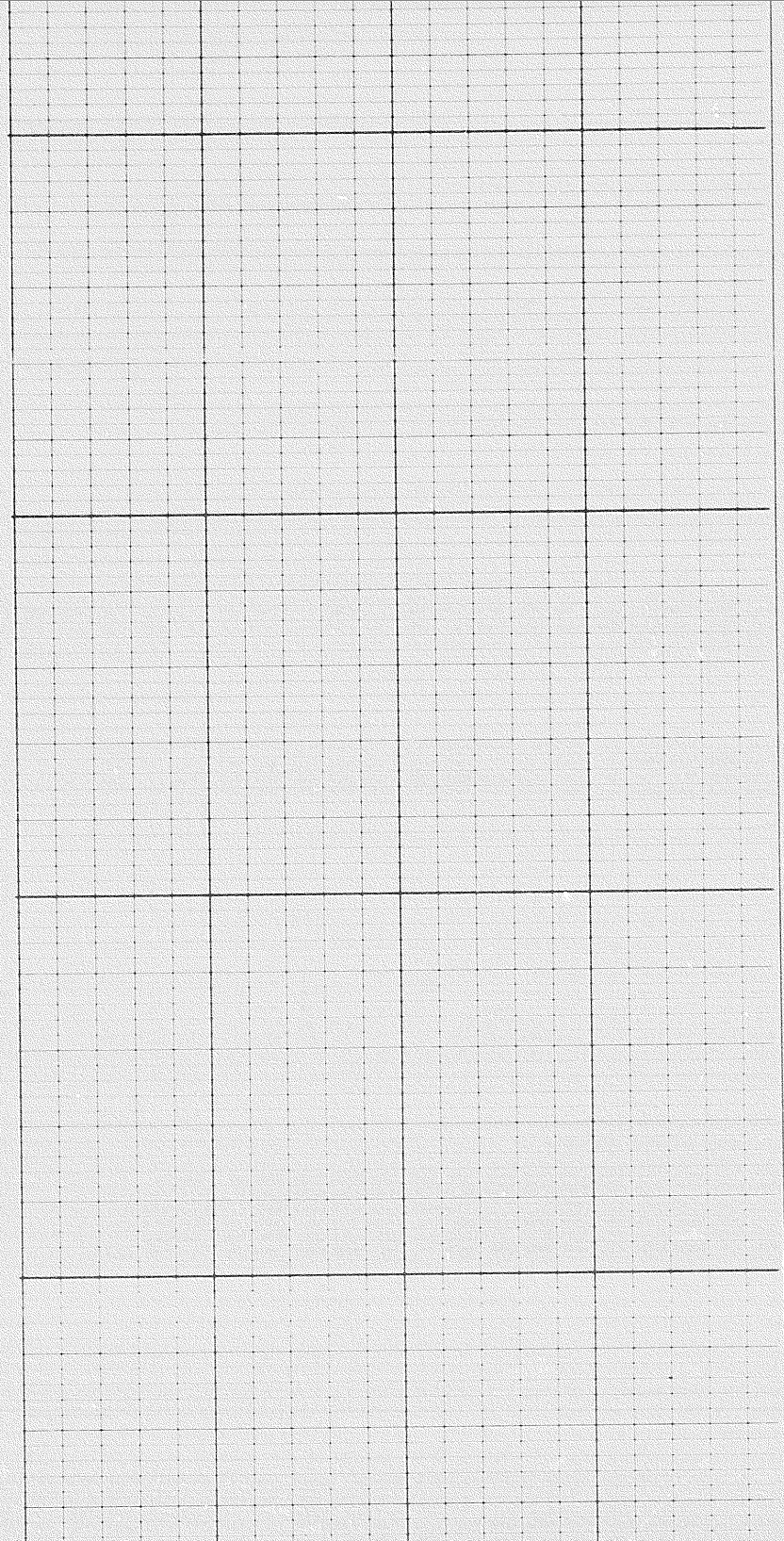


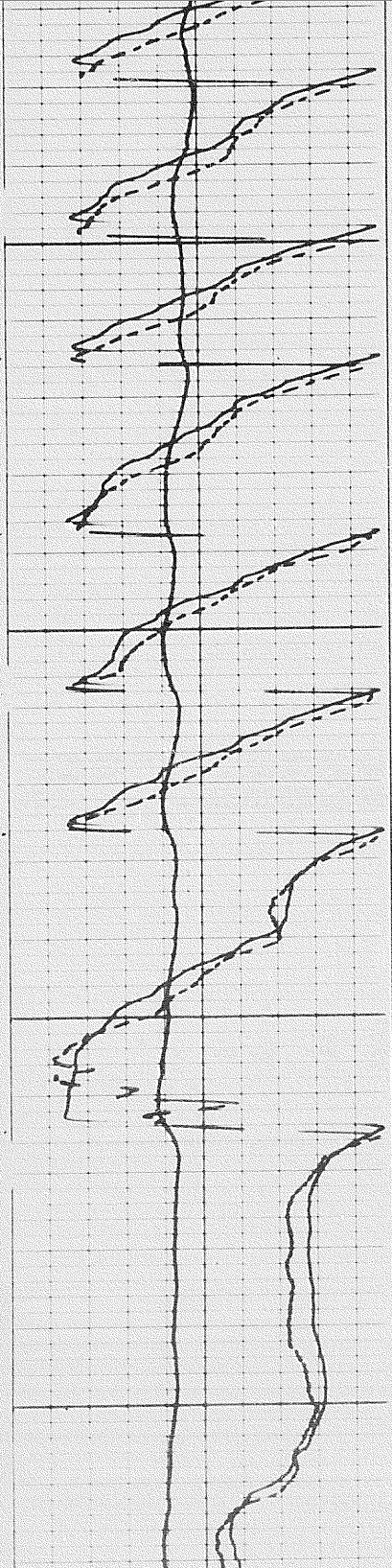
1001



11700

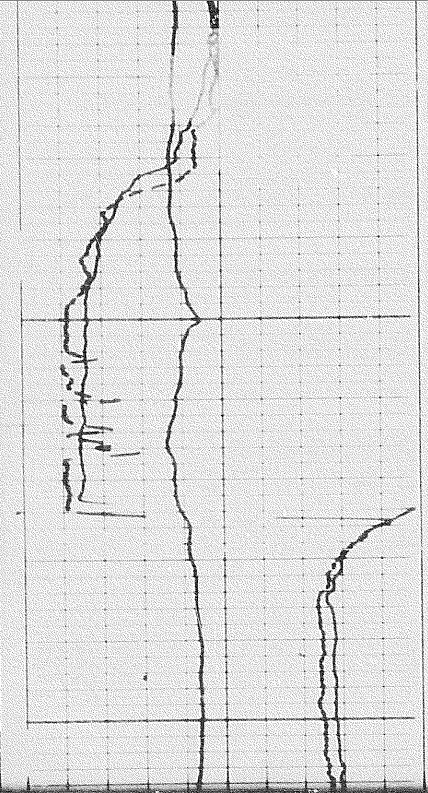
1800



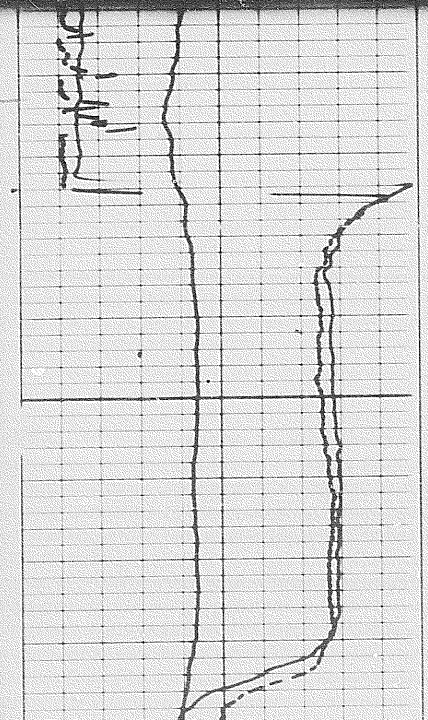


13000

12000

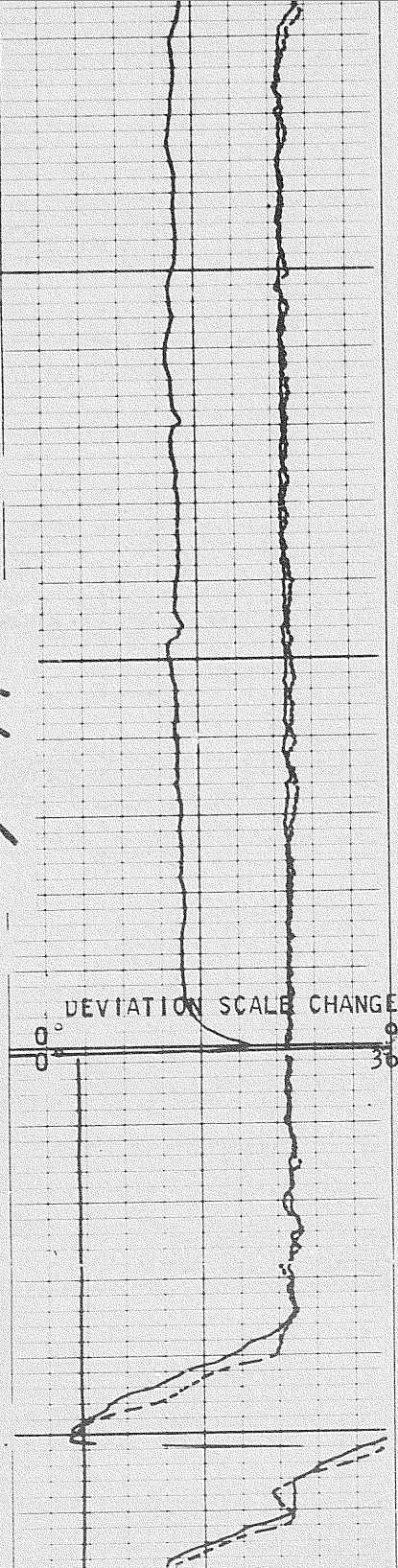


12200



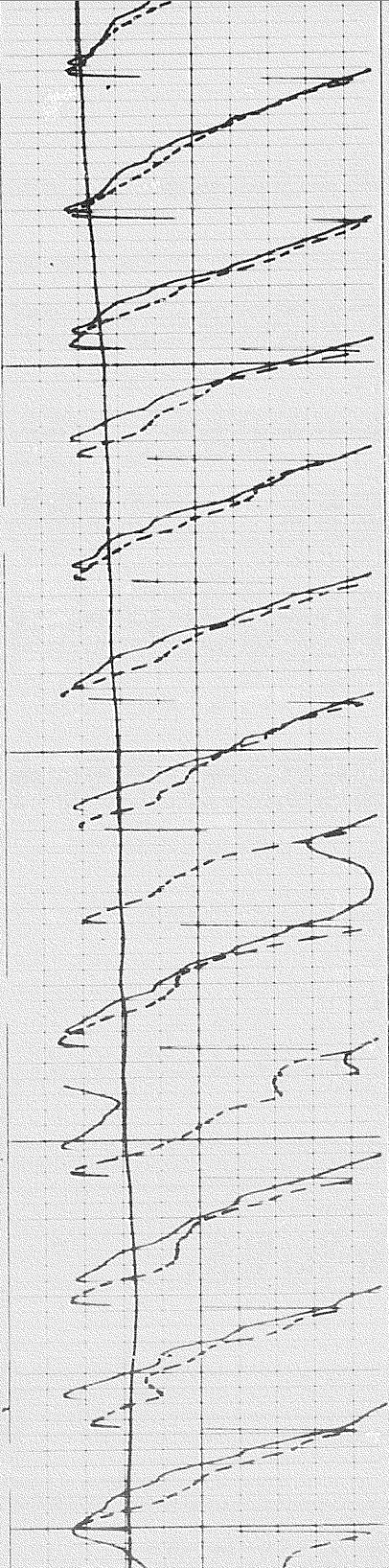
12200

7011



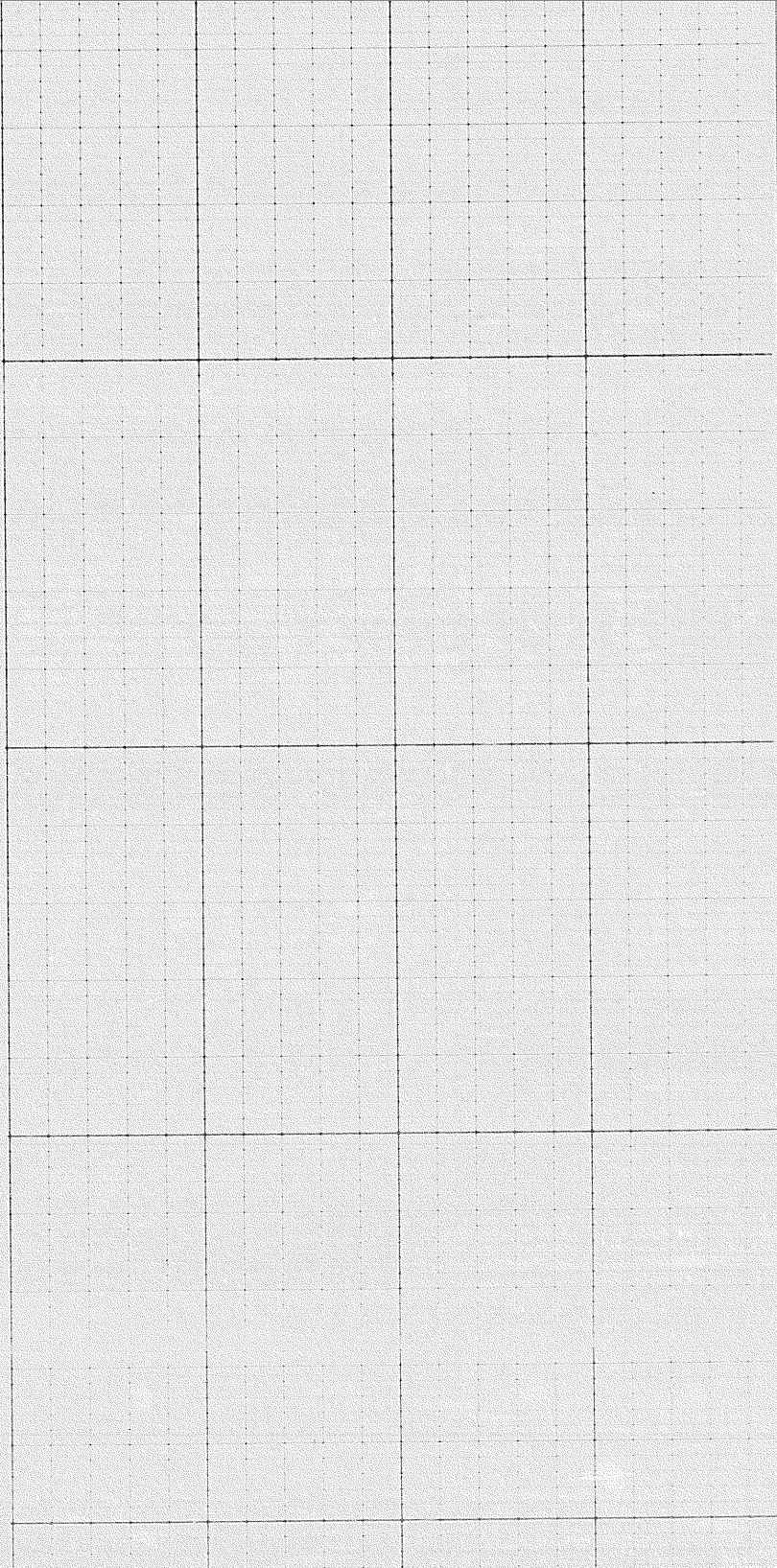
12300

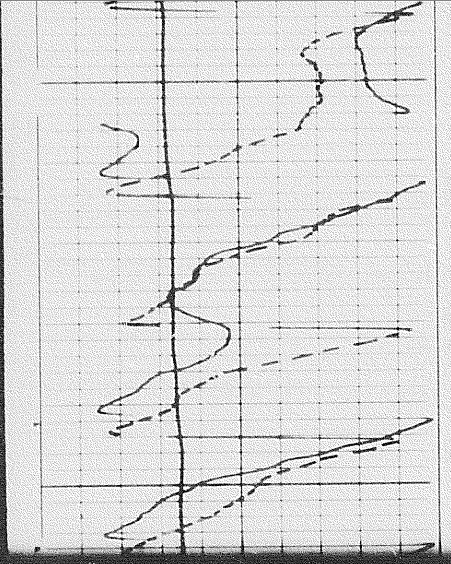
12400



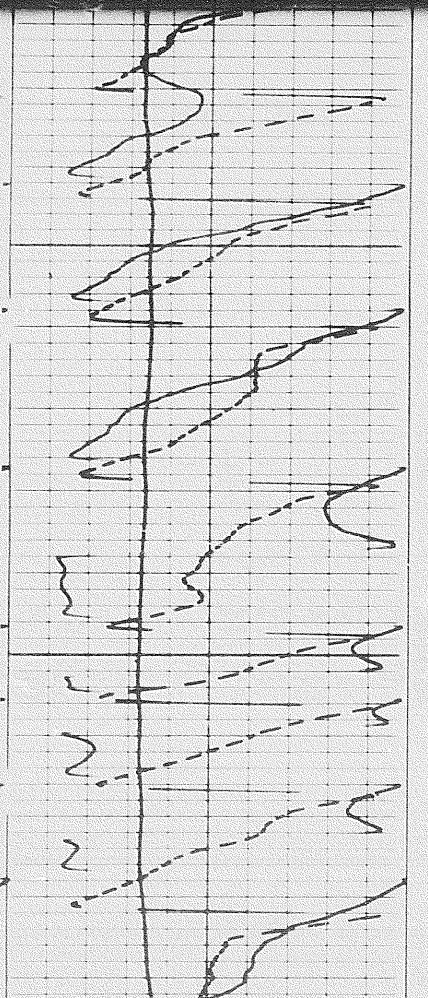
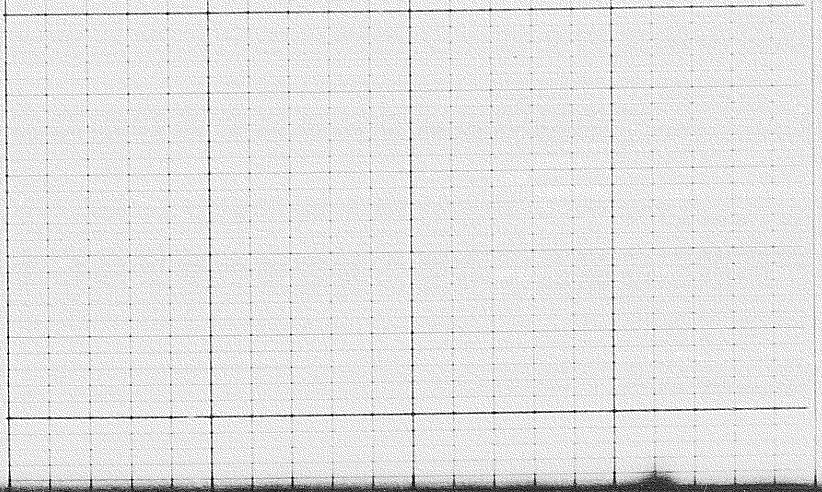
12600

12700

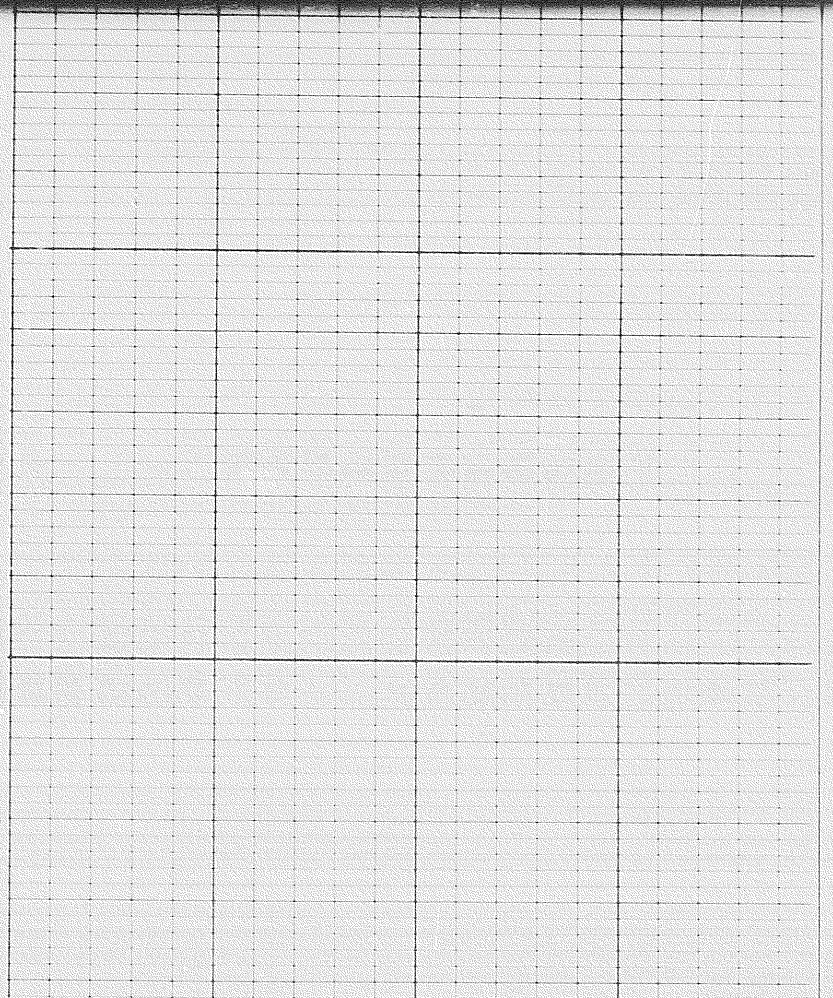




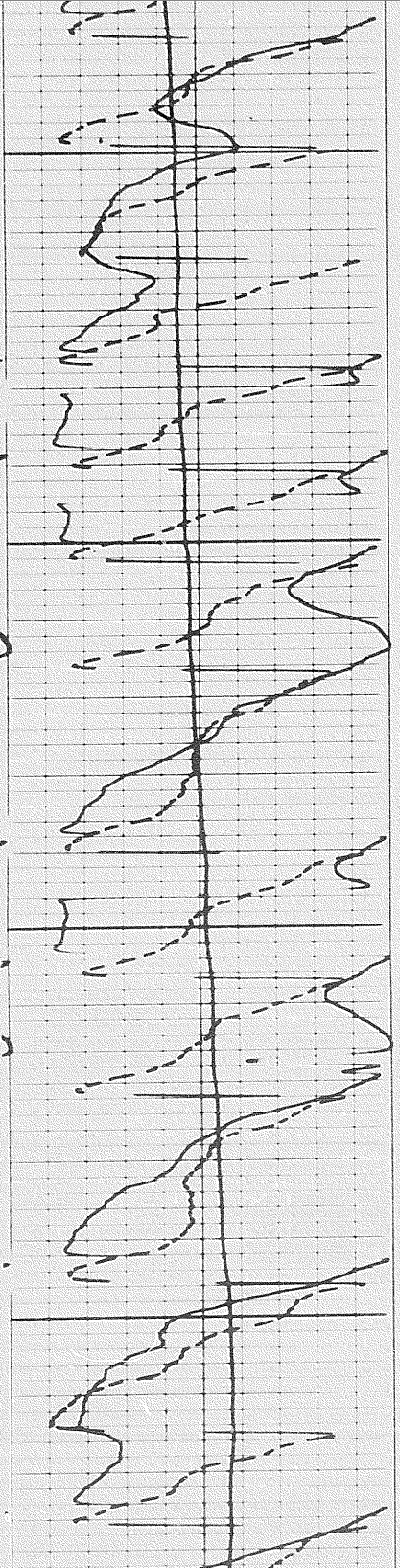
12800



12800

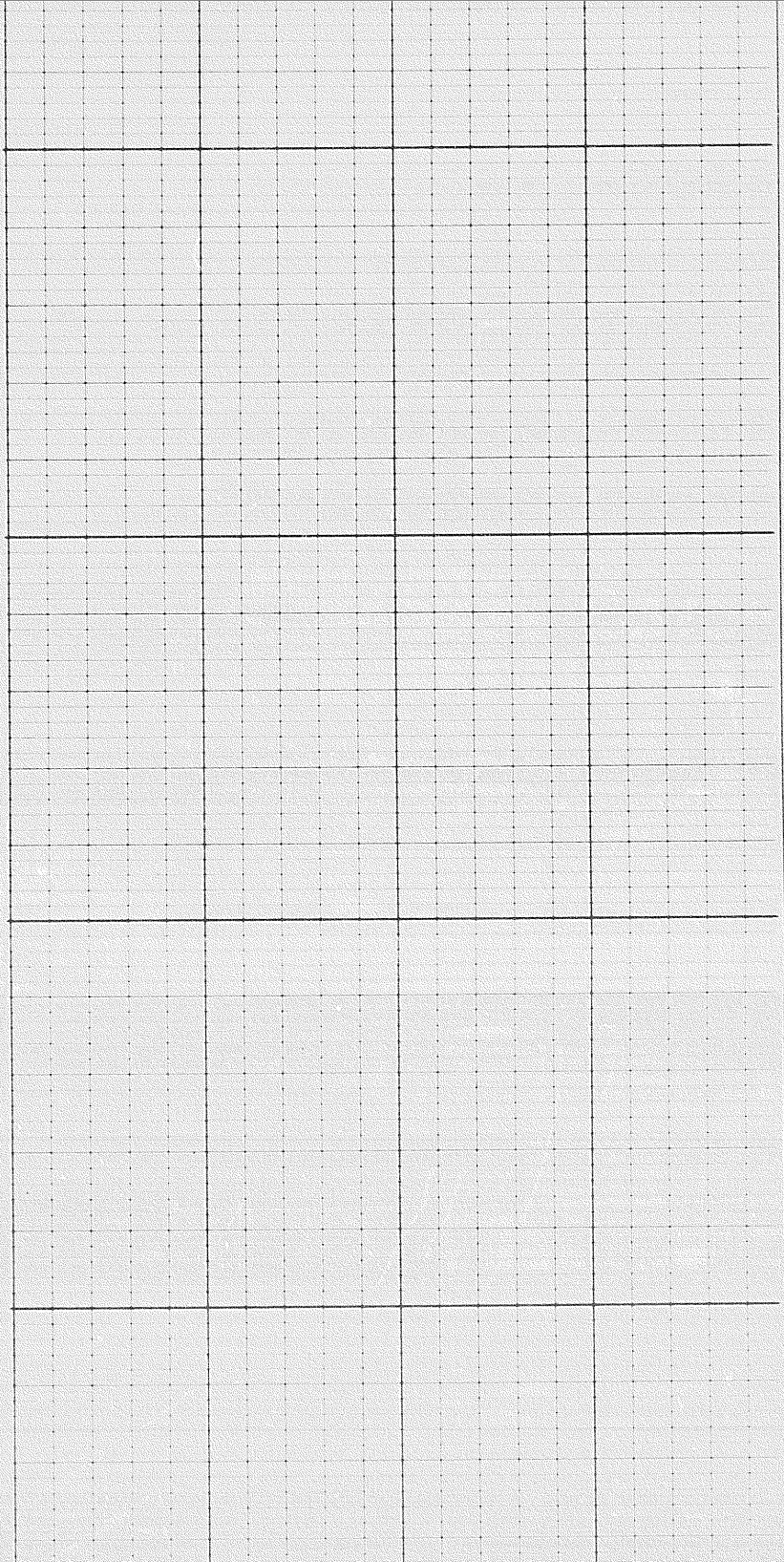


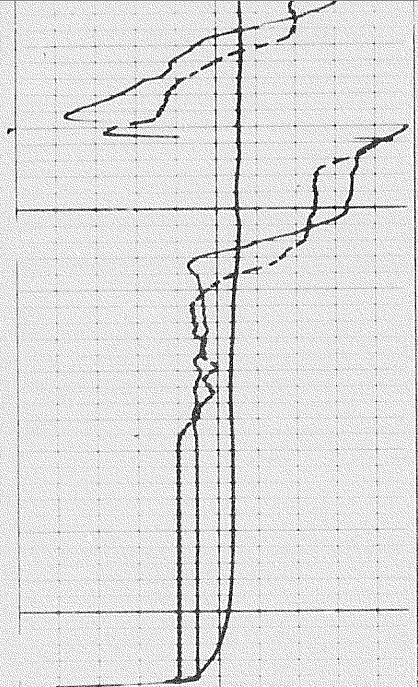
20712



13000

13100

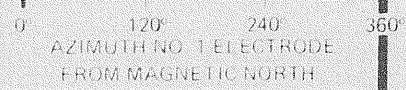




13200

FR

Calibration before Survey



ORIENTATION

DEPTH